



2023 IMPACT REPORT



Who We Are

A Wish Come True (AWCT) is the oldest wish granting organization in Rhode Island and Massachusetts. Since Inception in 1982, we have granted close to 1,800 magical wishes and the growth of the organization has been incredible! In 2020, AWCT expanded its mission to "granting wishes AND providing resources to families before, during and after the wish. These resources include the Meghan Duffy Hardship Fund, which has supported over 155 wish families and \$160,000 to families as they face financial instability due primarily to a loss of employment of one of the caretakers. Support has been for rent, utilities, car repairs, grocery cards and gas cards. In addition, resources are provided to families that cannot afford to send their children to "normal childhood activities" such as camp, sports teams, theatre, cheerleading etc. In 2023, AWCT opened Nap's Nook, a beautiful room at their office that

allows families to bring their children to enjoy games and fun in a safe environment while the parents can take a needed break in the relaxation center.

AWCT's 2024 budget is \$1.5 million. There are five full-time staff positions that include the Executive Director, Director of Philanthropy, Director of Program Operations, Assistant Wish Coordinator and the Finance Manager. Located at 6 Jefferson Drive in Coventry, RI the office is rented at a significantly reduced cost thanks to the generosity of the Finnegan Family.

There are 15 Board of Director seats with active committees for Governance, Finance and Fundraising.



Granting Wishes and Embracing Families

At the core of what we do is the granting of magical wishes to children that are struggling with a life-threatening illness. The average cost of the Wish is **\$5,000** and can vary depending on the type of wish and the size of the family. We have seen a steady increase in wishes granted, with increased wishes in Massachusetts. **Additionally, we recently accepted our first Wish Child in Connecticut.**

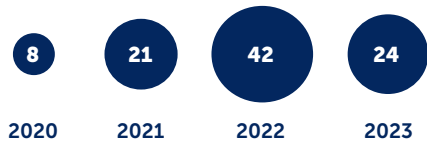
Embracing Families

As we know, the magical wish is a highlight of a journey that started as a nightmare. To hear those words that your child has a life-threatening illness and will be in a battle of their life is truly life-altering. It is traumatic. A Wish Come True wanted to embrace these families before, during and after the magical wish. It is what helps A Wish Come True stand out from other wish granting organizations.

The Meghan Duffy Hardship Fund was started in 2020 by Colleen and Frank Duffy. Their beautiful daughter Meghan lost her battle with cancer at the age of 11. The Hardship Fund was established to assist families when they were in financial crisis. The Duffy's witnessed many families struggling to make ends meet during this difficult time. 1 in 4 families will file bankruptcy due to being behind in medical bills as well as normal bills such as rent, utilities, car repairs etc.

If a family is unable to afford necessities, they certainly cannot afford birthday and Christmas presents. A Wish Come True hosts a toy drive for families, where they can come to the warehouse to "shop" for their children while our elves wrap presents for them. It helps bring back their dignity and self esteem as they are able to make their own children smile.

Hardship Fund Per Year



TOTAL: 112

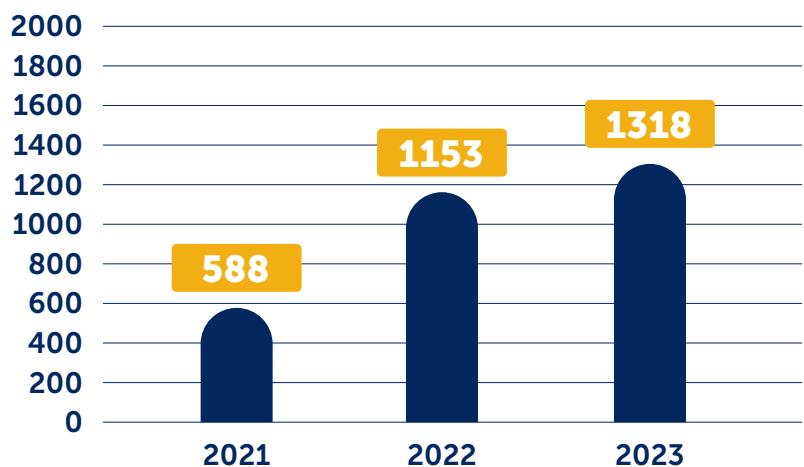
Reason For Hardship

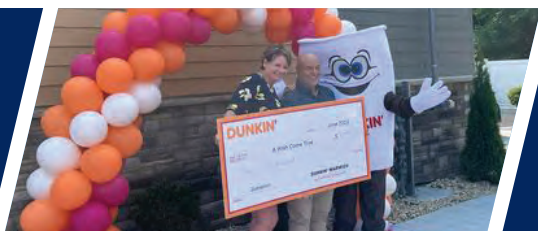


Wishes Granted



Total People Impacted by AWCT

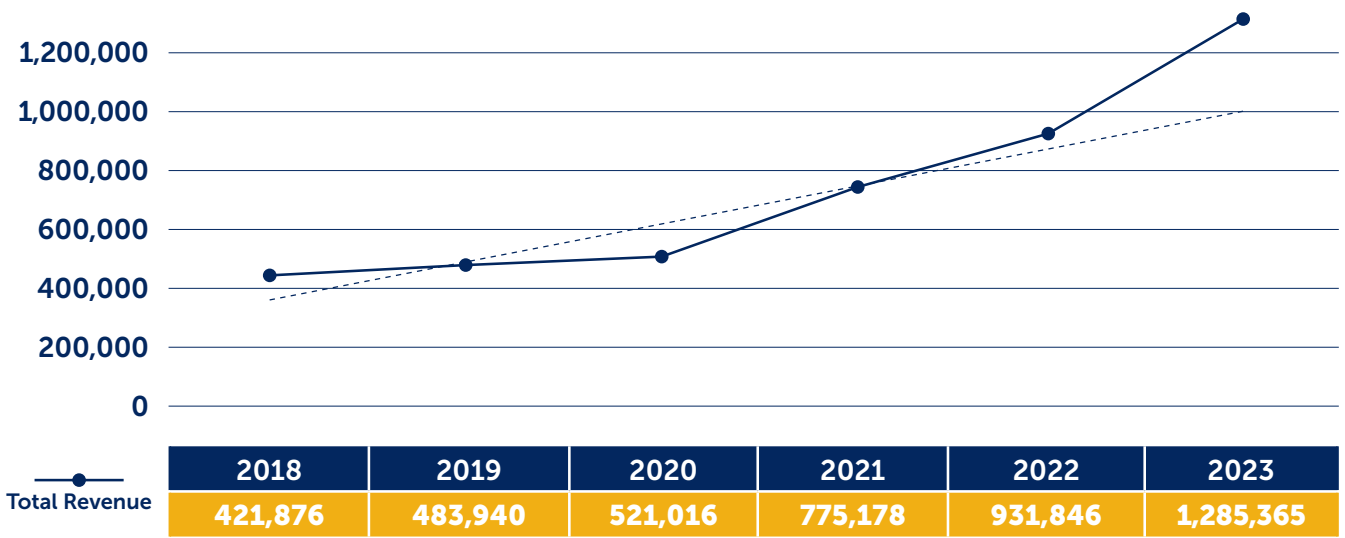




Total Growth in Revenue

Like many nonprofits in Rhode Island, A Wish Come True has struggled over the years with fundraising efforts to support its mission. In 2018, efforts were put in place to raise awareness of the organization and address confusion that it is not part of a national organization. In addition, strategic efforts were put in place to expand the Board of Directors, allowing us to leverage relationships. Even through the pandemic, A Wish Come True continued to increase donations and revenue, primarily through successful special events, individual and corporate sponsors as well as a business-minded Board of Directors connected to the community.

413%
Increase in Donors
since 2020





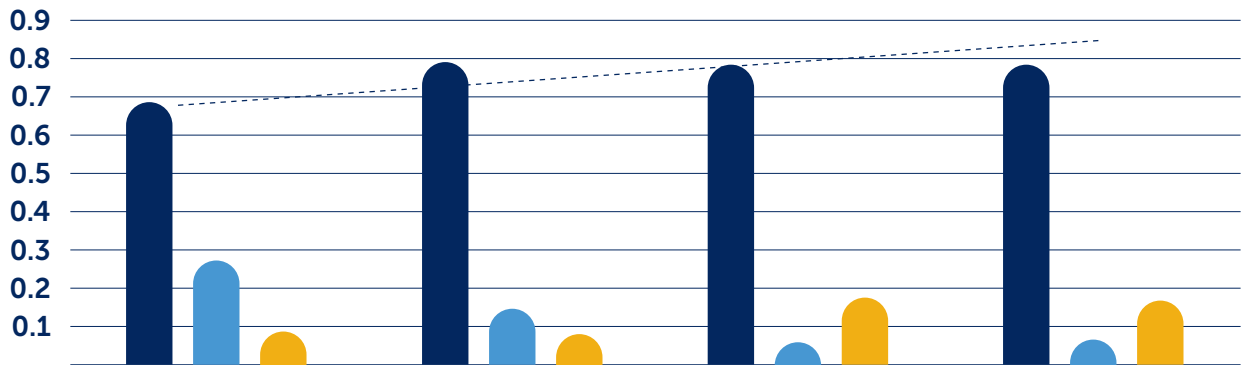
Program Allocations



*"A Wish Come True is our family now. They truly understand our journey and our magical wish to Disney was **beyond our dreams.**"*

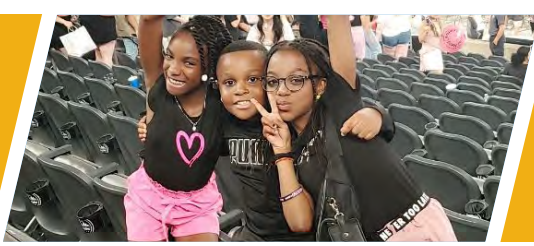
- Lauren, Wish Mom

.78 cents on every dollar directly impacts our program.



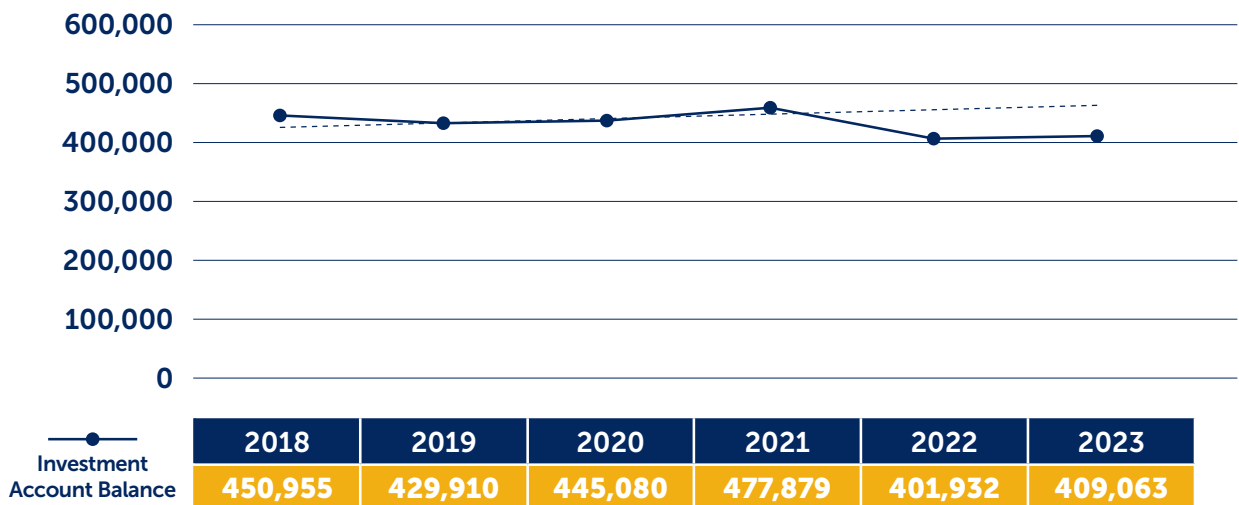
● Program Allocation ● Management ● Fundraising ----- Linear (Program Allocation)





Investment Account

In 2023, A Wish Come True sold their property at 1010 Warwick Ave and the Finance Committee advised the organization to directly fund the long-term investment of the organization. This allowed the organization to focus on the day-to-day as well as the long-term investment in the community.





Our Board



Paula Pais Leach, Board Chair

Senior Vice President Customers Bank



Sean Finnegan, Treasurer

Controller, Finetco Inc.



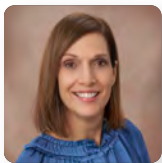
Ron Volpe, Past Wish Child & Secretary

Senior Mortgage Loan Officer, CMG Financial



Colleen Duffy, Fundraising Committee Chair & Finance Committee

President of the Meghan K. Duffy Memorial Foundation



Tracy Walsh, Governance Committee Chair

Director, AIPSO Ins. Operations, Personal Auto



Jeff Beckwith, Past Wish Child & Finance Committee

CPA for Kahn, Litwin, Renza & Co., Ltd.



John Carvalho, Finance Committee

President/CEO Apollo Safety



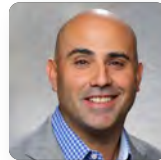
Sean Carey, Fundraising Committee

Entrepreneur & Real Estate Professional



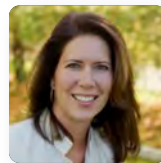
Bill Finnegan, Finance Committee & Governance Committee

President/CEO Finecto Inc.



Steven Napolillo, Fundraising Committee

Senior Athletic Director, Providence College Friars



Amy Parker, Governance Committee & Fundraising Committee

General Counsel & Director of HR, AGI Construction

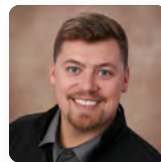


Michael Poirier, Fundraising Committee & Governance Committee

VP Customer Success, Global Interconnect



Board Associates



Evan Finnegan

Purchasing Manager at Finetco



Ryan Finnegan

Outside Salesman at Finetco



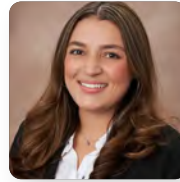
Our Staff



Mary-Kate O'Leary, MA

Executive Director

✉ marykate@awishcometrue.org



Hailey Nascimento

Assistant Wish Coordinator/Family Support Worker

✉ hailey@awishcometrue.org



Kelly Bolton

Director of Program Operations

✉ kelly@awishcometrue.org



Lisa Connell

Finance & Administration Manager

✉ lisa@awishcometrue.org



Pamela Bhatia

Director of Philanthropy and Communications

✉ pamela@awishcometrue.org

CONTACT



WEBSITE

awish.org



PHONE

401-781-9199



EMAIL

awish@awishcometrue.org



ADDRESS

6 Jefferson Drive,
Coventry, RI 02816