

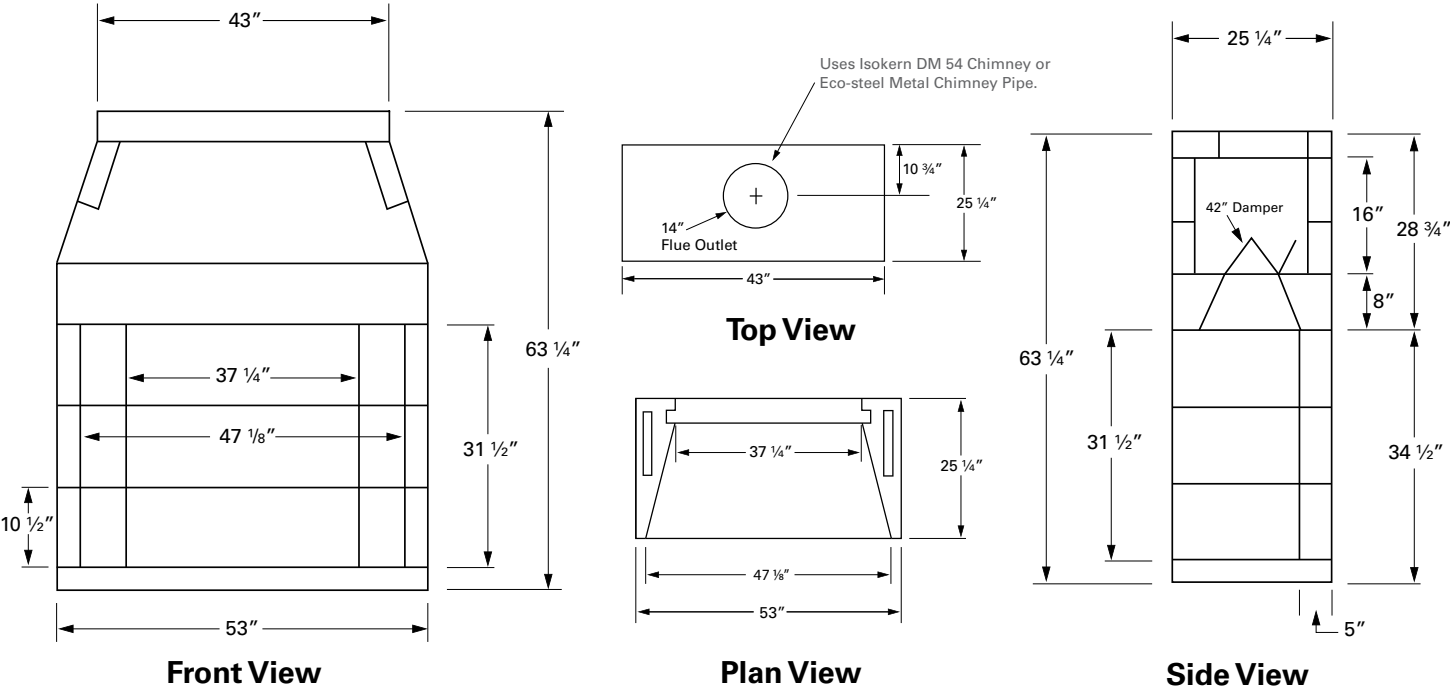
# Isokern Standard 46" Fireplace



Project Name: \_\_\_\_\_ Location: \_\_\_\_\_

Address: \_\_\_\_\_ Gate Code: \_\_\_\_\_

Project Manager: \_\_\_\_\_ Contact #: \_\_\_\_\_

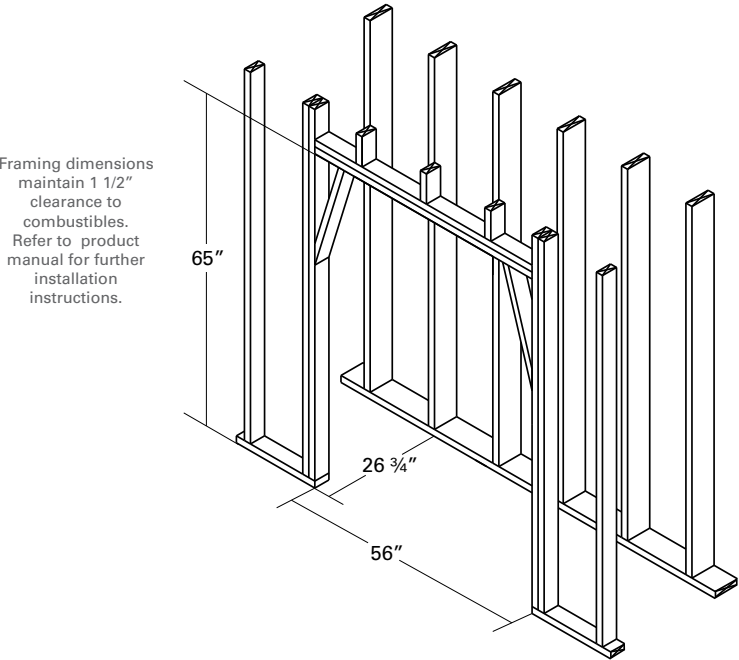


## FIREPLACE OPTIONS

Hearth Height: \_\_\_\_\_  
 Brick Type: \_\_\_\_\_  
 Brick Color: \_\_\_\_\_  
 Brick Pattern: \_\_\_\_\_  
 Damper: \_\_\_\_\_  
 Chimney Type: \_\_\_\_\_  
 Offset: \_\_\_\_\_  
 Other Options: \_\_\_\_\_  
 Spark Arrestor/Termination: \_\_\_\_\_  
 Enervex RSHT Chimney Fan: \_\_\_\_\_  
 Decorative Termination: \_\_\_\_\_  
 Gas Log Set: \_\_\_\_\_  
 Wood Grate: \_\_\_\_\_

Notes: \_\_\_\_\_  
 \_\_\_\_\_  
 \_\_\_\_\_  
 \_\_\_\_\_  
 \_\_\_\_\_

## MINIMUM FRAMING DIMENSIONS



The total weight for the Standard 46" fireplace is approximately 1450 lbs. This dry weight includes fireplace pumice components only, additional weight from mortar, damper, firebrick and chimney not included.