

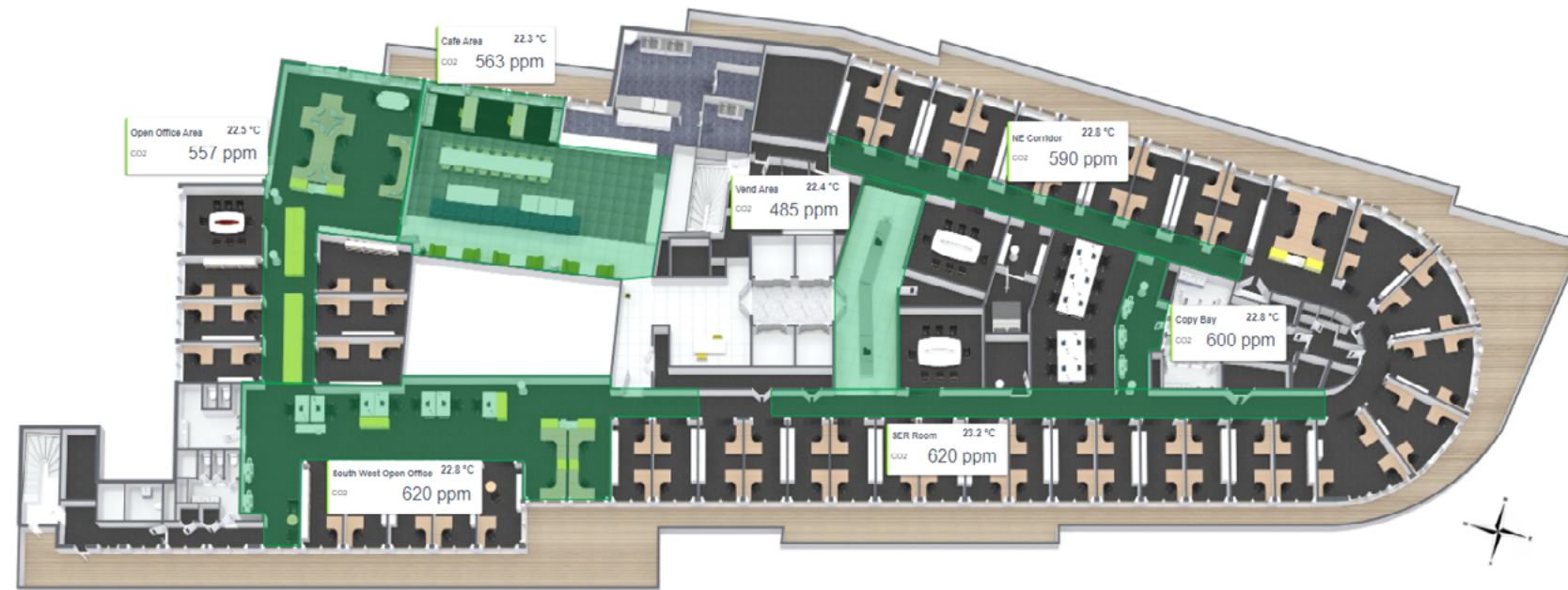
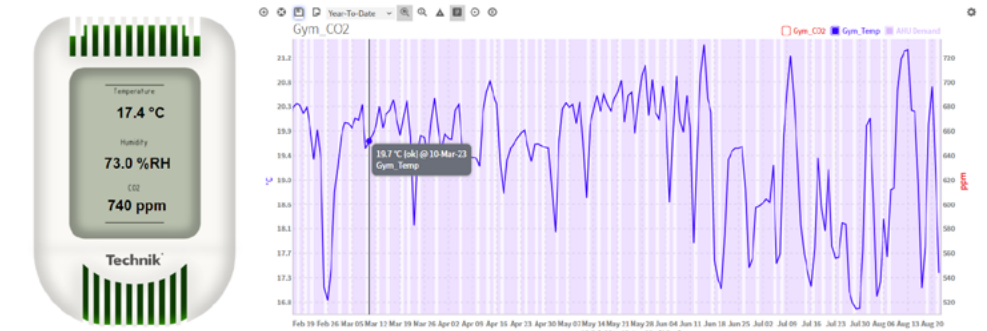
HVAC AND WATER TEMPERATURE MANAGEMENT

INTEGRATED DEMAND DRIVEN STRATEGY & CBM (CONDITION BASED MONITORING)

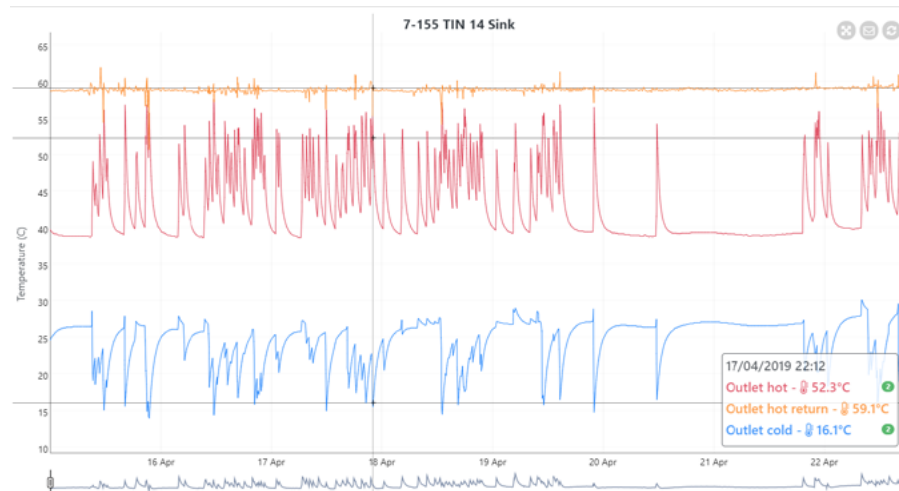
Our application has been designed to complement a building's demand driven strategy, whether this be existing or for future integration.

Our solution also provides the user with a solution in collaboration with industry leading specialists, to remotely monitor domestic water systems, which not only enhances a site's water risk management plan but also alleviates unnecessary physical labour hours.

Air quality sensor and graphical output



The hub can merge with both off and on premises solutions which allows customers the flexibility in terms of choosing localised wireless Indoor Air Quality solutions to capture real time on floor data of occupancy, which can then be co-opted with the BMS to provide demand to the HVAC systems, maximising energy efficiency of the main plant.



Reading Alarms for all Sites

Reading Alarms for all Sites

Show: 10 entries

Status: Active

Alarm: Outlet has not reached 50°C in the last 7 days

Refresh Acknowledge

Alarm	Type	Severity	Triggered	Completed	Related To	Location
Outlet has not reached 50°C in the last 7 days	Reading Target	Critical	09/11/2022 00:00		FD - Kitchenette: Outlet hot	*Clintek: Avondale
Outlet has not reached 50°C in the last 7 days	Reading Target	Critical	09/11/2022 00:00		FD - Kitchenette: Outlet hot	*Clintek: Avondale
Outlet has not reached 50°C in the last 7 days	Reading Target	Critical	09/11/2022 00:00		FD - Hall 10 - Male WC - Middle WHB: Outlet hot	*Clintek: Avondale

Showing 1 to 3 of 3 entries (filtered from 11,203 total entries) 1 row selected

Data retrieved on Today at 08:41