



*"The Lord bless you and keep you
make His face shine upon you
and be gracious to you
The Lord turn His face toward you
and give you peace
May His favor be upon you
and a thousand generations
Your family and your children
and their children, and their children"*

*Song lyrics taken from
"The Blessing"
Elevation Worship*

LETTER FROM OUR FOUNDERS

The work of B2THEWORLD is to bless children, families, and communities in countries recovering from war through transformative educational institutions. We believe that transformative education, an education that helps change a child's life trajectory, helps change the course of their family's life. Our prayer is that this will be a blessing not only in the students' lives today, but in their families for generations to come. Our over 1300 students in Rwanda, Pakistan, and our 20+ participants of our Global Educators Gathering have been experiencing this transformative education daily. It's been amazing, and we are thankful.

Ben freshly saw this during a trip to Pakistan in September 2019, when global travel was a norm. As he traveled, he visited our three partner schools, met with their families, and then went to college with the students that are sponsored. It was clear that education was their pathway to a new life. Their families are in bonded labor and work as brickmakers and street cleaners. The opportunity to provide education will help break the cycle of poverty and bondage that they are in today. Even amid Covid19, we remain thankful for how God has been at work.

We've made many adjustments, as much of the rest of the world has, and it's been a joy to see God continue to be at work. Our leadership team has stewarded the vision and mission of B2THEWORLD during this season, including leading the launch of online school in Kigali - KICS Learning Continues and meeting the most vulnerable needs in Pakistan through The Blessing Fund.

We are thankful. From the bottom of our hearts, thank you for your partnership with us in this incredible work. We trust this report will give you a clear picture of some of the 2019-2020 year's highlights. This year has been quite the journey, and we are incredibly thankful. Thank you for your prayers, your advocacy, and your financial partnership. On behalf of each student that we are involved with and their families, thank you. Your commitment to supporting the vision and mission of B2THEWORLD is changing the lives of children and families. Thank you.

Blessings,

Ben & Susie Thomas, B2THEWORLD Co-Founders





WHO WE ARE

VISION

The **Vision** of B2THEWORLD is to bless children, families, and communities in countries recovering from war, conflict, or devastation through transformative educational institutions.

MISSION

The **Mission** of B2THEWORLD is to establish schools that change the trajectory of a child's, family's and community's present and future.

VALUES

The four **Core Values** for B2THEWORLD that will be at the heart of every B2THEWORLD institution:

- Faithful presence
- Flourishing
- Global Leadership
- Transformative





OUR TEAM

OUR BOARD



WILLIAM HUNTER THOMPSON
BOARD CHAIR & TREASURER



DR. BENJAMIN P. THOMAS
CEO & VICE CHAIR



DR. MARC SIMPAO
SECRETARY



REV. THOMAS HOLLIDAY
DIRECTOR



MICHAEL O'NEILL
DIRECTOR



DR. KAYAN LEWIS
DIRECTOR



K. NIGEL ADAMS
DIRECTOR



ALVIN NSENGIMANA
EX OFFICIO MEMBER OF THE BOARD



SEAN KERRIGAN
EX OFFICIO MEMBER OF THE BOARD

OUR STAFF



Erica Munyaneza
Director of Operations

"This year I transitioned from B2THEWORLD volunteer to employee! I'm so thankful for this provision, which has enabled me to serve B2THEWORLD more fully. I have enjoyed caring for and leading our Rwanda team and engaging in a more significant support role to our Pakistan partner."



Gloria Powell
Communications Coordinator

"What a year! In November, I moved to Kigali from the States to be closer to the B2THEWORLD team. Adjusting to life here has been great thanks to the amazing support from the B2 team. I have loved the opportunity to work closely with our team and to see our momentum growing online through projects like the B2 Blessing Fund and the Ungala."



Ivan & Jordan Mbaraga
KICS Director of Operations & 4th Grade Teacher

"This year, I invited friends from around the world (US, Germany, England) to be paired with a student in my class. That person then consistently prayed for their student and got specific, periodic prayer requests. It truly showed me the value, importance, and power of a global family and the overall body of Christ!" - Jordan Mbaraga



Micah & Grace Hale
Programs Manager & KICS Secondary Principal

In 2019, Micah Hale served as the Programs Manager for B2THEWORLD. Grace Hale served as the Secondary Principal. Micah organized the 2nd annual Global Educators Gather (GEG) attended by educators worldwide. Grace also led sessions for the GEG alongside Dr. Janet Nason.



Douglas & Kerry Bryan
KICS 3rd Grade Teacher (Doug)

"I was challenged this year to empathize more with students transitioning into KICS and Rwanda. Change can be difficult. I also often reminded my students that God loves them and has a plan for their lives." - Douglas Bryan



Francis & Audrey Sims
KICS PE Teacher (Francis)

"The 2019-2020 school year was an excellent one for the Primary PE program at KICS. While it was disappointing that our time at school was cut short due to COVID-19, it was fun putting together a fitness program that kids could do at home with their families during the lockdown. This past year I came up with a new way to explain to kids what we do in Primary PE at KICS: PE is all about learning how to use, protect, and enjoy the body that God gave you." - Francis Sims

IMPACT STORY: MADISON KEMPTON

"One of the highlights of serving at KICS is the opportunity to mentor 8th-grade girls. The girls bring jokes, laughter, and the realness of their personal journeys. Building our community inside the school but outside of academics has been a joy. Teaching in this season may be challenging and wildly different. Still, my students always remind me how special it is to be allowed into their lives and walk alongside them in their personal, spiritual, and academic journey.

This season of education during COVID-19 has brought out the amazing resilience in our students. Never have I experienced such joy and gratitude for being in the classroom, even if it is online, as I have now. I love how much our students yearn to be back together and have a deep desire to learn more. I admire how they have risen to the challenge of distance learning, not allowing uncontrollable circumstances to bring them down. Instead, they walk each day with joy, excitement, and great expectation of what each day will hold."



Madison Kempton,
KICS Math & Physics Teacher

PROJECT HIGHLIGHTS

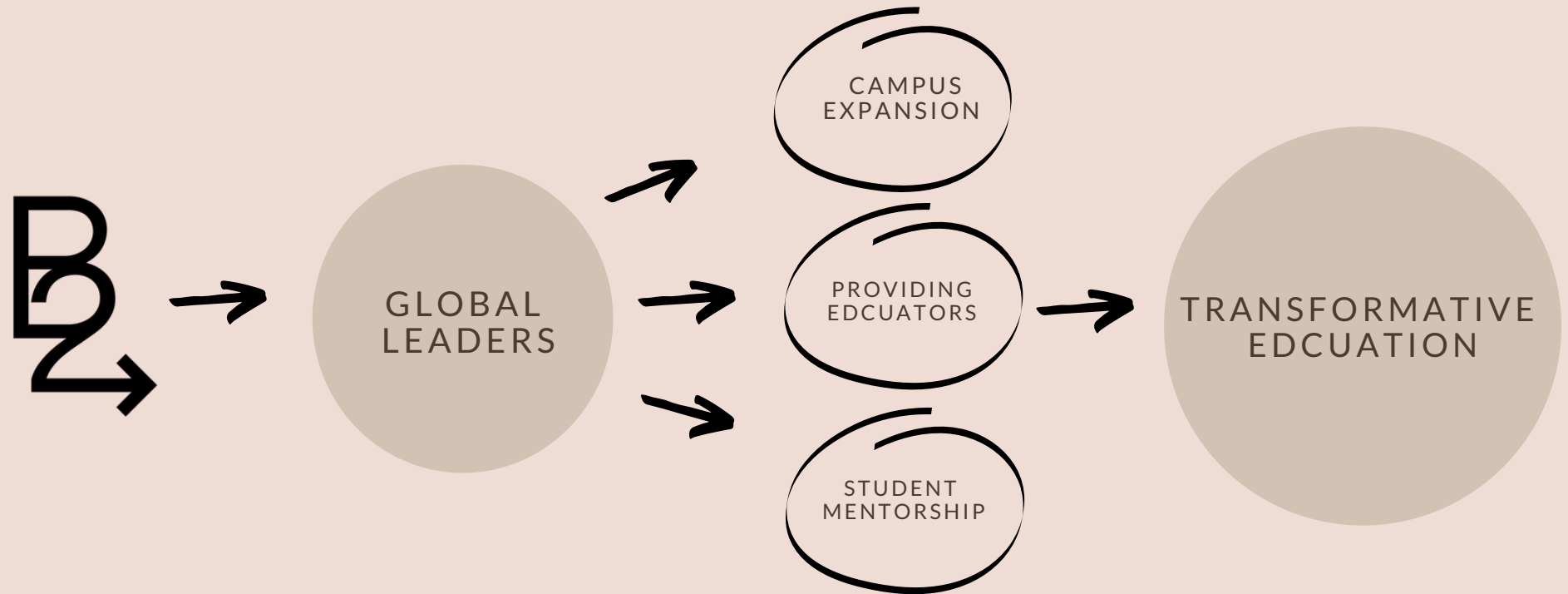


KIGALI INTERNATIONAL COMMUNITY SCHOOL (KICS)

KIGALI, RWANDA



KICS our model



The Kigali International Community School remains the flagship of the B2THEWORLD movement.

STATS

- Total student enrollment 2019-2020: 315
- 2019 KICS Graduates are attending 14 universities in 4 countries.
- Countries represented among the student body: 40

HIS VISION OUR FUTURE CAMPAIGN

His Vision our Future was birthed out of the vision to provide quality Christ-centered education in Kigali, Rwanda, at the Kigali International Community School (KICS). As Rwanda rebuilt after the genocide, we've been honored to play a small part in this country's education. We dream of the day of building world-class educational centers at KICS, which specialize in learning support, performing arts, science, ICT, athletics, and global leadership.

We are currently in stage 3 of this campaign: We have secured 21 acres of land for the new building, and we are in the process of strategic planning and developing the architectural design.



SENDING AGENCY FOR EDUCATORS

This year, B2THEWORLD partnered with KICS by staffing and providing seven educators and school leaders who served and led during the 2019-2020 school year. Also, B2THEWORLD was able to secure two new employees who will serve in key leadership positions at KICS in the upcoming school year. B2THEWORLD staff serving at KICS made a significant impact in stewarding quality education through the launch of "KICS Learning Continues" (an online learning platform) when COVID-19 reached Rwanda.

These teams help fulfill our mission of blessing the children, families, and communities we serve in Rwanda. We are excited to explore partnerships with more schools in the future as we expand our reach as a sending agency in the future.



IMPACT STORY: ALVIN NSENGIMANA

2017 KICS Alumni, Alvin Nsengimana, is a great example of the excellence that emerges from Kigali International Community School. After graduating, Alvin enrolled in Biola University, where he is now studying Engineering Physics and Industrial Engineering. Alvin is also a B2THEWORLD Board member with a wealth of knowledge to offer from a student perspective.

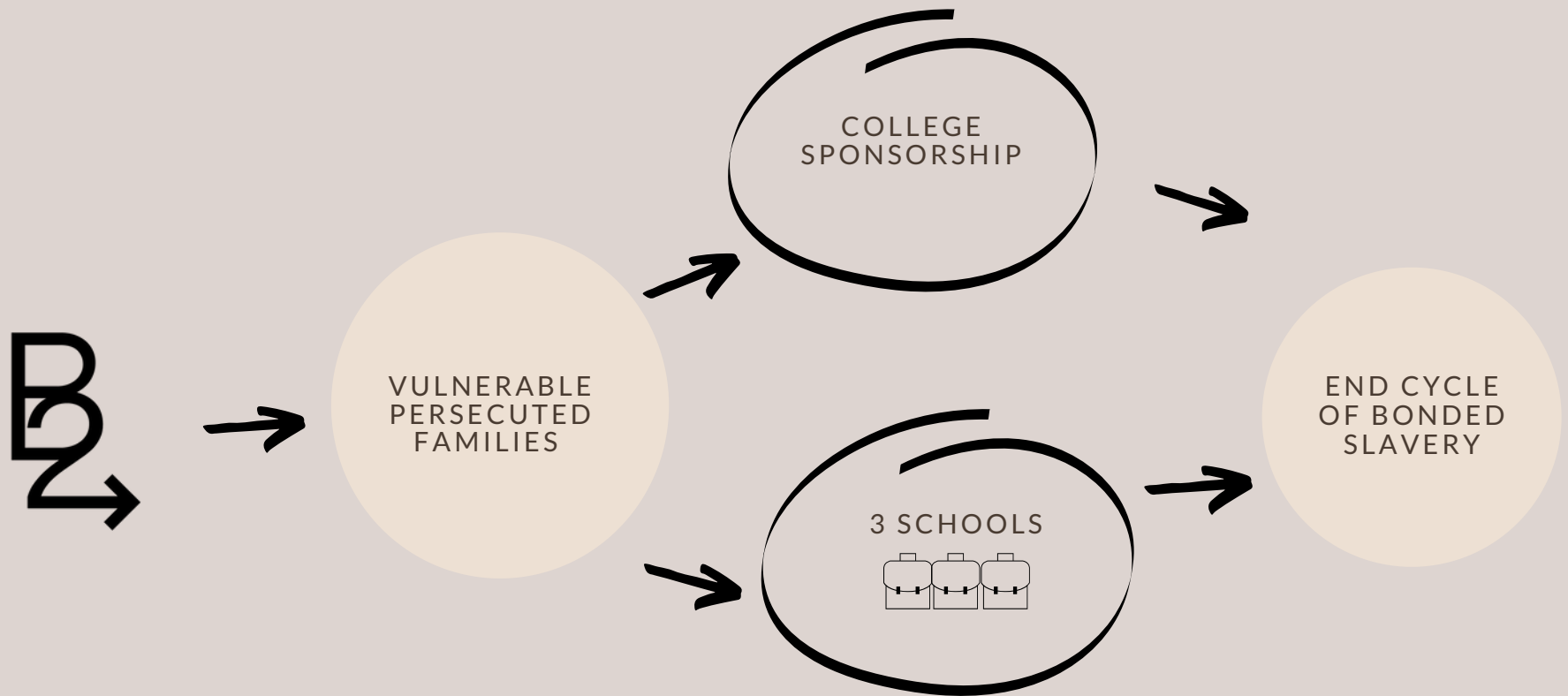
"KICS was the first Christian School I attended. The leadership style is very personal. The mentors and teachers that worked with me regularly spoke into my life. It set the foundation for my faith, which is now very important to me." Alvin Nsengimana



PAKISTAN



PAKISTAN our model



TRANSFORMATIVE EDUCATION

B2THEWORLD partners with an experienced educator in Pakistan serving vulnerable, persecuted families who would otherwise not afford to send their children to school. The majority of these families are forced to work in brick kiln factories where children and parents labor all day, making bricks to pay off perpetuating loans to meet daily needs of food and shelter.

B2THEWORLD aims to bless these families by ending this cycle of bonded labor for their children and changing their future trajectory through transformative education. This year B2THEWORLD sponsored 50 students from vulnerable families to continue to college. Also, B2THEWORLD supports the operations of three schools serving over 1000 children in these impoverished communities.

THE B2 BLESSING FUND

As COVID-19 reached families in countries that we serve, B2THEWORLD introduced the B2 Blessing Fund as a benevolence fund that would respond to this crisis's immediate needs.

In Pakistan, the families that B2THEWORLD serves faced new challenges. On an average day, they work as street cleaners and brick makers, existing hand to mouth with nothing left for the next day. With strict lockdowns in place, their livelihoods were in jeopardy, and starvation and hunger were immediate.

The B2 Blessing Fund responded to this need by providing 561 families with food rations with encouragement that they are not alone in these desperate times.



STAFF TRIP

In September, B2THEWORLD staff had the opportunity to visit our partner schools in Pakistan. Ben and Micah were overwhelmed by the warm reception they received at each school and project site they visited.

The Pakistan trip included a visit to three schools, brick kiln factories, and meetings with the B2THEWORLD college sponsorship fund recipients. Ben and Micah were heartbroken by what they saw and witnessed. Still, they were inspired by how B2THEWORLD is making a tremendous difference in the lives of over 1000 students receiving educational support in Pakistan.



IMPACT STORY: SIKANDER MASIH

"My father is a sweeper in a factory. I have one brother and one sister who are both also studying in a school. We live in a small house. Almost half of my father's salary is used to pay house rent. Sometimes we can't pay rent for the house. My father cannot afford my college fee and other education expenses, so he told me I would also have to work with him as a sweeper to fulfill our expenses. I thank God for this scholarship. I have continued my studies, and after my studies, I can get a respectful job. I want to become a doctor so that I can serve my community. Moreover, I want to make my parents feel proud of me. If I didn't receive this college scholarship, I would be doing a job as a sweeper like my forefathers. Thank you so much."

Sikander Masih is a student in the first cohort of B2THEWORLD college sponsorship recipients.



GLOBAL EDUCATORS GATHERING (GEG)



GEG our model



The B2THEWORLD Global Educators Gathering (GEG) was started in 2018 to bring educators together from around the world who share a common goal with B2THEWORLD - to provide a transformative educational experience for children and families in countries that are recovering from war. We bring school leaders from around the world to learn, collaborate, and navigate the challenges they face in their various school settings.

This year we hosted 23 educators representing eight countries and 15 schools.

Sessions led by Speaker Dr. Janet Nason focused on child Safety, the Christian School Leader's heart, and more.



EDUCATOR IMPACT: BENJAMIN OPONDO

In our 2019 GEG, during his opening remarks, Dr. Benjamin Thomas paused a question: "What have you been entrusted with by God?"

This question set me on an introspective journey of reflecting upon my role as a father, husband, head of school, myself, and evangelist in my local church. I have learned to say no to other destructive activities and focus on the four primary assignments as they form the core of what God will appraise me. I have also sought ways of equipping myself fully to satisfactorily perform these four roles to which I have been called.

Dr. Nason Janet reminded us that we are a walking curriculum; that a school is a shadow of the leadership. Therefore, we must commit ourselves to being "Christ" and serve the school wholeheartedly. That has had a significant impact on the life that I live as I discharge my four roles. I am reminded that my life is a positive testimony of the vision, the mission, and the core values of both the school, the church, and my personal testimony in Christ.

Dr. Thomas's four school leadership dimensions were setting direction, developing people, managing the instructional program, and developing the school. These dimensions helped me articulate our school mission and vision statements and make sure that our planning, acting, and reflections are mission-directed and goal-oriented. It helped me understand that leadership is not in the job description but appears in the end-results.

Leadership is a relational process of purposefully influencing people towards a futuristically desirable and life-changing scenario. It helped me understand that all we do is for God and that the students we have today are "the arrows that we are sharpening today, to shoot into the future tomorrow." Thank you. May God bless B2THEWORLD.

*Benjamin Opondo
Head of School, Empower International Academy*



FINANCIALS



FINANCIALS

Statement of Revenue, Expenditures, and Changes in Net Assets

Revenue:

Contributions	\$604,207
Total Revenue	<u>\$604,207</u>

Expenses:

Program Expenses	\$420,964
Management & General	\$66,071
Fundraising Expenses	\$43,154
Total Expenses	<u>\$530,189</u>

Change in Net Assets \$74,018

Net Assets, Beginning of Year \$46,377

Net Assets, End of Year \$120,395

Statement of Assets, Liabilities, and Net Assets

Assets:

Cash on hand	\$125,727
Total Assets	<u>\$125,727</u>

Liabilities:

Credit Card Payable	\$5,332
Total Liabilities	<u>\$5,332</u>

Net Assets:

Without donor restrictions	\$44,717
With donor restrictions	\$75,678
Total Net Assets	<u>\$120,395</u>

Total Liabilities & Net Assets \$125,727

B2THEWORLD has presented its financial activities using the "modified cash basis" method of accounting for fiscal year June 1, 2019-May 31, 2020.

Full financial reports and 990 are available upon request

Since 2017, B2THEWORLD has funded educational projects providing **2000 students** in Rwanda and Pakistan with **transformative education**.

Amount raised this year

\$510,172

for transformative
education

\$94,035

for general and
fundraising costs

Amount invested this year

This year, we invested

\$420,964

in funding transformative
educational services and
activities

This year, we

invested **\$109,225**

in building a team
and systems for a
great future



**This year,
B2THEWORLD
spent:**

80%
of total expenses
on funding educational
services and activities in
Rwanda and Pakistan

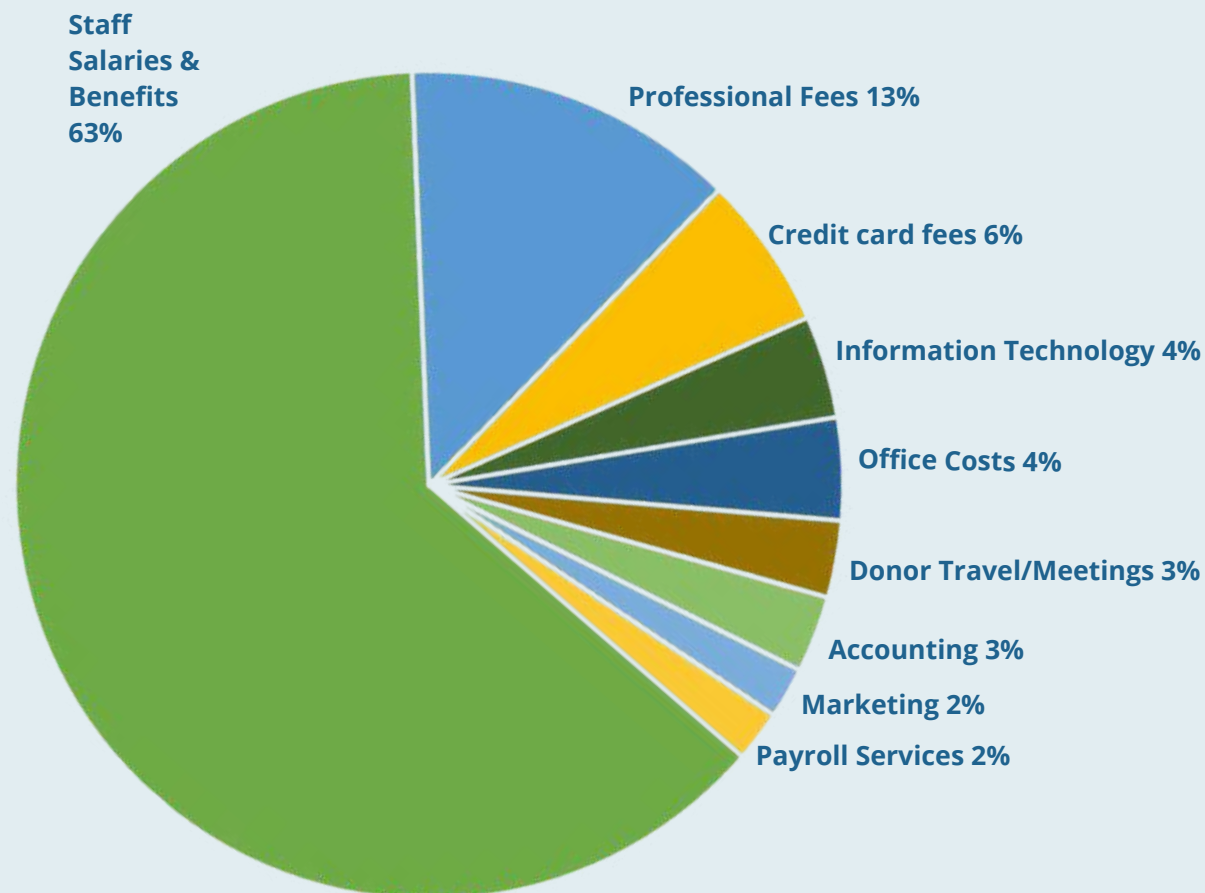
12%
of total expenses
on general
operating costs

8%
of total expenses on
fundraising costs

General & Fundraising Costs

B2THEWORLD invested \$109,225 in operating and fundraising expenses in this fiscal year. For every program contribution we received, we retained only 10% to support our operational and fundraising costs. We are also thankful for generous donors who have specifically contributed to our operating and fundraising budget.

Our total general and fundraising overhead costs for this year are broken down into the following categories:





THE FUTURE

NEXT STEPS

As we continue to trust God for what it means to support the work of B2THEWORLD in Rwanda and Pakistan, we continue to pray and act towards building out the foundation to be in every country recovering from war and devastation eventually. While we know that will be a long journey that will take decades, here are some key initiatives we are focusing on for this year:

Strengthening our Capacity: By God's grace, our team is growing, and we have more growing to do. We are thankful to have a volunteer development director and two development coordinators to be hired in this upcoming fiscal year. We believe these pivotal hires will help us grow the necessary resources we need as an organization to build out the infrastructure required as we grow to a more global impact.

Rwanda Project: KICS continues to take steps forward, even amid COVID19. In addition to serving students through COVID-19, we will support the finalizing of an architectural master plan for the recently purchased 21 acres of land for the KICS expansion project.

Pakistan Project: Our partnership in Pakistan continues to grow, and the needs are humbling. While we have all felt the impact of COVID19, the families we serve in Pakistan have had a terrible time. We will be increasing our college sponsorships to sponsoring 85 students this coming year. Additionally, we aim to purchase a piece of property to allow for building a college in a key city. This building will enable our students to go to school safely and prevent raising rents due to exploitation.

Global Educators Gathering: As GEG's impact continues to grow, we will look to extend its reach through an online version of the gathering. This will be a first for us. Thankfully, we were able to secure key funding necessary to expand this work and utilize it in this way.

Future Projects: In addition to these existing projects, we are working to lay the foundation for launching two new projects in the years ahead. We've been engaged in key conversations, data gathering, and prayer with two leaders in two separate countries. Each of these projects would be launching a school from scratch, which would complete phase one of B2THEWORLD.

GET INVOLVED

While there are many ways to get involved, here are a few key steps you could take:

- Gather 3-5 friends together for a Zoom call with our development team to help them learn more about B2THEWORLD.
- Consider launching a fundraising campaign on our behalf for your birthday or special event.
- Follow us on one or more of our social media platforms using @B2THEWORLD



- Subscribe and share our video newsletter with at least 5 of your friends and family.
- Consider B2THEWORLD as one of your top three giving priorities for this coming year.



THANK YOU.

Thank you so much for your partnership with B2THEWORLD.

We are truly grateful to you and humbled at how God continues to lead and be present with us in His work.

We are thankful to be stewarding His vision in this life-shaping work.

Can I invite you to pray "The Blessing" each day over the work of B2THEWORLD? May His face shine upon each student, family, and community in every country recovering from war for generations to come.

"The Lord bless you and keep you
make His face shine upon you
and be gracious to you
The Lord turn His face toward you
and give you peace
May His favor be upon you
and a thousand generations
Your family and your children
and their children, and their children"





PO Box 3306,
Merrifield, VA 22116
info@b2theworld.com
www.b2theworld.com

