

Vanity Installation Guidelines

Wall-mounted | Floor-standing | With basin

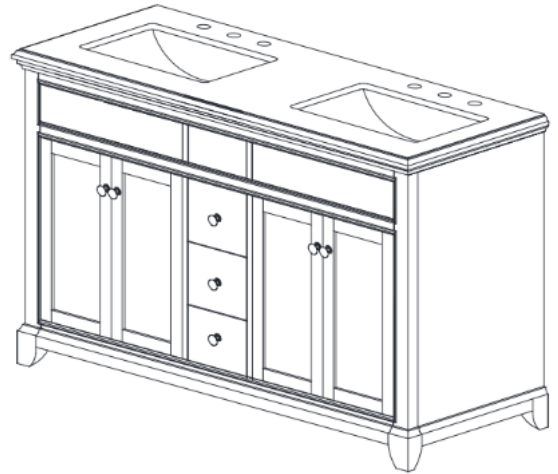
Introduction

This manual is designed to guide you through the installation of all standard vanity types, from unpacking to final placement. Whether wall-mounted or floor-standing, following these steps ensures safety, stability, and long-lasting use.

Safety Precautions

(Line Drawing: Safety gloves, goggles, stable surface illustration)

- Wear protective gear (gloves, safety glasses).
- Ensure power and water supplies are shut off.
- Always lift the unit with 2 persons.
- Keep small parts away from children.
- Avoid dragging the vanity on rough surfaces.



Tools Required

(Line Drawing: Tool icons – drill, screwdriver, level, tape, pencil, wrench, silicone gun)

- Electric drill
- Spirit level
- Measuring tape
- Pencil/marker
- Screwdriver
- Wall plugs and screws (appropriate to wall type)
- Silicone sealant
- Pipe wrench (if plumbing included)



Philips Screwdriver



Sealant



Tape Measure



Safety Glasses

Unboxing the Vanity

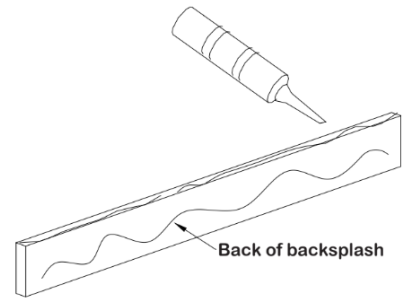
(Line Drawing: Vanity inside foam packaging, labeled parts list)

- Place the package on a flat, clean surface.
- Open carefully using a box cutter (avoid deep cuts).
- Check all parts against the included checklist:
 - Vanity cabinet
 - Basin (if applicable)
 - Mounting brackets / legs
 - Hardware pack
 - Mirror unit / shelves (optional)
- Inspect for damages. Report if any within 24 hours.

Pre-Installation Checks

(Line Drawing: Wall type test, water pipe layout illustration)

- Check wall strength (for wall-mounted models)
- Measure space & mark the center point
- Verify water outlet/inlet positions
- Check surface level and alignment
- Ensure easy access to electrical/plumbing points

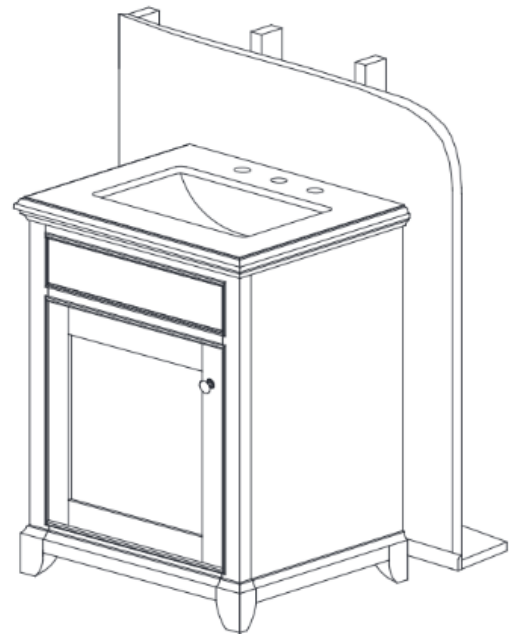


Installation Process

A. For Floor-Standing Vanities

(Line Drawings: Steps 1–5 with arrows showing movement)

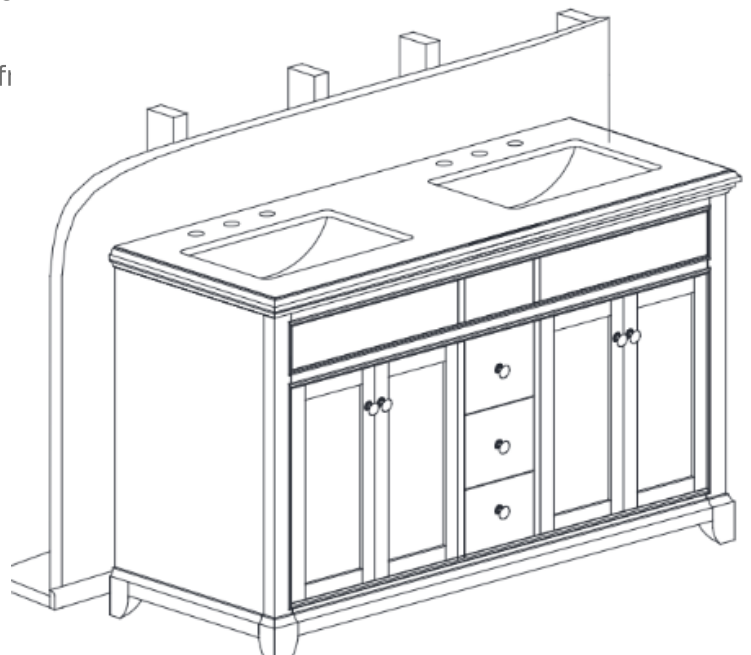
1. Mark the placement based on measurements.
2. Place the vanity gently in position.
3. Use a level to ensure the base is even.
4. Fix to the wall using anti-tip brackets (if included).
5. Secure the basin on top with silicone sealant.
6. Connect plumbing and drain.



B. For Wall-Mounted Vanities

(Line Drawings: Brackets on wall, level check, cabinet hanging)

1. Mark the bracket height (usually 85–90cm from floor).
2. Drill holes and insert wall plugs.
3. Fix the mounting brackets securely.
4. Hang the vanity on brackets.
5. Check level in all directions.
6. Fix basin with silicone.
7. Connect plumbing and waste.



Plumbing & Electrical Connections

(Line Drawing: Pipe connector, silicone application, tap installation)

- Use a flexible hose for water inlet.
- Seal joints with plumber's tape.
- Connect basin waste to trap and outlet.
- Apply silicone around basin edges for waterproofing.
- If vanity has lighting, get a certified electrician to wire it.

Final Checks & Maintenance Tips

(Line Drawing: Inspection checklist, cleaning cloth icon)

- Wipe down and remove dust.
- Check all drawers/doors for smooth function.
- Test tap, basin drainage, and lights (if applicable).
- Wait 24 hours before using for silicone to fully cure.

Maintenance:

- Clean with mild soap and soft cloth.
- Avoid harsh chemicals and abrasives.
- Tighten screws every 6 months.

