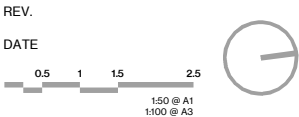


# COTHAM ROAD

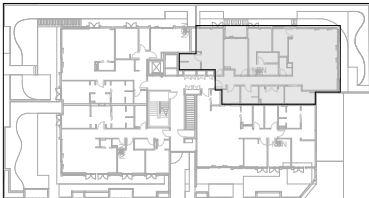
365 COTHAM ROAD, KEW  
VIC 3101



LEGEND

CT	COOKTOP	Q	QUEEN BED
DW	DISHWASHER	S	STORAGE
F	FRIDGE	SK	SINK
FP	FIREPLACE	TV	TELEVISION
K	KING BED	WM	W. MACHINE
OV	OVEN	DR	DRYER

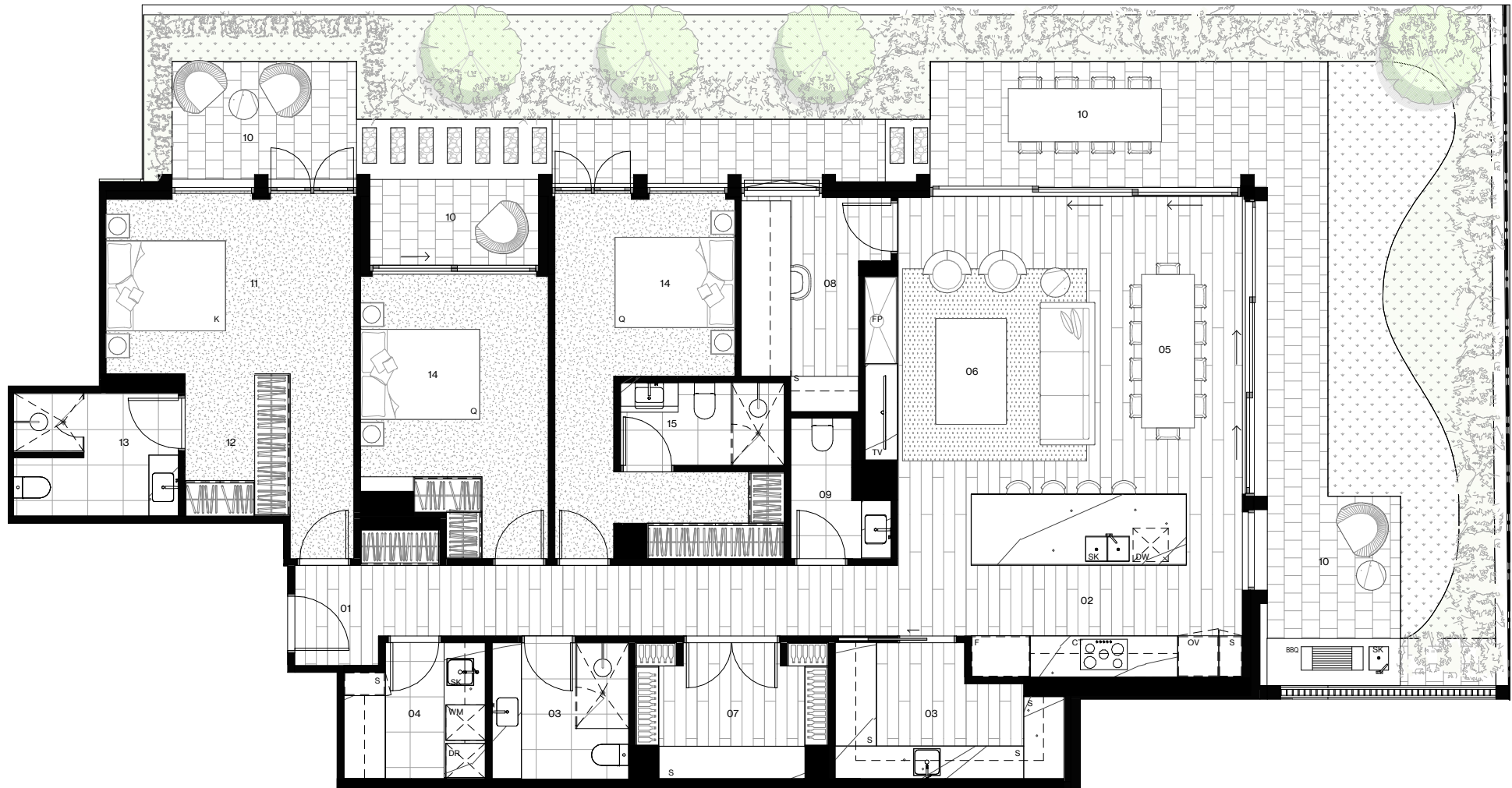
KEY PLAN



## APARTMENT G04

INTERNAL AREA	179.0 m <sup>2</sup>
EXTERNAL AREA	110.0 m <sup>2</sup>
BEDS	3 BED
BATHS	3.5 BATH
CARS	2 CAR

01 - ENTRY	09 - POWDER ROOM
02 - KITCHEN	10 - TERRACE
03 - BUTLERS PANTRY	11 - MASTER BEDROOM
04 - LAUNDRY	12 - MASTER W.I.R.
05 - DINING	13 - MASTER ENSUITE
06 - LIVING	14 - BEDROOM
07 - CELLAR	15 - ENSUITE
08 - STUDY	



**CERA  
STRIBLEY**

© 2021 Cera Stribley Pty Ltd. The IP (including copyright) in this document is owned by Cera Stribley. This document may also contain confidential information belonging to Cera Stribley. You are only permitted to use material in this document for the purpose of marketing the properties and for no other purpose. Measurements contained in this document are approximate only, subject to change, should not be relied on by any person as accurate when purchasing the properties and should not be used for obtaining permits. Rather than relying on measurements supplied in this document, purchasers should refer to the properties' formal plans and the terms and conditions of sale before purchasing the properties. Loose furniture and white goods depicted within the document are for reference purposes only and are not for sale.