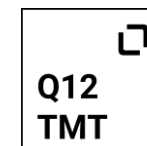


mgm Q12-TMT – Test Management Tool

# Professional test management. By experts for experts.

Product Sheet & Pricing Plans (as of 4 December 2025)



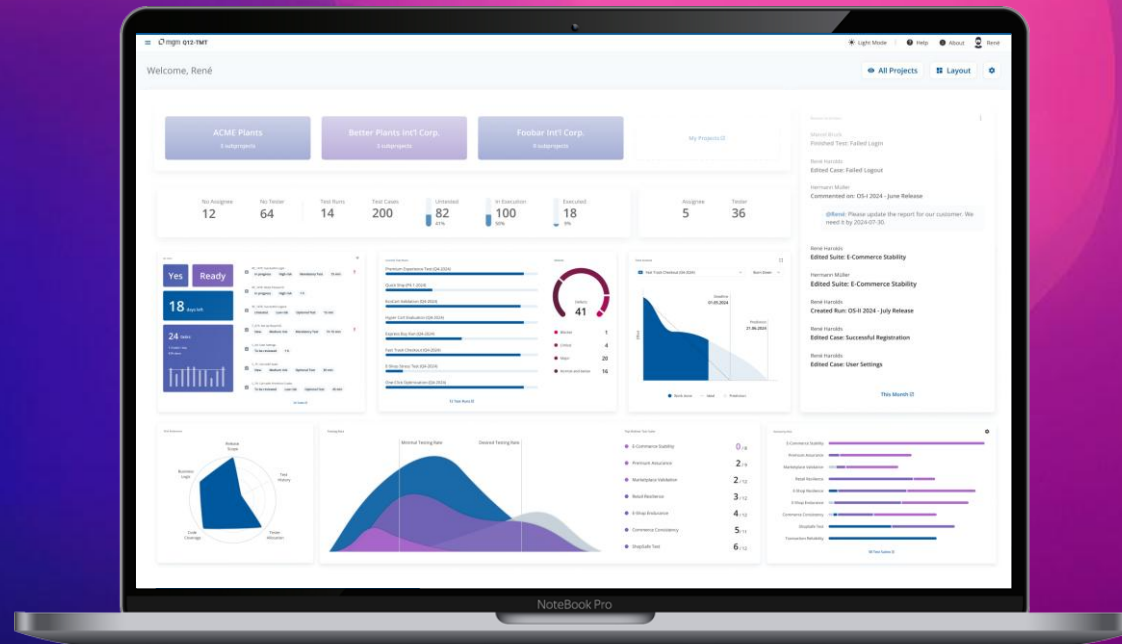
Munich/HQ Aachen Bamberg Berlin Đà Nẵng Dresden Geretsried Grenoble Hamburg Hồ Chí Minh City Cologne Landshut Leipzig Nuremberg Porto Praha Salzburg Stuttgart Washington

mgm technology partners

# mgm Q12-TMT – Test Management Tool



TMT is the professional tool for structured test case creation, planning, execution, documentation and reporting. **By experts for experts.**

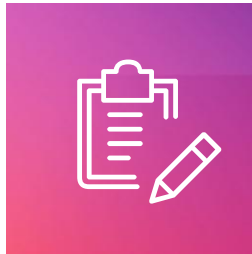


- Risk Management & Risk-based Testing
- Expert Level Test Process Management
- Software Lifecycle Testing
- Teamwork & Collaboration
- Efficient User Guidance
- Cloud-based & On-premise Solutions

# mgm Q12-TMT – Feature Highlights

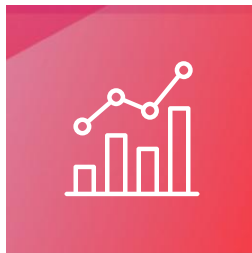


**Structured testing is pivotal in modern business software development.**  
mgm provides TMT, a tool for managing test processes and scenarios.



## Test Process Management

- Test case management
- Test planning & execution
- Reporting & KPI-driven dashboard



## Risk Management

- Automated risk analysis of business logic, historical data & release scope
- Risk-based testing & prioritization



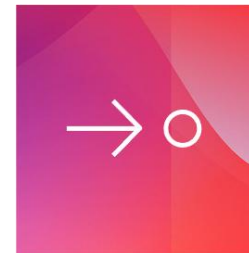
## Software Lifecycle Testing

- Semantic versioning
- Parallel releases
- Test case history



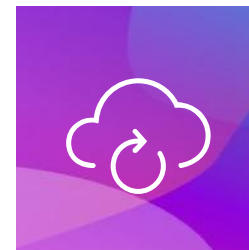
## Teamwork

- Collaboration
- Review processes
- Concurrent working



## Efficient User Guidance

- Modern, Ergonomic
- Split views
- Best practises



## Cloud-based and On-premise Solutions

- Software-as-a-Service with maintenance, updates, and backup included
- On-premise option for enterprise customers

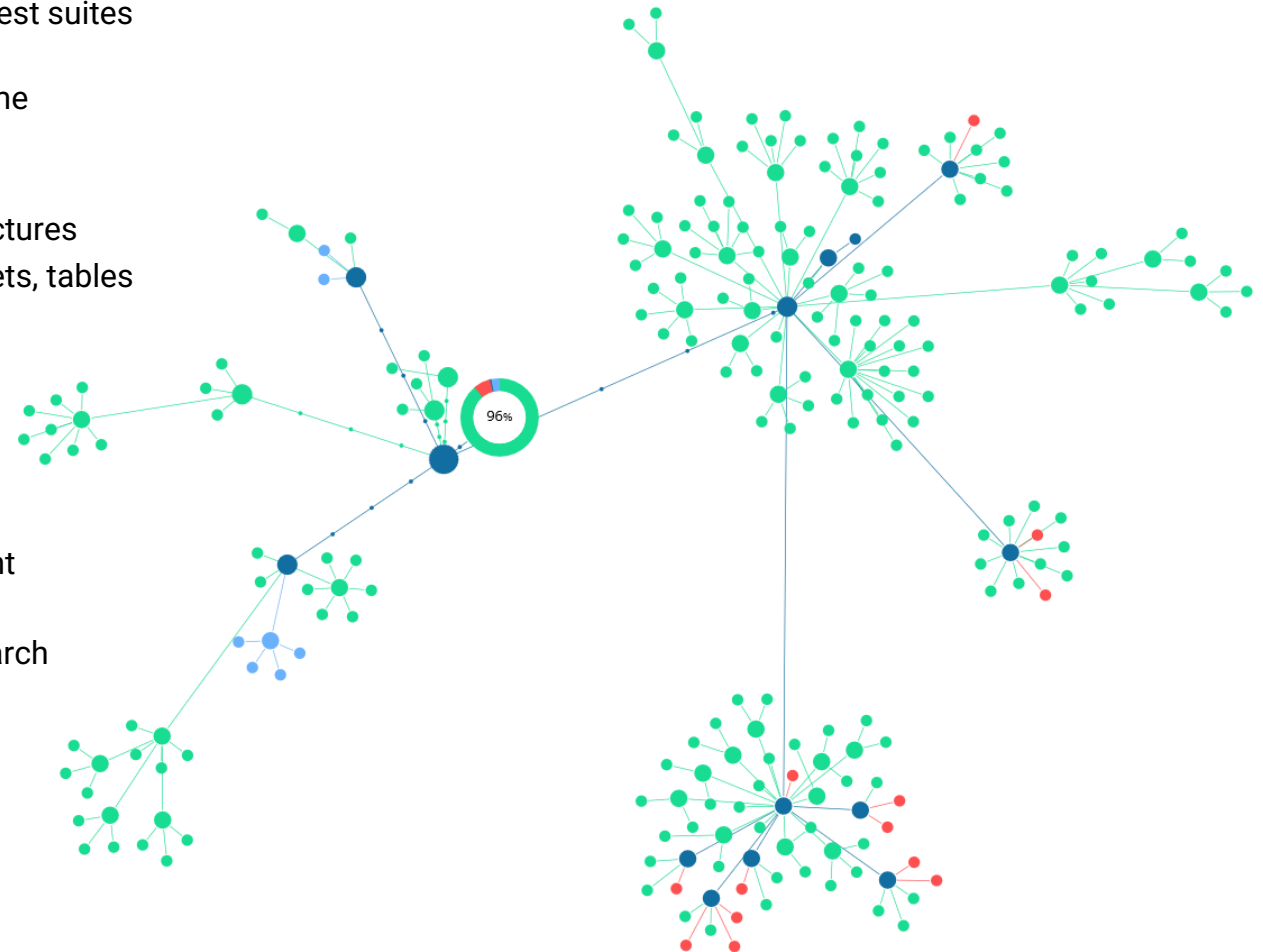


# Features Longlist



**TMT offers efficient performance through modern and consistently structured interfaces.  
It employs internationally approved standard processes and best practises:**

- Organization of project and subproject contents through test suites and test cases
- Division of test cases into preconditions, test steps, runtime parameters, and metadata
- Management of screenshots and file attachments
- Search and filter functionality within complex project structures
- Formatted and preformatted text, sorted lists, code snippets, tables
- Autocomplete for common form inputs
- Smart select features for rapid test scenario creation
- Dashboard with KPIs
- Test case review process, Test case history
- Comparison of test case and test execution
- Link to external resources (documents, ticket management systems, test environment, etc.)
- PDF generation of test cases, test reports, and filtered search results
- Handling concurrent working
- Background processing of system tasks
- Content tagging and tag management
- Test run results diagram for instant status reports



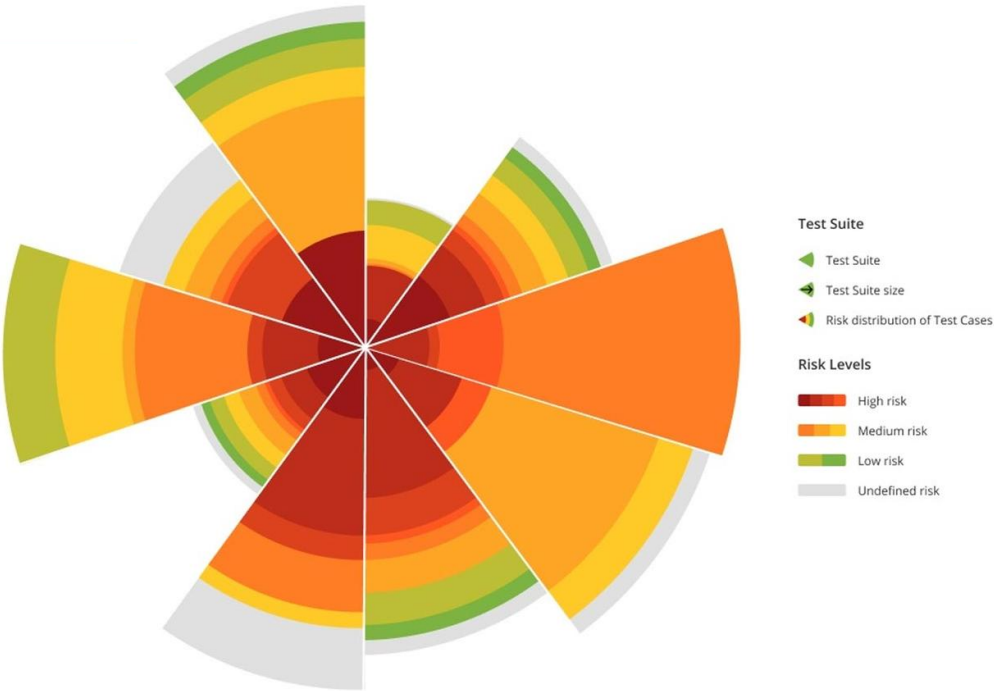
# Features Longlist



- Link with Atlassian Jira or Azure Devops directly in TMT
- Accessibility support, keyboard navigation, also in diagrams  
Migration from legacy systems (i.e. Testrail™, structured files)
- Project versioning aligned with software development status
- Automatic version delta setting and easy usage with smart select
- API integration for integrating third-party systems and other testing disciplines, i.e. test automation, security testing, performance testing
- Display of automated test case levels and presentation of test automation results
- Active directory connection SAML, ADFS
- Single sign-on via OpenAuth2, two-factor authentication
- Automatic multi-dimensional risk-based testing, risk assessment, and risk mitigation suggestions
- Automation level and results display
- Raise feature requests to extend the Q12-TMT functionality

Test runs

Title	ID	Created on / Closed on	State	Tester count	Test results
Frontend and Backend Login	R_95	2023-08-15 - ongoing	Open	1	<div><div></div></div>
General Layout	R_94	2023-08-15 - ongoing	Open	0	Currently, there is no test case running
Checkout & Recalculation	R_89	2023-07-26 - ongoing	Open	1	<div><div></div></div>
Payment	R_82	2023-07-22 - ongoing	Open	0	<div><div></div></div>
Order Summary	R_81	2023-07-21 - ongoing	Open	0	<div><div></div></div>
Order Confirmation	R_80	2023-07-19 - 2023-07-19	Closed	0	<div><div></div></div>
Order Processing	R_74	2023-06-12 - 2023-09-22	Closed	2	<div><div></div></div>
Order Tracking	R_69	2023-06-05 - ongoing	Open	0	<div><div></div></div>
Customer Self-service	R_67	2023-05-30 - 2023-05-30	Closed	0	<div><div></div></div>
Returns	R_65	2023-05-24 - 2023-09-28	Closed	0	<div><div></div></div>
Newslatter Subscription	R_64	2023-05-17 - ongoing	Open	0	<div><div></div></div>



The availability of advanced functions depends on the pricing plan selected.

# Pricing Plans (EUR)



For teams with up to 10 users,  
versioning included

## BASIC

Setup 0 €

- Custom subdomain ✓
- Up to 10 users
- Unlimited Projects & data
- Structured testing ✓
- PDF prints ✓
- Rich text, mark-up ✓
- Versioning ✓
- Risk-based testing ✗
- Test automation monitoring ✗
- API usage ✗
- AI support ✗
- Migration from legacy system ✗
- Single sign-on (SAML/ADFS) ✗
- 50 GB Storage limitation
- Support: Ticket system, basic SLA
- Hosting - Private Cloud
- Feature requests ✗
- Testing-as-a-Service ✗
- Predefined test catalogs ✗

6 months, thereafter monthly cancellation possible

150 € per month

For large teams and many projects,  
risk-based testing included

## PROFESSIONAL

Setup 4'900 €

- Custom subdomain ✓
- >10 up to 100 users  
(available in 10-user packages)
- Unlimited Projects & data
- Structured testing ✓
- PDF prints ✓
- Rich text, mark-up ✓
- Versioning ✓
- Risk-based testing ✓
- Test automation monitoring ✓
- API usage ✓
- AI support with on/off control ✓
- Optional: Migration from legacy system ✓
- Single sign-on (SAML/ADFS) ✗
- 150 GB Storage limitation  
(+50 GB per additional 10 users)
- Support: Ticket system & phone, business SLA
- Hosting - Private Cloud
- Feature requests ✗
- Testing-as-a-Service ✗
- Predefined test catalogs ✗

6 months, thereafter monthly cancellation possible

from 23 €\* per month/user

\*see pricing tiers at [q12-tmt.com](https://q12-tmt.com)

For large enterprises

## ENTERPRISE

Price on demand

- Custom subdomain ✓
- Unlimited Users
- Unlimited Projects & data
- Structured testing ✓
- PDF prints ✓
- Rich text, mark-up ✓
- Versioning ✓
- Risk-based testing ✓
- Test automation monitoring ✓
- API usage ✓
- AI support with on/off control ✓
- Optional: Migration from legacy system ✓
- Single sign-on (SAML/ADFS) ✓
- Individual Storage
- Individual Support
- Hosting - Private cloud or on-premise
- Optional: Feature requests ✓
- Optional: Testing-as-a-Service ✓
- Optional: Predefined test catalogs ✓

Individual Contract period

Price on demand

Basic test management for learners & teachers

## EDUCATIONAL

Setup 0 €

- Custom subdomain ✓
- 3 users
- 1 Project, 3 Runs
- Structured testing ✓
- PDF prints ✓
- Rich text, mark-up ✓
- Versioning ✗
- Risk-based testing ✗
- Test automation monitoring ✗
- API usage ✗
- AI support ✗
- Migration from legacy system ✗
- Single sign-on (SAML/ADFS) ✗
- 1 GB Storage limitation
- Support: Ticket system, no SLA
- Hosting - Private Cloud
- Feature requests ✗
- Testing-as-a-Service ✗
- Predefined test catalogs ✗

Proof of affiliation to an educational institution required

0 € per month

Pricing Plans (USD)



For teams with up to 10 users,  
versioning included

### BASIC

Setup \$0 USD

Custom subdomain ✓

Up to 10 users

Unlimited Projects & data

Structured testing ✓

PDF prints ✓

Rich text, mark-up ✓

Versioning ✓

Risk-based testing ✗

Test automation monitoring ✗

API usage ✗

AI support ✗

Migration from legacy system ✗

Single sign-on (SAML/ADFS) ✗

50 GB Storage limitation

Support: Ticket system, basic SLA

Hosting - Private Cloud

Feature requests ✗

Testing-as-a-Service ✗

Predefined test catalogs ✗

6 months, thereafter monthly cancellation possible

\$160 USD per month

For large teams and many projects,  
risk-based testing included

### PROFESSIONAL

Setup \$4'900 USD

Custom subdomain ✓

>10 up to 100 users  
(available in 10-user packages)

Unlimited Projects & data

Structured testing ✓

PDF prints ✓

Rich text, mark-up ✓

Versioning ✓

Risk-based testing ✓

Test automation monitoring ✓

API usage ✓

AI support with on/off control ✓

Optional: Migration from legacy system ✓

Single sign-on (SAML/ADFS) ✗

150 GB Storage limitation  
(+50 GB per additional 10 users)

Support: Ticket system & phone, business SLA

Hosting - Private Cloud

Feature requests ✗

Testing-as-a-Service ✗

Predefined test catalogs ✗

6 months, thereafter monthly cancellation possible

from \$25 USD\* per month/user

\*see pricing tiers at [q12-tmt.com](https://q12-tmt.com)

For large enterprises

### ENTERPRISE

Price on demand

Custom subdomain ✓

Unlimited Users

Unlimited Projects & data

Structured testing ✓

PDF prints ✓

Rich text, mark-up ✓

Versioning ✓

Risk-based testing ✓

Test automation monitoring ✓

API usage ✓

AI support with on/off control ✓

Optional: Migration from legacy system ✓

Single sign-on (SAML/ADFS) ✓

Individual Storage

Individual Support

Hosting - Private cloud or on-premise

Optional: Feature requests ✓

Optional: Testing-as-a-Service ✓

Optional: Predefined test catalogs ✓

Individual Contract period

Price on demand

Basic test management for learners & teachers

### EDUCATIONAL

Setup \$0 USD

Custom subdomain ✓

3 users

1 Project, 3 Runs

Structured testing ✓

PDF prints ✓

Rich text, mark-up ✓

Versioning ✗

Risk-based testing ✗

Test automation monitoring ✗

API usage ✗

AI support ✗

Migration from legacy system ✗

Single sign-on (SAML/ADFS) ✗

1 GB Storage limitation

Support: Ticket system, no SLA

Hosting - Private Cloud

Feature requests ✗

Testing-as-a-Service ✗

Predefined test catalogs ✗

Proof of affiliation to an educational institution required

\$0 USD per month

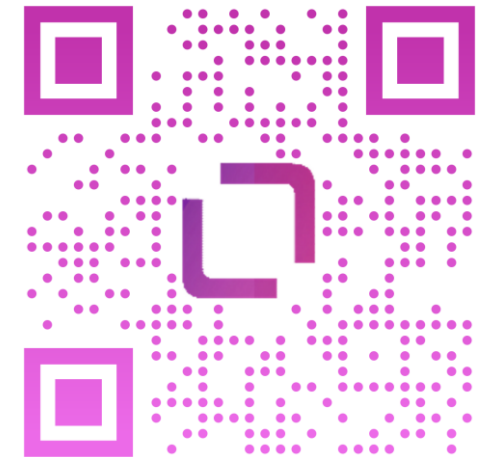
Q12-TMT Test Management Tool

# Try Yourself on Our Evaluation Environment

## Evaluation Trial

- Test management for structured QA
- Full features set, including risk-based testing and versioning
- Up to 6 months of usage, conditions apply
- Limited support, no extra service
- Upgrade to any other plan easily

*\$0 USD / month*



[q12-tmt.com](https://q12-tmt.com)

***Sing up now and start using Q12-TMT.***





# Professional Services



In addition to the TMT product, mgm provides the following test management-related services:

## **Test Center / Testing-as-a-Service:**

Our eQA team (extended QA) is a highly skilled and dedicated team that conducts user acceptance tests on behalf of the client. The team ensures client-centric, independent, and cost-effective software development oversight, delivering comprehensive reports to facilitate swift release decisions.

## **QA Expert Support:**

mgm has a team of hundreds of experienced QA professionals. We offer professional guidance and support to our clients during the set-up of new test teams.

## **Predefined Test Case Sets:**

The use of pre-existing structures can lead to extensive test coverage and time savings in many test scenarios. mgm provides predefined test case catalogs, which can be imported into your TMT environment. These include test case catalogs that are tailored for e-commerce projects, accessibility, and web security. Additional customization options are available.

## **Technical Consulting:**

In the realm of software testing, the operational setup, maintenance, and deployment are crucial. Leveraging our extensive experience from numerous software projects, mgm has developed best practices to optimize the efficiency, reliability, and security of QA operating environments. We offer these insights to our customers through consulting services.



# Q12-TMT Community



**Q12-TMT is continuously evolving. For enterprise customers, mgm offers the opportunity to participate or individualize.**

## **Feature requests from enterprise customers:**

mgm regards customers with an enterprise license as partners who actively participate in the further development of Q12-TMT. Depending on the specific contract model, features can be implemented by mgm for customer-exclusive use, or made available to all users via a reimbursement model.

## **Become a Q12-TMT reseller:**

mgm strives for long-term cooperation with our partners, as we are used to work in the project-based business. This also includes the possibility of partners acting as resellers of Q12-TMT who benefit from the license income through a revenue sharing arrangement.

## **Evolution of Q12-TMT:**

More than 200 QA experts at mgm use Q12-TMT in their everyday work life and contribute to improve the tool by giving feedback and expressing feature requests. New functions are being implemented and added continuously to Q12-TMT as features and improvements for all customers and users.

## **Evolution of the A12 low-code platform:**

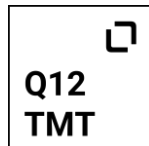
A12 is the technical basis of Q12-TMT, which is evolving constantly. All new features, improvements and security measurements foster to make Q12-TMT a modern and robust test management application.



# Contact



**You got questions about Q12-TMT and our offerings?  
Contact us – we look forward to hearing from you!**



*mail: [info@q12-tmt.com](mailto:info@q12-tmt.com)  
web: [q12-tmt.com](http://q12-tmt.com)*

mgm technology partners GmbH

Taunusstr. 23  
80807 Munich

Tel +49 89 / 35 86 80-0

[www.mgm-tp.com](http://www.mgm-tp.com)  
[info@mgm-tp.com](mailto:info@mgm-tp.com)