



Chobe River

Pangolin Voyager 2025 / 2026

Photo Safari

Letter From the Team

At Tusk Photo, we pride ourselves on providing exceptional safari experiences, where every detail is carefully curated to ensure your journey is nothing short of extraordinary. Our team of expert guides, who possess an intimate knowledge of the local wildlife and ecosystems, will be by your side, ready to share their insights and help you capture unbelievable photos.

Imagine exploring the vast savannahs, witnessing the majestic herds of elephants in Amboseli, or immersing yourself in the remarkable biodiversity of the Serengeti. Picture yourself standing in awe as you witness the raw power of lions on the hunt, or capturing the elegance of a leopard as it prowls through the golden grasslands. With Tusk Photo, these extraordinary moments will become a reality.

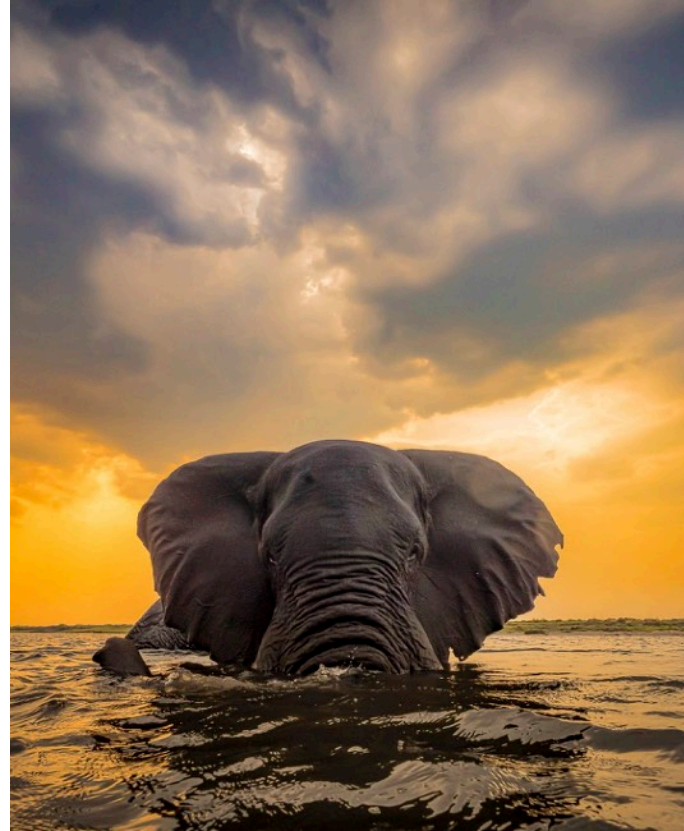
We understand that photography is more than just a hobby for you; it's a way to express your creativity and preserve memories that will last a lifetime. That's why we go the extra mile to ensure that you have the best opportunities to capture those unique shots. From providing expert guidance on camera settings and composition to positioning our vehicles strategically for the perfect angle, we are dedicated to helping you achieve your photography goals.

But a Tusk Safari is not just about wildlife and photography; it's about creating cherished memories and forging lifelong connections. Our team is committed to providing you with personalized attention, exceptional service, and a warm and welcoming atmosphere throughout your journey. We want you to feel like part of our Tusk family, sharing laughter, stories, and the sheer joy of exploring the best that nature has to offer.

Allow us to take you on a journey of discovery, where you will witness nature's wonders, capture breathtaking photographs, and create memories that will stay with you forever.

Please feel free to reach out to our friendly team for any further information or to discuss your specific requirements. We are here to assist you every step of the way. We can't wait to welcome you to the Tusk Photo family and share this incredible experience with you.

The Tusk Team



Overview

Discover the pristine beauty of the Chobe River, renowned for its abundant wildlife and stunning landscapes.

Experience the thrill of close encounters with elephants, majestic fish eagle and hippopotamus, and a myriad of other majestic creatures, all while cruising on the **NEW & IMPROVED** luxurious Pangolin Voyager Houseboat.

With exclusive access to photography geared boats, this safari offers an unparalleled chance to get up close and personal with some of Africa's most iconic animals.

This expertly curated safari adventure combines thrilling game viewing, enchanting river cruises, and luxurious accommodations to create an experience that will leave you in awe.

Join us on this extraordinary journey and capture breathtaking photos while creating lifelong memories in the heart of Africa's untamed wilderness. Book your Chobe River safari today and embark on the adventure of a lifetime



What You Can Expect

Immerse yourself in the captivating Chobe region, a world-renowned photographic hotspot that offers an unparalleled wildlife and birding experience. Embark on an unforgettable journey aboard the luxurious Pangolin Voyager houseboat as it gracefully cruises along the majestic Chobe River, providing exclusive accommodation within the heart of the Chobe National Park.

Prepare to be mesmerized by the breath-taking sights and incredible encounters that await you. Witness the awe-inspiring sight of swimming elephants as they gracefully glide through the mighty waters, creating a truly unforgettable photographic opportunity. Marvel at the impressive herds of buffalo roaming the riverbanks, and capture stunning images of graceful giraffes, lechwe, puku, hippo, impala, spotted necked otter and many more animals in their natural habitat.

As you explore the Chobe River, keep your camera ready for thrilling wildlife encounters. With the possibility of encountering magnificent predators such as lions, elusive leopards, and wild dogs, every moment on this tour holds the promise of unparalleled excitement and photographic rewards.

The Chobe River is a haven for bird enthusiasts, offering an extraordinary variety of avian species to photograph. Capture the majestic flight of the African fish eagle, witness the unique hunting behaviour of African skimmers, and observe the elegant rock pratincoles as they navigate the river's edge.

Step aboard the specialized photographic boats exclusively designed for capturing the stunning beauty of the Chobe River and its wildlife. These state-of-the-art vessels, meticulously crafted

with photographers in mind, offer a remarkable experience that elevates your safari adventure to new heights. Equipped with swivel chairs and gimbal camera mounts, these boats provide optimal stability and flexibility, allowing you to effortlessly capture those perfect shots from any angle. Whether you're tracking a herd of elephants, following the flight of a majestic eagle, or capturing the fast-paced action of hunting predators, these specialized boats ensure that you never miss a moment.

With the exclusive booking arranged by TuskPhoto, you will enjoy an intimate and personalized experience, fully immersing yourself in the wonders of the Chobe River.

Book your Chobe River safari today and embark on an extraordinary photographic adventure that will exceed your wildest expectations. Immerse yourself in the raw beauty of nature, capture breathtaking images, and create unforgettable memories in the heart of the Chobe wilderness.



Where You Will Stay

The brand new luxurious Pangolin Voyager houseboat offers a remarkable blend of comfort, luxury, and breathtaking views, providing an unforgettable experience on the Chobe River. With its well-appointed facilities, this floating sanctuary is designed to cater to the needs of discerning travellers and photography enthusiasts.

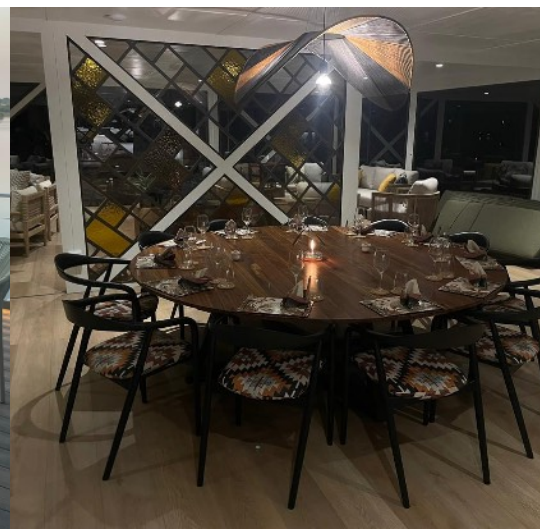
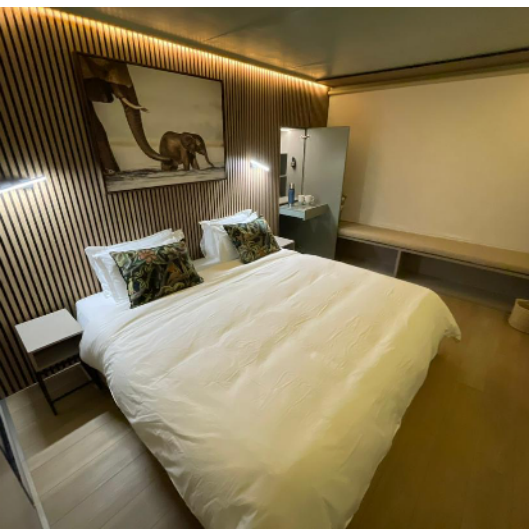
The middle deck of the Pangolin Voyager features two private lounges, creating intimate spaces for relaxation and unwinding. Here, you can immerse yourself in the tranquil ambiance while enjoying panoramic vistas of the meandering Chobe River and the surrounding African Wilderness. The communal dining area on this deck allows for shared meals and lively conversations, fostering a sense of camaraderie among fellow guests.

For nature lovers and bird enthusiasts, the top deck of the houseboat is a true paradise. Offering sweeping views of the river and its banks, this elevated vantage point provides an ideal setting for observing wildlife and capturing stunning photographs. You can choose to relax in the comfortable seating area, bask in the warm sun on the loungers, or explore the reference library to expand your knowledge of the region's rich biodiversity.

As the sun sets, a captivating spectacle awaits you on the Pangolin Voyager. The night sky reveals a tapestry of stars, twinkling brightly against the backdrop of the African wilderness. This enchanting setting offers an opportunity to stargaze and learn about the constellations, immersing yourself in the wonders of the universe.

Throughout your stay, the Pangolin Voyager ensures your comfort with air-conditioned en-suite rooms, providing a peaceful retreat after a day of exhilarating adventures. The attentive crew and friendly staff are dedicated to creating a warm and welcoming atmosphere, ensuring that every aspect of your stay is enjoyable and memorable.

With its unparalleled facilities and idyllic location, the Pangolin Voyager houseboat allows you to embrace the beauty of nature while indulging in luxury and convenience. Whether you are capturing remarkable wildlife photographs, savouring delicious meals, or simply relaxing on deck, the Pangolin Voyager promises an extraordinary experience on the Chobe River.



Dates | Costs | Prices

Dates	Cost	Spaces	Nights
2025-12-02 to 2025-12-06	\$ 2200 pps	5 Rooms	4
2025-12-06 to 2025-12-10	\$ 2200 pps	5 Rooms	4
2025-12-10 to 2025-12-14	\$ 2200 pps	5 Rooms	4
2026-02-04 to 2026-02-08	\$ 2200 pps	5 Rooms	4
2026-02-08 to 2026-02-12	\$ 2200 pps	5 Rooms	4
2026-02-12 to 2026-02-16	\$ 2200 pps	5 Rooms	4

Cost:

Our safari experience is priced at R 2200 per person sharing.

Please note that this tour has a room rate, thus there are only 2 single room available.

Please note that any bank charges incurred during the payment process are not covered by Tusk Photo. We kindly request the full amount indicated on the invoice, including any fees imposed by Paypal if you choose to use this payment method.

Deposit:

To secure your reservation, a 50% deposit of the full price is required within 14 days of making your booking. Once we receive your deposit, your booking will be confirmed. Please make sure to complete this step within the given timeframe to secure your spot.

Balance:

The remaining balance is due at least 9 weeks prior to the safari. If you are making a booking within 9 weeks of the safari, the full price will be payable at the time of booking.

Cancellation Policy:

We understand that plans can change, and in the event of a cancellation, the following fees will apply unless Tusk Photo is able to fill your safari space:

- Cancellation more than 120 days prior to departure: 10% of the full price
- Cancellation 90 - 119 days prior to departure: 40% of the full price
- Cancellation 60 - 89 days prior to departure: 70% of the full price
- Cancellation less than 60 days prior to departure: 100% of the full price

Please note: Your travel plans are made entirely at your own risk, and Tusk Photo cannot be held responsible for any flight cancellations, disruptions, or delays that may occur. We recommend considering travel insurance to protect your investment and provide peace of mind.

Itinerary

DAY 1 - ARRIVAL AND TRANSFER TO PANGOLIN VOYAGER

- Arrive at Kasane and transfer to Chobe Emigrations
- Proceed to Namibian emigration offices by boat
- Settle into the Pangolin Voyager houseboat
- First excursion
- Dinner

DAYS 2-4 - DAILY EXCURSIONS AND ACTIVITIES

- Wake up at 05:30 and enjoy a light continental breakfast
- Embark on morning game viewing and photography with your private guide
- Return to the boat around 10:30 for brunch
- Spend time with your photographic host for tutorials and images discussions
- Relax on board
- Tea time at 16:00
- Embark on afternoon game viewing and photography with your private guide
- Indulge in sundowners and snacks during the excursion
- Return to Pangolin Voyager for pre-dinner drinks
- Dinner

DAY 5 - FINAL EXCURSION AND FAREWELLS

- Embark on morning game viewing and photography with your private guide
- Return to boat
- End of tour



What You Get

INCLUDED:

- Services of Tusk Photo hosts
- All meals, teas & coffees
- Local beers, wines, and soft drinks
- 4 nights' accommodation
- All activities
- Use of dedicated Photographic boat
- Transfers from Kasane Airport to the House Boat
- Secure parking in Kasane, Botswana for the duration of the safari (For self-drive guests)

EXCLUDED:

- Visas
- Telephone calls
- Gratuities
- Purchases of a personal nature
- Travel costs to Kasane either driving or International flights
- Cross-border Transfers

Flights and Transport

For travelers flying into Kasane from OR Tambo International SA, we recommend booking online with SA Airlink at www.flyairlink.com/botswana or Botswana Air at www.airbotswana.co.bw. SA Airlink has minimal delays and rescheduled flights. Alternatively, there are daily flights available to and from Vic Falls and Livingston, which are 80km from Kasane. Please note that road transfers from these airports to Kasane will cost approximately USD 150 per person and take around 2 hours, depending on border crossings.

Return airfare ranges from R5000 to R8000, depending on the airline. Domestic departures require check-in one hour prior, while international departures require check-in two hours prior. The flight duration from JHB to Kasane is approximately 2 hours.

Upon arrival, transfer arrangements to Kasane immigrations from the airport(s) will be made. Transfers from Livingston/Vic Falls can also be arranged for approximately USD 150 per person round trip, or guests can take a taxi, subject to availability.

For travelers driving to Kasane, secure parking is available at the Pangolin Hotel for the duration of the safari. Please confirm parking arrangements with Tusk Photo closer to the departure date.

Remember to carry all necessary documents such as cross-border letters from your bank and insurance companies. Note that not all insurances cover travel into Botswana or the recovery of a vehicle back to SA.

Boarding and parking time will be from 13:30.



Photography and Gear

It is not advisable to take photographs of border posts or military/ police posts. Doing so can lead to an unpleasant situation and even arrest. Always ask permission before taking a photograph of the any local African residents; it is a sign of respect. In most cases a small payment is expected. However some cultures believe that the camera steals their soul and we request that you respect and understand their beliefs.

It is advisable to bring the following camera equipment:

- 2x Camera bodies (a backup will mean peace of mind)
- Spare memory cards and batteries
- Long telephoto lens 400mm to 600mm
- Medium telephoto lens 70-200mm or equivalent
- Wide angle lens(es) for landscapes
- Flash (optional)
- Notebook or additional storage device

Please remember that it is very likely that you could possibly photograph thousands of images over the period. We therefore strongly advise you to have sufficient storage and battery arrangements in place. If you are unsure of anything please contact us for more details



Tour Info

INSURANCE

- **Travel Insurance:**

While it is highly unlikely, there is a possibility of scheduled flights in and out of your destination being delayed due to unforeseen circumstances. To provide peace of mind and cover any potential flight disruptions or missed connections, we strongly recommend purchasing additional travel insurance.

- **Medical Insurance:**

For your safety and well-being, we highly recommend having medical insurance that covers unforeseen medical emergencies and evacuation. Please let us know in your booking form whether you have taken out any medical insurance for this safari.

- **Vehicle Insurance:**

Customers that are traveling by vehicle need to make arrangements with their insurance companies to take their vehicles across border. Additional insurance might be needed as some insurance companies do not cover travel in Botswana - especially breakdowns in Botswana. Recovery of a vehicle is in most cases for the owners account. Please confirm all details with your relevant insurance company.

PASSPORTS AND CUSTOMS

- Passports are required by all foreign visitors and must be valid for 6 months after the intended length of stay. Please ensure that there are two blank pages per country to be visited.
- South African citizens require no visas to enter Botswana.
- If driving to Kasane from South Africa you will need to pay additional road taxes and insurance. This can only be paid in Pula and should cost around P150 depending on vehicle and trailers etc.
- If driving to Botswana remember your vehicle, insurance and bank cross-border documentation.
- It is advisable to declare any cameras, lenses, laptops and other valuable items when leaving South Africa. We normally recommend keeping a detailed list of all items including serial numbers and descriptions. This makes the customs process that much quicker as all that is generally required is for the customs official to stamp the document.

MONEY AND CURRENCY

- The currencies accepted in Botswana are Botswana Pula (BWP), US Dollars (USD) and South African Rands (ZAR). ZAR and USD will need to be exchanged in some instances at local rates.
- Banks and foreign exchange bureaux are available at all international airports and in all main towns.
- Credit card payments can be processed at the camps.
- US dollars are widely accepted; however, notes dated before 2003 are no longer accepted. Also, high denomination notes may not be accepted.
- The Botswana Pula does fluctuate against the ZAR: Rates are generally 1.1 to 1.35 to the BWP.

HEALTH

- The Chobe region is a low risk Malaria area.
- Please consult your physician before you travel for advice on precautions against malaria.
- Should you require additional advice, we suggest you contact your local travel clinic in South Africa for consultations regarding Malaria and the Immunizations required for travel to Botswana. A complete list of Netcare Travel Clinics is available on www.travelclinic.co.za

LANGUAGES

- Although a lot of the locals speak Tswana or Kalanga, English is the national language of Botswana.

DIETARY REQUIREMENTS

We understand the importance of accommodating diverse dietary needs, and our team is dedicated to ensuring that we can cater to most dietary requirements. Please provide us with any specific dietary needs in your booking form.

POWER AND ELECTRICITY

220v battery power (charged by the generator) is used for lighting and air-conditioning in guest tents 24hrs a day.
220v plugs available in each tent for the charging of batteries only. Hence bring spare battery, charging unit and adaptors.



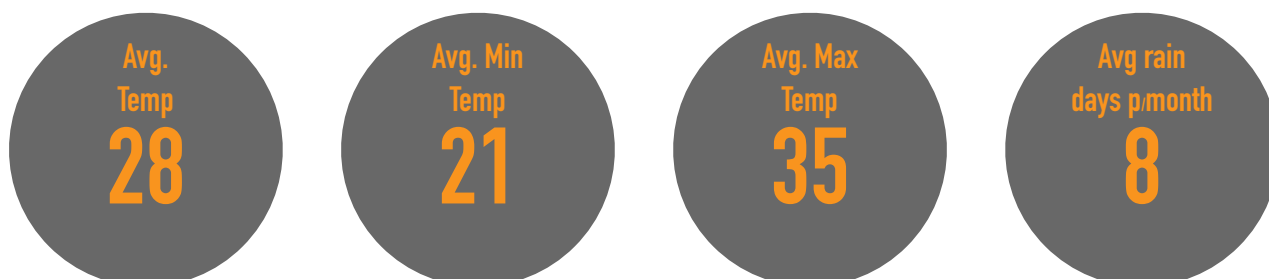
CLIMATE

Botswana experiences a warm to hot climate throughout the year. The country's temperatures range from a mean monthly maximum of 29.5°C to 35°C in summer, and 19.8°C to 28.9°C in winter. Summer nights are generally mild, with mean monthly minimum temperatures ranging from 14.6°C to 20.8°C. In winter, nights can be cooler, with temperatures ranging from 2.9°C to 11.6°C.

Rainfall patterns in Botswana exhibit significant regional variation. The northeastern part of the country receives the highest precipitation, with over 650 mm of rainfall annually.

The majority of the rainfall occurs between October and April, which corresponds to Botswana's summer months. Rainfall is typically in the form of localized showers or thunderstorms.

In summary, Botswana's climate is characterized by warm to hot temperatures and a distinct rainy season. The country experiences higher temperatures and greater rainfall in the summer months, whereas winter brings relatively cooler temperatures.



CLOTHING AND WHAT TO PACK

For a memorable safari experience, we suggest opting for comfortable, casual wash-and-wear attire. To enhance your game-viewing experience, it is advisable to choose muted colors. Keep in mind that game-drives are typically conducted during the early morning and late afternoon, which can be quite cold, particularly in winter.

To ensure you are well-prepared, we recommend packing the following practical items for your safari:

- Khaki, green, beige and neutral colours
- Shirts with long sleeves (even in summer, as protection from the sun and mosquitoes)
- T shirts
- Shorts or a light skirt
- Jeans or safari trousers for evenings and cooler days
- A jacket, fleece or sweater is recommended for early morning and evening game drives
- Comfortable walking shoes and/or sandals
- Sun block, sunglasses, hat, insect repellent, moisturiser and lip-balm are all essentials

GRATUITIES

Please note that the following gratuity amounts are provided as a minimum guideline, and you are welcome to increase them if you wish:

- Ranger / Guide USD 25 per person per day
- Camp staff USD 10 per person per day

CONNECTIVITY & EMERGENCY CONTACT DETAILS

There is Cellular and Data connectivity in Kasane. Although there are areas where signal strength may be a problem. Please ensure you have roaming activated on your phone should you wish to use your cellular phone while on safari.

Pangolin Photo
Tel: +27 82 877 4252

Tusk Photo PTA Office
Tel: +27 12 761 3737



Indemnity

Tusk Photo and its staff prioritise your safety and wellbeing during your safari; however, please be aware that we cannot accept liability for any incidents, including but not limited to accidents, loss, or property damage. By completing the Safari Booking form, you acknowledge the inherent risks associated with travel and agree to indemnify Tusk Photo against any claims or liabilities that may arise.

While this document provides comprehensive information, it is not exhaustive. If you have any additional questions or concerns, please feel free to contact our office. Please note that the information contained herein is correct at the time of compilation to the best of our knowledge.



We Are Excited To Host You on Your Dream Photographic Safari!

