



FASTER / SMARTER / GREENER

Nexii Panel Finishes

2024



Contents

1) Overview	03
Introduction	04
Textures	05
Coatings	06
2) Finishes	07
Panel Type Lengend	08
Wood Finishes.....	08
Brick & Stone Finishes	10
Pattern Finishes	10
3) Potential Additional Finishes	11
Pattern Finishes	12
Rough Finishes.....	13
Brick Finishes	14
Vertical Finishes.....	15
Wood Finishes.....	16
4) Finish Levels	17
Interior Surface.....	18
Exterior Surface.....	19
Exterior Paint	20
Specialty Finishes.....	21
Post-Applied Finishes	22
Finishes Example.....	23



NEXII

Overview



Introduction

The Nexii finishing system incorporates cast-in surface textures and factory-applied coatings to provide a durable, low-maintenance solution for the exterior of the building. By combining architectural reveal patterns, formliners, and a virtually limitless range of color options, the Nexii system can emulate an ever-increasing range of traditional cladding materials and eliminate the cost, waste, and coordination of site-installed products.

For the interior faces, our panels can be rendered smooth to receive paint for a finished application or can be left unfinished in an industrial setting. We recommend adding a furred wall for a smooth drywall finish aesthetic.

We offer a wide variety of finish options that do not contain substances listed on the International Living Future Institute (ILFI)'s Living Building Challenge (LBC) Red List material Watch and Active lists at concentrations $>/1000$ ppm.



Textures

A variety of simple and complex surface textures can be cast directly into the exterior face of a Nexii panel to capture the qualities and appearances of conventional cladding assemblies like brick, paneling, or stucco. Reveal patterns can be incorporated during manufacturing to satisfy a wide range of architectural expressions.

When working with the panelized Nexii system, texture and pattern should be coordinated with the panel joints as well as with the dimensions and modular layout. Simple, regular patterns will be more effective; intricate textures and complexity will add to the overall cost.

Recent projects have incorporated products from US Formliners. Please contact Nexii for custom options outside our standard catalog.



Coatings

The Nexii system uses a three-part coating process consisting of a flexible primer and topcoat. The system can be tinted to match virtually any sampled color. In general, Nexii recommends lighter tones to reduce solar heat gain. The topcoat is comprised of an elastomeric coating that provides both durability and an attractive visual finish.

NEXII

Finishes

Panel Type Lengend



Basic

- Flat cast panels



Standard

- Select standard panel finishes
- Panels including reveals



Custom

- Select custom panel finishes

Wood Finishes



2/20 AHR

Standard

A wood pattern with evenly rowed boards. The pattern is reminiscent of vinyl with its very smooth surface.



2/35 Alster N (Butted Joint Boards)

Standard

A vertically running wood pattern with robust grains. The boards are evenly rowed with inconspicuous joints and are 6.3"-7" wide.



2/35 Alster N

Standard

A vertically running wood pattern with robust grains. The boards are evenly rowed with inconspicuous joints.

Wood Finishes



2/163 Fraser

Standard

A horizontally running wood pattern with irregularly joining boards. The front- and back-lying elements enliven the façade.



2/24 Donau

Standard

A vertically running wood pattern with evident grains and prominent tree-rings. The relief-like pattern creates a clear color shading.



2/22 Altmühl

Standard

A vertically running wood pattern with light grains and fine knotholes.



2/31 Iller

Standard

A vertically running wood pattern. Narrow, varying long branches lend a bamboo look to the façade.

Brick & Stone Finishes



2/219 Mersey

Standard

A brickwork pattern with differently-sized rock in offset, horizontal and vertical arrangement.



2/99 Salzach

Standard

A horizontally running brickwork pattern in an elegant brick look. Bricks are set in an offset pattern and are separated by 0.39" joints.

Pattern Finishes



2/37 Lenne

Standard

Abstract pattern with a linear texture and discreet, irregular arrangement. Coarse, varyingly wide grooves as if drawn with a squeegee.

NEXII

Potential Additional Finishes

Pattern Finishes

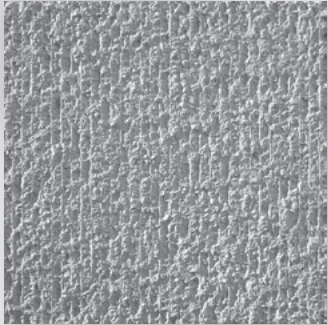


2 /185 Simmental

Standard

The pattern resembles elephant skin: slanted and diagonally running lines form a creased surface.

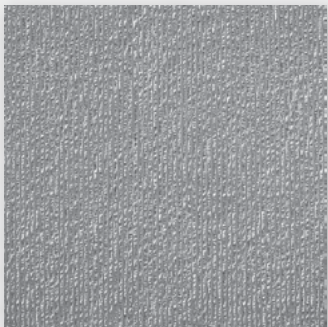
Rough Finishes



2 /107 B Mekong

Standard

Ribs with a rough fractured pattern. The light elevations are reminiscent of a plowed field.



2 /108 B Indus

Standard

Vertically running ribs with a rough fractured pattern. Separated by u-shaped joints with a diameter of 0.39".

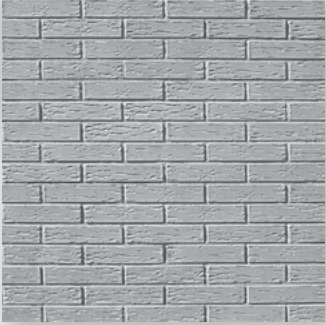


2 /106 B Amur

Standard

Ribs with a coarsely fractured pattern, separated by smooth elevations and with a width of 0.39".

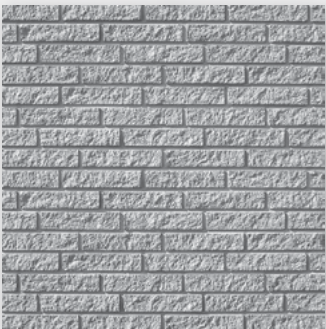
Brick Finishes



2/40 Moehne

Standard

A horizontally running brickwork pattern with offset placed rocks in a brick look and roughened surface.



2/70 Po

Standard

A horizontally running brickwork pattern with offset placed rocks in a brick look. The uneven surface is reminiscent of sandstone.



2/312 Engadin

Standard

A brickwork pattern with differently-sized, square bricks. The systematically vertical and horizontal arrangement loosens up the façade, the chipped surface appears natural.

Vertical Finishes



2 /212 Tyra

Standard

An abstract pattern with horizontally arranged, elongated rectangles which jump forward and back to create a vivid effect. The height of the sticks is variable.



2 /195 Gysenberg

Standard

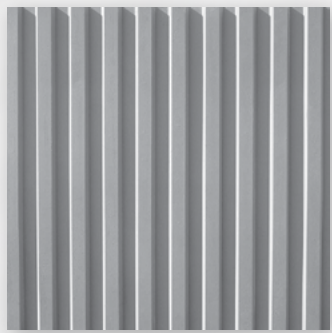
An abstract pattern with horizontally arranged, elongated rectangles. The little sticks jump forward and back to create a vivid effect.



1 /245 Nevada

Standard

A clear ribbed texture similar to 1/173 Thur. The vertical ribs feature different positions, widths and depths between 10 and 20 millimeters.

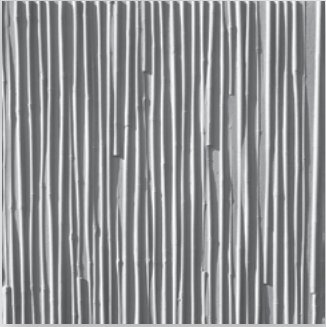


1 /31 Rib Type C

Standard

A clear and smooth wave pattern with vertically aligned ribs, separated by 1.57" wide joints.

Wood Finishes



2/48 Ruhr

Standard

A vertically running wood pattern with varying long and wide branches, that in part connect and merge.



2/73 Tisa

Standard

A vertically running wood pattern with a curved, clearly prominent grains without visible joint.



2/25 Eder

Standard

A vertically running wood pattern with irregularly wide, adjacently rowed boards. The smooth surface creates the look of a wooden wall.



1 /331 Etampes

Standard

A wood pattern with slightly tilted, equally wide boards. The horizontal alignment is reminiscent of a Swedish log home.

NEXII

Finish Levels

Interior Surface

Standard Interior

- As cast finish of Nexiite coming off the bed or form
 - Only major manufacturing defects are fixed
 - Voids where Nexiite did not flow properly
 - Chunks that stuck to bed and broke off.
 - Edges of panels are lightly ground to deburr Nexiite
 - No mesh showing
 - Maximum $\pm 9\text{mm}$ ($3/8''$) from plane
-

High Level Interior

All items from Standard Interior level as well as:

- Additional steps of filling bug hole larger than 2mm non sanded
- Grout
- Over 6 feet no more than 3mm ($1/8''$) (smooth transition)
- Filling dimples deeper than 3mm ($1/8''$)

**If a perfectly smooth design is desired with no panel reveals, it is recommended that a furring wall be installed to achieve a Level 4-5 drywall finish.*

Exterior Surface

Standard Exterior

- As-cast finish of Nexiite coming off the bed or form
 - Only major manufacturing defect are fixed
 - Edges of panels are lightly sanded to deburr Nexiite
 - Expect minor defects on reveals and textures such as chipped edges on reveals
 - No imperfections greater than W1"xL1"
 - No more than 5 'standard imperfections' over 100 sqft area
 - No imperfections more than 1/4" deep
 - Flat cast panel seam-imperfections are ground-down
-

High Level Exterior

All items from Standard Exterior level as well as:

- No imperfections over 1/4"x1/4"
- No bug-holes over 2mm (non-sanded grout)
- No dimples deeper than 1/16" on flat sections

Exterior Paint

Exterior Level 1

- Exterior finishing system including 1 color

Exterior Level 2

- Exterior finishing system including 2 colors

Exterior Level 3 - Complex Color

special painting requirements such as:

- Brick pattern: separate colors for brick and grout
- Two colors not using a straight delineation

Color Options

Color is a great way to highlight the design on Nexii panels. We can match a specific color using color swatches from other suppliers or by using a Pantone color code. We limit darker colors to minimize the impacts of heat gains from solar exposure. Nexii's range is 20 - 100 LRV (light reflective value) established by EIFS Standards.

0 = Black / 100 = White

Specifying Your Project

When specifying a finish level for Nexii panels, selections are confirmed by sample signoff at the Reservation Stage to secure pricing and are locked in at the Contract Stage. Turnaround time for pricing within our baseline finishes is typically 2-3 business days. Our R&D and Client Experience teams will confirm selections outside of this range.

Note: Any changes to finish selections post signature and agreement may incur additional costs and time. Specific changes are to be negotiated with our Project Management team.



Specialty Finishes

Finishes we have produced for projects to date have all run through our R&D process. We can also produce custom finishes to suit your brand or project requirements as long as they fit within the general parameters of overall texture complexity and reveal depth. If your goals are not captured within this guide, we will run a separate process to validate that we can achieve the desired results that fit our manufactured process, the project's technical requirements, and budget.

Post-Applied Finishes

While Nexii's goal is to fully consolidate the wall assembly into a single, manufactured product, the system can also act as a substrate for conventional cladding assemblies. ACM panel systems, for example, can be attached to the panels as they would be to a typical stud-frame wall. Please contact a Nexii representative for more information.

Finishes Example

Popeyes Drive-Thru Restaurant

Abbotsford, B.C.

- Commercial Retail Unit
- 2,662 SF
- Completed in 2021



Monochrome Brick
Color: Dark Grey



Monochrome Reveals
Color: White



NEXII

Additional Information

For more information on how Nexii can benefit your building program, please visit:

www.nexii.com

Questions

For questions, please email:

inquiries@nexii.com

Location

Our office address is:

[3400 Carlisle St, Suite #550,](#)
[Dallas, TX 75204](#)

FASTER

SMARTER

GREENER

