

# LIGHT & dark



With a dramatic exterior, this semi-detached terrace has an interior that tells a different and equally compelling story

**WORDS** CARROL BAKER **PHOTOGRAPHY** TOM FERGUSON

This architecturally designed home is made up of a series of stylish public and private spaces to accommodate a young family and visiting in-laws







## WE LOVE

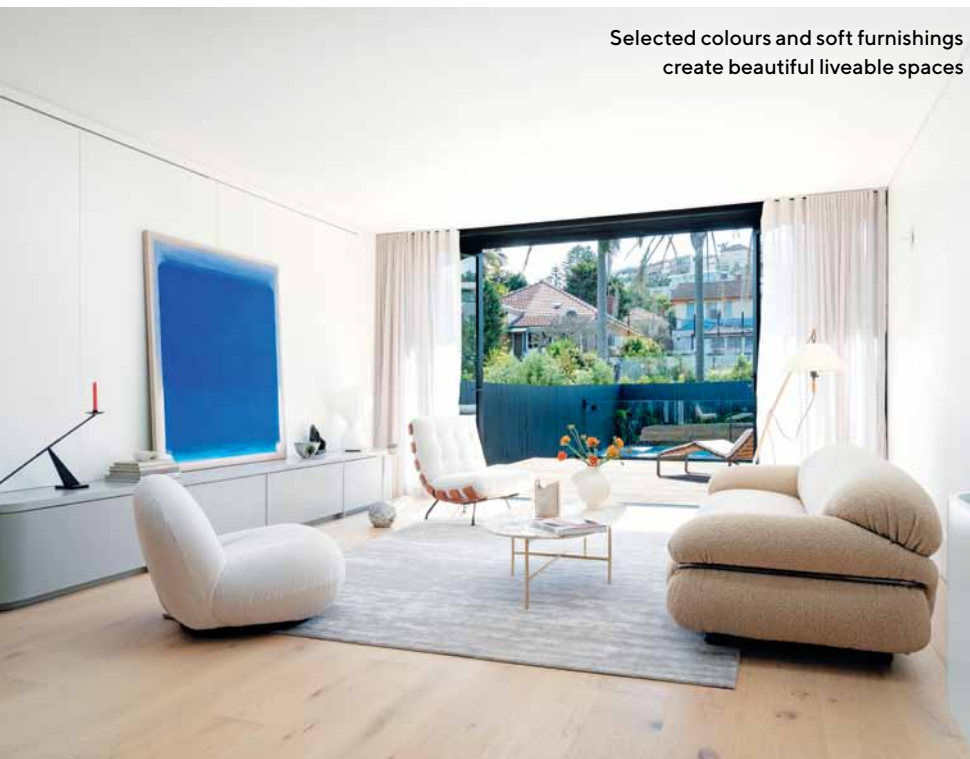
THE PLAY OF WARMTH, LIGHT AND SHADOW THAT THE STUNNING OPENING ABOVE THE STAIRWELL PROVIDES

The inside-outside story is curious. Outside it's dark and broody, while inside the home is calm and welcoming, with soft muted tones and sweeping curves that soften the interior spaces.

Before the renovation, the home was a cramped single-storey dwelling that was bereft of light and offered insufficient space for the family who live there. Bronwyn Litera from LiteraTrotta says they were approached by the homeowners who had seen their work in utilising limited space, as well as introducing light and bright interiors into characteristically dark homes.

One of the key challenges of the project was indeed introducing more light. "Given the nature of a long and skinny semi-detached residence, the ultimate goal was to make the spaces feel bright and spacious," says Bronwyn. This meant creating open-plan areas, including concealed pocket sliding doors between rooms, and looking for opportunities to allow natural light to flow in. "Upstairs, the lofty pitched ceilings add a little drama and grandeur, but key for us was that rooms still feel intimate and homely," says Bronwyn.

Selected colours and soft furnishings create beautiful liveable spaces



**DETAILS**  
**HOUSE** Semibold  
**LOCATION** North Bondi, NSW  
**DATE COMMENCED** September 2021  
**DATE COMPLETED** September 2022





With reimagined living zones and an additional storey, the spacious open-plan home offers comfort and plenty of room for the couple who live there. Both run their own businesses and have two primary school-aged children. They also wanted to accommodate flexible spaces for the in-laws to stay.

The new renovation has turned chaos into calm, with a laundry that can transform into a butler's pantry and enough storage to hide everything a family could possibly accumulate. "There's a playful plunge pool for kids' bombing or adults sipping champagne," says Christopher Trotta from LiteraTrotta, "and a luxurious open-plan kitchen, living, dining and deck area for daily life and entertaining."

The downstairs rooms were reconfigured to accommodate generous living spaces and a study, a new entry foyer and staircase. The new upper level contains a master suite to the rear with juliet balcony, walk-in robe and ensuite, and two large kids' bedrooms to the front with a shared bathroom. To increase the sense of connectedness to the outdoors, and to make entertaining a breeze, generous bifold doors to the north between the extended living room and the new deck were fitted.

Bronwyn says to boost light in the interiors, a sharp angle was cut into the long side of the upper level to allow for a new windows and skylight above the kitchen. "The shape also allowed for a large north-facing window to the master ensuite, bringing a little extra luxury upstairs," she explains.



**EDITOR'S FAVOURITE**  
THE CONTEMPORARY DARKER TONES OF  
THE KITCHEN THAT COMPLEMENT THE  
LIGHTER INTERIOR PALETTE



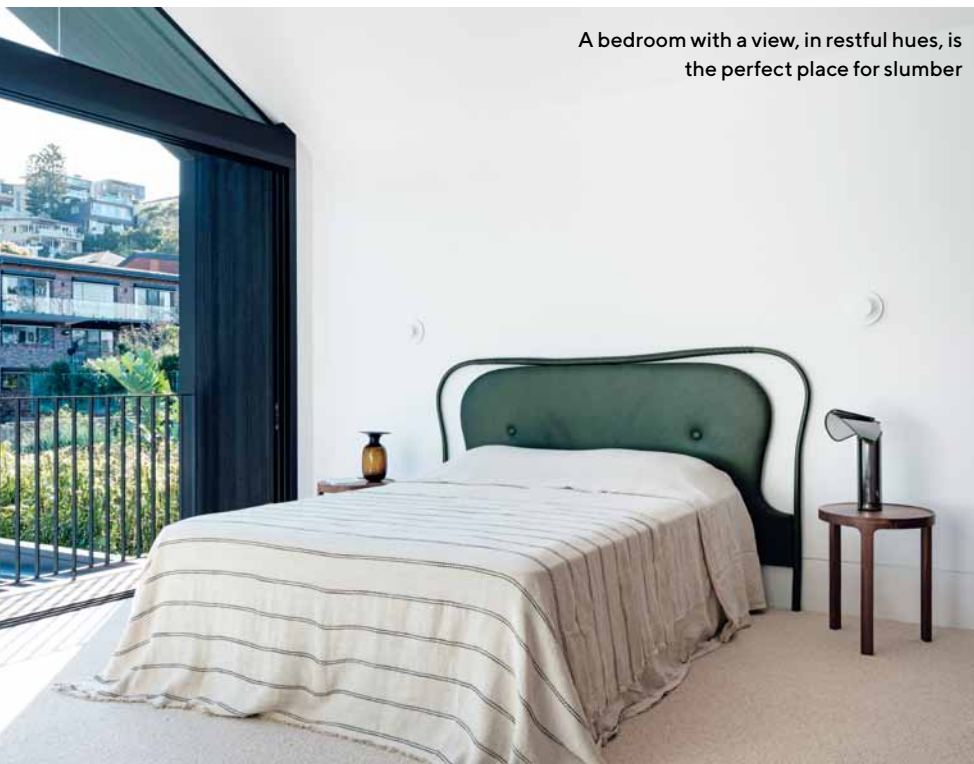
The kitchen, in muted greys with timber flooring, offers a calming ambience



The mood inside is light and warm, with contemporary undertones



A bedroom with a view, in restful hues, is the perfect place for slumber



With a dark and dramatic exterior, the internal palette was kept clean and light, with warm timber floorboards, fresh white walls, a beautiful grey kitchen and cool concrete benchtops. "Impossibly tall pitched ceilings to the upper level make the rooms feel exceptionally large and spacious," says Christopher. "Clever lighting keeps these ceilings completely clean of the usual ceiling clutter and as a result it's a little ethereal."

The statement staircase, a curved dramatic form that sweeps the eye upward, is a feature in the space with a commanding presence. Christopher says it made sense to use this double-height space to bring in as much light as possible to the centre of the ground floor to create scale and drama. "The biggest move, and the most dramatic space in the house, was created right at its centre where we fundamentally sliced the home in two by introducing a striking double-height window and skylight over the new entry and stair," he reveals.

This project was a successful collaboration between architects, builder and clients who worked harmoniously together. During the process, little changed from the original brief other than storage space was added in the existing roof and the pool was confirmed.

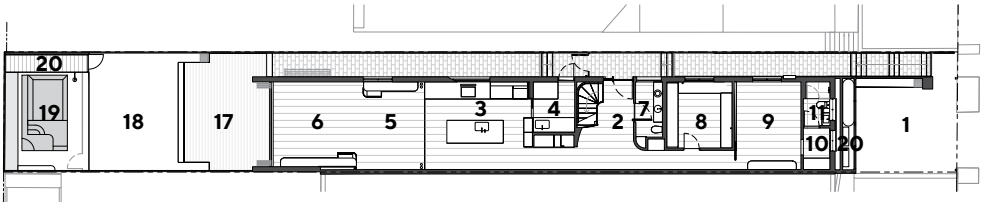
Selective openings, highly specified wall and roof insulation and a double-brick ground-floor-level rainwater and OSD tank all tick the boxes for sustainability. Wiring is also in place for PV and batteries as well as solar pool heating.

This visually spectacular project has turned architecture into a living artform. 🏡

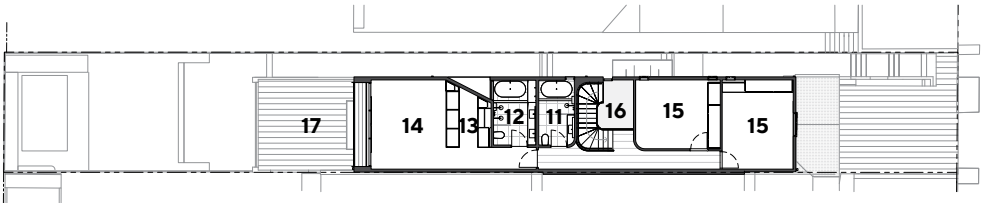




PROJECT  
SEMIBOLD



GROUND FLOOR PLAN



FIRST FLOOR PLAN

- LEGEND**
- 1 Existing carport
  - 2 Entry
  - 3 Kitchen
  - 4 Laundry/butler's pantry
  - 5 Dining
  - 6 Living
  - 7 Powder room
  - 8 Study
  - 9 Rumpus/guest room
  - 10 Store
  - 11 Bathroom
  - 12 Master ensuite
  - 13 Master robe
  - 14 Master bedroom
  - 15 Bedroom
  - 16 Void
  - 17 Deck
  - 18 Lawn
  - 19 Pool
  - 20 Store/plant



PROJECT TEAM

**ARCHITECT, DESIGNER, INTERIOR DESIGNER AND BUILDING DESIGNER** LiteraTrotta Architecture, [literatrotta.com](http://literatrotta.com)  
**BUILDER** Toki Construction, [tokiconstruction.com.au](http://tokiconstruction.com.au)

**FURNITURE & FURNISHINGS**  
**Orsola armchair** by Tacchini Stylecraft  
**Osso stool** by Mattiazzi District  
**Palermo Mist rug** The Rug Est.  
**Pacha armchair** by Gubi Luumo Design  
**Ink side table** Becker Minty  
**Clara bedhead** by Gemla Great Dane Furniture  
**Angel stool** by Mobel Copenhagen Fred International  
**Ribbon chaise** by David Harrison Robert Plumb  
**Soap coffee table** by Tacchini Stylecraft

The bold and striking exterior  
is a design innovation