

ST.JEROME'S

**LANEWAY**

**festival '26**

**AUCKLAND**

**FESTIVAL GUIDE**

**Are you new to Laneway Festival or festivals in general?**

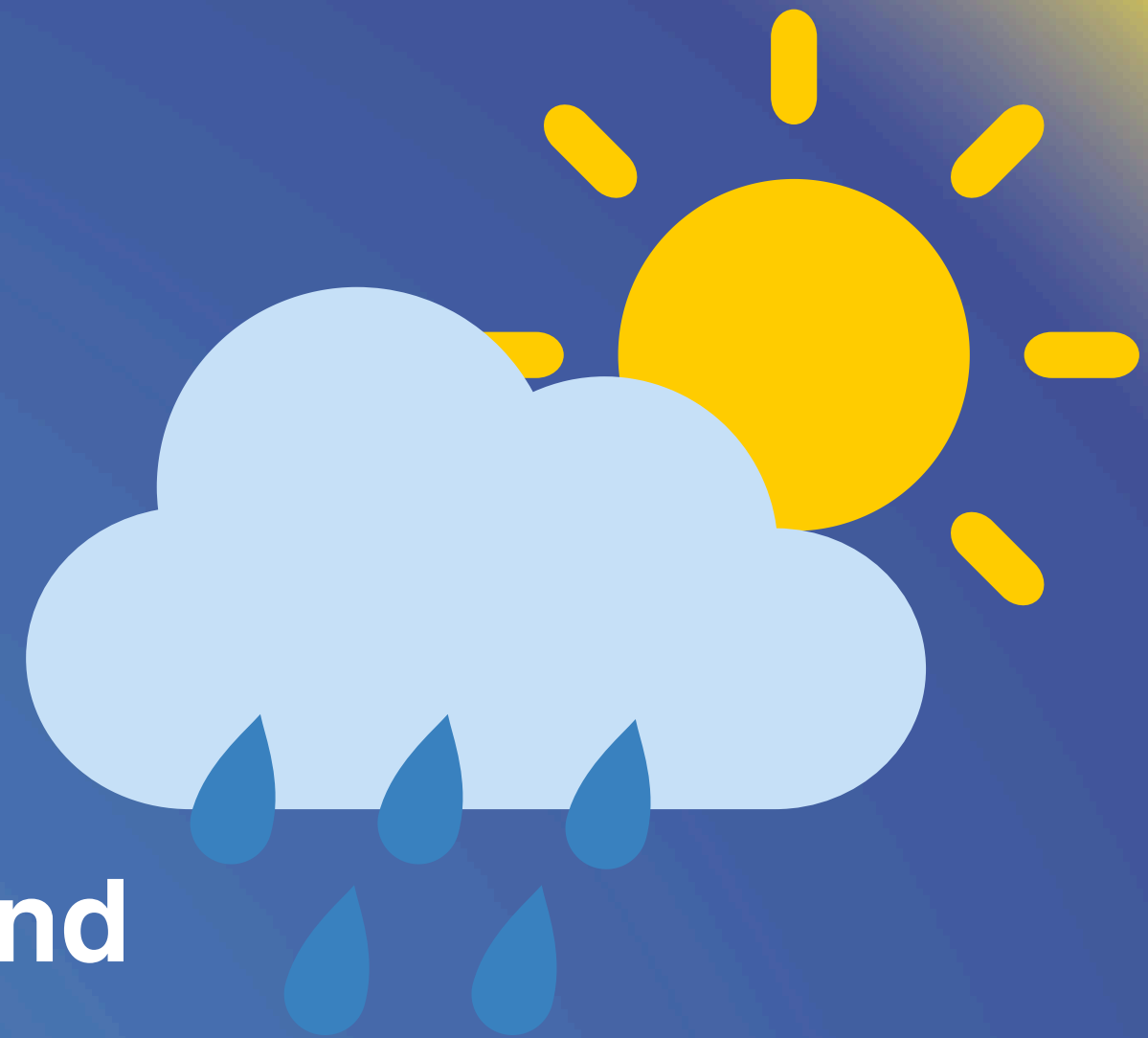
**This festival guide is designed to give you everything you need to know in order to have a safe and fun day at Laneway Festival!**

# BEFORE THE EVENT

Check the weather on the day and make sure you dress to suit (hat, sunglasses, raincoat, comfortable shoes etc.)

Make sure you plan your trip getting in and out of the festival.

Important: if you show up to the event intoxicated, you will not be allowed to enter



# HOW TO GET TO LANEWAY

**Main entry is via Stadium Road, at the corner of Great North Road.**

**Public transport:** Travel using Auckland Transport buses along Great North Road or trains via Morningside Station; plan ahead with AT Journey Planner.

**Rideshare/taxis:** Easy access from Auckland City, with dedicated P5 drop-off and pick-up points on event days.

**Walking:** The venue is within walking distance of Ponsonby, Grey Lynn, Westmere, Morningside and Western Springs.

**Cycling:** A Locky Dock is located on Stadium Road near the entrance.

**Parking:** No festival parking; nearby parking is very limited and restrictions apply.

**Post-event shuttles:** Buses run to Auckland CBD from 9.30pm. Tickets are available [here](#).

# WHAT I NEED TO ENTER LANEWAY

Required for festival entry:

- ✓ A valid ticket (saved to your digital wallet or have it in the Ticketek app on your phone)
- ✓ Valid Photo ID - check ID Requirements on our website for accepted forms of ID





# RECOMMENDED ITEMS TO BRING

- ✓ Empty *soft* water bottle - there are lots of water refill stations located on the site so you can stay hydrated
- ✓ Hat, sunglasses, sunscreen - be sun smart!
- ✓ Credit/debit card/phone wallet - we're cashless!




# ACCESSIBILITY - FORM

You can fill out our Accessibility Request Form so we can understand your access needs and provide the best possible support.

Once submitted, a team member will reach out to confirm details and answer any questions.

Please complete this form at least 1 week before the event in order to accommodate your needs.

A colorful banner for the Laneway Festival '26. It features the text "ST. JEROME'S LANEWAY festival '26" in a stylized font. The background is a vibrant, abstract design with various colors and patterns, including what looks like a map of New Zealand and some festival-related icons.

**SJLF26 | NZ Accessibility request form**

We're excited to have you join us at Laneway Festival Auckland 2026! To make sure your time with us is safe and fun, please use this form to tell us about your accessible needs, and any dedicated facilities/services you might require.

While we'll do everything possible to accommodate your requests, some limitations may arise due to venue constraints, compliance, or capacity. We appreciate your understanding and look forward to making your time with us great!

**Your privacy matters to Us:** We are collecting your sensitive information (health and disability details) for the **sole purpose** of assessing your needs and providing accessibility support for your request.

- **We keep your information secure and confidential:** All information you provide will be handled with great care.
- **Who we disclose it to:** Your information will be accessed only by Laneway Festival **Accessibility Liaison Team**. It may be disclosed, on a need-to-know basis only, to on-site medical providers (if required), Ticketek staff (for Companion Card Processing) and key operational/security staff (such as for accessible entry or item checks).
- We may also use your contact details to offer customised support and send you an **Access Information Pack** with details about our accessible facilities.
- **What happens if you don't provide it:** Providing this information is **voluntary**, but if you choose not to share this information with us, we may not be able to provide you the best assistance for your access requirements.
- You can learn more about how we handle your information, including how to access it, correct it, or make a complaint, in our [Privacy Policy](#).



# ACCESSIBILITY - INFO

## ACCESSIBILITY DROP OFF/ PARKING

Our dedicated accessibility carpark is located next to Caltex on Great North Rd (820 Great North Rd).

Please use the P5 location further up Great North Rd towards Grey Lynn shops for drop off and pick-up.

If you need to request access to this, please fill in our [Accessibility Request Form](#).

## ACCESSIBLE VIEWING PLATFORM

Laneway provides Accessible Viewing Decks and designated viewing areas for patrons with disability (including non-visible disability) and their companions. These spaces are designed to support people who need clearer sightlines and room for mobility aids.

As these areas are limited, if the deck reaches capacity, priority will be given to wheelchair and mobility-aid users and patrons who require access-supported viewing to participate fully in the event.

We really appreciate everyone's support in helping us keep these areas available for the people who rely on them most.



# **ACCESSIBILITY - LOW SENSORY SPACE**

**Our events are held in outdoor spaces and feature large crowds, loud noises, and are exposed to weather and uneven surfaces.**

**If you feel overwhelmed, or require additional support (but you don't require medical attention), please make your way to our low sensory space that is indicated on the patron map.**



# MAP



P.S. Download the festival app (iOS/Android) for easy access to the map on the day!

# **WHAT TO DO IF YOU NEED HELP**

**Laneway Festival believes everyone has the right to have fun, feel safe, and enjoy the music.**

**If you see anything or need assistance please alert our security, medical, or crowd care teams.**

**Within the Laneway Festival app we also have a Patron Safety Emergency feature - where we can provide you with support and connect you directly with our team.**



# FOOD/DRINK/WHAT TO DO ON SITE

We have lots of different food vendors and try our best to cater to all dietary needs.

We also have a variety of alcoholic and non-alcoholic drinks available at our bars.

Please bring an empty *soft* water bottle to fill up at our water stations and take lots of breaks in the shade.





# BEHAVIOUR

Treat each other kindly.

Don't rush or push people and try not to be a barrier hog!

Take breaks from the mosh to rest/ eat/ drink some water.

Antisocial behaviour will not be tolerated.





# HAVE FUN AT LANEWAY!



VISIT [LANEWAYFESTIVAL.COM/AUCKLAND](https://lanewayfestival.com/auckland) FOR MORE INFO