



2025 IMPACT REPORT

CELEBRATING 5 YEARS OF CULTIVATING CHANGE



OUR MISSION CONTINUES



L. WAYMOND JACKSON JR.
President, Ed Farm

Education won't evolve organically, it must be cultivated. Five years ago, this belief transformed Ed Farm from the spark of an idea of our founder and board chair, Anthony Oni, into a growing movement committed to preparing communities for a rapidly changing digital world. This movement recognized that technology is reshaping our world at unprecedented speed, that the digital future of work is here and many communities are ill-prepared, and that our education system remains misaligned and in need of bold new solutions. Today, Ed Farm stands as that solution.

Since our launch, we have expanded our footprint to serve learners throughout the Southeast and other parts of the United States. Our work continues to focus on empowering educators, students and the workforce, while also introducing new technologies into the learning ecosystem. More importantly, our work continues to evolve to meet and exceed the moment as evidenced in the recent announcement of the Alabama Digital Education Network (ADEN), a statewide initiative that will deepen our impact in communities across Alabama by expanding access to high quality digital learning and workforce opportunities.

It goes without saying, this work would not be possible without our extraordinary team whose dedication to providing digital education and professional development to educators and learners of all backgrounds, especially those who are traditionally overlooked in urban and rural area is unparalleled. As we work to increase access to and attainment of digital skills for all learners, we invite you to be active in our movement to create an inventive world where all people have access to the tools they need to fill or create the jobs of tomorrow.

Sincerely,

L. Waymond Jackson Jr.
President, Ed Farm

WHAT WE DO

OUR MISSION: Grow digitally fluent learners and cultivate change in communities.

OUR VISION: A world where *everyone* has equal access to the information, training, and support they need to fill or create the jobs of the future.

OUR WHY

THERE'S A DIGITAL SKILLS GAP BETWEEN TODAY'S CLASSROOMS & THE FUTURE OF WORK

90% OF JOBS WILL REQUIRE DIGITAL SKILLS BY 2030

25% OF 5TH-8TH GRADE STUDENTS ARE PROFICIENT IN DIGITAL SKILLS

Digital skills are synonymous with opportunity – but, there are educational gaps that hold some learners back. 90% of all jobs will require digital skills by 2030^[1]. Yet, a third of today's workforce are not prepared, a majority of 5th-8th grade students are non-proficient, and just 10% of teachers feel confident in incorporating tech skills into the classroom^[2] ^[3]. Closing these opportunity gaps requires a multi-pronged approach that empowers students, educators and adult learners to succeed in a rapidly evolving world.

Sources: [1]World Economic Forum [2]Learning.com Study [3]PWC

OUR SOLUTION

ED FARM IS THE DIGITAL EDUCATION PARTNER FOR COMMUNITIES

STUDENT PROGRAMS

Year-round programming that transforms K-12 students into digitally-fluent innovators.

EDUCATOR PROGRAMS

Future-focused professional development that empowers teachers to integrate technology into the classroom.

WORKFORCE PROGRAMS

Fellowships and workshops that prepare adult learners for tech opportunities and career growth.

LEARNING SPACES

School and community-based learning environments that expand creativity and innovation with industry-leading tech.

APPS & INNOVATION

Leading-edge learning platforms and apps that prepare students and educators for a digital future.





OUR JOURNEY

OFFERED AT LAUNCH:

- + Teacher Fellows
- + Student Fellows
- + Pathways to Tech (11-Week Course)

OFFERED TODAY:

- + Teacher Fellows
- + Student Fellows
- + Code Camps (iCan Camps)
- + Pathways to Tech (1-Year Fellowship)
- + Ed Farm Spaces
- + LEARN (Now ModivEdu)
- + Future of Learning Summit

LAUNCH (2020)	VS	TODAY (2025)
26	TEACHER FELLOWS	516
1,000	STUDENTS	5,088
1	PARTNER (S)	13
13	SCHOOLS SERVED	348



IMPACT BY LEARNER

At Ed Farm, we believe that true transformation comes from equipping learners with the digital skills and innovative mindsets necessary to lead in a tech-driven world. Through our programs—Student Fellows and Code Clubs for K-12 students, Teacher Fellows for K-12 educators, and Pathways to Tech for adult learners—we combine challenge-based learning with mentorship to spark curiosity, close skill gaps, and open doors to careers of the future.

K-12 STUDENTS

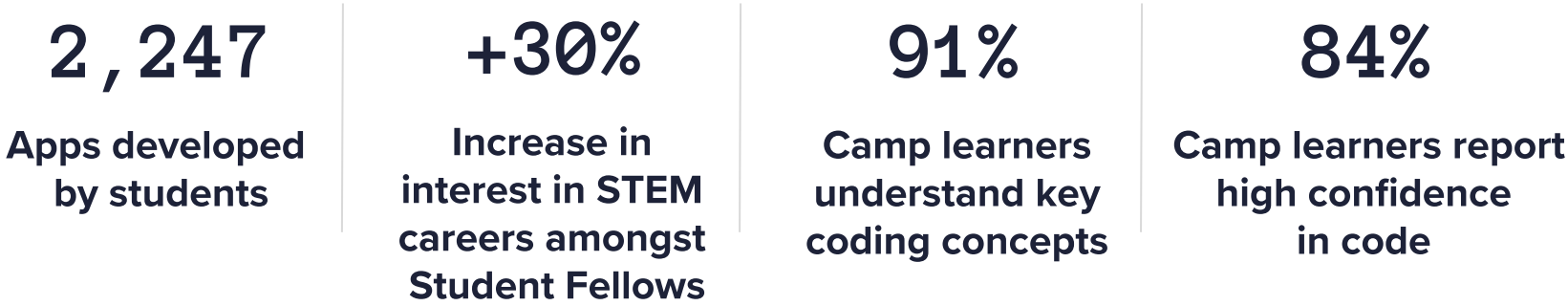
POWERING STUDENT LEARNING WITH TECH

Ed Farm’s student programs: Student Fellows and Code Camp – immerse young learners in hands-on projects, challenge-based learning, and one-on-one mentorship that cultivate both technical know-how and creative confidence. By guiding students to build apps, launch podcasts, and explore STEM pathways, we’re not just teaching code; we’re equipping the next generation with the tools and mindset to take on tomorrow’s challenges. Below, the numbers illustrate the breadth of our impact

STUDENTS SERVED



BY THE NUMBERS



Welcome to Planify - Your All in One Event Planner

What is Planify:

Planify is an app that can help you organize all your schedule's in one place. Planify helps you stay on track with all your event activities going on without an hassle.

The Problem:

The problem that Planify solves is deadlines, missed events, and overwhelming schedules.

LEARNER STORY

MACKENZIE WRIGHT

Student Fellow, Russellville Middle School

Through Student Fellow's Confident Coders Challenge, Mackenzie was introduced to Apple's Swift coding language, which she used to create Planify, an app that simplifies sports scheduling for her school district.

Her innovative prototype caught the attention of the Shoals Spark Innovation Competition – which encourages students to use their creativity and entrepreneurial spirit to improve their community – where she was selected as a finalist.

By empowering Mackenzie with the coding skills, creative problem-solving techniques, and the confidence to pursue her ideas, Ed Farm helped her take a concept from thought to prototype and create a tangible solution for her and her peers.

PROGRAMMING SPOTLIGHT

DESIGNING THE FUTURE OF MOBILITY WITH HYUNDAI

Hyundai Motor Manufacturing Alabama (HMMA) partnered with Ed Farm and Montgomery Public Schools to launch “Manufacturing the Future with Hyundai: Future of Mobility,” a forward-thinking curriculum integrated into the Student Fellows program.

This initiative exposes middle school students to robotics, sustainability, and emerging technology in the automotive industry. By applying STEM concepts and design thinking, students gain valuable insights into the industry, explore the future of mobility, and develop critical thinking skills by pitching their ideas to industry experts.

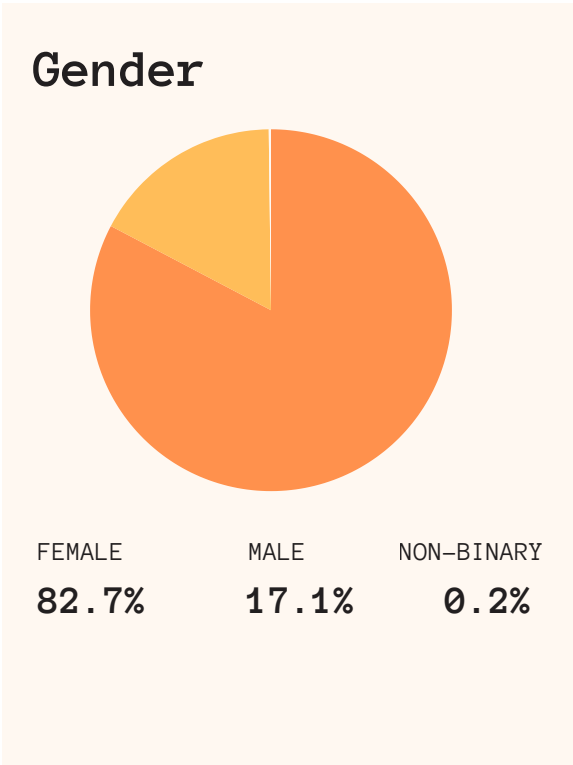
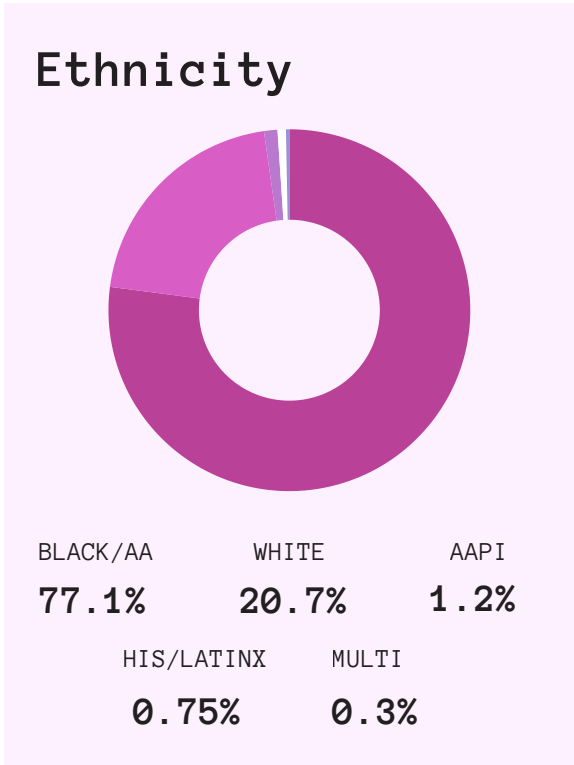


K-12 EDUCATORS

DEVELOPING DYNAMIC DIGITAL EDUCATORS

Educators play an essential role in preparing students for a digital future—yet only 1 in 10 feel equipped to teach tech skills. Ed Farm’s Teacher Fellows program is shifting that reality. This yearlong fellowship provides educators with 60+ hours of professional learning and personalized coaching focused on integrating computer science, creativity, and challenge-based learning into everyday instruction. After experiencing the Teacher Fellows program, educators are more confident, more equipped, and more inspired to design digitally-rich learning experiences that prepare students for a rapidly changing world.

EDUCATOR’S SERVED: 516 TEACHER FELLOWS



EDUCATOR STORY

NATALIE BULGER
Teacher Fellow
Robert Harvey Elementary School

For Natalie Bulger, teaching isn't just a profession—it's a calling grounded in creativity, leadership, and a deep belief in the power of joyful learning. A veteran educator in Dougherty County, Georgia with over a decade of experience, Natalie completed the Ed Farm Teacher Fellows program in 2024–2025 with distinction.

With the support of Ed Farm, Mrs. Bulger earned Apple Teacher certifications for both iPad and MacBook, completed all Swift Playgrounds badges, submitted multiple learning experience designs to the LEARN platform, and earned four microcredentials—all while continuing to lead in her classroom and school community.

Natalie's journey reflects what's possible when educators are equipped, inspired, and supported to grow, not just in their technical skills, but in their ability to shape the future of learning.

BY THE NUMBERS

754

Apple Education
certifications
earned

+24%

Increase in confidence
in ability to integrate
computer science concepts

1600+

Hours of professional
learning delivered

5

Apple
Distinguished
educators

+21.4%

Increase in confidence in ability to design
digitally-enhanced learning experiences

K-12 EDUCATORS

WE'RE CREATING A RIPPLE EFFECT

THAT WILL IMPACT
MILLIONS OF STUDENTS



Ed Farm

516 ED FARM TRAINED
EDUCATORS



EACH EDUCATOR
REACHES

2800

STUDENTS OVER 14
YEAR AVG. TENURE

1.4M+

STUDENTS TO
BE IMPACTED



WHERE TODAY'S MOST ENGAGED EDUCATORS CONNECT WITH TOMORROW'S TECH

The Future of Learning Summit (FOLS) is Ed Farm's premier professional development experience that brings a passionate community of educators to Birmingham to reimagine learning through technology and future-focused curriculum. 2025 marked the fourth annual gathering of forward-thinking educators committed to transforming classroom experiences.

WHAT FOLS DELIVERS

VIBRANT COMMUNITY CONNECTION

A network of forward-thinking educators sharing ideas, exchanging best practices, and building relationships that drive lasting change in classrooms and beyond.

DIGITAL PLAYGROUND EXPERIENCE

Hands-on access to cutting-edge educational technology with real-world applications—featuring the latest tools, platforms, and resources that empower both teachers and students.

EXPERT INSIGHTS FROM ED LEADERS

Presentations from founders, researchers, and industry leaders in education and technology who are redefining learning, providing actionable insights and strategies to bring the future of education into classrooms today.





FOLS serves current and past Ed Farm Teacher Fellows, educators, principals, staff, and community partners by making emerging technology accessible, applicable, and fun for educators. The summit is essential for our educator communities because it transforms traditional professional development into a fun and dynamic innovation-focused experience that prepares them for the advancements of tomorrow.

BY THE NUMBERS

128

Schools &
Organizations

18

School
Districts

42

Professional
Learning Hours

FOLS ATTENDEE STORY

“I cannot express my full gratitude for the opportunity to attend and participate in the Future of Learning Summit. I absolutely loved every part of learning and interacting with fellow educators, keynotes, panels, Ed Farm staff, and so many others who love learning and innovation in education and beyond.”



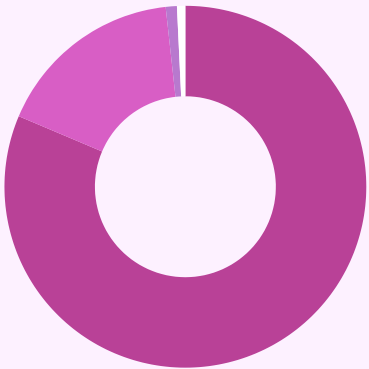
THE WORKFORCE

BUILDING TECH-READY WORKFORCES

Through a yearlong fellowship, Pathways to Tech, Ed Farm equips adult learners with the digital skills, career training, and confidence needed to transition into technology roles. Tailored for individuals 18 and older, the program combines hands-on learning with personalized support—offering courses in digital literacy, Swift programming, and access to over 30 certifications. Fellows also receive one-on-one career coaching, professional development workshops, and tools to strengthen their online presence and interview skills. Through this holistic approach, Pathways graduates are not only prepared to meet the demands of today’s workforce—they’re positioned to thrive in the careers of tomorrow.

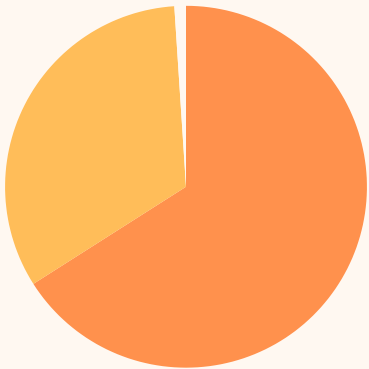
ADULT LEARNER’S SERVED: 600+ | 11 COHORTS

Ethnicity



BLACK/AA
81.9%
WHITE
16.6%
AMER. INDIAN
1%
AAPI
.5%

Gender



FEMALE
64.9%
MALE
34.2 %
NON-BINARY
0.9%

AVERAGE AGE: 36.9

EDUCATION LEVEL

- + HIGH SCHOOL DIPLOMA: 9.5%
- + ASSOCIATE’S DEGREE: 35.8%
- + SOME COLLEGE: 24.1%
- + GRADUATE DEGREE: 30.7%



ADULT LEARNER STORY

STEPHON GHOLSTON

Pathways Alumni, Cohort 7
Workforce Analyst at Shipt

After two years as a customer service specialist, Stefon Gholston saw a path to something greater. Through Ed Farm's Pathways to Tech program and a workforce development apprenticeship made possible by our partnership with Shipt, Stefon gained the digital skills and confidence to transition into a technical career.

In just six weeks, he prepared for and completed a competitive interview process—earning a promotion to Workforce Analyst at Shipt and a significant salary increase. Stefon's story reflects the power of access and upskilling. With exposure to coding, analytics, and real-world career coaching, he discovered a broader sense of what's possible.

The skills the I picked up from Ed Farm put me in a place that I didn't think I would be in. I don't think it is anything on this earth that I can't do." — Stefon Gholston

BY THE NUMBERS

90%

Growth in digital
skills competency

\$1,086,606

In salary increases amongst
Pathways graduates

REIMAGINED LEARNING ENVIRONMENTS FOR ALL

Ed Farm Spaces transform traditional environments in a school or community into hubs of innovation where all learners are inspired and provided future-focused, real-world relevant learning experiences. From podcasting and video production to Mac labs and gamified learning, Ed Farm Spaces empower students, educators and communities to grow their digital skills and expand their creativity.

BY THE NUMBERS

5,465
Students
Served

283
Teachers
Served

17
Spaces Open or
In Progress

43,833
Square Feet of
Transformed
Learning Space

SPACES STORY

Ed Farm Spaces are vibrant hubs of innovation, creativity, and real-world problem solving. Through our partnership with Birmingham City Schools, we have developed several dynamic Ed Farm Spaces, including one of our first and most impactful at South Hampton K–8. There, Library Media Specialist Tandra Clark has fully embraced the space’s potential, empowering students to lead projects that matter—from launching a student-led podcast to designing hands-on solutions for community challenges.

A standout example is The Hygiene Hub, a web-connected vending machine dispensing free feminine hygiene products and diapers. This student-driven initiative earned \$22,000 in national STEM competition funding from Samsung and Altec, demonstrating the powerful impact when students are given agency, resources, and support.



Birmingham’s South Hampton K-8 School National Finalists for \$100K STEM Prize
By Birmingham Times - March 3, 2025 3046 0

ED FARM SPACES SPOTLIGHT

WARNER ROBINS INNOLAB

"I am proud of the partnership with Ed Farm which has brought our new community innovation lab to life; an inclusive, dynamic space where people of all ages can develop their skills and pursue their passions."

LARHONDA W. PATRICK

Mayor of Warner Robins, Georgia

TOUR THE SPACE

LEARN (NOW MODIVEDU)

LEARN is the all-in-one professional learning platform for innovative educators. Designed to enhance educators’ digital fluency, LEARN provides future-focused, tech-infused learning experiences that inspire growth, spark creativity, and transform classroom instruction.

KEY FEATURES

LEARNING EXPERIENCE DESIGNS (LEDs)

High quality, future-focused, and tech-infused lesson plans ready for immediate use.

MICRO-COURSES

Short, focused courses that offer practical knowledge and skills enabling educators to learn at their own pace.

MICRO-CREDENTIALS

Targeted, skills-based certifications that validate educators’ expertise.

RESOURCES

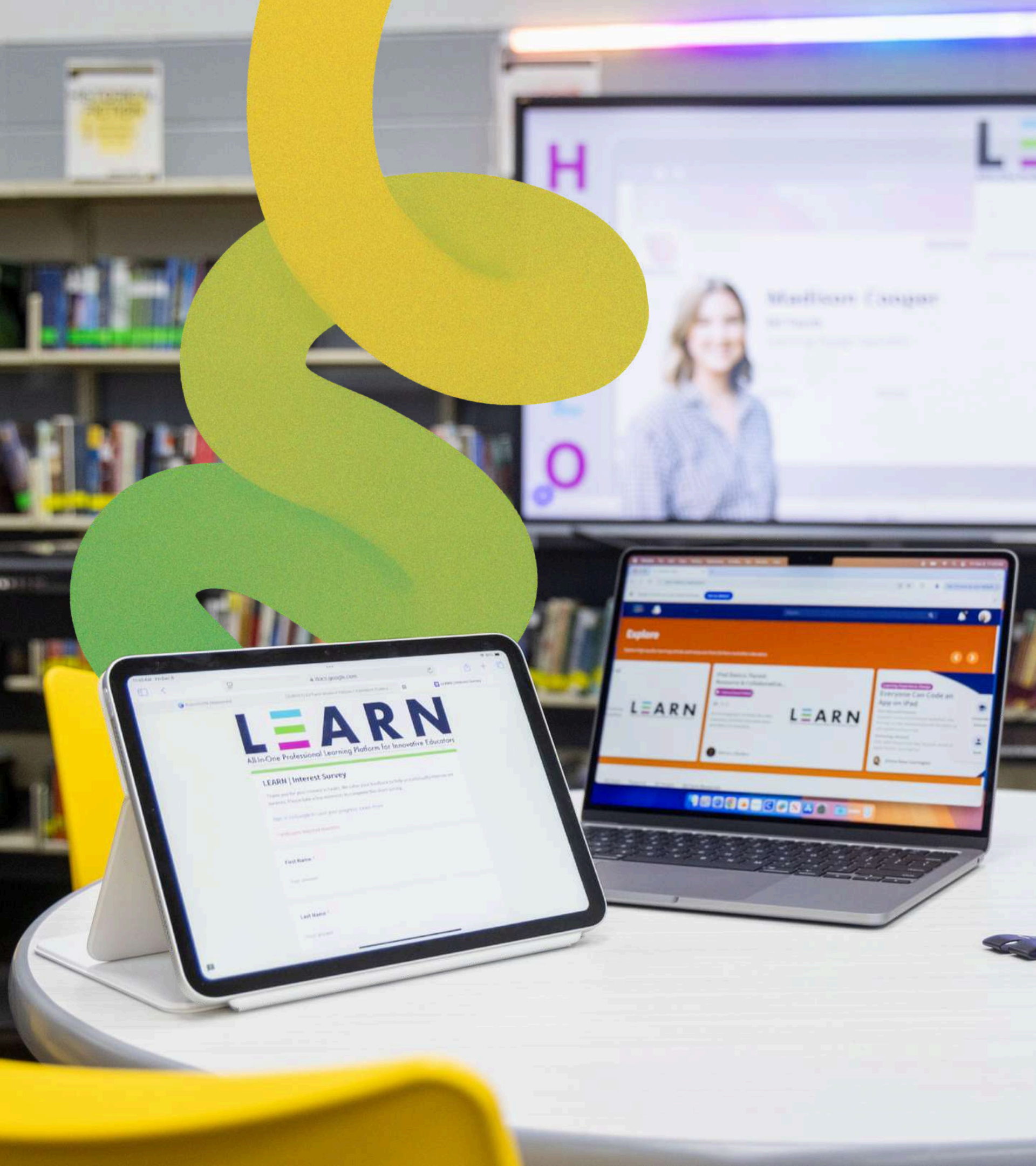
Curated tools, guides, and templates designed to support and enhance classroom instruction.

LEARN STORY

JENNIE BROWN

Ed Farm Teacher Fellow (2023–2024)
Secondary Math Teacher, Montgomery Public Schools

Jennie Brown, a 7th-grade math teacher and Ed Farm Teacher Fellow, leveraged the LEARN platform to transform her instruction with student-centered, real-world learning. After earning ten micro-credentials (more than any other educator to date) she integrated AI tools to personalize learning, promote creativity, and re-engage her students. With hands-on coaching and support, Jennie shifted from traditional methods to a tech-rich, future-focused model that reflects Ed Farm’s mission: building confident educators and digitally fluent classrooms where students lead, create, and solve real problems.



THE MOVEMENT

Informed by galleries from the Birmingham Civil Rights Institute (BCRI), The Movement is a mobile app and teaching tool dedicated to sharing Birmingham's rich history through visual stories, audio interviews, and AR installations across the city. Recognizing that youth shape movements and culture, The Movement features young people as historians and storytellers, empowering them with the tools to guide and create the app's content. Immersive experiences bring Civil Rights history to life through the eyes of the next generation.

KEY FEATURES

HISTORY MAP

Effortlessly find historical locations and their stories with a customized interactive map

CIVIL RIGHTS IN AR

Monuments and statues that honor the Civil Rights movement come to life with engaging augmented reality

VIDEO STORIES

Learn about complex historical narratives with clarity and depth through powerful storytelling

HISTORY CHATS

Uncover little known truths about the significant locations, moments, and figures of the Civil Rights movement



THE MOVEMENT STORY

YOUTH-LED STORYTELLING THAT HONORS BIRMINGHAM'S LEGACY

Through The Movement app, Ed Farm empowered youth to become digital historians of Birmingham's Civil Rights legacy. As part of our yearlong Griot Fellowship, student storytellers received intensive training in research, film production, and augmented reality. In partnership with the Birmingham Civil Rights Institute, they sourced archival materials and interviewed historians to create an immersive, multimedia experience that includes short films, audio interviews, and augmented reality scenes, all of which bring to life pivotal moments in Birmingham's history. Aligned with our mission, The Movement centers youth voice, creativity, and digital fluency, turning learners into creators while empowering educators.

CLOSING

In just five years—launched amid the challenges of a global pandemic—Ed Farm has grown from an audacious idea to an impactful organization reaching thousands of K-12 students, educators and adult learners. In the next 5 years, we’re energized to expand our reach across the Southeast, with a special focus on Alabama’s Black Belt Region, and beyond. Our commitment is to build more Ed Farm Spaces, strengthen partnerships, and bring transformative, tech-focused programming to schools and communities. Together with our partners, we’re shaping a future where digital fluency, creativity, and opportunity are accessible to all. The journey continues—and the best is yet to come.

OUR PARTNERS

FOUNDING PARTNERS:

Apple
Alabama Power Foundation

EDUCATION:

Birmingham City Schools
Montgomery Public Schools
Decatur City Schools
Russellville City Schools
Atlanta Public Schools*
Perry County Schools
Hale County Schools
Jefferson County Schools
i3 Academy
Holy Family Cristo
Rey High School

EDUCATION, CONT:

Early County Schools, GA
Magic City Acceptance Academy, GA
Dougherty County School System, GA
DeKalb County Schools, GA
Guilford County Schools, NC*
Colleton County Schools, SC*

COMMUNITY:

CSTA
National Coalition of 100
Black Women
Black Belt STEM Institute
A.G. Gaston Boys and Girls Club
Community Foundation of Birmingham
Kapor Foundation
Innovate Alabama

PUBLIC SECTOR :

City of Warner Robins, GA
City of Birmingham, AL
City of Montgomery, AL
State of Alabama

INDUSTRY:

Hyundai (HMMA)
Fetch
Shipt
Spire
BlueCross Blue Shield of Alabama
Encompass Health
Oakworth Capital
Truist Foundation

PARTNER WITH ED FARM

Let’s shape the future of learning, together. Through partnerships with schools, industries, and municipalities – we transform learning across entire communities.

SCHOOL DISTRICTS

We collaborate with school districts and education organizations to close digital skill gaps through tech-forward programming and leading-edge learning environments.

INDUSTRY

We collaborate with leading companies to develop talent pipelines of today and tomorrow with industry-aligned student curriculum and comprehensive workforce training.

WORKFORCE PROGRAMS

We partner with mayors and civic leaders to provide future-focused programs, learning spaces, and workforce training that expands opportunity and fuels economic growth in their communities.

PARTNER TESTIMONIALS

"(Birmingham City Schools) is a very traditional school system and Ed Farm has really pushed us to the new millenium. Having organizations like Ed Farm puts us in a position where we can be competitive."

DR. MARK SULLIVAN
Superintendent, Birmingham City Schools



"Hyundai has become so successful because it embraces innovation and technology, and the success of our future workforce depends on our young people embracing it as well. Ed Farm’s work in bringing technology into classrooms builds bridges to success on whatever paths their passions may lead them to take."

SCOTT POSEY
Hyundai Motor Manufacturing Alabama



"Ed Farm opens doors for both children, as well as adults, to explore careers in technology, STEM, and coding."

RANDALL WOODFIN
Mayor of Birmingham, Alabama



PROPEL EDUCATION BOARD MEMBERS

Anthony Oni, Chairman of the Board, Managing Partner & CEO, Elevate Future Initiative at Energy Impact Partners, Ed Farm Founder

Jay Brandrup, Principal, Kinetic Communications

Nichole Francis-Reynolds, VP & Head of Global Government Relations, ServiceNow

John Hudson, Chief External Affairs Officer, Entergy

Lamell McMorris, Founder & CEO, Phase 2 Consulting

Myla Calhoun, CEO & President, Propel Education

CONNECT WITH ED FARM

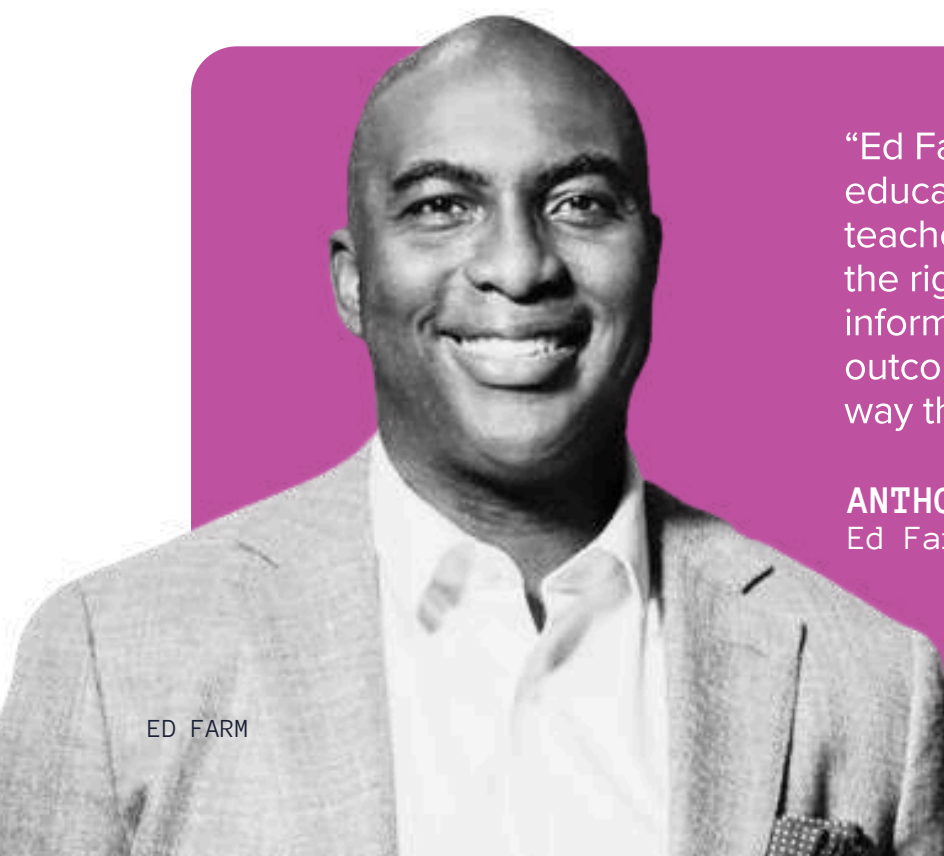
 [EDFARM.ORG](https://edfarm.org)

 [@_EDFARM](https://www.instagram.com/_edfarm)

 [@EDFARMBHM](https://www.facebook.com/edfarmbhm)

 [EDFARM](https://www.linkedin.com/company/edfarm)

 [@EDFARM-CULTIVATECHANGE](https://www.youtube.com/channel/UC...)



“Ed Farm creates a learning environment and education ecosystem that allows students, teachers and communities to be equipped with the right tools, the right training and the right information so that as we look at the education outcomes that we want to change, we do it in a way that far exceeds our wildest expectations.”

ANTHONY ONI
Ed Farm Founder

