



Project Presentation

Galea Residence
Columbia, Limassol



Galea Residence

Columbia Germasogeia



One of the most sought-after area of Limassol.
Well-developed infrastructure — supermarkets,
cafes, schools, kindergartens.



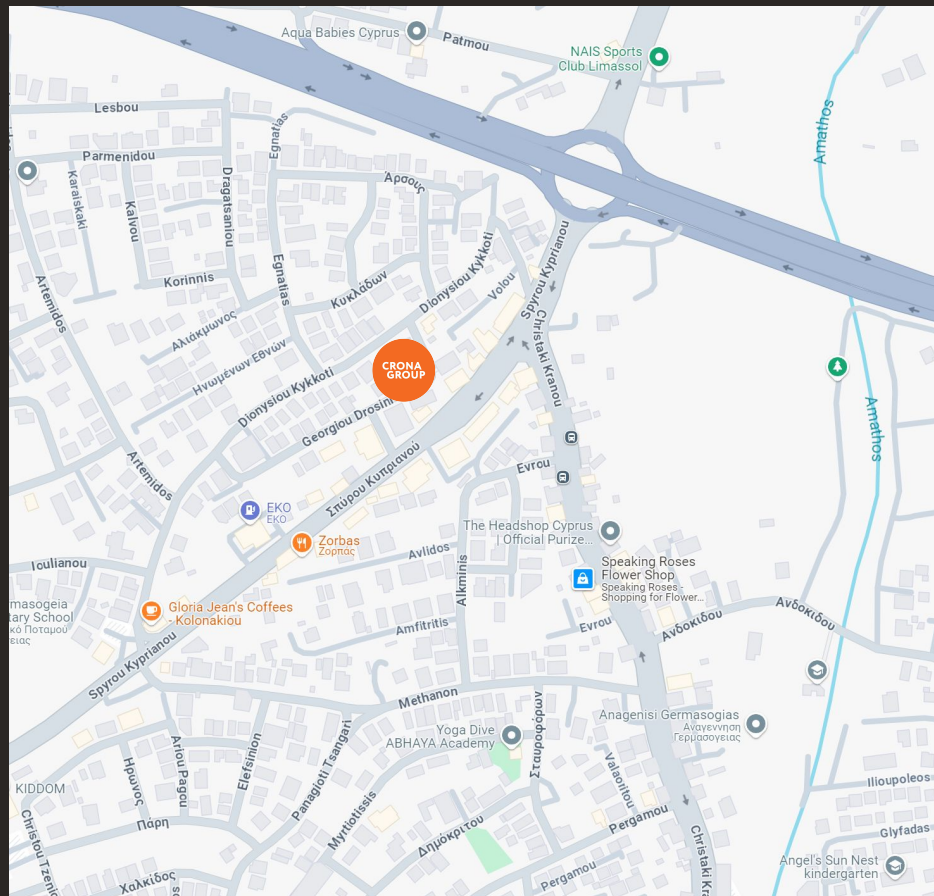
Green area. Ideal for families.
Popular among expats.



Convenient access to the highway and the airport.

Planning Permit already issued.
Building Permit — late December 2025.

[Location on Google Maps](#)



GALEA 1.Floor

101

Bedroom: 2

Indoor covered, sqm: 85.35

Veranda covered, sqm: 24.40

Total area, sqm: 109.75

102

Bedroom: 2

Indoor covered, sqm: 84.10

Veranda covered, sqm: 23.95

Total area, sqm: 108.05

103

Bedroom: 2

Indoor covered, sqm: 85.30

Veranda covered, sqm: 23.50

Total area, sqm: 108.80

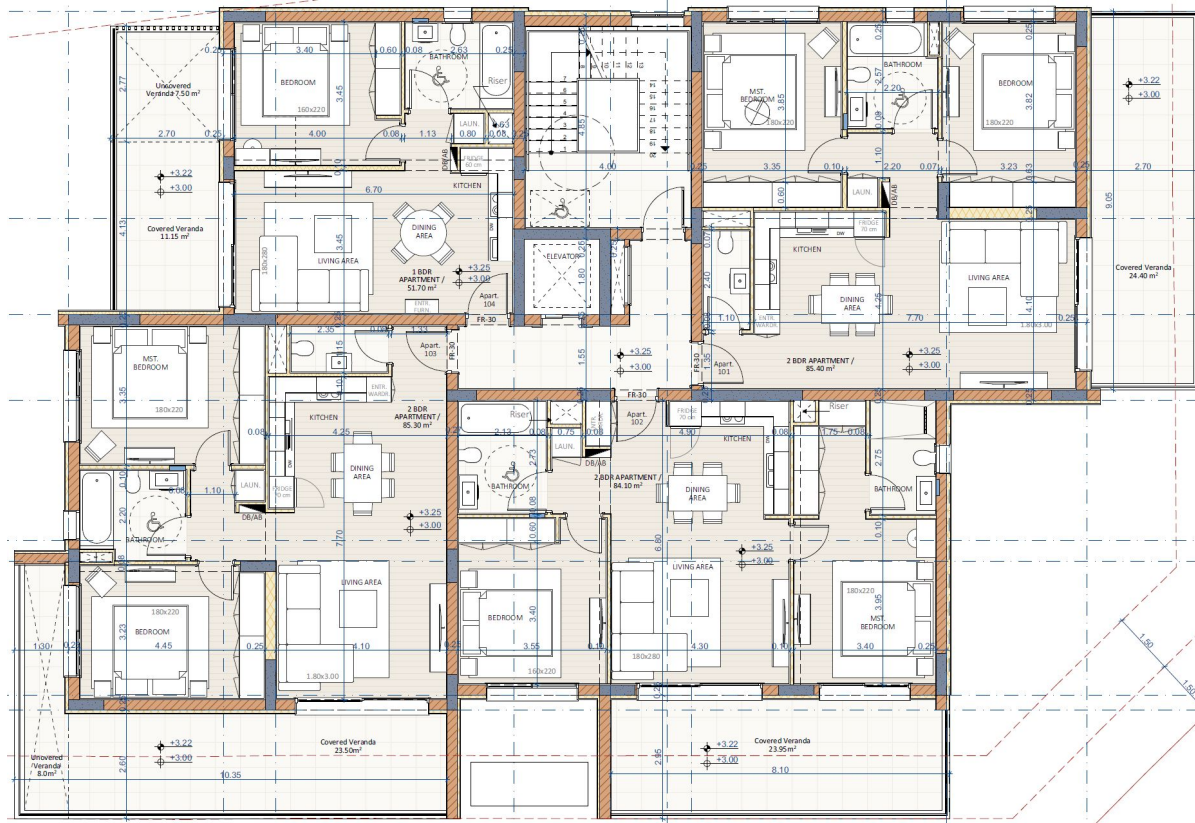
104

Bedroom: 1

Indoor covered, sqm: 51.70

Veranda covered, sqm: 11.15

Total area, sqm: 62.85



GALEA 2.Floor

201

Bedroom: 2

Indoor covered, sqm: 85.35

Veranda covered, sqm: 24.40

Total area, sqm: 109.75

202

Bedroom: 2

Indoor covered, sqm: 84.10

Veranda covered, sqm: 22.70

Total area, sqm: 106.80

203

Bedroom: 2

Indoor covered, sqm: 85.30

Veranda covered, sqm: 23.10

Total area, sqm: 108.40

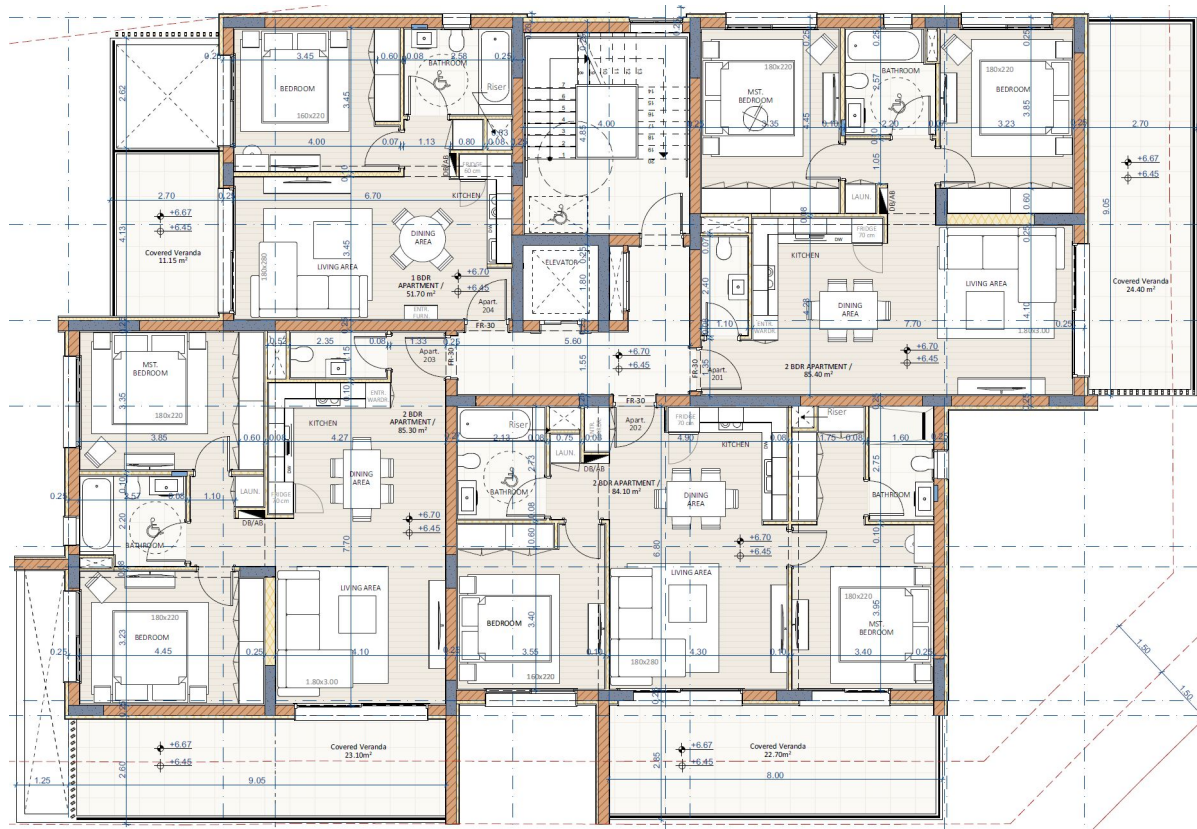
204

Bedroom: 1

Indoor covered, sqm: 51.70

Veranda covered, sqm: 11.15

Total area, sqm: 62.85



GALEA 3.Floor

301

Bedroom: 2

Indoor covered, sqm: 85.35

Veranda covered, sqm: 24.00

Total area, sqm: 109.35

302

Bedroom: 2

Indoor covered, sqm: 84.10

Veranda covered, sqm: 22.70

Total area, sqm: 106.80

303 Penthouse

Bedroom: 3

Indoor covered, sqm: 140.50

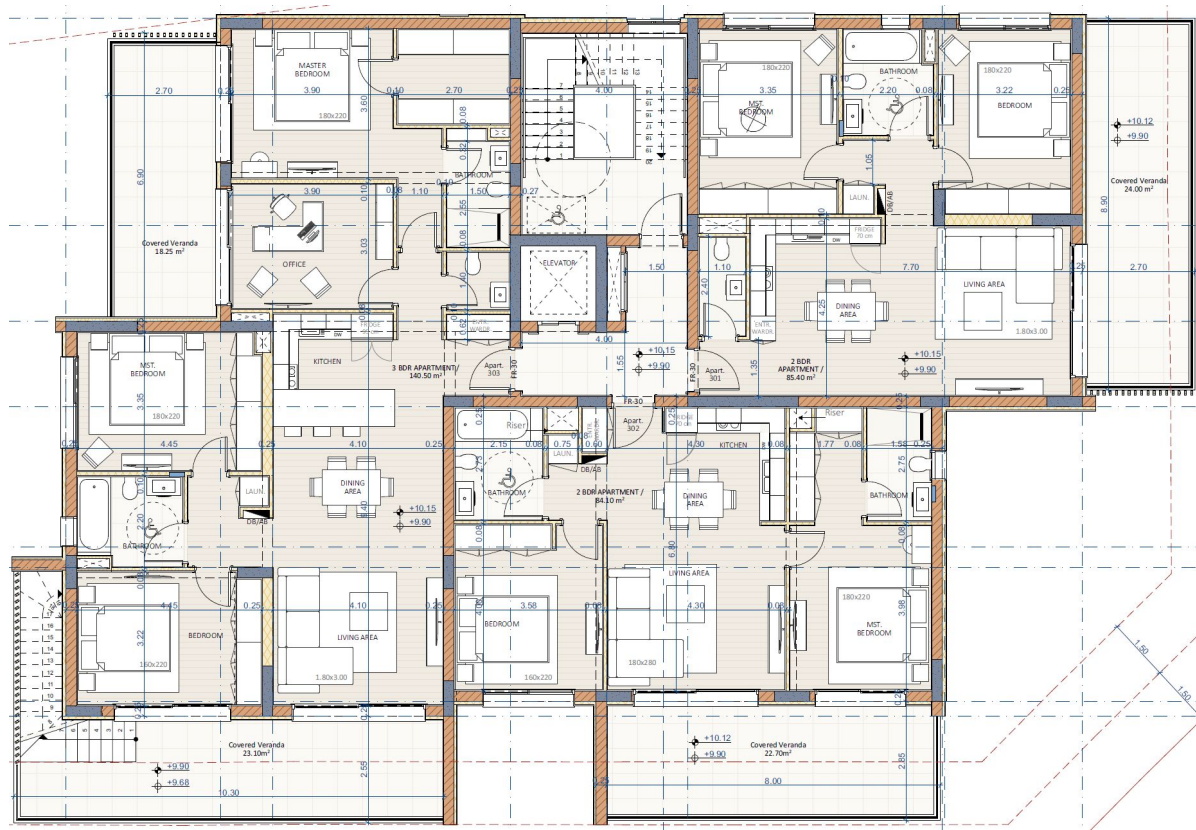
Veranda covered, sqm: 41.35

Roof Garden (indoor area): 14.50

Roof Garden (pergola* area): 13.90

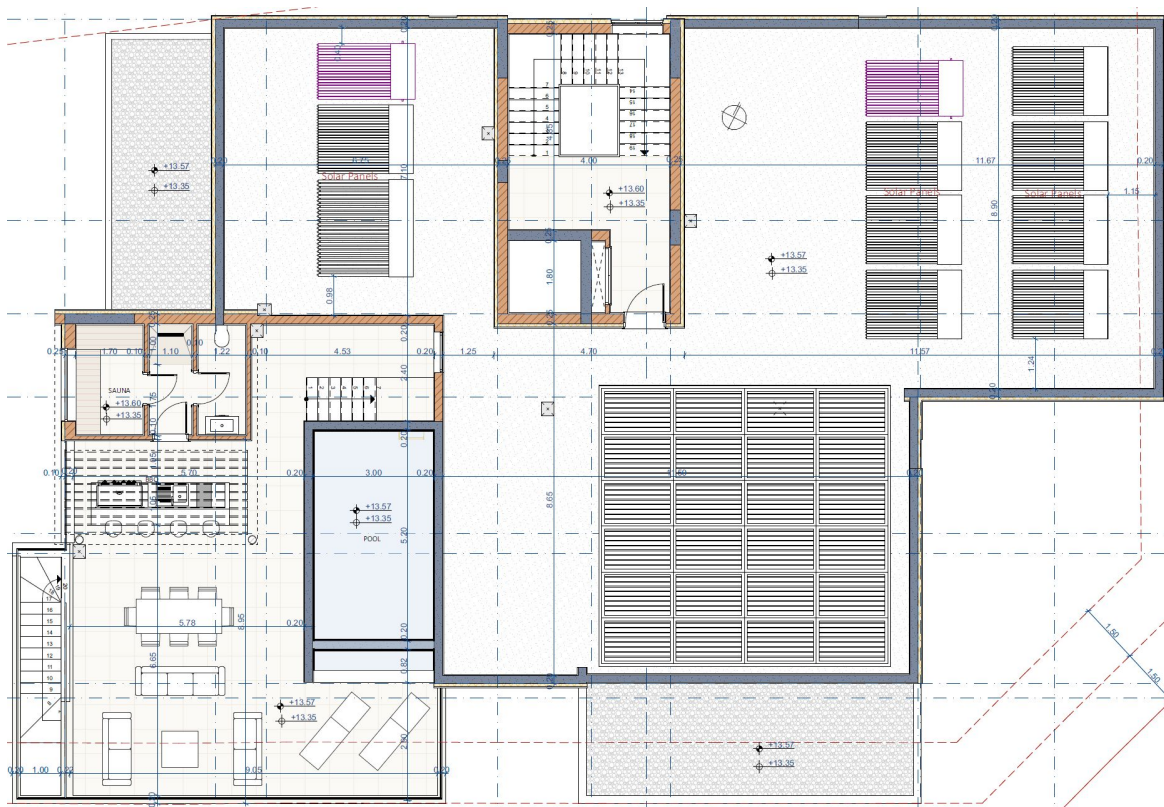
Roof Garden (uncovered area): 85.40

Total area, sqm: 181.85



GALEA

The drawing is for reference only. The penthouse will be delivered without the swimming pool and the staircase leading to it, and without the BBQ area and its pergola. A provision will be made for the sauna.

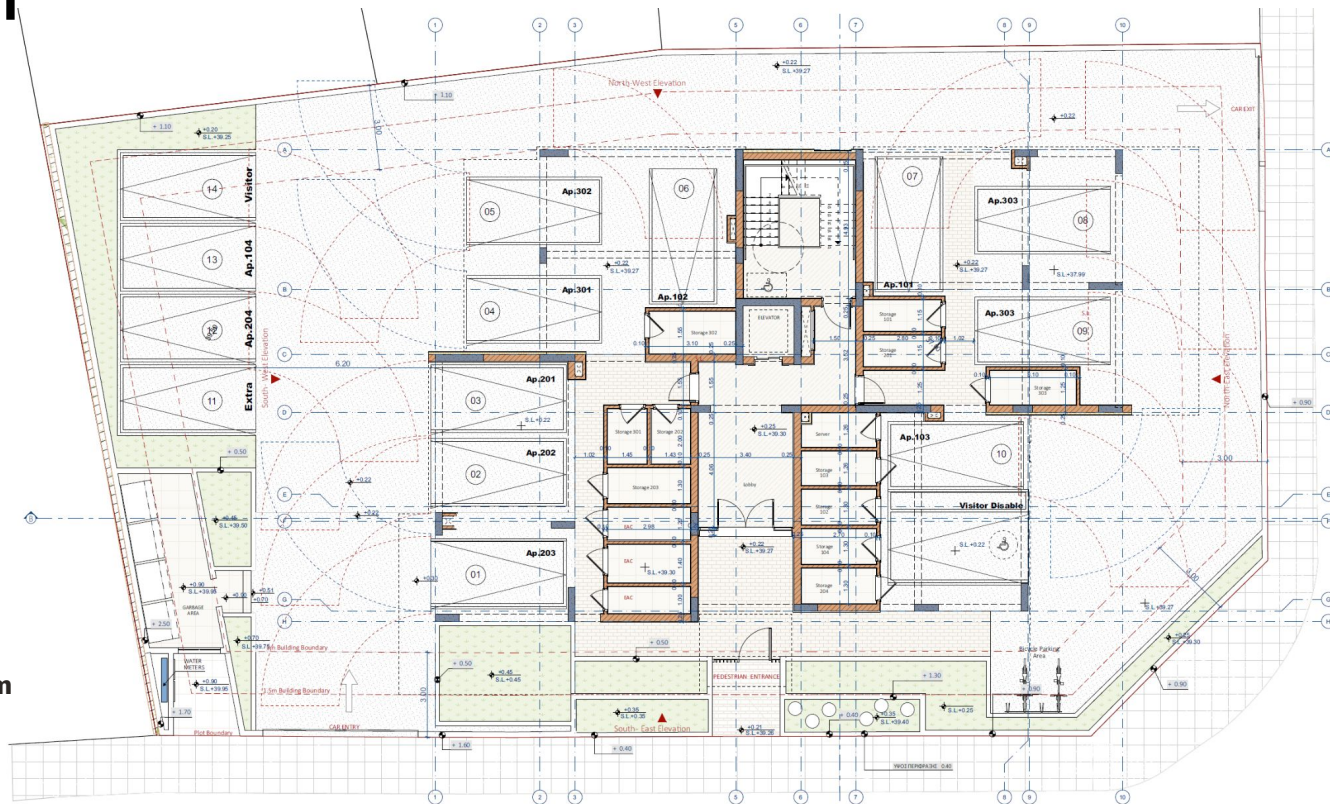


GALEA Masterplan

Apartments Mix

1-Bedrooms: 2
2-Bedrooms: 8
3-Bedroom Penthouse: 1

Total apartments: 11 units
Total covered area: 1175.25 sqm



GALEA Residence





STRUCTURE

- Ceiling height: 3.00 m
- Reinforced concrete structure with external walls built using 25.0 cm bricks with enhanced thermal insulation.

INTERIOR FINISHES

- Off-white painted internal walls and ceilings.
- Italian internal doors 2.60 m.
- Living room, dining room, bedrooms, and kitchen: laminate flooring.
- Wardrobes with hinged lacquered matt doors with black matt gola handle.



ELECTRICAL EQUIPMENT

- Intercom system.
- White sockets and switches throughout the living areas.

BATHROOM

- Walls and floors: combination of two tiles, 60 x 120 cm.
- European brand chrome mixers and shower.
- European brand sanitary.
- Wall-mounted vanity units with drawers and ceramic washbasin.
- Shower cabin 2.20 m with swinging door

HEATING AND COOLING

- Installed VRV system.
- Provision Underfloor heating system in the living room, dining room, and bedrooms (piping installed).



KITCHEN

- Stone-effect porcelain worktop and backsplash.
- Silgranit white undermount bowl sink and chrome faucet from BLANCO.
- Fully fitted Italian kitchen cabinetry.
- Soft-closing gola system cabinetry.

ENERGY EFFICIENCY

- Cost savings with a photovoltaic system.
- Building certified as energy-efficient, Class A.
- Thermally insulated doors and windows.



TERRACES AND BALCONIES

- Glazing balustrades by ALUMIL or similar.
- Tiled balconies, terraces, and roof garden.
- Doors 2.55 m height by ALUMIL or similar.
- Windows 1.45 m height by ALUMIL or similar.

SECURITY

- Secure access to the complex with key and intercom system.
- Video entry access control.
- High-security multi-point locking doors, 2.20 m height
- CCTV installed at ground floor to secure perimeter.

PARKING AND STORAGE

- Parking space for each apartment (1 car), two parkings for the penthouse.
- Personal storage and dedicated spaces for a washing machine and dryer.

Project Presentation



**Galea Residence,
11 apartments**

+357 25 004117

info@cronaproperty.com

www.cronagroup.com