



ПРОЕКТ: GALEA

ID: GALEA 102

РАСПОЛОЖЕНИЕ: Колумбия, Лимассол

ТИП: Апартаменты

ЗАВЕРШЕНИЕ СТРОИТЕЛЬСТВА: Январь 2028 года

СПАЛЬНИ: 2

СТОИМОСТЬ: €475 420+НДС

ПАРКИНГ: 1

ВНУТРЕННЯЯ ПЛОЩАДЬ: 84.10

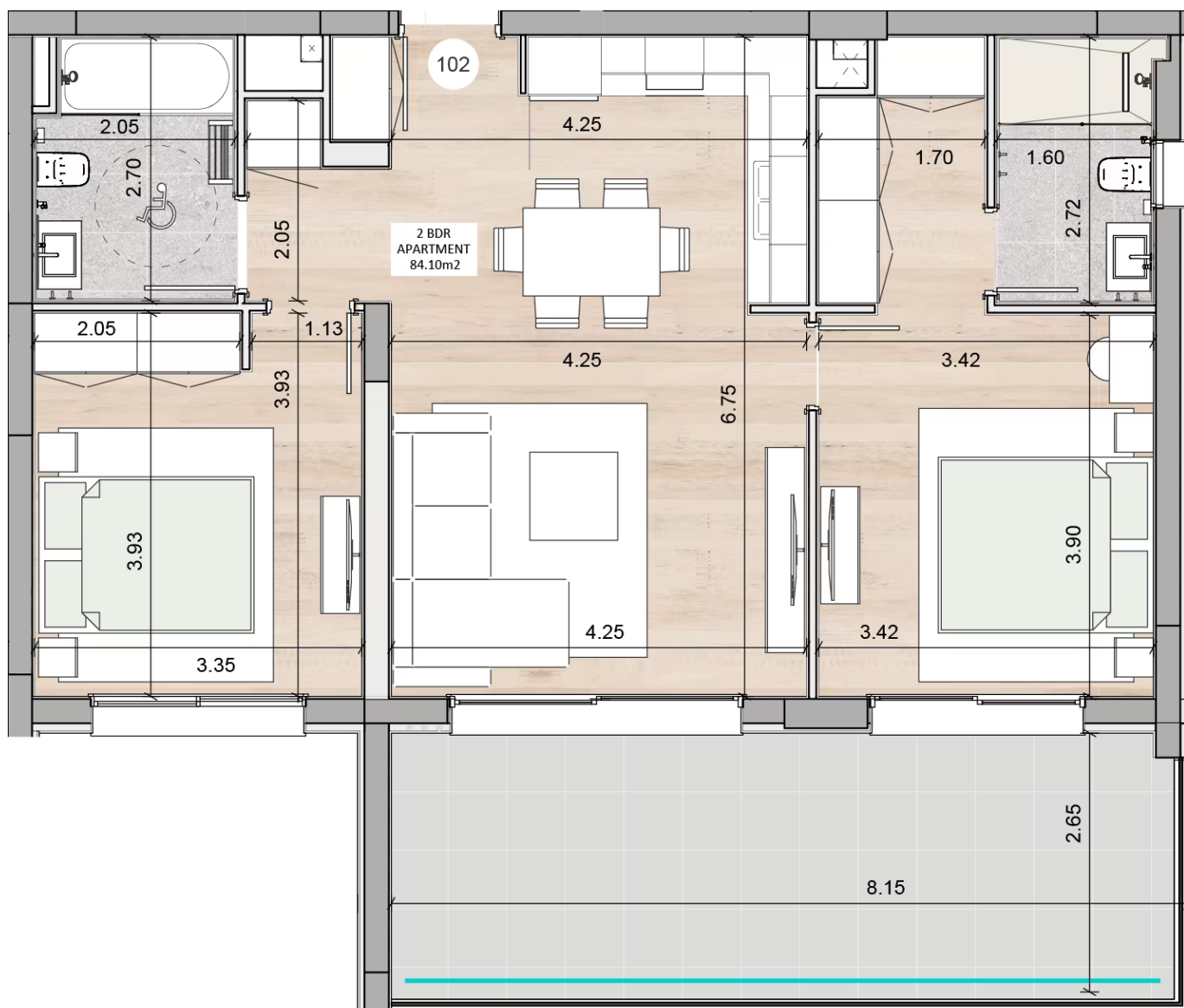
ЭТАЖ: 1

ОБЩАЯ КРЫТАЯ ПЛОЩАДЬ: 108.05

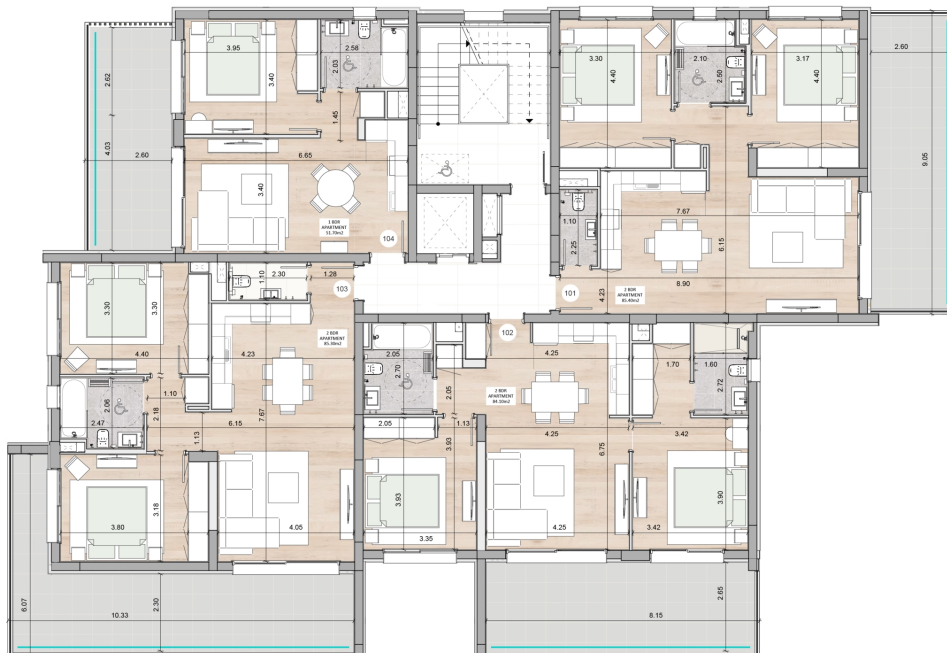
ПЛОЩАДЬ КРЫТОЙ ВЕРАНДЫ: 23.95

ПЛОЩАДЬ ОБЩЕГО ПОЛЬЗОВАНИЯ: 7.90

Планировка апартаментов



1-й этаж



The floor plan of the second floor is divided into several functional areas. On the left, a large outdoor area with a green lawn and a paved walkway leads to a series of rooms labeled Visitor, 104, 204, and Extra. The main building structure features a central Lobby connecting to various rooms. To the left of the Lobby are rooms 201, 202, and 203, each with associated storage (Storage 201, Storage 202, Storage 203) and EAC (Educational Activity Center) spaces. To the right of the Lobby are rooms 101, 102, and 103, each with associated storage (Storage 101, Storage 102, Storage 103) and a Visitor Display area. The top of the plan shows rooms 301, 302, and 303, each with associated storage (Storage 301, Storage 302, Storage 303). A Pedestrian Entrance is located at the bottom center, leading into the Lobby. The plan also includes a large outdoor area on the right with a green lawn and a paved walkway.