

PROJECT  
GALEA

BEDROOMS  
2

AREA  
106.80

FLOOR  
3

UNIT  
GALEA 302



PROJECT: GALEA

UNIT NO: GALEA 302

LOCATION: Columbia, Limassol

TYPE: Apartment

COMPLETION: January 2028

BEDROOM: 2

PARKING: 1

INTERNAL AREA: 84.10

FLOOR: 3

TOTAL COVERED AREA: 106.80

COVERED VERANDAS AREA: 22.70

COMMON AREA: 7.90

CONTACT PHONE  
+35725055962

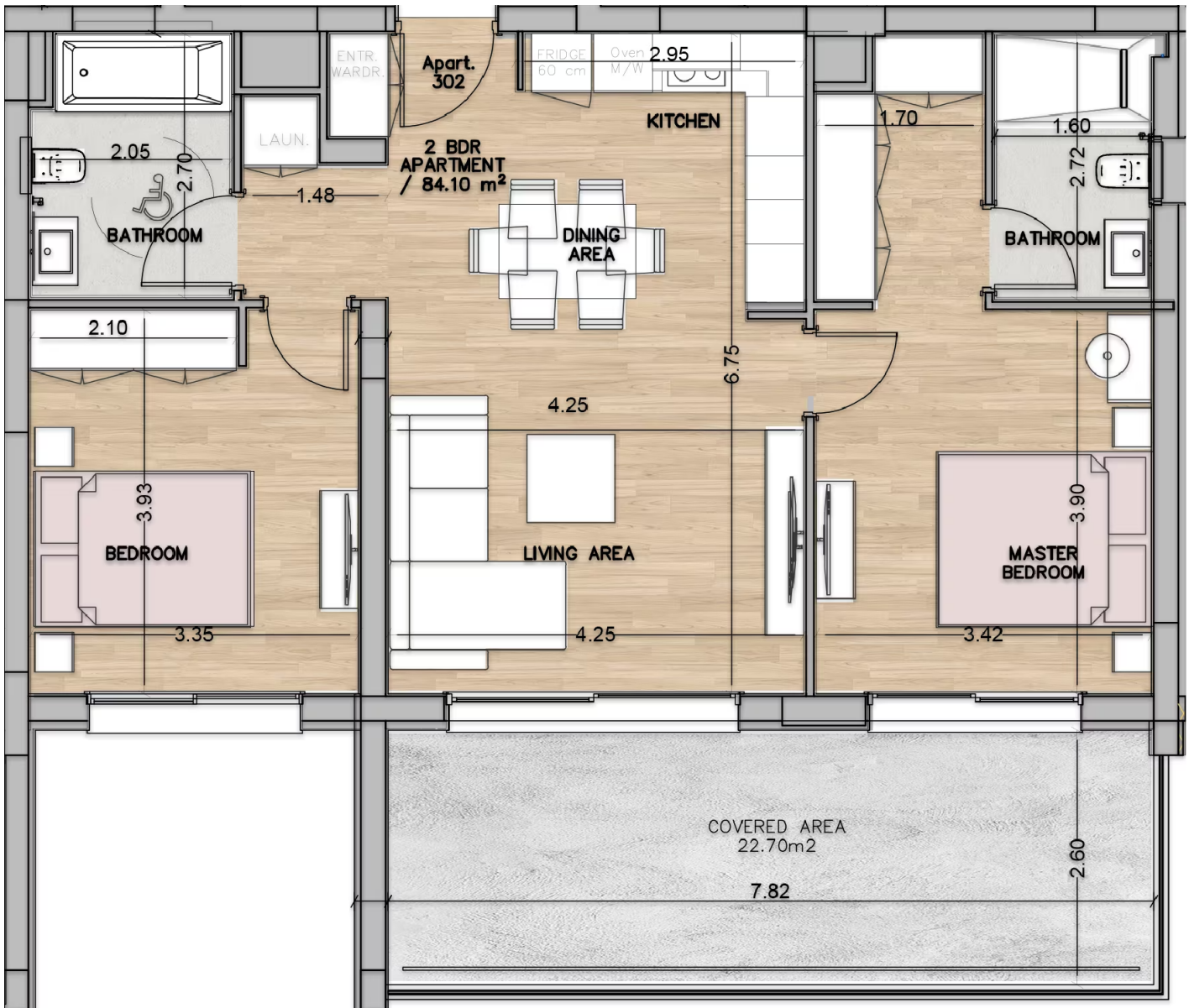
EMAIL  
info@cronaproperty.com

ADDRESS  
21 Andrea Kariolou, Limassol, Cyprus

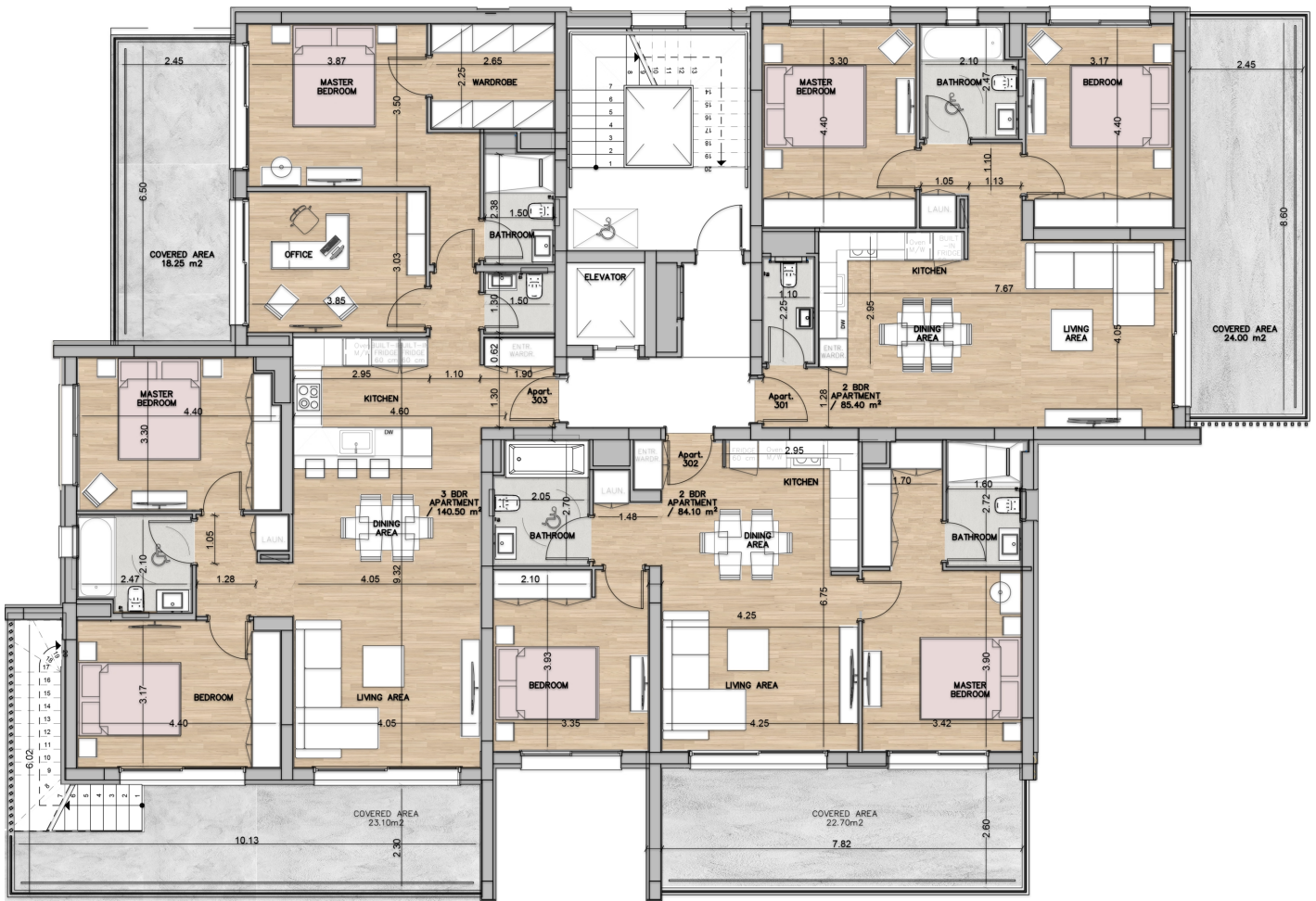
WEBSITE  
www.cronagroup.com



# Unit layout



# 3rd floor



# Ground floor

