

PROJECT  
GALEA

BEDROOMS  
2

AREA  
108.05

FLOOR  
1

UNIT  
GALEA 102



PROJECT: GALEA

UNIT NO: GALEA 102

LOCATION: Columbia, Limassol

TYPE: Apartment

COMPLETION: January 2028

BEDROOM: 2

**PRICE: €475 420+VAT**

PARKING: 1

INTERNAL AREA: 84.10

FLOOR: 1

TOTAL COVERED AREA: 108.05

COVERED VERANDAS AREA: 23.95

COMMON AREA: 7.90

CONTACT PHONE  
+35725055962

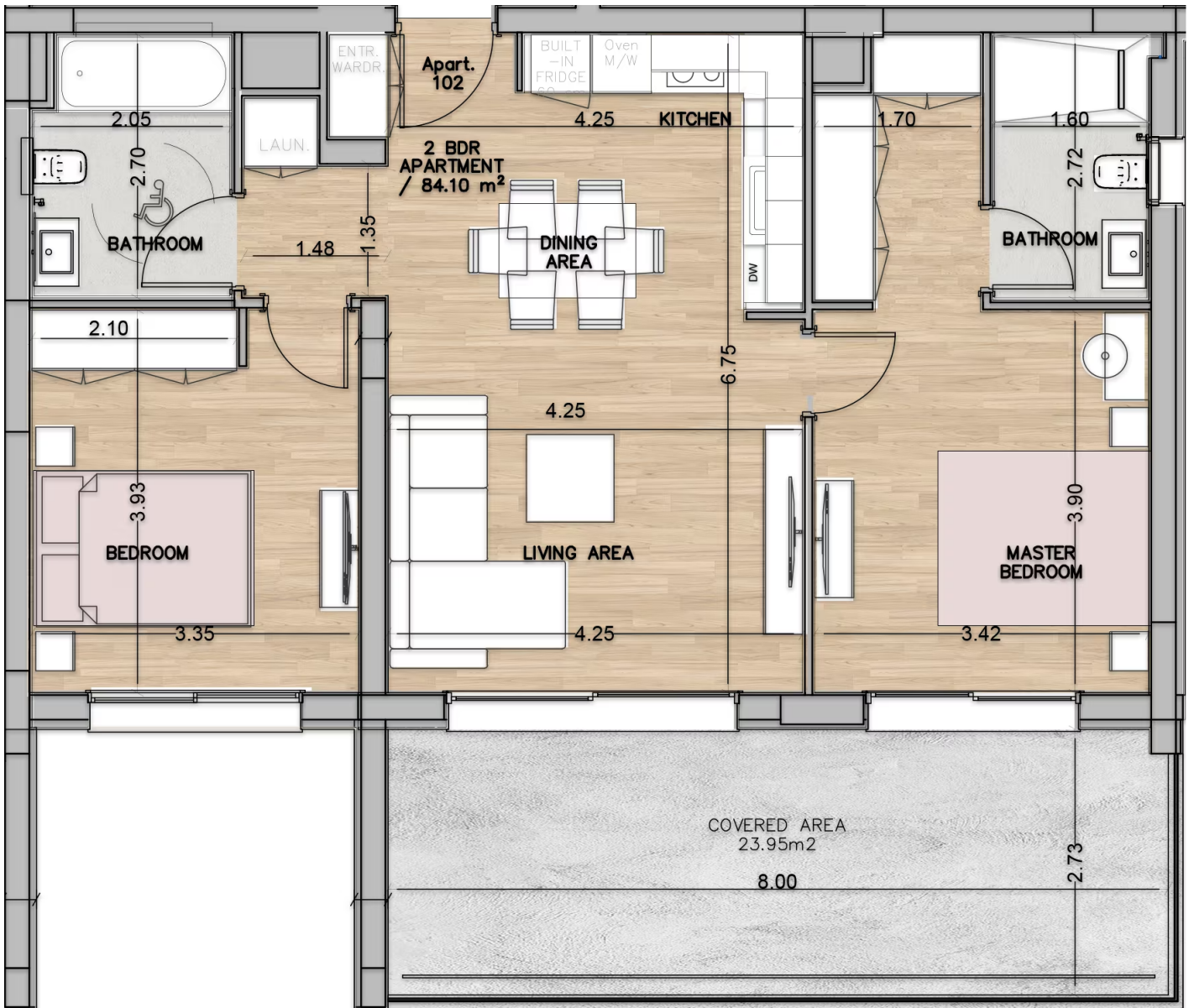
EMAIL  
info@cronaproperty.com

ADDRESS  
21 Andrea Kariolou, Limassol, Cyprus

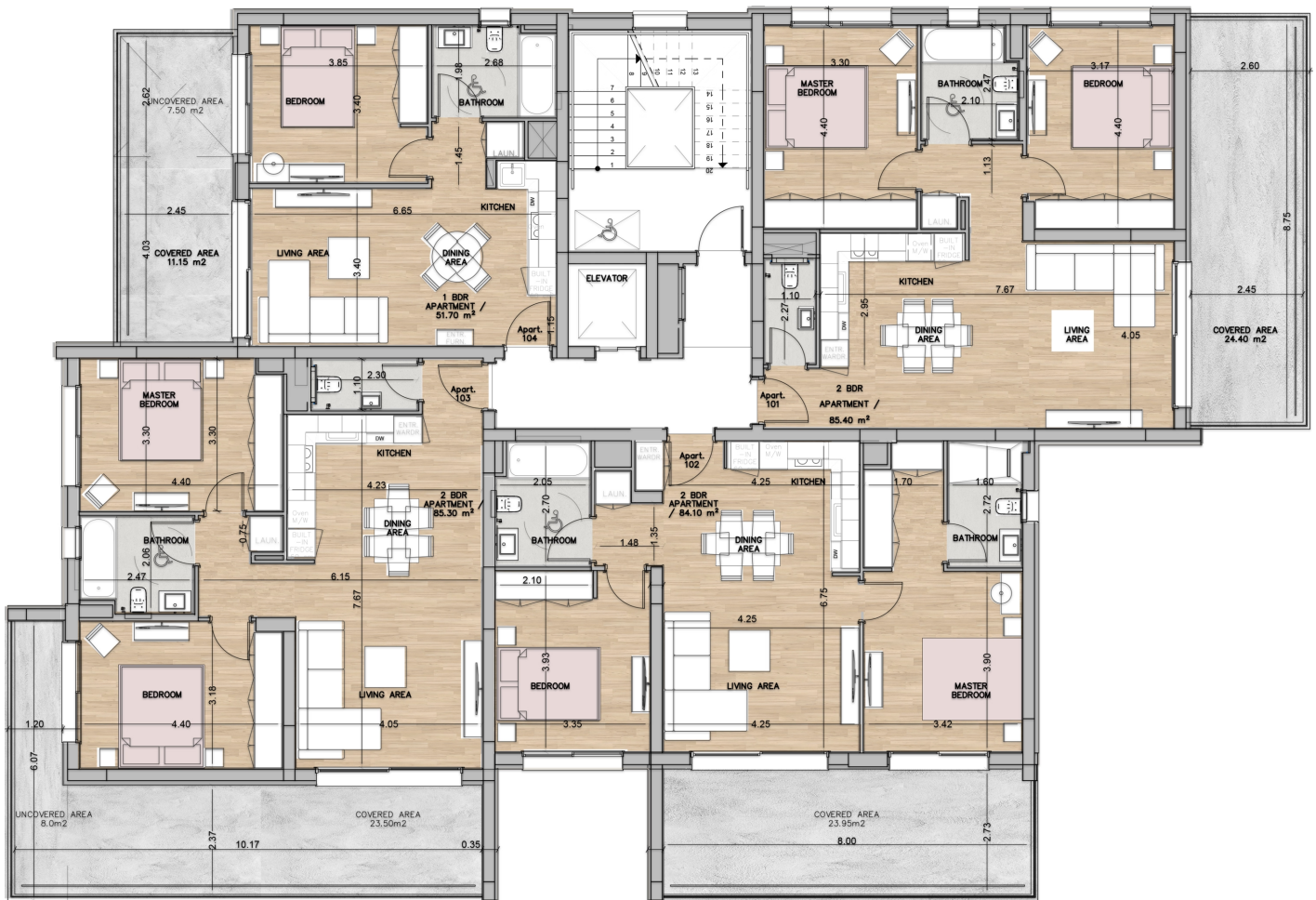
WEBSITE  
www.cronagroup.com



# Unit layout



# 1st floor



# Ground floor

