

PROJECT
GALEA

BEDROOMS
2

AREA
109.75

FLOOR
1

UNIT
GALEA 101



PROJECT: GALEA

UNIT NO: GALEA 101

LOCATION: Columbia, Limassol

TYPE: Apartment

COMPLETION: January 2028

BEDROOM: 2

PRICE: €482 900+VAT

PARKING: 1

INTERNAL AREA: 85.35

FLOOR: 1

TOTAL COVERED AREA: 109.75

COVERED VERANDAS AREA: 24.40

COMMON AREA: 8.02

CONTACT PHONE
+35725055962

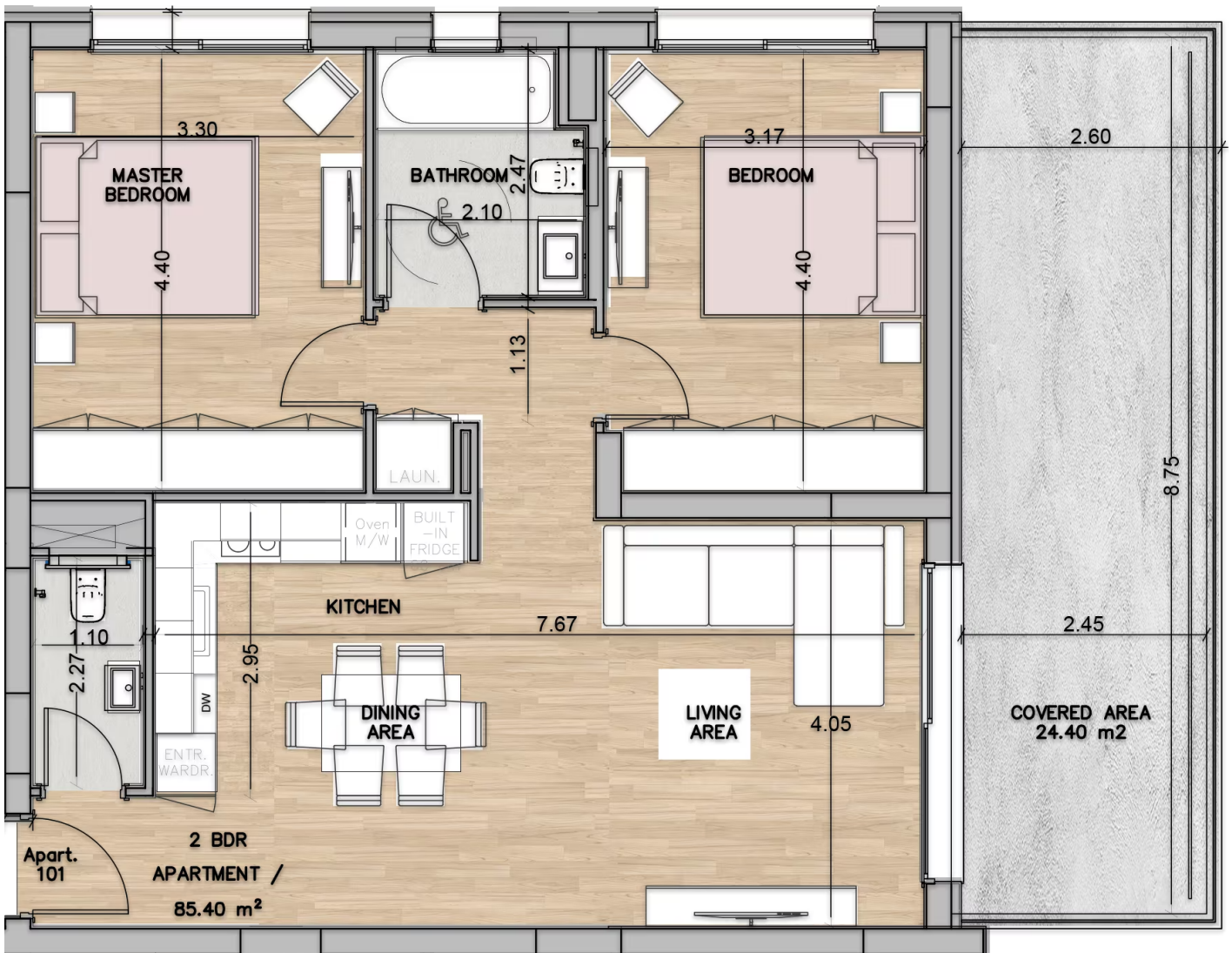
EMAIL
info@cronaproperty.com

ADDRESS
21 Andrea Kariolou, Limassol, Cyprus

WEBSITE
www.cronagroup.com



Unit layout



1st floor



Ground floor

