



ANANTARA

DRAGON SESEH BALI
RESORT & RESIDENCES



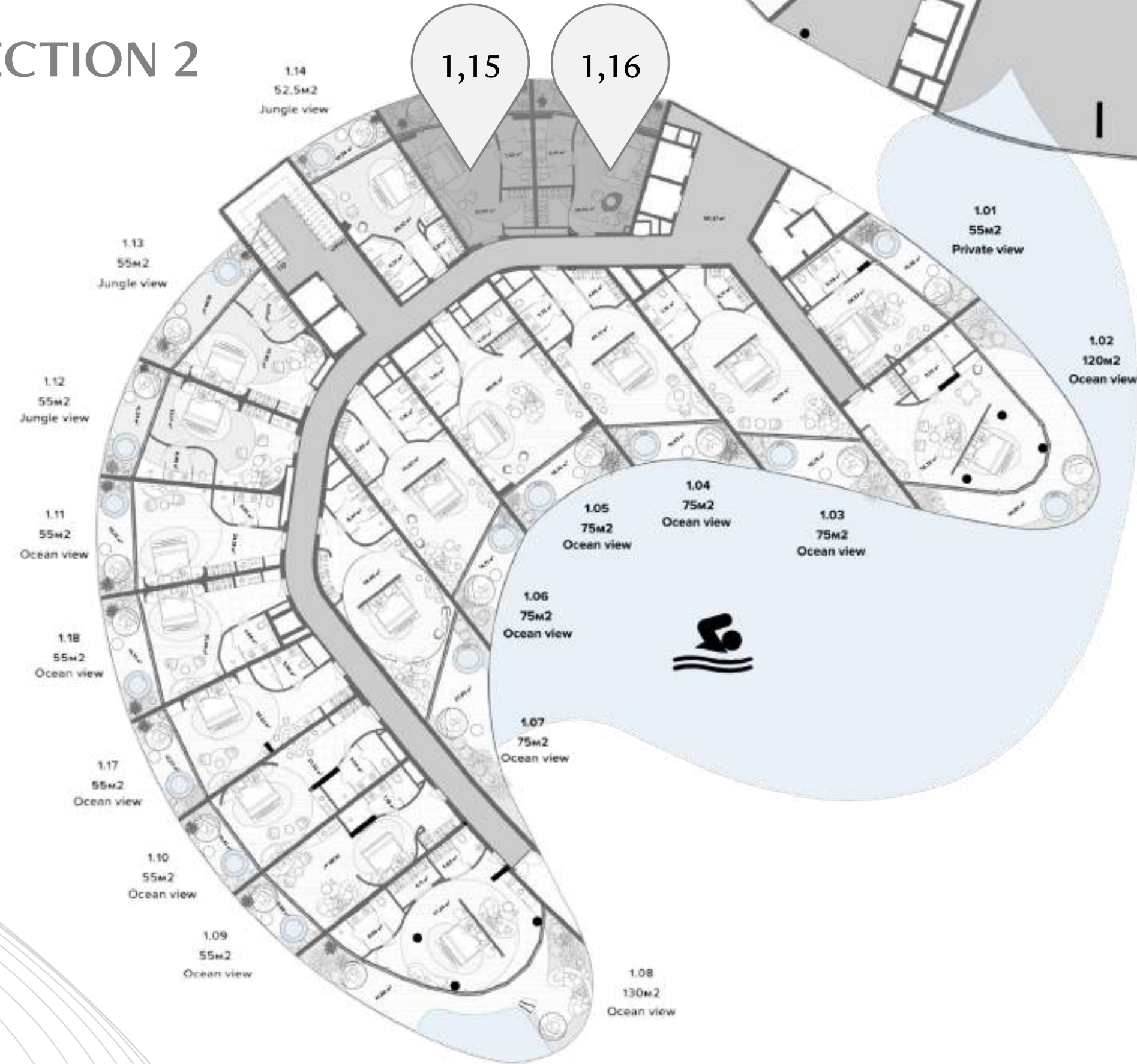
ANANTARA DRAGON RESORT & RESIDENCES

Jungle view

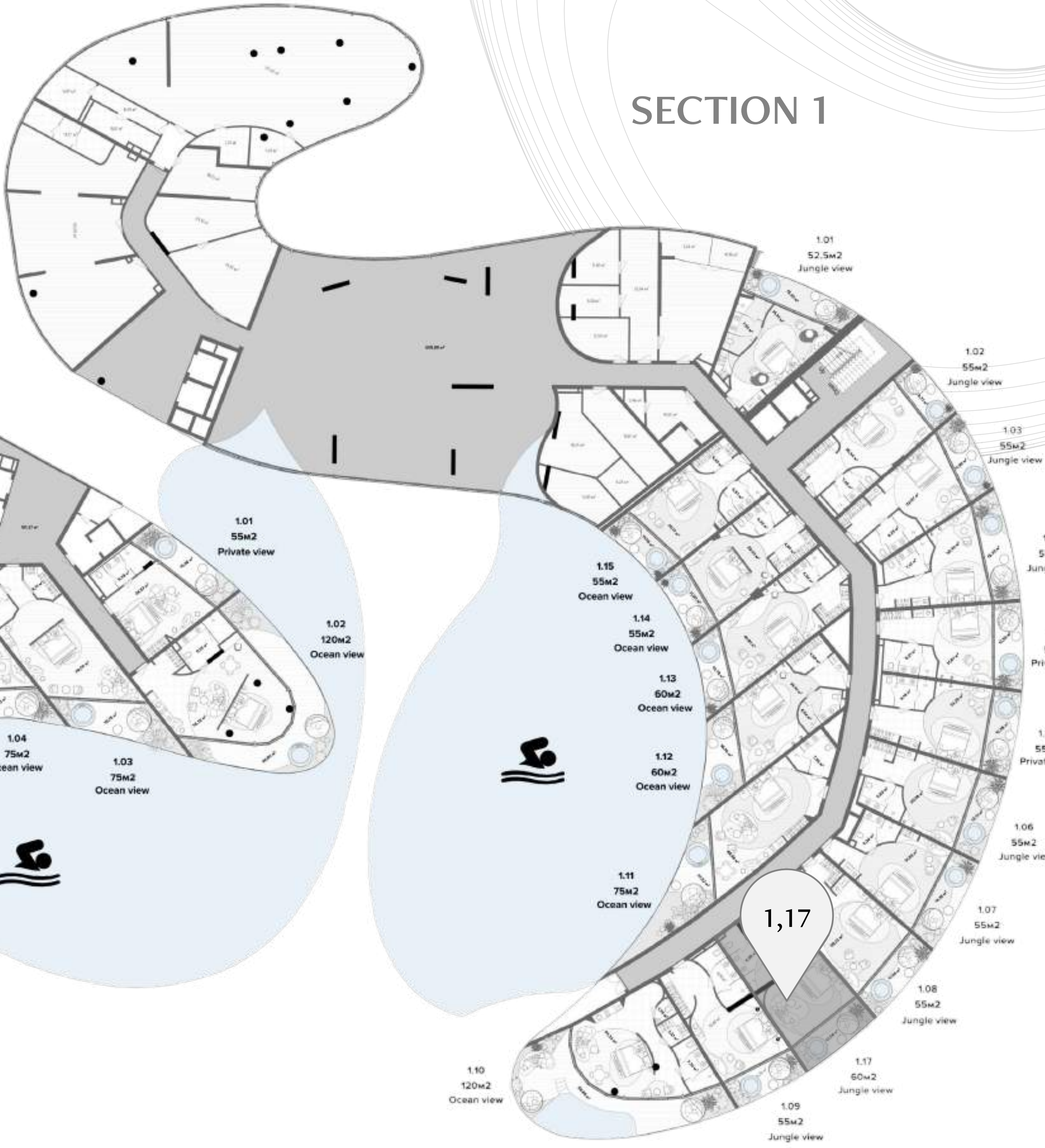
FIRST FLOOR

TYPICAL FLOOR PLAN - FIRST FLOOR

SECTION 2



SECTION 1



Disclaimer:
The floor plans, layouts, and specifications presented in this document are for illustrative purposes only and are subject to change without prior notice. All dimensions are approximate and may vary upon final construction. The developer reserves the right to modify the design, features, and specifications as deemed necessary.

The developer reserves the right to modify the design, features, and specifications as deemed necessary. This document does not constitute a legal offer, contract, or commitment of any kind. Potential buyers and investors are encouraged to conduct their own due diligence and seek independent legal and financial advice before making any purchasing decisions.



SECTION 2

UNIT NUMBER: 1,15

FIRST FLOOR

JUNGLE VIEW

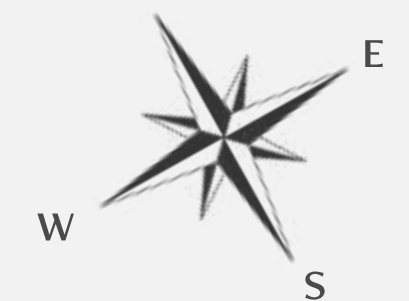
COCOON – 52.5 SQM

SPECIFICATIONS OF THE UNIT

- Dressing room
- Bathroom: double washbasin, installation (WC), shower cabin (glass screen), mirror
- Living room: bed, bathroom, sofa/couch, coffee table, armchair, chair, table (built-in, cocoon construction element), TV cabinet
- Terrace: round bath, sofa/chair, coffee table
- Equipment: TV, mini fridge
- Miscellaneous: textiles and decor elements, carpet, decorative lighting



NORTH



Disclaimer: The floor plans, layouts, and specifications presented in this document are for illustrative purposes only and are subject to change without prior notice. All dimensions are approximate and may vary upon final construction. The developer reserves the right to modify the design, features, and specifications as deemed necessary. This document does not constitute a legal offer, contract, or commitment of any kind. Potential buyers and investors are encouraged to conduct their own due diligence and seek independent legal and financial advice before making any purchasing decisions.



SECTION 2

UNIT NUMBER: 1,16

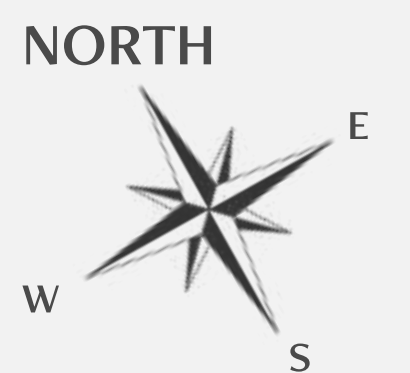
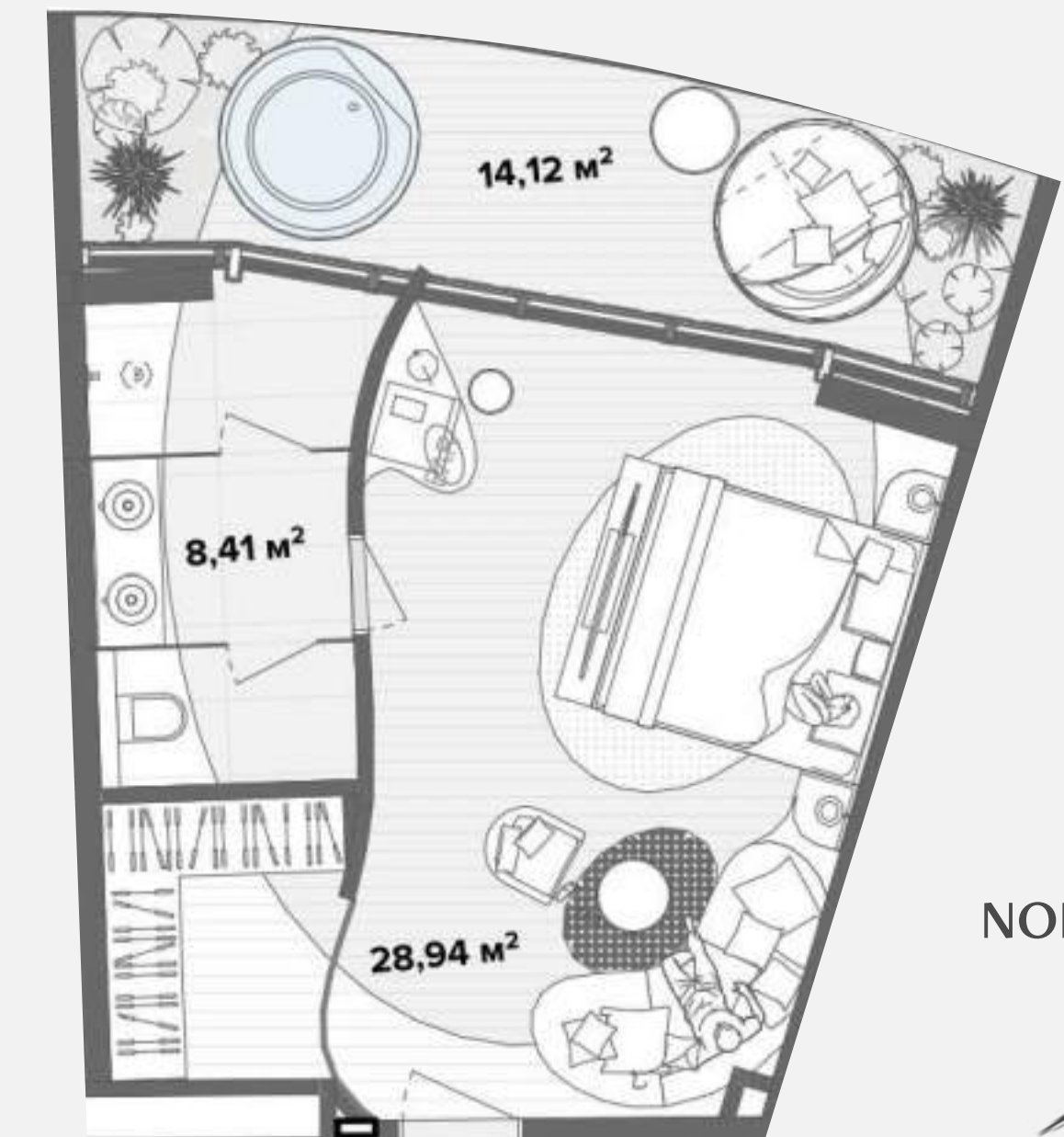
FIRST FLOOR

JUNGLE VIEW

COCOON – 55 SQM

SPECIFICATIONS OF THE UNIT

- Dressing room
- Bathroom: double washbasin, installation (WC), shower cabin (glass screen), mirror
- Living room: bed, bathroom, sofa/couch, coffee table, armchair, chair, table (built-in, cocoon construction element), TV cabinet
- Terrace: round bath, sofa/chair, coffee table
- Equipment: TV, mini fridge
- Miscellaneous: textiles and decor elements, carpet, decorative lighting



Disclaimer: The floor plans, layouts, and specifications presented in this document are for illustrative purposes only and are subject to change without prior notice. All dimensions are approximate and may vary upon final construction. The developer reserves the right to modify the design, features, and specifications as deemed necessary. This document does not constitute a legal offer, contract, or commitment of any kind. Potential buyers and investors are encouraged to conduct their own due diligence and seek independent legal and financial advice before making any purchasing decisions.



SECTION 2

UNIT NUMBER: 1,17

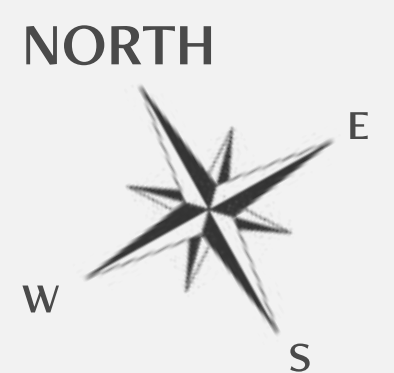
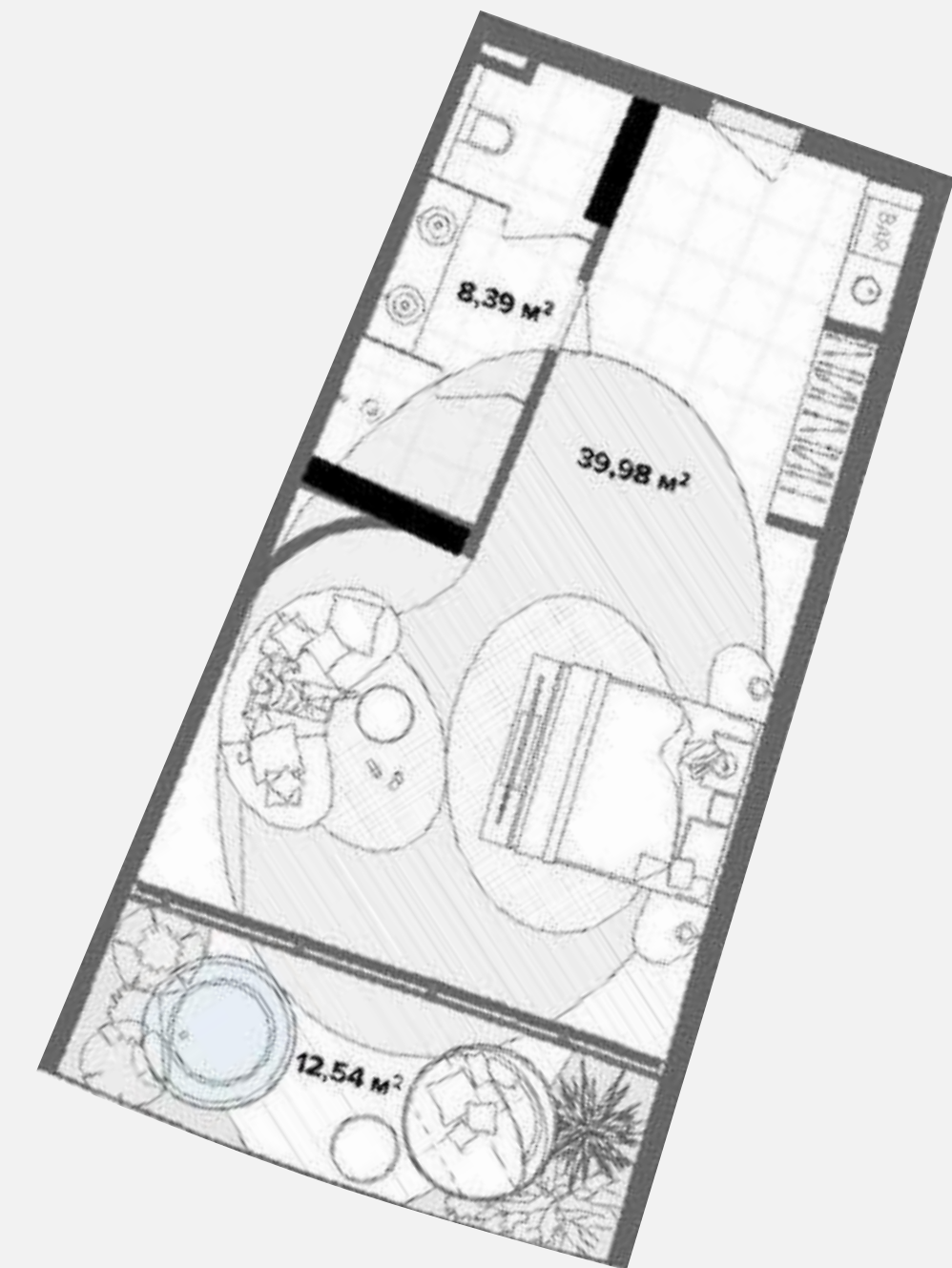
FIRST FLOOR

JUNGLE VIEW

COCOON – 60 SQM

SPECIFICATIONS OF THE UNIT

- Dressing room
- Bathroom: double washbasin, installation (WC), shower cabin (glass screen), mirror
- Living room: bed, bathroom, sofa/couch, coffee table, armchair, chair, table (built-in, cocoon construction element), TV cabinet
- Terrace: round bath, sofa/chair, coffee table
- Equipment: TV, mini fridge
- Miscellaneous: textiles and decor elements, carpet, decorative lighting

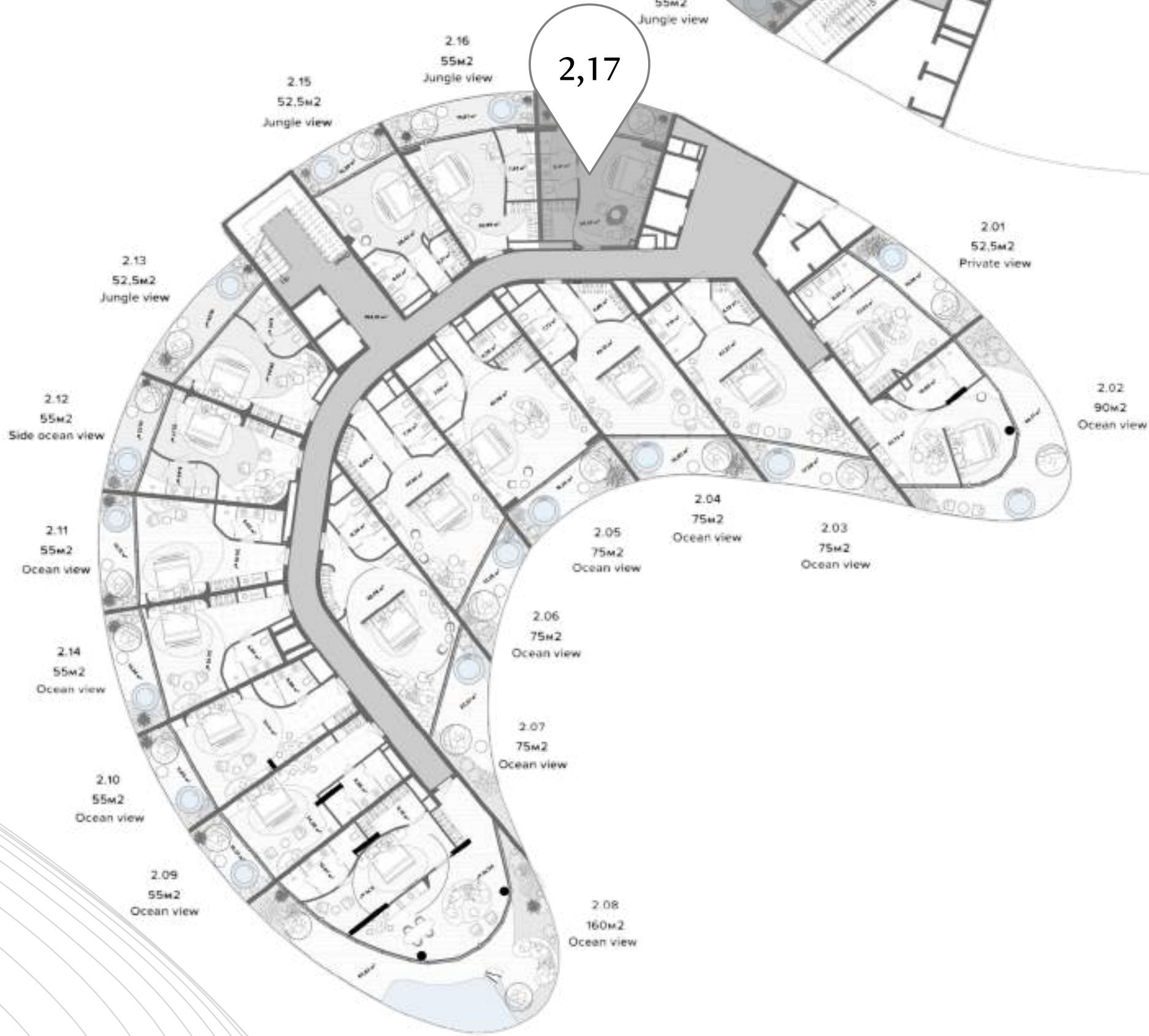


Disclaimer: The floor plans, layouts, and specifications presented in this document are for illustrative purposes only and are subject to change without prior notice. All dimensions are approximate and may vary upon final construction. The developer reserves the right to modify the design, features, and specifications as deemed necessary. This document does not constitute a legal offer, contract, or commitment of any kind. Potential buyers and investors are encouraged to conduct their own due diligence and seek independent legal and financial advice before making any purchasing decisions.

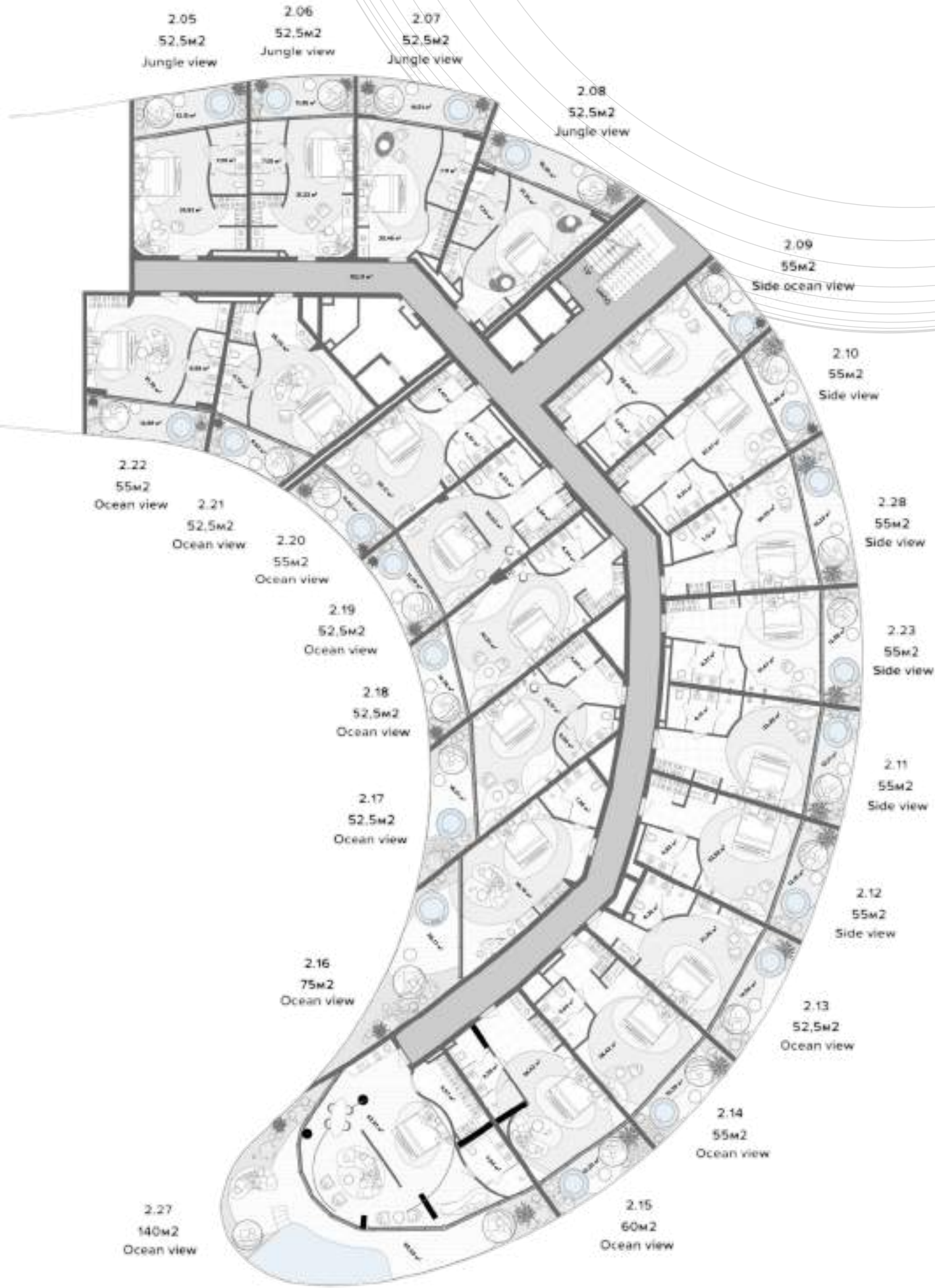
SECOND FLOOR

TYPICAL FLOOR PLAN - SECOND FLOOR

SECTION 2



SECTION 1



Disclaimer:
The floor plans, layouts, and specifications presented in this document are for illustrative purposes only and are subject to change without prior notice. All dimensions are approximate and may vary upon final construction. The developer reserves the right to modify the design, features, and specifications as deemed necessary.

The developer reserves the right to modify the design, features, and specifications as deemed necessary. This document does not constitute a legal offer, contract, or commitment of any kind. Potential buyers and investors are encouraged to conduct their own due diligence and seek independent legal and financial advice before making any purchasing decisions.



SECTION 1

UNIT NUMBER: 2,01

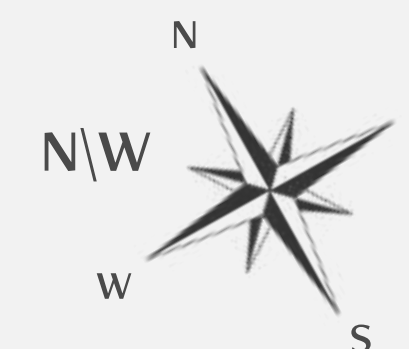
SECOND FLOOR

JUNGLE VIEW

COCOON – 52.5 SQM

SPECIFICATIONS OF THE UNIT

- Dressing room
- Bathroom: double washbasin, installation (WC), shower cabin (glass screen), mirror
- Living room: bed, bathroom, sofa/couch, coffee table, armchair, chair, table (built-in, cocoon construction element), TV cabinet
- Terrace: round bath, sofa/chair, coffee table
- Equipment: TV, mini fridge
- Miscellaneous: textiles and decor elements, carpet, decorative lighting



Disclaimer: The floor plans, layouts, and specifications presented in this document are for illustrative purposes only and are subject to change without prior notice. All dimensions are approximate and may vary upon final construction. The developer reserves the right to modify the design, features, and specifications as deemed necessary. This document does not constitute a legal offer, contract, or commitment of any kind. Potential buyers and investors are encouraged to conduct their own due diligence and seek independent legal and financial advice before making any purchasing decisions.



SECTION 1

UNIT NUMBER: 2,24

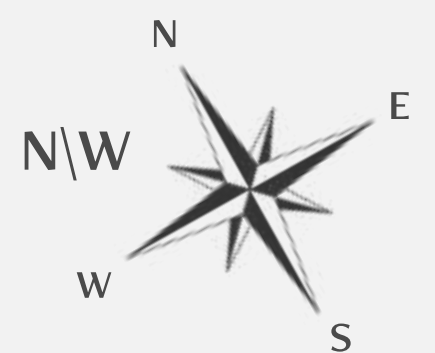
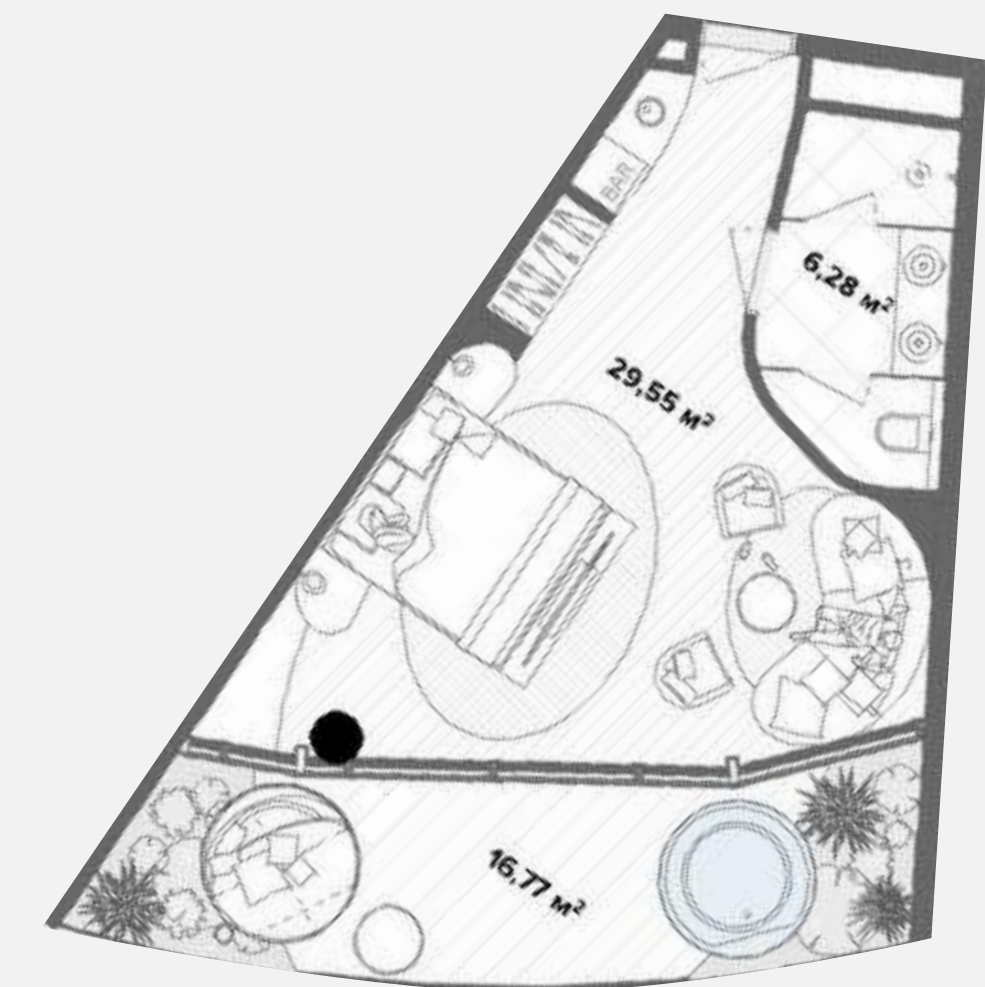
SECOND FLOOR

JUNGLE VIEW

COCOON – 55 SQM

SPECIFICATIONS OF THE UNIT

- Dressing room
- Bathroom: double washbasin, installation (WC), shower cabin (glass screen), mirror
- Living room: bed, bathroom, sofa/couch, coffee table, armchair, chair, table (built-in, cocoon construction element), TV cabinet
- Terrace: round bath, sofa/chair, coffee table
- Equipment: TV, mini fridge
- Miscellaneous: textiles and decor elements, carpet, decorative lighting



Disclaimer: The floor plans, layouts, and specifications presented in this document are for illustrative purposes only and are subject to change without prior notice. All dimensions are approximate and may vary upon final construction. The developer reserves the right to modify the design, features, and specifications as deemed necessary. This document does not constitute a legal offer, contract, or commitment of any kind. Potential buyers and investors are encouraged to conduct their own due diligence and seek independent legal and financial advice before making any purchasing decisions.



SECTION 2

UNIT NUMBER: 2,17

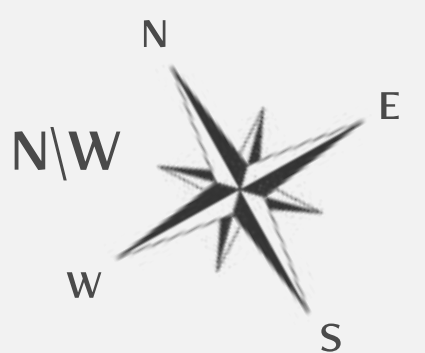
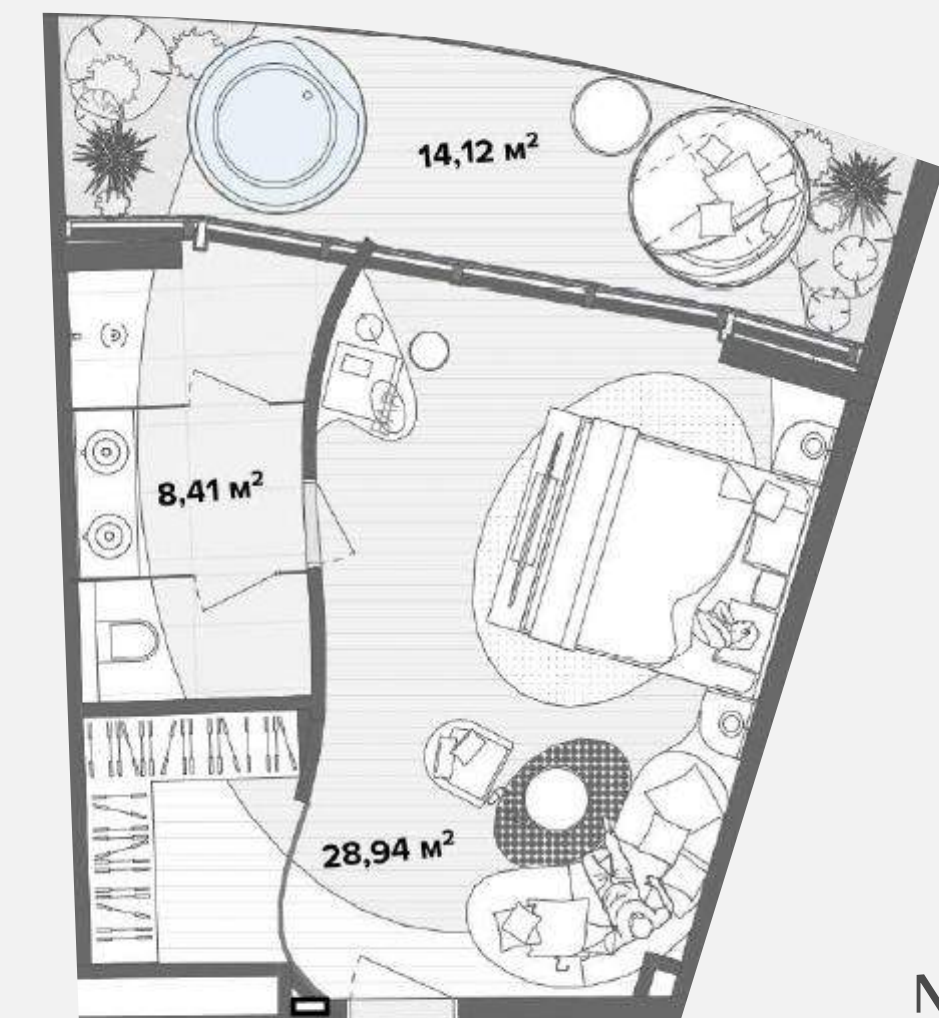
SECOND FLOOR

JUNGLE VIEW

COCOON – 55 SQM

SPECIFICATIONS OF THE UNIT

- Dressing room
- Bathroom: double washbasin, installation (WC), shower cabin (glass screen), mirror
- Living room: bed, bathroom, sofa/couch, coffee table, armchair, chair, table (built-in, cocoon construction element), TV cabinet
- Terrace: round bath, sofa/chair, coffee table
- Equipment: TV, mini fridge
- Miscellaneous: textiles and decor elements, carpet, decorative lighting



Disclaimer: The floor plans, layouts, and specifications presented in this document are for illustrative purposes only and are subject to change without prior notice. All dimensions are approximate and may vary upon final construction. The developer reserves the right to modify the design, features, and specifications as deemed necessary. This document does not constitute a legal offer, contract, or commitment of any kind. Potential buyers and investors are encouraged to conduct their own due diligence and seek independent legal and financial advice before making any purchasing decisions.



SECTION 1

UNIT NUMBER: 2,03

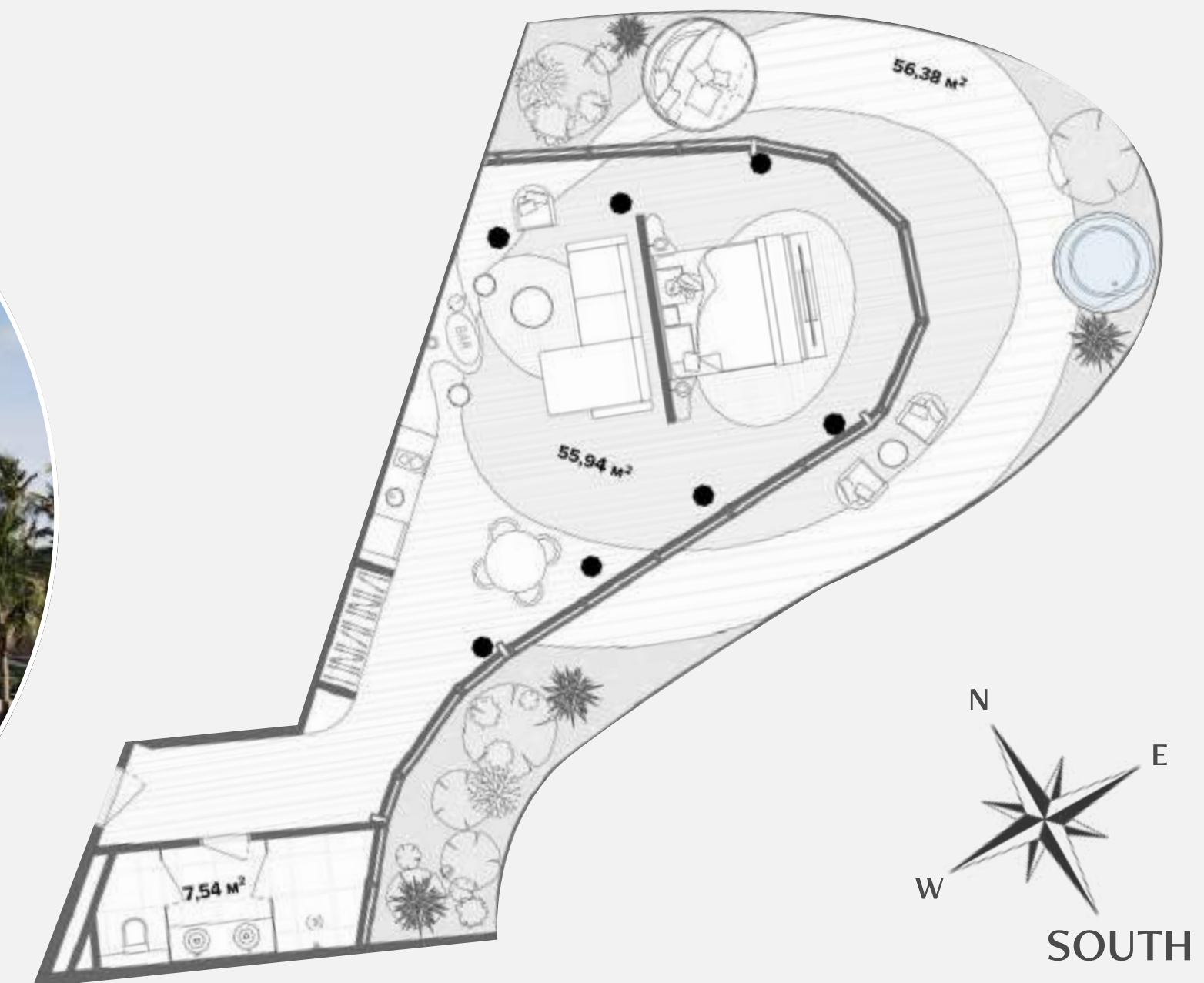
SECOND FLOOR

JUNGLE VIEW

COCOON – 120 SQM

SPECIFICATIONS OF THE UNIT

- Dressing room
- Bathroom: double washbasin, installation (WC), shower cabin (glass screen), mirror
- Living room: bed, bathroom, sofa/couch, coffee table, armchair, chair, table (built-in, cocoon construction element), TV cabinet
- Dining table for 4 people
- Table, chairs for 2 persons
- Terrace: round bath, sofa/chair, coffee table
- Equipment: TV
- Miscellaneous: textiles and decor elements, carpet, decorative lighting



Disclaimer: The floor plans, layouts, and specifications presented in this document are for illustrative purposes only and are subject to change without prior notice. All dimensions are approximate and may vary upon final construction. The developer reserves the right to modify the design, features, and specifications as deemed necessary. This document does not constitute a legal offer, contract, or commitment of any kind. Potential buyers and investors are encouraged to conduct their own due diligence and seek independent legal and financial advice before making any purchasing decisions.

THIRD FLOOR

TYPICAL FLOOR PLAN - THIRD FLOOR

SECTION 2



SECTION 1



Disclaimer:
The floor plans, layouts, and specifications presented in this document are for illustrative purposes only and are subject to change without prior notice. All dimensions are approximate and may vary upon final construction. The developer reserves the right to modify the design, features, and specifications as deemed necessary.

The developer reserves the right to modify the design, features, and specifications as deemed necessary. This document does not constitute a legal offer, contract, or commitment of any kind. Potential buyers and investors are encouraged to conduct their own due diligence and seek independent legal and financial advice before making any purchasing decisions.



SECTION 1

UNIT NUMBER: 3,09

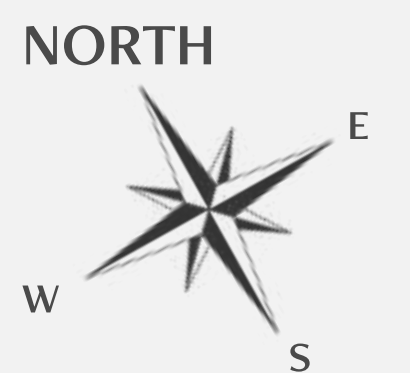
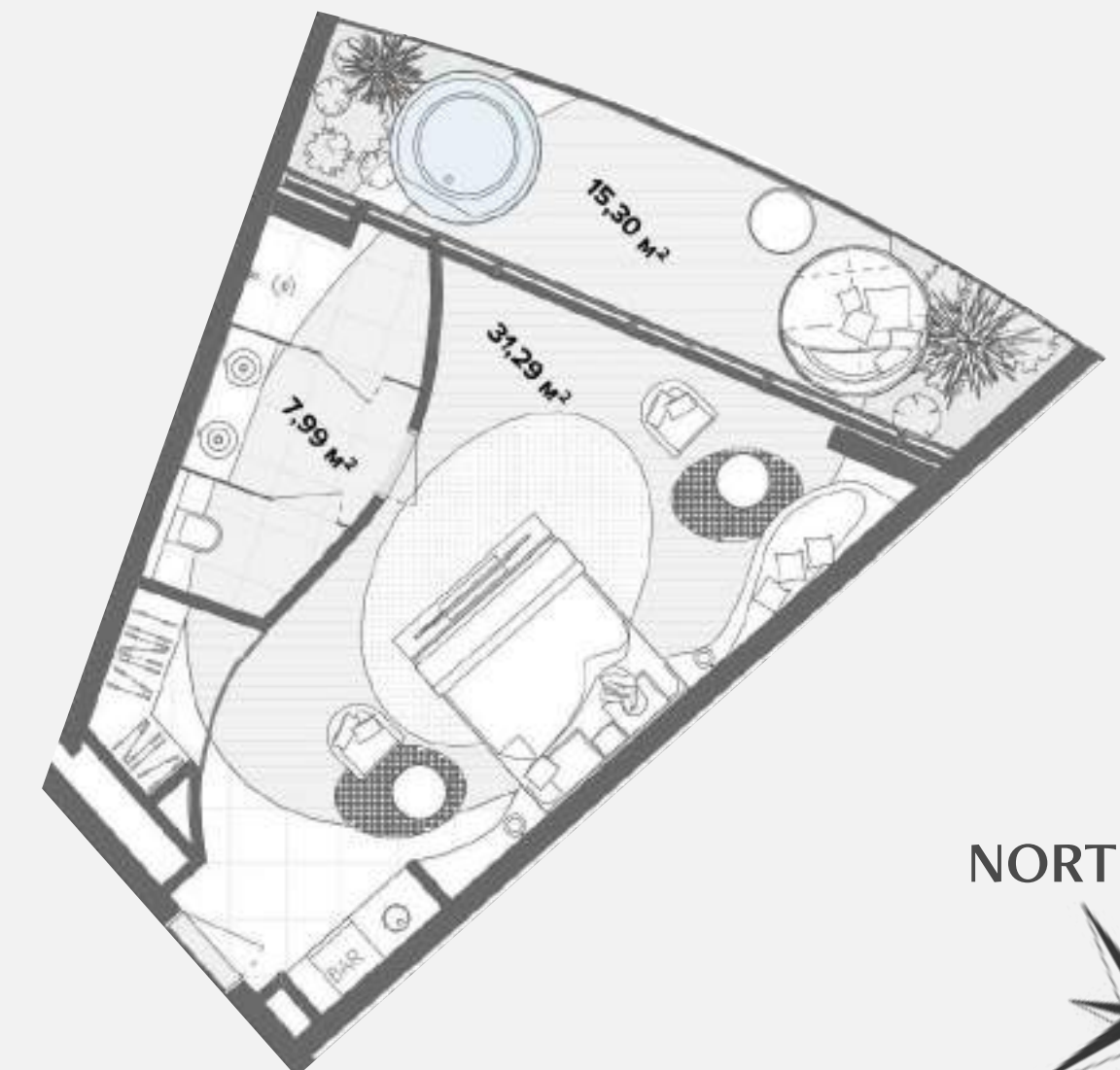
THIRD FLOOR

JUNGLE VIEW

COCOON – 55 SQM

SPECIFICATIONS OF THE UNIT

- Dressing room
- Bathroom: double washbasin, installation (WC), shower cabin (glass screen), mirror
- Living room: bed, bathroom, sofa/couch, coffee table, armchair, chair, table (built-in, cocoon construction element), TV cabinet
- Terrace: round bath, sofa/chair, coffee table
- Equipment: TV, mini fridge
- Miscellaneous: textiles and decor elements, carpet, decorative lighting



Disclaimer: The floor plans, layouts, and specifications presented in this document are for illustrative purposes only and are subject to change without prior notice. All dimensions are approximate and may vary upon final construction. The developer reserves the right to modify the design, features, and specifications as deemed necessary. This document does not constitute a legal offer, contract, or commitment of any kind. Potential buyers and investors are encouraged to conduct their own due diligence and seek independent legal and financial advice before making any purchasing decisions.



SECTION 1

UNIT NUMBER: 3,04

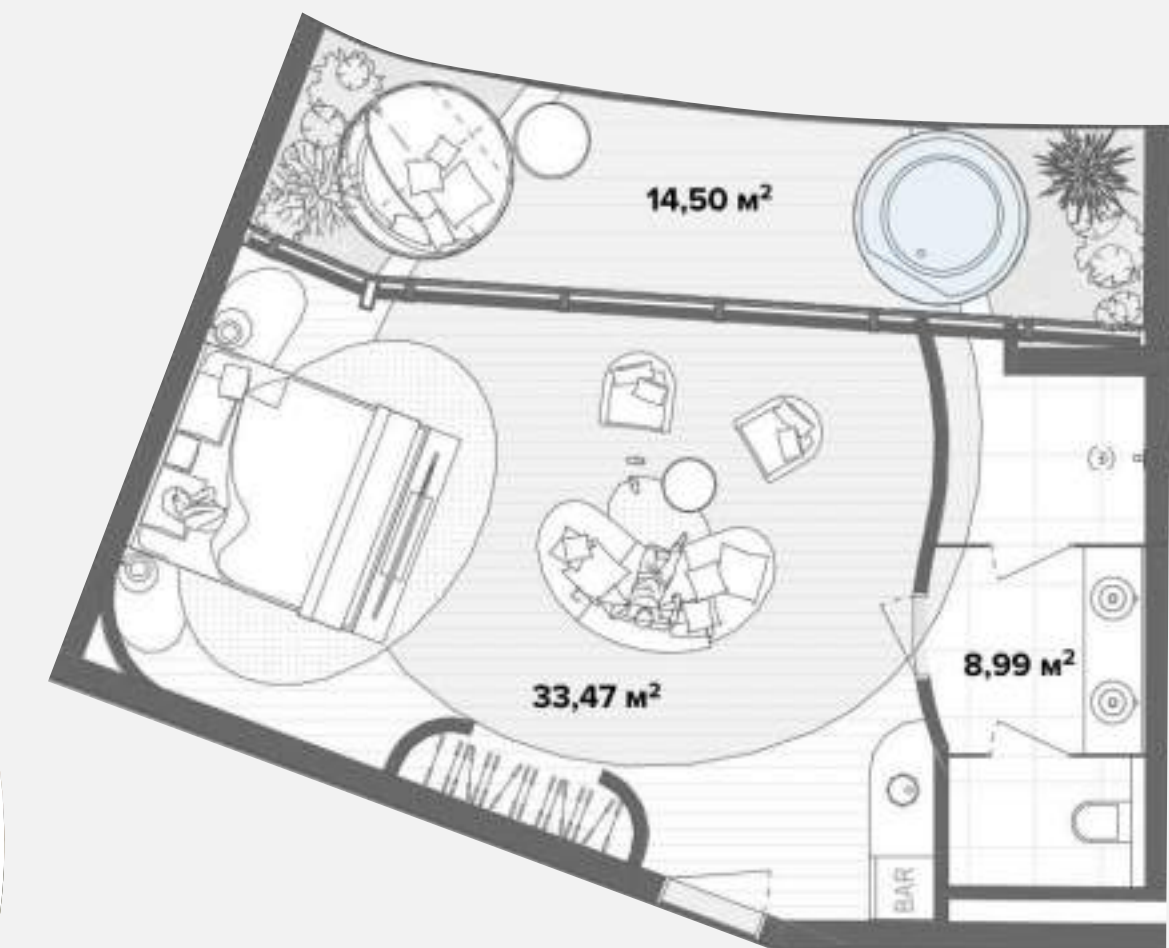
THIRD FLOOR

JUNGLE VIEW

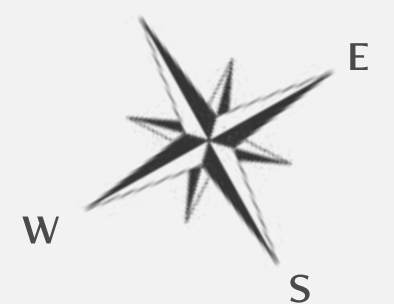
COCOON – 60 SQM

SPECIFICATIONS OF THE UNIT

- Dressing room
- Bathroom: double washbasin, installation (WC), shower cabin (glass screen), mirror
- Living room: bed, bathroom, sofa/couch, coffee table, armchair, chair, table (built-in, cocoon construction element), TV cabinet
- Terrace: round bath, sofa/chair, coffee table
- Equipment: TV, mini fridge
- Miscellaneous: textiles and decor elements, carpet, decorative lighting



NORTH



Disclaimer: The floor plans, layouts, and specifications presented in this document are for illustrative purposes only and are subject to change without prior notice. All dimensions are approximate and may vary upon final construction. The developer reserves the right to modify the design, features, and specifications as deemed necessary. This document does not constitute a legal offer, contract, or commitment of any kind. Potential buyers and investors are encouraged to conduct their own due diligence and seek independent legal and financial advice before making any purchasing decisions.



SECTION 1

UNIT NUMBER: 3,02

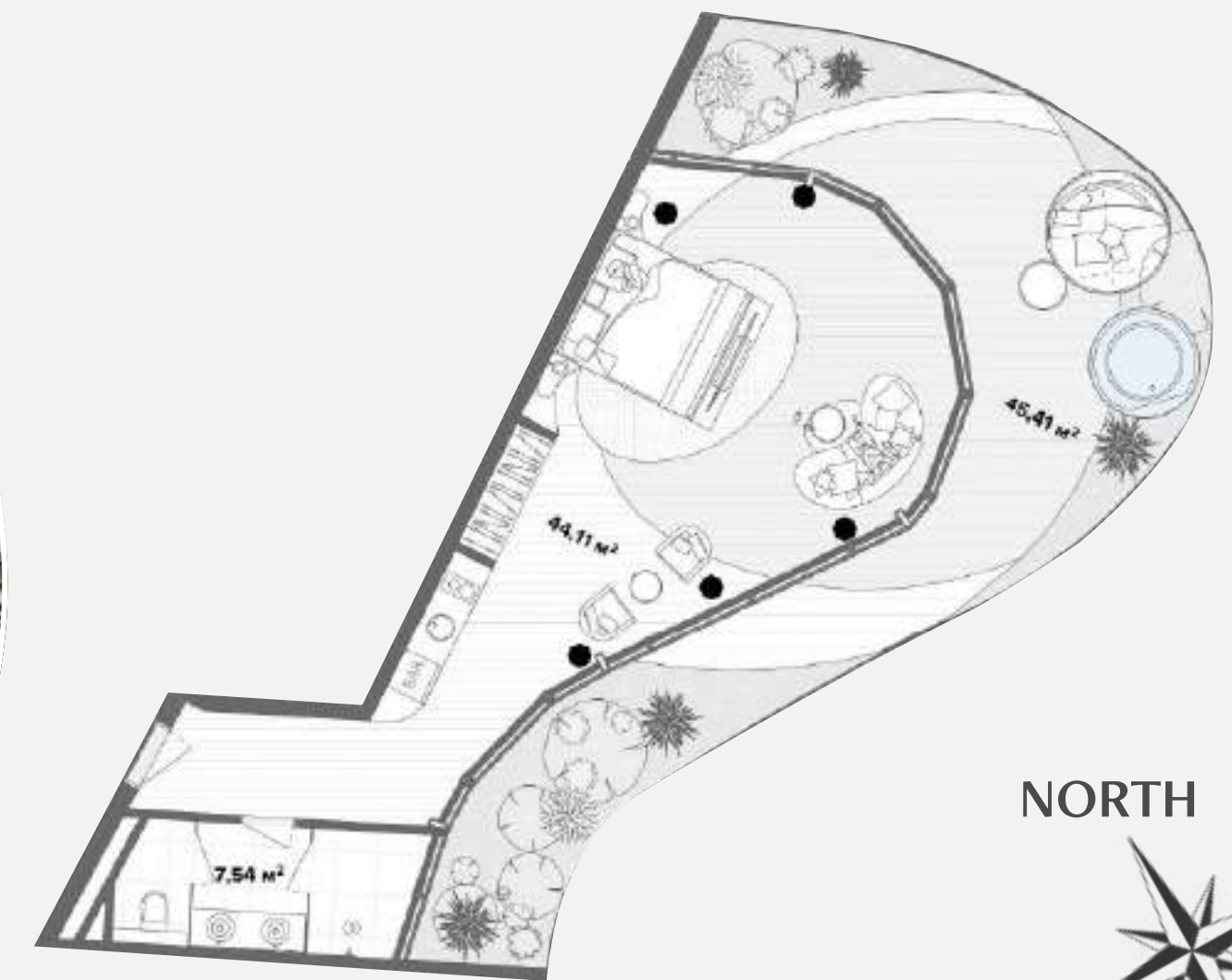
THIRD FLOOR

JUNGLE VIEW

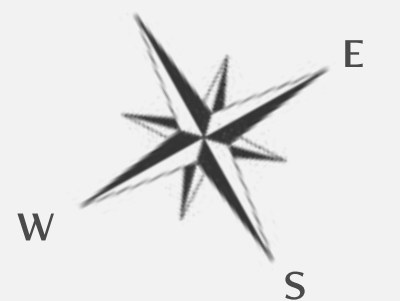
COCOON – 100 SQM

SPECIFICATIONS OF THE UNIT

- Dressing room
- Bathroom: double washbasin, installation (WC), shower cabin (glass screen), mirror
- Living room: bed, bathroom, sofa/couch, coffee table, armchair, chair, table (built-in, cocoon construction element), TV cabinet, dining table for 4 people, table, chairs for 2 persons
- Dining table for 4 people
- Terrace: round bath, sofa/chair, coffee table
- Equipment: TV
- Miscellaneous: textiles and decor elements, carpet, decorative lighting



NORTH



Disclaimer: The floor plans, layouts, and specifications presented in this document are for illustrative purposes only and are subject to change without prior notice. All dimensions are approximate and may vary upon final construction. The developer reserves the right to modify the design, features, and specifications as deemed necessary. This document does not constitute a legal offer, contract, or commitment of any kind. Potential buyers and investors are encouraged to conduct their own due diligence and seek independent legal and financial advice before making any purchasing decisions.



ANANTARA

DRAGON SESEH BALI
RESORT & RESIDENCES

