



200 N. Ozark  
Girard, KS 66743  
620.724.8235  
www.ckt.net

Presort Std.  
U.S. POSTAGE  
PAID  
Joplin, MO 64802  
Permit No. 116

AUGUST  
2024

The  
**Craw-Kan**  
Connection

AUGUST  
2024  
The  
**Craw-Kan**  
Connection



Your Community Technology Partner

Craw-Kan AUGUST 2024

#### Board of Directors

Mary Smith,  
*President*

John Lehman,  
*Vice-President*

Barry Bedene,  
*Secretary-Treasurer*

Wilda Pentola,  
*Director*

John Kovacic,  
*Director*

Terry Kunstel,  
*Director*

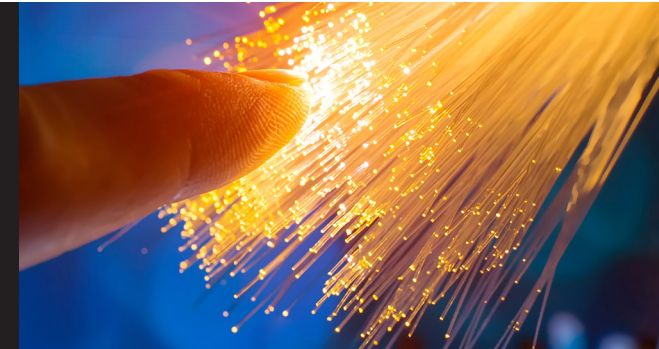
Sharon Starr,  
*Director*

Roger Doue,  
*Director*

Randy Vogts,  
*Director*

Craig Wilbert,  
*General Manager*

The Craw-Kan Connection is  
a member newsletter published by Craw-Kan.



#### this issue

Multi-Gig Internet Service! **P.1**

Craw-Kan Director Positions **P.2**

Special Olympics **P.3**

Customer Appreciation **P.4**

## New Multi-Gig Internet Service!

In 2015, our Coop became the regional leader in high speed internet by offering a 1 Gig service plan on its 100% fiber-optic network. Customer demand for speed over the past decade has only continued to increase and we are pleased to announce new plans ranging from 2 to 8 Gig. These symmetrical fiber to the home plans will make Craw-Kan one of the fastest internet providers in the nation. US households now have an average of over 25 connected devices and our gig+ technology provides the capacity to run multiple devices simultaneously with no lagging or buffering.

As always, our plans include whole home Wi-Fi and there is no cost for professional installation, no contracts, no equipment fees and no data caps or speed throttling. We are currently in the testing phase and our Gig+ internet plans will be available in selected areas in the 4th quarter of this year. Pricing will start at \$100 per month for the 2 gig service. Craw-Kan is proud to be the area's leading provider of the fastest internet around. We are different than the competition. Only Craw-Kan gives you fiber to the home technology with exceptional reliability and combines it with symmetrical upload/download speeds, straight forward pricing with no hidden fees and local customer service. Stay tuned for information regarding launch locations and full pricing detail later this year.



## Customer Appreciation is Friday, September 27th

Our annual customer appreciation day is scheduled for Friday, September 27th from 11 am - 1 pm. As a way to show our gratitude to our patrons, we would like to invite all our members to join us for lunch at our business office in Girard (200 N. Ozark). Come have lunch with us!

Find us on these  
social media sites  
for the latest news  
on your cooperative



This institution is an equal opportunity  
provider and employer.



National Do Not Call Registry

Managed by the Federal Trade Commission, the DNC registry gives you an opportunity to limit the telemarketing calls you receive. After you place your telephone number on the Registry, most telemarketers will be required to remove your number from their call lists and may not call you. However, you may still receive calls from political organizations, charities, telephone surveyors, or companies with which you have an existing business relationship.

You can register by calling toll free 1-888-382-1222 (TTY 1-866-290-4236), from the number you wish to register. You may also go to [www.donotcall.gov](http://www.donotcall.gov) if you have a working email address. Registration is free.

Pay with SmartHub

Paying bills shouldn't be a hassle. We offer more ways to pay your bill now than ever. Pay online or pay with the easy to use SmartHub app available on the Apple App Store and Google Play Store.



Craw-Kan Director Positions

Craw-Kan Telephone Cooperative has a board of nine directors each serving a three year term. Elections are staggered, according to our By-Laws whereby three director positions are up for election each year at the Craw-Kan Annual Meeting held in October. A nominating committee, appointed by the current directors in August, will meet in early September to make nominations for the three positions to be voted on at the Annual Meeting of Members in October. Voting at the Annual Meeting is by secret ballot. The By-Laws allow nominations from the floor of the Annual Meeting and any member desiring to vote for a candidate nominated from the floor at the meeting shall write in the name of such candidate beneath the candidates nominated by the committee. Each voting member of the Cooperative present in person at the meeting shall be entitled to vote for three candidates. The three candidates receiving the highest number of votes at such meeting shall be declared elected as Directors. For more detailed information on the election of Directors see Article IV of the By-Laws in the front of the Directory.

The Craw-Kan By-Laws state in Section 4.3 “Any member shall be eligible to be nominated, elected and remain a Director of cooperative who:

- Resides in the geographic area served by the Cooperative.
- Is not an employee of cooperative or in any way financially interested in a competing enterprise or a business engaged in selling communication services or communication supplies or maintaining communication facilities. However, the Board may grant exceptions for ‘de minimus’ competing enterprises.
- Is not closely related to an incumbent Director or an employee of the Cooperative.
- Whose election would not establish a majority of directors to represent any one exchange area.
- Whose election would not establish a majority of more than one director to represent either the rural or urban areas.

If you would be interested in having the nominating committee consider you for nomination, your application will be presented to the nomination committee. Please send the following information to the General Manager, P.O. Box 100, Girard, KS 66743 **no later than September 17, 2024:**

Information Required:

Name, address and telephone number.  
Work experience.  
Short paragraph stating why you would be interested in being a director.

Local Service Rates For Telephone Service

Craw-Kan Telephone Cooperative, Inc. is a telecommunications provider who provides basic and enhanced services within its service territory. Basic services are offered at various rates depending on the state and location where you receive service. Customers have access to long distance, directory assistance, and operator service providers of their choice, at rates established by those carriers. Emergency 911 Services are provided and a surcharge is assessed at governmental rates. If you have any questions regarding the Company's services you can visit the business office located at: 200 N. Ozark St., Girard, KS 66743 or by calling 800-362-0316.



Getting Involved with Special Olympics

Craw-Kan employees have been busy providing hot and fresh meals for events with our friends at Southeast Kansas Special Olympics. So far, in the first six events of the year, we were able to provide a total of almost 2,000 meals for our local athletes.

We’ve been involved with several events, the most recent being a state level dance for athletes from eight years old and up. We will co-host a Special Olympics Prom as well as helping with the annual Polar Plunge and other events during the year.

Craw-Kan graciously accepted the Southeast Region Organization of the Year award for our volunteer work with the Southeast Region. We are SO EXCITED for our partnership with Special Olympics Kansas and cannot wait to support our athletes for years to come!

Go Paperless in September and Save!

Switch to paperless billing in September and receive a \$5 credit on your next bill.  
*This offer is good for first-time sign-ups completed by the end of September 2024.*

Fiber-to-the-Home Update

Construction crews have got the Colony exchange about 75% plowed with over 50 customers already cut over to fiber. We expect to wrap this project up by the end of the year.

The Missouri exchanges of Amsterdam and Amoret were completed earlier this year and the Foster exchange is nearing completion.

Lifeline

You may be eligible to receive a discount on your monthly local telephone bill through the Lifeline Program. You are eligible if you receive any of the following: Food Stamps, Supplemental Security Income (SSI), Medicaid, Veterans Pension of Survivors Benefit Programs, Food Distribution Program on Indian Reservations, Federal Public Housing Assistance, Bureau of Indian Affairs General Assistance, Tribally Administered Temporary Assistance for Needy Families, & Tribal Head Start (only those meeting its income qualifying standard). For more information about the Lifeline Program, call your local telephone service provider. Craw-Kan Telephone Cooperative, Inc. customers may call 800-362-0316.

Call Before You Dig

Kansas 800-344-7233  
Missouri 800-344-7483  
Oklahoma 800-362-0318

