



All Rights Reserved

Materials and specifications are subject to change without notice.
Featured machines in photos may include additional equipment.
See your XCMG dealer for available options.



XE210WB

Hydraulic Excavator



www.xcmg.com

XCMG Regional Departments:

Europe	(+86-516) 87739703 87739218 87739537	Africa	(+86-516) 87735009 87739222 87739283
West Asia & North Africa	(+86-516) 87739702 87739202 87739223	Central Asia	(+86-516) 87739236 87739239 87739538
Asia-Pacific	(+86-516) 87739128 87739500 87739529	America	(+86-516) 87739285 87739551 87739710

XUZHOU CONSTRUCTION MACHINERY GROUP IMP. & EXP. CO., LTD

Add: No.1, Tuolanshan Road, Xuzhou Economic Developing Zone, Jiangsu, China 221004

Fax: (+86-516) 87739230

E-mail: export@xcmg.com

Advanced Configuration

Ecological and economical

- ▶ The in-line, water-cooled, high-pressure, and common rail engine can meet the National Stage III Emission Standard
- ▶ The excellent matching of hydraulic system and engine is more powerful and fuel saving
- ▶ Lower noise makes you more comfortable.

Multiple applications

- ▶ Two-piece boom working device maximizes the utilization rate of equipment
- ▶ With high/low/slow gears provided, the vehicle can adapt to complex terrain with its super high traction
- ▶ Multiple additional configurations meet a variety of operating requirements

Intelligent Control

- ▶ Integrated control panel and large display screen provide multiple information
- ▶ Constant-speed cruise control reduces driving fatigue
- ▶ Undercarriage system with modular design improves vehicle's adaptability.

Comfortable operating experience

- ▶ The HVAC ensures the appropriate temperature
- ▶ Toughened glass cockpit with good safety view
- ▶ Detailed design concept improves comfort



Excellent after-sales service

- ▶ Global after-sales service system and quick response mechanism
- ▶ Real-time technical consultation and maintenance

Convenient maintenance

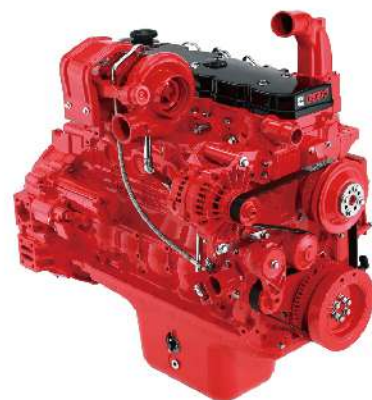
- ▶ Easy maintenance design, open the engine hood for no dead angle maintenance
- ▶ Electrically centralized lubrication makes daily maintenance easier

Safe and durable

- ▶ Forging technology are adopted in key positions
- ▶ Integrated electrical system runs reliably
- ▶ Waterproofing electrical plug-in components
- ▶ D-shaped frame and chassis reduce deformation

Ecological And Economical

- ▶ Equipped with a high-efficiency direct injection engine, it is designed to use the in-cylinder direct injection technology to make the fuel burn more fully and meet the environmental emission requirements without using exhaust gas recirculation (EGR) and aftertreatment (DPF). The overall cylinder displacement is increased, the friction power is lost, the structure is stronger and the noise is lower. Continuous and stable power output can be achieved at low speeds. Powerful torque meets hydraulic system requirements and enables faster duty cycles.
- ▶ The improved new-generation hydraulic system can take full use of the engine power, as well as improve the maneuverability and operational response speed, to achieve higher operational efficiency and operation security.
- ▶ The medium wheeled excavator comes standard with an automatic idle speed function that saves fuel.
- ▶ The use of a high static pressure low speed fan reduces additional fuel consumption and noise levels while improving cooling performance.



Comfortable And Reliable

- ▶ The newly designed cab enjoys a huge view and lower noise. In the cab, seats can be slid all around and be adjusted to a comfortable position relative to the joysticks and foot pedal. Integrated control panel, 8-inch large display screen, enlarged skylight and sun shade, comfortable foot pedal, easy-to-clean footpads, multiple storage boxes, heat/cold storage boxes, and adjustable steering column form a control environment that conforms to ergonomics. The air conditioning control system allows the operator to feel comfortable while working for hours.



- ▶ Adopt the dozer blade that can move in parallel and the assistant stabilizing outrigger to improve the stability of the machine support. The outrigger and dozer blade in contact with the ground are carefully designed to prevent damage to the asphalt pavement. The support of the contact surface is enlarged to further reduce the bearing pressure of the ground.



- ▶ The advanced wheel brake system makes the machine brake more effectively. It eliminates the rocking effect of the machine on the wheels when excavating. The transmission and axle integrated braking system can ensure the safety and meanwhile minimize the vibration of the whole machine, and effectively improve the braking stability.
- ▶ With high-sensitivity operation switches and buttons, it is easy to read the instrument information clearly, and it can work freely with the simplest control. Even carefully following the switch and the frequency they use, it is convenient for the operator to touch but does not affect the operation.



Intelligent Control

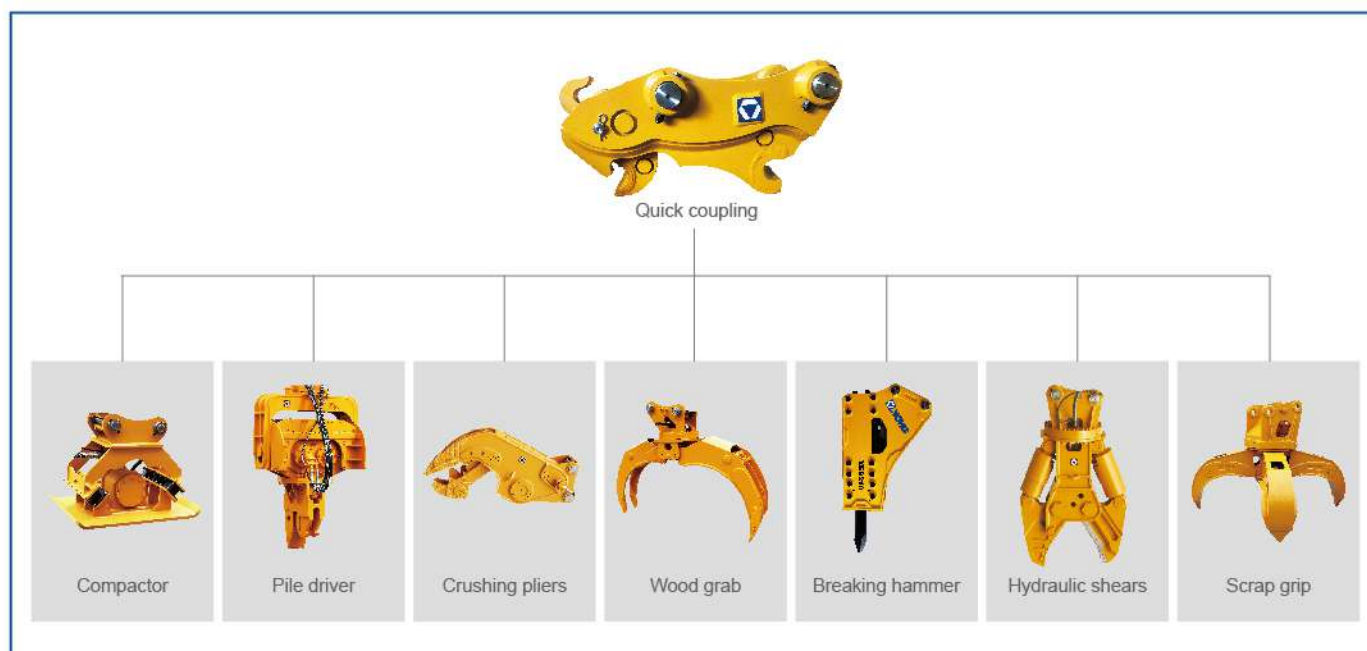
- ▶ The user can select the configuration of the rear view camera, so that the surrounding situation can be observed more intuitively. The large-size omni-directional rear view mirror under standard configuration meets the safety requirements of the operation.
- ▶ Adopting the advanced "power-shift" power shift transmission of Eff, Germany, with high speed and slow speed modes.

- ▶ The integrated function button and rocker switch adopt humanized light transparent design and can operate safely in dark environment.
- ▶ Undercarriage system with modular design: It can satisfy customer's different configurations of bucket storage rack, auxiliary outrigger, and dozer blades, meet customer's customized demands, and improve vehicle's adaptability.



Multiple Applications

- ▶ With first-rate digging force, the machine can be fully competent under complicated working conditions.;
- ▶ Production efficiency: Two-piece boom and a variety of optional attachments can maximize the utilization rate of equipment;
- ▶ Excellent driving performance: With high/low/slow gears provided, the vehicle can adapt to complex terrain with its super high traction;
- ▶ Size: Ideal size and working range can meet transportation, driving, and construction requirements;



Maintenance And Service

- ▶ Easy maintenance: All kinds of maintenance filters are accessible on ground level.
- ▶ Large handrails and anti-skid measures make the maintenance of engine compartment safer and more convenient.
- ▶ The radiator and filter are easy to clean and replace due to their locations.
- ▶ Diesel filling pump makes it more convenient to fill daily fuel.
- ▶ Electrically centralized lubrication makes daily maintenance easier and more convenient.
- ▶ A wide range of after-sales service system, quick-response rescue mechanism to ensure that you use at ease



With its excellent stability, high mobility, first-class digging force and two kinds of working equipment options (single and double boom), XE210WB wheel hydraulic excavator is strong enough to cope with a variety of working environments. By applying a series of new technologies and multiple functions, the product can guarantee customers' comprehensive benefits and low use costs. Along with the self-developed intelligent control system of multi-functional attachments, the machine can perform multiple operations, including crushing, shearing, cleaning, compacting, milling and planning, pushing, clamping, grasping, scraping, loosening and lifting. It is widely used in the earthwork construction of city water, municipal engineering, pipeline maintenance engineering, civil engineering, industrial material loading and unloading, tunnel excavating, water conservancy engineering, urban demolition and relocation.



Standard Configuration

	Name of equipment	XE210WB
Engine	Engine model	QSB7
	Emission level	National III
	Automatic preheating	
	Oil-water separator with water level indication sensor	
	Radial seal air cleaner	
	Air prefilter	
	Fuel marker	
	Fuel breather valve	
	Air pressure difference indicator	
	Automatic idle speed	
Hydraulic system	Boom/arm flow regeneration	
	Auxiliary hydraulic valve	
	Reverse rotation damping valve	
	Automatic rotation parking brake	
	Hydraulic buffer valve	
	Boom priority valve	
	Rotary logic valve	
	Hydraulic oil ISO VG 46	
	Rotary anti-sway valve	
	Gauge pressure monitoring	
Cab and interior trim	Fully adjustable mechanical suspension seat	
	Adjustable seat armrest	
	Seat belt (51 mm [2 "] wide)	
	Openable windscreen with auxiliary device	
	Front windshield divided by 70/30 ratio	
	Double laminated windshield and other toughened windows	

	Sliding door upper window
	Bi-directional air outlet air conditioner with defroster (automatic type) (pressurization function)
	Color liquid crystal display capable of displaying warning information, filter / liquid replacement information and working hours
	Control handle
	Travel control pedal with detachable manual control lever
	Two stereo speakers
	Beverage cup holder
	Coat and hat hook
	Cleanable floor mat
	Air conditioning system
	High and low gears shift
	One-key boost mode
	Top sunroof
Cab and interior trim	Intermittent multi-gear wiper
	Cup holder/envelope
	Cold and warm storage box
	Radio receiver
	Safety and security configuration
	Driving door locks and cabin locks
	Alarm horn
	Isolation plate between engine and oil pump chamber
	Rear window emergency exit
	Battery circuit breaker
	Boom and arm retaining valve
	Explosion-proof valve for boom and arm pipeline
	Overheat alarm
	Safety handrails and pedals
	Rotary alarm lamp

	Anti-skid plate/anti-skid paste
	Hydraulic safety locking lever
	Emergency escape hammer
Cab and interior trim	Left and right rearview mirrors
	Counterweight mirror
	Buzzer
	Power-shift power shift transmission
	Tire fender
Chassis system and shield	Undercarrige traction ring
	Bulldozer
	Bucket placement rack
	Auxiliary leg
	Double tire
Equipment	Boom 5.7m
	Arm 2.9 m
	Bucket 0.86M3 Strengthened Bucket
	Battery (2×850CCA)
	70A alternator
Electrical system	7.8 kW starter motor
	Travel alarm
	24V cigarette lighter
	5V USB interface
Lighting lamp	Right and left boom work lights
	Cab interior lighting
	Right side work light mounted on the storage box

Optional Configuration	
	Name of equipment XE210WB
Engine	Oil-water separator with heater (24V)
	Oil water quick release device
	Fuel filling pump 50L / min
Hydraulic system	Hydraulic oil ISO VG 32, 68
	Hydraulic pipeline: breaking hammer
	Air suspension seat with cushion heating
	Retractable seat belt (51 mm [2 "] wide)
	Vehicle mounted oxygen supply device
Cab and interior trim	Fire extinguisher
	Safety and security configuration
	Engine Emergency Stop Switch
	Counterweight rearview mirror
	Roll over protective structure (ROPS)
	Quick coupler
	Hydraulic breaker
	Hydraulic thumb pliers
	Ripper
	Vibratory plate compactor
Equipment	Hydraulic shear
	Grapples
	High frequency crusher
	Clamshell bucket
	Scrap grapple
	Screening bucket
	Pipe grab
	camera

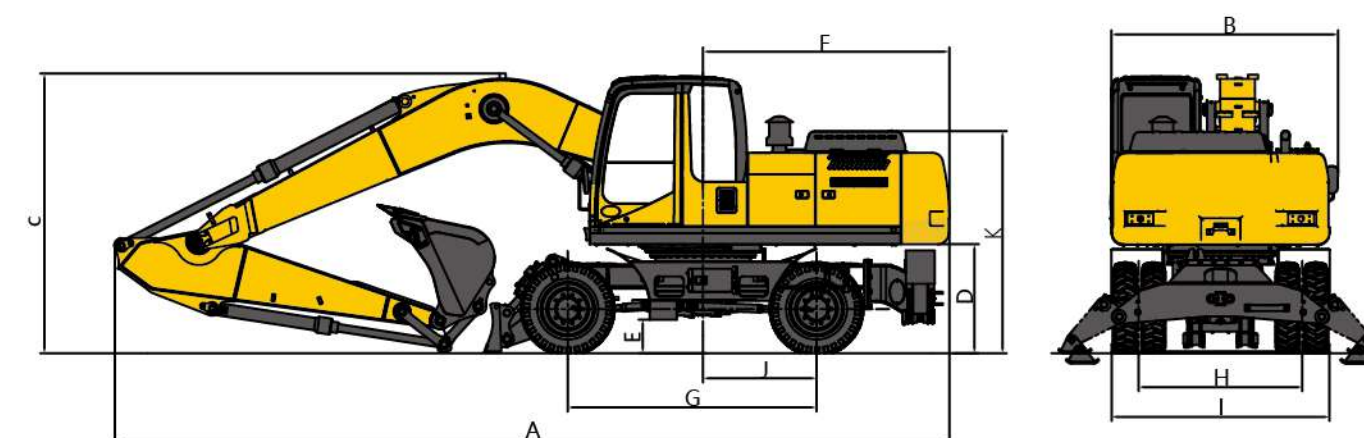
Main Specifications

Item	unit	Main specifications
Model	/	XE210WB
Operating Weight	Kg	20500
Bucket Capacity	m ³	0.86
Engine	Model	CUMMINS QSB7
	Direct injection	√
	Four strokes	√
	Water cooling	√
	Turbocharging	√
	Air-to-air intercooler	√
	No.of cylinders	6
	Rated power/speed	kw/rpm
	Maximum torque/speed	N.m/rpm
	Displacement	L
Main Performance	Travel speed(H/L)	km/h
	Swing speed	r/min
	Gradeability	°
	Ground pressure	kPa
	Bucket digging force	kN
Hydraulic system	Arm digging force	kN
	Main pump	/
	Rated flow of main pump	L/min
	Main safety valve pressure	MPa
	Travel system pressure	MPa
	Swing system pressure	MPa
	Pilot system pressure	MPa

Item	unit	Main specifications
Oil Capacity	Fuel tank capacity	L
	Hydraulic tank capacity	L
	Engine oil capacity	L
Standard	Length of boom	mm
	Length of arm	mm
	Bucket capacity	m ³

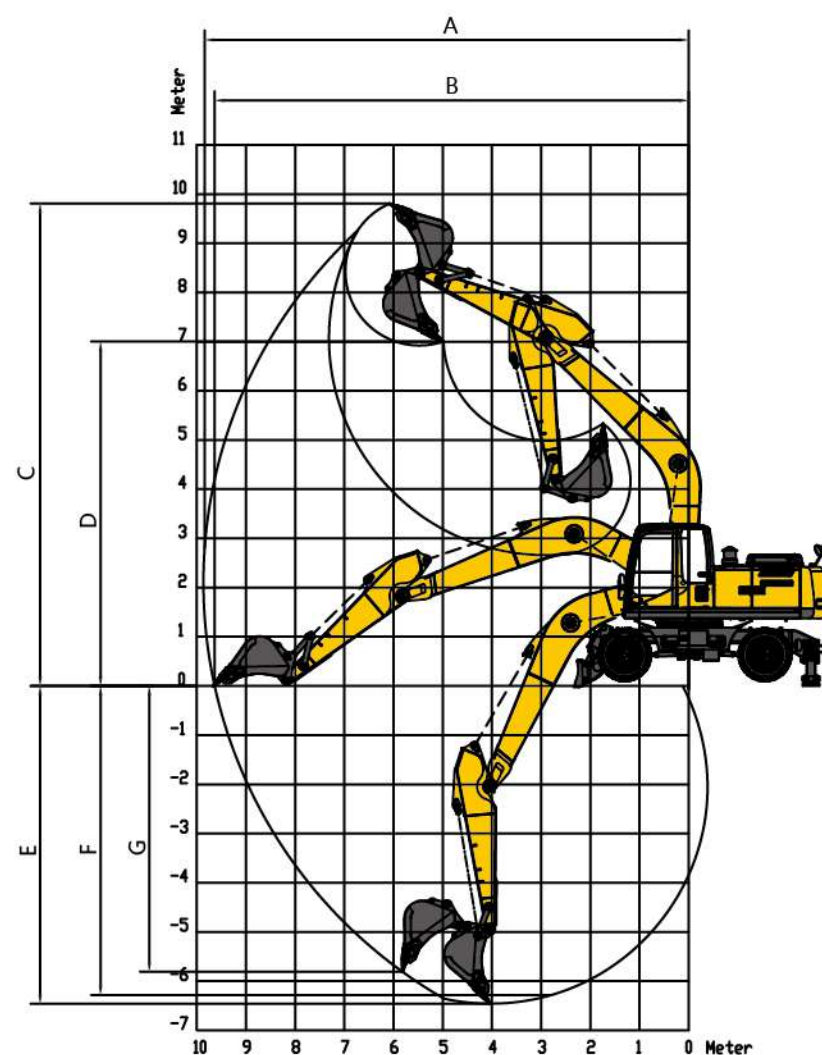
Dimensions

Item	Unit	Parameters
A Overall length	mm	9597
B Overall width	mm	2552
C Overall height	mm	3590
D Width of platform	mm	2490
E Length of crawler	mm	/
F Total width of chassis	mm	2495
G Width of crawler	mm	/
H Wheel base of crawler	mm	/
I Track gauge	mm	/
J Ground clearance of counterweight	mm	1250



Working Range

	Item	Unit	Parameters
Working scope	A Max. digging height	mm	9000
	B Max. dumping height	mm	7000
	C Max. digging depth	mm	6460
	D Maximum depth cut for 2240mm(8 ft) level bottom	mm	6285
	E Max. vertical wall digging depth	mm	5810
	F Max. digging radius	mm	9840
	G Min. swing radius	mm	2820



Lifting capacity

Lifting point height (m)	Rated lift capacity – Straight ahead (back) (kg)						Rated lift capacity – over-side (kg)					
	Lifting point radius (m)					Lifting capacity at maximum radius	Lifting point radius (m)					Lifting capacity at maximum radius
	1	2	3	4	5		1	2	3	4	5	
5			*1613			*1615			*1613			*1615
4			*1795	*1732		*1504			*1795	*1732		*1504
3			*2214	*1911		*1490			*2214	*1911		*1490
2			*2864	*2280	*1923	*1547			*2864	2096	1514	*1547
1			*3312	*2442	*2020	*1653			3129	2040	1489	*1653
Ground			*3513	*2586	*2076	*1874			3071	2001	1471	*1874
-1		*4283	*3460	*2580		*2158		*4283	3056	1987		*2158
-2		*4335	*3110			*2266		*4335	3076			*2266
-3		*15878				*2322		6722				*2322

Capacities marked with an asterisk(*) are limited by hydraulic capacities.