

ANNUAL REPORT 2014



L. Amanda Phillips
Secretary Treasurer
Land Manager

EDWARD WISNER DONATION ADVISORY COMMITTEE



Bayou Segnette Area—Jefferson Parish
December 16, 2014
Photo Courtesy of L. Amanda Phillips



Jefferson Parish Camp
J-315

TABLE OF CONTENTS

Letter from the Secretary Treasurer	4
History of the Edward Wisner Donation	5
Restoration and Protection Projects	6
Revenues and Expenses	13
New Projects and Changes in 2014	15
Edward Wisner Donation Trust Fund	19
Office and Other Pending Issues	19
Litigation	20
BP Deepwater Horizon Macondo 252 Spill	21
Wisner Beach	23
Campsite, Hunting, Trapping, Fishing and Oyster Leases	24
2015 Goals	27
Primary Revenue Breakdown 2010-2014	28
Actual Expenses 2010-2014	29
BP Reimbursements and Expenses 2014	30
Estimated BP Reimbursements and Expenses 2015	31
2015 Estimated Income	32
2015 Approved Budget	34
Revised 2015 Meeting Schedule	36
Board Members	37
Figure 1— Wisner Donation Properties	3
Figure 2— Fallen Cypress Tree—Bayou Segnette	4
Figure 3— CAM I Project Construction	5
Figure 4— Boudin Bags at the Foot of HWY 3090	6
Figure 5— Volunteers Planting the GeoTubes	6
Figure 6— NSU GLPC Volunteer Planting	6
Figure 7— NSU GLPC Volunteer Planting	6
Figure 8— Aerial View from the East of Belle Pass, the Start of CAM I Project	7
Figure 9— Aerial View from the West of Belle Pass and the CAM I Project	7
Figure 10— Plat for Caminada Headlands BA-143	7
Figure 11— Aerial View from the West of the End of CAM I and the CAM II Project Area	8
Figure 12— BELL Students at CRCL Volunteer Planting Event on CAM I Area	8
Figure 13— BELL Student and CRCL Volunteer Planting on CAM I Area	8
Figure 14— Plat for BA-171 Project	9
Figure 15— Plat for West Fourchon Marsh Creation and Marsh Nourishment Project	9
Figure 16— Plat for BBBS Project	9
Figure 17— Plat for East Leeville Marsh Creation Project	10
Figure 18— Caminada Back Barrier Marsh Creation #2	10
Figure 19— Aerial View of Broken Marsh	10

TABLE OF CONTENTS, cont.

Figure 20— Aerial View of Marsh Platform	11
Figure 21— Marsh Platform	11
Figure 22— Dunes Created with Hay Bales	11
Figure 23— Litter Abatement Program	12
Figure 24— Mitigation Areas A, B, C and the Maritime Ridge	12
Figure 25— CWPPRA Airboat Flotilla	12
Figure 26—Total Royalty Revenue Compared to Total Revenue	13
Figure 27—Total GLPC Revenue Compared to Total Revenue	13
Figure 28— <i>Bitter Panicum</i> and Dibble	14
Figure 29— Total Expenses Compared to Total Revenues	14
Figure 30— Bayou Segnette, Jefferson Parish	15
Figure 31— Bayou Segnette, Jefferson Parish	15
Figure 32— Bridge to Fourchon Island	15
Figure 33— Boat Graveyard	16
Figure 34— Lighted Buoy	16
Figure 35— Black Mangrove Stand and its Woody Roots	16
Figure 36— Forrest Travirca and the Beach Crest Height	17
Figure 37— Beach Sweep at Breach 1	17
Figure 38— Lafourche Parish Camps, Canal 3	18
Figure 39— St. John the Baptist Parish	18
Figure 40— Average Price per Barrel of Oil	18
Figure 41— City's Wisner Revenue 2005-2014	19
Figure 42— Boat Graveyard	19
Figure 43— Juvenile Wilson Plover	20
Figure 44— Oil Monitoring Wells—Breach 1	21
Figure 45— Escarpment from Mat Removal—Zone 2	21
Figure 46— Signs on CAM I Area	23
Figure 47— Least Terns and Wilson Plovers Feeding in the Surf	23
Figure 48— Squatter Converted into Tenant	24
Figure 49— J-422 Before the Eviction	24
Figure 50— J-422 After the Eviction	24
Figure 51— Camps on Canal 3	25
Figure 52— Deer Hunting Stand	25
Figure 53— Releasing Alligators	25
Figure 54— Brown Pelican	26
Figure 55— <i>Bitter Panicum</i>	27
Figure 56— Relic Tree on Wisner Beach	27
Figure 57— Sand Fencing on CAM I Area	31
Figure 58— Well Head—Leeville Area	35



WISNER DONATION PROPERTIES

1. Bay Chevreuil Property
St. John the Baptist Parish
1,500 Acres

2. Bayou Segnette Property
Jefferson Parish
1,800 Acres

3. Fourchon/Leeville Property
Lafourche Parish
35,000 Acres

FIGURE 1



2014 ANNUAL REPORT TO THE EDWARD WISNER DONATION ADVISORY COMMITTEE LETTER FROM THE SECRETARY TREASURER

The Committee's May field trip to Bayou Segnette on a perfect spring day symbolized the shift Wisner's priorities made in 2014. The laser focus on Wisner Beach and the BP Oil Spill relented in April when the US Coast Guard moved into the novel Middle "R" response. Almost a month later BP unilaterally cancelled the Access Agreement. Visits to Lafourche Parish related more often to coastal restoration projects, than to BP.

Resources, freed from BP, were deployed to "spring clean" our office and business priorities. Multiple trips to Bayou Segnette increased Wisner's presence on the property. Enforcement of lease requirements spurred lessees to spruce up their leases.

We widened our focus to boundary issues in Jefferson and St. John the Baptist Parishes as we worked to resolve one in Lafourche Parish. Opportunities to diversify revenue streams were explored and can be structured so that Wisner benefits financially, by protecting its title and by restoring its property. The completion of CAM I, the start of CAM II, the design of the Back Barrier Marsh project, and Fourchon Island lease negotiations all led to discussions about the future use of Wisner Beach.

A seismic shift late in 2014 will shape Wisner in 2015 – the price of oil and gas tanked. A 63% decrease in the per barrel price from June 2014 to March 2015 led to the Greater Lafourche Port Commission granting 20% basic rental reductions to its tenants from April 1, 2015 to March 31, 2016, or until the price of West Texas Intermediate remains at \$70 per barrel for 60 consecutive days.

The hallmark for 2015 will be evolution. Wisner will walk the delicate line between utilizing the property for revenue and protecting and preserving its natural resources as the Donation transforms.

Sincerely,

L. Amanda Phillips

Secretary Treasurer and Land Manager

*"Everything changes and nothing remains still."
Heraclitus of Ephesus c. 535 BCE – c. 475 BCE.*

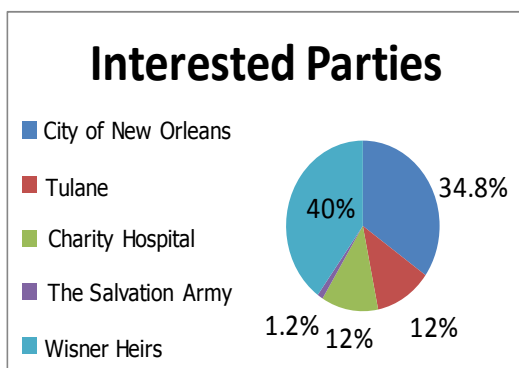


FIGURE 2—Fallen Cypress Tree
Bayou Segnette, Jefferson Parish
December 16, 2014
Photo Courtesy of L. Amanda Phillips

HISTORY OF THE DONATION

In August 1914 Edward Wisner made a 100-year *inter vivos* donation of approximately 53,500 acres of land and waterbottoms in Jefferson, St. John the Baptist, and Lafourche Parishes, Louisiana, to the City of New Orleans as Trustee. The original beneficiaries were the City, Charity Hospital (now the LSU Public Interim Hospital formerly known as the Medical Center of Louisiana at New Orleans), the Salvation Army, and Tulane University. The City of New Orleans was named as the beneficiary for several municipal, charitable, and educational purposes designated in the original Act of Donation.

Mr. Wisner's widow and two daughters filed a lawsuit claiming that the Act of Donation of 1914 violated several articles of the Civil Code of Louisiana and failed to comply with Act 124 of 1882. The lawsuit resulted in the Agreement of Compromise and Satisfaction of 1929. It granted Mrs. Mary J. Wisner (Edward Wisner's widow) and their two daughters, jointly, an undivided 40% interest in the Donation. Their attorney's legal fees were a percentage of their share. The compromise divided the beneficial interests as shown below.



Each beneficiary group was given a seat on the Edward Wisner Donation Advisory Committee, which was formed for the more cost-effective and efficient operation and management of the Donation. The Mayor of the City of New Orleans remains the Trustee of the Donation, and acts upon the advice and consent of the majority of the representatives of the Edward Wisner Donation Advisory Committee.

The Donation terminated on August 4, 2014, but the Committee continued to operate *status quo* under a suspensive appeal and by Committee vote until February 24, 2015. On February 24, 2015, the Committee extended its decision to continue operations *status quo* until the May 2015 regular meeting.

The *corpus* of the Donation, land and waterbottoms, are threatened by coastal erosion, subsidence and human activities. Wisner is actively involved in restoration activities, protection of its property, and lobbying for further restoration. These activities benefit not just the Donation, but also all ecological, residential, commercial, industrial, and governmental entities whose existence relies on the habitat and the storm protection provided by Wisner's property.

Wisner has partnered with and entered into cooperative agreements with many groups to propel restoration of its property. Researchers are granted access to the property. There have been several pilot restoration programs and experiments on the property. Wisner expends a great deal of financial and human resources in its fight against coastal erosion.



FIGURE 3 — CAM I Project Construction
November 14, 2014
Photo Courtesy L Amanda Phillips

RESTORATION AND PROTECTION PROJECTS

Current Restoration Projects

Fourchon Beach Repair/Renourishment Project (GeoTube Project)

The Greater Lafourche Port Commission's (GLPC) GeoTube Project fortifies the beach head on Fourchon Beach at the foot of Highway 3090. Work began in May 2013 and was completed in September 2013.

In 2014 the GLPC replaced 8,000 cubic yards of sand that was lost from the top of the GeoTubes in TS Karen. There were two volunteer plantings of *bitter panicum* on the GeoTubes done by Nicholls State University and the GLPC in 2014: in July and in November. There are plans for more plantings in 2015.

In March 2015, Wisner added 1,400 cubic yards of sand to the GeoTubes in areas where coverage was thin. This project will be billed to BP under the Access Agreement, as the sand replaces a small quantity of sand removed during the response effort.

GeoTubes are made from heavy-duty fabric which are filled with sand. They stretch 5,000 linear feet across Fourchon Beach. They are 6-feet tall and covered with sand to create a dune with +10 feet total elevation. The footprint of this project was extended 100 feet to the north to compensate for damage done by Hurricane Isaac. The GeoTubes were placed behind the old boudin bags.

Initial total estimated costs - \$4.2 million. Funding was from FEMA, the GLPC, Shell Oil Company, and the Fourchon Region Restoration Initiative (FRRRI). Estimates on the sand replacement, sand fencing, and planting have not been calculated.



FIGURE 4 — *Boudin Bags at the Foot of HWY 3090*

November 1, 2003

Photo Courtesy of L. Amanda Phillips



FIGURE 5 — *Volunteers Planting the GeoTubes*

November 11, 2014

Photo Courtesy of L. Amanda Phillips



FIGURE 6 — *NSU GLPC Volunteer Planting*

September 4, 2014

Photo Courtesy of L. Amanda Phillips



FIGURE 7 — *NSU GLPC Volunteer Planting*

November 11, 2014

Photo Courtesy of L. Amanda Phillips

Caminada Headlands Beach and Dune Restoration Project, Increment I (BA-45)

Sand started pumping July 31, 2013, at Belle Pass, and finished in December 2014. The property was vacated on January 8, 2015.

Approximately 3.31 million cubic yards of sand were placed along 5.87 miles of beach. This created 303 acres of beach and dunes. The sand was dredged from Ship Shoal. Prior to construction, the project's footprint was shifted 100 feet to the north to mitigate Hurricane Isaac's damage.

Sand fencing was erected as sections of beach and dune were completed. The dunes will be planted with native plants to retain sand in Spring 2015. The beach and dune creation, sand fence installation and plantings will be completed by early 2015. If necessary, a second round of planting is budgeted for 2015 or 2016.

Final cost – \$70 million. Funding is from the Coastal Impact Assistance Program (CIAP) (\$33 million Louisiana CIAP and \$7 million Terrebonne Parish CIAP) and State Surplus Funds (\$30 million).

Caminada Headlands Beach and Dune Restoration Project, Increment II (BA-143)

This project will create approximately 489 acres of beach and dune habitat. Sand pumping begins in May 2015 and it is estimated to be completed in May 2016. Wisner's property will be completely covered by November 2015.

Weeks Marine, the CAM I contractor, was awarded the project. It will pick up where BA-45 ended and continue down the beach to Caminada Pass.

The project design encompasses 8.9 miles of beach. It will use approximately 5.4 million cubic yards of dredge material from Ship Shoal. All of Wisner's shoreline will have been restored when BA-45 and BA-143 are completed.

Total estimated costs - \$144 million. Funding was provided by the National Fish and Wildlife Federation's Gulf Environmental Benefit Fund. The money is derived from BP's and Transocean's plea agreements.

Photos 8, 9 and 11 Courtesy of Weeks Marine
Patrick M. Quigley
 www.gulfcoastairphoto.com
 Slidell, LA 985-788-3458



FIGURE 8—Aerial View from the East of Belle Pass, the Start of CAM I
 August 7, 2013



FIGURE 9 —Aerial View from the West of Belle Pass and the CAM I Project
 January 2015

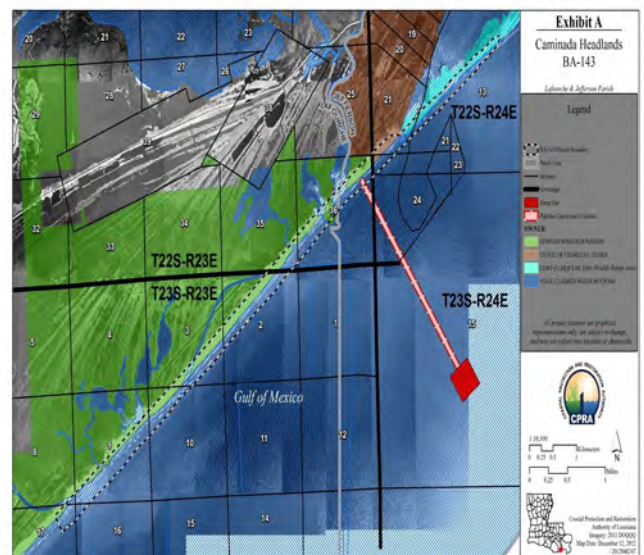


FIGURE 10 —Plat for Caminada Headlands BA-143
 Courtesy of CPRA

Coalition to Restore Coastal Louisiana and Brown University Environmental Leadership Lab Volunteer Planting—April 24, 2014

Brown University runs an Environmental Leadership Lab (BELL) for a week in April of each year. The program brings 30 high school juniors and seniors to the New Orleans area to learn about the interconnectedness of the environment with their lives in the hope that they will become agents of change in their own communities and lives. They partnered with the Coalition to Restore Coastal Louisiana in 2014.

The students planted 2,000 stalks of *bitter panicum* along a half-mile stretch of Fourchon Island.

Future Approved Restoration Projects

Caminada Headlands Back Barrier Marsh Creation, Increment I—(BA-171)

This project will work in conjunction with the BA-45 and BA-143 projects to increase their longevity. It will create 300 acres of marsh and nourish 130 acres of emergent marsh, behind 3.5 miles of Wisner Beach, using material dredged from the Gulf of Mexico.

BA-171 will provide a platform upon which the dune and beach can migrate, slowing the current degradation in the headland. The original proposed footprint was reduced. The marsh in some areas was healthier than previously thought, eliminating the need to nourish it, and thereby reducing costs. A kick-off meeting and planning field trips happened in 2014. Survey work for the design began in February 2015.

Total estimated cost - \$31.0 million. This project was voted through to the Design and Engineering phase by the Coastal Wetlands Planning, Protection and Restoration Act (CWPPRA) Technical Committee in December 2013. In January 2014 the Task Force funded \$3.35 million for Engineering and Design (Phase I).

If Engineering and Design is finished in 2015, BA-171 could be nominated for the December 2015 meeting where Construction (Phase II) money is awarded. It is more likely to be considered in 2016. The annual CWPPRA budget for Phase II is between \$40-70 million; 5-8 projects are usually completely funded. In 2013 only one project was funded. Projects have been designed by CWPPRA and completed using other funding sources. This is a project Wisner could fund, if Wisner receives restoration money from BP.

As this project will fill in the remnant of Bay Champagne, there is the possibility that the South



FIGURE 11—Aerial View from West of the End of CAM I and the CAM II Project Area
December 8, 2014



FIGURE 12—BELL Students at CRCL Volunteer Planting Event on CAM I Area
April 24, 2014
Photo Courtesy of L. Amanda Phillips



FIGURE 13—BELL Student and CRCL Volunteer Planting on CAM I Area
September 4, 2014
Photo Courtesy of L. Amanda Phillips

Lafourche Beachfront Development District (SLBDD) will oppose this. SLBDD has plans to utilize the Bay as a water feature and as a sandy area.

Language was added to this agreement to either share future carbon credits under a Cooperative Endeavor Agreement (CEA) with the State or to have the right-of-first refusal. Future eco-credits will similarly be shared with the State under a CEA.

West Fourchon Marsh Creation and Marsh Nourishment

This project moved to the Design and Engineering Phase at the December 2014 Technical Committee meeting. While west of Wisner property, it will protect the GLPC, LA Highway 1, Bayou Lafourche and Wisner's property. Pipeline canals would be filled in to reduce the artificial saltwater exchange, thereby reducing the interior marsh loss. A yet-to-be identified offshore sediment source will create 314 acres and nourish 300 acres of emergent marsh.

Total estimated cost - \$26.5 million based on offshore borrow. The landowner, LL&E, fully supports this project.

Potential Future Restoration Projects

Barataria Basin Barrier Shoreline Restoration (BBBS)

The project encompasses the entire Caminada Headlands area and back marshes up to the first pipeline canal. It will build approximately 880 acres of beach and dunes, and 1,186 acres of interior marsh would be restored or created. Geomorphic function of the barrier shoreline and critical habitat for essential fish and wildlife species would be restored.

This project was authorized in the 2007 Water Resources Development Act (WRDA) and is part of the Louisiana Coastal Area Ecosystem Restoration Study (LCA). The Chief of Engineers Report was signed in June 2012 and a Record of Decision was signed in April 2013. The Project Development team is negotiating a Design Agreement and Project Management Plan for the Preconstruction Engineering and Design (PED) for the Caminada Headland feature, which includes beach, dune and marsh creation.

Total estimated cost - \$350 million. The Natural Resource Damage Assessment (NRDA) fines from the BP Oil Spill could be a potential source of funding. This project has been proposed since 1998.



FIGURE 14 — Plat for BA-171 Project
Courtesy of USGS and CPRA

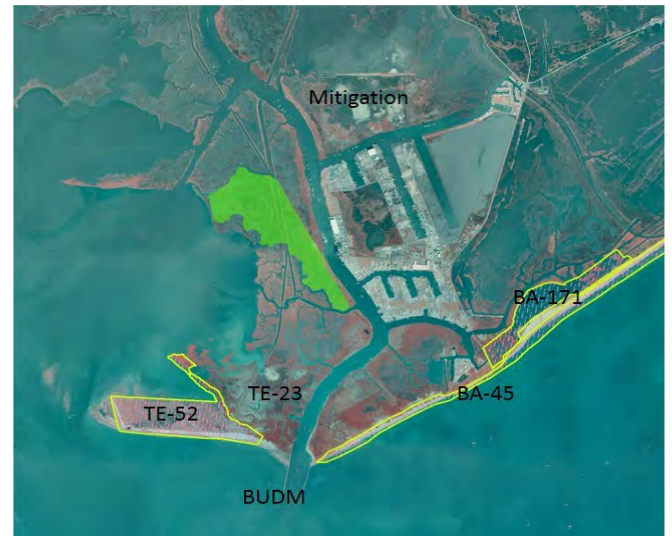


FIGURE 15 — Plat for West Fourchon Marsh Creation and Marsh Nourishment Project
Courtesy of CPRA

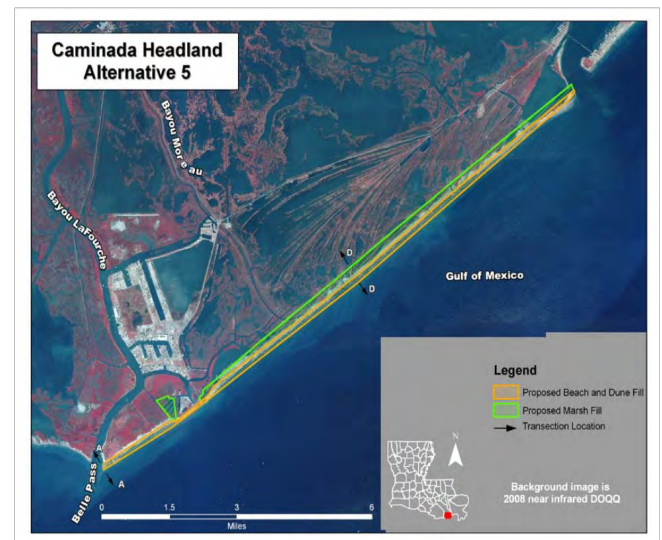


FIGURE 16 — Plat for BBBS Project
Courtesy of US Army Corps of Engineers

The State is attempting to build this project in increments with the CAM I and II projects and the Caminada Headlands Marsh Creation and Nourishment I and II projects.

East Leeville Marsh Creation and Nourishment Project

This project was nominated in 2014 but was not selected in December for Design and Engineering, despite a letter of support from Wisner.

It was re-nominated in January 2015 by Janet Rhodus, of Launch Leeville. The National Oceanic and Atmospheric Administration (NOAA) remains the federal sponsor for this project. It will create 400 acres of emergent saline marsh. Portions of Wisner property would be included in the current restoration plans.

The East Leeville Marsh Creation will protect the surface level portion of LA Highway 1 outside of the Lafourche levee system. This project will also protect Old LA Highway 1, the GLPC and the residents and businesses of Leeville.

Estimated total cost - \$28 million. This project will be in competition with the following project near Wisner's property.

Caminada Back Barrier Marsh Creation #2

This project was proposed but not nominated in 2014. It was nominated in January 2015 and is being sponsored by the Environmental Protection Agency (EPA).

There are 6 cells (A-F) on the map which can be filled to create marsh. If all 6 are filled, 1,056 acres of marsh will be created and/or nourished. This in conjunction with the BA-45, BA-143 and BA-171 projects would almost fully complete the proposed BBBS project.

At this time, the focus is on building the project using cells A, C and E to create 513 acres of back barrier marsh. Cells A-D are on Wisner property. As with BA-171, this project will give the beach and dunes that will be constructed with BA-143 a platform onto which they can migrate, instead of eroding into open water.

Total estimated cost - \$16-30 million. For just cells A and B the estimated cost is \$20 million. CWPPRA projects are normally in the \$30 million range, and it would be too expensive for CWPPRA to construct all of the cells. This is a project Wisner could fund, if Wisner receives restoration money from BP.



FIGURE 17 —Plat for East Leeville Marsh Creation Project
Courtesy of NOAA

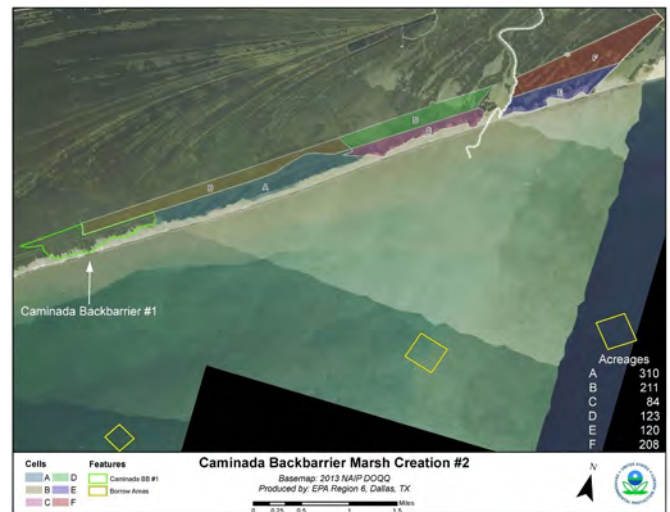


FIGURE 18 — Caminada Back Barrier Marsh Creation #2
Courtesy of EPA



FIGURE 19 —Aerial View of Broken Marsh
Public Boat Launch—Pre-construction
Spring 2003

Historical Restoration and Protections Projects

Throughout the past 20 years there have been various beach fencing projects, plantings and dune restoration projects. The largest, a NOAA Community-based Restoration Project, was constructed on Wisner's Fourchon property in 2003-2004. The Public Boat Launch Canal's shoreline was stabilized with rock. Forty-five acres of marsh were created adjacent to the boat launch and planted with 18,500 plugs of Smooth Cordgrass. An old levee was degraded, reestablishing the natural hydrology of over 1,850 acres of essential fish habitat, which reduced flooding on Highway 3090. The beach was protected by installing 7,000 linear feet of sand fencing and by planting 2,500 black mangroves.

In 2011, 2,500 additional black mangroves were planted by the Coalition to Restore Coastal Louisiana on the Lafourche Parish Wisner Restoration Project's marsh area.

Over 3,000 cypress trees were planted along the banks of Bayou Segnette by Jefferson Parish, the Coalition to Restore Coastal Louisiana and the camp owners in 2010.

Nicholls State University and the Golden Meadow Plant Resources tested burying hay bales in the sand to create dunes on Wisner Beach in Fourchon.

Wisner gratuitously leases to LUMCON a site for its research facility which is used by scientists and scholars from throughout the U.S.

Les Reflections des Bayou and Americorp built and installed trash cans on Fourchon Island. They partnered with Chevron to have the trash emptied on a regular schedule.

Wisner writes stringent mitigation language into all agreements. Pre- and post-activity aerial photography is required so any damage can be properly evaluated. Money received for damages is put towards mitigation efforts.

In 2005 Wisner founded Fourchon Region Restoration Initiative (FRRI) to focus all stakeholders efforts on restoring the Fourchon Region's coast and interior marshes. Shell Oil Company, Chevron, the GLPC, LOOP, UNO, the South Lafourche Levee District, and the Barataria Terrebonne National Estuary Program



FIGURE 20 —Aerial View of Marsh Platform

October 22, 2005

Photo Courtesy of Dr. Shea Penland



FIGURE 21 —Marsh Platform

August 28, 2014

Photo Courtesy of L. Amanda Phillips



FIGURE 22 —Dunes Created with Hay Bales

April 27, 2007

were founding members. Money raised by FRRI paid for research which aided in reducing the scientific uncertainties in the Caminada Headlands Restoration Project.

Upon member approval, in 2012 the remaining balance of \$60,378.31 was given to the GLPC to aid with the GeoTube project. FRRI's money will offset, slightly, the changes to the footprint Hurricane Isaac caused.

The GLPC has a servitude from Wisner for an area north of the Flotation Canal. The GLPC used this area to mitigate for impacts to 122.44 acres of saline marsh in the development of the Northern Expansion's Phase I.

Roughly 710 acres of marsh was constructed in an area that was previously open water. Mitigation Areas A and B were complete in 2001 and 2003, respectively. At least 80% of the vegetative coverage remains. Mitigation Area C was filled to its final elevation in late 2010. The Maritime Ridge is not on Wisner's property.

The area has maximized its mitigation potential. Future construction activities will require marsh creation to be done elsewhere. Wisner has the right to require mitigation be performed on its property for any activities that impact its wetlands.

FIGURE 25 — CWPPRA Airboat Flotilla—Feasibility Study
Leeville Area —June 3, 2014
Photo Courtesy of L. Amanda Phillips (below)



FIGURE 23 — Litter Abatement Program
Wisner Beach—July 2005
Photo Courtesy of Les Reflections des Bayous



FIGURE 24 — Mitigation Areas A, B, C and the Maritime Ridge
Photo Courtesy of the GLPC



REVENUES AND EXPENSES

2014 exceed estimated revenues by 4.69% despite the precipitous drop in the oil and gas market that began in June. It was the second highest revenue year when extraordinary revenues are subtracted and third highest when extraordinary revenues are included. Expenses fell 15.6% from 2013. The BP Oil Spill response expenses fell 82.39% with the end of response activities.

Operating overhead, including all BP related items, was 8.75% (compared to 9.5% in 2013, 18.1% in 2012 and 33% in 2011). Excluding BP costs and reimbursements, operating overhead was 8.5% (compared to 8.9% in 2013, 5.98% in 2012 and 10.7% in 2011).

Revenues

Gross revenues of \$6,461,104.69 in 2014 were 14.2% lower than in 2013. Revenues net of extraordinary income (BP reimbursements) of \$5,221.34 were 5.43% lower in 2014 than in 2013 – (\$6,455,883.35 vs. \$6,754,597.66).

Reimbursements of BP expenses fell with the decline in activity and with the Joint Venture attorneys shouldering more of the expense burdens.

Royalty revenues were 36.42% of the total revenues. Chevron royalties dropped 31.73% over 2013 while total royalty revenues only decreased 21.4%. The royalty revenue decline began in July. Hilcorp slipped less dramatically, by only 10.73%. Shoreline Southeast, LLC bucked the trend, with an 18.84% increase, partially due to prior period adjustments for gas that was used but was not paid for.

Shoreline was not able to propose a new well by June 2014, so a delay rental of \$471,121 was paid to hold all of the acreage that did not have a producing well attached to it. Its March payment was missed, but it was rolled into the April payment, along with a number of adjustments. A permit to drill the Amber prospect was submitted in September 2014.

The Greater Lafourche Port Commission's (GLPC) rentals contributed 46.24% of the total revenues. Slip C in the Northern Expansion began construction in February 2014, with some sites becoming available in late 2014. The GLPC's permit to build Slip D in the Northern Expansion area was approved by the State but was tied up with the US Army Corps of Engineers permitting process. Fourchon Island is attractive to the GLPC as a site for deep water vessels. The rental check is now directly deposited.

Year	Regular Income
2013 [#]	\$6,754,597.66
2014 ⁺⁺	6,455,883.35
2012 ^{**}	5,963,960.30
2008	4,801,137.99
2007	4,532,594.87
2005	4,032,948.88
2011 [*]	4,007,398.41
2010 ⁺	3,992,574.12
2001	3,894,427.18
2003	3,165,156.97

[#] Does not include \$703,435.35 in BP reimbursements or \$72,081.55 in Chevron back royalties.

^{*} Does not include \$713,757.90 in BP reimbursements.

^{**} Does not include \$549,451.57 in BP reimbursements or \$1,517,260.38 in recouped Chevron royalties.

⁺ Does not include \$216,087.22 in BP reimbursements.

⁺⁺ Does not include \$5,221.34 in BP reimbursements

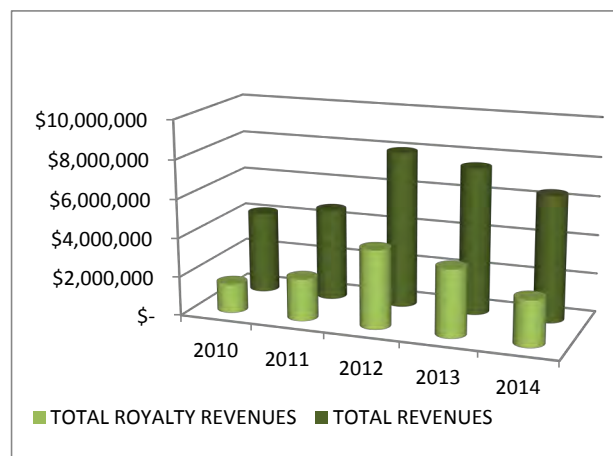


FIGURE 26 — Total Royalty Revenue Compared to Total Revenue 2010-2014

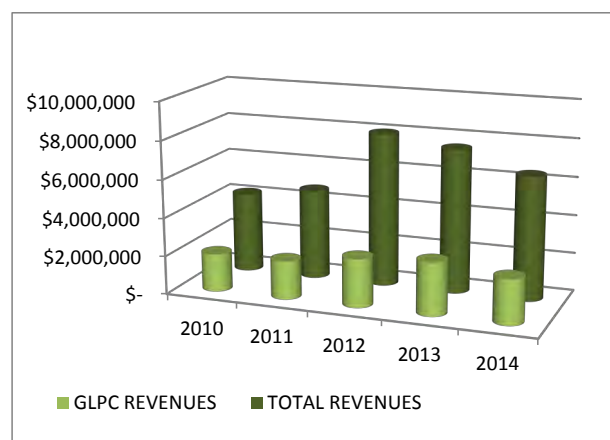


FIGURE 27 — Total GLPC Revenue Compared to Total Revenue 2010-2014

Campsite and Trapping leases were 23.97% higher in 2014 (\$215,244.32), than in 2013 (\$173,627.97). There was modest growth of 3.75% in Hunting and Trapping leases, despite one lessee not paying until 2015. ConocoPhillips is now coordinating hunting and trapping leases with Wisner on co-owned property.

A portion of the Chevron Fourchon Terminal rental (\$160,000) was set aside to fund projects billable to BP under the Access Agreement.

Expenses

Total expenses for 2014 were \$565,412.30, down 15.6% over 2013. Oil Spill related expenses were \$16,810.91, down 82.39%. While BP related Salary/Wages are included in the oil expenses, the commensurate Payroll Costs/Fees are not. The actual ordinary expenses were \$548,601.39, which was 15.23% below budget.

Professional fees were flat (0.87% lower) compared to 2013. Non-BP related legal fees were lower (\$101,632.56 vs. \$141,221.50). Included in these fees were work on the "Boat Graveyard" agreement, a comment letter to the EPA regarding the redefinition of the "waters of the US" under the Clean Water Act; drafting a new seismic permit; a commercial oyster fishing lease; adding language to share environmental credits with the State in restoration servitudes; a new surface lease with the GLPC; an insurance audit of all existing leases; monitoring LUMCON's progress; the eviction of a camp owner in Jefferson Parish; and filing as an interested party in the Wisner Heirs', LSU's and the Salvation Army's litigation with the City of New Orleans. A court reporter (\$12,134.60) has been used to record all the meetings.

The 2012 Audit was not completed by December 2013 and only a partial payment was made. The balance due for the 2012 Audit of \$2,950 was paid in 2014. The 2012 Audit was \$750 more expensive since the auditors had to read the long transcripts instead of the shorter minutes previously produced. For the 2014 audit, the transcripts are being summarized to keep the audit cost lower.

Pond & Company was hired to create a GIS database of Wisner's property at a budget of \$3,400. Only \$1,037.88 was expended in 2014.

Surveillance services increased 52.9% (\$112,486.95 vs. \$73,566.75) for two reasons: the Oil Spill response ended in June, and a new contract was negotiated with FET in August 2014. Most of FET's work in Lafourche Parish fell under monitoring the response activities. Since June, FET's work has shifted to non-response activities in this area. Under the new contract, a flat weekly fee of \$3,125 is now assessed versus time, expenses and equipment charges. This more than doubled the monthly surveillance fees while providing greater value to Wisner.

Due to the Affordable Care Act (ACA), Wisner was



FIGURE 28 — Bitter Panicum and Dibble
BELL Volunteer Planting—April 24, 2014
Photo Courtesy of L. Amanda Phillips

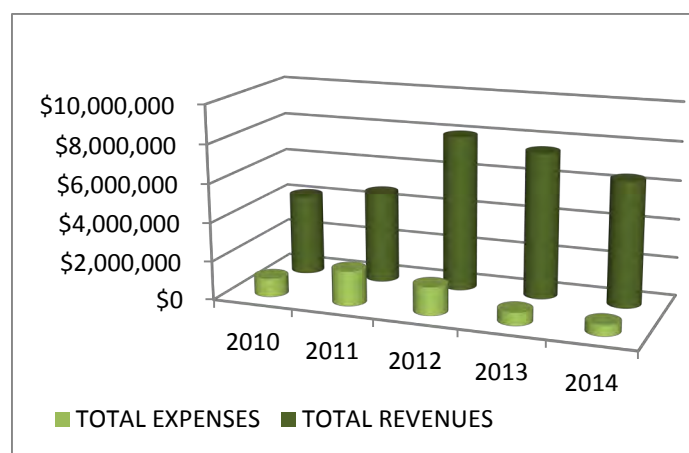


FIGURE 29 — Total Expenses Compared to Total Revenues 2010-2015

no longer able to offer a Flexible Spending Act (FSA) to its employees. Beginning January 1, 2014, if an employer offered an FSA, the employer had to also offer ACA compliant health insurance. Those who had a rollover amount from 2013 in an FSA had until March 31, 2014, to expend the funds. Ms. Burnside had \$263.99 left in her FSA at the end of 2013. It was paid out by March 31, 2014. Wisner incurred \$180 in FSA administration fees for the grace period.

Wisner changed its Service Agreement with Paychex and realized a \$5.48 reduction per pay period. Parking contract rates rose \$10 per month per contract in May 2014. Deltacom/Earthlink increased its fees by 5% in April 2014. The office lease was renewed for 2 years at 11.5% higher rate, effective September 1, 2014.

NEW PROJECTS AND CHANGES IN 2014

Pond & Company were hired to create a GIS database of Wisner's properties and generate maps. There will be a phased development. The initial phase outlines the ownership boundaries and percentages. The next phase will be to add layers showing surface and subsurface leases, servitudes, restoration projects, and the State Master Plan for restoration. This will allow Wisner to better manage the property for revenues and restoration. The GIS database will also be in a mobile format which FET can use in the field.

Wisner submitted comments to the EPA regarding its proposed redefinition of the "waters of the US" under the Clean Water Act. There are some technical problems with the rule, as well as the potential for it to freeze development on Wisner property by making mitigation costs onerous.

Background checks were instituted to vet potential camp owners in all three parishes. The hunting and trapping leases had insurance language added.

Jefferson Parish

Pond ground-truthed the survey points with deer hunter, Brad Carmadelle, as our guide. We discovered a boundary dispute with the National Park Service (NPS) along our north/south boundary. Our surveyors show the Entergy Transmission line on Wisner property and the NPS informed our hunter it was on their property. The NPS is investigating how it determined its line.



FIGURE 30 — Bayou Segnette, Jefferson Parish

December 16, 2014

Photo Courtesy of L. Amanda Phillips



FIGURE 31 —

Bayou Segnette, Jefferson Parish

December 16, 2014

Photo Courtesy of L. Amanda Phillips



**FIGURE 32 — Bridge to Fourchon Island
Lafourche Parish**

August 28, 2014

Photo Courtesy of L. Amanda Phillips

A new three-year deer hunting lease was signed with Brad Carmadelle.

The first 2% per annum increase of the campsite leases took effect. The camp renumbering project was almost completed. In addition to weather delays, salina overtook the canals and made the canals impassable in areas. It should take one half-day visit to complete.

One squatter was identified on the property and converted to a tenant by paying \$11,964 in back rentals.

As the camps were renumbered, the lots were measured and the camps were photographed. Any lots that did not conform to the lease designated size had their rentals adjusted to reflect the actual size of the area used. Follow-up visits occurred on subsequent renumbering trips to camp owners who received letters because their camps were in disrepair or whose lots were overgrown.

Lafourche Parish

Simon Peragine, our outside counsel for non-BP related matters, held *LUMCON* to its promise of every-other month reports. The bottleneck has been that FEMA has to approve the changes to the bulkhead plans necessitated by the ongoing erosion. It is anticipated that repairs will begin in July 2015.

The GLPC and Wisner continued formal negotiations on the Fourchon Island lease. In September 2014, the GLPC's management team proposed rental terms for the lease. They indicated there were additional language changes in other sections of the lease, but have yet to return those. The GLPC services 90% of the deepwater rigs in the Gulf of Mexico and does not foresee a slow-down in Gulf oil and gas activity despite the current market instability. The GLPC has expensive repairs to make to the Fourchon Island bridge just so that it will last 5 years. The GLPC had hoped to replace it in 8-10 years with few interim repairs.

Shoreline's initial interest in continuing Manti's negotiations with Wisner for a hydrocarbon lease on two additional parcels of land in the Leeville area stalled. In March, Wisner rescinded its lease offer. In early 2014 Shoreline requested a seismic permit from Wisner, but rescinded its request in March. In January 2015, Shoreline made another request for a seismic permit. Wisner's per acre offer has gone unanswered.



FIGURE 33 — Boat Graveyard
Leeville Area, Lafourche Parish

May 7, 2014

Photo Courtesy of L. Amanda Phillips



FIGURE 34 — Lighted Buoy in Boat Graveyard
Leeville Area, Lafourche Parish

May 7, 2014

Photo Courtesy of L. Amanda Phillips

FIGURE 35 —
Black Mangrove
Stand and its
Woody Roots

August 28, 2014

Photo Courtesy of L.
Amanda Phillips



Blue carbon is the carbon stored and sequestered in coastal ecosystems such as mangrove forests, seagrass meadows or intertidal saltmarshes.

The boundary line between Sections 9 and 16 in T21S R23E in Lafourche Parish was surveyed. The Lafourche Parish School Board's tenant in Section 16 and Wisner's oyster lessee have not been able to agree upon a line in the marsh. The surveyor's plat is substantially different from the line provided by the School Board's land manager. This will have to be worked out in 2015.

The *Caminada Headlands Beach and Dune Restoration Project, Increment I*, which began in August 2013 was completed in December 2014.

The *Caminada Headlands Beach and Dune Restoration Project, Increment II*, was fully funded from the National Fish and Wildlife Foundation's Gulf Environmental Benefit Fund. It was put out for bid in July 2014 and Weeks Marine, who built CAM I, was awarded the contract. Construction is slated to start in April 2015 and to be completed in May 2016.

The *Caminada Back Barrier Marsh Restoration Project*, proposed under CWPPRA, is in the Design and Engineering Phase. The kick-off meeting was in early June 2014. Surveys for the design began in February 2015. Not all CWPPRA projects that make it to Design and Engineering are constructed with CWPPRA funds, but historically other funding has been found for construction.

A Servitude was signed with CPRA for the Back Barrier Marsh Creation Project. Language was added to the agreement stating that two of the project's purposes are climate mitigation and the enhancement of ecosystem services. This opens the door to using the project for eco-credits (carbon credits or credits for other environmental enhancements) in the future. Wisner and the State have agreed to either sign a Cooperative Endeavor Agreement (CEA) to share future carbon credits, or to allow Wisner the right-of-first refusal of the carbon credits if the State tries to sell the carbon credits. Eco-credit sales, should they be sold, will be handled in a CEA at a later date.

Several Non-Intrusive Access Agreements were given for research: to BTNEP to study the behaviors of piping plovers on three different type substrates on Fourchon Island; to ULL to study coastal carnivores; and to Coastal Bend Bays & Estuaries to observe the Red Knot bird. Non-Intrusive Access Agreements were also issued for planting and beach sweeps: to the GLPC in cooperation with Nicholls State University (NSU) to do 2 volunteer plantings on the GeoTubes; to the Coalition to Restore Coastal Louisiana in partnership with the Brown University Environmental Leadership Lab to do volunteer planting on the CAM I area, and to NSU for a beach sweep at the eastern end of Wisner Beach. An Intrusive Access Agreement is being negotiated with



FIGURE 36 — Forrest Travirca and the Beach Crest Height—Wisner Beach
September 4, 2014
Photo Courtesy of L. Amanda Phillips



FIGURE 37 — Beach Sweep at Breach 1 Wisner Beach
September 20, 2014
Photo Courtesy of Dr. Allyse Ferarra, NSU

Entergy for the removal of the Golden Meadow to Leeville Transmission Power Line in fall 2015.

A Reburial Agreement was signed with the Chitimacha Tribe of Louisiana. They will rebury the prehistoric human remains uncovered during the BP Oil Spill response. The artifacts collected during the Spill were donated to the Chitimacha Tribe for use in its museum and as an educational tool.

EPL Oil and Gas merged with Energy XXI. It has a scrapper trap lease on Fourchon Island. Stone Energy assigned its Bay Marchand facility at Fourchon Pass to Talos Energy Offshore.

St. John the Baptist Parish

There have been no changes in this area. There are some title issues to be resolved and a survey should be done. Dr. Pilié's duck camp and hunting lease remain in effect. It is up for renewal in 2015. Rusty Cavalier's egg collection revenue almost doubled at \$7,140 in 2014 versus \$4,643 in 2013. This is the only area of the property that has accretion.

Oil and Gas Prices

Globally, oil prices in 2014 rode a rollercoaster from a high of \$115 per barrel in June to below \$70 per barrel in December. The average price per barrel in Bay Marchand for 2014 was \$100.17.

2015 has a dismal outlook. One estimate is that West Texas Intermediate (WTI) will average \$52 per barrel in 2015¹. In March 2015, WTI reached \$43.46 per barrel, the lowest since 2009: a 63% drop from June 2014. (South Louisiana Crude is produced on Wisner property.)

Industry analysts are mixed on whether oil prices will hit bottom in 2015. There are a number of contributing factors. Demand for oil in India and China was overestimated. Other energy sources are replacing oil and gas, and efficiencies have been increased. Production has increased, especially in the US and Libya. Of the 30 million barrels per day that are produced, about 9 million barrels are produced by the US. There is a lack of storage capacity for the oil that is being produced. OPEC, which controls 40% of the market, refuses to slow production. Political instability in the Middle East can have a dramatic impact on the market.



FIGURE 38 — Lafourche Parish Camps, Canal 3
August 28, 2014
Photo Courtesy of L. Amanda Phillips



FIGURE 39 — St, John the Baptist Parish
April 19, 2002
Photo Courtesy of L. Amanda Phillips

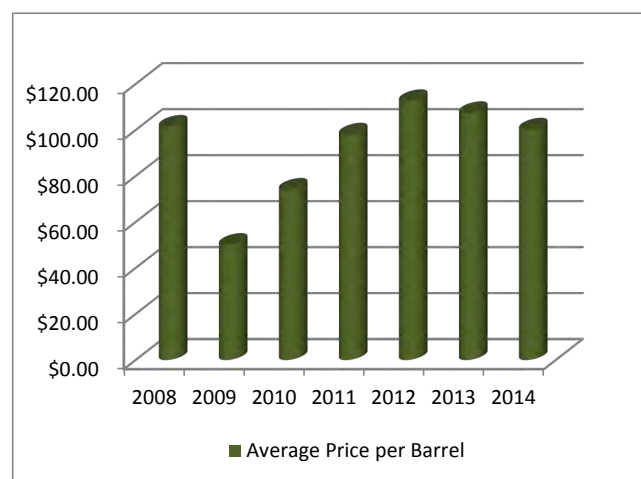


FIGURE 40 — Average Price per Barrel of Oil 2005-2014

¹ <http://www.eia.gov/forecasts/steo/index.cfm> as viewed 3-25-2015.

EDWARD WISNER DONATION TRUST FUND

The City of New Orleans received \$1,996,020.95 from the Edward Wisner Donation in 2014. This was 4.2% higher than had been estimated. The City awarded grants in August.

Estimated revenue for the City in 2015, based on projected income and the approved operating budget, is approximately \$1,132,405.82.

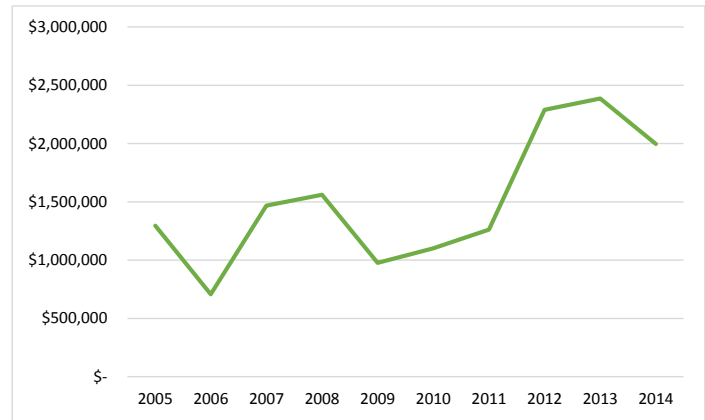


FIGURE 41 — City's Wisner Revenues 2005-2014

OFFICE AND OTHER PENDING ISSUES

Brooke Staffing Companies was contracted to provide an Administrative Assistant. On May 1, 2014, the position was brought in-house, and the temporary staffing contract was cancelled.

A contra-revenue account was set up for each of the royalty revenue accounts to record severance taxes and other deductions. This will assist the CPAs with the royalty revenue gross-up at year-end and with the audit.

A property access calendar has been set up with FET Investigations. Once access has been granted, the person(s) or the entities who have been granted access are entered into the calendar. This calendar is maintained and shared between Wisner and FET.

The Lease and Agreement Database is 95% complete. The Campsite database was completed by the Administrative Assistants. All active leases with payments or with insurance requirements are in an Access database.

The GLPC and Wisner have been negotiating an agreement to indemnify Wisner for the Boat Graveyard created by the GLPC in a canal in the Leeville area in 1977. At the time it was created, the GLPC indicated it would indemnify Wisner. All requests for a written agreement, including environmental, pollution and contamination insurance, have been rejected. The GLPC covers this area on its Commercial General Liability policy. The GLPC officials have stated they believe the GLPC and no-one else is responsible for this. The Leeville Public Boat Launch opened in the fall and will enable more boaters to access the area. The GLPC installed lighted buoys.



FIGURE 42— Boat Graveyard—LA Highway 1 in Background
May 7, 2014
Photo Courtesy of L. Amanda Phillips

LITIGATION

In December 2012 the City filed a Motion to Petition the Court for Instructions to the Trustee on eight points. In January 2013, four Wisner Heirs answered with a suit containing eight points to, among other things, have the Mayor removed as Trustee and to declare the Trust perpetual under Act 167 of 1920. In March 2013 the suits were consolidated. The hearing was September 24, 2013.

The Committee was granted a Petition to Intervene in the consolidated suits as a necessary and indispensable party. The Salvation Army and LSU subsequently intervened as well. The Heirs filed a Motion for Summary Judgment asking to have the Trust declared perpetual and to force the Mayor to act with the advice and consent of the Committee. The City responded with an Exception of No Right to Action and a Cross Motion for Partial Summary Judgment.



FIGURE 43 — Juvenile Wilson Plover
Wisner Beach

September 4, 2014

Photo Courtesy of L. Amanda Phillips

On October 11, 2013, Judge Melvin Zeno issued his ruling:

1. The Edward Wisner Donation is not a perpetual trust. It will expire in August 2014.
2. The EWDAC's authority to administer trust property is advisory only and does not give the EWDAC the right to dictate how the City allocates the proceeds once they are distributed. The Mayor does not need the EWDAC's permission as it relates to the City's distribution of the funds allocated to the City. The EWDAC's role is:
 - A. Advisory
 - B. Limited to Trust Matters
3. The EWDAC is a public entity and subject to the Louisiana Open Meetings Law.
4. The Motions for Summary Judgment filed by the Heirs and the City are moot.

The Wisner Heirs, the Salvation Army and LSU were granted a suspensive appeal. Oral arguments were heard before a three-judge panel in May 2014. On August 8, 2014, the parties were asked to present oral arguments before a five-judge panel. On September 18, 2014, the Court of Appeal affirmed Judge Zeno's ruling:

1. The Edward Wisner Donation is not a perpetual trust. It expired in August 2014.
2. The EWDAC is a public entity and subject to the Louisiana Open Meetings Law.

However, the Court reversed the advice and consent ruling, stating that:

3. The Mayor requires the EWDAC's advice and consent before awarding grants.

The Wisner Heirs and LSU filed Writ Applications with the Louisiana Supreme Court on October 15, 2014. On Friday, February 13, 2015, the Louisiana Supreme Court denied the Writ Applications. This makes the lower court rulings final and unappealable. The Committee agreed to continue its operations *status quo* until the May 2015 Regular Meeting while the parties work together to formulate their future plans.

BP DEEPWATER HORIZON MACONDO 252 SPILL

Claims and Global Settlement

Since response was winding down and the Access Agreement was canceled in May, claims were significantly lower. Claims 41-50 were submitted in 2014 in the amount of \$14,470.65. BP withheld payment on \$3,801.77.

BP continued to dispute the Global Settlement Agreement, but it has no bearing on Wisner and its case.

Response

The Deepwater Horizon rig exploded offshore on April 20, 2010. The spill began affecting Wisner's lower Lafourche Parish property on May 10, 2010. Three segments on Wisner property remained in response as 2014 began. Two segments were moved out of response in mid-March. Zone 1, which BP worked heavily in December 2013, remained in active response under the Shoreline Cleanup Completion Plan (SCCP) until April 15, 2014, when the US Coast Guard (USCG) transitioned it and 5 other segments into the Middle Response (Middle "R") phase. This phase is unique to the Deepwater Horizon spill. BP released a statement that evening that they had completely cleaned the beaches.

The USCG positioned 15 personnel, along with 22 Oil Spill Response personnel from BP's contractor at BP's former Grand Isle office for Middle "R." When tar balls are reported, these personnel are deployed to clean up. Wisner had 3 NRC calls.

Wisner unsuccessfully battled BP and the USCG on many fronts throughout the response. In 2014 formal proposals to assess the nearshore area for buried oil and tar mats and the marsh/wetlands for oil were presented to BP and the USCG. There was no response. Wisner requested a more thorough cleanup of Zone 1. In December 2013 Dr. Pardue took 60 cores of which 15-20% had an inch or more of oil. This does not meet SCCP guidelines. In lieu of tilling, Dr. Pardue proposed several industry-standard measures for Breach 1 that BP rejected. Wisner asked for the replacement of sand removed during cleanup efforts in every Scope of Work. Sand was withheld every time.

The Committee set aside funds from the September Chevron tank farm payment to pay for:

1. \$54,000 – Remediation of oil in Breach 1 by oxygenating the microbes – Dr. Pardue
2. \$16,300 – A magnetometer run to locate other buried t-posts for removal - MPH
3. \$90,000 – Placement of 1,400 cubic yards of sand on the beach – S. Jeffress Williams

BP left behind a large number of t-posts, pvc pipes, boom and oil mop which had been used in the response. Wisner repeatedly asked BP to remove these items to no avail. After independently verifying the items, BP ultimately agreed to pay Forrest Travirca to remove 100 items (pvc posts, t-posts, oil boom) left



FIGURE 44 — Oil Monitoring Wells—Breach 1

January 26, 2015

Photo Courtesy of Dr. John Pardue



FIGURE 45 —Escarpment from Mat Removal—Zone 2

December 12, 2014

Photo Courtesy of Forrest A. Travirca

behind. BP will be billed for these tasks under the Access Agreement.

Access Agreement

BP and Wisner signed an Access Agreement in 2010, which allowed BP to enter the property for response activities under specific conditions. There was no termination date in the agreement. On May 22, 2014, BP notified Wisner that they were cancelling the Access Agreement immediately. Wisner filed suit and the litigation wended its way to the Magistrate. In December, Wisner was informed it would be allowed to separate the Access Agreement from the Multi-District Litigation. The case should go before the Judge in 2016.

With the end of the Donation as it was known, each of the beneficiaries was advised to determine which legal counsel each would prefer to advise them regarding their options in the BP matter, including whether or not they should intervene individually. Subsequently, the Joint Venture Attorneys were selected by the Committee, as well as by The City of New Orleans, LSU, Tulane University and the Salvation Army. Associated Catholic Charities is now represented by Couhig Partners. Waltzer, Wiygul & Garside represents the Wisner Heirs and the Porteous-Milner-Wall heirs.

Federal Litigation

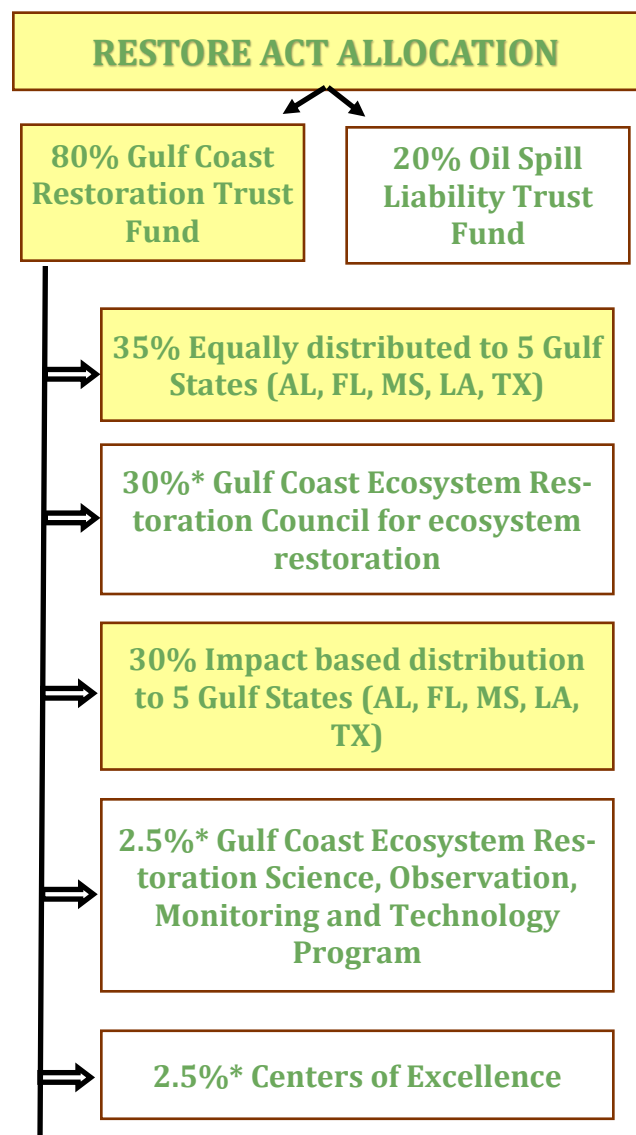
There are three trial Phases in the Clean Water Act's litigation.

Phase I's ruling was announced September 4, 2014. BP was found to carry 67% of the blame; to have been grossly negligent; and to have engaged in willful misconduct in the events that led up to the spill. Transocean was 30% to blame and Halliburton was 3% to blame. Their actions were deemed just negligent. BP has appealed this ruling.

Phase II's ruling was announced January 15, 2015. Judge Barbier determined that 3.19 million barrels of oil were released. BP was not found grossly negligent in its efforts to control and to contain the oil. BP contested the Judge's determination of the size of the spill and filed an appeal in February 2015. The United States appealed the ruling in March 2015.

Phase III's trial took place from the end of January through the beginning of February 2015. This ruling will assess the civil penalties, which will range from \$1,100—\$4,300 per barrel spilled. Normally these fines are deposited into the Oil Spill Liability Trust Fund, but the RESTORE Act directs 80% of the civil and administrative penalties into the Gulf Coast Ecosystem Restoration Trust Fund.

The Natural Resources Damage Assessment will be determined in the *OPA 90* (Oil Pollution Act of 1990) litigation, which will be a separate matter.



** Supplemented by interest generated by the Trust Fund (50% to Gulf Coast Ecosystem Restoration Council, 25% to Science Program, 25% to Centers of Excellence)*

Wisner Beach

The South Lafourche Beachfront Development District (SLBDD) held 3 of its 12 monthly meetings. The SLBDD was trying to discern whether the beach would be open in 2014 and what activities the State would permit on the beach. The beach was closed for CAM I construction in 2014 and will be closed in 2015 for CAM II construction. Two new SLBDD Commissioner seats were created in late 2013. The positions were not filled in 2014.

Driving on the beach is prohibited by two State laws. The Federal Endangered Species Act protects threatened and endangered shorebirds from late July/August through late May. The Migratory Bird Treaty Act prohibits the "take" of the migratory birds. Any agency or body that permits an activity that results in the "take" of a Migratory Bird will be fined. A "take" is not limited to killing or injuring, but includes any disturbance of the bird.

The Grand Isle Independent Levee District acquired the remaining portion of Elmer's Island that was owned by the Elmer family in June. It was assigned to the LDWF for management. LDWF manages the State-owned portion of Elmer's Island. Many trespassers enter Wisner property in vehicles from Elmer's Island. LDWF provides no patrols of Elmer's Island.



FIGURE 46 — Signs on CAM I Area

January 13, 2015

Photo Courtesy of Forrest A. Travirca

LA RS 38:213 A "No person shall ride, drive or haul upon the public levees or integrated coastal protection projects or their rights-of-way" unless permitted by the levee district.

LA RS 49:214.5.8 "No person shall engage in any of the following activities on any dune located on public or private land in the coastal area: . . . (2) Riding, driving or operating, or hauling any motorized or mechanical vehicle except on public roads."

Species on Wisner Beach protected by the Migratory Bird Treaty Act:

Wilson's Plovers
White Pelicans
Brown Pelicans
Least Terns*
Red Knots*
Piping Plovers+

*Endangered Species
+ Threatened Species



**FIGURE 47—Least Terns and Wilson Plovers Feeding in the Surf
Wisner Beach**

September 4, 2014

Photo Courtesy of L. Amanda Phillips

CAMPSITE, HUNTING, TRAPPING, FISHING AND OYSTER LEASES

This was the first year that the 2% escalation took effect. There is full compliance with the insurance requirements which were also added in the 2013 lease. Renewals were sent for 133 camps in Jefferson Parish, 68 camps in Lafourche Parish and 2 camps in St. John the Baptist Parish. Three camp owners were evicted in 2014 from Jefferson Parish. One camp was relinquished in Lafourche Parish.

Rental income was \$175,184.17, a 22.4% increase from 2013's \$143,126.63. Rentals are due January 6, but collections begin in December. As a result, rental income swings from year to year are common. In 2014, 53.65% of the rentals collected were for 2014's rental. In 2013, 57.3% of the rentals collected were for 2013's rental. In 2012, 44.1% of the rentals collected were for 2013.

Late fees were almost half 2013's amount: \$2,036 for Jefferson Parish (41 months) and \$700 for Lafourche Parish (14 months). Thirteen camps were transferred in Jefferson Parish, 1 in Lafourche Parish and none in St. John the Baptist Parish. Wisner sold two camps in Jefferson Parish and a squatter was converted into a tenant.

Campsite Leases

JEFFERSON PARISH

J-162 was identified as a squatter and converted into a tenant in December. He agreed to pay \$11,964 for back rentals, with \$6,000 up front and the balance over 6 months. J-122 was evicted for failure to obtain insurance. The camp was sold for \$1,000. The evicted owner had paid \$1,500 for the camp. J-404 was evicted for failure to pay rent. The camp was sold for \$3,000 (rent, late fees, court costs + a premium).

J-422 was evicted for lease violations. The owners' son and his friend were arrested on the campsite and stolen property was recovered from the campsite. The owners were given 60 days from the eviction to sell the camp. Instead the lessees removed everything from the site except a shed and a large, floating metal shed in the canal.

The renumbering project is 97% complete. One half-day is needed. Additional rentals were assessed to camp owners occupying a space larger than 100' x



**FIGURE 48 — Squatter Converted into Tenant
Jefferson Parish**
August 14, 2014
Photo Courtesy of Forrest Traverca



**FIGURE 49 — J-422 Before the Eviction
Jefferson Parish**
October 6, 2014
Photo Courtesy of L. Amanda Phillips



**FIGURE 50 — J-422 After the Eviction,
Jefferson Parish**
December 16, 2014
Photo Courtesy of L. Amanda Phillips

50'. The insurance requirement, the rent escalations, and an increased land owner presence has pressured tenants to clean up their lots or sell their camps.

LAFOURCHE PARISH

There was only one transfer and one camp was relinquished. An inventory of the Lafourche Parish camps will be performed once the renumbering is complete in Jefferson Parish.

A camp owner on co-owned property began bulk-head work without a permit. It was noticed on a site visit and work was halted until the proper permit was submitted to the office.

ST. JOHN THE BAPTIST PARISH

This area should have a formalized survey and the ownership issue with Eight Star, LLC needs to be addressed.

Hunting and Trapping Leases

Revenues were flat, \$26,724.15 in 2014 versus \$25,757.45 in 2013. One lessee on a co-owned lease paid in 2015 for 2014. There is a 2% escalation on the hunting leases.

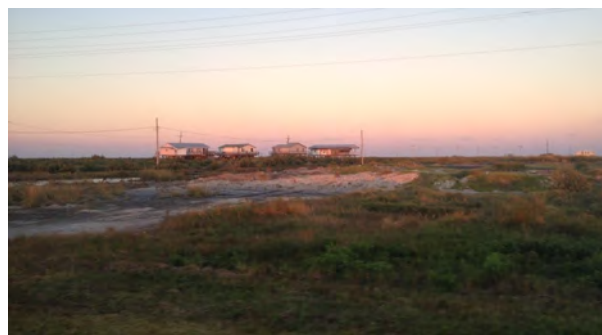
HUNTING LEASES

Brad Carmadelle signed a new three-year deer hunting lease in Jefferson Parish. There is a 2% escalation clause. He paid \$6.243 per acre in 2014. He has permission to hunt rabbits, feral hogs and coyotes as well. He guided Wisner and Pond around the property on the ground-truthing visit.

Dr. Noël Pilié is in the third-year of his three-year duck hunting lease. There is a 2% escalation clause. His rental was \$3.902 per acre this year. He has held this lease for 37 years. Aerial photographs show a large amount of accretion and loss of ponds on his lease area. If he does not renew the lease in 2015, it will be put out for bid.

TRAPPING LEASES

Revenues were down for trapping, despite a large increase from alligator egg collecting leases. Alligator egg collections generated \$7,140, a 52.9% increase over 2013's \$4,643. Mr. Cavalier is in the second-year of his two-year lease. The Des Allemands area re-



**FIGURE 51 — Camps on Canal 3
Lafourche Parish**

November 20, 2014

Photo Courtesy of L. Amanda Phillips



**FIGURE 52 — Deer Hunting Stand
Jefferson Parish**

December 16, 2014

Photo Courtesy of L. Amanda Phillips



FIGURE 53 — Releasing Alligators

May 8, 2014

Photo Courtesy of L. Amanda Phillips

mains where he collects most of his eggs. Far fewer eggs are collected in Jefferson Parish.

Mr. Loupe's nutria rental this year was less than his \$400 annual fee, so no additional income was collected. He paid \$1,531.88 for his alligator lease, a 66.08% decrease over 2013's \$2,317.96. Mr. Fabre's revenues were \$1,525, a 31.68% decrease over 2013's \$2,232.

FISHING LEASES

The Bankston Northern and Southern leases are in the third-year of their five-year life. The rental is \$2.6426 per acre. There is a 2% escalation clause in each lease. Their fishing lease will be impacted by the Back Barrier Marsh Creation project. CPRA, Wisner and the Bankstons met to discuss the fishing club's needs and requests in conjunction with the project. The Bankstons indicated that they would fix the gates. There is a growing encroachment of kayakers on the property. This led some of their members to question why the members had to pay to fish in the area when the kayakers do not.

No new leases have been issued in 2014. The 4 co-owned leases are in the second-year of their 3-year term and have a 2% escalation clause. The per-acre rental is \$3.06.

Oyster Leases

Wisner has 5 active oyster leases remaining. One leaseholder died in 2014. The leases normally extinguish upon the lessees' deaths, however this lease is on co-owned property. ConocoPhillips wished to continue the lease with the lessee's son. Revenues were down because one lessee did not pay until 2015. Wisner collected \$351.50 in 2014 versus \$443.50 in 2013. Wisner's revenues will be further reduced in 2015, as one oyster lease spans Wisner property and the School Board's property. It appears 3 acres of the lease will be transferred to the School Board once a boundary agreement is crafted.

FET stopped a commercial oyster fishing crew which was trespassing on the property in the Leeville area. They worked for Terry Shelley. Mr. Shelley had requested a commercial lease from Wisner in the past. At the time there was no interest in commercial leases. Mr. Shelly could be converted into a paying lessee who carries insurance. Wisner will generate revenue from otherwise fallow property. If Mr. Shelley is a tenant, his method of cultivating oysters will result in land reclamation from the water bottoms. A lease would assert Wisner's title to the property. Simon Peragine is drafting a commercial oyster lease for the Committee's review.

The 13 remaining contested active State leases are at a stalemate. The oyster lease moratorium will probably be lifted in 2015. The Oyster Leasing Division is issuing leases on water bottoms where an application for a lease had been made prior to the moratorium. If leases are issued by the State on Wisner property, it will cloud Wisner's title. This will require close monitoring by Wisner so appropriate action can be taken to protect Wisner's title.



FIGURE 54 — Brown Pelican
Leeville Area—Lafourche Parish

August 28, 2014

Photo Courtesy of L. Amanda Phillips

2015 GOALS

1. Finalize leases/agreements in negotiations.
2. Negotiate new leases.
3. Assist counsel in the BP matter in preparation for the Access Agreement trial.
4. Assist the Committee and Counsel in the Donation's metamorphosis into its eventual state.
5. Implement strategies for resolving outstanding oyster leases on Wisner property and monitor State's oyster leasing activities (lifting the moratorium and issuing leases for old applications).
6. Resolve boundary issue in Lafourche Parish with the School Board and properly apportion the oyster lease between the owners.
7. Resolve boundary issue in Jefferson Parish with the Jean Lafitte National Park Service.
8. Monitor LUMCON's repairs.
9. Finish the Jefferson Parish campsite numbering.
10. Continue the scanning and back-up of Wisner records in accordance with the Document Retention Plan.
11. Maintain a calendar/list of persons/entities accessing Wisner property and share with field inspector.
12. Continue to develop and implement strategies to inhibit trespassers.
13. Develop a prioritized list and cost estimates of surveys to be completed.
14. Augment the GIS database with additional layers of detail.
15. Maintain and update database of agreements.
16. Evaluate potential private sources for restoration on Wisner property affected by the Spill.
17. Initiate Lafourche Parish campsite inventory.
18. Present quotes for property insurance as a result of the insurance audit.
19. Create a database of all known pipelines on the property (abandoned and active).



FIGURE 55 — *Bitter Panicum*
 Wisner Beach—September 4, 2014
 Photo Courtesy of L. Amanda Phillips



FIGURE 56 — *Relic Tree on Wisner Beach*
 September 4, 2014
 Photo Courtesy of L. Amanda Phillips

WISNER DONATION PRIMARY REVENUE BREAKDOWN 2010—2014

CATEGORY	2010	2011	2012	2013	2014
Greater Lafourche Port Commission	\$1,986,763.74	\$2,008,497.30	\$2,538,234.33	\$2,766,602.30	\$2,987,327.43
Camp and Trapping Leases	150,256.83	155,845.16	186,370.07	173,627.97	215,244.32
Chevron Pipeline Lease	250,112.99	274,925.88	279,500.63	284,531.64	290,428.11
Plains Surface Lease	18,522.00	19,448.10	26,570.51	24,749.04	25,986.50
NORM Agreement	17,827.00	18,586.00	18,897.00	19,172.00	19,477.00
Shoreline Deferred Rental				471,121.00	471,121.00
Goldking/Dune/Manti/Shoreline Royalties	2,078.61	16,355.98	314,804.46	611,920.08	727,190.11
Chevron Royalty	1,466,152.70	2,130,270.44	3,711,127.96	2,379,858.27	1,624,617.40
Hilcorp Royalty	1,073.21	1,279.12	1,205.67	1,375.71	1,228.06
Chevron Mineral Lease	31,000.00	31,000.00	31,000.00	31,000.00	31,000.00
Shell Pipeline (Energy Partners/EPL Oil and Gas)	2,216.20	2,325.96	2,442.26	2,565.00	2,693.25
LOOP Surface Lease	18,781.59	19,596.83	20,337.73	21,005.61	21,765.08
Bankston Fishing Club	7,927.22	10,781.02	13,804.90	14,081.00	14,362.62
Oyster Leases	807.20	613.53	568.50	443.50	351.50
Stone Energy Surface Lease	19,722.00	20,348.10	20,420.51	21,441.53	22,513.61
Other Income	332.83		236.15	103.52	30.00
Global Geophysical *			315,200.00		
Entergy Servitude *				2,500.00	
Chevron Pipeline ROW	1,000.00	11,000.00	500.00	500.00	500.00
BP Claims Proceeds	216,087.22	713,757.90	549,451.57	703,435.35	5,221.34
* ONE TIME PAYMENT					

2014 EXPENSE NOTES:

- * Based on 500 miles per month @\$0.56 per mile
- ** Includes Bank Charges, Supplies (paper, stationary), Cell Phone & Other Office Overhead: Copier (leasing & maintenance), IT Services, 3 parking spots, 1 office gym membership & Secretary Treasurer Search.
- *** Includes Legal: \$105,000; Surveillance: \$38,500; Tax Preparation: \$4,600; a Lobbyist: \$30,000; and Meeting Transcripts: \$25,000.
- + Salaries/Wages are subject to change pending completion of the Secretary Treasurer search. They have been changed to reflect interim pay raises which were effective January 27, 2013.
- ++ Subject to change should final ruling on public/private status of Wisner change. A "Yellowbook" audit would be more expensive. Includes \$2,200 balance from 2012 Audit which was presented in January 2014.

WISNER DONATION ACTUAL EXPENSES 2010—2014

ITEM	2010	2011	2012	2013	2014 BUDGET	2014 ACTUAL	2014 VARIANCE
AUTO MILEAGE*/ PARKING	\$1,731.20	\$1,500.41	\$1,133.64	\$1,254.20	\$3,360.00	\$1,881.94	(\$1,478.06)
TRAVEL (LDG/ MEALS)	488.05	223.08	180.96	486.84	1,000.00	467.31	(532.69)
SECRETARIAL	72,602.71	71,747.39	60,979.11	5,660.57	64,110.95	-	(64,110.95)
BENEFITS	17,424.64	17,219.38	14,634.98	1,358.54	15,386.63	-	(15,386.63)
FSA	(\$720.91)	(683.83)	8.86	-	-	-	-
POP	(\$0.26)	(99.76)	(976.16)	1,075.92	-	-	-
SALARY SEC. TREASURER	144,909.03	140,409.14	101,120.08	124,523.20	104,000.00	99,258.37	(4,741.63)
BENEFITS	34,778.17	33,698.19	24,268.82	29,885.58	24,960.00	24,452.24	(507.76)
FSA	-	(390.30)	265.31	(153.26)	-	-	-
POP	131.60	296.74	(374.74)	(93.96)	-	-	-
FILE CLERK	2,562.91	-	-	-	-	-	-
LEASE RECORDS ADMINISTRATOR	10,302.91	36,556.10	36,929.80	56,907.95	73,008.00	61,538.26	(11,469.74)
FSA				(165.20)	-	233.99	233.99
ADMIN ASSIS- TANT				29,021.27	33,792.00	33,177.76	(614.24)
BENEFITS					4,896.00	4,617.36	(278.64)
PAYROLL COSTS/ FEES	20,813.68	22,590.60	22,278.76	15,478.04	31,000.00	20,167.52	(10,832.48)
DUES/ SUBSCRIPTIONS	4,187.87	2,928.98	2,969.79	2,610.33	4,200.00	2,989.16	(1,210.84)
INSURANCE (WC/ FID BOND)	4,434.00	4,715.05	5,974.00	6,922.00	7,500.00	7,766.00	266.00
OFFICE EXP**	18,194.25	23,997.46	21,402.01	34,423.69	38,000.00	22,547.40	(15,452.60)
LEASE - OFFICE SPACE		7,767.48	15,534.96	15,534.96	21,752.25	22,782.31	1,030.06
POSTAGE/ PRINTING	2,288.57	2,499.32	2,846.89	2,299.88	4,000.00	2,168.82	(1,831.18)
AUDITS	35,200.00	11,400.00	32,900.00	6,000.00	10,700.00	11,450.00	750.00
PROFESSIONAL FEES***	120,012.92	126,829.68	104,374.34	239,489.95	204,000.00	231,891.99	27,891.99
SEMINARS	888.00	1,471.00	609.00	1,209.41	1,500.00	1,210.96	(289.04)
OIL SPILL EXPENSES	461,961.21	1,289,119.46	1,002,531.53	95,480.21	32,077.17	16,810.91	(15,266.26)
RECONCILIATION DISCREPANCY		72.00	-	-	-	-	-
TOTAL	\$952,190.55	\$1,793,867.57	\$1,449,591.94	\$669,986.21	\$679,243.00	\$565,412.30	(\$113,830.70)
EXPENSES minus OIL SPILL EXPENSES	\$490,229.34	\$504,748.11	\$447,060.41	\$574,506.00	\$647,165.83	\$548,601.39	(\$98,564.44)

EDWARD WISNER DONATION ADVISORY COMMITTEE BP REIMBURSEMENTS AND EXPENSES 2014

CLAIMS INCOME	ACTUAL	BUDGET
Insurance Proceeds	\$5,221.34	\$24,000.00
Total Income	<u>\$5,221.34</u>	<u>\$24,000.00</u>
EXPENSES		
Auto Mileage/Parking	\$182.02	\$1,695.00
Tolls (Geaux Pass)	3.00	60.00
Travel (Ldg/Meals)	-	550.00
Secretarial	-	797.07
Benefits	-	191.30
Salary Secretary Treasurer	4,233.38	21,866.60
Benefits	1,016.01	5,247.99
File Clerk	-	
Lease Records Administrator	-	1,609.21
Payroll Costs/Fees	-	
Dues/Subscriptions	-	
Insurance	-	
Office Expense	-	
Postage/Printing	-	60.00
Professional fees		
FETI Investigations		
Simon Peragine		
Waltzer & Wiygul		
Experts Fees	11,379.50	
Aero-Data Corporation, LLC		
EMC		
Seminars		
Total Expenses	<u>\$16,813.91</u>	<u>\$32,077.17</u>
	<u>(\$11,592.57)</u>	<u>(\$8,077.17)</u>

UNREIMBURSED EXPENSES

The Committee set aside \$160,000 to fund three projects billable to BP under the Access Agreement.

Jeffress Williams - Sand Remediation	\$90,000.00
Morris P. Hebert - Mag Run for t-posts	16,300.00
Dr. John Pardue - Oil Remediation	<u>54,000.00</u>
	\$160,300.00

EDWARD WISNER DONATION ADVISORY COMMITTEE ESTIMATED BP REIMBURSEMENTS AND EXPENSES 2015

CLAIMS INCOME

Insurance Proceeds	\$160,300.00
Total Income	<u>\$160,300.00</u>

EXPENSES

Auto Mileage/Parking		
Tolls (Geaux Pass)		
Travel (Ldg/Meals)		
Secretarial		
Benefits		
Salary Secretary Treasurer		
Benefits		
File Clerk		
Lease Records Administrator		
Payroll Costs/Fees		
Dues/Subscriptions		
Insurance		
Office Expense		
Postage/Printing		
Professional fees		
FETI Investigations		
Simon Peragine		
Waltzer & Wiygul		
Experts Fees	148,920.50	
Aero-Data Corporation, LLC		
EMC		
Seminars		
Total Expenses	<u>\$ 148,920.50</u>	<u>\$11,379.50</u>

FIGURE 57 — Sand Fencing on CAM I Area
September 4, 2014
Photo Courtesy of L. Amanda Phillips



EDWARD WISNER DONATION ADVISORY COMMITTEE 2015 ESTIMATED INCOME

	JAN	FEB	MAR	APR	MAY	JUN
SHORELINE ROYALTY	\$24,000.00	\$24,000.00	\$24,000.00	\$24,000.00	\$24,000.00	\$24,000.00
CHEVRON ROYALTY	54,000.00	54,000.00	54,000.00	54,000.00	54,000.00	54,000.00
HILCORP ENERGY ROYALTY	36.00	36.00	36.00	36.00	36.00	36.00
GLPC	248,000.00	248,000.00	248,000.00	198,400.00	198,400.00	198,400.00
CAMPS - ALL	70,000.00	7,512.00	4,590.00	3,703.00	2,509.00	2,173.00
PLAINS SURFACE LEASE			3,307.50			
BANKSTON SPORT FISHING CLUB						14,349.87
ENERGY XXI (ENERGY PARTNERS)		2,877.91				
TRAPPING LEASES	800.00					
CHEVRON USA MINERAL LEASE						31,000.00
TALOS ENERGY (STONE ENERGY)						
CHEVRON USA - NORM						
CHEVRON PIPELINE SURFACE LEASE						
LOOP - SHELL PIPELINE				13,442.87		
OYSTER LEASES						
CHEVRON TIMBALIER PIPELINE ROW						
INTEREST INCOME	3.70	3.70	3.70	3.70	3.70	3.70
OTHER						
BP CLAIMS PROCEEDS	6,300.00	29,369.00	13,900.00			23,187.84
MONTHLY TOTAL	\$413,139.70	\$ 365,798.61	\$ 347,837.20	\$ 293,585.57	\$ 278,948.70	\$ 347,150.41

<i>INCOME MINUS BP PROCEEDS</i>	<i>\$396,839.70</i>	<i>\$ 336,429.61</i>	<i>\$ 333,937.20</i>	<i>\$ 293,585.57</i>	<i>\$ 278,948.70</i>	<i>\$ 323,962.57</i>
--	----------------------------	-----------------------------	-----------------------------	-----------------------------	-----------------------------	-----------------------------

EDWARD WISNER DONATION ADVISORY COMMITTEE 2015 ESTIMATED INCOME

JUL	AUG	SEPT	OCT	NOV	DEC	TOTAL
\$24,000.00	\$24,000.00	\$24,000.00	\$24,000.00	\$24,000.00	\$24,000.00	\$ 288,000.00
54,000.00	54,000.00	54,000.00	32,500.00	32,500.00	32,500.00	583,500.00
36.00	36.00	36.00	36.00	36.00	36.00	432.00
198,400.00	198,400.00	198,400.00	198,400.00	198,400.00	198,400.00	2,529,600.00
3,152.00	199.00	750.00	2,907.00	6,181.00	58,140.00	161,816.00
23,638.70						26,946.20
						14,349.87
						2,877.91
	3,350.88	15,438.08	1,800.00			21,388.96
						31,000.00
23,638.70						23,638.70
		19,172.00				19,172.00
		290,428.11				290,428.11
				8,900.00		22,342.87
					353.00	353.00
500.00						500.00
3.70	3.70	3.70	3.70	3.70	3.70	44.40
						-
77,243.16						160,000.00
\$ 404,612.26	\$ 279,989.58	\$ 602,227.89	\$ 259,646.70	\$ 270,020.70	\$ 313,432.70	\$ 4,176,390.02

\$ 327,369.10	\$ 279,989.58	\$ 602,227.89	\$ 259,646.70	\$ 270,020.70	\$ 313,432.70	\$ 4,016,390.02
----------------------	----------------------	----------------------	----------------------	----------------------	----------------------	------------------------

EDWARD WISNER DONATION ADVISORY COMMITTEE 2015 APPROVED BUDGET

ITEM	ANNUAL	JAN EXP	FEB EXP	MAR EXP	APR EXP	MAY EXP
AUTO MILEAGE*/PARKING	\$3,450.00	\$ 131.44	\$ 406.49	\$ 190.85		
TRAVEL (LDG/MEALS)	\$1,000.00	249.08	120.81			
SECRETARIAL +	64,110.95					
BENEFITS	15,386.63					
SALARY SEC/TREASURER	108,160.00	8,000.00	8,000.00	8,000.00		
BENEFITS	25,958.40	1,920.00	1,920.00	1,920.00		
LEASE RECORDS ADMINISTRATOR +	75,928.32	3,974.67	4,337.50	5,079.22		
401 (K)		542.01	591.48	692.62		
ADMINISTRATIVE ASSISTANT	32,448.00	1,912.50	2,298.75	2,107.50		
BENEFITS	7,787.52	459.00	551.70	505.80		
PAYROLL COSTS/FEES	31,000.00	1,856.92	1,716.15	1,711.72		
DUES/SUBSCRIPTIONS	4,000.00	2,000.00				
INSURANCE (WC/FID BOND)	7,800.00			(1,394.00)		
OFFICE EXP**	26,500.00	1,780.14	2,532.00	2,243.51		
LEASE - OFFICE SPACE	23,000.00	1,694.58	889.38	1,619.58		
POSTAGE/PRINTING	4,000.00	224.99	340.26	189.10		
AUDITS ++	9,000.00					
PROFESSIONAL FEES***	332,400.00	36,702.81	26,730.42	27,957.20		
SEMINARS	1,500.00			30.00		
OIL SPILL EXPENSES	148,920.50	19,524.17	56,000.00	27,249.00		
401 (K)						
RECONCILIATION DISCREPANCY						
TOTAL	\$ 922,350.32	\$ 80,972.31	\$106,434.94	\$ 78,102.10	\$ -	\$ -

EXPENSES minus OIL SPILL EXPENSES	\$ 773,429.82	\$ 61,448.14	\$ 50,434.94	\$ 50,853.10	\$ -	\$ -
-----------------------------------	---------------	--------------	--------------	--------------	------	------

NOTES:

* Based on 500 miles per month @ \$0.575 per mile

** Includes Bank Charges, Supplies (paper, stationary), Cell Phone, & Other Office Overhead: Copier (leasing & maintenance), IT services, 3 parking spots, 2 office gym memberships.

*** Includes Legal: \$122,000; Surveillance: \$162,500; Tax Preparation: \$4,900; a Lobbyist: \$30,000, and Meeting Transcripts: \$13,000.

+ Reflects interim pay raises which were effective January 27, 2013 .

++ Subject to change, a "Yellowbook" audit would be more expensive. Priced for a private entity and not a governmental entity.

EDWARD WISNER DONATION ADVISORY COMMITTEE 2015 APPROVED BUDGET

JUN EXP	JUL EXP	AUG EXP	SEPT EXP	OCT EXP	NOV EXP	DEC EXP	ACTUAL TOTAL	BUDGET TOTAL	VARIANCE
							\$ 728.78	\$3,450.00	(\$2,721.22)
							\$ 369.89	\$1,000.00	(\$630.11)
							\$ -	\$64,110.95	(\$64,110.95)
							\$ -	\$15,386.63	(\$15,386.63)
							\$ 24,000.00	\$108,160.00	(\$84,160.00)
							\$ 5,760.00	\$25,958.40	(\$20,198.40)
							\$ 13,391.39	\$75,928.32	(\$62,536.93)
							\$ 1,826.11	-	(\$1,826.11)
							\$ 6,318.75	\$32,448.00	(\$26,129.25)
							\$ 1,516.50	\$7,787.52	(\$6,271.02)
							\$ 5,284.79	\$31,000.00	(\$25,715.21)
							\$ 2,000.00	\$4,000.00	(\$2,000.00)
							\$ (1,394.00)	\$7,800.00	(\$9,194.00)
							\$ 6,555.65	\$26,500.00	(\$19,944.35)
							\$ 4,203.54	\$23,000.00	(\$18,796.46)
							\$ 754.35	\$4,000.00	(\$3,245.65)
							\$ -	\$9,000.00	(\$9,000.00)
							\$ 91,390.43	\$332,400.00	(\$241,009.57)
							\$ 30.00	\$1,500.00	(\$1,470.00)
							\$ 102,773.17	\$148,920.50	(\$46,147.33)
							\$ -		\$0.00
							\$ -		\$0.00
\$ -	\$ -	\$ -	\$ -	\$ -	\$ -	\$ -	\$ 265,509.35	\$ 922,350.32	(\$656,840.97)

\$ -	\$ -	\$ -	\$ -	\$ -	\$ -	\$ -	\$ 162,736.18	\$ 773,429.82	(\$610,693.64)
------	------	------	------	------	------	------	---------------	---------------	----------------

**FIGURE 58 — Well
Head—Leeville Area**
May 7, 2014
Photo Courtesy of
L. Amanda Phillips



2015 REVISED MEETING SCHEDULE EDWARD WISNER DONATION ADVISORY COMMITTEE

(All meetings are held on a Tuesday EXCEPT as noted below)

JANUARY 27	12:00 NOON	REGULAR MEETING
FEBRUARY 24	12:00 NOON	REGULAR MEETING ¹
MARCH 31	10:30 AM 12:00 NOON	ANNUAL REVIEW REGULAR MEETING
FRIDAY, APRIL 24	12:00 NOON	REGULAR MEETING
FRIDAY, MAY 29	12:00 NOON	REGULAR MEETING ²
JUNE 30	12:00 NOON	REGULAR MEETING
JULY	NO MEETING	
AUGUST 25	12:00 NOON	REGULAR MEETING
SEPTEMBER 29	12:00 NOON	REGULAR MEETING
OCTOBER 27	12:00 NOON	REGULAR MEETING
NOVEMBER 17	12:00 NOON	REGULAR MEETING ³
DECEMBER	NO MEETING	

*** ALL MEETINGS WILL BE HELD AT THE ART'S COUNCIL'S CONFERENCE ROOM
935 GRAVIER STREET, SUITE 850, UNLESS OTHERWISE NOTIFIED ***

¹ Mardi Gras is Tuesday, February 17.

² Memorial Day is Monday, May 25, so the meeting is being scheduled for the Tuesday before Memorial Day weekend.

³ Thanksgiving Day is Thursday, November 26, so the meeting is being scheduled for the week before Thanksgiving.

COMMITTEE MEMBERS

Alternates

For Tulane University:

Mr. Anthony P. Lorino

Senior VP for Operations and CFO

6823 St. Charles Avenue

204 Gibson Hall

New Orleans, LA 70118

alorino@tulane.edu

504/862.8698 Office

504/862.8927 Fax

Mr. Michael Peneguy

1541 Maplewood Drive

Slidell, LA 70458

Peneguy@bellsouth.net

985/649.1191 Home

985/649.2911 Fax

Mr. William Peneguy

P. O. Box 381

Gulfport, MS 39502

WAPCPA@bellsouth.net

Ronald Gardner

Vice Chancellor

Administrative, Community & Security Affairs

LSU Health Sciences Center

433 Bolivar Street, Suite 816C

New Orleans, LA 70112

rgardner@lsuhsc.edu

504/568.4810 Office

504/568.8807 Fax

504/377.8093 Mobile

Rhonda Green

rgreen3@lsuhsc.edu

225/354.7006 Office

225/354.4953 Fax

504/812-3737 Mobile

Mayor Mitchell J. Landrieu

Suchitra Satpathi

1300 Perdido Street

Room 2E04, City Hall

sjsatpathi@nola.gov

504/658.4928 Office

225/229.8994 Cell

Major David Worthy

Salvation Army

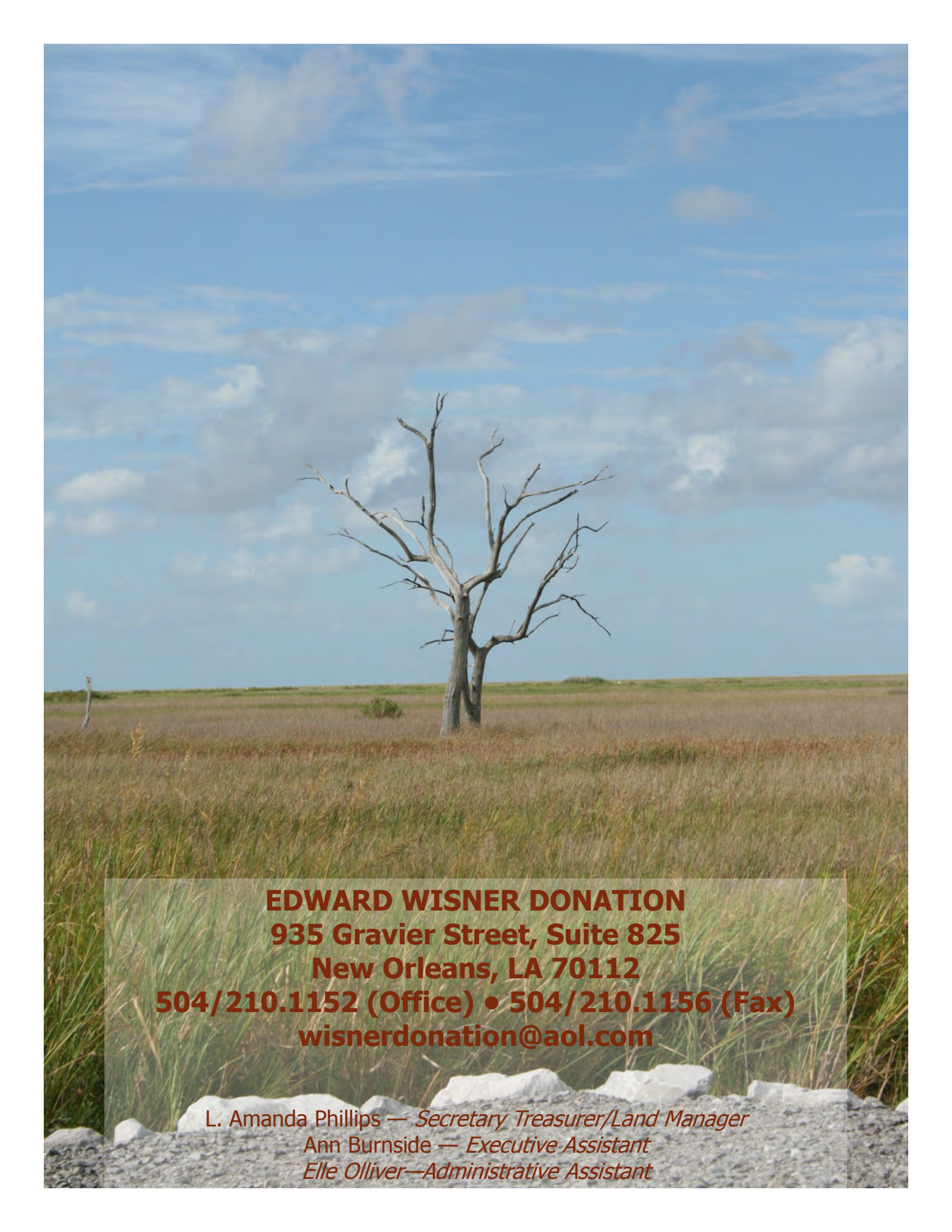
Post Office Box 13808

New Orleans, LA 70185-3808

David_Worthy@uss.salvationarmy.org

504/202.6154 Cell

504/891.1444 Fax



EDWARD WISNER DONATION
935 Gravier Street, Suite 825
New Orleans, LA 70112
504/210.1152 (Office) • 504/210.1156 (Fax)
wisnerdonation@aol.com

L. Amanda Phillips — *Secretary Treasurer/Land Manager*
Ann Burnside — *Executive Assistant*
Elle Olliver — *Administrative Assistant*