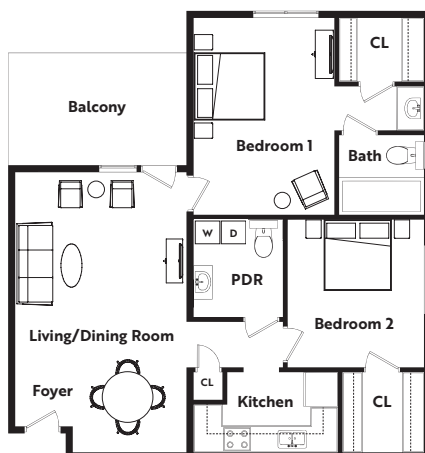




BROOKRIDGE
A THRIVEMORE COMMUNITY

JUNIPER

2 BEDROOM, 1.5 BATH - APARTMENT • 900 SQ. FT.



- 1 Living/Dining Room • 12'4" x 20'4"**
- 2 Kitchen • 10'6" x 6'0"**

- 3 Bedroom 1 • 10'0" x 14'4"**
- 4 Bedroom 2 • 9'6" x 10'6"**

