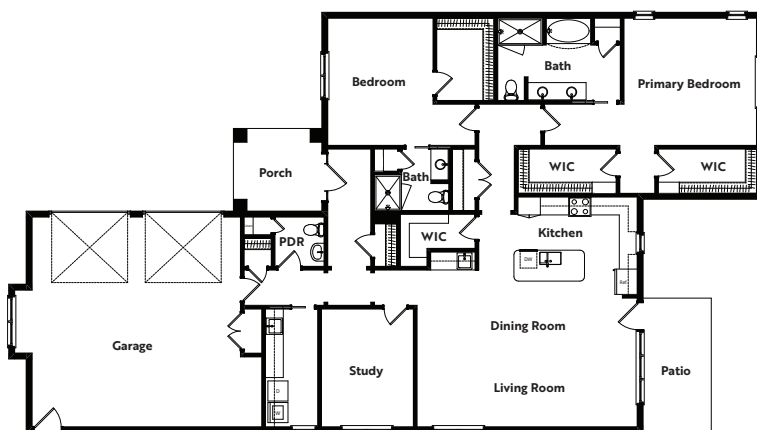




**BROOKRIDGE**  
A THRIVEMORE COMMUNITY

**WILLOW**

**2 BEDROOM, 2.5 BATH - GARDEN HOME**  
**2,100 SQ. FT.**



**1 Living/Dining Room • 25'0" x 15'4"**

**2 Study/Den • 10'6" x 13'4"**

**3 Bedroom 1 • 15'0" x 14'4"**

**4 Bedroom 2 • 12'0" x 14'4"**

**5 Garage • 23'6" x 23'6"**

