



# Commercial Washroom Units



Quality

Professional

Trustworthy

Reliable

Innovative



Thank you for considering HERAUF MODULAR for your modular washroom needs. Enclosed is an information package that includes sample layouts, specifications, and a preliminary quote to support your planning process.

Our modular washrooms are an ideal solution for communities looking to enhance public spaces with clean, accessible, and low-maintenance facilities. These units are well-suited for parks, splash pads, outdoor rinks, ball diamonds, recreation courts, and community gathering areas.

Each unit is built with durable materials and designed for long-term use. We offer various layout options, including barrier-free models to meet accessibility requirements, and we can tailor the design to meet the specific needs of your location and users.

Once you've had a chance to review the information, we'd be happy to connect to discuss your goals, answer any questions, and prepare a detailed quote and project timeline. From design to delivery and installation, our team is committed to making the process smooth and efficient.

Thank you again for considering HERAUF MODULAR. We look forward to working with you to create a practical and lasting addition to your community.

Sincerely,  
The Herauf Modular Team





# Washrooms & Shower Units



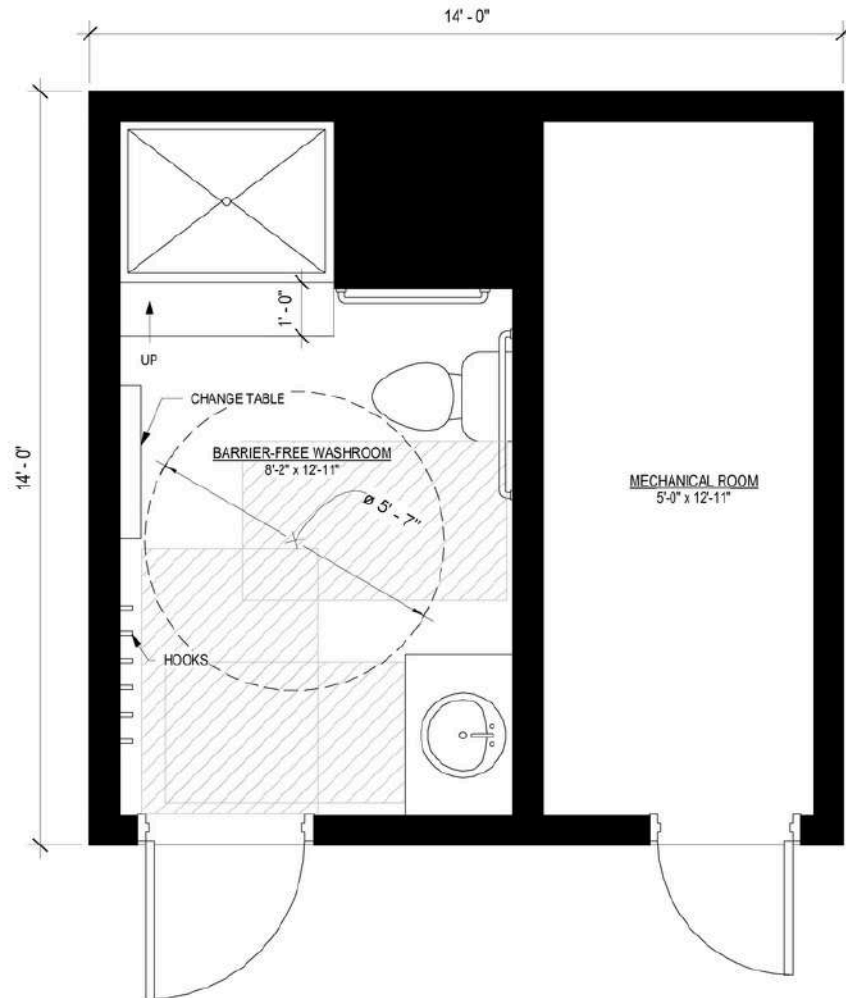
Quality

Professional

Trustworthy

Reliable

Innovative



**1 MAIN FLOOR PLAN**  
1/2" = 1'-0"



# HERAUF MODULAR

261 SHERWOOD RD  
REGINA, SK  
S4P 3A2  
INFO@HERAUFMODULAR.COM

REVISIONS: DATE: APPROVED BY:

## DISCLAIMER:

1.THE DRAFTSPERSON ASSUMES NO RESPONSIBILITY OR LIABILITY FOR ANY ERRORS, EXCLUSIONS, OR INCIDENTAL, INDIRECT, OR IMPACTFUL DAMAGE RESULTING FROM THE USE OF THESE DRAWINGS OR THE INFORMATION GIVEN.

2.DRAWINGS ARE NOT TO BE SCALED

3.THE BUILDER IS TO COMPLY WITH NATIONAL BUILDING CODE OF CANADA PART 9.

4.ALL PLANS ARE DRAWN IN COMPLIANCE WITH THE NATIONAL BUILDING CODE OF CANADA. PLANS MUST BE REVIEWED BY A LOCAL BUILDING OFFICIAL PRIOR TO CONSTRUCTION DUE TO LOCAL BUILDING REQUIREMENTS, ZONING REGULATIONS, AND CLIMATIC FACTORS.

A LICENSED ARCHITECT OR ENGINEER MUST REVIEW AND ENGINEER ALL STRUCTURAL COMPONENTS.

6.HERAUF MODULAR RETAINS OWNERSHIP OF THE COPYRIGHT FOR THESE PLANS. WITHOUT PRIOR PERMISSION IN WRITING FROM HERAUF MODULAR, IT IS ENTIRELY PROHIBITED TO DUPLICATE THESE DRAWINGS, IN WHOLE OR IN PART.

LOCATION  
CANADA

BUILDER

HERAUF MODULAR

DESIGNED BY  
HERAUF MODULAR

DRAWN BY  
H. KOPEC

DRAWING TITLE  
MAIN FLOOR PLAN

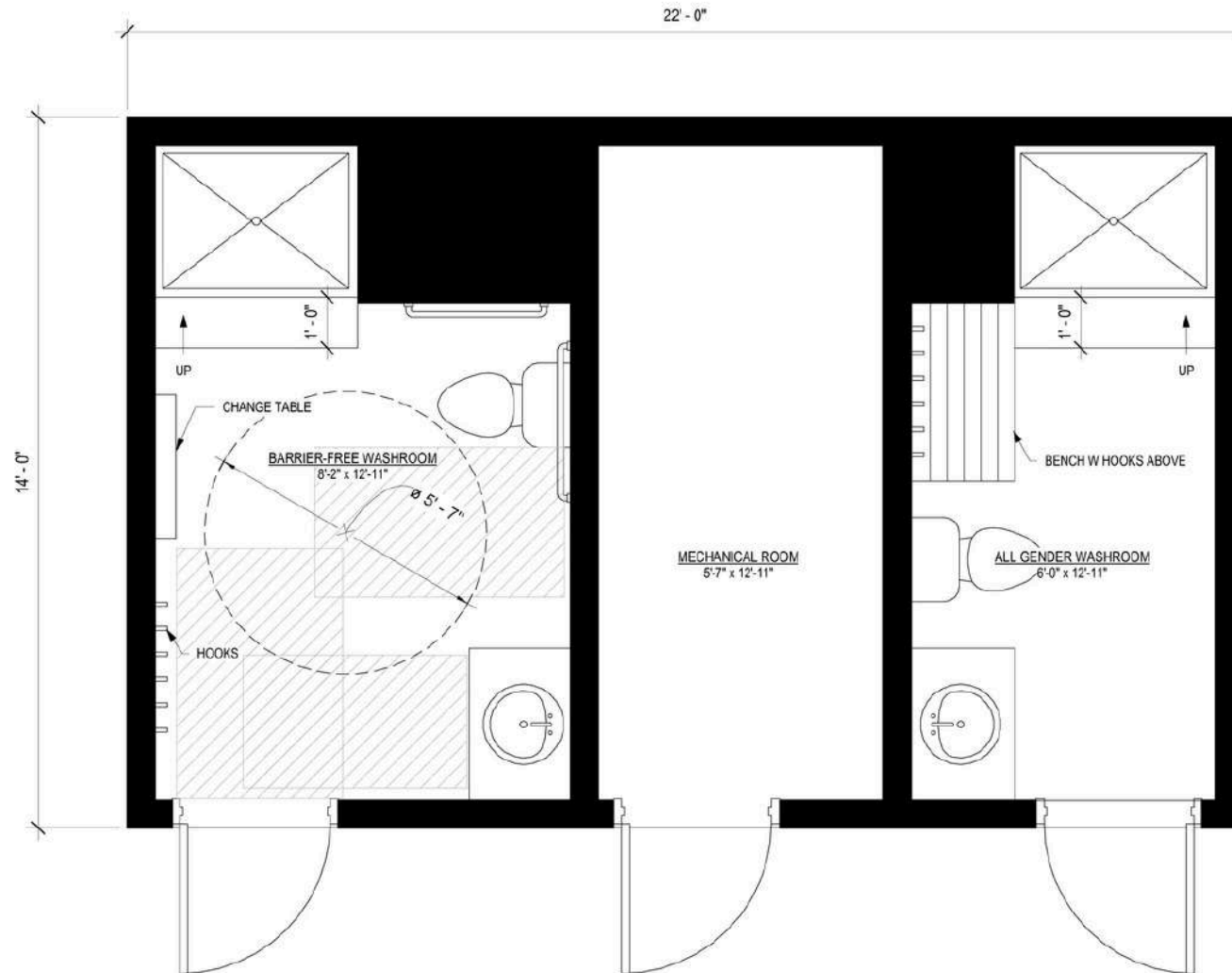
PROJECT NAME  
14'x14' WASHROOM & SHOWER

SHEET NO.

**A.1**

SCALE  
1/2" = 1'-0"

DATE  
JAN 16, 2025



1 MAIN FLOOR PLAN  
1/2" = 1'-0"



# HERAUF MODULAR

261 SHERWOOD RD  
REGINA, SK  
S4P 3A2  
INFO@HERAUFMODULAR.COM

REVISIONS: DATE: APPROVED BY:

## DISCLAIMER:

1.THE DRAFTSPERSON ASSUMES NO RESPONSIBILITY OR LIABILITY FOR ANY ERRORS, EXCLUSIONS, OR INCIDENTAL, INDIRECT, OR IMPACTFUL DAMAGE RESULTING FROM THE USE OF THESE DRAWINGS OR THE INFORMATION GIVEN.

2.DRAWINGS ARE NOT TO BE SCALED

3.THE BUILDER IS TO COMPLY WITH NATIONAL BUILDING CODE OF CANADA PART 9.

4.ALL PLANS ARE DRAWN IN COMPLIANCE WITH THE NATIONAL BUILDING CODE OF CANADA. PLANS MUST BE REVIEWED BY A LOCAL BUILDING OFFICIAL PRIOR TO CONSTRUCTION DUE TO LOCAL BUILDING REQUIREMENTS, ZONING REGULATIONS, AND CLIMATIC FACTORS.

A LICENSED ARCHITECT OR ENGINEER MUST REVIEW AND ENGINEER ALL STRUCTURAL COMPONENTS.

6.HERAUF MODULAR RETAINS OWNERSHIP OF THE COPYRIGHT FOR THESE PLANS. WITHOUT PRIOR PERMISSION IN WRITING FROM HERAUF MODULAR, IT IS ENTIRELY PROHIBITED TO DUPLICATE THESE DRAWINGS, IN WHOLE OR IN PART.

LOCATION  
CANADA

BUILDER

HERAUF MODULAR

DESIGNED BY  
HERAUF MODULAR

DRAWN BY  
H. KOPEC

DRAWING TITLE  
MAIN FLOOR PLAN

PROJECT NAME  
14'x22' WASHROOM & SHOWER

SHEET NO.

A.1

SCALE  
1/2" = 1'-0"

DATE  
JAN 16, 2025



# Premium Builders

Quality

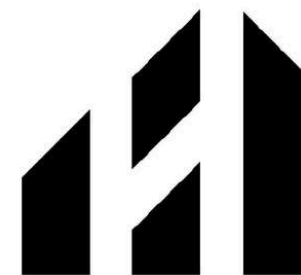
Professional

Trustworthy

Reliable

Innovative





# HERAUF MODULAR

261 SHERWOOD RD  
REGINA, SK  
S4P 3A2  
INFO@HERAUFMODULAR.COM

REVISIONS: DATE: APPROVED BY:

## DISCLAIMER:

1.THE DRAFTSPERSON ASSUMES NO RESPONSIBILITY OR LIABILITY FOR ANY ERRORS, EXCLUSIONS, OR INCIDENTAL, INDIRECT, OR IMPACTFUL DAMAGE RESULTING FROM THE USE OF THESE DRAWINGS OR THE INFORMATION GIVEN.

2.DRAWINGS ARE NOT TO BE SCALED

3.THE BUILDER IS TO COMPLY WITH NATIONAL BUILDING CODE OF CANADA PART 9.

4.ALL PLANS ARE DRAWN IN COMPLIANCE WITH THE NATIONAL BUILDING CODE OF CANADA. PLANS MUST BE REVIEWED BY A LOCAL BUILDING OFFICIAL PRIOR TO CONSTRUCTION DUE TO LOCAL BUILDING REQUIREMENTS, ZONING REGULATIONS, AND CLIMATIC FACTORS.

A LICENSED ARCHITECT OR ENGINEER MUST REVIEW AND ENGINEER ALL STRUCTURAL COMPONENTS.

6.HERAUF MODULAR RETAINS OWNERSHIP OF THE COPYRIGHT FOR THESE PLANS. WITHOUT PRIOR PERMISSION IN WRITING FROM HERAUF MODULAR, IT IS ENTIRELY PROHIBITED TO DUPLICATE THESE DRAWINGS, IN WHOLE OR IN PART.

LOCATION

CANADA

BUILDER

HERAUF MODULAR

DESIGNED BY

HERAUF MODULAR

DRAWN BY

H. KOPEC

DRAWING TITLE

MAIN FLOOR PLAN

PROJECT NAME

12'x26' WASHROOM & SHOWER

SHEET NO.

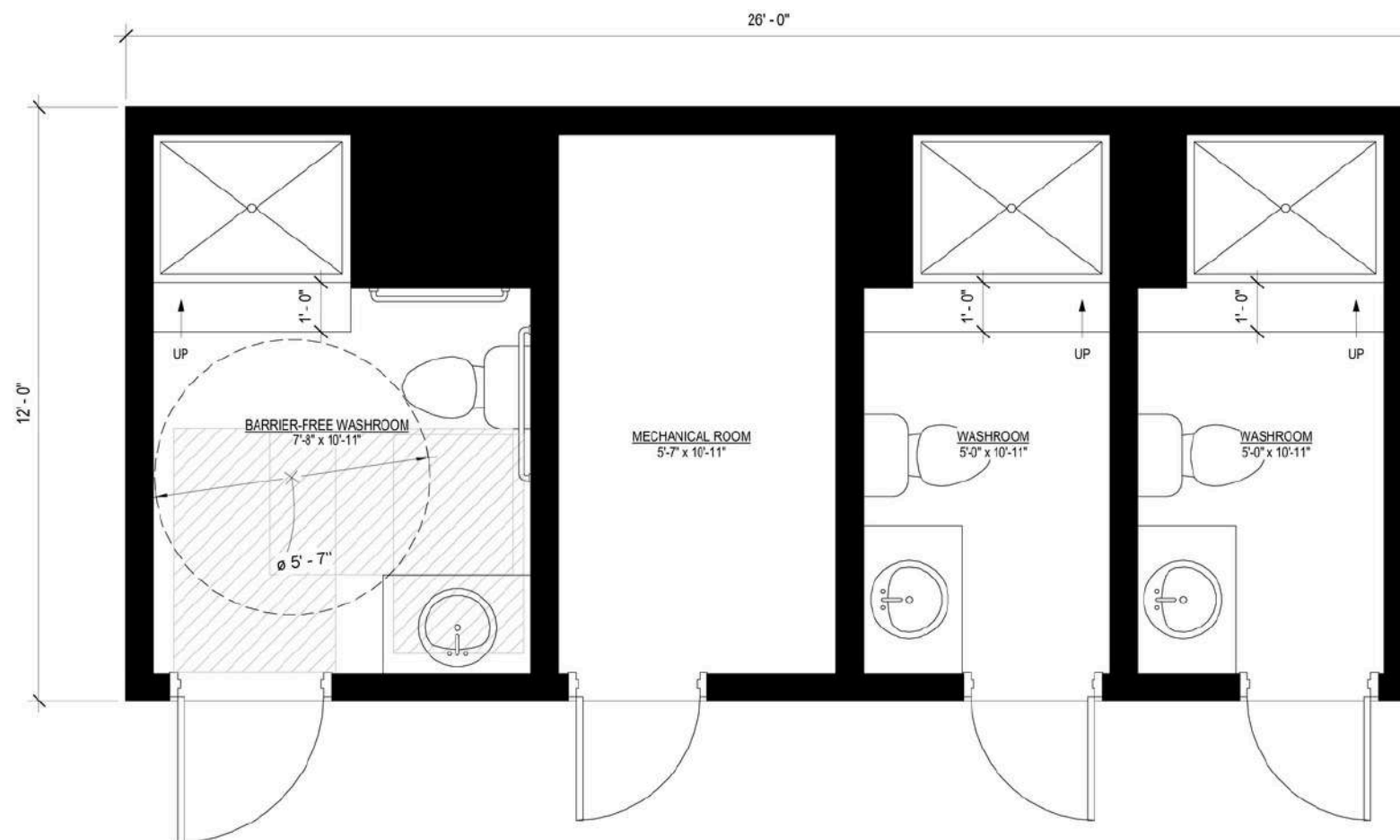
A.1

SCALE

1/2" = 1'-0"

DATE

JAN 17, 2025



## 1 MAIN FLOOR PLAN

1/2" = 1'-0"





# Shipping Coast To Coast



Quality

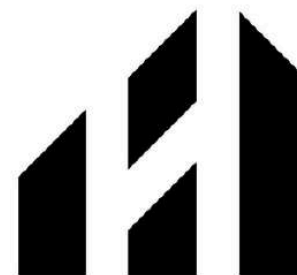
Professional

Trustworthy

Reliable

Innovative





# HERAUF MODULAR

261 SHERWOOD RD  
REGINA, SK  
S4P 3A2  
INFO@HERAUFMODULAR.COM

REVISIONS: DATE: APPROVED BY:

## DISCLAIMER:

1.THE DRAFTSPERSON ASSUMES NO RESPONSIBILITY OR LIABILITY FOR ANY ERRORS, EXCLUSIONS, OR INCIDENTAL, INDIRECT, OR IMPACTFUL DAMAGE RESULTING FROM THE USE OF THESE DRAWINGS OR THE INFORMATION GIVEN.

2.DRAWINGS ARE NOT TO BE SCALED

3.THE BUILDER IS TO COMPLY WITH NATIONAL BUILDING CODE OF CANADA PART 9.

4.ALL PLANS ARE DRAWN IN COMPLIANCE WITH THE NATIONAL BUILDING CODE OF CANADA. PLANS MUST BE REVIEWED BY A LOCAL BUILDING OFFICIAL PRIOR TO CONSTRUCTION DUE TO LOCAL BUILDING REQUIREMENTS, ZONING REGULATIONS, AND CLIMATIC FACTORS.

A LICENSED ARCHITECT OR ENGINEER MUST REVIEW AND ENGINEER ALL STRUCTURAL COMPONENTS.

6.HERAUF MODULAR RETAINS OWNERSHIP OF THE COPYRIGHT FOR THESE PLANS. WITHOUT PRIOR PERMISSION IN WRITING FROM HERAUF MODULAR, IT IS ENTIRELY PROHIBITED TO DUPLICATE THESE DRAWINGS, IN WHOLE OR IN PART.

LOCATION  
CANADA

BUILDER

HERAUF MODULAR

DESIGNED BY  
HERAUF MODULAR

DRAWN BY

H. KOPEC

DRAWING TITLE

MAIN FLOOR PLAN

PROJECT NAME

14'x32' WASHROOM & SHOWER

SHEET NO.

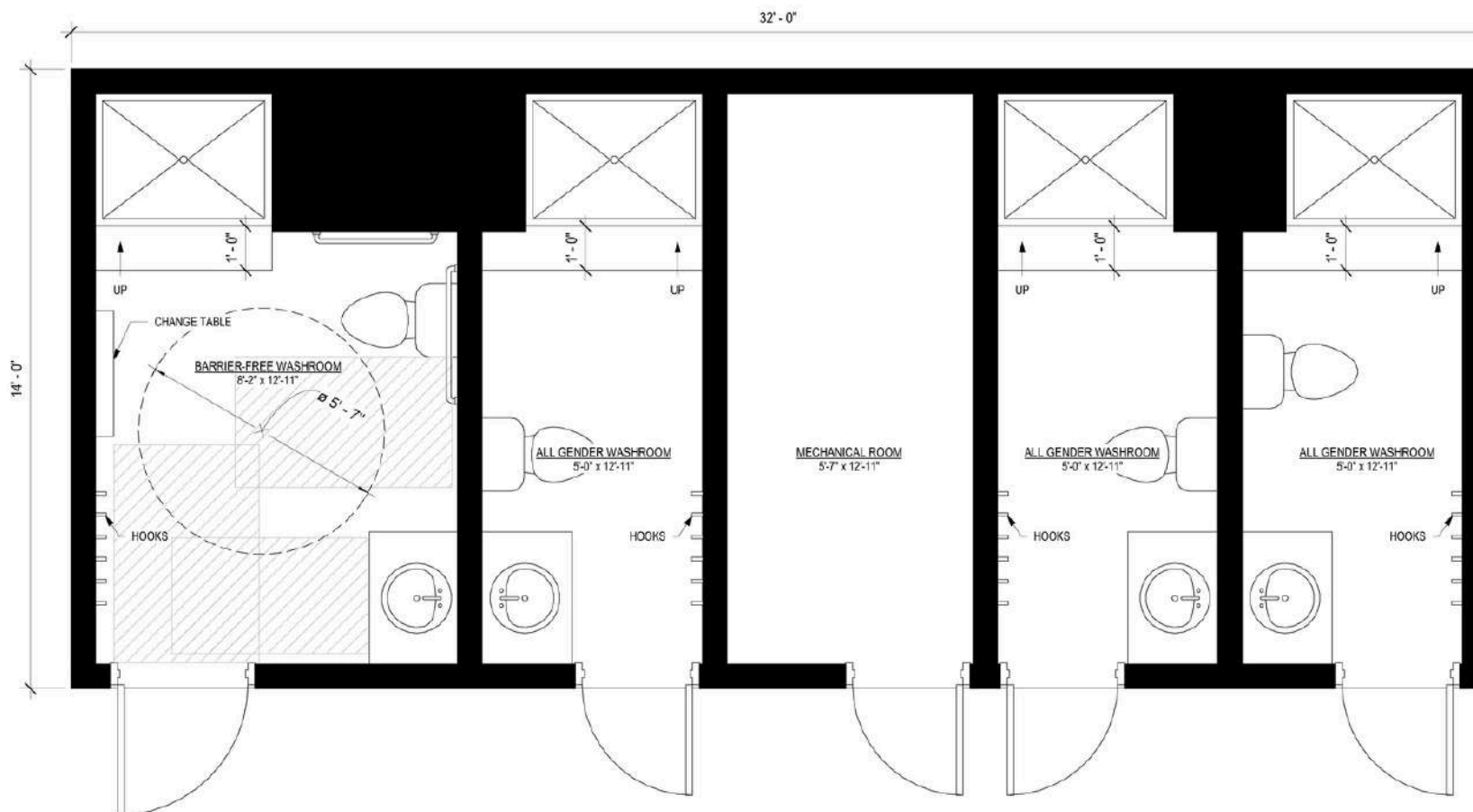
A.1

SCALE

1/2" = 1'-0"

DATE

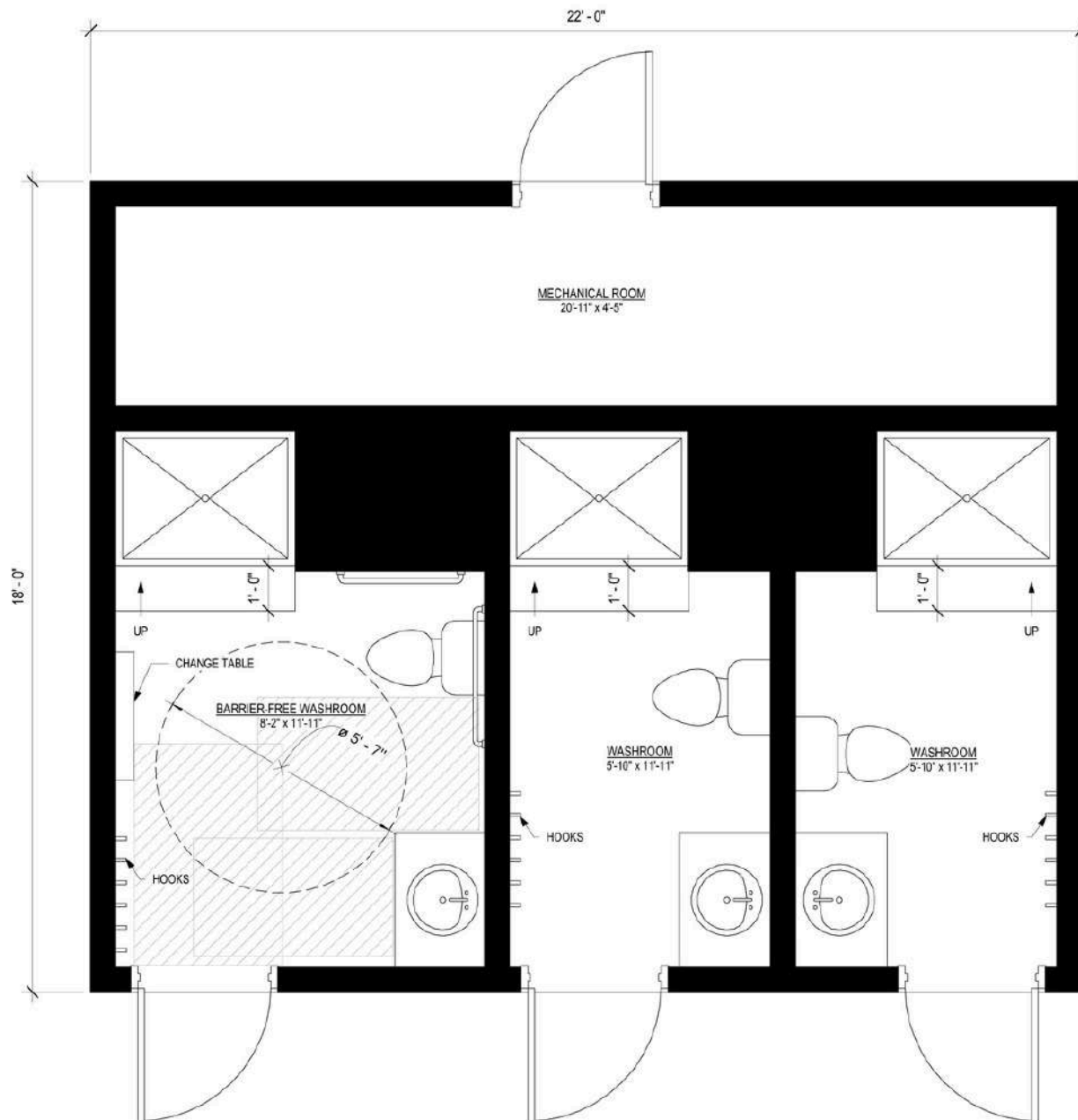
JAN 16, 2025



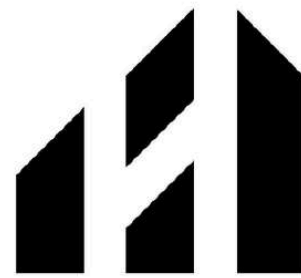
1

## MAIN FLOOR PLAN

1/2" = 1'-0"



1 MAIN FLOOR PLAN  
1/2" = 1'-0"



# HERAUF MODULAR

261 SHERWOOD RD  
REGINA, SK  
S4P 3A2  
INFO@HERAUFMODULAR.COM

REVISIONS: DATE: APPROVED BY:

## DISCLAIMER:

1.THE DRAFTSPERSON ASSUMES NO RESPONSIBILITY OR LIABILITY FOR ANY ERRORS, EXCLUSIONS, OR INCIDENTAL, INDIRECT, OR IMPACTFUL DAMAGE RESULTING FROM THE USE OF THESE DRAWINGS OR THE INFORMATION GIVEN.

2.DRAWINGS ARE NOT TO BE SCALED

3.THE BUILDER IS TO COMPLY WITH NATIONAL BUILDING CODE OF CANADA PART 9.

4.ALL PLANS ARE DRAWN IN COMPLIANCE WITH THE NATIONAL BUILDING CODE OF CANADA. PLANS MUST BE REVIEWED BY A LOCAL BUILDING OFFICIAL PRIOR TO CONSTRUCTION DUE TO LOCAL BUILDING REQUIREMENTS, ZONING REGULATIONS, AND CLIMATIC FACTORS.

A LICENSED ARCHITECT OR ENGINEER MUST REVIEW AND ENGINEER ALL STRUCTURAL COMPONENTS.

6.HERAUF MODULAR RETAINS OWNERSHIP OF THE COPYRIGHT FOR THESE PLANS. WITHOUT PRIOR PERMISSION IN WRITING FROM HERAUF MODULAR, IT IS ENTIRELY PROHIBITED TO DUPLICATE THESE DRAWINGS, IN WHOLE OR IN PART.

LOCATION  
CANADA

BUILDER

HERAUF MODULAR

DESIGNED BY  
HERAUF MODULAR

DRAWN BY  
H. KOPEC

DRAWING TITLE  
MAIN FLOOR PLAN

PROJECT NAME  
18'x22' WASHROOM & SHOWER

SHEET NO.

A.1

SCALE  
1/2" = 1'-0"

DATE  
JAN 17, 2025



# Washroom Units



Quality

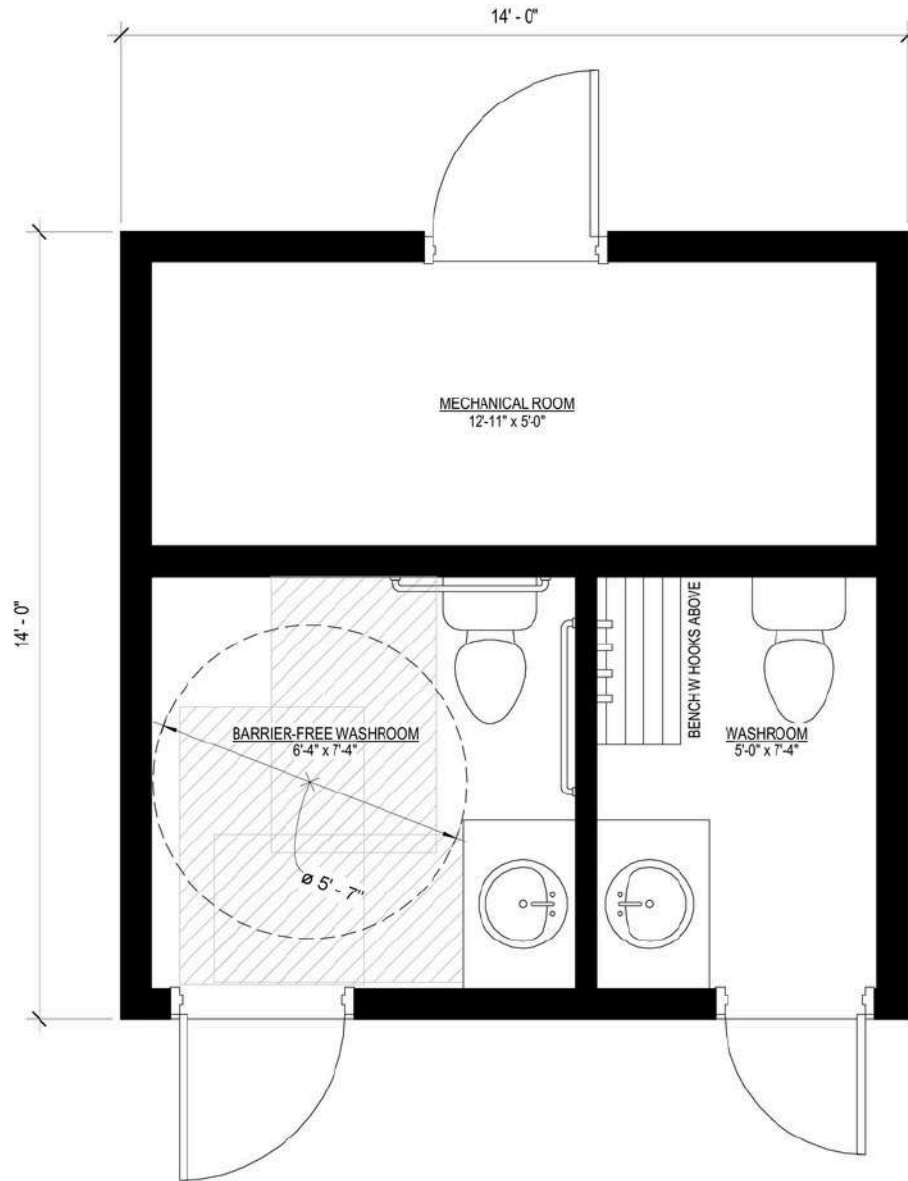
Professional

Trustworthy

Reliable

Innovative

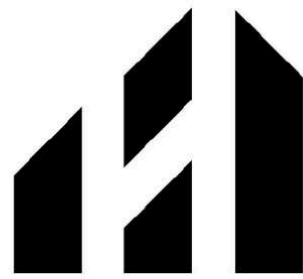




1

## MAIN FLOOR PLAN

1/2" = 1'-0"



# HERAUF MODULAR

261 SHERWOOD RD  
REGINA, SK  
S4P 3A2  
INFO@HERAUFMODULAR.COM

REVISIONS: DATE: APPROVED BY:

### DISCLAIMER:

1.THE DRAFTSPERSON ASSUMES NO RESPONSIBILITY OR LIABILITY FOR ANY ERRORS, EXCLUSIONS, OR INCIDENTAL, INDIRECT, OR IMPACTFUL DAMAGE RESULTING FROM THE USE OF THESE DRAWINGS OR THE INFORMATION GIVEN.

2.DRAWINGS ARE NOT TO BE SCALED

3.THE BUILDER IS TO COMPLY WITH NATIONAL BUILDING CODE OF CANADA PART 9.

4.ALL PLANS ARE DRAWN IN COMPLIANCE WITH THE NATIONAL BUILDING CODE OF CANADA. PLANS MUST BE REVIEWED BY A LOCAL BUILDING OFFICIAL PRIOR TO CONSTRUCTION DUE TO LOCAL BUILDING REQUIREMENTS, ZONING REGULATIONS, AND CLIMATIC FACTORS.

A LICENSED ARCHITECT OR ENGINEER MUST REVIEW AND ENGINEER ALL STRUCTURAL COMPONENTS.

6.HERAUF MODULAR RETAINS OWNERSHIP OF THE COPYRIGHT FOR THESE PLANS. WITHOUT PRIOR PERMISSION IN WRITING FROM HERAUF MODULAR, IT IS ENTIRELY PROHIBITED TO DUPLICATE THESE DRAWINGS, IN WHOLE OR IN PART.

LOCATION  
CANADA

BUILDER

HERAUF MODULAR

DESIGNED BY  
HERAUF MODULAR

DRAWN BY

H. KOPEC

DRAWING TITLE

MAIN FLOOR PLAN

PROJECT NAME

14'x14' WASHROOM

SHEET NO.

A.1

SCALE

1/2" = 1'-0"

DATE

JAN 16, 2025



Quick Install

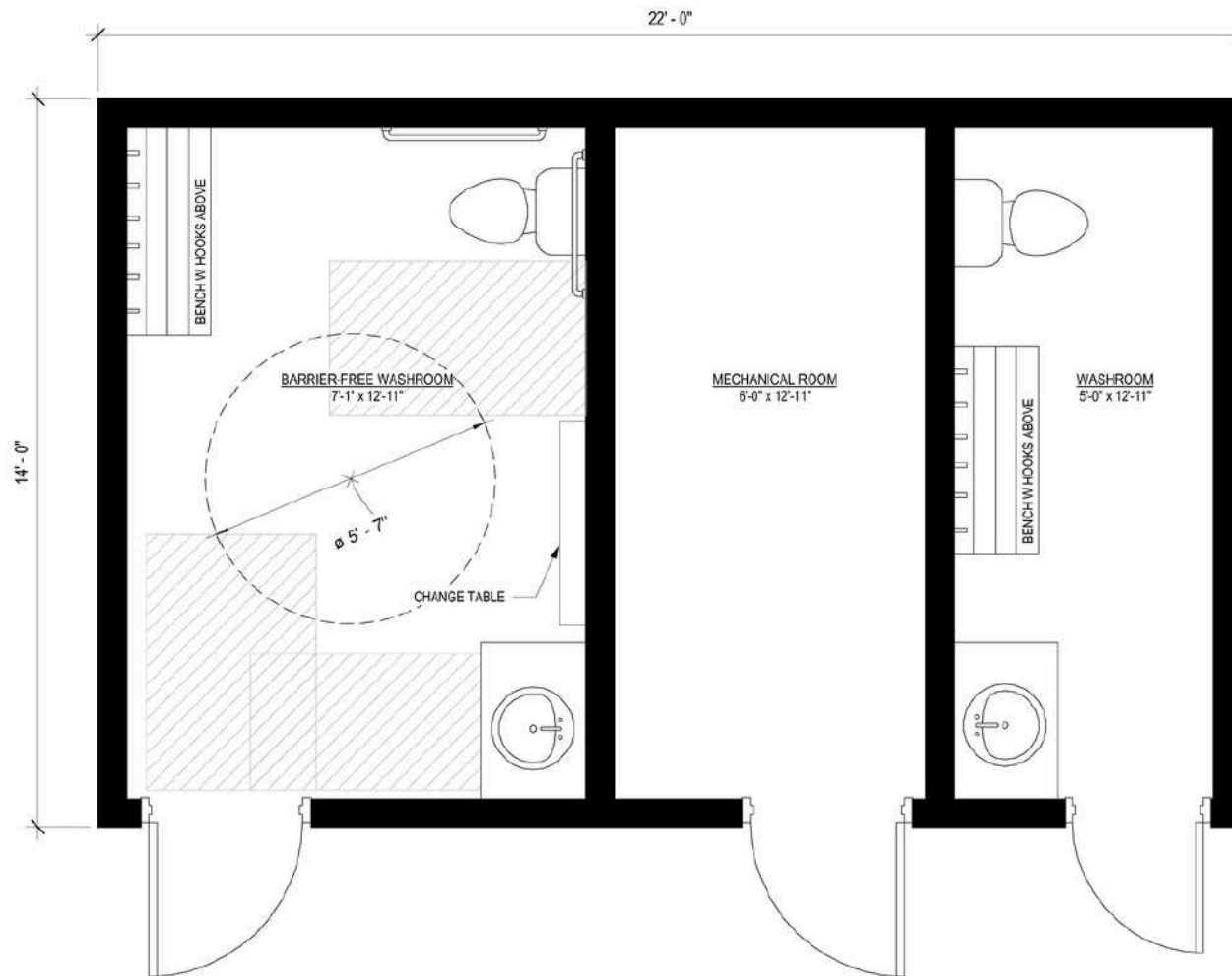
Quality

Professional

Trustworthy

Reliable

Innovative



1

## MAIN FLOOR PLAN

1/2" = 1'-0"



## HERAUF MODULAR

261 SHERWOOD RD  
REGINA, SK  
S4P 3A2  
INFO@HERAUFMODULAR.COM

REVISIONS: DATE: APPROVED BY:

### DISCLAIMER:

1.THE DRAFTSPERSON ASSUMES NO RESPONSIBILITY OR LIABILITY FOR ANY ERRORS, EXCLUSIONS, OR INCIDENTAL, INDIRECT, OR IMPACTFUL DAMAGE RESULTING FROM THE USE OF THESE DRAWINGS OR THE INFORMATION GIVEN.

2.DRAWINGS ARE NOT TO BE SCALED

3.THE BUILDER IS TO COMPLY WITH NATIONAL BUILDING CODE OF CANADA PART 9.

4.ALL PLANS ARE DRAWN IN COMPLIANCE WITH THE NATIONAL BUILDING CODE OF CANADA. PLANS MUST BE REVIEWED BY A LOCAL BUILDING OFFICIAL PRIOR TO CONSTRUCTION DUE TO LOCAL BUILDING REQUIREMENTS, ZONING REGULATIONS, AND CLIMATIC FACTORS.

A LICENSED ARCHITECT OR ENGINEER MUST REVIEW AND ENGINEER ALL STRUCTURAL COMPONENTS.

6.HERAUF MODULAR RETAINS OWNERSHIP OF THE COPYRIGHT FOR THESE PLANS. WITHOUT PRIOR PERMISSION IN WRITING FROM HERAUF MODULAR, IT IS ENTIRELY PROHIBITED TO DUPLICATE THESE DRAWINGS, IN WHOLE OR IN PART.

LOCATION  
CANADA

BUILDER

HERAUF MODULAR

DESIGNED BY  
HERAUF MODULAR

DRAWN BY  
H. KOPEC

DRAWING TITLE  
MAIN FLOOR PLAN

PROJECT NAME  
14X22 WASHROOM UNIT

SHEET NO.

A.2

SCALE  
1/2" = 1'-0"

DATE  
JAN 16, 2025





# Contained Mechanical



Quality

Professional

Trustworthy

Reliable

Innovative



# HERAUF MODULAR

261 SHERWOOD RD  
REGINA, SK  
S4P 3A2  
INFO@HERAUFMODULAR.COM

REVISIONS: DATE: APPROVED BY:

## DISCLAIMER:

1.THE DRAFTSPERSON ASSUMES NO RESPONSIBILITY OR LIABILITY FOR ANY ERRORS, EXCLUSIONS, OR INCIDENTAL, INDIRECT, OR IMPACTFUL DAMAGE RESULTING FROM THE USE OF THESE DRAWINGS OR THE INFORMATION GIVEN.

2.DRAWINGS ARE NOT TO BE SCALED

3.THE BUILDER IS TO COMPLY WITH NATIONAL BUILDING CODE OF CANADA PART 9.

4.ALL PLANS ARE DRAWN IN COMPLIANCE WITH THE NATIONAL BUILDING CODE OF CANADA. PLANS MUST BE REVIEWED BY A LOCAL BUILDING OFFICIAL PRIOR TO CONSTRUCTION DUE TO LOCAL BUILDING REQUIREMENTS, ZONING REGULATIONS, AND CLIMATIC FACTORS.

A LICENSED ARCHITECT OR ENGINEER MUST REVIEW AND ENGINEER ALL STRUCTURAL COMPONENTS.

6.HERAUF MODULAR RETAINS OWNERSHIP OF THE COPYRIGHT FOR THESE PLANS. WITHOUT PRIOR PERMISSION IN WRITING FROM HERAUF MODULAR, IT IS ENTIRELY PROHIBITED TO DUPLICATE THESE DRAWINGS, IN WHOLE OR IN PART.

## LOCATION

ALBERTA

## BUILDER

HERAUF MODULAR

DESIGNED BY  
HERAUF MODULAR

DRAWN BY  
H. KOPEC

DRAWING TITLE  
MAIN FLOOR PLAN

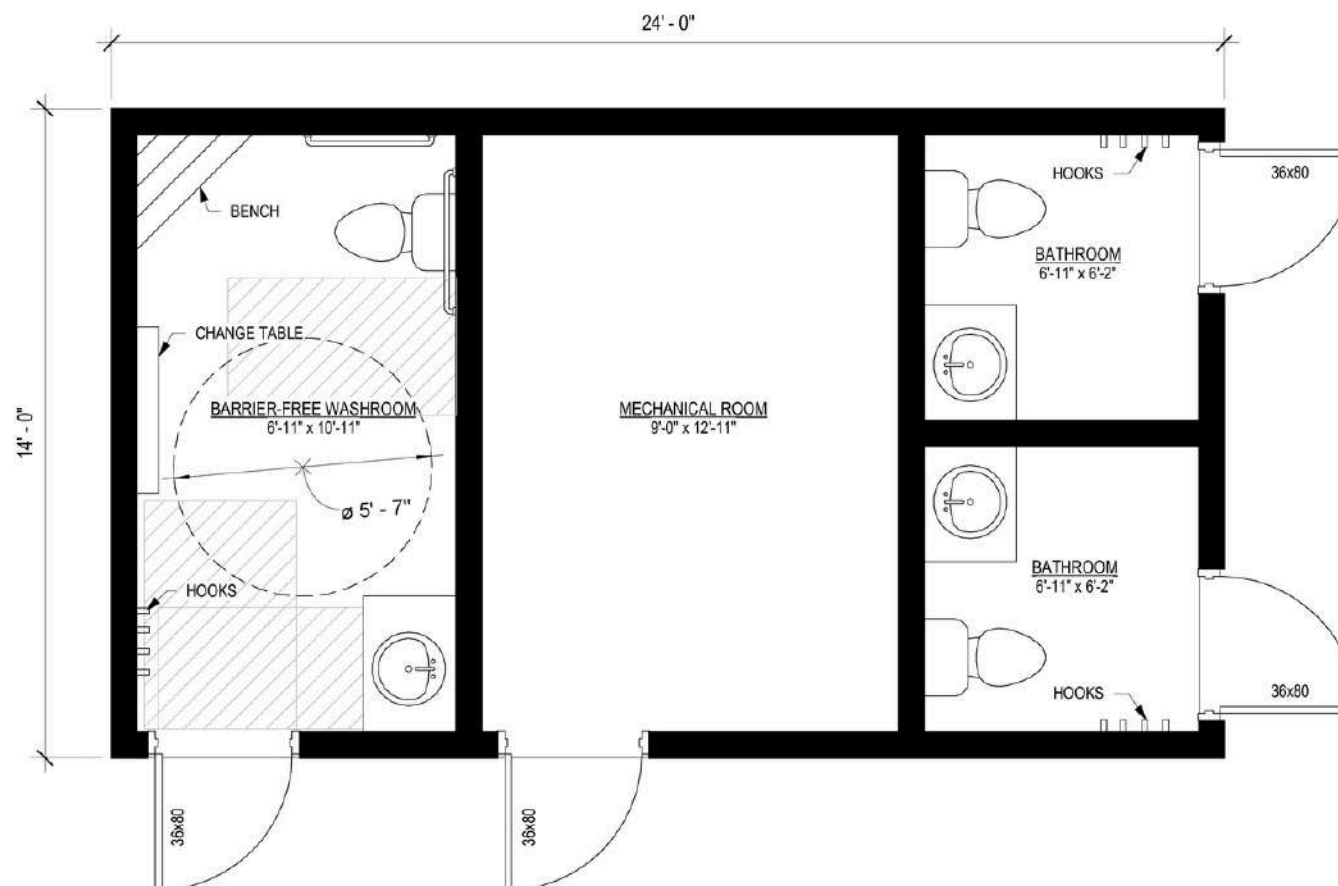
PROJECT NAME  
14x24 WASHROOM UNIT

SHEET NO.

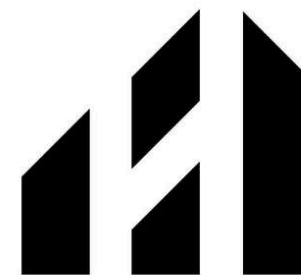
A.1

SCALE  
3/8" = 1'-0"

DATE  
JAN 15TH, 2025



1 MAIN FLOOR PLAN  
3/8" = 1'-0"



# HERAUF MODULAR

261 SHERWOOD RD  
REGINA, SK  
S4P 3A2  
INFO@HERAUFMODULAR.COM

REVISIONS: DATE: APPROVED BY:

## DISCLAIMER:

1.THE DRAFTSPERSON ASSUMES NO RESPONSIBILITY OR LIABILITY FOR ANY ERRORS, EXCLUSIONS, OR INCIDENTAL, INDIRECT, OR IMPACTFUL DAMAGE RESULTING FROM THE USE OF THESE DRAWINGS OR THE INFORMATION GIVEN.

2.DRAWINGS ARE NOT TO BE SCALED

3.THE BUILDER IS TO COMPLY WITH NATIONAL BUILDING CODE OF CANADA PART 9.

4.ALL PLANS ARE DRAWN IN COMPLIANCE WITH THE NATIONAL BUILDING CODE OF CANADA. PLANS MUST BE REVIEWED BY A LOCAL BUILDING OFFICIAL PRIOR TO CONSTRUCTION DUE TO LOCAL BUILDING REQUIREMENTS, ZONING REGULATIONS, AND CLIMATIC FACTORS.

A LICENSED ARCHITECT OR ENGINEER MUST REVIEW AND ENGINEER ALL STRUCTURAL COMPONENTS.

6.HERAUF MODULAR RETAINS OWNERSHIP OF THE COPYRIGHT FOR THESE PLANS. WITHOUT PRIOR PERMISSION IN WRITING FROM HERAUF MODULAR, IT IS ENTIRELY PROHIBITED TO DUPLICATE THESE DRAWINGS, IN WHOLE OR IN PART.

LOCATION  
ALBERTA

BUILDER

HERAUF MODULAR

DESIGNED BY  
HERAUF MODULAR

DRAWN BY  
H. KOPEC

DRAWING TITLE  
MAIN FLOOR PLAN

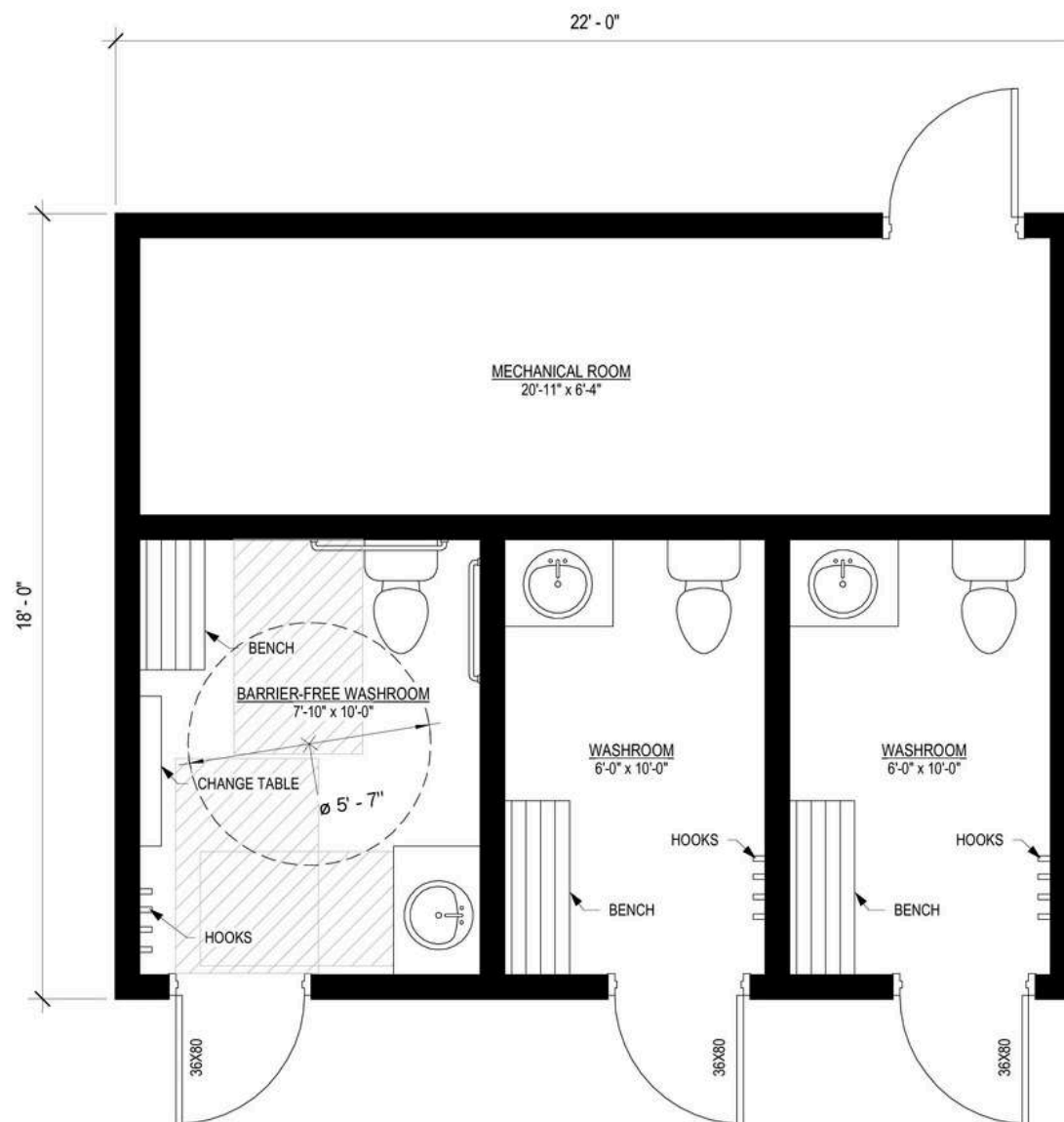
PROJECT NAME  
18x22 WASHROOM UNIT

SHEET NO.

A.1

SCALE  
3/8" = 1'-0"

DATE  
JAN 16TH, 2025



1 MAIN FLOOR PLAN  
3/8" = 1'-0"





# Cost Effective

Quality

Professional

Trustworthy

Reliable

Innovative



# HERAUF MODULAR

261 SHERWOOD RD  
REGINA, SK  
S4P 3A2  
INFO@HERAUFMODULAR.COM

REVISIONS: DATE: APPROVED BY:

DISCLAIMER:  
1.THE DRAFTSPERSON ASSUMES NO RESPONSIBILITY OR LIABILITY FOR ANY ERRORS, EXCLUSIONS, OR INCIDENTAL, INDIRECT, OR IMPACTFUL DAMAGE RESULTING FROM THE USE OF THESE DRAWINGS OR THE INFORMATION GIVEN.

2.DRAWINGS ARE NOT TO BE SCALED 3.THE BUILDER

IS TO COMPLY WITH NATIONAL BUILDING CODE OF CANADA PART 9.  
4.ALL PLANS ARE DRAWN IN COMPLIANCE WITH THE NATIONAL BUILDING CODE OF CANADA. PLANS MUST BE REVIEWED BY A LOCAL BUILDING OFFICIAL PRIOR TO CONSTRUCTION DUE TO LOCAL BUILDING REQUIREMENTS, ZONING REGULATIONS, AND CLIMATIC FACTORS.

A LICENSED ARCHITECT OR ENGINEER MUST REVIEW AND ENGINEER ALL STRUCTURAL COMPONENTS.

6.HERAUF MODULAR RETAINS OWNERSHIP OF THE COPYRIGHT FOR THESE PLANS. WITHOUT PRIOR PERMISSION IN WRITING FROM HERAUF MODULAR, IT IS ENTIRELY PROHIBITED TO DUPLICATE THESE DRAWINGS, IN WHOLE OR IN PART.

LOCATION CANADA

BUILDER

HERAUF MODULAR

DESIGNED BY

HERAUF MODULAR

DRAWN BY

H: KOPEC

DRAWING TITLE

PRESENTATION PLAN

PROJECT NAME

SHEET NO.

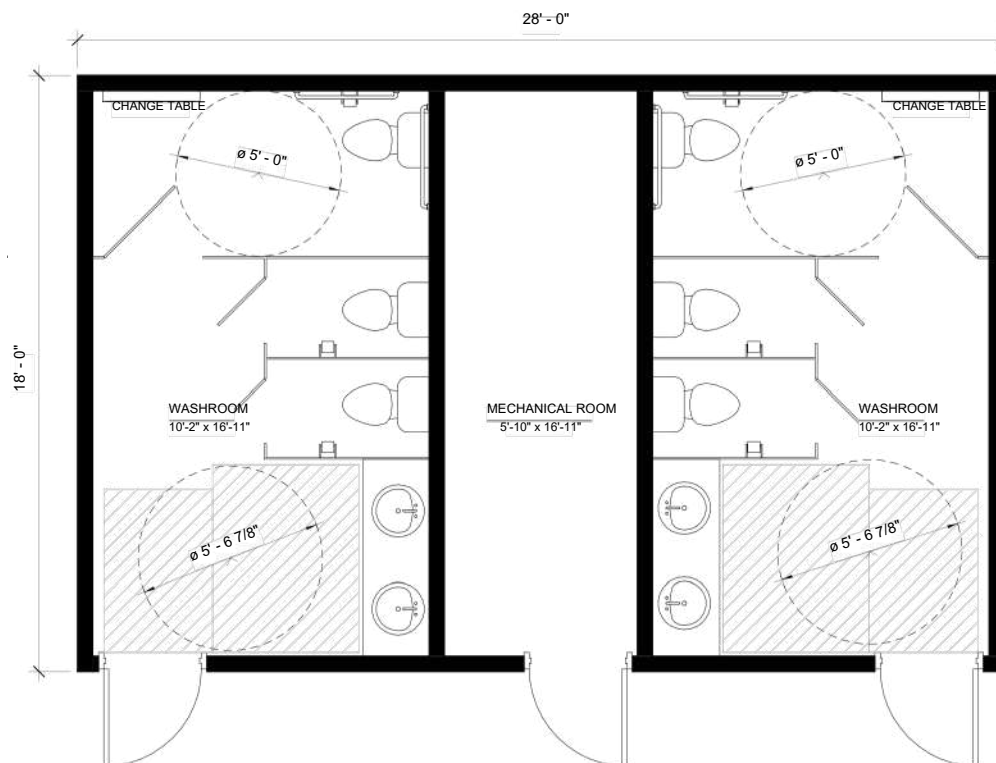
A.1

SCALE

3/8" = 1'-0"

DATE

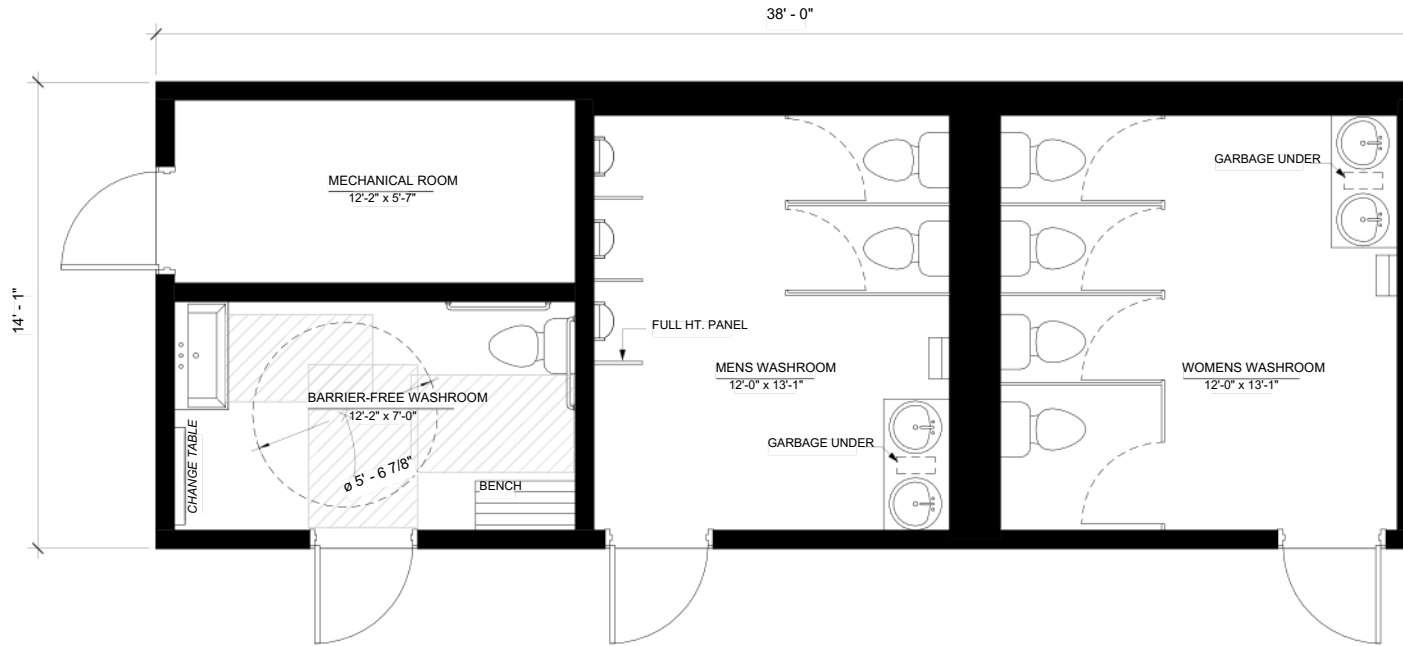
JAN 17, 2025



## MAIN FLOOR PLAN

1

3/8" = 1'-0"



1 MAIN FLOOR PLAN  
3/8" = 1'-0"



## HERAUF MODULAR

261 SHERWOOD RD  
REGINA, SK  
S4P 3A2  
INFO@HERAUFMODULAR.COM

REVISIONS: DATE: APPROVED BY:

DISCLAIMER:  
1.THE DRAFTSPERSON ASSUMES NO RESPONSIBILITY OR LIABILITY FOR ANY ERRORS, EXCLUSIONS, OR INCIDENTAL, INDIRECT, OR IMPACTFUL DAMAGE RESULTING FROM THE USE OF THESE DRAWINGS OR THE INFORMATION GIVEN.

2.DRAWINGS ARE NOT TO BE SCALED 3.THE BUILDER

IS TO COMPLY WITH NATIONAL BUILDING CODE OF CANADA PART 9.

4.ALL PLANS ARE DRAWN IN COMPLIANCE WITH THE NATIONAL BUILDING CODE OF CANADA. PLANS MUST BE REVIEWED BY A LOCAL BUILDING OFFICIAL PRIOR TO CONSTRUCTION DUE TO LOCAL BUILDING REQUIREMENTS, ZONING REGULATIONS, AND CLIMATIC FACTORS.

A LICENSED ARCHITECT OR ENGINEER MUST REVIEW AND ENGINEER ALL STRUCTURAL COMPONENTS.

6.HERAUF MODULAR RETAINS OWNERSHIP OF THE COPYRIGHT FOR THESE PLANS. WITHOUT PRIOR PERMISSION IN WRITING FROM HERAUF MODULAR, IT IS ENTIRELY PROHIBITED TO DUPLICATE THESE DRAWINGS, IN WHOLE OR IN PART.

LOCATION CANADA  
BUILDER

HERAUF MODULAR

DESIGNED BY

HERAUF MODULAR

DRAWN BY

H. KOPEC

DRAWING TITLE

MAIN FLOOR PLAN

PROJECT NAME

SHEET NO.

A.1

SCALE

3/8" = 1'-0"

DATE

JAN 31, 2025

14'x38' WASHROOM UNIT



# Versatile Portable Washrooms

## Industrial

- Industrial Washroom and Shower Units In the fast-paced industrial sector, efficiency and durability are paramount. Our modular washroom and shower units are engineered to withstand the rigorous demands of industrial environments. Equipped with robust materials and easy-to-clean surfaces, they provide a practical and hygienic solution for factories, warehouses, and production facilities. Enhance worker satisfaction and productivity with facilities that can be deployed rapidly and maintained with minimal downtime.

## Parks & Recreation

- Parks & Recreation Washroom and Shower Units Enhance the visitor experience in parks and recreational areas with our modular washroom and shower units. Ideal for locations with high foot traffic or limited infrastructure, these units blend functionality with aesthetics to complement natural surroundings. Quick to install and environmentally friendly, they provide essential amenities for campgrounds, public beaches, and community parks, ensuring accessibility and cleanliness to keep your landscapes pristine and your visitors happy.

## Commercial

- Our modular washroom and shower units bring a blend of style and functionality to commercial spaces such as retail complexes, office buildings, and event venues. With customizable designs to match corporate aesthetics, they offer a cost-effective solution for managing facilities during renovations or peak usage times. Herauf Modular promises a seamless integration and rapid deployment, minimizing disruption to daily operations.

## Agricultural

- Agricultural Washroom and Shower Units Agriculture demands resilience, and our modular washroom and shower units are built to serve. Designed to cater to the unique needs of farms, vineyards, and agricultural facilities, these units offer convenience and comfort in remote or rural settings. Weather-resistant and easily transportable, they can be placed in field locations to support seasonal workers during harvests or daily operations, ensuring compliance with health standards and improving on-site hygiene.



Quality

Professional

Trustworthy

Reliable

Innovative

# HERAUF MODULAR SPECIFICATIONS

## Superior Construction

- 1/2" plywood - under floor structure
- Under floor structure metal cap
- Engineered 2 x 4 roof trusses @ 24" OC
- 2"x 4" Interior walls @ 24" OC
- 2"x 6" exterior walls @ 16" OC
- 2" x 10" floor Joists @16" OC
- 3/4" tongue & groove subfloor
- 7/16" wall & roof sheathing
- Rafter hurricane ties
- Insulation R - Value Floor R-32
- Insulation R - Value Walls R-24
- Insulation R - Value Roof R-60
- 6ml vapour barrier (CCSB)

## Mechanical & Plumbing

- 30, 40 or 60 imperial gal water heater (pending use requirements)
- Natural gas on demand water heater (optional)
- Motion sensor / light controlled exhaust fans
- HRV (Heat Recovery Ventilator) supply & exhaust system (optional)
- 1 piece 4' shower c/w glass sliding doors (shower units only)
- 4" or 8" center set vanity sink
- ADA compliant vanity faucets
- Low Flow Rear ejection toilet
- Shut off valves at all plumbing fixtures
- Washroom Accessible grab bars (optional)
- 5lb ABC fire extinguisher
- Self containment System 400, 600 , 800 Gallon (optional)

## Electrical

- 100 Amp Electrical Panel (Standard)
- Electric forced fan wall heaters, baseboard heaters & thermostats
- 2 Exterior GFI receptacles
- 1.5" Conduit Raceway to electrical panel for future electrical service
- GFI protected receptacles in washroom
- AFCI circuit breakers
- 1 heat trace receptacle
- Smoke/Carbon Monoxide alarms
- Interior LED pot lights
- Exterior LED lights
- Solar Rough-in (optional)
- Exit door and battery back up exit lights

## Maintenance Free Exteriors

- Vinyl Siding (Metal siding optional)
- Tyvek House wrap
- Pre-finished 12" soffit
- Pre-finished 6" fascia
- 36"-18 gauge primed steel insulated ext. door, expandable jamb, aluminium sill & commercial grade weatherstripping.
- 5" Eavestrough & downspouts
- Architectural Asphalt Shingles (Metal standing seam roof optional)

## Interior Decor

- Custom floating vanity cabinets, laminate countertop and Hardware
- Commercial Lino Flooring
- Accessible compliant vanity, mirror, towel bars & toilet paper holders
- 4" rubber base
- PVC wall & ceiling panels and trims
- Commercial grade door hardware, locks & passage

## Warranty & Certifications

- 1 Year comprehensive
- 2 Year Mechanical
- 5 Year Envelope Seal





# Foundations

When building a prefab modular home in Canada, the foundation is critical to the stability and longevity of the structure. The right foundation depends on site-specific factors like soil type, climate, function, and budget. Built Prefab modular homes are designed to be placed on a variety of foundation types, ensuring flexibility and durability to meet your needs. At Herauf Modular we offer engineered steel skids, adjustable jack stands, crawl space/basement and Piles.

## **Herauf Engineered Steel Skid**

Choosing the engineered steel skid foundation with your HERAUF unit is truly the 'all in one' option, allowing for minimal site prep, ideal for easy to relocation and no anchoring is required. Your Herauf unit can be placed on any level surface. and can be relocated on any surface.

## **Adjustable Jack Stands - Wood Cribbing**

Engineered free standing jack stands, fast install and easy adjustments, anchoring may apply. Adjustable Jack Stands adapt easily to local site conditions, Jack Stands are designed by our engineers to be installed under the main beams of the home sections. Jack Stands are set on square footers or pads on the ground spread the load from a pier over a larger area, making a more stable base. The square pad footers may be concrete, either poured in place or precast, and preservative-treated wood. The spacing of the piers and the allowable bearing capacity of the soil determine the size of the footer or pad. The piers typically vary depending on home design, local soil characteristics, and roof snow load.

## **Slab On Grade - Crawl Space - Basement - Grade Beam**

This option serves great utility providing you access to the underside of your home and offering insulation and protection from the elements. Much like a basement, a crawl space is created by excavating the appropriate area, pouring concrete footings and then pouring the foundation walls and floor. Once completed the home is craned onto the crawlspace and finished accordingly. Once completed all mechanical and electrical tie ins are easily accessible under the building. A crawl space can be an economical solution to a basement and can even offer storage.

## **Helical Steel Piles - Concrete Piles**

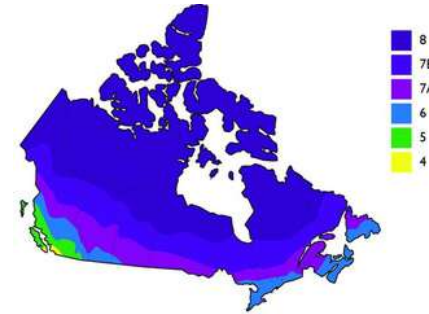
Piles are installed using a skid steer or similar machinery that simply turns the auger type pile into the ground until it reaches a tension specified by the engineer. Once all of the piles have been screwed in per plan, they are levelled off to laser precision. The screw pile method can be economical.



Our HERAUF product goes through Energy Efficiency modelling process focusing on our client's geographical region to best provide the highest level of energy efficiency, while creating comfortable living standards all year long. HERAUF products are designed and constructed to the highest level of "National Building Code", Sec on 9.36 (NBC) standard practice and delivered to meet up to Climate Zone 8. Fulfilling every region across Canada from Nova Scotia, Vancouver Island, Northwest Territories and Southern Prairies.



Phone: (306) 352-6617  
Toll Free: 1-877-352-6617



2232 2nd Avenue  
Regina, SK S4R 1K3  
[www.robinsonplans.com](http://www.robinsonplans.com)

Herauf Modular employed Robinson Residential Design Inc. to run test models for residential building prototypes and confirm with certainty their energy compliance. Multiple rounds of testing were completed using ANSI/ASHRAE compliant software, Hot2000.

Robinson Residential Design, hereby confirms the current specifications Herauf Modular provided for building envelope, mechanical equipment, window & doors – for each offered residential type building, meet the requirements of the 2015 National Building Code of Canada, Division B, Sec on 9.36 energy modeling requirements of Zones 6, 7A, 7B & 8.

If you have further questions pertaining to the information supplied, or if you need further verification of this letter, please contact Robinson Residential Design using the contact information listed.

Sincerely, Faith Zwozdesky  
Senior Architectural Technologist/ Energy Consultant  
Robinson Residential Design Inc.

A handwritten signature in black ink, reading "Faith Zwozdesky". The signature is written in a cursive, flowing style.





# Sustainable Energy Solutions Solar Power

Quality

Professional

Trustworthy

Reliable

Innovative





# A Sustainable Solution for Today and Tomorrow

## **Reliable Renewable Energy**

Harness solar power for consistent, low-cost energy. Smart technology manages your energy supply, ensuring reliability in all conditions.

## **Economic & Environmental Gains**

Reduce operational costs with significant tax incentives and lower energy bills. Reinvest savings in your community and sustainability projects.

## **Resilient Operations**

Our advanced solar solutions guarantee uninterrupted power, supporting critical systems even during outages. Maintain safety and productivity with ease.

## **Invest in Sustainability**

Choose Herauf Modular's innovative solar solutions. Meet rigorous standards while securing energy independence and reducing environmental impact.

## **Tax Incentives**

Businesses and residents investing in solar, battery energy storage, geothermal, and micro-grid technologies can benefit from the various tax incentive programs in Canada.



Ask us about our solar options for long-lasting community development. Together, we can build a greener tomorrow.





Thank you for Considering Herauf Modular

Quality

Professional

Trustworthy

Reliable

Innovative



Connect with us for more info :



[info@Heraufmodular.com](mailto:info@Heraufmodular.com)



[Heraufmodular.com](http://Heraufmodular.com)



[Heraufenterprises.com](http://Heraufenterprises.com)

