



Herauf Modular Daycare



Quality

Reliable

Trustworthy

Professional

Innovative



Thank you for your interest in HERAUF MODULAR. , This package highlights our modular daycare solutions and showcases sample layouts, features, and design options.

Our daycare units are thoughtfully crafted to support safe, inclusive, and engaging environments for children. With features like non-slip flooring, rounded finishes, barrier-free access, and secure entry points, each design prioritizes child safety, accessibility, and long-term durability

Whether you're planning a new build or expanding an existing program, our modular units can be tailored to meet licensing standards and the unique needs of your community. Built with quality materials and efficient construction methods, Herauf Modular delivers flexible spaces that grow with you.

We invite you to explore the brochure and imagine the possibilities. If you have any questions or would like to discuss your project further, our team is here to help.

From design to delivery, we are committed to providing exceptional service every step of the way. After finalizing the customizations, we will provide a detailed quote, contract, and timeline, along with all necessary information on delivery, installation, and post-delivery support.

Thank you again for considering HERAUF MODULAR for your project.
We look forward to building brighter futures together.

Sincerely,

The Herauf Modular Team



Daycare Designs

Overview

Our modular daycares are designed with a profound commitment to sustainability, safety, and fostering optimal child development. These scalable solutions cater to different sizes of child populations—30, 60, and 90 children—ensuring that each facility perfectly matches the needs of its community while adhering to the highest standards of eco-friendliness and security.

Features

1. Sustainability

- **Energy Efficiency:** Solar options, energy-efficient lighting, and climate control systems reduce the carbon footprint while maintaining a comfortable environment.
- **Green Play Areas:** Outdoor play spaces are integrated with natural elements, promoting biodiversity and an appreciation for nature among children.

2. Safety

- **Secure Construction:** Built to exceed safety codes, our modules can withstand severe weather and are equipped with fire-resistant materials.
- **Health-Focused Design:** Ventilation systems ensure clean air, while non-toxic, easy-to-clean surfaces maintain a hygienic environment.

Capacity Configurations

30-47 Child Facility

- **Compact and Intimate:** Ideal for smaller communities or as an extension to existing educational institutions, offering a close-knit, familial atmosphere.

65-82 Child Facility

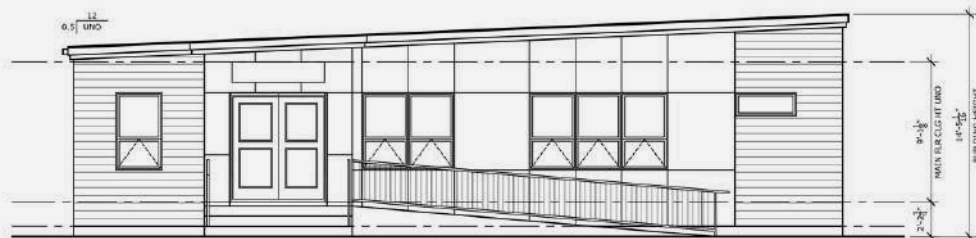
- **Community Centered:** Doubles the capacity while maintaining the charm and safety of a controlled, nurturing environment.

90 Child Facility

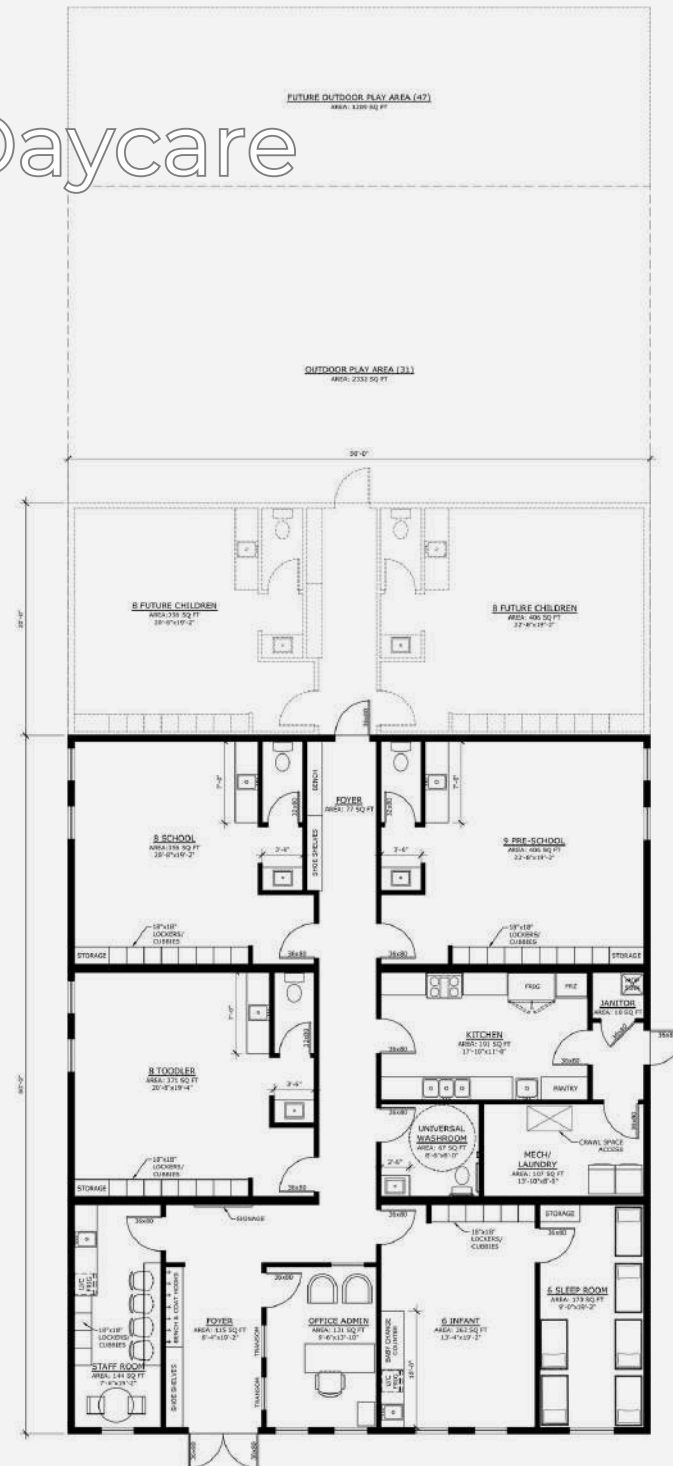
- **Large Scale Development:** Supports larger communities without compromising on individual attention and care.



Daycare



FRONT ELEVATION - 30-47 CHILDREN

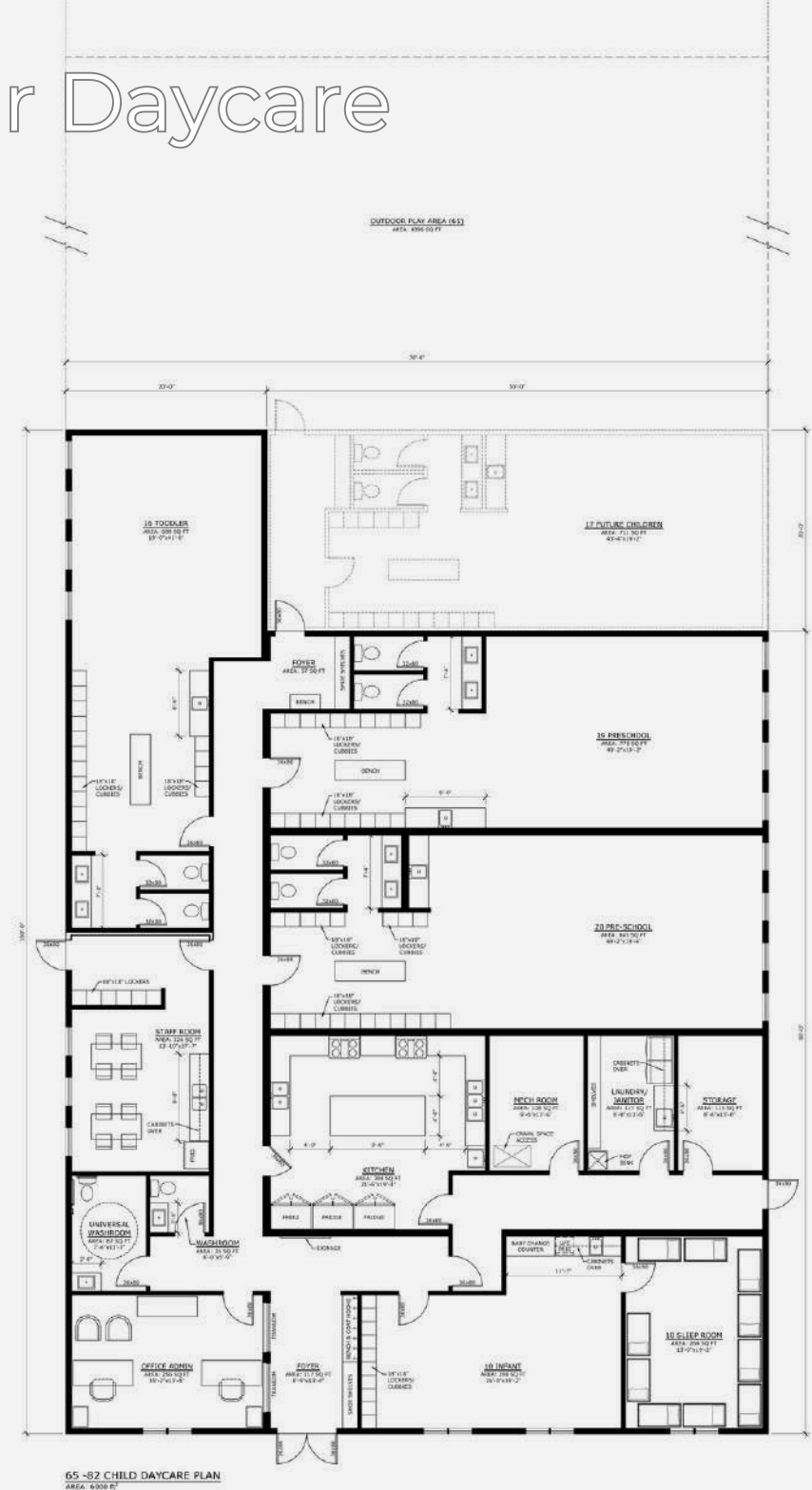


30 -47 CHILD DAYCARE PLAN
AREA: 3000 ft²

65-82 Child Modular Daycare



FRONT ELEVATION - 65-82 CHILDREN

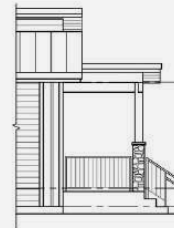




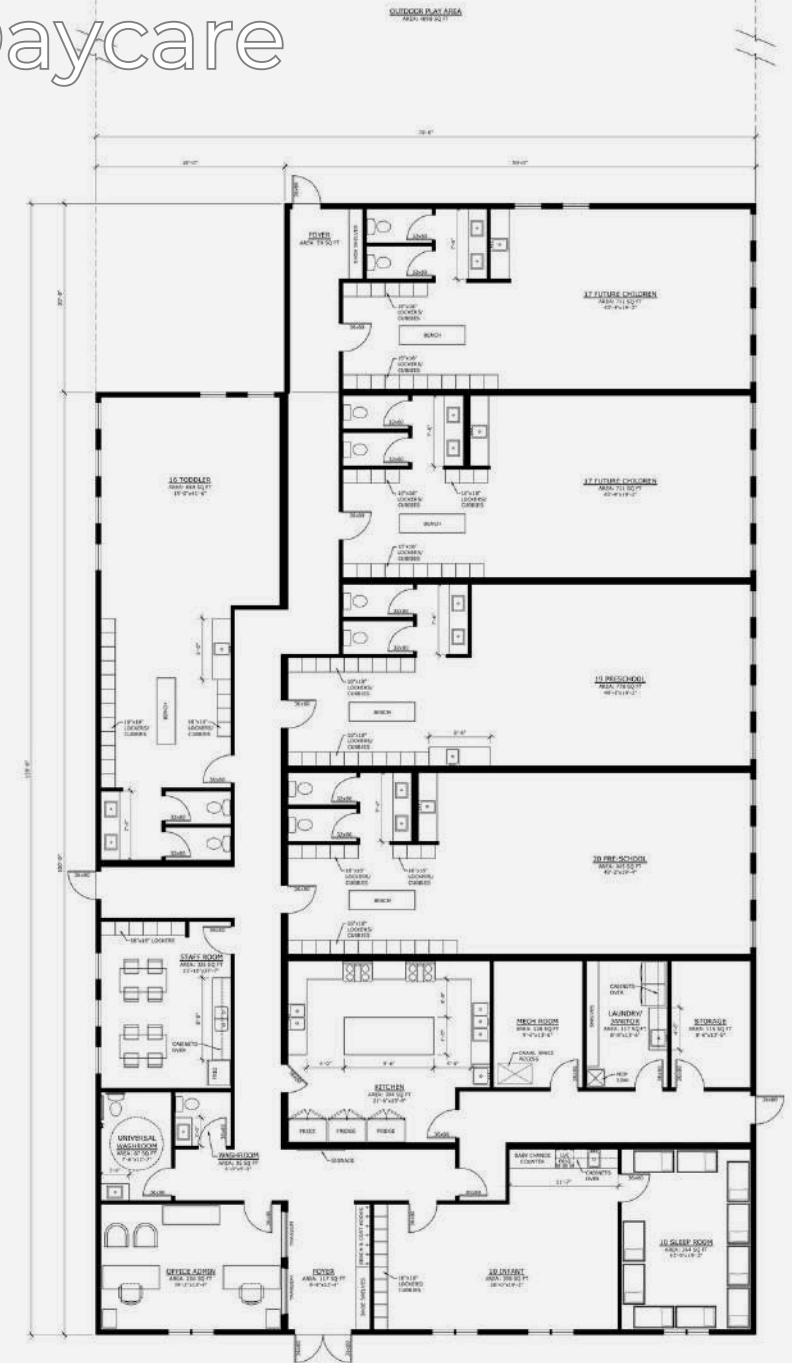
90 Child Modular Daycare



FRONT ELEVATION - 65-82 CHILDREN



SIDE ELEVATION

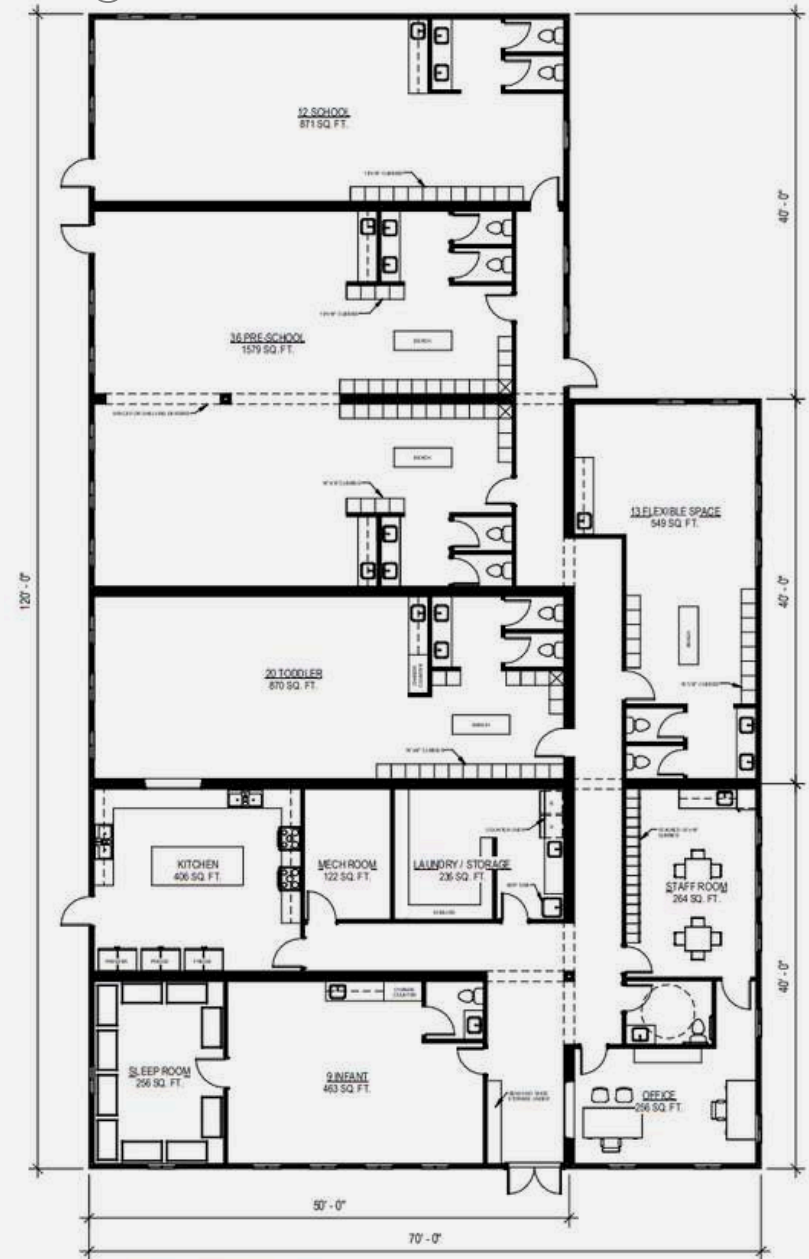




90 Child Modular Daycare



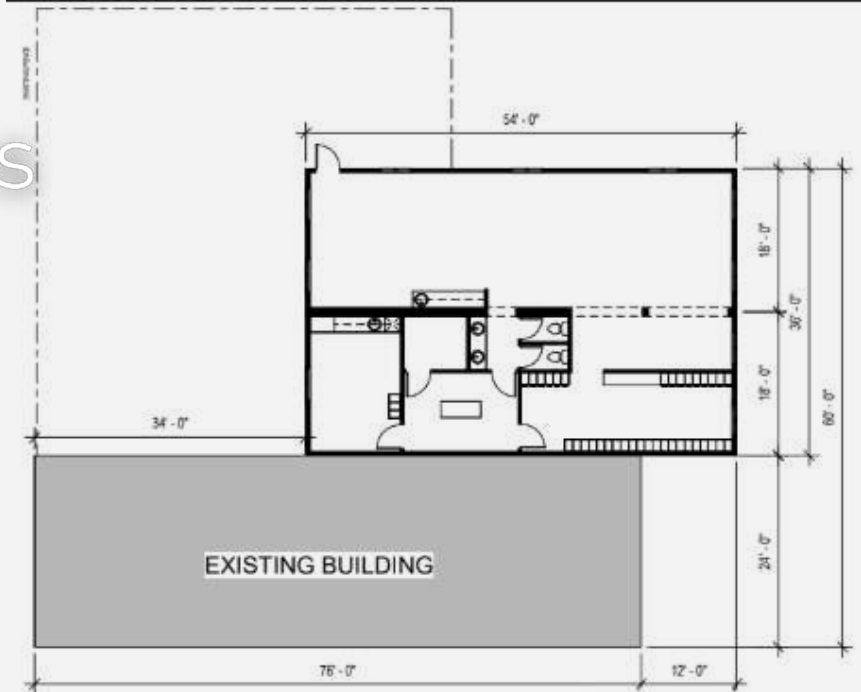
FRONT ELEVATION - 62-85 CHILDREN



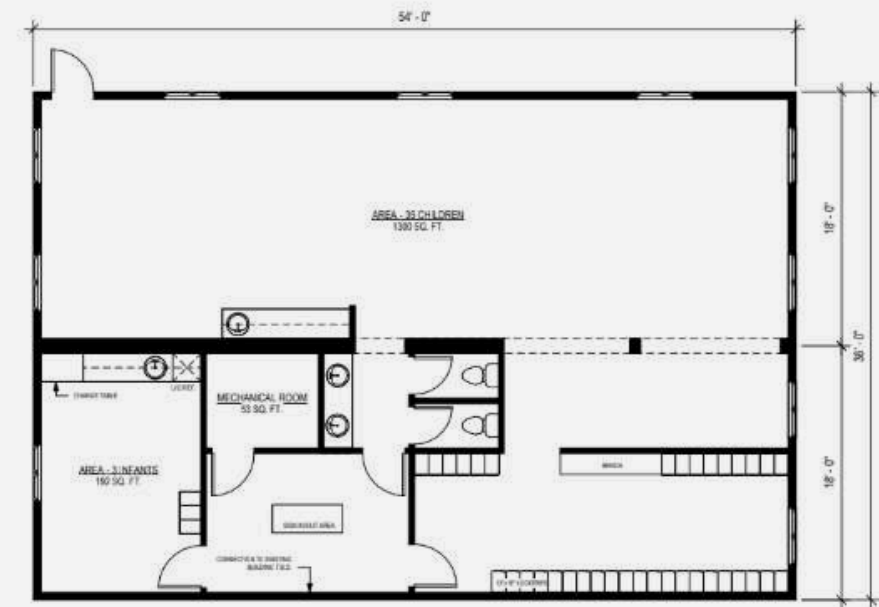
① MAIN FLOOR PLAN
1/8" = 1'-0"



Day Care Additions



① SITE PLAN
3/32" = 1'-0"



② MAIN FLOOR PLAN
3/16" = 1'-0"



Foundations

When building a prefab modular home in Canada, the foundation is critical to the stability and longevity of the structure. The right foundation depends on site-specific factors like soil type, climate, function, and budget. Built Prefab modular homes are designed to be placed on a variety of foundation types, ensuring flexibility and durability to meet your needs.

At Herauf Modular we offer engineered steel skids, adjustable jack stands, grade beams and Piles.

Herauf Engineered Steel Skid

Choosing the engineered steel skid foundation with your HERAUF unit is truly the 'all in one' option, allowing for minimal site prep, ideal for easy relocation and no anchoring is required. Your Herauf unit can be placed on any level surface. and can be relocated on any surface.

Adjustable Jack Stands - Wood Cribbing

Engineered free standing jack stands, fast install and easy adjustments, anchoring may apply. Adjustable Jack Stands adapt easily to local site conditions, Jack Stands are designed by our engineers to be installed under the main beams of the home sections. Jack Stands are set on square footers or pads on the ground to spread the load from a pier over a larger area, making a more stable base. The square pad footers may be concrete, either poured in place or precast, and preservative-treated wood. The spacing of the piers and the allowable bearing capacity of the soil determine the size of the footer or pad. The piers typically vary depending on home design, local soil characteristics, and roof snow load.

Grade Beam - Crawl Space - Foundation - Slab on Grade - Full Basement

This option serves great utility providing you access to the underside of your home and offering insulation and protection from the elements. Much like a basement, a crawl space is created by excavating the appropriate area, pouring concrete piles or footings and then placing the grade beam foundation and floor. Once completed the home is craned onto the crawlspace and finished accordingly. Once completed all mechanical and electrical tie-ins are easily accessible under the building. A crawl space can be an economical solution to a basement and can even offer storage.

Helical Steel Piles - Concrete Piles

Piles are installed using a skid steer or similar machinery that simply turns the auger type pile into the ground until it reaches a tension specified by the engineer. Once all of the piles have been screwed in per plan, they are levelled off to laser precision. The screw pile method can be economical.



Building Brighter Futures



Quality

Reliable

Trustworthy

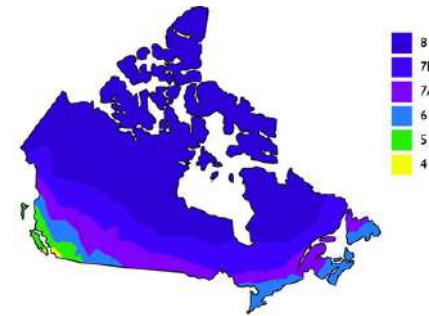
Professional

Innovative

Our HERAUF product goes through Energy Efficiency modelling process focusing on our client's geographical region to best provide the highest level of energy efficiency, while creating comfortable living standards all year long. HERAUF products are designed and constructed to the highest level of "National Building Code", Sec on 9.36 (NBC) standard practice and delivered to meet up to Climate Zone 8. Fulfilling every region across Canada from Nova Scotia, Vancouver Island, Northwest Territories and Southern Prairies.



Phone: (306) 352-6617
Toll Free: 1-877-352-6617



2232 2nd Avenue
Regina, SK S4R 1K3
www.robinsonplans.com

Herauf Modular employed Robinson Residential Design Inc. to run test models for residential building prototypes and confirm with certainty their energy compliance. Multiple rounds of testing were completed using ANSI/ASHRAE compliant software, Hot2000.

Robinson Residential Design, hereby confirms the current specifications Herauf Modular provided for building envelope, mechanical equipment, window & doors – for each offered residential type building, meet the requirements of the 2015 National Building Code of Canada, Division B, Sec on 9.36 energy modeling requirements of Zones 6, 7A, 7B & 8.

If you have further questions pertaining to the information supplied, or if you need further verification of this letter, please contact Robinson Residential Design using the contact information listed.

Sincerely, Faith Zwozdesky
Senior Architectural Technologist/ Energy Consultant
Robinson Residential Design Inc.

A handwritten signature in black ink, reading "Faith Zwozdesky".



Sustainable Energy Solutions Solar Power



Quality

Professional

Trustworthy

Reliable

Innovative



A Sustainable Solution for Today and Tomorrow

Reliable Renewable Energy

Harness solar power for consistent, low-cost energy. Smart technology manages your energy supply, ensuring reliability in all conditions.

Economic & Environmental Gains

Reduce operational costs with significant tax incentives and lower energy bills. Reinvest savings in your community and sustainability projects.

Resilient Operations

Our advanced solar solutions guarantee uninterrupted power, supporting critical systems even during outages. Maintain safety and productivity with ease.

Invest in Sustainability

Choose Herauf Modular's innovative solar solutions. Meet rigorous standards while securing energy independence and reducing environmental impact.

Tax Incentives

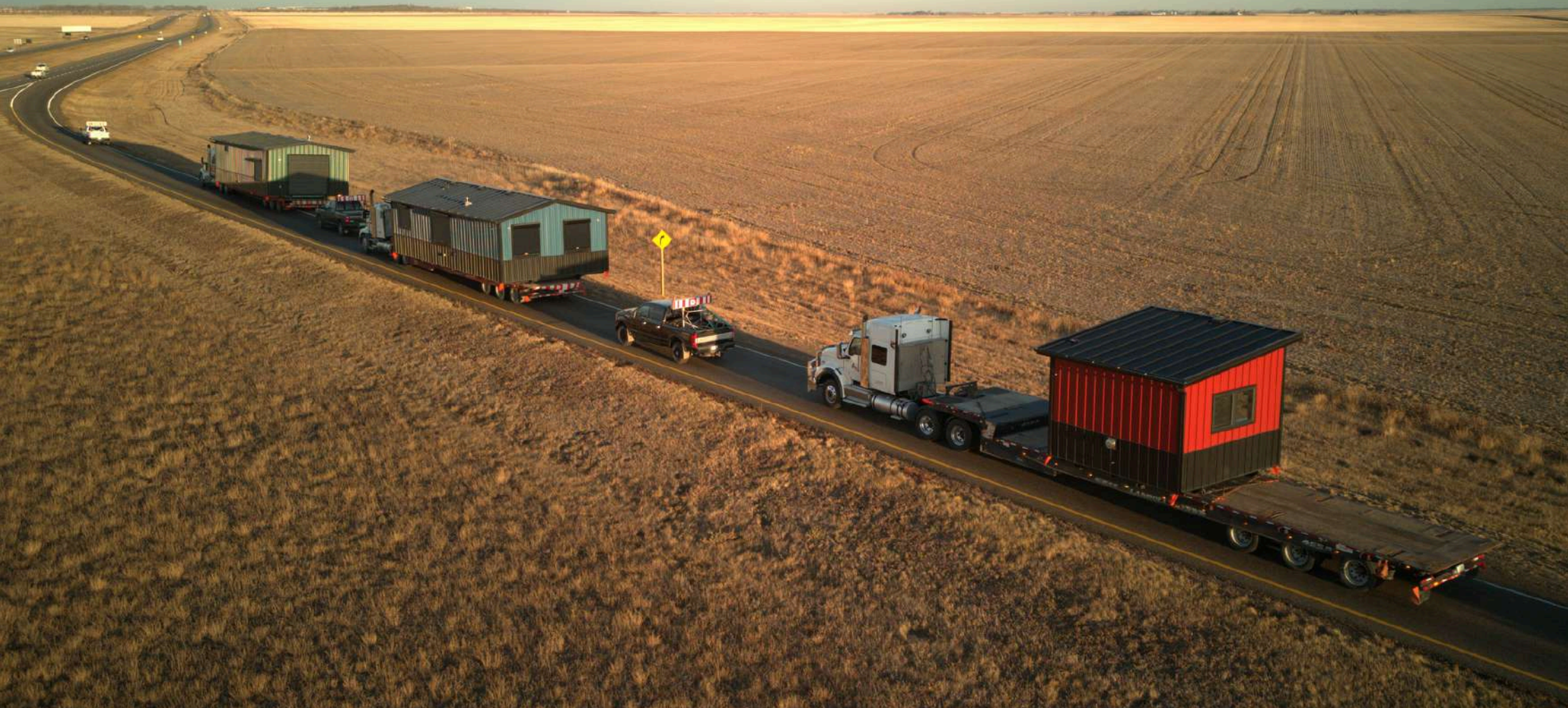
Businesses and residents investing in solar, battery energy storage, geothermal, and micro-grid technologies can benefit from the various tax incentive programs in Canada.



Ask us about our solar options for long-lasting community development. Together, we can build a greener tomorrow.



Thank you for considering Herauf Modular



Quality

Reliable

Trustworthy

Professional

Innovative



Connect with us for more info :



info@Heraufmodular.com



Heraufmodular.com



Heraufenterprises.com

