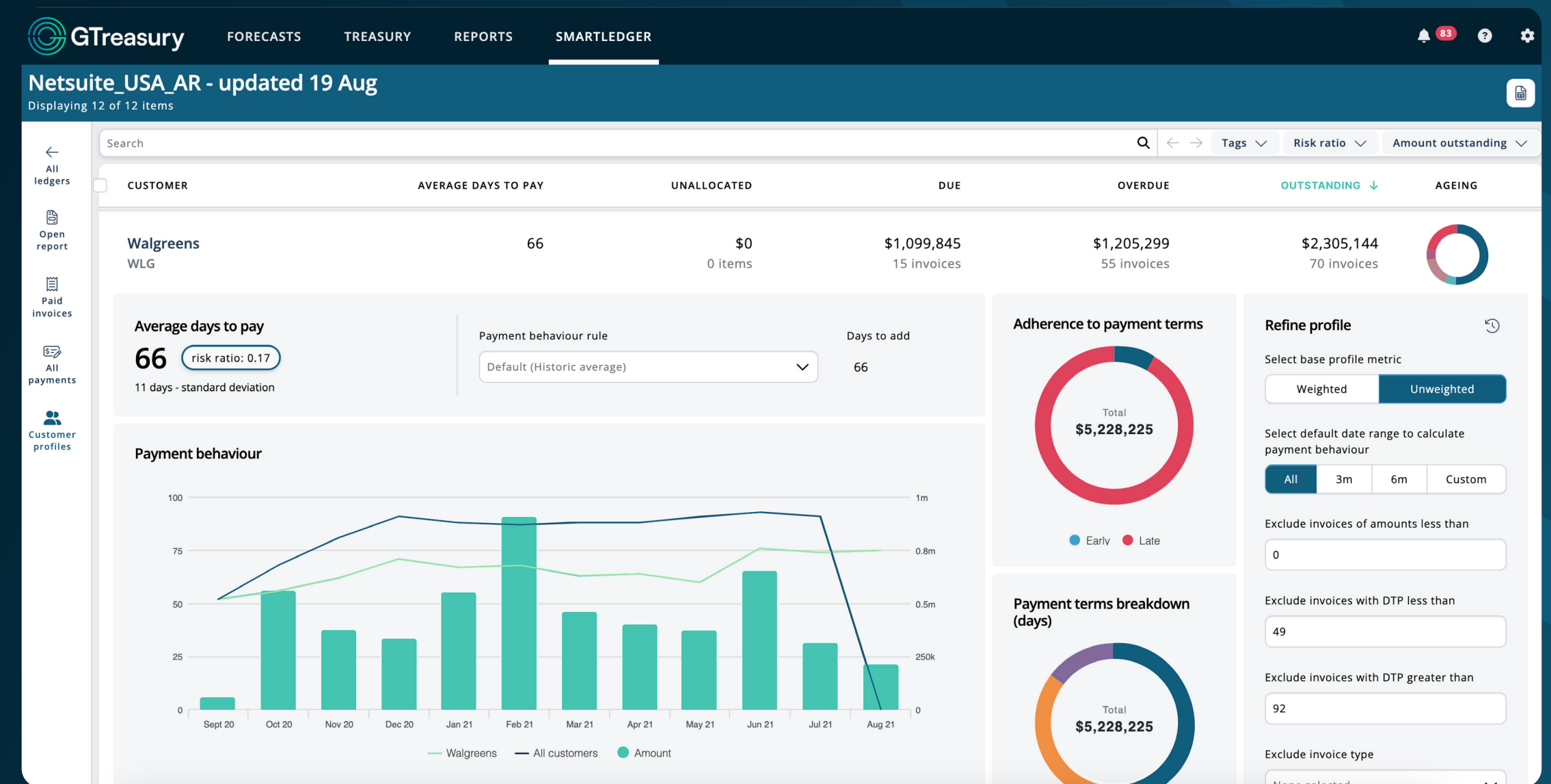




# Gain Confidence in Cash Flow Planning with Deep AP & AR Insights from **GSmart** Ledger

Managing Accounts Payable (AP) and Accounts Receivable (AR) is vital to effective cash flow management but often faces challenges like data inaccuracy, limited visibility, and inefficiencies due to manual processes.

These challenges hinder accurate cash flow forecasting, manage late payments, and ensure timely payments to suppliers. Additionally, a lack of automation and integration across financial systems further complicates reporting, compliance, and overall financial decision-making, driving up operational costs.



**GSmart Ledger** is an intelligent software solution that helps CFOs and treasury teams overcome common challenges in AR and AP analytics by:

- Providing fast and highly accurate short-term cash flow forecasting by integrating historical data with current ledger and bank information
- Offers real-time visibility insights, enhanced accuracy, and automated process for seamless cash flow management
- Automatically generates intelligent cash flow forecasts, enabling seamless management of financial operations for more efficient decision making

# Why Leading Companies are Using **GSmart** Ledger

On average, our clients  
have achieved over  
**30% increase**  
in forecast accuracy



## Improve Free Cashflow

Optimize Days Sales Outstanding (DSO) and Days Payable Outstanding (DPO) with GSmart Ledger to improve free cash flow through enhanced accuracy, real-time visibility into payments and cash positions, and automated processes that reduce overdue payments and boost financial efficiency.



## Rapid Forecast Creation

Rapidly create data-driven cash flow forecasts with no manual input using a combination of ERP data, bank information and AI-powered customer payment behaviour analysis.



## Always Live

Keep your cash forecast live and up to date with GSmart Ledger's continuous updates from the latest invoice cash flow data available in your ERP.



## Intelligent AR Predictions

Leverage the AI-powered forecasting algorithm to significantly improve accounts receivable forecast accuracy by analyzing customer payment history and using this intelligence to generate precise forecasts.



## Plan with Confidence

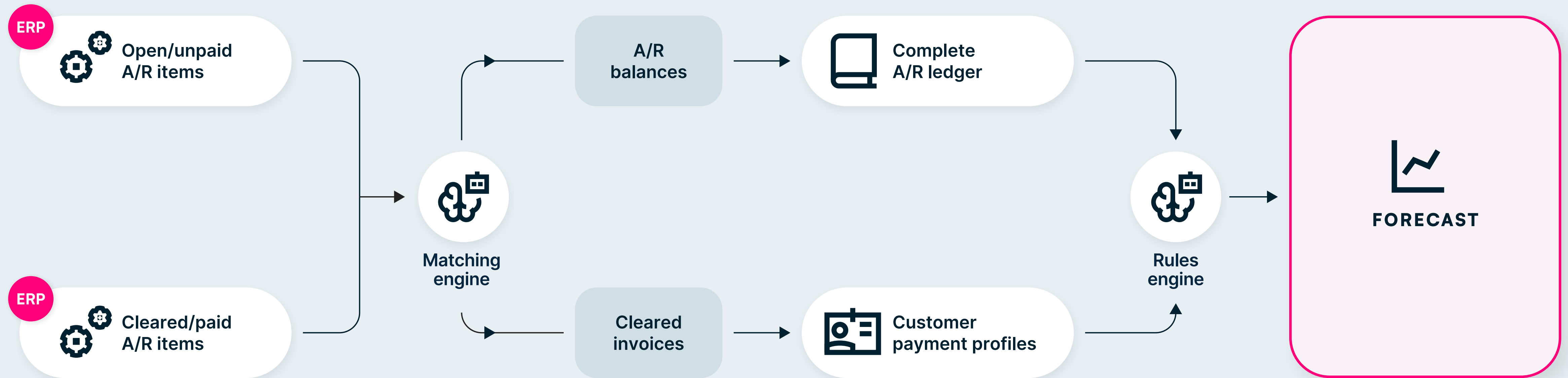
Confidently plan future cash needs by gaining a thorough understanding of upcoming cash flow behaviour using various analysis and visualization too.



## Rapid Time to Value

Get up and running in as little as 90 days, with a fast deployment that accelerates results. Streamline your processes and begin realizing the full value of your investment almost immediately.

# How GSmart Ledger works



1. Integrate AP & AR ledgers to analyse payment behaviour and automate forecast creation at local level

2. All teams get a detailed breakdown of customer and vendor payment history

3. Cash forecasts are auto-adjusted with learned behaviour for better accuracy

4. Performance dashboards available to all stakeholders to drive collective improvements in cash flow



# Key Features



## ERP connectivity

Automate the retrieval of data needed from AP & AR ledgers to create highly accurate short terms forecasts.



## Days to Pay Insights

Analyse any customer or vendor by amount due or overdue, or their average days to pay.



## Collections / Payables Analysis

Targeted insights into where cash flow & income is being lost across AR & AP.



## AR & Overdue Analysis

Quickly analyse the current health of cash collections at both a consolidated & transactional level of detail.



## Intelligent Forecasting

Forecasts are auto-adjusted for historic payment behaviour of customers & vendors.



## Customer & Vendor Profiling

Detailed payment history profiling to understand trends and payment patterns.



## Customer Analysis

Analyse a league table of most impactful customers with drill down to invoice level detail.



## Ageing Analysis

Insights into AR/AP ageing with a profile of current health as well as historical trends.



## Transaction Drill Down

Working capital insights are directly linked to forecasts with drilldown to invoice level data.



## Payment Versus Terms

Review customer payment performance versus terms to see percentage paid late/early.



## Payment Behaviour

Review consolidated payment behaviour of customers and adherence to payment terms to measure the financial impact.



## Company-Wide Insights

Slice and dice this data several different ways using filter options such as business unit, customers, ledgers & country.

# Key Benefits

## ERP Connectivity

Short term AP and AR forecast automation for local controllers

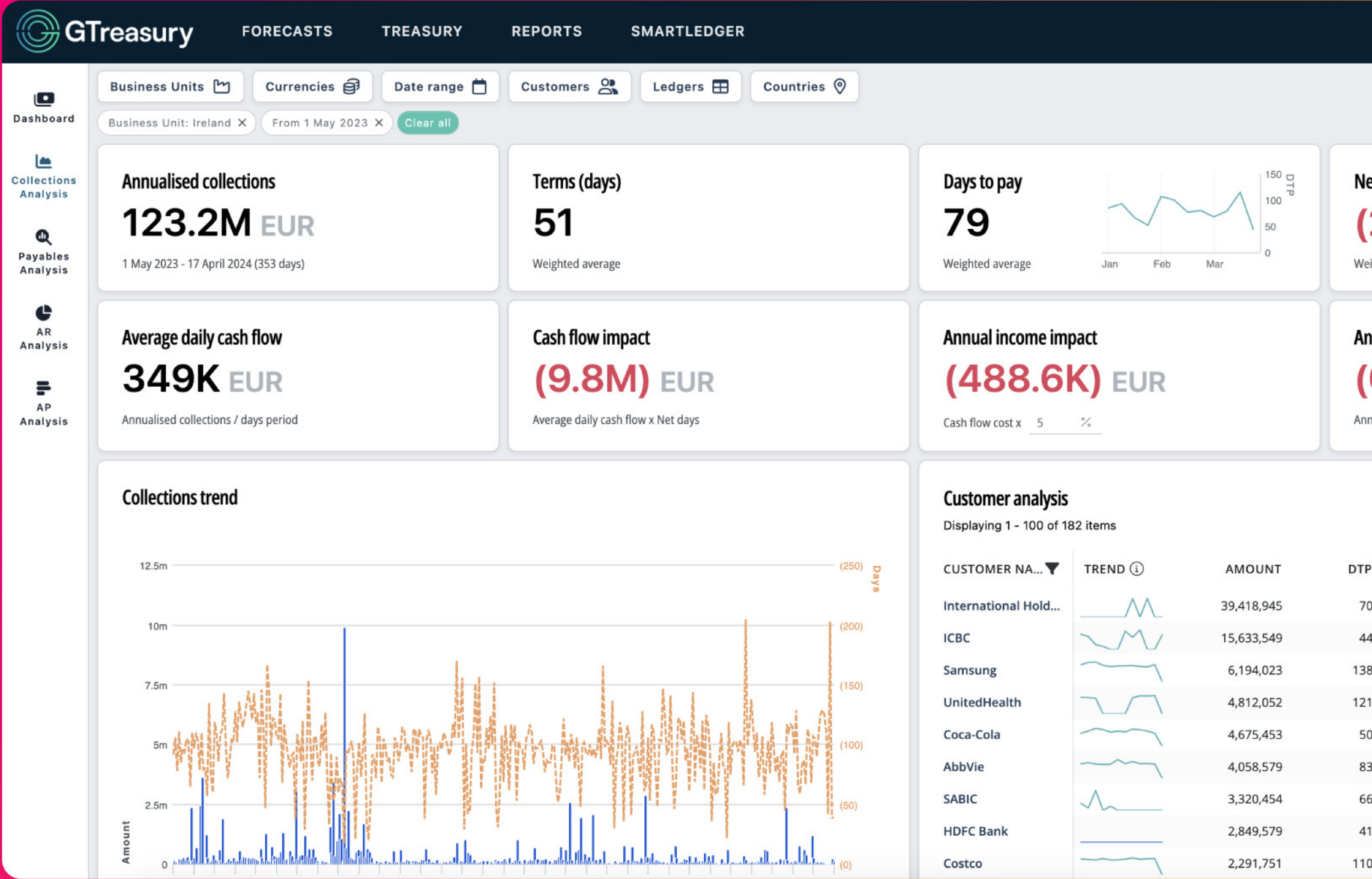
Medium trend term forecasting using historical data

Customer payment profiling with calculated days to pay and payment trends

Internal/supplier payment behaviour profiling

Create forecast rules per customer and supplier

Detailed ageing and overdue analysis





# AI Security and Compliance Information

AI is a powerful amplifier of value for CFOs and Treasury teams. This power comes with great responsibility. So, trust in AI used must be earned. At GTreasury, we believe transparency is the best first step to take in earning that trust.

## How GSmart Protects Your Data

### Auditability and Observability

Full auditability, every AI interaction is logged with a unique **trace\_id**. To provide this transparency, AI Interaction traces are captured by our central observability platform (**Langfuse**), hosted securely in the US.

### Explainability

**No Black Box AI.** All AI outputs are fully traceable to their originating data, with transparent reasoning steps and justifications included for every insight generated. Each customer's data and context are processed in isolation, ensuring insights are explainable and auditable—never mixed across clients. Detailed observability is maintained for every AI interaction, so you always know how and why each decision is made.

### Compliance Framework

**Aligned with ISO/IEC 42001** (AI Governance) and **ISO/IEC 27001** (Information Security). Prepared for the upcoming **EU AI Act**, helping ensure our solutions remain low-risk for financial services.

### Zero Trust Security

GSmart employs a comprehensive **Zero Trust Security Architecture**, anchored by Azure Managed Identity. This approach eliminates risks from hardcoded credentials and enforces strict role-based access controls (RBAC). All resources and interactions are continuously authenticated and validated. This principle of least privilege ensures is used to cause systems to have only the minimum access necessary, significantly reducing the attack surface and enhancing security resilience. All interactions are meticulously logged and monitored, enabling swift detection and response to any anomalies or unauthorized access attempts.

### Agentic AI

Agentic capabilities in GSmart are securely constrained within customer-defined boundaries. Agents interact solely with customer-specific, isolated datasets and do not utilize or train on information from other clients. Each agent operates under stringent permission sets, with comprehensive auditability, and system-defined security guardrails, empowering users to innovate safely and confidently without sacrificing data privacy or control.

### Security Testing

GSmart employs rigorous, multi-layered security testing integrated into GTreasury's CI/CD pipelines. This includes proactive "red team" testing against carefully curated golden datasets—validating inputs and outputs of prompts, comprehensive static and dynamic security scans on all code, and systematic benchmarking of AI models for vulnerabilities, compliance, and performance.

### Encryption

All data is encrypted using advanced cryptographic standards. Data in transit is secured via TLS 1.2+ protocols, employing modern cipher suites such as AES-GCM, ECDHE, and SHA-384 hashing algorithms. Data at rest utilizes AES-256 encryption, with key management rigorously controlled and regularly rotated per Azure's enterprise-grade standards. Our encryption practices fully align with SWIFT Customer Security Controls Framework (CSCF).

### Risk Classification

Active evaluation of AI use cases against the **EU AI Act** framework to ensure compliance and maintain low-risk classification.

### Data Usage for AI

Same idea, but enforced with Inference-Only AI policies, supported by audit logs and verification mechanisms.

### Client Control Over AI

Clients have full control over AI capabilities through feature flags and can restrict which datasets are accessible for AI processing.

### Data Privacy & Residency

Our platform uses a hybrid data model. Permanent client data at rest is stored exclusively within the client's selected region (e.g., US, EU, APAC). For AI processing, data is securely and transiently handled by our central AI middleware in the US, held in memory with a 30-minute TTL, and is purged immediately after processing. This ensures no permanent cross-region data storage occurs.

# About GTreasury

GTreasury provides CFOs and Treasurers with **The Clarity to Act** on strategic financial decisions with the world’s most adaptable treasury platform, empowering them to face the challenges of today and tomorrow. Because each company faces different points of complexity and needs, our industry-leading solutions are purposefully designed, and amplified by GSmart AI, to support every stage of treasury complexity, from Liquidity Management and Cash Forecasting to Payments, Risk, and Netting.

With GTreasury, financial leaders gain comprehensive connectivity across all banks and ERPs to build an orchestrated data environment, enabling rapid value realization with implementations up and running in weeks. Plus, our unmatched industry expertise ensures your continued success through dedicated guidance and top-tier support.

Trusted by over 1,000 customers across 160 countries, GTreasury provides treasury and finance teams with the ability to connect, compile, and manage mission-critical data to optimize cash flows and capital structures. To learn more, visit [GTreasury.com](https://GTreasury.com).

GTreasury is headquartered in **Chicago**, with locations serving EMEA (**London**, **Geneva** and **Dublin**) and APAC (**Sydney**, **Singapore** and **Manila**).



# Contact

<b>North America</b>	847 847 3706
----------------------	--------------

<b>APAC</b>	
Sydney	+61 29262 6969
Singapore	+65 9612 2722
Manila	+63 9778022 835

<b>EMEA</b>	
London	+44 203 787 4843
Dublin	+353 1 524 0552
Geneva	+41 22 311 13 83



 [GTreasury.com](https://GTreasury.com)  
 [ContactUs@GTreasury.com](mailto:ContactUs@GTreasury.com)

