



# MARVISTA

D E S I G N + B U I L D

ARCHITECTURE • INTERIOR DESIGN • PROJECT MANAGEMENT  
PRECISION CARPENTRY





# ABOUT US

---

At Marvista Design + Build, we provide a distinctive and refined approach to the design-build process, serving as a single-source solution for busy clients. Our integrated, team-based method ensures we execute your vision with precision and creativity, delivering spaces that are both visually stunning and functional.

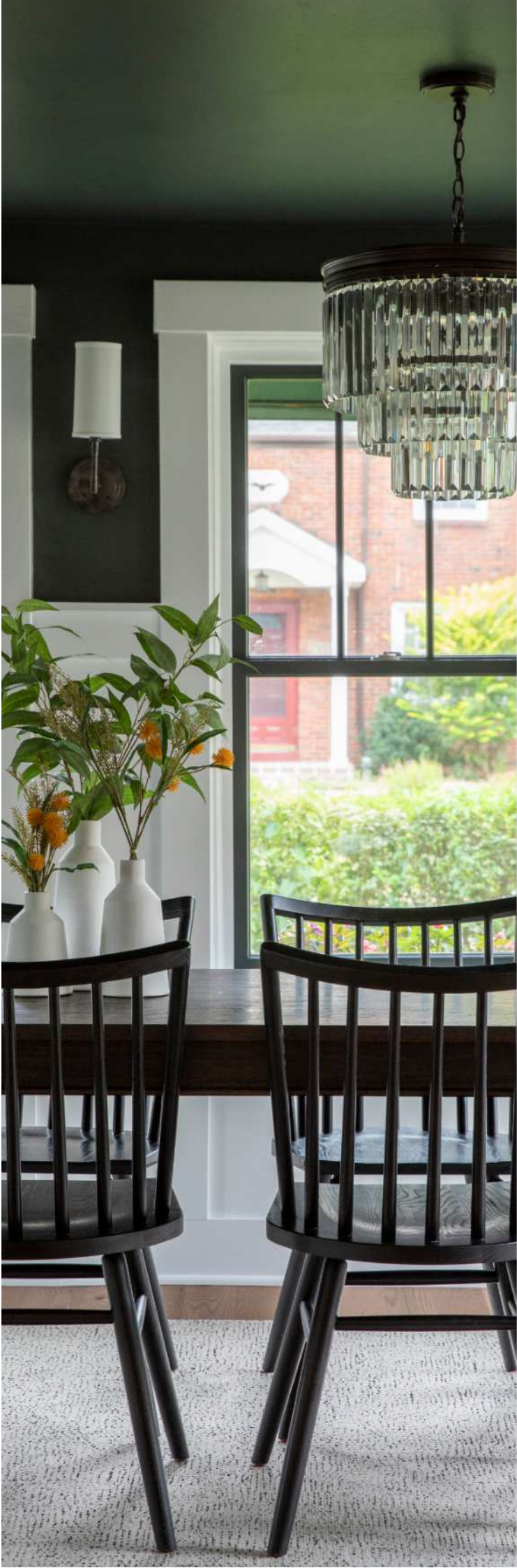
What sets us apart is our ability to maintain complete project control through our dedicated in-house expertise across **architecture, interior design, project management**, and **precision carpentry**. Keeping all these competencies under one roof, allows for seamless communication, efficient execution, and an elevated client experience from concept to completion.

Our services encompass the entire spectrum of design-build solutions, ranging from **new construction** to **renovation**. We work transparently and collaboratively with you to deliver results you'll love living in.

We invite you to explore our website and discover what truly sets Marvista Design + Build apart.

**[marvistadb.com](http://marvistadb.com)**

---



# TABLE OF CONTENTS

— 05

KITCHENS

— 23

ADDITIONS

— 31

WHOLE HOME REMODELS

— 51

BATHROOMS



KITCHENS



# ELEVATED LIVING

This Kitchen Renovation Project, in a sprawling Pittsburgh Midcentury Home, transformed a small laundry room, pantry, and kitchen into a functional space that seamlessly integrates new design with original architecture.











# TIMELESS BALANCE

This kitchen was reimagined with an impactful design that strikes the balance between modern and traditional. The layout was reconfigured to maximize storage and accommodate an expanded island, while a custom range hood anchors the space as a focal point. A built-in coffee bar, tucked into a corner with a view, adds both charm and functionality.





# CLASSICALLY CRAFTED

In Frick Park's Summerset community, this basic builder-grade kitchen was transformed into a timeless and intentionally designed space. The main kitchen features classic cabinetry in a muted two-tone palette paired with a combination of natural stone and recycled glass countertops. A multipurpose area was also created to house a wine refrigerator and microwave, complemented by wall cabinets for glassware, décor, and additional storage. Custom lighting was integrated into the cabinetry and thoughtfully concealed for a seamless finish.











# MODERN TRADITIONS

A narrow footprint transformed into a warm, welcoming space for cooking, gathering, and everyday living. With layered materials, clever storage solutions, and a palette rooted in old-world charm, this renovation honors the home's character while elevating its function.



# TUDOR TRANSFORMATION

This first-floor renovation in Pittsburgh's Point Breeze neighborhood transformed a former multi-family home into a cohesive single-family residence. Centered around a spacious, light-filled kitchen and a harmonious guest suite, the design blends classic Tudor charm with clean, transitional finishes and thoughtful indoor-outdoor flow.









ADDITIONS





# NATURAL CHARM

This home addition project in Mount Lebanon, Pittsburgh, transformed a 1939 brick house into a modern, functional space for a growing family. The homeowners, both working remotely with an expanding family, wanted more living space. The design includes a spacious open-concept living and dining area, plus a second-floor addition with a bedroom, office, laundry, and bathroom.







# SQUIRREL HILL ADDITION







WHOLE HOME  
REMODELS



## VIBRANT & WELCOMING

This 1910 Dutch Colonial Whole Home Remodel in Pittsburgh's Point Breeze neighborhood transformed a historic home into a modern, functional, and cohesive multi-generational living space. The renovation, which included both the main house and guest house, focused on enhancing openness, functionality, and connection, while preserving the home's original charm.









# MODERN AESTHETIC

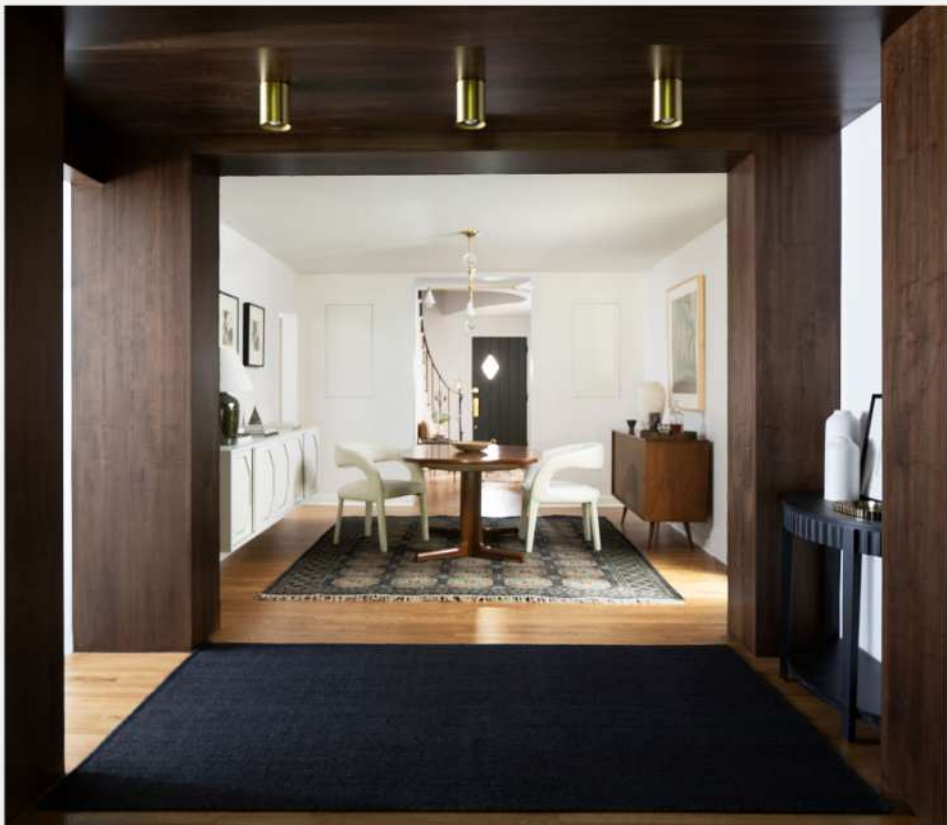
This first floor reconfiguration, of a classic 1930's Squirrel Hill home, kept in mind the homeowners' love of mid-century modern design. The kitchen showcased rich walnut finishes and quartz surfaces with a subtle concrete-inspired look, accented by hand-selected teal paint for a touch of whimsy.

A new walnut cased doorway was added from the dining room to the kitchen, dramatically improving flow and accessibility. Refinished hardwood floors, unique light fixtures, and a playful powder room added personality and charm without overwhelming the space.













# MODERNIZED CRAFTSMAN

A narrow footprint transformed into a warm, welcoming space for cooking, gathering, and everyday living. With layered materials, clever storage solutions, and a palette rooted in old-world charm, this renovation honors the home's character while elevating its function.



# CAPE COD REFRESH









# A MODERN CLASSIC

This whole home reconfiguration brings modern flow and refined updates to a 1918 Tudor Revival. The kitchen was redesigned to open up sight lines and increase usability, with high-end, integrated appliances, and a paneled refrigerator that blends into custom cabinetry.

The primary bathroom features a floating walnut vanity and clean modern lines, elevating the space with organic yet polished finishes. Throughout the home, material choices—stone, wood, and neutral tones—reinforce a design that feels both timeless and fresh.







# SERENE SPACES

In this Squirrel Hill remodel, a spare second-floor room was reimagined as a vibrant, multi-functional library and game room. Custom cabinetry with integrated pocket doors conceals a private reading nook, where a built-in wall-to-wall platform bed sits beneath a ceiling of skylights. Designed as a calming retreat, the space invites relaxation and quiet moments, whether curled up with a book or listening to the rain. The project also included a full bathroom renovation, featuring modern fixtures, rich finishes, and an earthy palette that complements the retreat-like atmosphere of the adjoining spaces.



# BATHROOMS

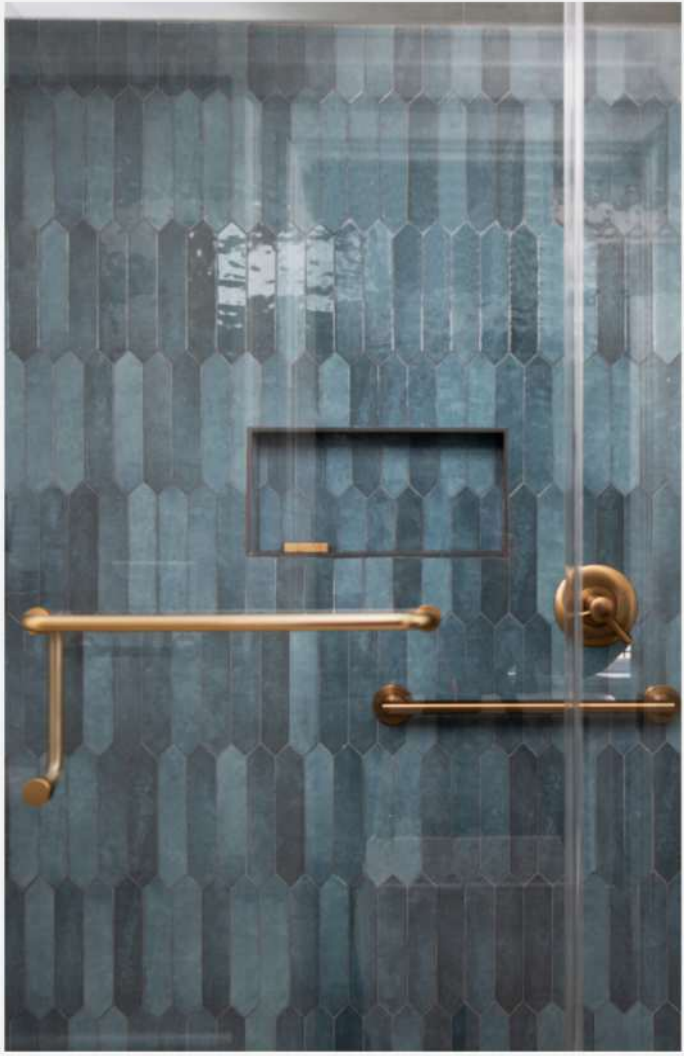






MIDCENTURY SOUL

MODERN SIMPLICITY

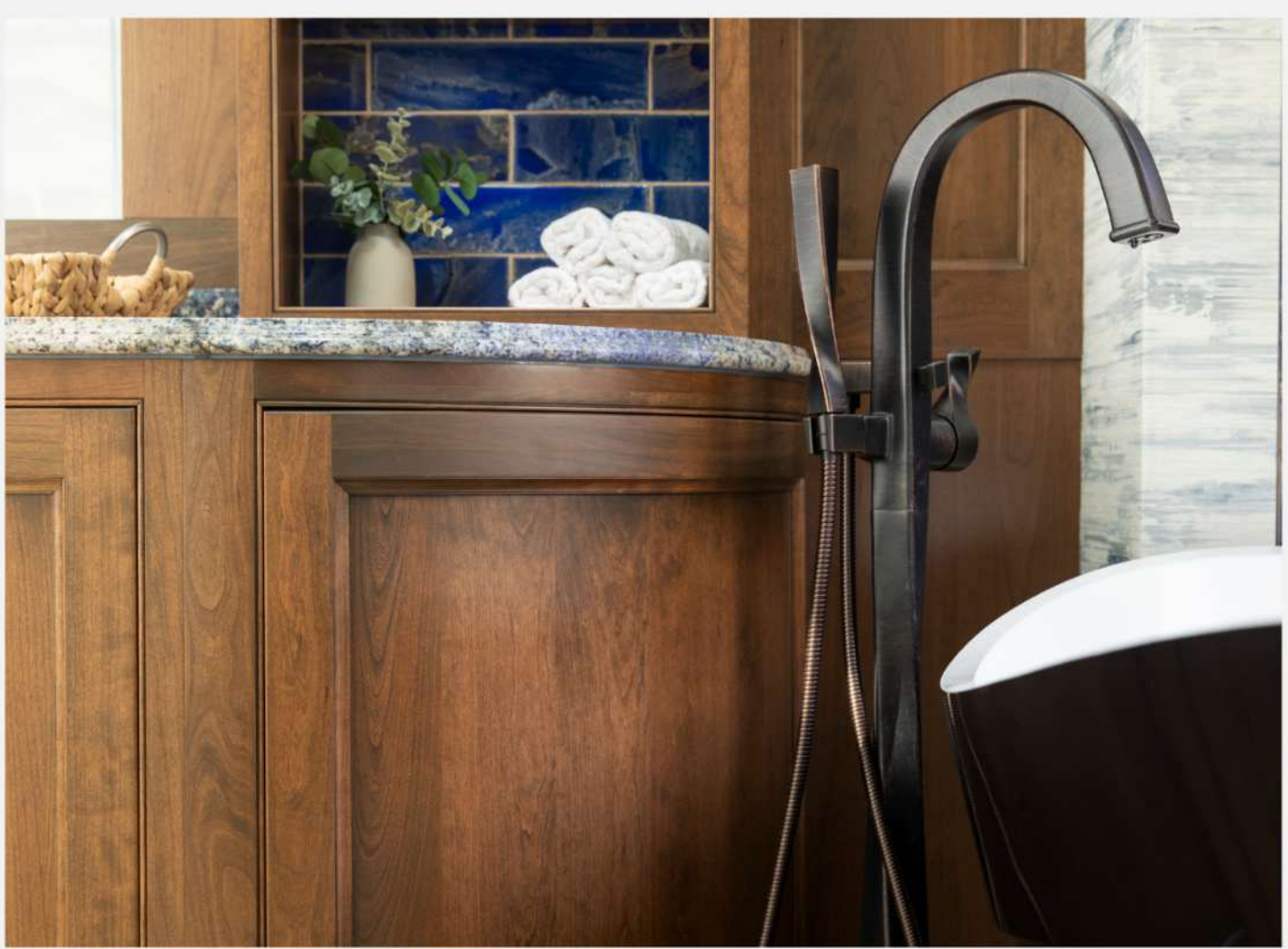






ANGULAR LUXURY

NAUTICAL INSPIRED





EARTH TONES, ELEVATED DESIGN







## WITH ROOM TO GROW





## MODERN ELEGANCE







# CORE VALUES

## INTEGRITY

We operate with honesty and integrity in all our interactions with clients, teammates, and the community. We prioritize doing what is right.

## COMMUNICATION

We believe in effective communication and attentive listening. We adhere to the principle that if it's not documented, it's not reliable; and if it's not reliable, it's not factual.

## QUALITY COMMITMENT

We are committed to consistently delivering work and services of the highest standards. Quality begins in the design phase, extends to the field, and remains consistent throughout our client's time living in their new space.

## CONTINUOUS IMPROVEMENT

We are dedicated to ongoing improvement in all aspects of our operations and personal growth and are receptive to constructive feedback.

## POSITIVITY

Be supportive and optimistic, and approach situations with a solution mindset.

## TEAM MINDSET

We are a team driven by a shared commitment to the success of our clients' projects.

# MARVISTA

D E S I G N + B U I L D

2435 BEECHWOOD BLVD PITTSBURGH, PA 15217

412-652-9027 | [MARVISTADESIGNBUILD.COM](http://MARVISTADESIGNBUILD.COM)