

Ian Parry Exhibition Catalogue



1/Dark Sea 2008
Oil on linen
Signed title date verso
70 x 70cm (stretcher)
\$3,000
B36/40.3



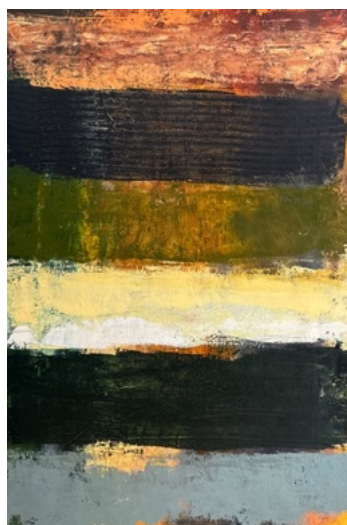
2/Solstice Storm Bay Bruny Island 2016
Oil on linen
Signed title date verso
107 x 122cm (stretcher)
Exhibition: Lloyd Rees Art Prize Finalist 2017
\$5,900
B36/41.1



3/Soliloquy Theme 2015
Oil on linen
Signed date lower centre
106 x 121cm (stretcher) 111 x 126cm (fr)
Exhibition Lloyd Rees Art Prize Finalist 2015
\$5,900
B36/40.2



4/Lenticular 2023
Oil on linen
92 x 92cm (stretcher) 96 x 96cm (fr)
Exhibition New Works Colville Gallery 11 July 2023 #1
\$5,300
B36/38.3



5/Offing 2019
Oil on linen
Signed title date verso
Gallery label verso
92 x 60cm (stretcher)
Exhibition Colville Gallery #10
\$4,600
B36/40.1



6/Seascape
Oil on board
Signed lower right
30 x 46cm (board)
\$3,500
B36/37.1



7/From Innes
Oil on linen
Signed lower right
Signed title verso
60cm x 92cm (stretcher)
\$3,000
B36/41.2



8/Moon XVI 2022
Oil on linen
50 x 50cm (stretcher)
Title verso
Colville Gallery label verso
\$2,700
B36/41.3

Ian Parry Exhibition Catalogue



9/ (Cloud & Sea) (I) 2022

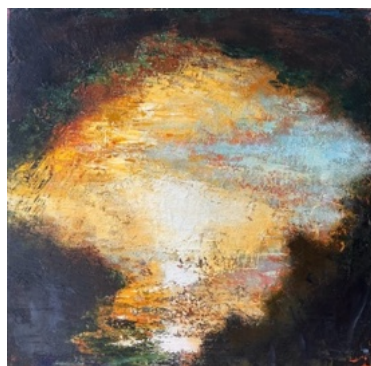
Oil on linen

Signed title date verso

51 x 51.5cm (canvas)

\$2,700

B38/24.5



10/Moon 8 Fingals Cave Isle of Staffa 2022

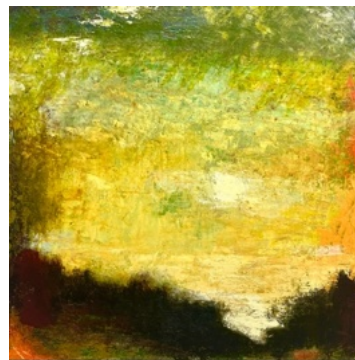
Oil on linen

Signed title signed date verso

51.5 x 51.5cm (canvas)

\$2,700

B38/24.6



11/Moon 7 from Isle of Staffa 2022

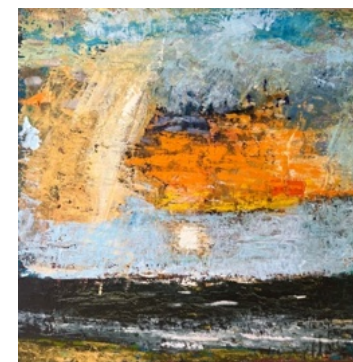
Oil on linen

Signed title date verso

51 x 51.5cm (canvas)

\$2,700

B38/25.1



12/Moon XIX 2022

Oil on linen

Signed title date verso

51.3 x 51cm (canvas)

\$2,700

B38/25.2



13/Cloudy Bay 2021

Oil on linen

Signed title date verso

51.5 x 51.7cm (canvas)

\$2,700

B38/25.3



14/Sea in Winter 2018-2023

Oil on linen

Signed title date verso

55 x 54.8cm (fr) 51.5 x 51.5cm (canvas)

\$2,700

B38/25.4



15/Hulk 3 1990

Oil on linen

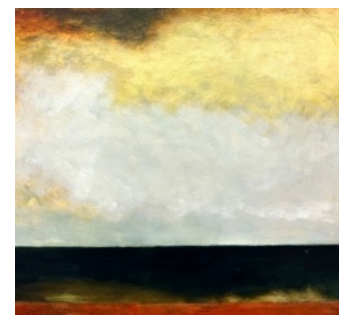
Signed lower right

Title date verso

36 x 26cm (stretcher)

\$2,300

B36/37.2



16/Seascape

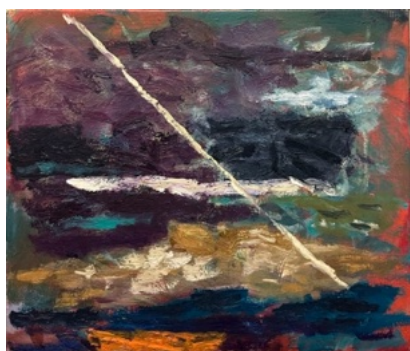
Oil on board

30 x 33cm (board)

\$2,300

B36/38.2

Ian Parry Exhibition Catalogue



17/Two Boats with Rigging 1987

Oil on linen

Exhibition labels verso

30 x 35cm (stretcher)

Exhibition 70 Arden St and CDS Gallery NY

Copper nails

\$2,300

B36/37.3



18/Gale S.W 2007

Oil on linen

Signed lower right

Title date verso

30 x 30cm (stretcher) 32.5 x 32.5cm (fr)

James Makin Gallery label verso

\$2,300

B36/38.1



19/ (Rock, Dark Mauve Sea)

Oil on canvas

37 x 45cm (sight) 60 x 68cm (fr)

\$2,200

B38/27.3



20/(Cliffs) Bass Strait

Watercolour on paper

Signed lower left

Signed verso

40.3 x 46cm (sight) 61.5cm x 64cm (fr)

\$600

B38/25.5



21/Garden View 1980

Oil on paper

Signed date lower right

Signed title date verso

24.8 x 26.8cm (sight) 51 x 46.6cm (fr)

\$800

B38/24.4



22/Cardinal 1991

Oil on paper

Signed title date verso

Gallery label verso

15 x 18cm (sheet) 47 x 42cm (fr)

Exhibition Powell Street Gallery 'Survey Geelong'

#17

\$600

B38/26.5



23/March 1981

Mixed media on paper

Signed title date lower left

Gallery label verso

19 x 26.5cm (sight) 39.8 x 45cm (fr)

Exhibition Powell Street Gallery

\$600

B38/26.6



24/Studies (Green) 1994

Watercolour and gouache

Signed date lower right

Medium date verso

13 x 21cm (sight) 38.5 x 45cm (fr)

\$400

B38/27.2

Ian Parry Exhibition Catalogue



25/Studies (Yellow) 1994
Watercolour and gouache
Signed lower right
Title medium verso
20.3 x 15.7cm (sight) 40.6 x 39.6cm (fr)
\$400
B38/27.1



26/(Trees Sky)
Charcoal on paper
Signed lower right
31 x 26.7cm (sight) 48.4 x 48.4cm (fr)
\$350
B38/25.6



27/One Tree 2006
Charcoal on paper
Signed lower right
Signed lower right
Gallery label verso
20 x 11.7cm (sight) 44.7 x 34cm (fr)
Exhibition Port Jackson Press
'Ian Parry 43 Degrees South' 2006
\$300
B38/24.1



28/Garden Study 1994
Charcoal pencil
Signed date lower right
Signed date lower right
Gallery label verso
19x19cm (sight) 42 x 39.5cm (fr)
Exhibition Ryrie Street Art Gallery Geelong
\$300
B38/26.3



29/Garden Study 1994
Charcoal pencil
Signed lower right
Signed lower right
Gallery label verso
13.5 x 8.5cm (sight) 36.2 x 28.7cm (fr)
Exhibition Ryrie Street Art Gallery Geelong
\$250
B38/26.2



30/(Window) 2001
Charcoal pencil
Signed date lower right
Signed date lower right
14 x 15.7cm (sight) 35 x 34.5cm (fr)
\$250
B38/26.1



31/Curtis Island 1992
Ink and wash
Signed date lower right
Signed date lower right
Signed verso
10.4 x 12cm (sight) 30 x 25cm (fr)
\$200
B38/24.2



32/Flinders Island, triptych 1992
Ink and wash
Signed date lower right
Signed date lower right
Signed verso
40.6 x 27cm (fr)
\$200
B38/24.3

Ian Parry Exhibition Catalogue



33/(Front Verandah)

Etching ed 7/20

Signed and ed below plate

14 x 9cm (plate)

\$150

B38/26.4