



MaxBoard® Collection

Vacuum-Formed Boards Family

MaxBoard Collection is a family of vacuum-formed boards made from a mix of Refractory Ceramic Fibers that are designed to resist high velocities and vibrations, erosive forces and mechanical stresses. The high modulus of rupture (MOR) and uniform density make these boards ideally suited for cutting or machining.

MaxBoard products are formed from a high temperature wet slurry blend of fibers and binders which can be formed into almost any shape.

MaxBoard products can be made with organic or inorganic smokeless formulations to meet your product requirements. The organic formulations contain a binding agent that will burn out during the initial heat-up by the end user, between the temperatures of 450°F and 600°F (230°C – 315°C).

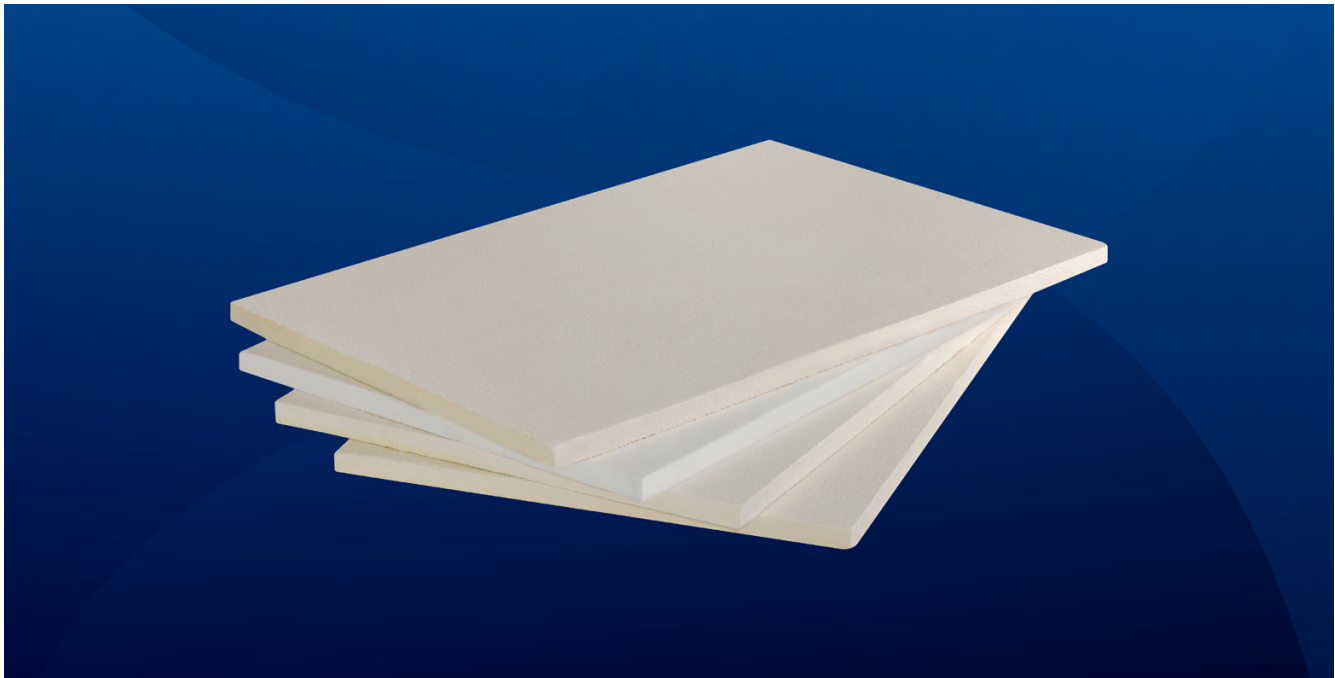
If **MaxBoard** products are dampened by water, steam or oil, the physical and thermal properties will be completely restored upon drying.

Vacuum formed boards are ideal for furnace and oven linings, boiler ducts and stacks; our line of board products are easy to handle and install, allowing for very quick turnaround times in application.

Key Features

- Low thermal conductivity
- Low heat loss and storage
- Lightweight
- High temperature stability
- Erosion resistance
- Resistance to high velocity
- Can be used in direct contact with flame
- Excellent machining and cutting characteristics
- Easy to install
- Resistant to non-ferrous metals
- Contains no asbestos
- High resistance to thermal shock
- Homogeneous structure. Machinable
- Good resistance to chemical attack, except for phosphoric acid and concentrated alkali

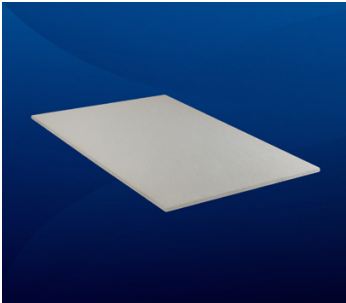
Visit nutec.com for more information



MaxBoard® Collection

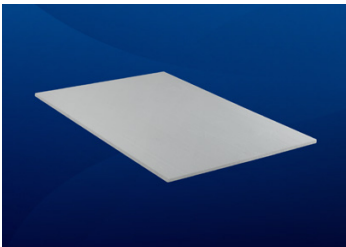
Ceramic Fiber Vacuum-Formed Boards

Technical Data Sheet Rev. 5 (4/07/2026)



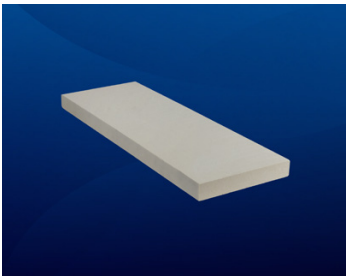
MaxBoard® LD 2300

MaxBoard LD 2300 insulating board is a low density product manufactured to tight dimensional tolerances and an excellent surface finish. Considered for application in appliances and equipment where aesthetics, uniformity and performance are important. Its temperature rating up to **2300°F** (1260°C) makes it an excellent option for a vast range of applications.



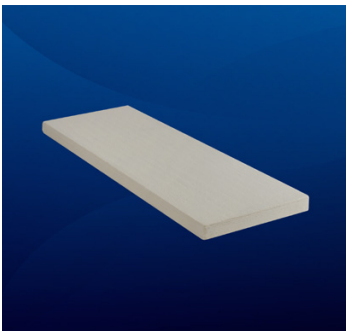
MaxBoard® ILD 2300

MaxBoard ILD 2300 is an low density board in an inorganic formulation so it can be used in applications where no off-gassing or related odors are acceptable, such as home appliances, lab furnaces and similar equipment.



MaxBoard® HD 2300

MaxBoard HD 2300 insulating boards are high density products that offer the same tight dimensional tolerances and excellent surface finish as the **MaxBoard LD** product, but provide increased compressive strength and modulus of rupture.



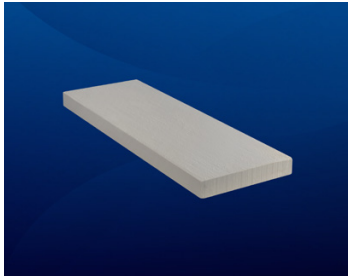
MaxBoard® HS 2400

MaxBoard HS 2400 is specifically designed for applications where there is a great amount of pressure/stress to the insulation lining. **MaxBoard HS 2400** board is highly resistant to pressure under high temperatures. This characteristic, when used as back-up behind refractory bricks or castable, prevents the appearance of cracks on the hot face lining, thus assuring longer life of the insulation and more efficient furnace heat management.

MaxBoard® Collection

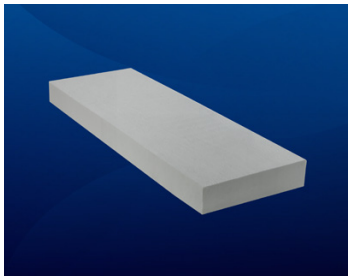
Ceramic Fiber Vacuum-Formed Boards

Technical Data Sheet Rev. 5 (4/07/2026)



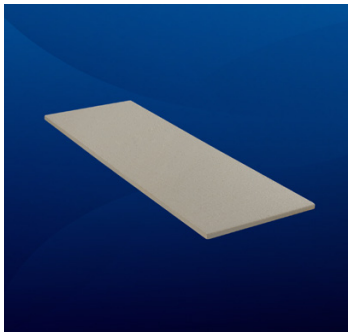
MaxBoard® LD 2600

MaxBoard LD 2600 insulating board is a low density product manufactured to tighter dimensional tolerances and excellent surface finish. Its temperature rating up to **2600°F** (1425°C) makes it an excellent option for a vast range of applications where high temperature resistance is required.



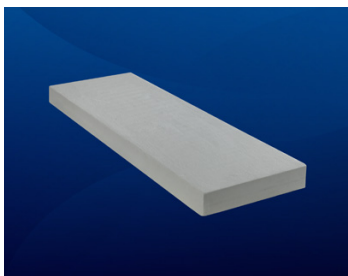
MaxBoard® HD 2600

MaxBoard HD 2600 insulating boards are high density products that offer the same tight dimensional tolerances and excellent surface finish as the **MaxBoard LD** product, but provide increased compressive strength and modulus of rupture.



MaxBoard® 2600 FP

MaxBoard 2600 FP is a special chemical and abrasion-resistant high density insulation board commonly used as baffle tiles in gas and wood stoves, combustion chambers, auxiliary combustion chambers and biomass applications where resistance to direct flame contact is required. **MaxBoard 2600 FP** has the ability to resist regular deformation that occurs with other standard alumina-silica-based products.



MaxBoard® 3000

MaxBoard 3000 has the highest temperature rating of any **NUTEC** board product. It is formulated from a blend of ceramic and mullite fibers that create an excellent high temperature insulation board with low thermal shrinkage and excellent high temperature stability.

MaxBoard® Collection

Ceramic Fiber Vacuum-Formed Boards

Technical Data Sheet Rev. 5 (4/07/2026)

PHYSICAL PROPERTIES	MaxBoard LD 2300	MaxBoard LDI 2300	MaxBoard HD 2300
Color	Cream/Tan	Cream/Tan	Cream/Tan
Density lb/ft ₃ (kg/m ₃)	16-20 (256-320)	16-20 (256-320)	26-30 (416-480)
Maximum Use Temperature	2300°F (1260°C)	2300°F (1260°C)	2300°F (1260°C)
Continuous Use Temperature	2100°F (1150°C)	2100°F (1150°C)	2100°F (1150°C)
Melting Point	3150°F (1732°C)	3092°F (1700°C)	3150°F (1732°C)
Modulus of Rupture, Green Type (fired 24 hr @ cont. use) psi	100 (50) Minimum	100 (100) Minimum	150 (50) Minimum
Loss of Ignition	4-7	0 Volatile Elements	4-5

LINEAR SHRINKAGE (%, 24 hr @ operating temp)	MaxBoard LD 2300	MaxBoard LDI 2300	MaxBoard HD 2300
@2012°F (1100°C)	•	•	•
@2192°F (1200°C)	<5	<5	<5

CHEMICAL ANALYSIS (%, weight basis after firing)	MaxBoard LD 2300	MaxBoard LDI 2300	MaxBoard HD 2300
Al ₂ O ₃	39-41	37-43	43-45
SiO ₂	52-54	56-62	47-49
ZrO ₂	•	•	•
CaO	•	•	•
MgO	•	•	•
Other	2-3	•	2-3

Data are average results of tests conducted under standard procedures and are subject to variation. Results should not be used for specification purposes.

Please refer to the product Safety Data Sheet (SDS) for recommended work practices and other product safety information.

NUTEC Inc.

11830 Mt Holly-Huntersville Rd
Huntersville
NC 28078
USA

1 (704) 946-2427
info@nutec.com



MaxBoard® Collection

Ceramic Fiber Vacuum-Formed Boards

Technical Data Sheet Rev. 5 (4/07/2026)

PHYSICAL PROPERTIES	MaxBoard HS 2400	MaxBoard LD 2600	MaxBoard HD 2600
Color	White	Cream/Tan	Cream/Tan
Density lb/ft ₃ (kg/m ₃)	31-37 (497-593)	16-20 (256-320)	26-30 (416-380)
Maximum Use Temperature	2400°F (1316°C)	2600°F (1425°C)	2600°F (1425°C)
Continuous Use Temperature	2300°F (1260°C)	2300°F (1260°C)	2300°F (1260°C)
Melting Point	•	3236°F (1780°C)	3236°F (1780°C)
Modulus of Rupture, Green Type (fired 24 hr @ cont. use) psi	300 - 400	100 (50) Minimum	150 (50) Minimum
Loss of Ignition	3 - 5	4-7	4-5

LINEAR SHRINKAGE (%, 24 hr @ operating temp)	MaxBoard HS 2400	MaxBoard LD 2600	MaxBoard HD 2600
@2192°F (1200°C)	<3	<3	<3
@2700°F (1482°C)	•	•	•

CHEMICAL ANALYSIS (%, weight basis after firing)	MaxBoard HS 2400	MaxBoard LD 2600	MaxBoard HD 2600
Al ₂ O ₃	14 - 16	40-50	50-60
SiO ₂	84 - 86	50-60	40-50
ZrO ₂	•	5-10	5-10
CaO	•	•	•
MgO	•	•	•
Other	<1	2-3	1

Data are average results of tests conducted under standard procedures and are subject to variation. Results should not be used for specification purposes.

Please refer to the product Safety Data Sheet (SDS) for recommended work practices and other product safety information.

NUTEC Inc.

11830 Mt Holly-Huntersville Rd
Huntersville
NC 28078
USA

1 (704) 946-2427
info@nutec.com



MaxBoard® Collection

Ceramic Fiber Vacuum-Formed Boards

Technical Data Sheet Rev. 5 (4/07/2026)

PHYSICAL PROPERTIES	MaxBoard 2600 FP	MaxBoard 3000
Color	Tan	Cream/Tan
Density lb/ft ₃ (kg/m ₃)	26-30 (416-480)	26-30 (416-480)
Maximum Use Temperature	2600°F (1425°C)	3000°F (1649°C)
Continuous Use Temperature	2400°F (1316°C)	2800°F (1482°C)
Melting Point	3236°F (1780°C)	3400°F (1871°C)
Modulus of Rupture, Green Type (fired 24 hr @ cont. use) psi	•	150 (55) Minimum
Loss of Ignition	4-5	4-6

LINEAR SHRINKAGE (%, 24 hr @ operating temp)	MaxBoard 2600 FP	MaxBoard 3000
@2192°F (1200°C)	<3	•
@2700°F (1482°C)	•	<2

CHEMICAL ANALYSIS (%, weight basis after firing)	MaxBoard 2600 FP	MaxBoard 3000
Al ₂ O ₃	54-58	64-68
SiO ₂	40-44	32-36
ZrO ₂	•	•
CaO	•	•
MgO	•	•
Other	2-3	•

Data are average results of tests conducted under standard procedures and are subject to variation. Results should not be used for specification purposes.

Please refer to the product Safety Data Sheet (SDS) for recommended work practices and other product safety information.

NUTEC Inc.

11830 Mt Holly-Huntersville Rd
 Huntersville
 NC 28078
 USA

1 (704) 946-2427
 info@nutec.com

