



ACCESSORY

Low Voltage Weatherproof Connector

Job Name:

Date:

Model:

Quantity:

Features

- ❖ Designed for low voltage landscape lighting
- ❖ Pre-filled with Silicon Sealant in cap
- ❖ Quick Installation
- ❖ Long Term Performance
- ❖ Two-piece construction: cap with snap lock seal to base

Specifications

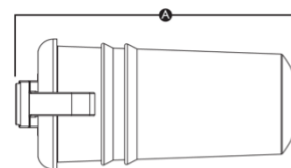
- ❖ Weatherproof
- ❖ Direct Burial
- ❖ Solid or stranded 18 AWG to 10 AWG
- ❖ For low voltage connection only
 - 30 Volts Maximum
- ❖ Sealant Temperature: -40° to 400° F
- ❖ Connector Size: 2.5" x 1.5"
- ❖ 20 connectors in package
- ❖ 200 Bulk packed



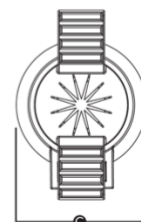
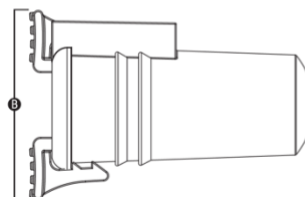
Wire Combinations

2 #18	4 #18	2 #12
2 #12 w/ 3 #18	2 #10	2 #10 w/ 3 #18

Measurements



A – 2.263"
B – 1.516"
C – 1.042"



Ordering

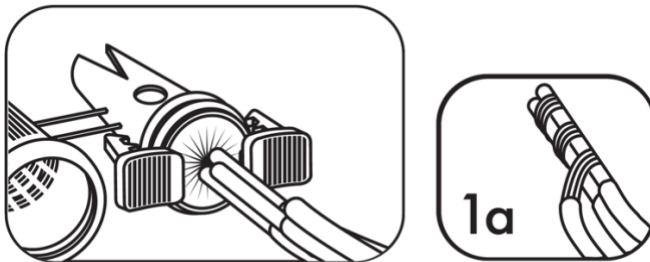
PART NUMBER	UPC	QUANTITY
X1WPC	852140007292	20 pc per pack
X1WPC-200	850016499233	200 per box



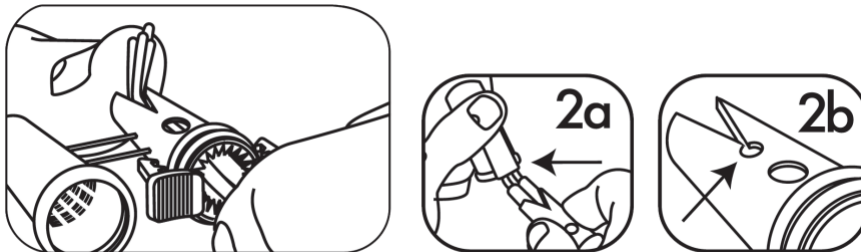
Installation Instructions

IMPORTANT: Turn off power before installing or removing connector. Product to be used in accordance with local and national codes.

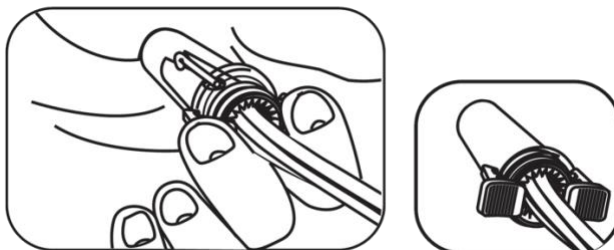
1. Strip wires 1" and group bare wire ends together. Do not pre-twist solid wire. You must pre-twist stranded wire. If using both wire types, you must wrap stranded wire around untwisted solid wires (1a).



2. Insert wires through flexible sealing fingers and bend bare wire ends together into one "V-Channel". When connecting heavy solid wires, use bending sleeve/depth gauge on outer sleeve of connector (2a). For larger connections (e.g. two #12 wires, or equivalent, or more), bend wires into the V-Channel with round hole at bottom (2b); pull folded group of wires downward into this hole at bottom of "V".



3. Separate connector, removing plastic "link" or "leg" from inner sleeve. Push inner sleeve into pre-filled outer sleeve until double-locked. Ensure that bending sleeve does not come down over either latch. Pre-filled sealant fully waterproofs the connection. Do not reuse.





ACCESSORY

Weatherproof Connector – Medium Size

Features

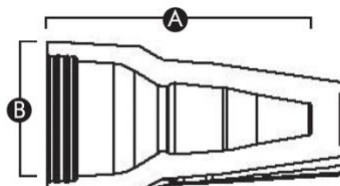
- ❖ Designed for use in landscape lighting, irrigation and direct bury applications
- ❖ Filled with a dielectric silicone sealant
- ❖ Waterproof and corrosion proof
- ❖ 1 Step installation with no pre-twisting of wires necessary



Specifications

- ❖ Direct Burial
- ❖ Solid or stranded 22 AWG to 8 AWG
- ❖ Max. Voltage: 600V max. building wire
- ❖ Temperature Rating: 221° F
- ❖ Sealant Temperature: -40° to 400° F
- ❖ Connector Size: 1.30" x 0.67"
- ❖ 20 connectors in package
- ❖ 100 Bulk packed

Measurements



A – 1.30"
B – 0.67"
C – 0.51"



Wire Combinations

1 - 3 #10	1 - 4 #12	2 #14 w/ 2 - 4 #16
1 #12 w/ 1 - 4 #14	2 - 5 #14	1 #10 w/ 1 - 3 #14
1 #12 w/ 2 - 4 #18	2 - 6 #16	1 #14 w/ 3 - 4 #18
4 #14 w/ 1 - 2 #18	1 #12 w/ 1 - 4 #16	2 #12 w/ 1 - 2 #14

*Contact us for complete list of wire combinations.

Ordering

PART NUMBER	UPC	QUANTITY
X1WPCM	850041316888	20 pc per pack
X1WPCM-100	850041316956	100 pc per pack

Installation Instructions

IMPORTANT: Turn off power before installing or removing connector. Product to be used in accordance with local and national codes.

1. Strip wires 5/8".
2. Align frayed strands or conductors.
3. Pre-twisting unnecessary. Place stripped wires together with ends of insulation even.
4. Twist connector onto wires pushing firmly until hand-tight. Do not over torque.
5. Wipe sealant in and around conductors and connector opening while tightening. Do not reuse.

