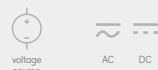


GE+ vAC/DC Full ePLUS

Regenerative AC/DC Grid Emulator

The GE+ vAC/DC Full is the most complete and flexible Voltage Source, for AC and DC Test Platforms. Based on a Regenerative and Bidirectional power hardware, it is an essential laboratory device for testing and R&D applications in Renewable Energy Sources (PV, WT, CHP), grid connected devices, Smartgrids, Batteries, Electrical Vehicles and EV Chargers and Power HiL.

Key features



Bidirectional and Regenerative
Clean grid current: THDi < 3% and PF > 0.98
Same power in DC and AC

Generation of Worldwide electrical grids:

3-phase/ 1-phase/ split phase/ Multichannel

Independent phase configuration of:

voltage rms, phase angle, frequency and harmonics

Generation of disturbances:

harmonics, interharmonics, subharmonics, voltage dips
frequency variation, flicker

Disturbance Generation Editor compatible with IEC, LVRT, SEMI-F47, CBEMA test standards

Modbus/Ethernet Open protocol, Labview drivers

What's new

MASTER/SLAVE CONNECTION

up to 8 units using a fiber optics link to increase power/voltage capabilities:

- GE mode: can be connected in parallel
- B2C: can be connected in parallel, or serial or serial/parallel

IMPROVED CONTROL

30kHz closed control loop frequency with 300kHz oversampling technique

MORE HARMONICS

50 per phase with 20 free-harmonics, in AC models

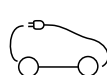
SELECTABLE SLEW RATE FOR DC

for the fastest transients and highest stability

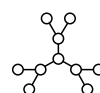


ePLUS keeps the robustness, ratings and all the functionalities of the PLUS platform and adds the new features described in this datasheet

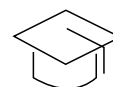
Main Applications



ELECTROMOBILITY



SMARTGRIDS



ACADEMIC & RCP



IEC TESTING



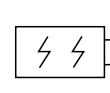
PHOTOVOLTAIC



INDUSTRIAL TEST



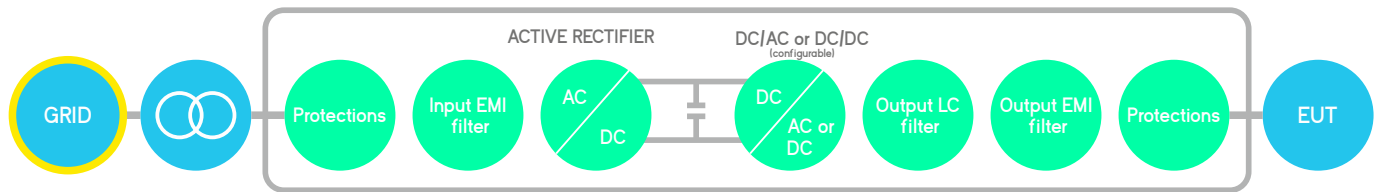
POWER HiL



ENERGY STORAGE SYSTEM



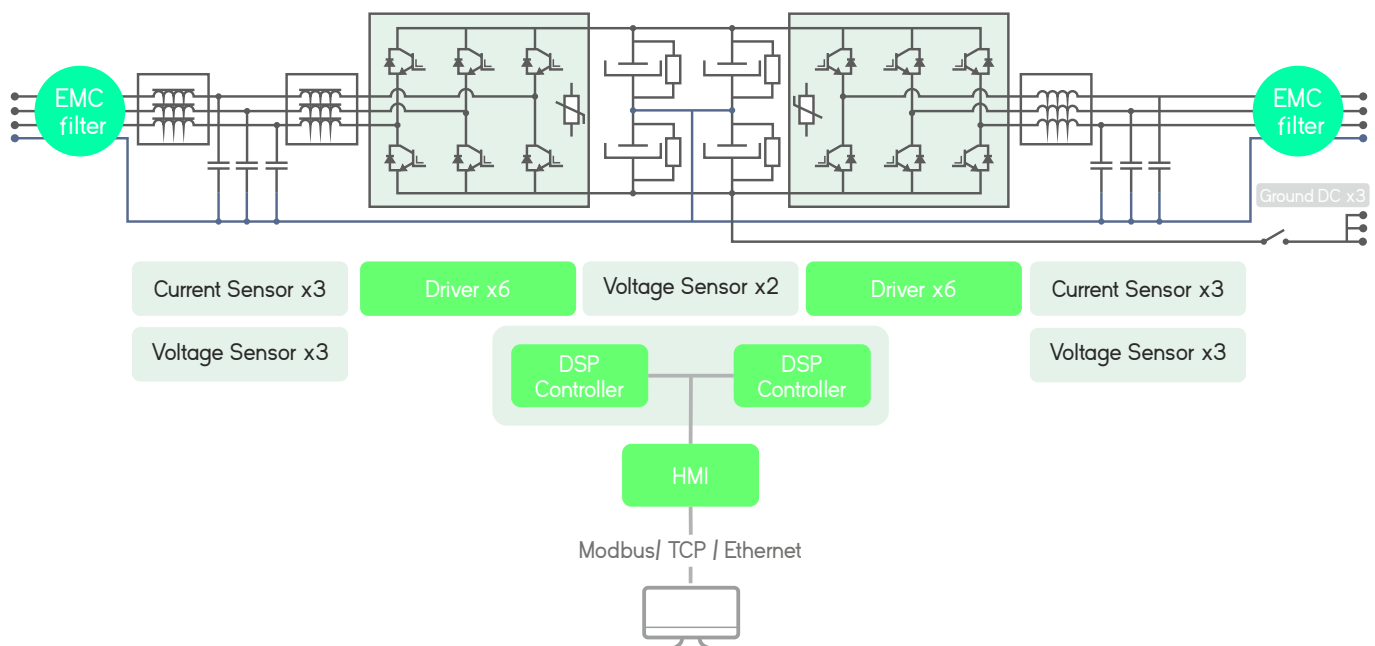
Bidirectional and Regenerative Hardware



The hardware platform is based on a Back-to-Back power conversion topology, formed by two IGBT-based power stages. The grid side stage is an Active Rectifier which produces clean sinusoidal currents with very low harmonic distortion and power factor close to one.

The EUT side stage can be configured for AC voltage source or AC current source or DC output. In AC, voltage/current are controlled by using state of the art digital Proportional-Resonant controllers. In DC, the three independent buck-boost bidirectional legs enable the separated control of three different DC voltages or currents.

Block diagram



Local Interface

Analogue and Digital IO ports

The isolated digital and analogue inputs/outputs permit the connection of the unit to External Controllers and Power Hardware in the Loop systems (option).

4.3" Touchscreen

Allows the local parameterization and command of the device, configuration of the communications link, plots the main signals and enables the local datalogging.

Safety First

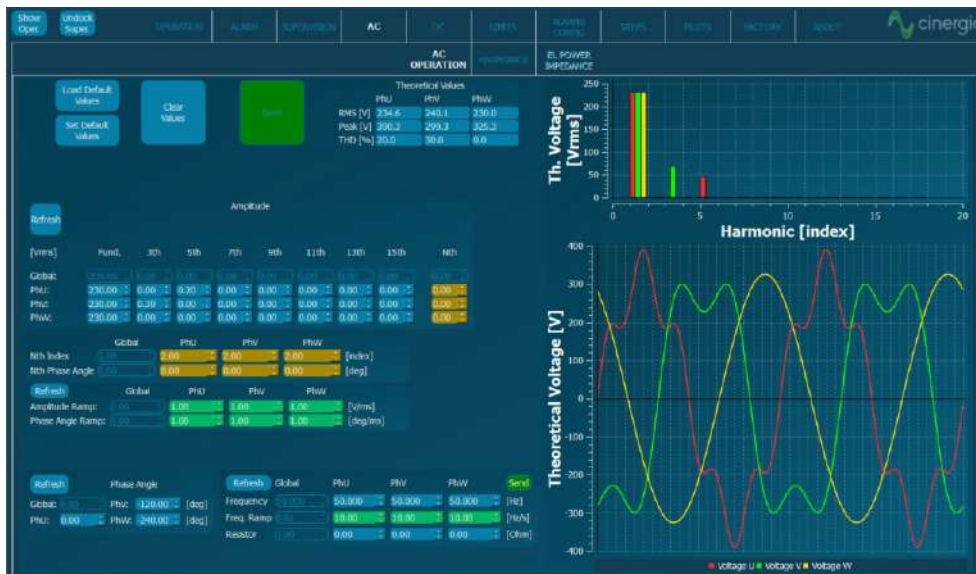
The units integrate a local Emergency Stop pushbutton and two signals (input + output) to be connected to the laboratory interlock system. Additionally, the digital outputs can be interfaced to safety tower lights.

Master/Slave

ePLUS is a modular platform enabling the master/slave connection of units with equal power.



Software Interface in GE+



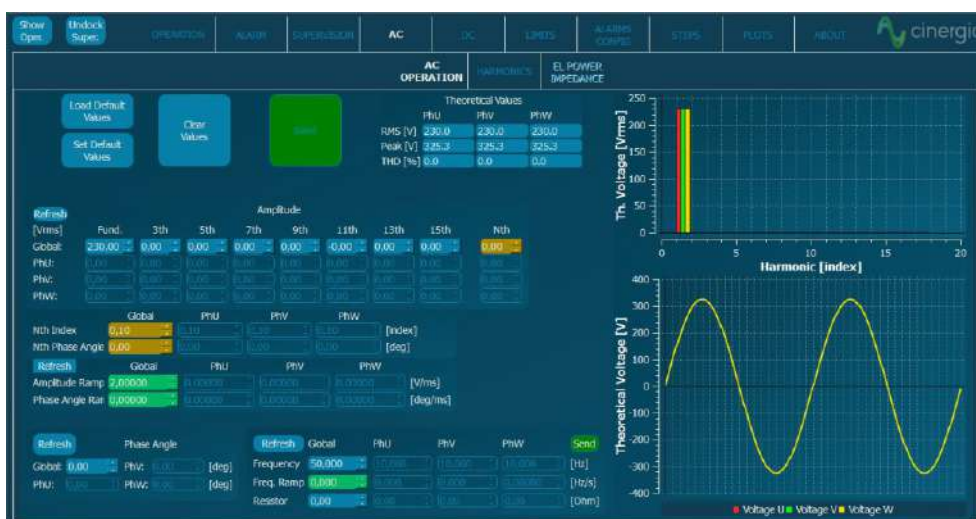
AC Operation

From this panel, the user can set all AC parameters. Each phase can be independently configured: RMS voltage (GE+) or current (EL+) magnitude, phase delay, harmonics content, free-frequency harmonic and transition ramps. A plot shows the expected real-time waveform, the FFT representation and the numeric data: RMS, peak, CF and THD.



Harmonics

The device can control simultaneously the magnitude of the first 50 harmonics and 20 free harmonic per phase. These free ones allows the generation of sub-harmonics, inter-harmonics and high frequency harmonics up to the 50th, setting both the magnitude and phase delay.



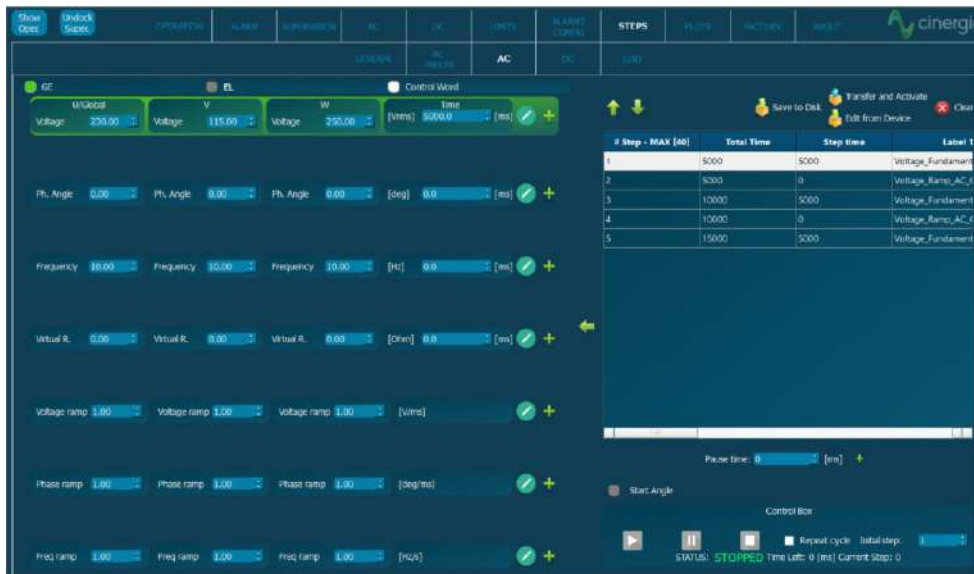
1-channel Mode/Parallel

The device can be controlled in 1-channel mode where all phases are short-circuited internally. This mode it's suitable for single-phase applications.

To increase the total power of the solution, the device can be connected in parallel* with multiple devices.

*For this connection contact us.

Advanced AC Software Applications



Steps Mode

One of the most remarkable novelties of the new software is the steps functionality.

Step test files are saved and executed by the DSP allowing deterministic timing with a resolution of 66µs.

The user gains access to all registers of the device to create complex test sequences which run directly in the converter without the need of an external computer.



Disturbance Generation

The steps mode includes predefined easy-to-use test panels. The AC faults panel is a powerful yet intuitive editor which allows generating and configuring voltage dips, frequency variation, flicker and LVRT. Specific profiles can be saved in .csv files, modified, and reused by importing an existing one. The LVRT page have predetermined profiles for different countries.



Option IEC Testing

The last version of software includes a library supporting IEC compatible tests. The profiles defined in the standards are preloaded in the software for a user friendly execution and edition. Currently the following standards are available:

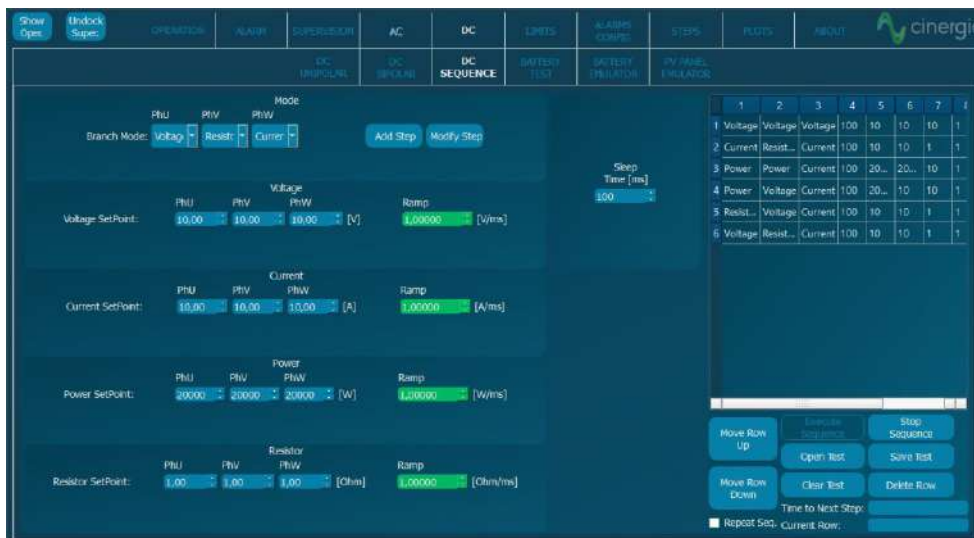
- IEC61000-4/11
- IEC61000-4/13
- IEC61000-4/14
- IEC61000-4/28

Software Interface in DC



DC Operation

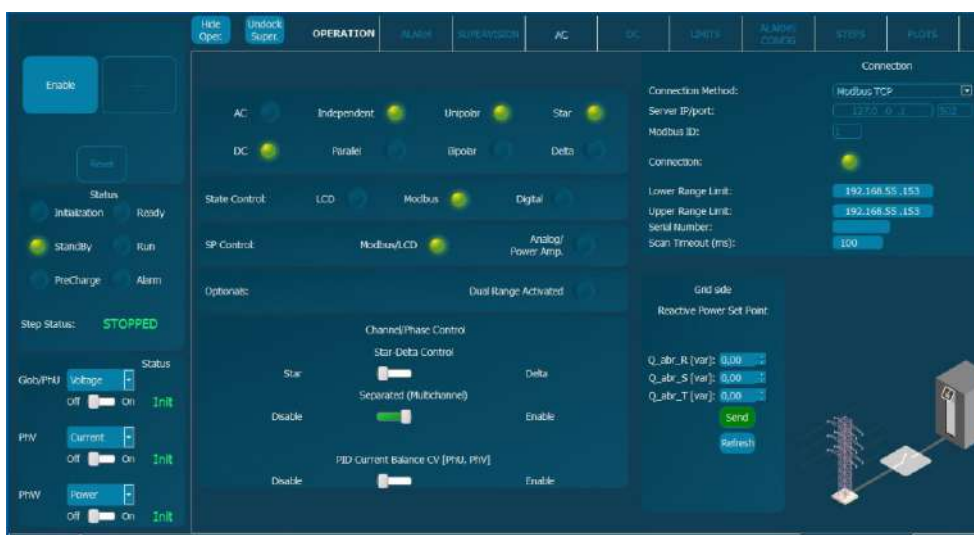
This panel allows the user to access all DC setpoints and limits. Thanks to the unique Multichannel feature, each phase can have a different Operation Mode: voltage, current, power, resistance and advanced DC applications. Transition ramps, voltage and current limits can be modified. The limits for sink and source operation are different for safer testing, specially in battery applications.



Sequence

The User Interface Software integrates a Sequence Editor to create automatic test sequences, save them for future use and import them in .csv files.

A smart datalogger can be activated from the LCD of the unit to record automatically the resulting voltage and current measurements with a time resolution of 400 ms.



Multichannel

Enabling the Separated Channel Control converts the device in three functionally independent DC Bidirectional Power Supplies, sharing the common negative rail. Each channel can have a different status (ON, OFF, Warning, Alarm), Operation Mode (see Range and Specifications table), Setpoint, Ramp and Limits.

Advanced DC Applications



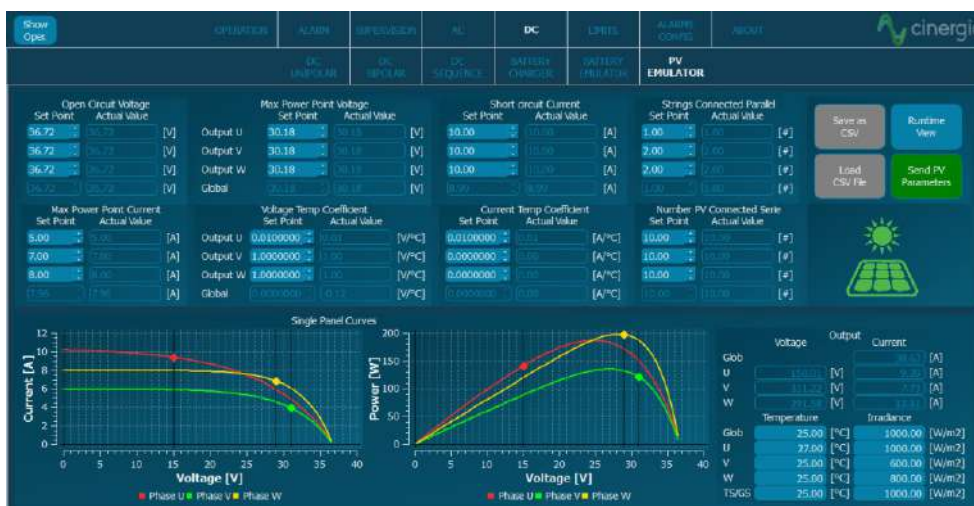
Battery Pack Testing

This functionality enables the user to precisely control the charge, discharge and cycling of a Battery. Basic parameters include the charge/discharge current, fast charge and floating voltages while Advanced parameters add Energy (Ah) and Time as transition conditions. Profiles for each Battery technology can be saved and imported in .CSV files.



Battery Emulation

The B2C+ integrates a mathematical model to emulate the voltage behaviour of a real battery pack. The output voltage will change as a function of the SOC and Current. By configuring the provided parameters, the voltage profile can be adjusted to match different technologies: Lilon, NiMH, NiCd, Pb, Flux, etc.



PV Panel Emulation

The PV Panel model is based on the single-diode equivalent circuit of a PV cell and the series-parallel connection of cells to form a panel. A Runtime functionality allows the simulation of a complete day by launching different irradiance and temperature setpoints from a .csv file, enabling the user burn-in and functional tests of PV Inverters.

GE+ vAC/DC Range & Specifications

Input side (GRID side)

AC Voltage

Rated: 3x400Vrms + Neutral + Earth

Range: +15% / -20%

Rated AC Current

Depends on model (see Wiring Manual)

Frequency

48-62Hz

Current Harmonic Distortion

THDi < 3% at rated power

Current Power factor

PF > 0.98 at rated power

Efficiency

≥ 89% (7.5 & 10), ≥ 91% (15 to 30), ≥ 92% (40 to 200)

Output side in DC (EUT side)

Terminals

Number: 6 (3 positive + 3 negative)

Configuration of Channels

Unipolar 3-channels 2Q, independent setpoints per channel

Unipolar 1-channel 2Q, one global setpoint for all channels

Multichannel: 2Q, independent start/stop, operation mode and setpoints per channel (note: multichannel is an option for ≥ 80kVA)

Bipolar (4Q two independent setpoints)

Voltage Mode (CV)

Range: 2Q: 20⁽¹⁾ to 750V (800V with High Voltage option)

4Q: 0 to +350V / 0 to -350 (+ rail / 0 / - rail, Bipolar configuration)

Setpoint Resolution: 10mV

Effective Resolution⁽²⁾: < 0.05% of FS⁽³⁾

Setpoint Accuracy⁽⁴⁾: ± 0.1% of FS⁽³⁾

Transient Time⁽⁵⁾: < 1ms (10% to 90% at a step to Vrated)

Ripple⁽⁷⁾ (peak-peak): < 0.55% of FS⁽³⁾

Current Mode (CC)

Range: from 0 to ± 110% of Irated (see models table)

Setpoint Resolution: 10mA

Effective Resolution⁽²⁾: < 0.05% of FS⁽³⁾ (< 0.1% models 7.5 & 10)

Setpoint Accuracy⁽⁴⁾: ± 0.2% of FS⁽³⁾

Transient Time⁽⁵⁾: < 1ms (10% to 90% at a step to Irated)

Ripple⁽⁷⁾ (peak-peak): < 0.7% of FS⁽³⁾

Power Mode (CP)

Range: from 0 to ± 200%⁽⁸⁾ of Prated (see models table)

Derived current setpoint: Psetpoint / Vmeasured

Setpoint Resolution: 1W

Effective Resolution⁽²⁾: < 0.1% of FS⁽³⁾ (< 0.25% models 7.5 & 10)

Setpoint Accuracy⁽⁴⁾: ± 0.4% of FS⁽³⁾

Transient Time⁽⁵⁾: < 2.5ms (10% to 90% at a step to Prated)

Resistance Mode (CR)

Range: from 0.1 to 1000 Ohm

Derived current: Vmeasured / Rsetpoint

Setpoint Resolution: 0.01 Ohm

Setpoint Accuracy⁽⁴⁾: ± 0.2% of FS⁽³⁾

Transient Time⁽⁵⁾: < 2ms (10% to 90% at a step to Rrated))

Output side in AC (EUT side)

Terminals

Number: 4 (3 phases + 1 neutral)

Configuration of Channels

3-channels: 4Q, independent setpoints per phase

1-channel: 4Q, global setpoints for all phases (only in GE+)

Multichannel: 4Q, independent start/stop, alarm status and setpoints per phase (note: multichannel is an option for $\geq 80\text{kVA}$)

Output side in GE-AC

Voltage Mode (CV)

Peak: $\pm 400\text{V}$ phase-neutral

Range: $0^{(1)}$ to 277Vrms phase-neutral (295Vrms with HV option)

$0^{(1)}$ to 480Vrms phase-phase (510Vrms with HV option)

THDv: $< 0.1\%$ rated linear load at 230Vrms , $50/60\text{Hz}$

$< 0.9\%$ rated non linear load $\text{CF}=3$ at 230Vrms , $50/60\text{Hz}$

Setpoint Resolution: 10mVrms

Effective Resolution⁽²⁾: $< 0.05\%$ of $\text{FS}^{(3)}$

Setpoint Accuracy⁽⁴⁾: $< \pm 0.1\%$ of $\text{FS}^{(3)}$

Transient Time⁽⁵⁾: $< 1.5\text{ms}$ (10% to 90% at a step to V_{rated})

Ripple⁽⁷⁾ (peak-peak): $< 0.55\%$ of $\text{FS}^{(3)}$

Enhanced

Harmonics

Range: up to 50th (at $50/60\text{Hz}$ fundamental)

50 independent harmonics per phase:

20 free programmable frequency and phase from 0.1 to 50 times f_0

30 fixed frequency

Harmonics content: $V \cdot f < 46000$ (with current derating)

Setpoint Accuracy⁽⁴⁾: same as voltage accuracy

Small Signal Bandwidth: up to $5000\text{Hz}^{(9)}$

Transient Time⁽⁵⁾: $< 2\text{ms}$ (10% to 90% at a step change)

Frequency

Fundamental Frequency Range: 10 to 100Hz (up to 400Hz option)

Small Signal Bandwidth: up to $5000\text{Hz}^{(9)}$

Resolution: 1mHz

Phase Angle

Range: 0 to 360°

Resolution: 0.01°

Operation Modes

DC

Programmable Voltage (CV)
Programmable Current (CC)
Programmable Power (CP)
Programmable Resistance (CR)
Power Amplifier (HiL)
Steps
Optional Battery Testing (BTest)(charge/discharge/cycling)
Optional Battery Emulation (Bemu)
Optional PV Panel Emulation (PVEmu)

AC

Programmable Voltage (CV)
Power Amplifier (HiL)
Steps
Optional LVRT, IEC 61000 -4-11, 4-13, 4-14, 4-28

Overload/Overcurrent

Admissible DC overcurrent is: 110% of rated value during 1 minute
Admissible AC overcurrent: 125% of rated value during 10 minutes,
150% during 1 minute, 200% during 2 seconds
Admissible overloads: 125% of rated value during 10 minutes,
150% during 1 minute, 200% during 2 seconds

User Interface

Local Control (4.3" Touchscreen panel)

Isolated Digital port: 6 inputs, 4 outputs
Isolated Analogue port: 6 inputs (rms setpoints or power amplifier),
6 outputs (rms readback or real-time readback)
Interlock port: 1 NC Input, 1 NO Output
Emergency Stop pushbutton

Remote Control Port

LAN Ethernet with Open Modbus-TCP protocol
RS485 (option), CAN and RS232 (using external gateway)

Software

Graphical User Interface for Windows 7/10
LabView drivers and open Labview interface example

Enhanced

Master/Slave operation

Connection: fiber optics link (x6)
Configuration: from software user interface/MODBUS
up to 8 units:
AC: parallel
DC: parallel, serial or serial-parallel



Protections

Overvoltage (peak, rms), Overcurrent (peak, rms), Overload
Shortcircuit, Emergency Stop, Watchdog, Heart Beat, Output
Contactor, Wrong Configuration
Alarms and Limits are user configurable and can be saved in a
password protected EEPROM

Mesurements⁽⁶⁾

Grid Voltage (rms), Current (rms), Power (P,Q) and Frequency
Output Voltage (rms, avg), Current (rms, avg), Power (P,Q) and
Frequency
Heatsink Temperatures (x2) and DC Link Voltage
Datalogging available through FTP connection

Ambient

Operating temperature⁽⁸⁾: 5-40°C
Relative Humidity: up to 95%, non-condensing
Cooling: Forced air
Acoustic noise at 1m: < 52dB(A)(7.5 to 60), < 65dB(A)(80 to 120), < 70dB(A)(160 and 200)

Standards

CE Marking
Operation and Safety: EN-50178, EN-62040-1
EMC: EN-62040-2
RoHS

All specifications are subject to change without notice.

Options

Choose your options

- Galvanic Isolation
- Multichannel mode: allows different operation mode, start/stop/reset per channel (included in all models from 7.5 to 60, both included)
- 30kHz Switching Frequency: only available for models 15 (derated to 7.5kW), 20 (derated to 7.5kW) and 30 (derated to 10kW)
- Isolation monitor (advised for IT systems)
- Low voltage ripple capacitance
- High Frequency 360 - 900 Hz
- Anti-islanding monitor (only advised in net injection to the grid and following local regulations)
- High Voltage (HV): voltage up to 295Vrms phase-neutral in AC up to 800V in DC
- RS485
- Battery Emulation
- Battery Test
- PV Panel Emulation
- Predefined Tests: LVRT, IEC 61000-4-11, 4-13, 4-14, 4-28 (consult us for specific Test)
- External gateway for RS232, CAN and others (consult us for specific gateway)

All specifications are subject to change without notice.

(1) Minimum voltage setpoint is 0V in DC. The recommended minimum setpoint for long-term use is 20Vrms in AC and 20V in DC.
(2) Effective resolution measured with a 400ms window
(3) FS Range of voltage is 800V (with High Voltage option)
FS Range of current is $2\sqrt{3} \cdot I_{rated}$ (see models table)
FS Range of power is $2\sqrt{200\%} \cdot P_{rated}$ (see models table)

(4) Accuracies are valid for settings above 10% of FS
(5) Measured with the rated resistive load and high-dynamics controllers configuration
(6) Accuracy of measurements is $\pm 0.1\%$ of FS for rms voltage, $\pm 0.2\%$ of FS for rms current, $\pm 0.4\%$ of FS for active power (valid only above 10% of FS)
(7) Consult us for lower voltage/current ripple requirements
(8) Rated power figures are given at 20°C
(9) The maximum output voltage depends on frequency following $V \cdot f < 46000$

Models

GE+ vAC/DC

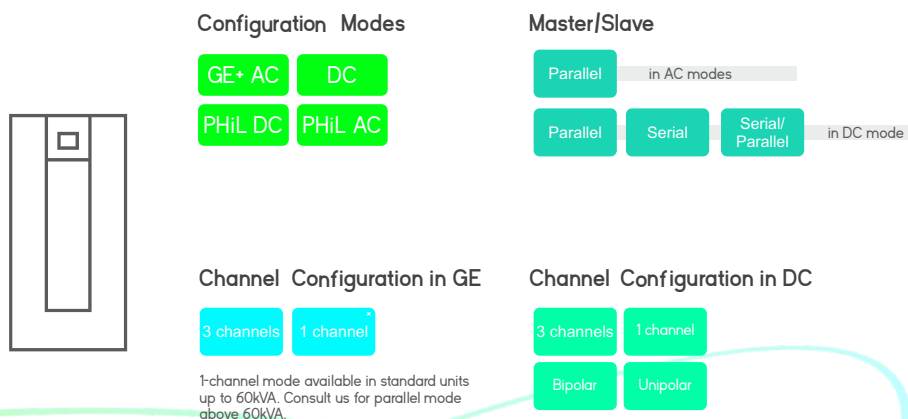
Reference		AC Power Rated ⁽⁹⁾	DC Power Rated ⁽⁹⁾	AC Current Rated ⁽⁹⁾ RMS 3 channels / 1 channel	DC Current Rated ⁽⁹⁾ RMS 3 channels / 1 channel	Weight (kg)	Dimensions DxWxH (mm)
GE+7.5	vAC/DC	7.5kW	7.5kW	11A / 33A	±10A / ±30A	155 kg	770x450x1100 mm
GE+10	vAC/DC	10kW	10kW	15A / 45A	±15A / ±45A	155 kg	770x450x1100 mm
GE+15	vAC/DC	15kW	15kW	22A / 66A	±20A / ±60A	155 kg	770x450x1100 mm
GE+20	vAC/DC	20kW	20kW	29A / 87A	±25A / ±75A	155 kg	770x450x1100 mm
GE+30	vAC/DC	27kW	27kW	40A / 120A	±30A / ±90A	155 kg	770x450x1100 mm
GE+40	vAC/DC	40kW	40kW	58A / 174A	±40A / ±120A	200 kg	770x450x1100 mm
GE+50	vAC/DC	50kW	50kW	73A / 219A	±50A / ±150A	200 kg	770x450x1100 mm
GE+60	vAC/DC	54kW	54kW	80A / 240A	±57A / ±171A	200 kg	770x450x1100 mm
GE+80	vAC/DC	80kW	80kW	116A / -	±105A / ±315A	320 kg	870x590x1320 mm
GE+100	vAC/DC	100kW	100kW	145A / -	±130A / ±390A	320 kg	870x590x1320 mm
GE+120	vAC/DC	108kW	108kW	157A / -	±130A / ±390A	320 kg	870x590x1320 mm
GE+160	vAC/DC	145kW	145kW	211A / -	±155A / ±465A	680 kg	850x900x2000 mm
GE+200	vAC/DC	160kW	160kW	232A / -	±185A / ±555A	680 kg	850x900x2000 mm

All specifications are subject to change without notice.

Galvanic Isolation (optional)

		Circuit Breaker Recommended	Weight (kg)		Circuit Breaker Recommended	Weight (kg)	Dimensions DxWxH (mm)
INSIDE THE CABINET	IT 7.5i	Type C - 25A	145 kg	IN EXTERNAL CABINET IP20	IT 30e	Type D - 80A	595x415x708 mm
	IT 10i	Type C - 25A	145 kg		IT 40e	Type D - 100A	710x525x775 mm
	IT 15i	Type C - 32A	145 kg		IT 50e	Type D - 125A	710x525x775 mm
	IT 20i	Type C - 40A	145 kg		IT 60e	Type D - 160A	875x600x900 mm
	IT 30i	Type C - 50A	195 kg		IT 80e	Type D - 200A	875x600x900 mm
	* IT 40i	Type C - 63A	195 kg		IT 100e	Type D - 250A	875x600x900 mm
	* IT 50i	Type C - 83A	195 kg		IT 120e	Type D - 315A	875x600x900 mm
					IT 160e	Type D - 400A	964x684x1252 mm
					IT 200e	Type D - 500A	1210x750x1430 mm

* In the IT 40i and IT 50i models the size of the cabinet increases to a total of 770x835x1100mm. The others keep the original size.



CINERGIA, Regenerative Power Electronics Solutions

- Grid Emulators AC, DC, AC/DC
- Electronic Loads, AC, DC, AC/DC, HF (360-900Hz)
- Bidireccional DC, Battery Emulators, PV Panel Emulators

Can Baletes, 7 Nau A (Poligon el Cros)
08310, Argentona, BARCELONA
cinergia.coop
cinergia@cinergia.coop