

PARAT HALVORSEN AS

COMPACT BOILER

A **Plug and Play**-Solution from PARAT





All in One Skid

Compact, Efficient, and Easy to Install

The new 8 (16) MW Skid-Mounted Electrode Boiler is a compact and fully integrated hot water solution, designed for efficient and reliable heating.

Delivered as a plug-and-play unit, the entire system comes pre-assembled on a single skid, minimizing installation time and engineering requirements.

This innovative hot water boiler is designed to reduce space requirements and simplify integration, making it the ideal choice for industrial and district heating applications.

PARAT uses a high-ohmic insulated zero point, so no transformer is needed.





Why Choose the IEH Compact?

Reliable & Low Maintenance

The new electrode shape design ensures optimized electrical performance while allowing electrodes to be replaced without entering the boiler, making maintenance quick and hassle-free.

Plug-and-Play Operation

As a standardized solution, the boiler is ready for fast delivery. The pre-assembled skid includes all essential components, allowing for quick installation and immediate operation.

Space-saving & Easy to Install

The small footprint and lightweight design make it easier to fit into existing facilities. Everything is delivered as a single skid unit, reducing installation time and costs.

Optimized for Your Needs

The system is designed with scalability in mind—the capacity might be increased after initial test runs to meet specific customer requirements.

Technical Overview

Fully Integrated Skid System Includes:

Water treatment unit
Feed water treatment system
Blow-down cooling system
Boiler circulation system
Heat exchanger
Design in accordance with PED
CE Approved

Technical Specifications

Type: Hot Water Boiler
Output Range: 50 kW–8 MW*
Boiler Design Pressure: 12 barg
Max Design Pressure: 16 barg
District Heating Temperature: Up to 140°C
Medium voltage connection: ≤ 12 kV

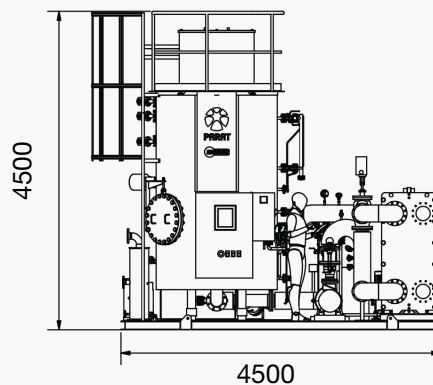
*Extended configurations up to 16 MW available on request

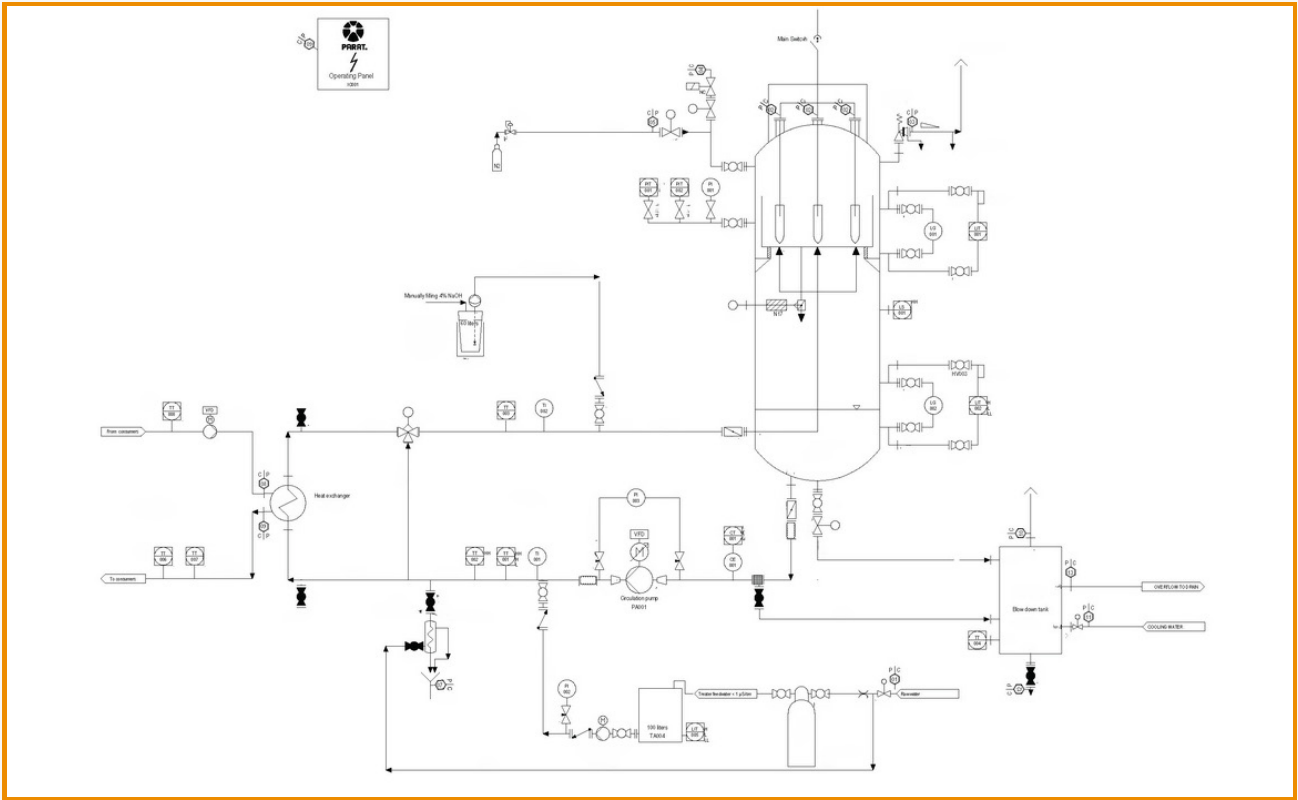
Simple Connection & Integration

Direct district heating integration
Drain, potable water, and pressure
Safety valve (PSV) connections
Instrument air for actuators

Measurements

Height: 4500 mm
Length: 4500 mm
Width: 2490 mm
Operating Weight: Approx. 8 tons
Test Weight: Approx. 10,5 tons





Trusted by companies all over the world.



Take a look at our references at parat.no



PARAT®

Our mission:

“To enable the global industry to utilize sustainable energy accelerating every sector’s capability to reach net zero emissions.”



ZERO EMISSION HEATING

POWERING THE INDUSTRY OF TOMORROW

Parat Halvorsen AS
P.O. Box 173
NO-4402
Flekkefjord
Norway

Tel +47 99 48 55 00
sales@parat.no
www.parat.no

