



17th EXCELLENCE IN PEDIATRICS CONFERENCE

EiP2025

PARIS, 4-6 DECEMBER 2025



CONFERENCE PROGRAM



OPENING SESSION (PLE1)

**Sir Terence Stephenson**

UCL GOS Institute of Child Health (UK)

**Laura Reali**President, European Confederation
of Primary Care Pediatricians**Alison Johns**Chair of the Board of Trustees, Academy of Royal Medical Colleges,
Global Ambassador, Advance HE

09:00 - 11:00

MIRO I+II

**Leadership and Ethics
in Modern Healthcare**

This lecture explores the vital role of ethical leadership in shaping patient outcomes, upholding professional integrity, and building institutional trust. It examines key regulatory challenges, including governance gaps, patient safety concerns, and evolving accountability standards. Attendees will gain practical strategies for effective leadership across multidisciplinary teams, equipping them to navigate complex healthcare environments and drive ethical, high-quality care.

**The Exposome and the First 1000
Days: Shaping Lifelong Health from
Conception**

This lecture explores how health and developmental trajectories in the critical first 1000 days of life profoundly influence lifelong health. Focusing on the exposome—the cumulative effect of environmental exposures—the talk will highlight why early, strategic interventions are essential. Attendees will gain insight into how factors like particulate matter exposure in early life are linked to conditions such as asthma, and look at innovative approaches to safeguard health for future generations.

**Leading the Future of Pediatric Care:
Developing Clinician Leadership, Care,
and Well-being**

This lecture examines how emerging models of clinical leadership can strengthen Pediatric care while supporting the well-being of the workforce. As healthcare systems adapt to increasing pressures, embedding leadership skills into everyday practice is essential for sustaining high-quality, compassionate care. The session will explore current evidence, practical strategies for enhancing clinician well-being, and evolving leadership roles within multidisciplinary teams to ensure a resilient and future-ready Pediatric workforce.

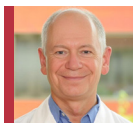
Keynote Plenary
Lectures

11:00 - 11:30

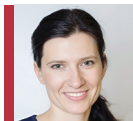
Coffee Break

DERMATOLOGY (DER1) 11:30 - 13:30 **MIRO II**

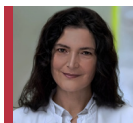
Moderators: Barbara Kunz & Dirk Van Gysel

**Jan Izakovic**Basel University
Children's Hospital (CH)**Latest Advances in Pediatric Dermatology: Infections and Infestations**

This presentation reviews the latest updates in managing pediatric skin infections and infestations. Topics include evolving pathogens, antimicrobial resistance, and practical diagnostic techniques. Through real-world examples, participants will enhance their ability to recognize and treat common and emerging bacterial, viral, fungal, and parasitic conditions affecting children's skin in both outpatient and hospital settings.

**Karolina Vorcakova**Jessenius Faculty of
Medicine in Martin,
Slovakia (SK)**Latest Advances in Pediatric Dermatology: Chronic Inflammatory Disorders**

Gain a comprehensive update on chronic inflammatory skin disorders in children. The presentation explores advances in understanding disease mechanisms, new treatment options, and patient-centered care strategies. Designed for clinicians, this update helps optimize long-term management and improve outcomes for children with persistent or relapsing inflammatory skin conditions.

**Barbara Kunz**

Dermatologikum Hamburg (DE)

**Dirk van Gysel**

O.L.Vrouw Hospital Aalst (BE)

Diagnostic Dilemmas: Challenging Pediatric Dermatology Cases

This interactive session presents challenging pediatric dermatology cases that require careful clinical reasoning and multidisciplinary insight. Participants will explore rare diagnoses, unusual presentations, and treatment-resistant conditions. Case-based discussions will highlight diagnostic pitfalls and emerging therapies, providing valuable tools and takeaways for clinicians managing complex or uncertain dermatologic conditions in everyday pediatric practice.

Lectures & interactive discussion

INFECTIOUS DISEASES (INF1) 11:30 - 13:30 **MIRO I**

Moderator: Sir Terence Stephenson

**Elizabeth Whittaker**Imperial College
London (UK)**Infectious Diseases 2025 Review: Practical Insights for Pediatricians**

This presentation highlights the most important research and clinical advances in pediatric infectious diseases in 2025. Attendees will learn to apply the latest evidence-based guidelines to improve diagnosis, treatment, and prevention strategies in daily practice. The session will also address emerging infectious threats and trends, equipping clinicians with proactive approaches to future challenges in pediatric care.

**Aubrey Cunnington**Imperial College
London (UK)**New Approaches To Diagnosis For Infectious Diseases In Children**

This presentation examines the evolving landscape of infectious disease diagnostics in pediatrics. It highlights the limitations of traditional diagnostic methods and explores the strengths and constraints of modern molecular techniques. Attendees will also gain awareness of emerging diagnostics based on host response biomarkers, offering new possibilities for more accurate and timely detection of infectious conditions in children.

**Elena Chiappini**Meyer Children's
University Hospital,
Florence (IT)**The Multifaceted Aspects of Streptococcus pyogenes Infection in Children**

This presentation examines the management of Streptococcus pyogenes infections in children, highlighting differences between localized and invasive disease forms. Attendees will review current diagnostic criteria and evidence-based antibiotic guidelines for common presentations, while also learning to recognize early warning signs of invasive Group A Streptococcus (GAS) infection. The session will emphasize practical approaches to timely intervention and referral, equipping clinicians with the knowledge to improve patient outcomes and reduce complications from severe GAS disease.

Lectures & interactive discussion

ORAL PRESENTATIONS (01L-OP-D1B) 11:30 - 13:30 **MIRO III**

Moderator: Colin Michie

ID:101	ID:135	ID:253
ID:107	ID:138	ID:259
ID:120	ID:140	ID:261
ID:121	ID:145	ID:330

View presentations & presenters: Page 11

View the abstracts:

<https://bit.ly/01L-OP-D1B>**VIRTUAL ORAL PRESENTATIONS (02V-OP-D1B)**

ID:125	ID:204	ID:317
ID:149	ID:212	ID:327
ID:152	ID:216	ID:328
ID:184	ID:237	ID:340
ID:199	ID:241	ID:347
ID:200	ID:291	ID:350
ID:201	ID:306	ID:333

View presentations & presenters: Page 11

View the abstracts:

<https://bit.ly/02V-OP-D1B>

INFECTIOUS DISEASES (INF2)

14:30 - 16:30

MIRO II

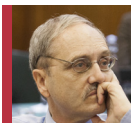
Moderator: Susanna Esposito

Susanna Esposito

World Association for Infectious Diseases and Immunological Disorders I WAIDid

Challenges and Limitations of Current RSV Prevention Strategies in Infants and Young Children - What Next?

This presentation reviews the historical context and persistent challenges of RSV prevention, analyzing how recent breakthroughs have reshaped our understanding. It will introduce and analyze the latest advancements in preventive strategies, particularly the use of monoclonal antibodies. We will also examine the remaining gaps in protection, focusing on the vulnerable population of older infants, and explore the future of RSV prevention, including next-generation vaccines and universal implementation strategies aimed at achieving comprehensive coverage for all at-risk groups.



George Syrogiannopoulos

University of Thessaly (GR)

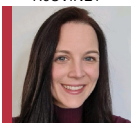
RSV and Pneumococcus: Understanding the Viral-Bacterial Synergy in Pediatric Respiratory Disease

This presentation explores the evidence on how Respiratory Syncytial Virus (RSV) infection increases the risk of secondary pneumococcal disease in infants and young children. With new RSV immunization strategies in place, understanding the interaction between these pathogens is essential for clinical decision-making. The session will examine biological mechanisms, clinical implications, and future directions for integrated prevention strategies.



Lies Kriek

ReSVINET



Rachael Thomas

ReSVINET

Beyond the Numbers: The Human Story of RSV – Perspectives from Patients and Families

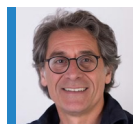
This session examines the multifaceted burden of severe RSV from the perspective of patients and caregivers—including emotional distress, socioeconomic challenges, and care coordination gaps. By analyzing real-world experiences, we will explore how integrating family insights into clinical pathways and public health strategies can improve outcomes, equity, and system responsiveness.

Lectures & interactive discussion

GASTROENTEROLOGY (GAS1)

14:30 - 16:30

MIRO I

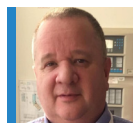
Moderator: Marc Benninga

Marc Benninga

University of Amsterdam (NL)

Pharmacological Treatment for Children with Constipation: Present and Future

This presentation offers an in-depth overview of functional constipation in children, focusing on diagnosis using the Rome criteria and the importance of non-invasive assessment. It explores comprehensive management strategies, including the integration of laxatives with lifestyle modifications, bowel diaries, and toilet training. Attendees will also examine emerging therapies, current research gaps, and future directions for improving long-term outcomes.



Mark Beattie

University of Southampton (UK)

Advances in the Diagnosis and Management of Pediatric IBD (Crohn's and Ulcerative Colitis)

This presentation highlights recent advances in the diagnosis and management of pediatric inflammatory bowel disease (IBD). Attendees will explore the use of non-invasive biomarkers and imaging tools for early detection and monitoring, review evidence supporting earlier use of biologics and personalized treatment approaches, and examine emerging research on the gut microbiome and dietary interventions such as the Crohn's Disease Exclusion Diet.



Arine Vlieger

St. Antonius Hospital Nieuwegein (NL)

The Microbiome and Functional GI Disorders

This presentation reviews emerging evidence linking gut dysbiosis to functional gastrointestinal disorders (FGIDs) in children, such as IBS and functional abdominal pain. Attendees will explore updated data on strain-specific probiotics and the Low FODMAP diet for symptom relief and microbiome modulation. The session also examines how gut microbiota influences the gut-brain axis, affecting mood, pain, and stress responses.

Lectures & interactive discussion

OTOLARYNGOLOGY (ENT1)

14:30 - 16:30

MIRO III

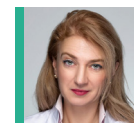
Moderator: Mehmet Umut Akyol

Mehmet Umut Akyol

Hacettepe University (TR)

Advances in the Management of Otitis Media and Hearing Loss

This presentation highlights recent advances in diagnosing and managing otitis media in children. Attendees will explore new tools for distinguishing acute otitis media from otitis media with effusion and identifying children at higher risk for recurrence. The session also covers updated antibiotic guidelines, emerging non-antibiotic therapies, and advances in hearing screening and support technologies.



Dilyana Vicheva

Medical University - Plovdiv (BG)

Chronic Rhinosinusitis (CRS) and Nasal Inflammation in Children

This presentation provides an up-to-date overview of pediatric chronic rhinosinusitis (CRS), focusing on advances in diagnosis and classification through endotyping to better understand underlying inflammatory patterns. Attendees will explore new evidence for non-invasive therapies, including nasal corticosteroids, irrigation techniques, and emerging biologics. The session also clarifies referral criteria and the evolving role of surgery and multispecialty management in complex cases.



Omer Faruk Unal

American Hospital - Koç University (TR)

Pediatric Voice, Swallowing, and Speech Disorders

This presentation highlights new research and clinical advances in the early detection and management of pediatric voice, speech, and swallowing disorders. Attendees will explore validated tools and protocols for identifying issues in high-risk groups, including NICU graduates and children with neurological or syndromic conditions. The session also covers updated approaches to diagnosing voice disorders and evidence-based strategies for multidisciplinary dysphagia care.

Lectures & interactive discussion

16:30 - 17:00

Coffee Break

ENDOCRINOLOGY (END1)

17:00 - 19:00

MIRO II

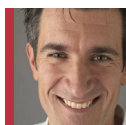
Moderator: Christiaan de Bruin

**Christiaan de Bruin**Leiden University
Medical Center (NL)**Growth Disorders and New Therapeutic Options**

This presentation provides a comprehensive update on the early detection, diagnosis, and treatment of pediatric growth disorders. Attendees will explore new screening strategies and diagnostic algorithms, including the role of genetic testing in conditions like GH deficiency, Turner syndrome, and ISS. The session also reviews emerging therapies—such as long-acting GH and non-GH-based treatments—now entering clinical use in pediatric care.

**Daniel Klink**ZAS Queen Paola
Children's Hospital
Antwerp (BE)**Early Puberty, Delayed Puberty, and Gender-Affirming Care**

This presentation explores evolving trends in the timing of puberty, examining how environmental, nutritional, and psychosocial factors contribute to both early and delayed onset. Attendees will review evidence-based approaches to diagnosis and treatment, including the use of GnRH analogs and hormone therapy. The session also offers guidance on gender-affirming care and integrating psychosocial support with medical management.

**Edgar Van Mil**Jeroen Bosch Hospital
& Maastricht University
(NL)**Pediatric Obesity and Metabolic Syndrome – What's New and Clinically Relevant**

This presentation explores the evolving management of pediatric obesity, highlighting growing evidence and guideline-supported use of GLP-1 receptor agonists in adolescents with moderate to severe obesity. Attendees will examine the shift toward personalized, multidisciplinary care integrating behavioral, nutritional, and pharmacologic interventions. The session also presents updated screening recommendations to support early detection of metabolic risk.

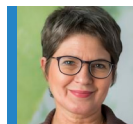
Lectures & interactive discussion

INFECTIOUS DISEASES (INF3)

17:00 - 19:00

MIRO I

Moderator: Lieke Sanders

**Lieke Sanders**National Institute for
Public Health and the
Environment - RIVM
(NL)**Practical Insights from the Latest Serosurveillance Study in the Netherlands**

This presentation explores the design and findings of the latest serosurveillance study conducted in the Netherlands, highlighting its value in guiding infectious disease control. Attendees will examine how seroprevalence data shapes public health strategies and vaccination policies, and gain practical insights on how similar approaches can be applied to strengthen disease monitoring and response in other health systems.

**Roy K. Philip**University Hospital
Limerick & University
Maternity Hospital
Limerick (IE)**The Impact of the RSV Preventive Strategies on Infant Hospitalizations: an Irish and Global View**

This presentation examines the real-world impact of recently introduced RSV preventive strategies on infant hospitalizations rates. Drawing on data from Ireland and comparative insights from international experience, the session will assess the effectiveness of maternal vaccination and infant immunization in reducing severe RSV burden. It will also highlight lessons for health systems, equity in access, and implications for future respiratory disease prevention policies.

**Colin Michie**UCL GOS Institute of
Child Health (UK)**Artificial Intelligence and Infectious Diseases: Opportunities, Challenges, and Future Directions**

This presentation reviews current evidence and expert perspectives on the applications of artificial intelligence in infectious diseases. It highlights opportunities in diagnostics, surveillance, and clinical decision-making, while addressing barriers to implementation, ethical considerations, and equity challenges. The session provides a broad overview of key insights and future directions for integrating AI into infectious disease prevention and care.

Lectures & interactive discussion

ORAL PRESENTATIONS (03L-OP-D1D)

17:00 - 19:00

MIRO III

Moderator: Aubrey Cunningham

ID:146	ID:178	ID:255
ID:148	ID:210	ID:338
ID:155	ID:211	ID:343
ID:158	ID:220	
ID:174	ID:247	

View presentations & presenters: Page 11

View the abstracts:

<https://bit.ly/03L-OP-D1D>**VIRTUAL POSTER PRESENTATIONS (04V-PT-D1D)**

ID:106	ID:224	ID:284
ID:110	ID:225	ID:288
ID:114	ID:242	ID:296
ID:117	ID:243	ID:309
ID:161	ID:244	ID:322
ID:182	ID:249	ID:331
ID:198	ID:275	ID:332
ID:219	ID:278	ID:254
ID:223	ID:282	

View presentations & presenters: Page 12

View the abstracts:

<https://bit.ly/04V-PT-D1D>

NEONATOLOGY (NE01)

09:00 - 11:00

MIRO II

Moderators: Roland Hentschel & Torsten Uhlig

**Roland Hentschel**

University Hospital Freiburg (DE)

**Torsten Uhlig**

Klinikum Rosenheim (DE)

Hot Topics in Neonatology: Recent Achievements in Diagnostics and Therapy

This presentation reviews best practices in six key areas of neonatal care: antibiotic use, C-reactive protein, blood transfusion, RSV immunization, seizure management, and AI applications. Attendees will examine findings from recent clinical trials, including safety and outcome data, and explore the latest evidence from scientific literature to inform and improve everyday neonatal clinical decision-making.

**Andrei Morgan**

Center for Epidemiology and Statistics Research Paris Cité (CRESS) (FR)

Impact Of Country Of Origin On The Outcome Of Early Preterm Infants

This presentation explores how an infant's country of origin can influence outcomes following early preterm birth, drawing on international perinatal data and comparative epidemiology. It will examine the interplay of healthcare systems, socioeconomic context, and maternal migration on survival, morbidity, and access to care—highlighting implications for improving equity in neonatal outcomes across diverse populations.

Lectures & interactive discussion

NUTRITION (NUT1)

09:00 - 11:00

MIRO I

Moderator: Koen Joosten

**Ed Gaynor**

Great Ormond Street Hospital (UK)

Update on Allergies and Eosinophilic GI Conditions

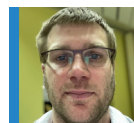
This presentation highlights updated clinical guidelines and the rising recognition and diagnosis of conditions like Eosinophilic Esophagitis (EoE) and FPIES. It reviews recent advances in treatment, including biologics for EoE, dietary strategies, and topical steroids. Attendees will also examine the latest evidence supporting early, diverse allergen introduction as a preventive measure for IgE and non-IgE-mediated conditions.

**Koen Joosten**

Sophia Children's Hospital (NL)

Disease-Associated Malnutrition in Pediatrics: Rethinking Assessment and Treatment

This presentation examines recent advances in identifying malnutrition and sarcopenia in hospitalized and chronically ill children, using integrated tools like anthropometrics, physical exams, and functional markers. It explores how nutritional assessments guide support strategies and post-discharge goals. Attendees will also review evidence on intermittent vs. continuous feeding, blended diets, and practical approaches to improve enteral nutrition outcomes.

**Koen Huysentruyt**

Universitair Ziekenhuis Brussel (BE)

The Role Of Specific Nutrients In Cognitive Trajectories

This presentation evaluates clinical evidence linking key nutrients—LCPUFAs, iron, choline, and vitamin D—to neurodevelopmental processes like synaptogenesis and myelination. It analyzes how these nutrients influence long-term cognitive function across the lifespan and examines their effects on memory, attention, and executive function, drawing on emerging research findings and recent clinical studies to support evidence-based nutritional strategies.

Lectures & interactive discussion

ORAL PRESENTATIONS (05L-OP-D2A)

09:00 - 11:00

MIRO III

Moderator: Neki Sargant

ID:167

ID:231

ID:260

ID:189

ID:233

ID:268

ID:190

ID:239

ID:316

ID:217

ID:258

ID:341

View presentations & presenters: Page 13

View the abstracts:

<https://bit.ly/05L-OP-D2A>

11:00 - 11:30

Coffee Break

EMERGENCY PEDIATRICS (EME1)

11:30 - 13:30

MIRO II

Moderator: Damian Roland



Damian Roland

University of Leicester
(UK)

The Devil Is In The Detail - Why Applying Guidelines Is Hard

This presentation examines how clinical evidence is translated into practice, with a focus on the challenges of guideline implementation in children's emergency care. Attendees will explore models of evidence uptake, analyze real-world case studies highlighting barriers to adherence, and gain practical strategies to improve the integration of clinical guidance into frontline pediatric emergency settings.



Lea Lengart

Hôpital Robert Debré
(FR)

Trends In Emergency Department Presentations Since COVID

This presentation introduces the EPISODES study, exploring its origins and development in the context of post-pandemic pediatric care. Attendees will gain insight into the evolving theory of 'immune debt' and how it relates to patterns of Emergency Department presentations since COVID-19. The session will also examine recent European trends and their implications for future policy and research.



Caroline Ponmani

BHR University NHS
Trust (UK)

The Children Who Define Us

This presentation reflects on the unique challenges and rewards of pediatric practice, focusing on the identifying seriously ill children among many with mild illness. Through powerful clinical stories, attendees will be reminded of the value of careful observation and examination—and of the joy, wonder, and inspiration that define a pediatrician's everyday encounters with children.

Lectures & interactive discussion

PULMONOLOGY WORKSHOP (PUL1)

11:30 - 13:30

MIRO I

Moderator: Adnan Custovic



Erik Melen

Karolinska (SE)

Asthma Inception And Trajectory Throughout the Lifecourse

This presentation explores the complex landscape of pediatric asthma, focusing on its diverse clinical phenotypes and underlying endotypes shaped by genetic, environmental, and immunological factors. Attendees will learn how personalized, biomarker-guided treatment strategies—including biologics and targeted therapies—can improve outcomes. The session also covers adaptive follow-up and monitoring approaches to optimize control and reduce long-term respiratory risks.



Nikos Papadopoulos

University of Athens
(GR)

Monitoring Asthma In Children

This presentation focuses on evidence-based strategies for monitoring pediatric asthma to ensure effective, individualized care. Attendees will learn how to assess symptoms, lung function, treatment adherence, and biomarkers, and how to apply validated tools and digital health solutions to detect early deterioration. The session also highlights how tailored, ongoing monitoring can optimize outcomes and reduce exacerbation risks.



Adnan Custovic

Imperial College
London (UK)

Childhood Lung Function Trajectories: Implementation At Clinical And Population Level

This presentation examines how early-life lung development shapes long-term respiratory health and highlights the importance of monitoring lung function trajectories to identify at-risk children. Attendees will learn to apply standardized tools like GLI reference equations in clinical practice and explore how integrating spirometry trends into care can support personalized interventions and inform broader respiratory health policies across the lifecourse.

Lectures & interactive discussion

ORAL PRESENTATIONS (06L-OP-D2B)

11:30 - 13:30

MIRO III

Moderator: Olatokunbo Sanwo

ID:111

ID:298

ID:319

ID:112

ID:305

ID:323

ID:202

ID:312

ID:336

ID:205

ID:313

ID:266

ID:318

View presentations & presenters: Page 13

View the abstracts:

<https://bit.ly/06L-OP-D2B>

13:30 - 14:30

Lunch Break

NEONATOLOGY (NE02)

14:30 - 16:30

MIRO II

Moderator: Damian Roland

**Heike Rabe**Brighton and Sussex
Medical School (UK)**Optimal Cord Management in Global Health Settings**

This presentation examines the potential benefits of optimal cord management for both preterm and term infants, emphasising how the timing of cord clamping can influence neonatal outcomes across care settings. Attendees will review and clarify common misconceptions and perceived barriers to adoption. The session also outlines practical strategies for implementing cord management practices, including resource-limited or high-demand environments.

**Olivier Danhaive**Saint-Luc University
Clinics (BE)**What is New in Bronchopulmonary Dysplasia (BPD) therapy?**

This presentation provides an in-depth update on bronchopulmonary dysplasia (BPD), tracing its evolving definitions from phenotypes to endotypes and examining emerging biomarkers that aid diagnosis and risk stratification. Attendees will explore novel therapeutic approaches, including cell-based therapies, and learn about the multidisciplinary care required to manage severe BPD and its comorbidities, while considering its long-term impact across the lifespan.

**Karel Allegaert**KU Leuven (BE)
& Erasmus MC
Rotterdam (NL)**What a Pediatrician Should Know About Infant Pharmacology!**

This presentation explores the unique aspects of pharmacotherapy in infancy, focusing on developmental pharmacokinetics and pharmacodynamics during this critical period. Attendees will gain insight into how infant (patho) physiology affects drug absorption, distribution, metabolism, and response. The session also highlights the complexity of drug development in this population and the need for age-specific research to ensure safe and effective treatments.

Lectures & interactive discussion

DERMATOLOGY (DER2)

14:30 - 16:30

MIRO I

**Barbara Kunz**Dermatologikum
Hamburg (DE)**Jan Izakovic**Basel University Children's
Hospital (CH)**Dirk van Gysel**O.L.Vrouw Hospital
Aalst (BE)**Karolina Vorcakova**Jessenius Faculty of Medicine in Martin,
Slovakia (SK)**A Practical Approach and First-Line Treatment of Common Dermatoses in Childhood**

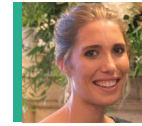
This interactive workshop provides a practical framework for recognising and managing common skin conditions in children. Participants will learn how to identify typical clinical features, choose appropriate first-line treatments, and offer clear guidance to families. Emphasis is placed on real-world strategies that can be applied in primary and specialist care to improve patient outcomes.

Interactive Workshop

NUTRITION/ALLERGIES (NUT2)

14:30 - 16:30

MIRO III

**Leanne Goh**Great Ormond Street
Hospital (UK)**Ed Gaynor**Great Ormond Street
Hospital (UK)**Eleanor Wells**Great Ormond Street
Hospital (UK)**Lucy Jackman**Great Ormond Street
Hospital (UK)**Karen Aris**Great Ormond Street
Hospital (UK)**Practical Management of Food Allergies in Children**

This hands-on workshop focuses on the real-world management of food allergies in pediatric practice. Attendees will learn to recognize common presentations, navigate diagnostic challenges, and implement evidence-based prevention, treatment, and emergency preparedness strategies. The session empowers clinicians to provide safe, confident, and family-centered allergy care across all settings through case discussions and practical tools.

Interactive Workshop

16:30 - 17:00

Coffee Break

EMERGENCY PEDIATRICS WORKSHOP (EME2) 17:00 - 19:00 **MIRO II****Damian Roland**

University of Leicester (UK)

**Owen Hibberd**Cambridge University
Hospitals NHS Foundation
Trust (UK)**Rachael Mitchell**King's College Hospital,
London (UK)**Practical Update on Pediatric Emergency Medicine (PEM)**

This interactive and fast-paced workshop is designed to challenge and refresh your knowledge in Pediatric Emergency Medicine (PEM) through case-based learning and rapid-fire questions. With a light-hearted yet informative approach, the session reviews high-yield clinical scenarios, highlights common diagnostic pitfalls, and updates participants on the latest evidence-based strategies for managing frequent pediatric emergencies in everyday practice.

Interactive Workshop

GENETICS WORKSHOP (GEN1) 17:00 - 19:00 **MIRO I**

Moderators: Paul Gissen & Christina Lampe

**Paul Gissen**Great Ormond Street
Hospital (UK)**Megan Keating**Great Ormond Street
Hospital (UK)**Rebecca Whiteley**Great Ormond Street
Hospital (UK)**Childhood Dementias: Early Recognition, Collaboration, and Emerging Therapies**

This interactive workshop explores the causes, clinical features and the latest therapeutic advances in childhood dementia. Through collaborative case studies, participants will learn to recognize early signs and understand the crucial role of local pediatricians in managing complex cases in partnership with specialized centers. The session also provides updates on prevalence, diagnostic approaches, and ongoing clinical trials shaping future care.

**Christina Lampe**University Hospital
of Giessen (DE)**Inherited Metabolic Disorders: The Role Of Multidisciplinary Teams In Patient And Family Support**

This presentation highlights the importance of coordinated, multidisciplinary care in managing inherited metabolic disorders. Attendees will explore the collaborative roles of healthcare professionals across specialties, strategies for supporting the emotional and practical needs of patients and families, and best practices for long-term monitoring and successful transition of care from pediatric to adult health services.

Lectures & interactive discussion

POSTER PRESENTATIONS (07L-PT-D2D) 17:00 - 19:00 **MIRO III**

Moderator: Leanne Goh

ID:109	ID:151	ID:281
ID:113	ID:160	ID:292
ID:115	ID:163	ID:301
ID:116	ID:176	ID:307
ID:122	ID:186	ID:310
ID:126	ID:207	ID:321
ID:129	ID:234	ID:334
ID:142	ID:236	ID:346
ID:143	ID:264	
ID:147	ID:280	

View presentations & presenters: Page 13

View the abstracts: <https://bit.ly/07L-PT-D2D>**VIRTUAL ORAL PRESENTATIONS (08V-OP-D2D)**

ID:238	ID:263	ID:289
ID:251	ID:267	ID:303
ID:235	ID:269	ID:304
ID:240	ID:270	ID:344
ID:250	ID:271	ID:349
ID:252	ID:273	ID:213
ID:256	ID:274	

View presentations & presenters: Page 14

View the abstracts: <https://bit.ly/08V-OP-D2D>

ONCOLOGY (ONC1)

09:00 - 11:00

MIRO II

Moderator: Hamish Wallace



Angela Jesudason

Royal Hospital
for Sick Children,
Edinburgh (UK)

Solid Tumours - What the General Pediatrician Needs to Know

This presentation equips general pediatricians to recognize early warning signs of solid tumors in children, including subtle, non-specific symptoms that may be easily overlooked. It highlights key red flags in history and examination, outlines appropriate initial investigations, and emphasizes when to refer. The session aims to improve early detection and timely diagnosis to support better outcomes.



Darren Hargrave

Great Ormond Street
Hospital (UK)

Pediatric Brain Tumours- Biological Driven Therapies

This presentation examines the key biological features of common pediatric brain tumors currently targeted by specific therapies. It explores examples of biologically driven treatments, detailing their mechanisms of action and clinical benefits. Attendees will also discuss ongoing challenges and future directions in the development and application of these therapies to improve outcomes in pediatric neuro-oncology.



Ajay Vora

Sheffield University and
Great Ormond Street
Hospital (UK)

Early Signs And Diagnostic Clues – Leukaemia And Lymphoma

This presentation helps clinicians recognize early signs and symptoms that may indicate leukemia or lymphoma in children and adolescents. It outlines key diagnostic clues from initial assessments, including blood tests and physical exams, that warrant further investigation. Attendees will also learn to distinguish between early features of leukemia and lymphoma, while understanding areas of clinical overlap.

Lectures & interactive discussion

MENTAL HEALTH (CMH1)

09:00 - 11:00

MIRO I

Moderator: Lee Hudson



Lee Hudson

UCL Institute of Child
Health and Great
Ormond Street Hospital
(UK)

An Overview Of Mental Health In Pediatrics - Evidence, Impact, And Making The Case For Support

This presentation examines the integration of mental health within pediatric care, with a focus on identifying high-risk populations and understanding the influence of mental health on clinical presentations. It discusses diagnostic and therapeutic challenges and proposes evidence-based strategies to strengthen advocacy and investment among clinicians, policymakers, and healthcare administrators.

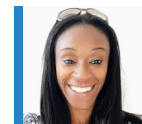


Sarah Fuller

Northampton NHS
Trust (UK)

“Can’t Eat, Won’t Eat”. Managing Mental Health Related Nutritional Issues And Crises In The Inpatient And Outpatient Settings For Pediatricians

This presentation examines nutritional risks of restricted eating in children with mental health challenges. It offers practical adjustments to support neurodiverse children, and reviews least restrictive approaches to nasogastric feeding under restraint, ensuring safe, ethical, patient-centered pediatric care.

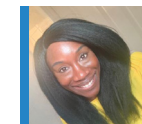


Neky Sargant

Bristol Royal Hospital
for Children (UK)

Mental health resuscitation: A holistic approach to assessing and managing acute mental health presentations to acute pediatric care settings

This presentation prepares clinicians to assess common mental health presentations in acute settings, recognize red flags for serious concerns, and understand moral distress and injury in complex cases, offering practical strategies to mitigate and address these challenges.



Olatokunbo Sanwo

Cambridge
Community NHS
Trust (UK)

“Some Things Are Normal”. Neurodevelopmental Disorders And Anxiety In General And Community Pediatrics

This presentation helps clinicians recognize neurodevelopmental features in general and community pediatrics, distinguish typical patterns from co-occurring mental health disorders, and apply practical strategies to manage challenges effectively, improving care delivery and outcomes in pediatric settings.

Lectures & interactive discussion

POSTER PRESENTATIONS (09L-PT-D3A)

09:00 - 11:00

MIRO III

Moderator: Ed Gaynor

ID:164	ID:196	ID:272
ID:179	ID:206	ID:277
ID:181	ID:208	ID:300
ID:183	ID:222	ID:308
ID:185	ID:228	ID:311
ID:187	ID:232	ID:320
ID:193	ID:257	ID:339
ID:194	ID:262	ID:345
ID:195	ID:265	

View the presentations & presenters: Page 15

View the abstracts: <https://bit.ly/09LPTd3A>**CLOSING PLENARY (PLE2)**

11:00-12:00

MIRO II



Colin Michie

UCL GOS Institute of
Child Health (UK)

Revolutionizing Pediatric Care: Inspiring Change and Shaping the Future of Child Health

This presentation explores innovative models reshaping pediatric healthcare delivery, focusing on improving outcomes and access. Attendees will examine how leadership, advocacy, and effective multidisciplinary collaboration drive meaningful change across systems. The session also looks ahead to future trends and emerging technologies that redefine how we support the health and well-being of children worldwide.

ORAL PRESENTATIONS (01L-OP-d1B)

Thursday 4 December 11:30 - 13:30 **MIRO III**

- ID:101 > **Patel, Jaina**
A CASE OF TORTICOLLIS WITH CAVERNOMAS
- ID:107 > **Okah, Agatha Godwin**
WHAT DISEASES COME WITH THE BAGGAGE?; SCREENING UNACCOMPANIED ASYLUM SEEKING CHILDREN AND YOUNG PERSONS (UASCYP) IN WARWICKSHIRE
- ID:120 > **Atmalia, Khafifah Puja**
THE INFLUENCE OF FTO AND LEP GENE VARIANTS ON OBESITY STATUS IN CHILDREN: A SYSTEMATIC REVIEW
- ID:121 > **Seanor, Stefanie**
PEDIATRIC OCCUPATIONAL THERAPISTS' KNOWLEDGE AND USE OF MENTAL HEALTH ASSESSMENTS WITHIN LEARNING ENVIRONMENTS AND CONTEXTS
- ID:135 > **Kausar, Safiyyah**
CONCURRENT INGUINAL HERNIA AND URETEROCELE IN A 4-YEAR-OLD MALE WITH MULTICYSTIC DYSPLASTIC KIDNEY DISEASE
- ID:138 > **Koettnitz, Caroline**
HUMAN MILK – ESSENTIAL FOR VULNERABLE INFANTS – COMMERCIALISATION ONLY WITH CLEAR ETHICAL PRINCIPLES ENSURES QUALITY AND ACCESS
- ID:140 > **Youssef, Marvey**
HOW AGE AND ETHNICITY SHAPE FOLATE CONCENTRATIONS IN CHILDREN
- ID:145 > **AlYafei, Rashid Adel A AlSaadi**
BEYOND THE GENE: STT3B HOMOZYGOSITY UNVEILS THE A.G.E. TRIAD (AUTISM, GLOBAL DELAY, EDUCATIONAL AVOIDANCE) IN NEURODEVELOPMENTAL COMPLEXITY
- ID:253 > **Comley, Vanessa**
ASSESSING GLYCAEMIC METRICS PRE AND POST TRANSITIONING TO AN ADVANCED HYBRID CLOSED LOOP AUTOMATED INSULIN DEVICE IN PAEDIATRIC AND ADOLESCENT PATIENTS
- ID:259 > **Oliveira Lemos, Ana**
DISTINCTIVE PHENOTYPIC FEATURES OF WAARDENBURG SYNDROME: A CLINICAL CASE REPORT WITH PHOTOGRAPHIC DOCUMENTATION
- ID:261 > **Oliveira Lemos, Ana**
RECURRENT WHEEZING IN CHILDREN: CLINICAL CHARACTERIZATION AND RISK FACTORS BEFORE 5 YEARS OF AGE
- ID:330 > **Oliveira Lemos, Ana**
SCREEN TIME IN CHILDREN AGED 3–10: CONTRASTING PATTERNS IN NEURODEVELOPMENTAL AND NEUROTYPICAL POPULATIONS

VIRTUAL ORAL PRESENTATIONS (02V-OP-d1B)

Thursday 4 December 11:30-13:30 **VIRTUAL**

- ID:125 > **Azam, Rida**
FIBROUS DYSPLASIA DIAGNOSIS IN A 13-YEAR-OLD: A CASE REPORT
- ID:149 > **Smrithi, Lakshmi**
DEVELOPMENT AND VALIDATION OF AN INTERGRATED INTERVENTION MODULE FOR COMBATING GAMING ADDICTION AMONG ADOLESCENTS
- ID:152 > **Gohur, Habiba**
MANAGING HYPOMINERALIZED SECOND PRIMARY MOLARS, THE HALL TECHNIQUE
- ID:184 > **Jajeh, Neda**
EMBEDDING ORAL HEALTH EDUCATION IN UK SCHOOLS: A NATIONAL ONLINE SURVEY OF TEACHERS

- ID:199 > **Lambe, Tabitha**
AN AUDIT ON THE METABOLIC EFFECT OF CONTINUOUS SUBCUTANEOUS INSULIN INFUSION (CSII) THERAPY IN A COHORT OF PAEDIATRIC PATIENTS WITH TYPE 1 DIABETES MELLITUS AT ST MARY'S HOSPITAL, LONDON
- ID:200 > **Lambe, Tabitha**
A QUALITY IMPROVEMENT PROJECT OF THE PAEDIATRIC TEACHING PROGRAMME FOR LIVERPOOL UNIVERSITY MEDICAL STUDENTS AT WHISTON HOSPITAL
- ID:201 > **Qaqish, Rasha**
PRESENTED WITH ASTHMA DIAGNOSES ENDED UP WITH OPEN HEART SURGERY
- ID:204 > **Tavares, Teresa**
HIDRADENITIS SUPPURATIVA IN THE PEDIATRIC POPULATION: A 4-YEAR COHORT IN A TERTIARY HOSPITAL
- ID:212 > **O'Brien, Beth**
CLINICAL AUDIT TO DETERMINE IF CHILDREN WITH TYPE I DIABETES HAVE ACCESS TO A DENTIST AND RECEIVE ENHANCED ORAL HEALTH PREVENTION
- ID:216 > **Seabra Ruivo, Micaela**
"JUST A LEG PAIN": RARE PRESENTATION OF ALK-POSITIVE ANAPLASTIC LARGE CELL LYMPHOMA IN ADOLESCENCE
- ID:237 > **Patel, Radhika**
EVALUATING INFANT PRESENTATIONS TO ACCIDENT & EMERGENCY: COULD BETTER INFORMATION KEEP THEM AT HOME?
- ID:241 > **Abreu Peixoto, Catarina**
DIAGNOSTIC CHALLENGES IN A CHILD WITH FAILURE TO THRIVE: A CASE OF SHORT SYNDROME
- ID:291 > **Tavares, Teresa**
LATE-ONSET NONKETOTIC HYPERGLYCEMIA – CLINICAL CASE
- ID:306 > **Keary, Ian**
ASSESSMENT OF THE INTERNATIONAL RISK SCORING TOOL FOR IDENTIFYING MODERATE-TO-LATE PRETERM INFANTS AT GREATEST RISK OF SEVERE RESPIRATORY SYNCYTIAL VIRUS INFECTION USING DATA FROM SINGAPORE
- ID:317 > **Giblin, Susan**
A PROSPECTIVE 1 YEAR REVIEW OF CHILDREN ADMITTED TO GENERAL PAEDIATRIC WARD IN A REGIONAL IRISH HOSPITAL FOR MENTAL HEALTH ASSESSMENT
- ID:327 > **Tavares, Teresa**
THE INFLUENCE OF BODY COMPOSITION IN THE EVALUATION OF RENAL FUNCTION IN ADOLESCENTS WITH ANOREXIA NERVOSA
- ID:328 > **Abreu Peixoto, Catarina**
CLINICAL IMPORTANCE OF NON-D RH ANTIBODIES: FAMILY CASE REPORT OF A NEONATAL HEMOLYTIC DISEASE
- ID:340 > **Bradley, Grace**
THE ABC PROJECT: ADMISSION BLOODS FROM THE CORD - HAS POTENTIAL TO REDUCE BLOOD LOSS IN EXTREME PRETERM INFANTS
- ID:347 > **Hulk, Annalize**
ANALYZING SEPTIC WORKUPS PERFORMED ON NEONATES AT THE COOMBE HOSPITAL: AN AUDIT STUDY
- ID:350 > **Algamedi, Sarah**
SCOPING REVIEW OF PROFESSIONAL JUDGMENT AND REPORTING CRITERIA IN PEDIATRIC SUPERVISORY NEGLECT
- ID:333 > **Ojha, Alina**
WHEN, WHERE, AND HOW HAVE VACCINES BEEN INTEGRATED INTO EXISTING HEALTH SERVICES IN LOW AND MIDDLE INCOME COUNTRIES? A SYSTEMATIC REVIEW

ORAL PRESENTATIONS (03L-OP-d1D)

Thursday 4 December 17:00 - 19:00 **MIRO III**

- ID:146 > **Hassan, Muad Abdi**
COMPARATIVE STUDY OF SLEEP INCONSISTENCIES AND SLEEP-RELATED DISORDERS IN CHILDREN AND ADOLESCENTS WITH ADHD: TRENDS IN QATAR

- ID:148 > **Hassan, Muad Abdi**
MULTI-DIMENSIONAL HEALTH EVALUATION IN CHILDREN WITH ADHD ON STIMULANT THERAPY: A FOCUS ON CARDIAC, NUTRITIONAL, AND GROWTH METRICS
- ID:155 > **Hassan, Muad Abdi**
IDENTIFICATION OF A NOVEL BIALLELIC METTL5 VARIANT ASSOCIATED WITH INTELLECTUAL DISABILITY AND ADHD IN A CONSANGUINEOUS QATARI POPULATION
- ID:158 > **Kiing, Jennifer SH**
REFLECTIVE PRACTICE IN DEVELOPMENTAL PAEDIATRICS - CASE SERIES
- ID:174 > **Bennett, Emily**
UNHEARD, UNPROTECTED, UNPREPARED: HUMAN RIGHTS EDUCATION IS THE MISSING LINK IN GLOBAL PAEDIATRIC SAFEGUARDING
- ID:178 > **Oballo-Uy, Maurice Clemense**
PELIZAEUS-MERZBACHER-LIKE DISEASE TYPE II IN A FILIPINO INFANT: A CASE REPORT
- ID:210 > **Shorrocks, William**
PLACENTAL MEMBRANE ASPIRATION: A RARE CAUSE OF NEONATAL RESPIRATORY DISTRESS
- ID:211 > **Black, Gemma; Zheng, Susan**
INVESTIGATION AND FOLLOW-UP OF CHILDHOOD IGA VASCULITIS : AN AUDIT IN A DISTRICT GENERAL HOSPITAL
- ID:220 > **Alherz, Walaa**
DOUBLE JEOPARDY IN THE CRADLE: A NOVEL INFANTILE CNS CO-INFECTION WITH SALMONELLA AND CYTOMEGALOVIRUS
- ID:247 > **Al Kurdi, Moussa**
VIRTUAL WARDS, REAL RESULTS: EVALUATING IMPACT ON PAEDIATRIC BED CAPACITY AND CARE CONTINUITY
- ID:255 > **Jaber, Samar**
THE FEVER FIRESTORM: SOLVING A COMPLEX PEDIATRIC IMMUNE PUZZLE WITH A MULTIDISCIPLINARY LENS
- ID:338 > **Algarin, Cecilia**
EFFECTS OF INFANT FEEDING TYPE IN THE FIRST YEAR OF LIFE ON AUDITIVE COMPREHENSION OF LANGUAGE AT 6 YEARS
- ID:343 > **Prasad, Arun**
BRAIN ABSCESS IN CHILDREN WITH TETRALOGY OF FALLOT AND ITS PREVENTION

VIRTUAL POSTER PRESENTATIONS (04V-PT-d1D)

Thursday 4 December 17:00-19:00 VIRTUAL

- ID:106 > **Kuganathan, Vithusan**
AN AUDIT ON BRONCHIOLITIS MANAGEMENT IN ADMITTED PAEDIATRIC PATIENTS
- ID:110 > **Moses, Manu Peruvellil; Ravishankar, Jhyni**
QUALITY IMPROVEMENT PROJECT TO ALIGN RDUH PAEDIATRIC ANTIMICROBIAL GUIDELINES WITH THE UK PAS FRAMEWORK
- ID:114 > **Low, Sherry Zhi Qing**
EPIDEMIOLOGY OF INPATIENT PAEDIATRIC MORTALITIES FROM 2011-2020: A SINGLE CENTRE STUDY
- ID:117 > **Mansoor, Masab**
ANALYSIS OF PEDIATRIC COVID-19 VACCINATION IN THE UNITED STATES: RECOMMENDATIONS, UPTAKE, AND CONTEXT FOR THE 2024-2025 SEASON
- ID:161 > **Gohur, Habiba**
IMPACTED DILACERATED MAXILLARY SECOND MOLAR DUE TO OVERLYING THIRD MOLAR: A CASE REPORT
- ID:182 > **Roberts, Edward**
ASSESSING REFERRAL APPROPRIATENESS FOR TORUS (BUCKLE) AND MINIMALLY DISPLACED CLAVICLE FRACTURES TO A PAEDIATRIC VIRTUAL FRACTURE CLINIC

- ID:198 > **Picton, Evie**
AN UNUSUAL CAUSE OF CHEST PAIN
- ID:219 > **Moukarzel, Adib**
A REAL-WORLD STUDY ON THE USE OF TWO RICE PROTEIN- BASED FORMULAS, THICKENED AND UNTHICKENED AT HOTEL-DIEU DE FRANCE HOSPITAL, LEBANON
- ID:223 > **Aprianti, Shindy Claudya**
IRON DEFICIENCY AND STUNTING: ARE BASIC HEMATOLOGY INDICES ENOUGH FOR EARLY SCREENING?
- ID:224 > **Aprianti, Shindy Claudya**
FROM STUNTING TO OBESITY: THE EMERGING BURDEN OF PEDIATRIC DIABETES IN LOW- AND MIDDLE-INCOME COUNTRIES
- ID:225 > **Aprianti, Shindy Claudya**
FATHERS' ROLE IN CHILD NUTRITION AND GROWTH: AN OVERLOOKED FACTOR IN STUNTING PREVENTION
- ID:242 > **Azam, Rida**
SURGICAL CHALLENGES IN PAEDIATRIC FACIAL FRACTURES: A CASE REPORT OF COMPLEX MIDFACIAL TRAUMA IN A 14-YEAR-OLD
- ID:243 > **Azam, Rida**
AN AUDIT OF DID NOT ATTEND RATES IN PAEDIATRIC DENTISTRY
- ID:244 > **Prescilla, Randy**
TOTAL IMMUNOGLOBULIN E REDUCTION WITH DUPILUMAB IN PEDIATRIC MODERATE-TO-SEVERE ATOPIC DERMATITIS: 1.5-YEAR FOLLOW-UP DATA
- ID:249 > **Moraco, Andrew**
DUPILUMAB REDUCES SEVERE EXACERBATION RATES AND TOTAL IGE LEVELS IN CHILDREN WITH TYPE 2 ASTHMA, IRRESPECTIVE OF TRANSIENT INCREASE IN EOSINOPHILS
- ID:275 > **Raychaudhuri, Hemmay**
UNDERSTANDING THE SIGNIFICANCE OF HOLTER MONITORING IN CHILDREN PRESENTING WITH CHEST PAIN AND PALPITATIONS, A LITERATURE REVIEW AND SHARING OUR EXPERIENCE
- ID:278 > **Castañeda, Laura Elena**
HELICOBACTER PYLORI IN AN 8 MONTH OLD INFANT
- ID:282 > **Tomkins, Alice**
A SMILING X-RAY: UNRAVELLING THE MYSTERY OF A MISLEADING IMAGE
- ID:284 > **Bedir, Firat**
SEVERE ADENOVIRUS PNEUMONIA IN A CHILD WITH DOWN SYNDROME
- ID:288 > **Saher, Iqra**
SUSPECTED SALT POISONING IN A 2-MONTH-OLD INFANT: A RARE PRESENTATION OF SEVERE HYPERNATREMIA AND SAFEGUARDING CHALLENGES
- ID:296 > **Sharma, Samana**
ORAL CLUES TO GUT TRUTHS: UNMASKING CROHN'S DISEASE IN CHILDREN
- ID:309 > **Handelsman, John**
NEONATAL HIP DYSPLASIA -- MANAGEMENT BY LONG TERM NIGHT SPLINTING
- ID:322 > **Menezes Sanhudo, Gonçalo**
INADVERTENT ADMINISTRATION OF ANTI-D IMMUNOGLOBULIN TO A RH-POSITIVE NEWBORN: A CASE REPORT
- ID:331 > **Ghouri, Mahgul Rahil**
DIGITISING NEONATAL CARE: VIRTUAL WARD ROUNDS AS A TOOL FOR BETTER COMMUNICATION AND OUTCOMES
- ID:332 > **Carollo, Madison**
INFECTION PREVENTION STRATEGIES IN PEDIATRIC CARDIAC SURGERY MIDLINE INCISION SITES
- ID:254 > **Syed, Syeda Ibadat**
EXPRESSIONS INTERRUPTED: A CASE ANALYSIS OF RIGHT FACIAL NERVE PALSY, AS A COMPLICATION OF ACUTE OTITIS MEDIA

ORAL PRESENTATIONS (05L-OP-d2A)

Friday 5 December 09:00 - 11:00 **MIRO III**

- ID:167 > **Intusup, Supawadee**
QUALITY AND OUTCOMES IMPROVEMENT OF HOSPITALIZED PEDIATRIC ASTHMA: EFFECT OF INSTITUTIONAL ACUTE ASTHMA GUIDELINE
- ID:189 > **Chuaypanang, Porrarat**
THE ASSOCIATION BETWEEN CAREGIVER'S ASTHMA-RELATED KNOWLEDGE AND TREATMENT OUTCOMES IN CHILDREN WITH ASTHMA
- ID:190 > **Nechifor, Ligia**
THE RISK OF PORT-A-CATH ASSOCIATED THROMBOSIS IN PAEDIATRIC PATIENTS WITH SICKLE CELL DISEASE
- ID:217 > **Bhamra-Gahle, Mya**
ADMISSION AVOIDANCE IN FEBRILE CHILDREN: THE ROLE OF OPEN ACCESS, VIRTUAL WARD PATHWAYS, AND EFFECTIVE SAFETY NETTING MEASURES
- ID:231 > **Alsaad, Deema**
ECTOPIC THYMUS IN NEWBORN, A CASE REPORT
- ID:233 > **Manandhar, Tisa; Mehmi, Krisha**
IMPROVING DISCHARGE PLANNING AND PATIENT FLOW IN A GENERAL PAEDIATRICS WARD: A QUALITY IMPROVEMENT PROJECT
- ID:239 > **Siddiqui, Ibadur**
EARLY AND LATE MORTALITY IN PAEDIATRIC AORTIC VALVE REPLACEMENT A SYSTEMATIC REVIEW WITH META ANALYSIS
- ID:258 > **Martins, Alice**
ACUTE CONFUSIONAL MIGRAINE IN PEDIATRIC AGE: AN ENTITY TO REMEMBER
- ID:260 > **Martins, Alice**
THE ENIGMA OF HYPERFERRITINEMIA
- ID:268 > **Oyenyi, Juliana**
DIAGNOSTIC YIELD OF LABORATORY AND IMAGING INVESTIGATIONS IN FEBRILE CHILDREN: IMPLICATIONS FOR RESOURCE USE
- ID:316 > **Al Lawati, Mohammed**
THE USE OF AN AUDIO-VISUAL METHOD IN COUNSELING FOR PEDIATRIC LUMBAR PUNCTURE PROCEDURE, A RANDOMIZED CONTROLLED TRIAL IN PEDIATRIC EMERGENCY SETTINGS
- ID:341 > **Keenan, Kate**
UNCOUNTED AND OVERLOOKED: MENTAL HEALTH ADMISSIONS TO ACUTE PAEDIATRIC WARDS IN IRELAND

ORAL PRESENTATIONS (06L-OP-d2B)

Friday 5 December 11:30 - 13:30 **MIRO III**

- ID:111 > **Walters, Ben**
PILOT EVALUATION OF AN ONLINE RESOURCE FOR LEARNING PAEDIATRIC CHEST RADIOGRAPH INTERPRETATION
- ID:112 > **Walters, Ben**
PREDICTORS OF THYROID CANCER IN PAEDIATRIC PATIENTS WITH THYROID NODULES: A SYSTEMATIC REVIEW AND META-ANALYSIS
- ID:202 > **Webb, Zara**
DIAGNOSTIC DELAY OF ENCEPHALITIS IN A CHILD WITH QUADRAPLEGIC CEREBRAL PALSY: COGNITIVE BIAS IN ACTION.
- ID:205 > **Laurent, Julie**
DESCRIBING THE BURDEN OF RSV INFECTION AND SUBSEQUENT WHEEZING IN TODDLERS: AN INTERNATIONAL CROSS-SECTIONAL STUDY

- ID:266 > **Sousa Fernandes, Sara**
EARLY-ONSET NEONATAL SEPSIS: THE EXPERIENCE OF A PORTUGUESE HOSPITAL
- ID:298 > **Almamari, Aisha**
THE BURDEN OF INFLUENZA INFECTION IN PEDIATRIC PATIENTS A FIVE-YEAR RETROSPECTIVE CROSS-SECTIONAL STUDY IN TERTIARY CARE CENTERS IN OMAN
- ID:305 > **Khan, Sania**
UNEXPECTED INTRAOPERATIVE DISCOVERY OF MÜLLERIAN STRUCTURES IN A 6-YEAR-OLD MALE: A CASE OF PERSISTENT MÜLLERIAN DUCT SYNDROME WITH A PATHOGENIC AMHR2 VARIANT
- ID:312 > **Griggs, Sofia**
CASE SERIES: DON'T BLINK - 2 SYMPTOMATICALLY SIMILAR CASES OF PANCYCYTOPENIA ON THE SAME DAY – WITH VASTLY DIFFERENT AETIOLOGIES
- ID:313 > **Griggs, Sofia**
EBV ENCEPHALITIS: FORGET ME NOT
- ID:318 > **Dockery, Lucy Angela**
NAVIGATING THE TRANSITION: A PROSPECTIVE MIXED METHODS STUDY ON THE IMPACT OF PRIMARY TO SECONDARY SCHOOL TRANSITION ON DISEASE MANAGEMENT
- ID:319 > **Butt, Mariam Arslan**
A STRAIGHTFORWARD AND COMMON DIAGNOSIS OF INFECTIOUS MONONUCLEOSIS IN AN ADOLESCENT TURNING INTO A RARE COMPLICATION AS EBV MENINGOENCEPHALITIS
- ID:323 > **Butt, Mariam Arslan**
DUCHENNE MUSCULAR DYSTROPHY AN EARLY DIAGNOSIS IN FEMALES CAN ALLOW FOR CARDIAC AND RESPIRATORY SURVEILLANCE, INITIATION OF SUPPORTIVE INTERVENTIONS, AND GENETIC COUNSELLING.
- ID:336 > **Lazar, Jessica**
NON-SURGICAL CEREBELLAR MUTISM SYNDROME

POSTER PRESENTATIONS (07L-PT-d2D)

Friday 5 December 17:00 - 19:00 **MIRO III**

- ID:109 > **Al Wahaybi, Khadija Salim**
PSORIASIFORM ERUPTION IN KAWASAKI DISEASE: A RARE CUTANEOUS MANIFESTATION IN AN INFANT
- ID:113 > **Atmalia, Khafifah Puja**
UNSEEN STRUGGLES: UNDERSTANDING RELAPSING TRANSVERSE MYELITIS IN CHILDREN AND ITS IMPACT ON THEIR FUTURE
- ID:115 > **Koscielny, Paula Sofia; Gupta, Mehak; Elangovan, Varunika**
IMPROVING THE PROVISION OF PERSONALISED ASTHMA ACTION PLANS IN THE PAEDIATRIC EMERGENCY DEPARTMENT
- ID:116 > **Kovačech, Ján**
THE RESURGENCE OF PERTUSSIS IN PRIMARY PAEDIATRIC PRACTICE DURING MARCH 2024 TO MARCH 2025 .CHARACTERISTICS OF CASES
- ID:122 > **Primhak, Sarah**
TREATMENT OF IMPETIGO WITH TOPICAL ANTISEPTICS LEADS TO MORE RESIDUAL BACTERIA ON THE SKIN AFTER TREATMENT BUT NOT EARLIER RECURRENCE OF INFECTION
- ID:126 > **Al Saleh, Abdullah**
PREVALENCE OF VITAMIN D DEFICIENCY AMONG CHILDREN IN RIYADH CITY, SAUDI ARABIA
- ID:129 > **Abbasi, Saleha**
ENHANCING RESIDENT PARTICIPATION AND SATISFACTION IN THE LEARNING ENVIRONMENT AT RESIDENTS' CLINIC
- ID:142 > **Ortigado Matamala, Alfonso**
EBSTEIN'S ANOMALY: TWO FACES OF THE SAME DISEASE

- ID:143 > **Ortigado Matamala, Alfonso**
NOVEL BI-ALLELIC MUTATIONS IN THE RPL3L GENE CAUSING SEVERE NEONATAL DILATED CARDIOMYOPATHY
- ID:147 > **Dasal, Ma. Nina Francesca**
OUTCOME OF ANTI-NMDAR ENCEPHALITIS IN CHILDREN TREATED WITH CORTICOSTEROIDS FOLLOWED BY THE ADMINISTRATION OF INTRAVENOUS IMMUNOGLOBULIN VERSUS THERAPEUTIC PLASMA EXCHANGE
- ID:151 > **Smith, Charlotte**
LITTLE LUNGS, BIG IMPACT: STOP SMOKING TO EASE THEIR WHEEZE. A QUALITY IMPROVEMENT PROJECT LOOKING INTO PARENTAL SMOKING CESSATION ADVICE FOR PAEDIATRIC PATIENTS PRESENTING WITH WHEEZE
- ID:160 > **Rulloda, Adrienne Ruth**
CLINICAL PROFILES AND ORGAN INVOLVEMENTS IN FILIPINO PATIENTS WITH DOWN SYNDROME: A DESCRIPTIVE CROSS-SECTIONAL STUDY
- ID:163 > **Fellmeth, Ruth Helena**
INSULIN MISUSE IN ADOLESCENTS WITH T1DM A CLINICAL ETHICS PERSPECTIVE
- ID:176 > **Pathak, Dr Santosh**
INCIDENCE AND RISK FACTORS OF LOW APGAR SCORES AT FIVE MINUTES IN TERM NEONATES: A CASE CONTROL STUDY IN A REGIONAL AUSTRALIAN HOSPITAL
- ID:186 > **Wood, Laura**
VACTERL ASSOCIATION IN A PRETERM NEONATE: BILATERAL SUPERIOR VENA CAVAE AS A RARE CARDIAC VARIANT
- ID:207 > **Fellmeth, Ruth Helena**
ANOREXIA NERVOSA AND AVOIDANT RESTRICTIVE FOOD INTAKE DISORDER (ARFID): A CASE-BASED COMPARISON OF OVERLAPPING SYMPTOMS, DIFFERENTIAL DIAGNOSIS AND TREATMENT
- ID:234 > **Smith, Charlotte; Couret, Patrick**
THE USE OF SKELETAL SURVEY TO IDENTIFY NON-ACCIDENTAL INJURY: AN EVALUATION OF OUR PAEDIATRIC EMERGENCY DEPARTMENT
- ID:236 > **Sučić, Ana**
EXTERNAL ILIAC ARTERY STENOSIS IN A TERM INFANT
- ID:264 > **Nagle, May; Kershaw, Anthony**
"BETTER TOGETHER" EVALUATING THE EFFECTIVENESS OF LEARNING TOGETHER CLINICS IN NORTH WEST LONDON
- ID:280 > **Iliodromiti, Zoi**
DEVELOPMENT AND VALIDATION OF A QUESTIONNAIRE TO ASSESS HEALTHCARE PROFESSIONALS' VIEWS ON PARENTAL PRESENCE DURING NEONATAL RESUSCITATION IN GREECE
- ID:281 > **Al Hamdani, Alaa; Al Riyami, Ruwaina**
THE ASSOCIATION BETWEEN LIVER DYSFUNCTION AND PEDIATRIC VIRAL RESPIRATORY TRACT INFECTION
- ID:292 > **Al Barumi, Marya**
SEVERE ANTENATAL PRESENTATION OF NOVEL DNASE2 MUTATION IN A PRETERM OMANI NEONATE: EXPANDING THE CLINICAL SPECTRUM OF AN ULTRA-RARE INTERFERONOPATHY
- ID:301 > **Sida, Anamaria**
ACUTE ENCEPHALITIS IN HHV-6 INFECTION: IS THERE MORE TO IT?
- ID:307 > **Khan, Sania**
OVARIAN TORSION IN A 20-MONTH-OLD CHILD: A CASE REPORT
- ID:310 > **Dachphan, Natnaree**
RELIABILITY AND VALIDITY OF DRAW-A-PERSON TEST AND GESELL DRAWING TEST FOR ASSESSING INTELLIGENCE IN CHILDREN AGED 6-12 YEARS OLD
- ID:321 > **Lingakumar, Heshana**
WHAT CAN WE LEARN FROM SAFETY INCIDENTS AND CAN WE TRANSLATE THIS INTO PREVENTION - A REVIEW OF DRUG ERRORS ON THE PATIENT SAFETY SYSTEM - "DATIX"

- ID:334 > **Khan, Sania**
SEIZING THE EVIDENCE: AUDIT OF SIMPLE FEBRILE SEIZURE TREATMENT PRACTICES
- ID:346 > **Sheelam, Natasha; Abou-Hamra, Ashraf**
ASTHMA EDUCATION BOX: A QUALITY IMPROVEMENT PROJECT (QIP) TO ENHANCE PAEDIATRIC ASTHMA MANAGEMENT AND DELIVER HOLISTIC CARE THROUGH AN EDUCATIONAL TOOLKIT

VIRTUAL ORAL PRESENTATIONS (08V-0P-d2D)

Friday 5 December

17:00-19:00 VIRTUAL

- ID:238 > **Barroca Macedo, Rita**
PLASTIC BRONCHITIS AND CARDIAC SURGERY: CASUAL LINK OR MERE COINCIDENCE?
- ID:251 > **Barroca Macedo, Rita**
WATER SAFETY: KNOWLEDGE AND BEHAVIOUR OF PORTUGUESE CAREGIVERS - A CROSS-SECTIONAL STUDY
- ID:235 > **Kataya, Dana**
THE FEVER THAT WHISPERED, THE ECHO THAT ROARED: GIANT CORONARY AND SYSTEMIC VASCULITIS IN INFANT KAWASAKI
- ID:240 > **Seabra Ruivo, Micaela**
ACUTE BRONCHIOLITIS DUE TO RESPIRATORY SYNCYTIAL VIRUS: WHAT HAS CHANGED AFTER NIRSEVIMAB? EXPERIENCE FROM A PORTUGUESE HOSPITAL
- ID:250 > **Ferreira, Helena**
GROWTH HORMONE TREATMENT IN CHILDREN WITH GROWTH HORMONE DEFICIENCY: EXPERIENCE FROM A TERTIARY CENTRE
- ID:252 > **Camelo Alves, Francisca**
HOSPITALIZATION OUTCOMES IN INFANTS WITH BRIEF RESOLVED UNEXPLAINED EVENTS PRESENTING WITH APNEA
- ID:256 > **Carvalho, Diana**
A TIGHT ANGLE WITH BIG CONSEQUENCES: SUPERIOR MESENTERIC ARTERY SYNDROME AND NUTCRACKER PHENOMENON IN AN ADOLESCENT
- ID:263 > **Amorim-Figueiredo, Rosa**
CHOREA AS A NON-THROMBOTIC MANIFESTATION IN AN ADOLESCENT WITH SYSTEMIC LUPUS ERYTHEMATOSUS, ANTIPHOSPHOLIPID SYNDROME AND HETEROZYGOUS PROTHROMBIN G20210A GENE MUTATION
- ID:267 > **Zioga, Aikaterini**
EARLY CARDIOVASCULAR CHANGES IN OBESE CHILDREN
- ID:269 > **Ferreira, Helena**
IMAGAWA-MATSUMOTO SYNDROME: A CASE REPORT OF A RARE DIAGNOSIS
- ID:270 > **Ferreira, Helena**
DIAGNOSTIC YIELD FOR FRAGILE X SYNDROME - THE EXPERIENCE OF A PORTUGUESE TERTIARY CARE CENTRE
- ID:271 > **Costa Correia, Bárbara**
SLEEP HABITS AND INSOMNIA RISK IN A PEDIATRIC OUTPATIENT POPULATION
- ID:273 > **Carvalho, Diana**
FLOATING-HARBOR SYNDROME: THE IMPORTANCE OF RECOGNISING CLINICAL FEATURES – TWO CASE REPORTS FROM THE SAME CENTRE
- ID:274 > **Neekhra, Agrini**
A UNIQUE TRIAGE APPROACH TO MANAGEMENT IN PEDIATRIC FEBRILE NEUTROPENIA FOR EFFICIENT PATIENT STABILIZATION AND ANTIBIOTIC ADMINISTRATION
- ID:289 > **Carvalho, Diana**
AUTOIMMUNE MYASTHENIA GRAVIS IN PRESCHOOL-AGED CHILDREN: REPORT OF THREE CASES

- ID:303 > **Smith, Amie**
SERVICE EVALUATION OF PATIENTS ATTENDING THE PAEDIATRIC DENTISTRY EMERGENCY CLINICS AT BRISTOL DENTAL HOSPITAL
- ID:304 > **AlRashed, Fahad**
HERPES SIMPLEX VIRUS CENTRAL NERVOUS SYSTEM INFECTION PRESENTING AS A STROKE: CASE REPORT
- ID:344 > **Costa Correia, Bárbara**
NEONATAL PNEUMOTHORAX IN A LEVEL II NICU: A 10-YEAR RETROSPECTIVE STUDY
- ID:349 > **Alshubaili, Yasmeen**
PARENTS' AWARENESS AND FIRST AID PRACTICES IN PEDIATRIC POISONING IN SAUDI ARABIA: A CROSS-SECTIONAL STUDY
- ID:213 > **Yurumez, Ceren**
PEDIATRIC ANCA-ASSOCIATED VASCULITIS FOLLOWING COVID-19 INFECTION: A CASE REPORT

POSTER PRESENTATIONS (09L-PT-d3A)

Saturday 6 December 09:00 - 11:00 **MIRO III**

- ID:164 > **Romero Merino, Paolo Augusto**
SEVERE NEONATAL HYPOGLYCEMIA DUE TO CONGENITAL HYPERINSULINISM: DIAGNOSTIC AND THERAPEUTIC CHALLENGES
- ID:179 > **Romero Merino, Paolo Augusto**
CENTRAL DIABETES INSIPIDOUS AS A DIAGNOSTIC CHALLENGE IN AN INFANT WITH SEPTO-OPTIC DYSPLASIA AND DEVELOPMENTAL DELAY: A CASE REPORT
- ID:181 > **Bonnekoh, Linda Meredith**
HIGH-FREQUENCY PRESENTATIONS TO EMERGENCY AND CHILD AND ADOLESCENT MENTAL HEALTH SERVICES IN A 15-YEAR-OLD GIRL WITH COMPLEX PSYCHOPATHOLOGY AND PARTIAL FETAL ALCOHOL SPECTRUM DISORDER
- ID:183 > **Romero Merino, Paolo Augusto**
NEONATAL ECTHYMA GANGRENOSUM IN AN EXTREMELY PREMATURE INFANT: IMPORTANCE OF EARLY RECOGNITION AND PROMPT TREATMENT
- ID:185 > **Green, Ruth**
ENHANCING CHILD DEVELOPMENT EDUCATION FOR MEDICAL STUDENTS THROUGH EXPERIENTIAL LEARNING: A NURSERY PLACEMENT PILOT STUDY
- ID:187 > **Bonnekoh, Linda Meredith**
CASE SERIES OF FULLY EXCLUDED TODDLERS AND PRESCHOOL CHILDREN FROM CHILDCARE CENTERS IN A PSYCHIATRIC DAY CLINIC COHORT
- ID:193 > **Hovhannisyan, Lilit**
MATERNAL COMORBIDITIES AND PERINATAL RISK FACTORS LINKED TO NICU ADMISSION: A 106-CASE RETROSPECTIVE ANALYSIS IN ARMENIA
- ID:194 > **Grigoryan, Marianna**
RE-EVALUATING THE DIAGNOSIS OF CONGENITAL PNEUMONIA IN NEONATES: A RETROSPECTIVE REVIEW OF 106 NICU CASES IN ARMENIA
- ID:195 > **Serobyanyan, Tamara**
ECHOCARDIOGRAPHIC FINDINGS IN PEDIATRIC PATIENTS WITH INFECTIOUS DISEASES: A RANDOMIZED RETROSPECTIVE REVIEW OF 34 CASES
- ID:196 > **Harutyunyan, Anush**
ECHOCARDIOGRAPHIC FINDINGS IN NEONATES WITH A HISTORY OF PNEUMONIA: A RETROSPECTIVE REVIEW OF 106 CASES IN ARMENIA
- ID:206 > **Živković, Gabriela**
A PRETERM TWIN INFANT WITH CONGENITAL CANDIDIASIS

- ID:208 > **Torreña, Lilette**
ENDOCRINE MANIFESTATIONS OF INTRACRANIAL TUMOR IN CHILDREN
- ID:222 > **Sung, Chi Sum Hannah**
MANAGEMENT OF BRONCHIOLITIS IN INFANTS UNDER 2 : AN AUDIT AGAINST NICE GUIDELINES
- ID:228 > **Demaria, Martina**
RESPIRATORY DISTRESS SYNDROME IN A LATE PRETERM INFANT FOLLOWING MATERNAL INTRAHEPATIC CHOLESTASIS OF PREGNANCY
- ID:232 > **Giritharan, Gayathri**
HOW MUCH IS ENOUGH? A DOSE-RESPONSE ANALYSIS OF PAEDIATRIC EXPOSURE AND STUDENT CONFIDENCE
- ID:257 > **Cerveira Pinto, Vera**
SCIMITAR SYNDROME: UNVEILING A HIDDEN MALFORMATION THROUGH TWO CLINICAL CASES
- ID:262 > **Barnard, Rosa**
EARS: A NOVEL DEBRIEF MODEL FOR IN-SITU PAEDIATRIC SIMULATION
- ID:265 > **Abreu e Cunha, Francisca**
UNEXPECTED COMPLICATION OF A CASE OF RECURRENT WHEEZING
- ID:272 > **Oakley, Zoe; Emechebe, Obianuju**
STAFF EDUCATION ON STANDARDISED BLOOD CULTURE COLLECTION PROCEDURES: AN INTERVENTION IN A UK LEVEL 2 NEONATAL UNIT TO COMBAT RISING CONTAMINATION RATES
- ID:277 > **Amirjanyan, Kristine; Harutyunyan, Sona**
RETROSPECTIVE ANALYSIS OF PEDIATRIC NECK ABSCESES: A SINGLE-CENTER EXPERIENCE OF 16 CASES
- ID:300 > **Al Mubaihsi, Abia**
MONOGENIC MIMIC OF BEHÇET'S DISEASE IN AN OMANI ADOLESCENT: RELA-ASSOCIATED INFLAMMATORY DISEASE
- ID:308 > **Arakelyan, Anna**
CHRONIC VOMITING AND EOSINOPHILIC GASTRODUODENOPATHY MAY MASK ANNULAR PANCREAS IN INFANTS
- ID:311 > **Gheonea, Cristian**
NEONATAL RESPIRATORY DISTRESS REVEALING A CONGENITAL PULMONARY MALFORMATION WITH HISTOLOGICAL FEATURES OF ADENOCARCINOMA: A CASE REPORT
- ID:320 > **Caringal, Kristine Lizette**
SAFETY AND EFFICACY OF PREBIOTIC AND PROBIOTIC SUPPLEMENTATION IN DECREASING GASTROINTESTINAL AND BEHAVIORAL SYMPTOMS AMONG CHILDREN WITH AUTISM SPECTRUM DISORDER: A SYSTEMATIC REVIEW AND META-ANALYSIS
- ID:339 > **Draganescu, Anca-Cristina**
A RARE CLINICAL PRESENTATION OF LANGERHANS CELL HISTIOCYTOSIS IN AN INFANT
- ID:345 > **Dockery, Lucy**
DIABETES AND DEPRIVATION INDEX; ASSESSMENT OF CHANGES OVER TIME IN CONTROL AND THERAPEUTICS

10th LIFECOURSE PREVENTION SUMMIT



**LIFECOURSE
PREVENTION**
Health Matters at Every Stage of Life



CHAIRS

Sir Terence Stephenson and Jane Barratt

BRIEFINGS



Jane Barratt

Ageing, Health, and Social Policy

**Healthy Ageing
– Definitions,
Frameworks, and
Global Targets**



John Beard

Columbia University Irving Medical
Center

**Slowing the Decline
– Emerging Evidence
on the Modifiability of
Ageing Trajectories**



George Davey Smith

Bristol Medical School

**Lifecourse Determinants
of Later-Life Health:
Timing, Exposure, and
Causal Inference**



Nicola Veronese

European Geriatric Medicine Society
(EuGMS)

**The Economic and
Societal Imperative of
Lifecourse Prevention**



George Valiotis

Health Technology Assessment
international (HTAi)

**Health Technology
Assessment for Vaccines:
Why It Matters and What
Europe Must Get Right**



Diane Thomson

International Federation of
Pharmaceutical Manufacturers and
Associations (IFPMA)

**Why Lifecourse and
Adult Immunization are
Essential for an Ageing
Society**

POLICY INTERVENTIONS



Stefania Maggi

European Interdisciplinary
Council on Aging (EICA)



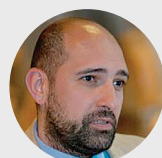
Gregor Sneddon

International Federation on
Ageing (IFA)



Michael Hodin

Global Coalition on Aging
(GCOA)



Mariano Votta

Active Citizenship Network
(ACN)



Marta Lomazzi

World Federation of Public
Health Associations (WFPHA)



Marco Del Riccio

Adult Immunization
Board (AIB)



Thomas Weinke

Project: Flu Protection



Gary Finnegan

Vaccines Today

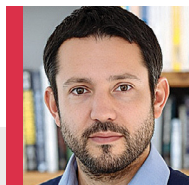
Commenters: **Aubrey Cunnington** (Imperial College London), **Lee Hudson** (UCL Institute of Child Health), **Elena Chiappini** (Meyer Children's University Hospital, Florence),
Laura Realì (European Confederation of Primary Care Pediatricians), **Elizabeth Whittaker** (Imperial College London)

ACTION PLAN DISCUSSION

- How can national and EU-level policies better identify and invest in the most impactful periods for health promotion and disease prevention across the lifespan?
- What concrete policy levers can help embed lifecourse principles in healthcare systems, urban planning, education, and employment sectors to promote healthy ageing outcomes?
- What policy mechanisms are needed to support better use of longitudinal data, promote lifecourse research, and adapt systems to reflect long-term outcomes and return on investment in prevention?
- How can policymakers and public health leaders better align fiscal priorities with long-term health value? What advocacy and policy strategies are needed to ensure prevention is no longer sidelined?
 - How do we make life-course vaccination a foundational component of pandemic preparedness and health security strategies at both national and EU levels?
 - How can we build more equitable, age-inclusive immunization policies that reflect demographic shifts and ensure vulnerable populations aren't left behind?

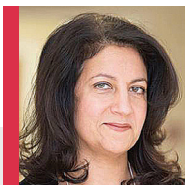
CHAIR
Sir Terence Stephenson

BRIEFINGS



Michael Edelstein
Bar-Ilan University

**Bridging the Gaps:
Overcoming System-
Level Failures in
Vaccination Equity**



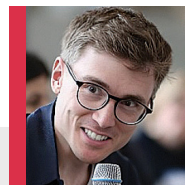
Monica Lakhapaul
UCL GOS Institute of Child Health

**Addressing Structural Barriers
to Childhood Vaccination in
Underserved Communities: Insights
from Co-Designed Interventions**



Rukshana Kapasi
Barnado's

**Addressing Health
Inequalities in RSV:
Lessons from Barnardo's
Public Health Campaign**



Ben Kasstan-Dabush
University of Edinburgh

**Moral Economies of Trust:
Navigating Vaccination
in Marginalized and
Religious Communities**



Pauline Paterson
The London School of Hygiene &
Tropical Medicine (LSHTM)

**Mistrust and
Misperceptions: Vaccine
Trust and Confidence in
the Context of Inequality**



David Taylor-Robinson
University of Liverpool

**Addressing Social
Inequities in Child Health
and Vaccine Uptake:
Evidence from the UK**



Angela Harden
University of London

**Community Engagement
Approaches to Improve
Health: An Analysis of Barriers
and Facilitators in UK Practice**

POLICY INTERVENTIONS



Laura Realì
European
Confederation
of Primary Care
Pediatricians (ECPCP)



Mariano Votta
Active Citizenship
Network (ACN)



George Valiotis
Health Technology
Assessment
international (HTAi)



Marta Lomazzi
World Federation
of Public Health
Associations (WFPHA)



Gary Finnegan
Vaccines Today



Diane Thomson
International Federation
of Pharmaceutical
Manufacturers and
Associations (IFPMA)



Marco Del Riccio
Adult Immunization
Board (AIB)



Ber Oomen
European Specialist
Nurses Organization
(ESNO)



Kitty Mohan
Comité Permanent
des Médecins
Européens (CPME)



Lies Kriek
ReSVINET Foundation



Prosper Hiag
International
Pharmaceutical
Federation (FIP)

Commenters: **Aubrey Cunningham** (Imperial College London), **Lee Hudson** (UCL Institute of Child Health), **Elena Chiappini** (Meyer Children's University Hospital, Florence), **Elizabeth Whittaker** (Imperial College London), **George Syrogiannopoulos** (University of Thessaly), **Lieke Sanders** (National Institute for Public Health and the Environment - RIVM)

ACTION PLAN DISCUSSION

- Translating Evidence into Action: What Policy Levers Can Reduce Vaccination Gaps in the Most Excluded Populations?
- Rebuilding Trust Where Systems Have Failed: How Should Institutions Rethink Communication, Consent, and Community Engagement?
- Designing for Equity from the Start: How Can Equity Be Hardwired into New Vaccine Introduction and Delivery Systems?

CHAIR
Sir Terence Stephenson

BRIEFINGS



Stefania Maggi

European Interdisciplinary Council
on Aging (EICA)

**The Hidden Burden of
Respiratory Viruses in Older
Adults: Why Prevention
Matters**



Susanna Esposito

World Association for Infectious Diseases and
Immunological Disorders (WAIidid)

**Rolling Out Pediatric RSV
Immunization: Lessons from
Across Europe and Beyond**



Marco Del Riccio

Adult Immunization Board (AIB)

**Ensuring Persistent Protection:
Lifespan Strategies Against RSV,
Influenza and SARS-CoV-2 to
Reduce Systemic Health Risks**



Thomas Weinke

Project: Flu Protection

**Strengthening Adult
Respiratory Immunization
Programs: Beyond the Lung**



Roy K. Philip

University Hospital Limerick & University
Maternity Hospital Limerick

**From Pregnancy to Infancy:
Integrating Maternal and
Infant Immunization for RSV**

POLICY INTERVENTIONS



Laura Realì

European
Confederation
of Primary Care
Pediatricians
(ECPCP)



**Mariano
Votta**

Active Citizenship
Network (ACN)



**Marta
Lomazzi**

World Federation
of Public Health
Associations
(WFPHA)



**George
Valiotis**

Health Technology
Assessment
international (HTAi)



Diane Thomson

International Federation
of Pharmaceutical
Manufacturers and
Associations (IFPMA)



Ber Oomen

European Specialist
Nurses Organization
(ESNO)



Kitty Mohan

Comité Permanent
des Médecins
Européens (CPME)



Lies Kriek

ReSVINET
Foundation



**Rukshana
Kapasi**

Barnado's



**Catherine
Weil-Olivier**

Coalition for Life
Course Immunisation
(CLCI)



Jane Barratt

Ageing, Health, and
Social policy



Prosper Hiag

International
Pharmaceutical
Federation (FIP)

Commenters: **Aubrey Cunington** (Imperial College London), **Lee Hudson** (UCL Institute of Child Health), **Elena Chiappini** (Meyer Children's University Hospital, Florence), **Elizabeth Whittaker** (Imperial College London), **George Syrogiannopoulos** (University of Thessaly), **Lieke Sanders** (National Institute for Public Health and the Environment - RIVM), **Rachael Thomas** (ReSVINET)

ACTION PLAN DISCUSSION

- How Can We Move From Fragmented Programmes to an Integrated Respiratory Immunization Strategy Across the Lifespan?
- Raising Public Awareness on Respiratory Infections and Building Demand: What Role Should Citizens, Providers, and Institutions Play?
- Reducing Pressure on Healthcare Systems: What Policy Levers Can Expand Access and Uptake Where It's Most Needed?

