



WASHROOM | SHOWERS

Recreational | Industrial | Oil & Gas | Commercial | Agricultural



Quality

Professional

Trustworthy

Reliable

Innovative



Thank you for considering HERAUF MODULAR for your modular washroom needs. Enclosed is an information package that includes sample layouts, specifications.

Our modular washrooms are an ideal solution for communities looking to enhance public spaces with clean, accessible, and low-maintenance facilities. These units are well-suited for parks, splash pads, outdoor rinks, ball diamonds, recreation courts, and community gathering areas.

Each unit is built with durable materials and designed for long-term use. We offer various layout options, including barrier-free models to meet accessibility requirements, and we can tailor the design to meet the specific needs of your location and users.

Once you've had a chance to review the information, we'd be happy to connect to discuss your goals, answer any questions, and prepare a detailed quote and project timeline. From design to delivery and installation, our team is committed to making the process smooth and efficient.

Thank you again for considering HERAUF MODULAR. We look forward to working with you to create a practical and lasting addition to your community.

Sincerely,
The Herauf Modular Team



Washrooms & Shower Units



Quality

Professional

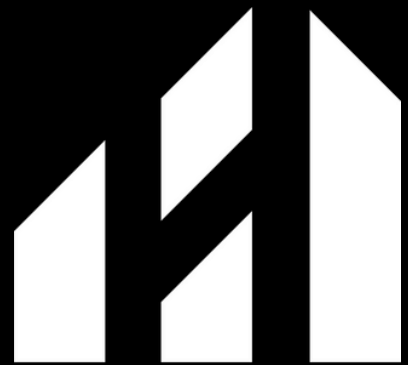
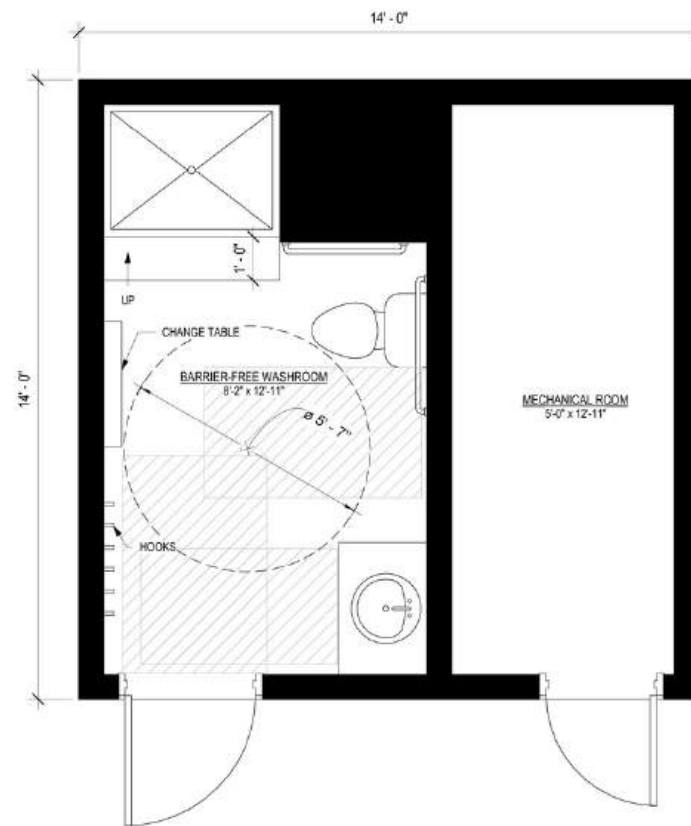
Trustworthy

Reliable

Innovative

14' x 14'
196 sq. ft.

1 Washroom/Shower
Barrier-Free

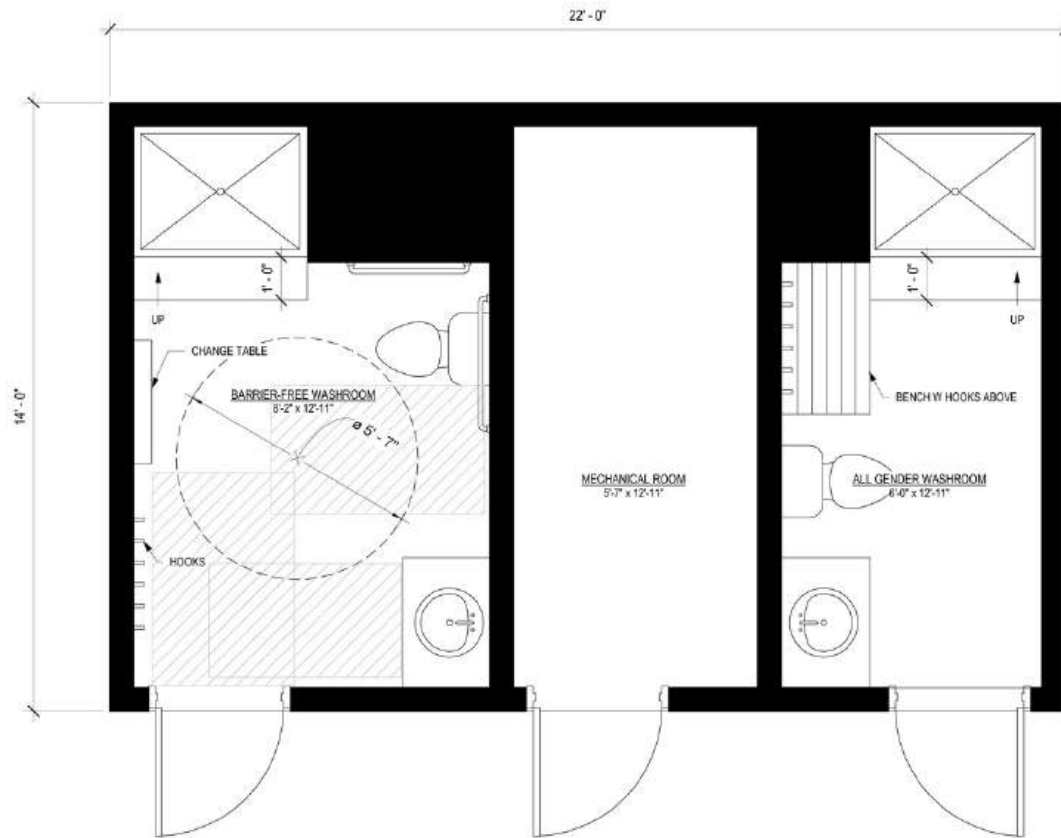


HERAUF
MODULAR



22' x 14'
308 sq. ft.

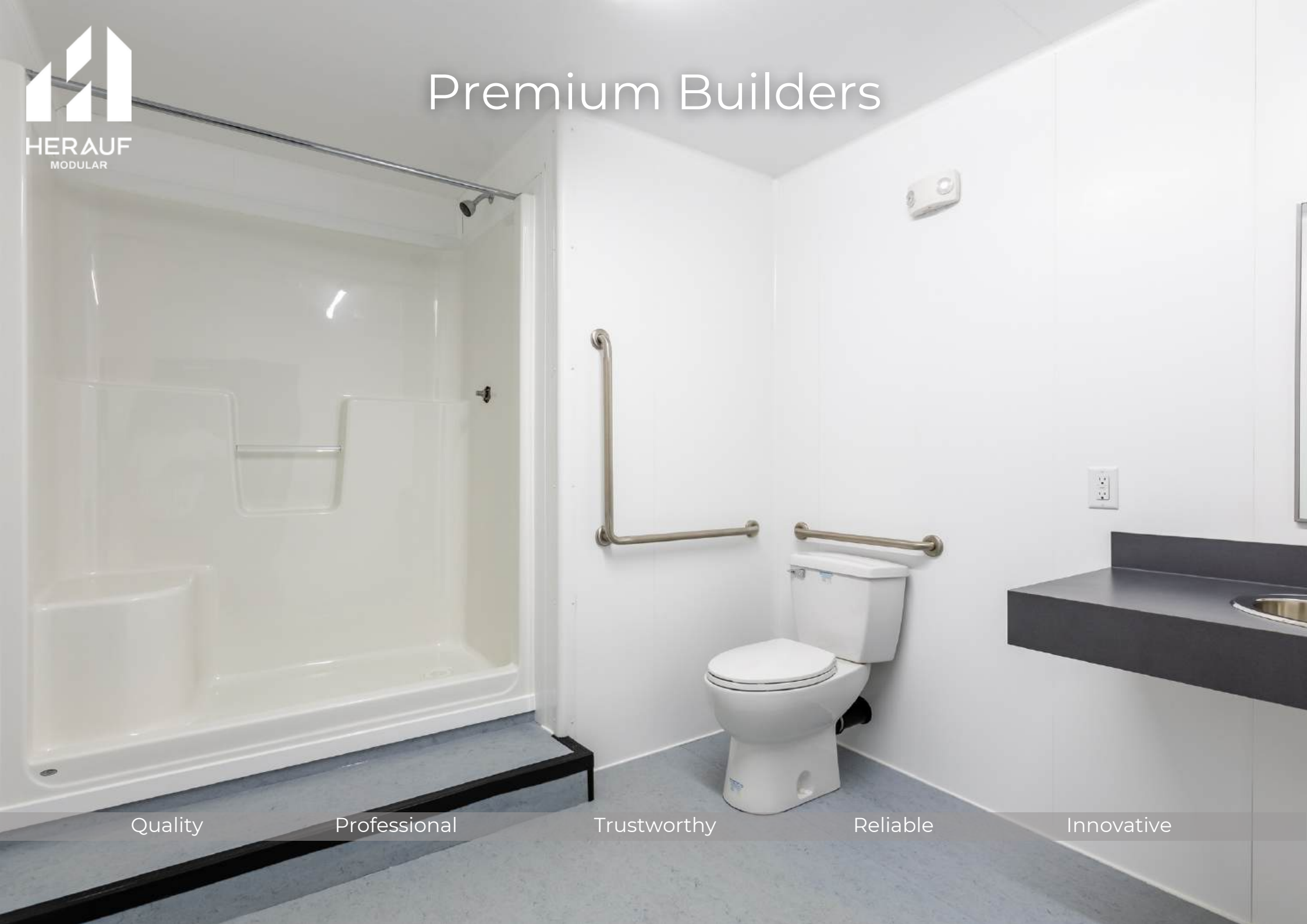
2 Washrooms/Showers
Barrier-Free



HERAUF
MODULAR



Premium Builders



Quality

Professional

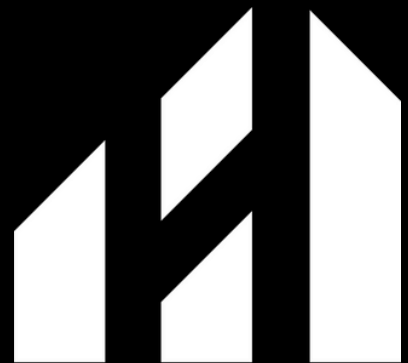
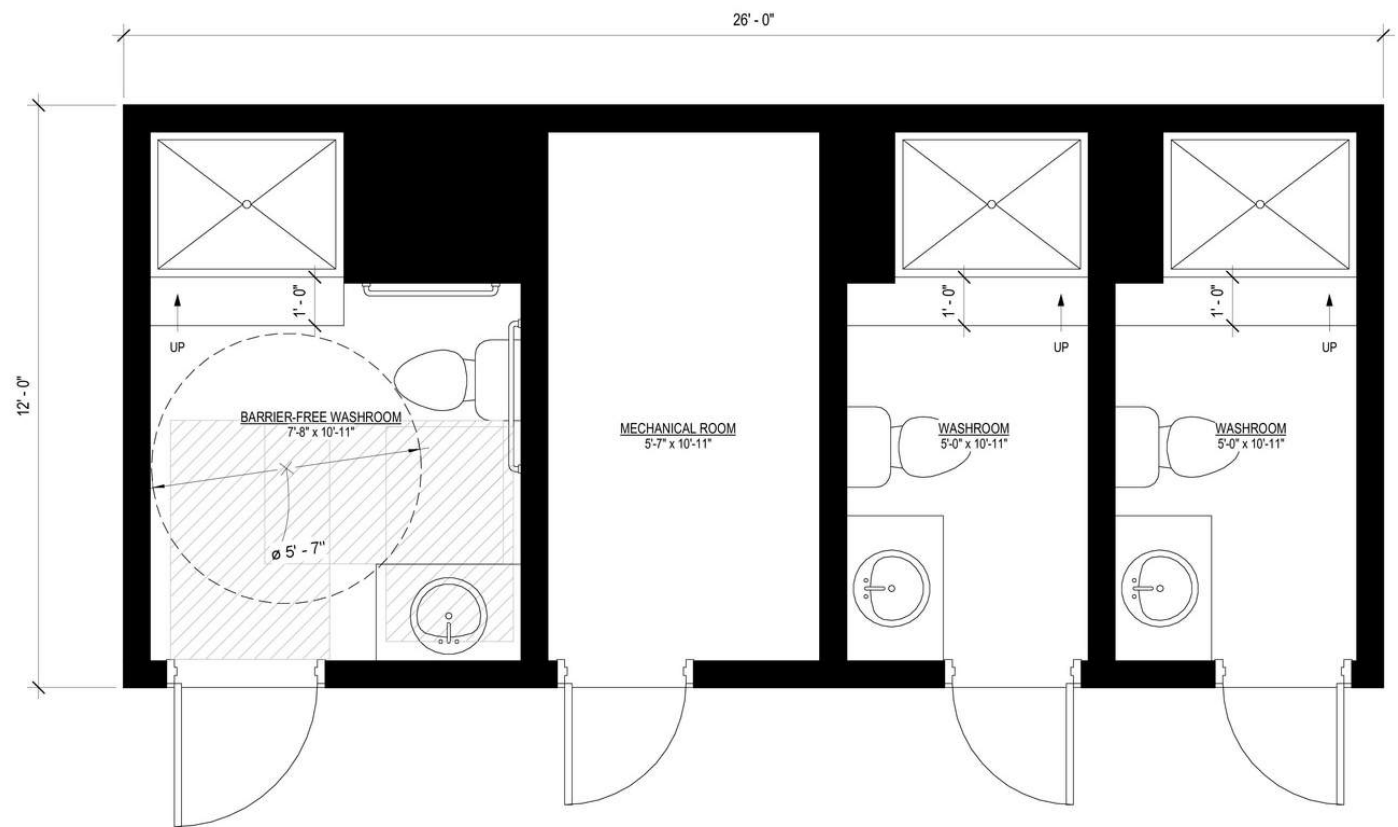
Trustworthy

Reliable

Innovative

26' x 12'
312 sq. ft.

3 Washrooms/Shower
Barrier-Free



HERAUF
MODULAR



Shipping Coast To Coast



Quality

Professional

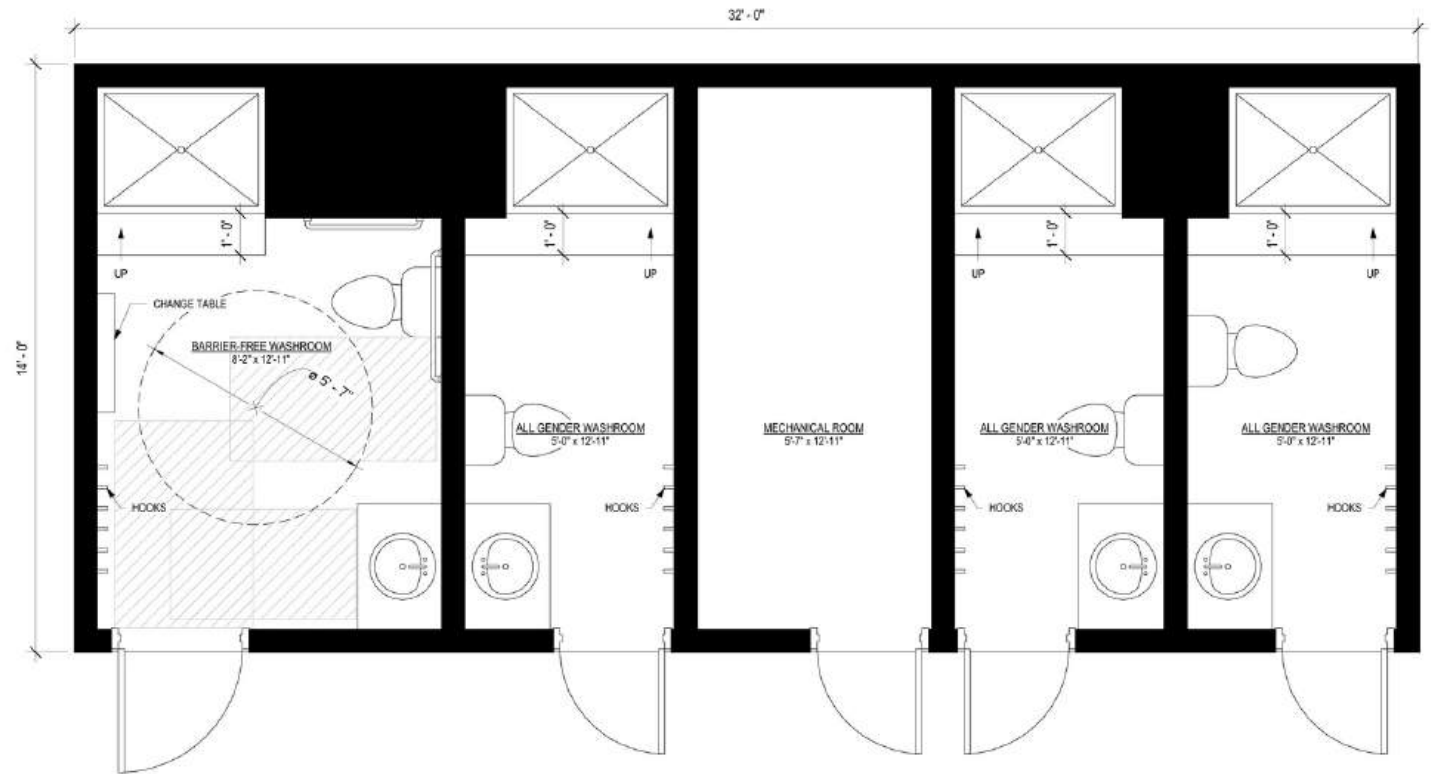
Trustworthy

Reliable

Innovative

32' x 14'
448 sq. ft.

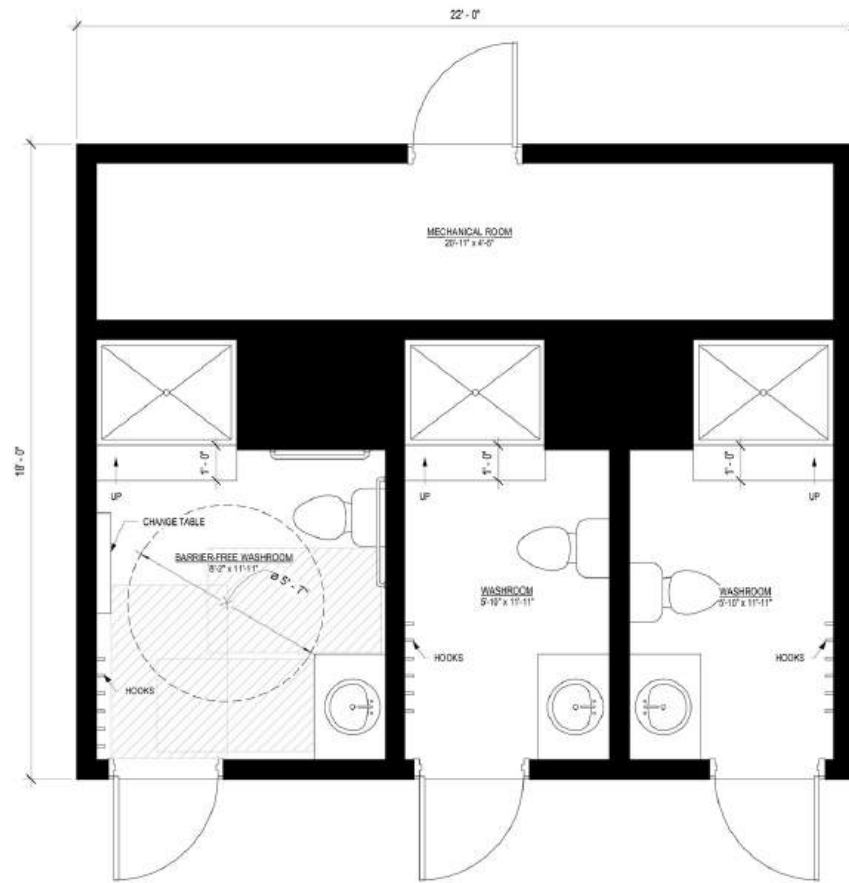
4 Washrooms/Showers
Barrier-Free



HERAUF
MODULAR

22' x 18'
396 sq. ft.

3 Washrooms/Showers
Barrier-Free





Washroom Units



Quality

Professional

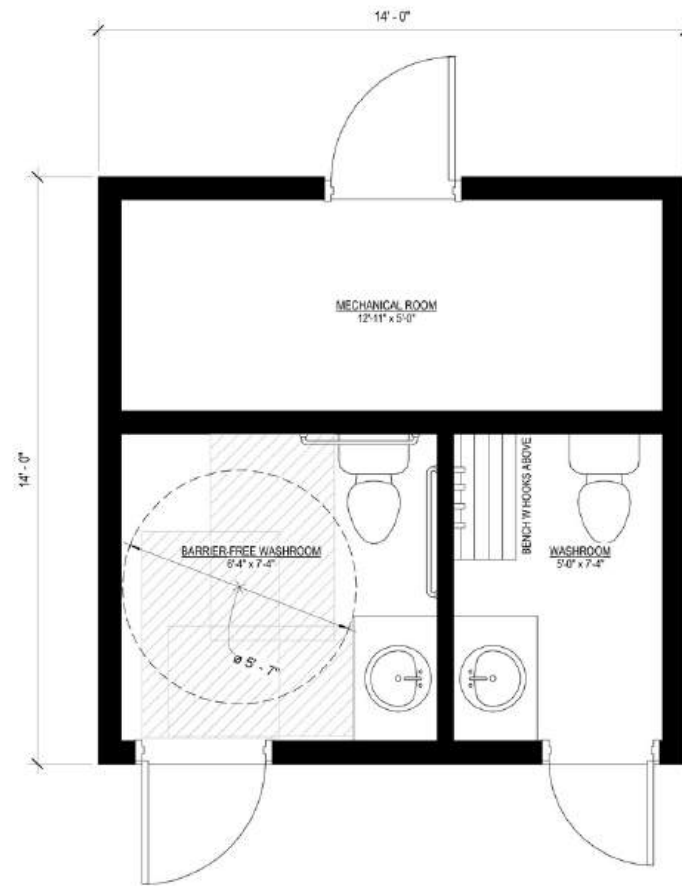
Trustworthy

Reliable

Innovative

14' x 14'
196 sq. ft.

2 Washrooms
Barrier-Free





Quick Install



Quality

Professional

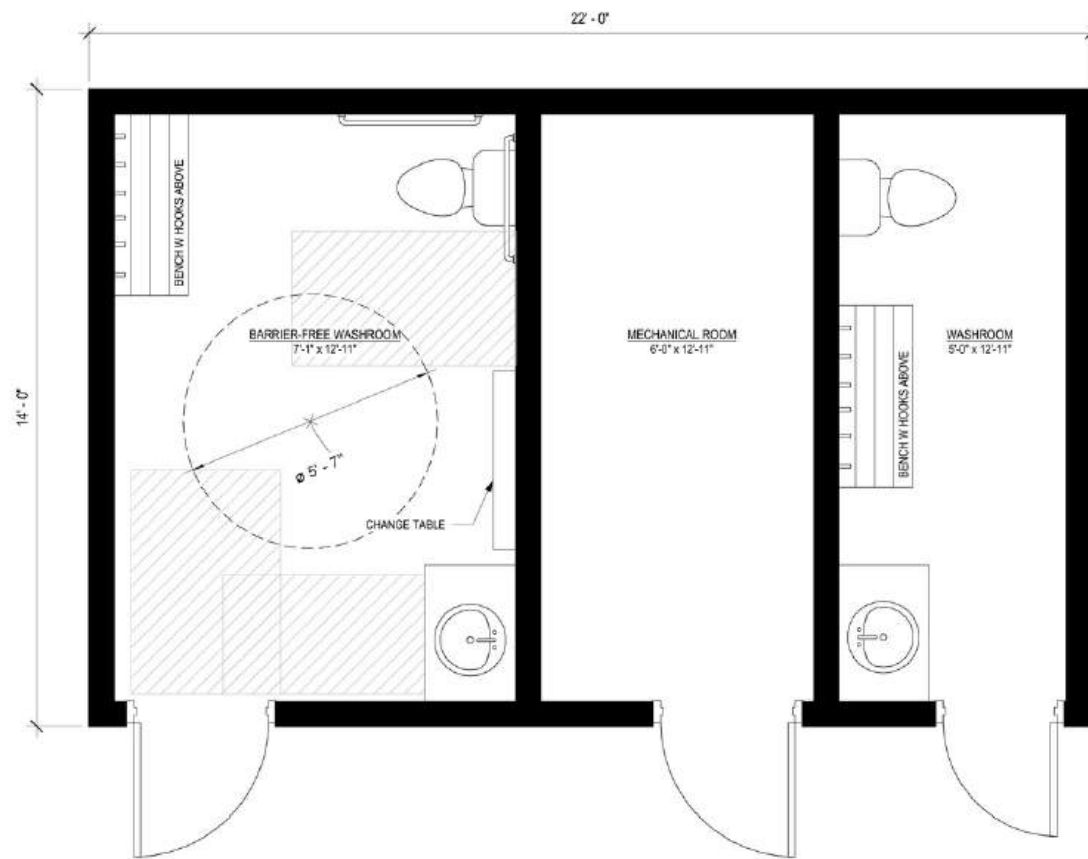
Trustworthy

Reliable

Innovative

22' x 14'
308 sq. ft.

2 Washrooms
Barrier-Free





Contained Mechanical



Quality

Professional

Trustworthy

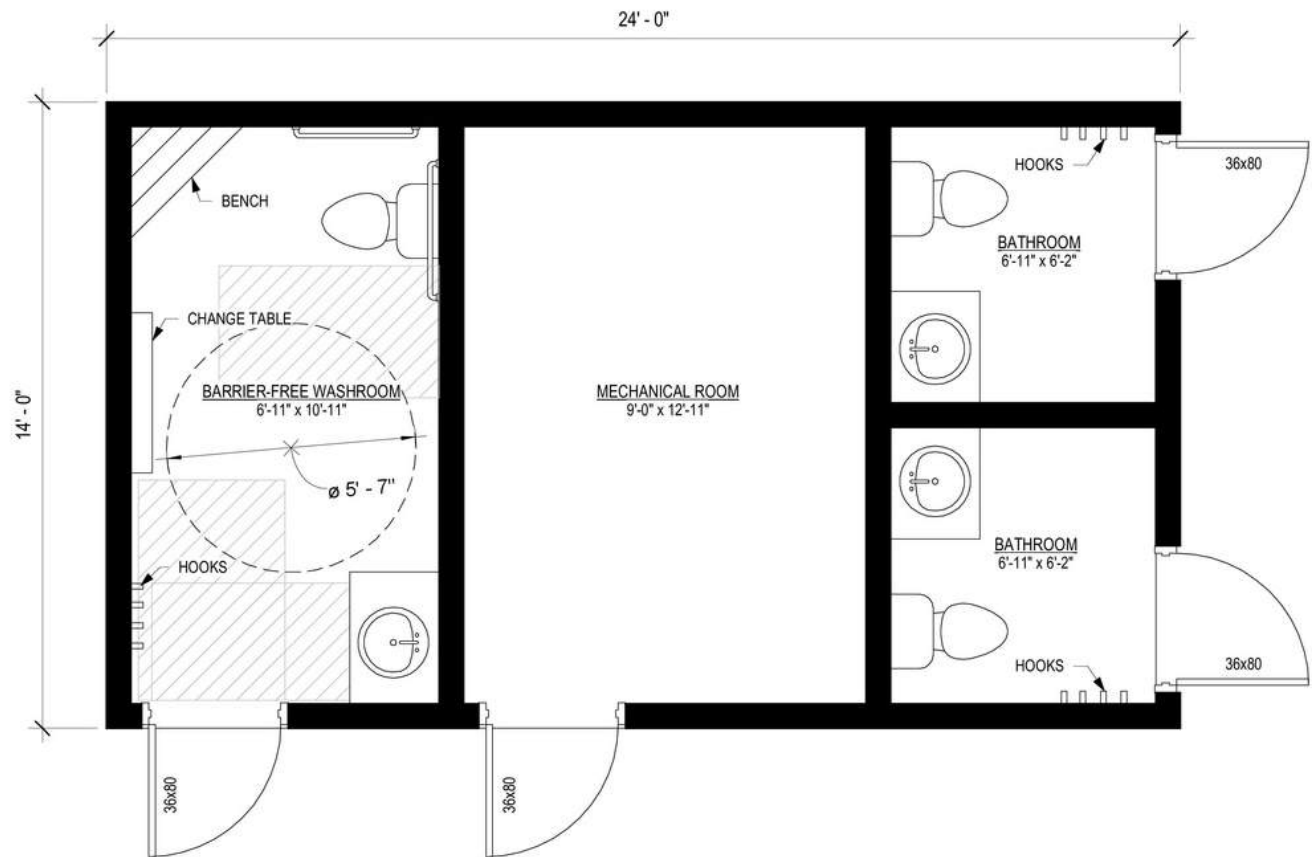
Reliable

Innovative



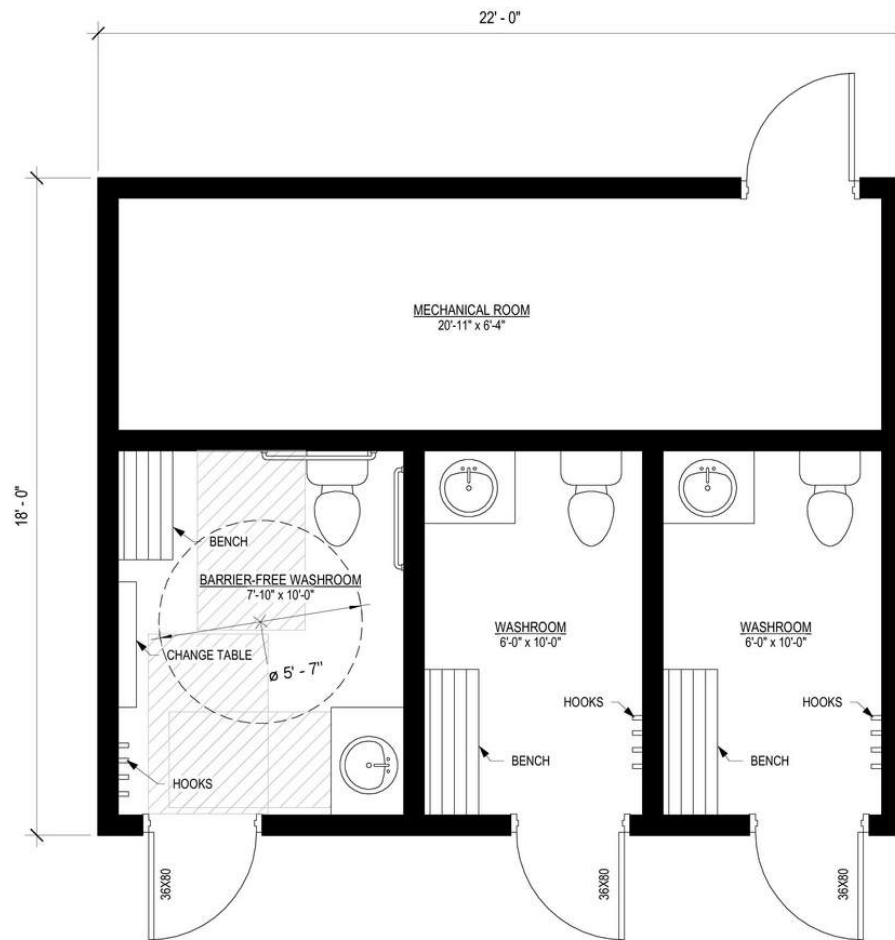
24' x 14'
336 sq. ft.

3 Washrooms
Barrier-Free



22' x 18'
396 sq. ft.

3 Washrooms
Barrier-Free



HERAUF
MODULAR

Cost Effective

Quality

Professional

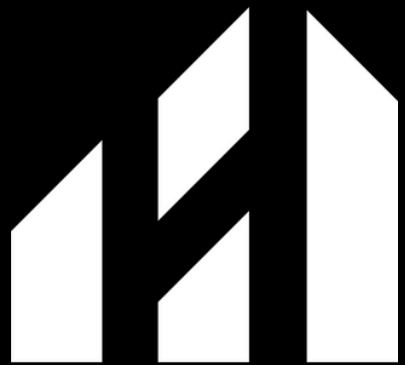
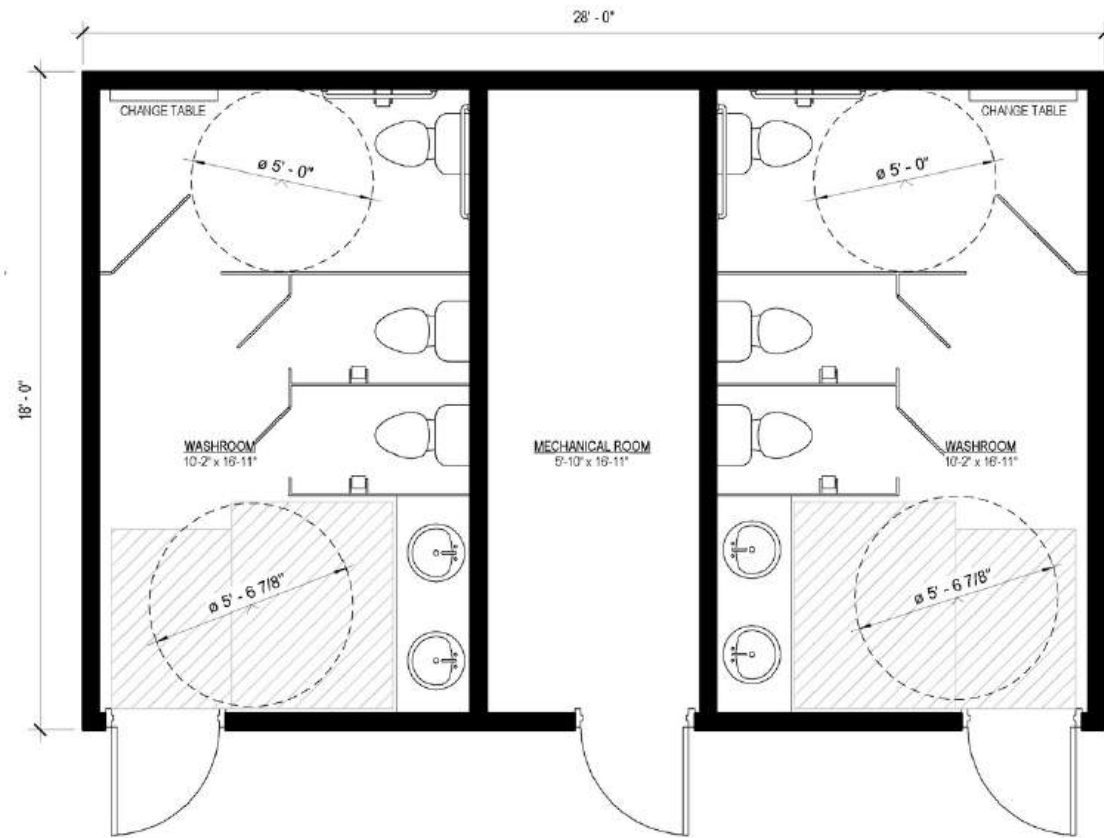
Trustworthy

Reliable

Innovative

28' x 18'
504 sq. ft.

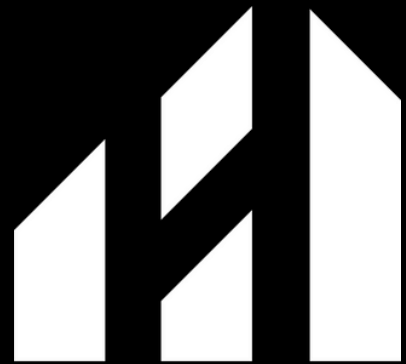
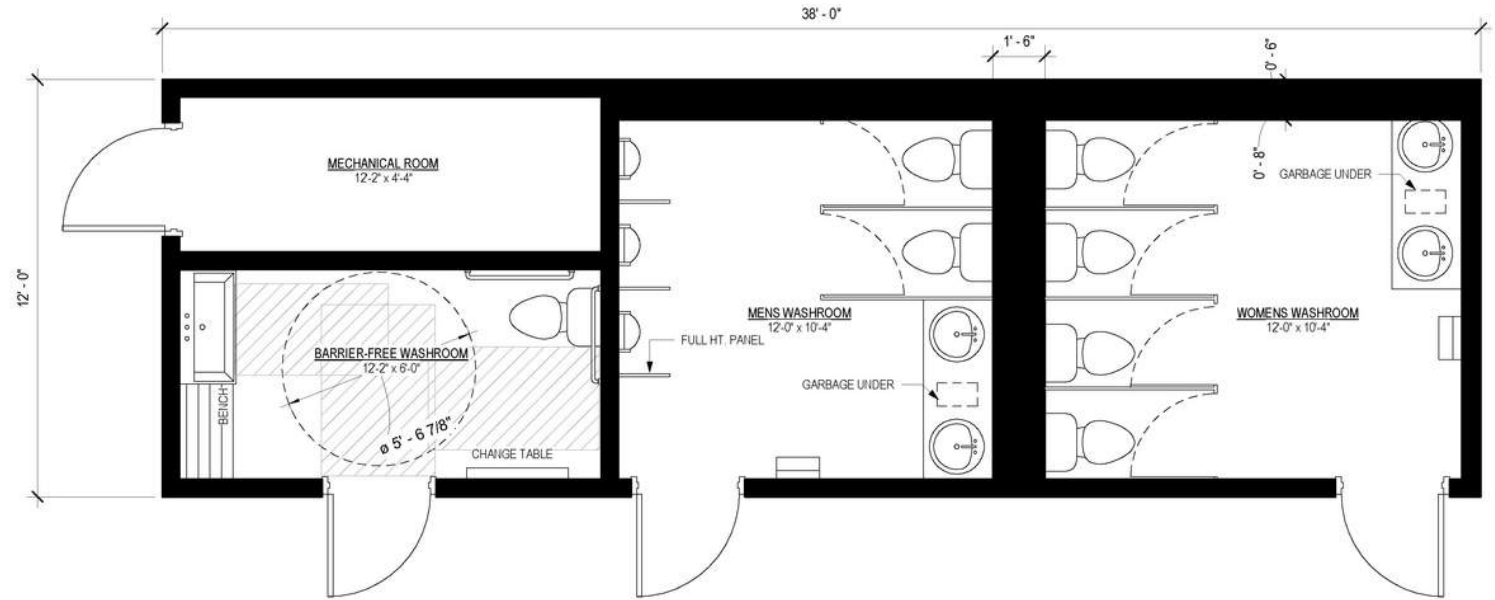
6 Stalls
Barrier-Free



HERAUF
MODULAR

38' x 12'
456 sq. ft.

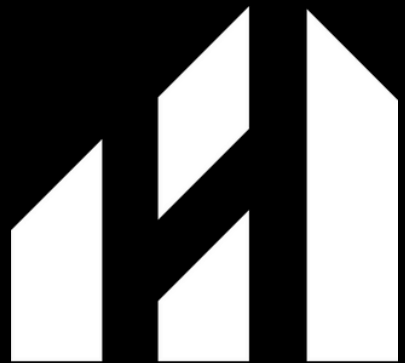
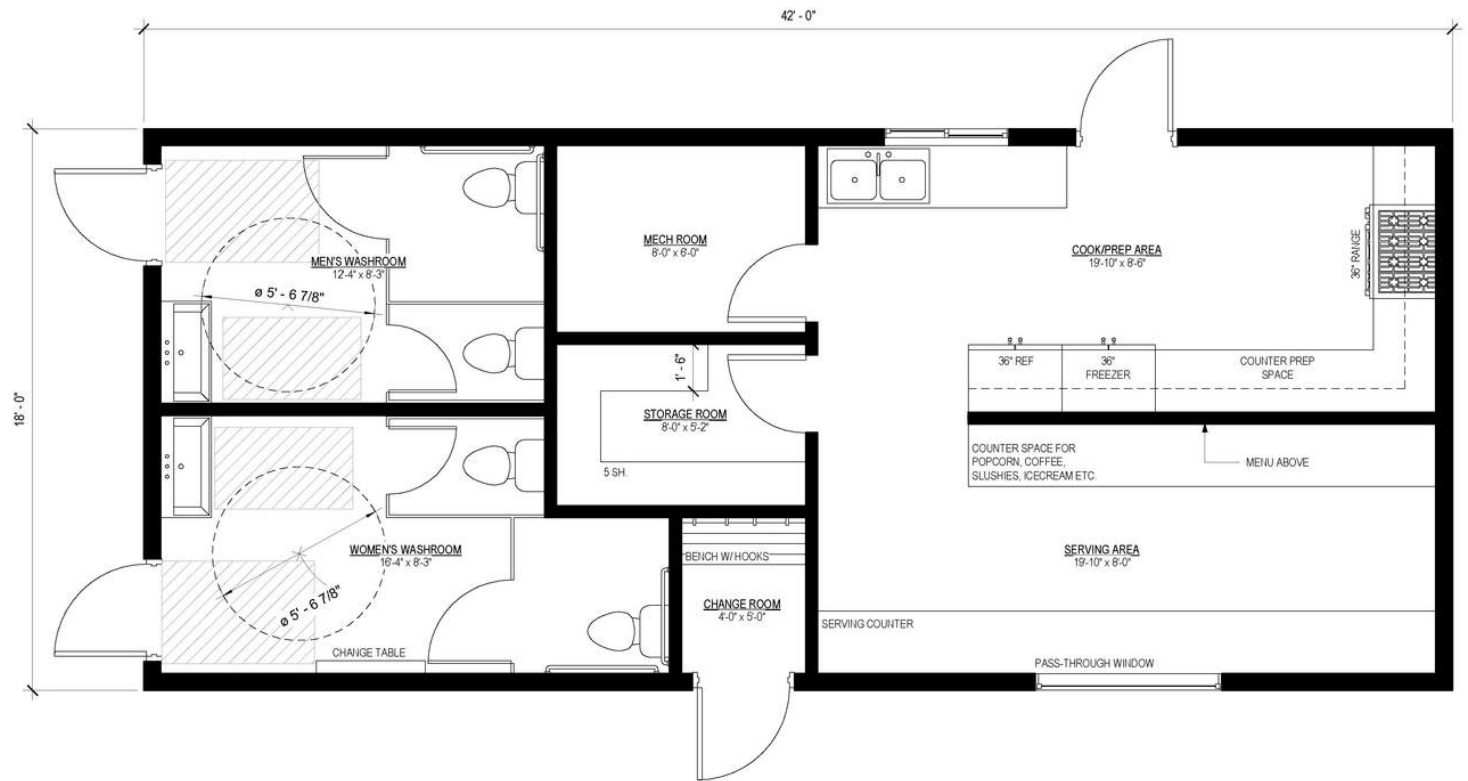
Barrier-Free
Men's Washroom
2 Stalls, 3 Urinals
Women's Washroom
4 Stalls



HERAUF
MODULAR

42' x 18'
756 sq. ft.

Barrier-Free
Men's Washroom
2 Stalls
Women's Washroom
2 Stalls
Canteen
Change Room



HERAUF
MODULAR

Fast Turnaround



Quality

Professional

Trustworthy

Reliable

Innovative

Versatile Portable Washrooms

Industrial

- **Industrial Washroom and Shower Units** In the fast-paced industrial sector, efficiency and durability are paramount. Our modular washroom and shower units are engineered to withstand the rigorous demands of industrial environments. Equipped with robust materials and easy-to-clean surfaces, they provide a practical and hygienic solution for factories, warehouses, and production facilities. Enhance worker satisfaction and productivity with facilities that can be deployed rapidly and maintained with minimal downtime.

Parks & Recreation

- **Parks & Recreation Washroom and Shower Units** Enhance the visitor experience in parks and recreational areas with our modular washroom and shower units. Ideal for locations with high foot traffic or limited infrastructure, these units blend functionality with aesthetics to complement natural surroundings. Quick to install and environmentally friendly, they provide essential amenities for campgrounds, public beaches, and community parks, ensuring accessibility and cleanliness to keep your landscapes pristine and your visitors happy.

Commercial

- Our modular washroom and shower units bring a blend of style and functionality to commercial spaces such as retail complexes, office buildings, and event venues. With customizable designs to match corporate aesthetics, they offer a cost-effective solution for managing facilities during renovations or peak usage times. Herauf Modular promises a seamless integration and rapid deployment, minimizing disruption to daily operations.

Agricultural

- **Agricultural Washroom and Shower Units** Agriculture demands resilience, and our modular washroom and shower units are built to serve. Designed to cater to the unique needs of farms, vineyards, and agricultural facilities, these units offer convenience and comfort in remote or rural settings. Weather-resistant and easily transportable, they can be placed in field locations to support seasonal workers during harvests or daily operations, ensuring compliance with health standards and improving on-site hygiene.



Quality

Professional

Trustworthy

Reliable

Innovative



Foundations

When building a prefab modular home in Canada, the foundation is critical to the stability and longevity of the structure. The right foundation depends on site-specific factors like soil type, climate, function, and budget. Built Prefab modular homes are designed to be placed on a variety of foundation types, ensuring flexibility and durability to meet your needs.

At Herauf Modular we offer engineered steel skids, adjustable jack stands, grade beams and Piles.

Herauf Engineered Steel Skid

Choosing the engineered steel skid foundation with your HERAUF unit is truly the 'all in one' option, allowing for minimal site prep, ideal for easy relocation and no anchoring is required. Your Herauf unit can be placed on any level surface. and can be relocated on any surface.

Adjustable Jack Stands - Wood Cribbing

Engineered free standing jack stands, fast install and easy adjustments, anchoring may apply. Adjustable Jack Stands adapt easily to local site conditions, Jack Stands are designed by our engineers to be installed under the main beams of the home sections. Jack Stands are set on square footers or pads on the ground to spread the load from a pier over a larger area, making a more stable base. The square pad footers may be concrete, either poured in place or precast, and preservative-treated wood. The spacing of the piers and the allowable bearing capacity of the soil determine the size of the footer or pad. The piers typically vary depending on home design, local soil characteristics, and roof snow load.

Grade Beam - Crawl Space - Foundation - Slab on Grade - Full Basement

This option serves great utility providing you access to the underside of your home and offering insulation and protection from the elements. Much like a basement, a crawl space is created by excavating the appropriate area, pouring concrete piles or footings and then placing the grade beam foundation and floor. Once completed the home is craned onto the crawlspace and finished accordingly. Once completed all mechanical and electrical tie-ins are easily accessible under the building. A crawl space can be an economical solution to a basement and can even offer storage.

Helical Steel Piles - Concrete Piles

Piles are installed using a skid steer or similar machinery that simply turns the auger type pile into the ground until it reaches a tension specified by the engineer. Once all of the piles have been screwed in per plan, they are levelled off to laser precision. The screw pile method can be economical.

HERAUF MODULAR SPECIFICATIONS

Superior Construction

- 1/2" plywood - under floor structure
- Under floor structure metal cap
- Engineered 2 x 4 roof trusses @ 24" OC
- 2"x 4" Interior walls @ 24" OC
- 2"x 6" exterior walls @ 16" OC
- 2" x 10" floor Joists @16" OC
- 3/4" tongue & groove subfloor
- 7/16" wall & roof sheathing
- Rafter hurricane ties
- Insulation R - Value Floor R-32
- Insulation R - Value Walls R-24
- Insulation R - Value Roof R-60
- 6ml vapour barrier (CGSB)

Mechanical & Plumbing

- 30, 40 or 60 imperial gal water heater (pending use requirements)
- Natural gas on demand water heater (optional)
- Motion sensor / light controlled exhaust fans
- HRV (Heat Recovery Ventilator) supply & exhaust system (optional)
- 1 piece 4' shower c/w glass sliding doors (shower units only)
- 4" or 8" center set vanity sink
- ADA-compliant vanity faucets
- Low-flow toilet
- Washroom Accessible grab bars (optional)
- 5lb ABC fire extinguisher
- Self containment System 400, 600 , 800 Gallon (optional)

Electrical

- 100 or 200 Amp Electrical Panel (Standard)
- Electric forced fan wall heaters, baseboard heaters & thermostats
- 2 Exterior GFI receptacles
- 1.5" Conduit Raceway to electrical panel for future electrical service
- GFCI-protected receptacles in washroom
- AFCI circuit breakers
- 1 heat trace receptacle
- Smoke/Carbon Monoxide alarms
- Interior LED pot lights
- Exterior LED lights
- Solar Rough-in (optional)
- Exit door and battery back up exit lights

Maintenance Free Exteriors

- Vinyl Siding (Metal siding optional)
- Tyvek House wrap
- Pre-finished 12" soffit
- Pre-finished 6" fascia
- 36"-18 gauge primed steel insulated ext. door, expandable jamb, aluminium sill & commercial grade weatherstripping.
- 5" Eavestrough & downspouts
- Architectural Asphalt Shingles (Metal standing seam roof optional)

Interior Decor

- Custom floating vanity cabinets, laminate countertop and Hardware
- Commercial Lino Flooring
- Accessible compliant vanity, mirror, towel bars & toilet paper holders
- 4" rubber base
- PVC wall & ceiling panels and trims
- Commercial grade door hardware, locks & passage

Warranty & Certifications

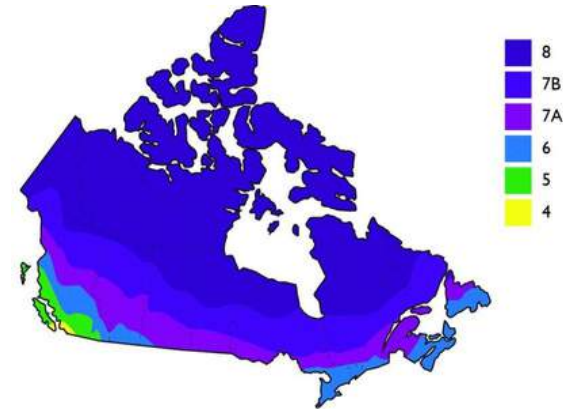
- 1 Year comprehensive
- 2 Year Mechanical
- 5 Year Envelope Seal



Our HERAUF product goes through Energy Efficiency modelling process focusing on our client's geographical region to best provide the highest level of energy efficiency, while creating comfortable living standards all year long. HERAUF products are designed and constructed to the highest level of "National Building Code", Sec on 9.36 (NBC) standard practice and delivered to meet up to Climate Zone 8. Fulfilling every region across Canada from Nova Scotia, Vancouver Island, Northwest Territories and Southern Prairies.



Phone: (306) 352-6617
Toll Free: 1-877-352-6617



Herauf Modular employed Robinson Residential Design Inc. to run test models for residential building prototypes and confirm with certainty their energy compliance. Multiple rounds of testing were completed using ANSI/ASHRAE compliant software, Hot2000.

Robinson Residential Design, hereby confirms the current specifications Herauf Modular provided for building envelope, mechanical equipment, window & doors – for each offered residential type building, meet the requirements of the 2015 National Building Code of Canada, Division B, Sec on 9.36 energy modeling requirements of Zones 6, 7A, 7B & 8.

If you have further questions pertaining to the information supplied, or if you need further verification of this letter, please contact Robinson Residential Design using the contact information listed.

Sincerely, Faith Zwozdesky Senior Architectural
Technologist/ Energy Consultant Robinson
Residential Design Inc.

Faith Zwozdesky



Sustainable Energy Solutions Solar Power

Quality

Professional

Trustworthy

Reliable

Innovative



A Sustainable Solution for Today and Tomorrow

Reliable Renewable Energy

Harness solar power for consistent, low-cost energy. Smart technology manages your energy supply, ensuring reliability in all conditions.

Economic & Environmental Gains

Reduce operational costs with significant tax incentives and lower energy bills. Reinvest savings in your community and sustainability projects.

Resilient Operations

Our advanced solar solutions guarantee uninterrupted power, supporting critical systems even during outages. Maintain safety and productivity with ease.

Invest in Sustainability

Choose Herauf Modular's innovative solar solutions. Meet rigorous standards while securing energy independence and reducing environmental impact.

Tax Incentives

Businesses and residents investing in solar, battery energy storage, geothermal, and micro-grid technologies can benefit from the various tax incentive programs in Canada.



Ask us about our solar options for long-lasting community development. Together, we can build a greener tomorrow.



Thank you for Considering Herauf Modular

Quality

Professional

Trustworthy

Reliable

Innovative



Connect with us for more info :



info@Heraufmodular.com



Heraufmodular.com



Heraufenterprises.com

