

Technical Study Group  
Puerto Rico  
April 2026

Verbal Report : EcoElectrica







Storm-water retention pond

Future LNG storage tank

Storm-water mitigation pond

Peerless Oil & Chemicals Inc

Desalination units

LNG storage

Flare

Cooling tower

Control room

Steam-turbine building

Gas turbines and HRSGs

Switchyard

Propane

Distillate storage

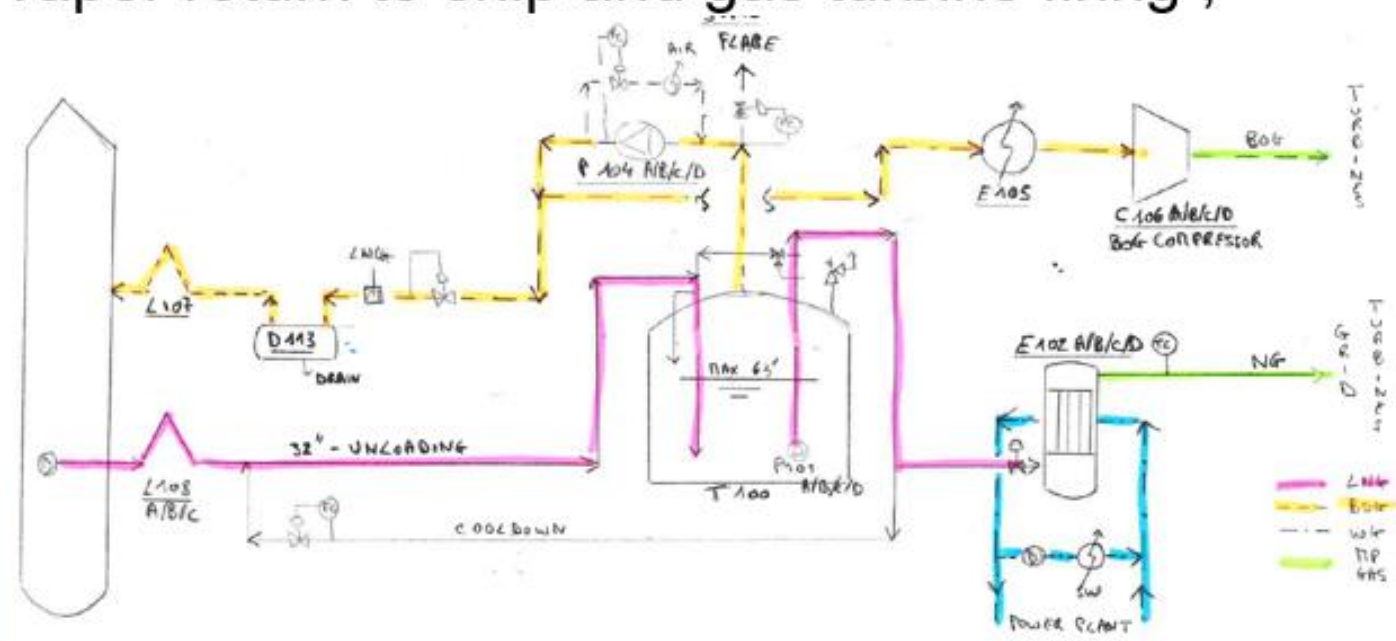
Admin, engineering offices

LNG storage



# EcoEléctrica Background – LNG Facility

- A marine terminal with a pier for unloading 138,000 m<sup>3</sup> LNG tankers ;
- A 550 m long trestle with a 32" unloading line equipped with expansion bellows ;
- A single 159,000 m<sup>3</sup> double containment LNG tank, with in-tank medium pressure LNG pumps ;
- An LNG vaporization system with (3+1) vertical shell and tube vaporizers, a water glycol closed loop and a sea water open loop – 279 mmscfd nominal (350 peak)
- Blowers and BOG compressors for vapor return to ship and gas turbine firing ;
- Truck loading station  
(2 bays in 2022).



**L107/L108**  
 UNLOADING  
 ARNS

**P104**  
 GAS BLOWER

**T100/P101**  
 - LNG STORAGE  
 TANK  
 - LNG SENDOUT PUMP

**E102**  
 W/LNG  
 VAPORIZERS

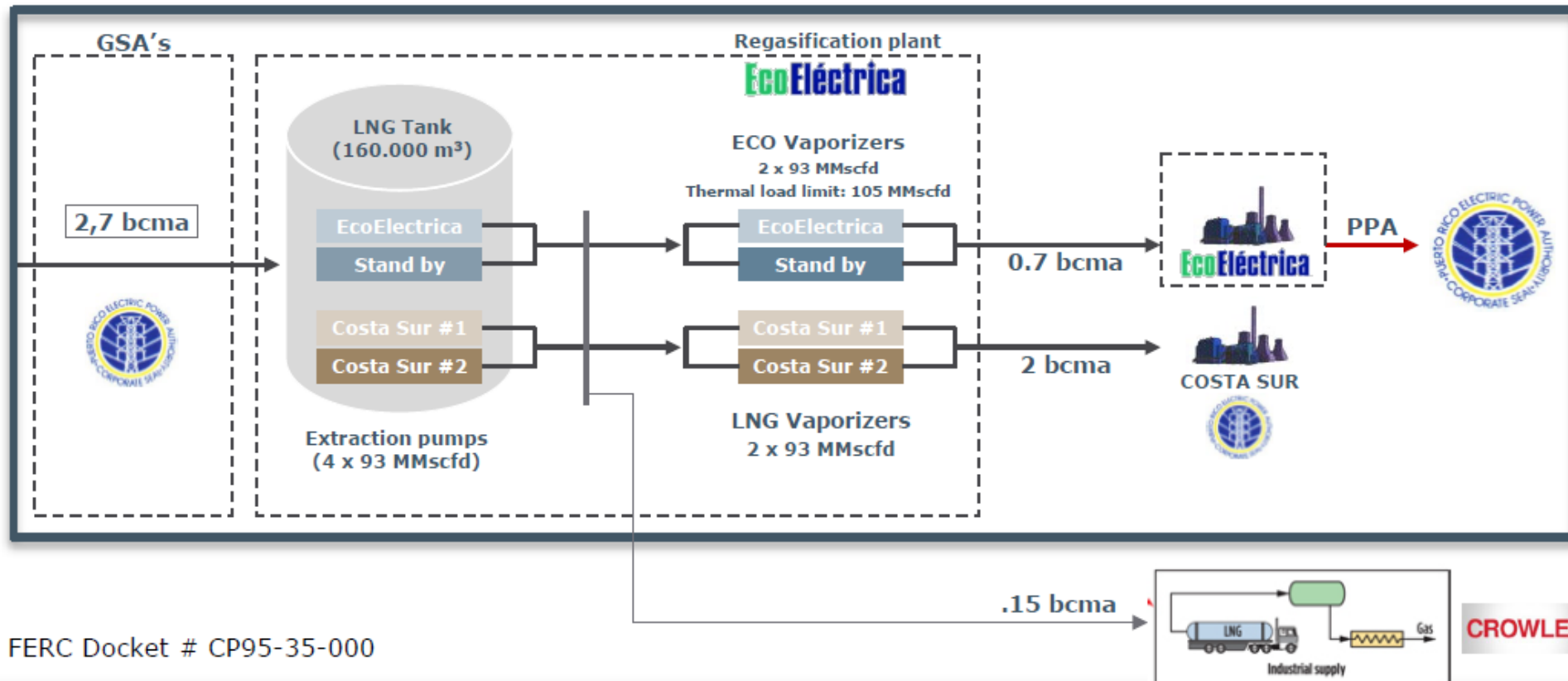
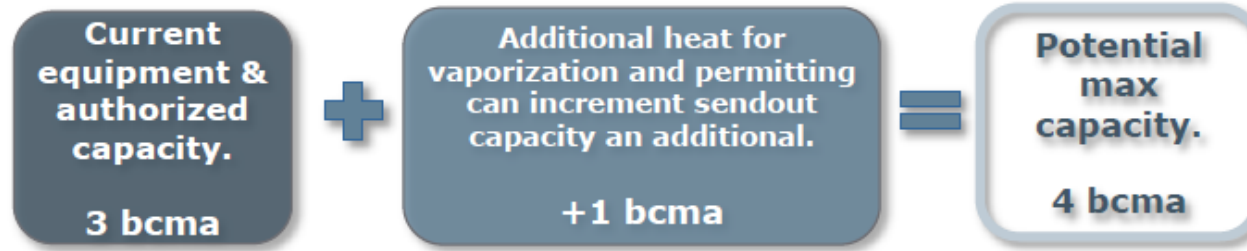
**PFD - 0**  
 ECO ELECTRICA  
 LNG TERMINAL  
 CURRENT STATUS

# EcoEléctrica Background - Power Plant

- Combined-cycle power plant has a power output of 530 MW with
  - two combustion gas turbines (175 MW each) that use natural gas as a primary fuel, ULSDO or LPG as back-up fuel ;
  - the exhausts from the combustion turbines is routed through heat recovery steam generators (HRSGs) to produce steam.
  - The steam produced in the HRSG is routed to a 215-MW rated steam turbine generator
- Operations began in 1999 (power) & 2000 (LNG)
- In 2012, steam boilers of Units 5&6 of the nearby PREPA power plant have been converted from HFO to natural gas (2 x 410 MW)



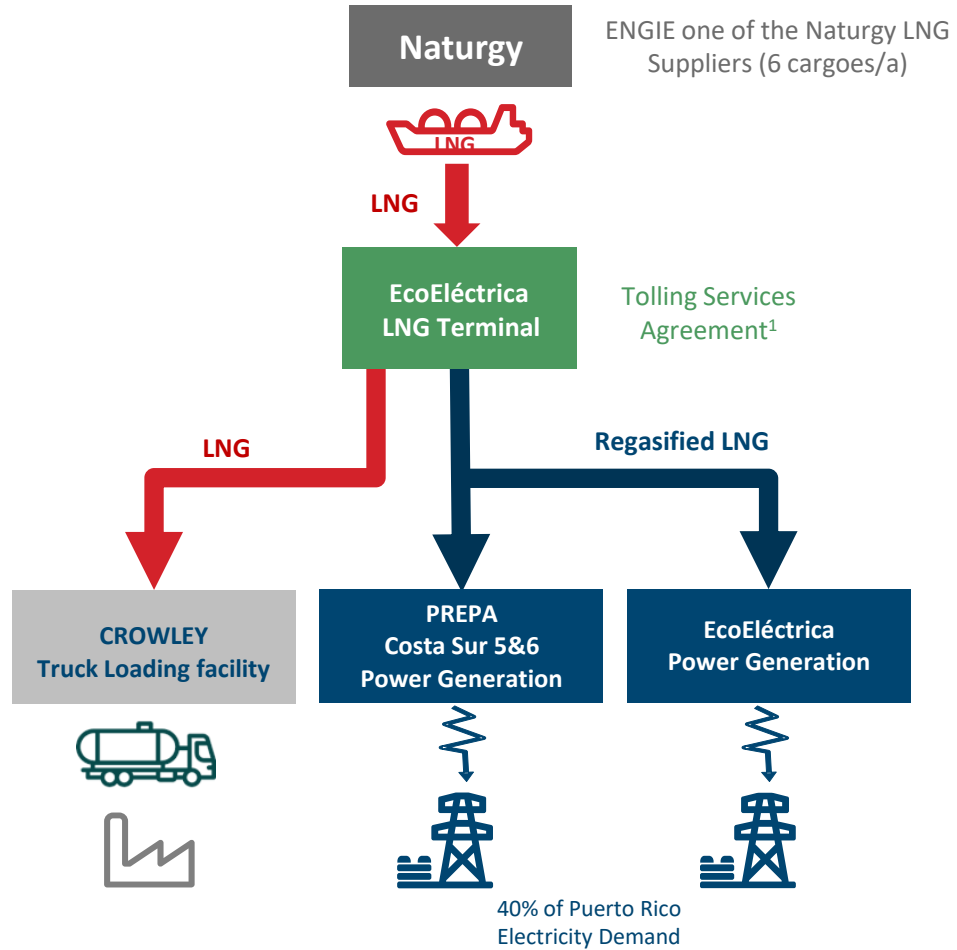
**LNG Terminal Capacity** – with existing equipment and permits, sendout max capacity is at 3 bcma. Current combined utilization by EcoElectrica, TLF and PREPA Costa Sur is at ~ 1.7 bcma (2025). Sendout capacity beyond 3bcma can be achieved with minor terminal modifications and permitting.





# LNG supply to Puerto Rico

## Stakeholders in EcoEléctrica LNG Terminal



Naturgy has an active participation in the energy market in Puerto Rico.  
It is the main LNG importer in the island and the only with import capacity in Peñuelas (EcoEléctrica LNG Terminal)

<sup>1</sup>Tolling services provided by EcoEléctrica include unloading storage regasification and transportation.

85 People + 36 contractors (17 security / 10 mechanics / 9 others)



**EcoEléctrica Organization Chart**  
**December 2025**  
**Headcount = 85**

