



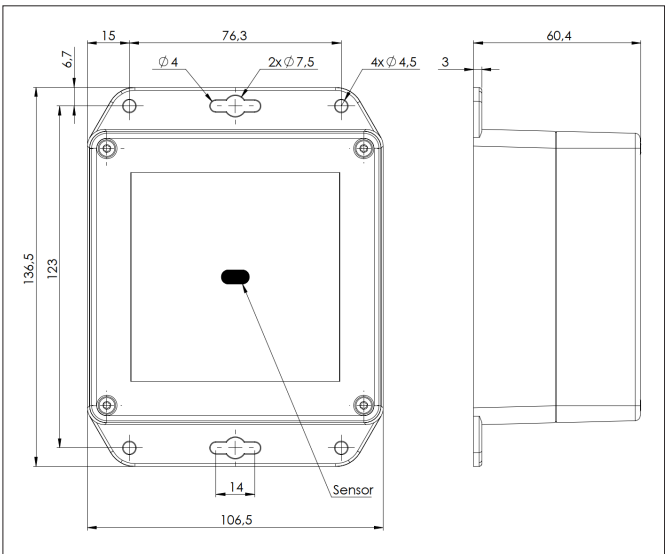
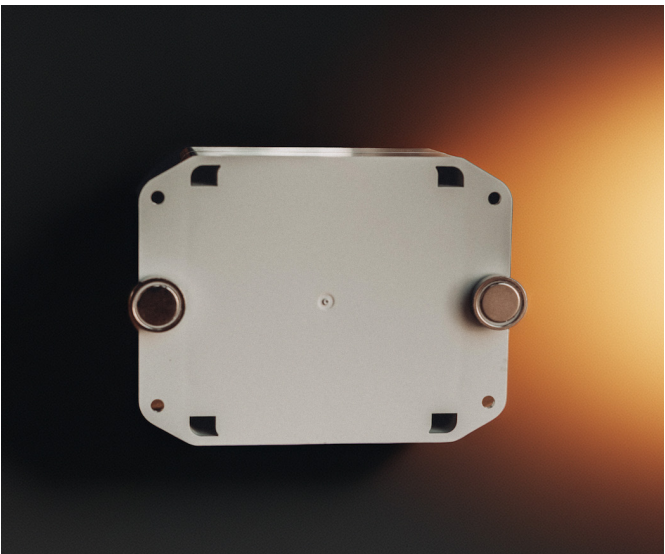
Description

The SMAVOO Short Range sensor is a compact distance sensor that measures up to 4 meters, enabling reliable load-carrier and box counting as well as material-presence detection. It ensures continuous stock monitoring and can automatically trigger material reordering when required. With its robust design, it

integrates effortlessly into existing setups, helping streamline material flow and reduce downtime. Its accurate short-range detection supports repeatable performance even in warehouse environments. Hybrid connectivity (WiFi & LoRaWAN) ensures reliable integration across diverse industrial operations.

Key Features

- | | | | |
|-----|------------------------------------|-----|--|
| 01. | Distance Measuring up to 4 meters | 03. | Point or Area Measurement and AGV Ready |
| 02. | Robust Enclosure & Easy to Install | 04. | Long Battery Life or Optional External Power Connector |



Enclosure	Dimensions	136,5 mm x 106,5 mm x 60,4 mm
	Material & Color	ABS, light grey
	Installation	Mounting via housing flanges, optional magnetic mount
Power Management	Power Supply	2x ER34615 lithium batteries
	Lifetime	Up to 5 years
Temperature Regulations	Operating Temperature	-10 °C to +40 °C
	Ingress Protection (IP)	IP40
Quality & Compliance	Certifications	CE
	Warranty	24 months
Device Functionality	Distance Measuring	Up to 4 meters, optional multi zone ranging
	Button	Button with RGB LED
	External Connector	Service interface Optional M12 external power connector

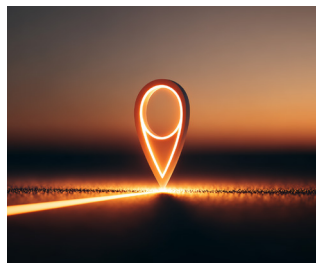


ONE.CORE Function

SMAVOO ONE.CORE is the heart of the SMAVOO ecosystem — a fully modular sensor platform designed specifically for demanding industrial environments. Unlike conventional IoT devices with fixed feature sets, ONE.CORE adapts precisely to your requirements through interchangeable communication modules, configurable sensor interfaces, and edge-computing

capabilities. Born out of frustration with proprietary systems that lock companies into inflexible technologies, ONE.CORE is built on open standards and a future-proof design. Start with exactly what you need today and expand the platform seamlessly as your business grows and evolves naturally — all without having to replace your hardware investment.

ONE.CORE Key Features

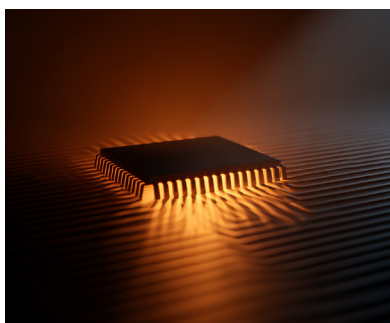


01.

Modular Communication:
WiFi, LoRaWAN, Bluetooth
Low Energy (BLE)

02.

Plug-and-Play Interface for
Sensors (RFID, Barcode,
Environment, Movement)



03.

Designed for Edge
Intelligence, Buffering,
and Fail-Safety

ONE.CORE Multiband

Core.CPU

240 MHz Dual Core CPU

ADC voltage monitoring (battery)

520 KB SRAM, 4MB flash

Secure boot with flash encryption

Hardware encryption (AES, RSA, ECC, HASH)

Ultra low power consumption

Core.WiFi

WPA2 Enterprise (EAP-TLS, EAP-TTLS, EAP-PEAP, EAP-FAST)

IEEE 802.11 b/g/n, up to 150 Mbps

X.509 certifications (4096-bit)

Firmware upgrade via Over-the-Air Update (OTA)

Core.LoRaWAN
(optional)

CN470/IN865/EU868/RU864/US915/AU915/KR920/AS923-1&2&3&4

FSK, GFSK, MSK, GMSK, LoRaTM and OOK Modulation

127 dB Dynamic Range RSSI

Over the Air Activation (OTAA)

Activation by Personalization
(ABP)Advanced Encryption
Standard (AES)

-144 dBm sensitivity

IEEE802.15.4g

Core.BLE
(optional Core.PDI)

Compliant with Bluetooth v4.2 BR/EDR and Bluetooth LE specifications

NZIF receiver with -94 dBm Bluetooth LE sensitivity

Adaptive Frequency Hopping (AFH)

Bluetooth 4.2 BR/EDR and Bluetooth LE dual mode controller

Multi-connections in Classic Bluetooth and Bluetooth LE

Simultaneous advertising and scanning