



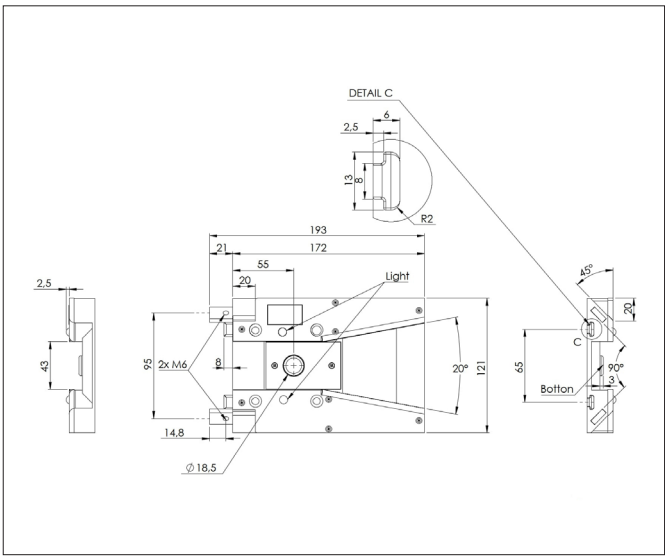
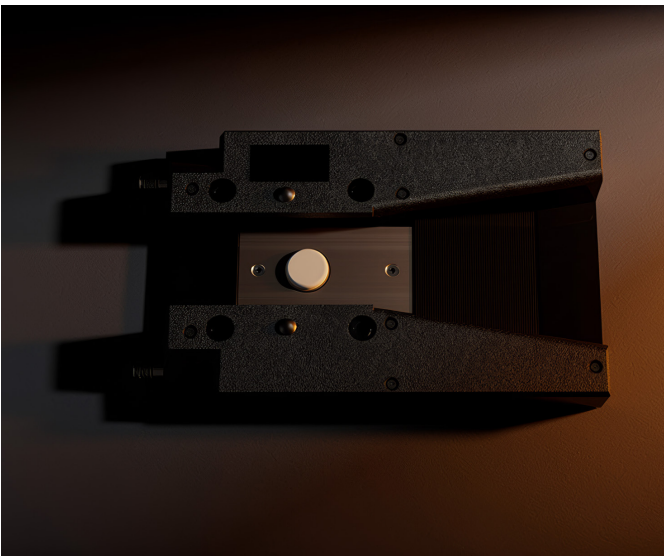
Description

The SMAVOO Trolley sensor is designed to streamline warehouse logistics by monitoring the movement and positioning of trolleys. It can detect the absence or presence of a trolley and count how many trolleys have been inserted. This enables automated tracking

and optimization of material flow, ensuring efficient utilization of warehouse space. Additionally, its hybrid communication options (WiFi & LoRaWAN) provide flexible connectivity for various industrial environments during all operational processes.

Key Features

- | | | | |
|-----|----------------------------------|-----|---|
| 01. | Real-Time Trolley Visibility | 03. | Automation-Ready Connectivity |
| 02. | Compact. Durable. Plug-and-Play. | 04. | Smooth Roll Detection with Optical Feedback |
-



Enclosure	Dimensions	193 mm x 121 mm x 23 mm
	Material & Color	Synthetic material, black
	Installation	Insertion into a T-slot rail, floor mounting via mounting tabs
Power Management	Power Supply	2x AA batteries
	Lifetime	Up to one year with 30 actuations per day
Temperature Regulations	Operating Temperature	-10 °C to +40 °C
	Ingress Protection (IP)	IP40
Quality & Compliance	Certifications	CE
	Warranty	24 months
Device Functionality	LED	2x RGB LEDs
	Button	Wheel detector
	External Connector	Service interface

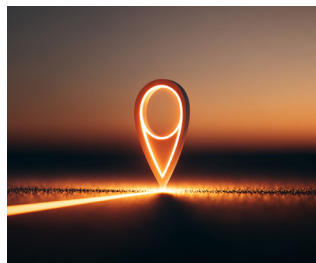


ONE.CORE Function

SMAVOO ONE.CORE is the heart of the SMAVOO ecosystem — a fully modular sensor platform designed specifically for demanding industrial environments. Unlike conventional IoT devices with fixed feature sets, ONE.CORE adapts precisely to your requirements through interchangeable communication modules, configurable sensor interfaces, and edge-computing

capabilities. Born out of frustration with proprietary systems that lock companies into inflexible technologies, ONE.CORE is built on open standards and a future-proof design. Start with exactly what you need today and expand the platform seamlessly as your business grows and evolves naturally — all without having to replace your hardware investment.

ONE.CORE Key Features

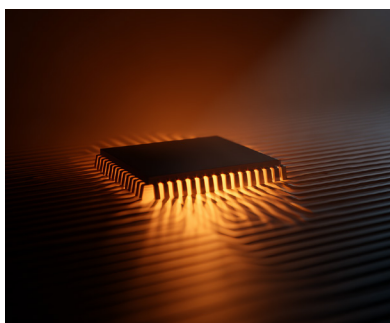


01.

Modular Communication:
WiFi, LoRaWAN, Bluetooth
Low Energy (BLE)

02.

Plug-and-Play Interface for
Sensors (RFID, Barcode,
Environment, Movement)



03.

Designed for Edge
Intelligence, Buffering,
and Fail-Safety

ONE.CORE Multiband

Core.CPU	240 MHz Dual Core CPU	ADC voltage monitoring (battery)
	520 KB SRAM, 4MB flash	Secure boot with flash encryption
	Hardware encryption (AES, RSA, ECC, HASH)	
	Ultra low power consumption	
Core.WiFi	WPA2 Enterprise (EAP-TLS, EAP-TTLS, EAP-PEAP, EAP-FAST)	
	IEEE 802.11 b/g/n, up to 150 Mbps	
	X.509 certifications (4096-bit)	
	Firmware upgrade via Over-the-Air Update (OTA)	
Core.LoRaWAN (optional)	CN470/IN865/EU868/RU864/US915/AU915/KR920/AS923-1&2&3&4	
	FSK, GFSK, MSK, GMSK, LoRaTM and OOK Modulation	
	127 dB Dynamic Range RSSI	Over the Air Activation (OTAA)
	Activation by Personalization (ABP)	Advanced Encryption Standard (AES)
	-144 dBm sensitivity	IEEE802.15.4g
Core.BLE (optional Core.PDI)	Compliant with Bluetooth v4.2 BR/EDR and Bluetooth LE specifications	
	NZIF receiver with -94 dBm Bluetooth LE sensitivity	
	Adaptive Frequency Hopping (AFH)	
	Bluetooth 4.2 BR/EDR and Bluetooth LE dual mode controller	
	Multi-connections in Classic Bluetooth and Bluetooth LE	
	Simultaneous advertising and scanning	