



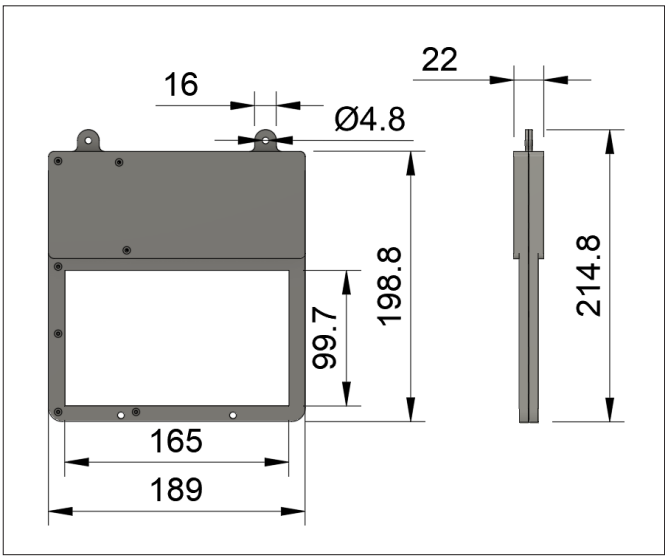
Description

The SMAVOO 7.5 Double Label is an innovative electronic labeling solution designed for large load carriers. Its dual-display design allows for independent configuration, displaying different data on each side, such as production and logistics information. This ensures seamless communication between

departments, reducing miscommunication and improving efficiency. The label can be wirelessly woken from sleep mode for updates without manual interaction. Additionally, its hybrid communication options (WiFi & LoRaWAN) provide flexible connectivity for various industrial environments.

Key Features

- | | |
|---|--|
| 01. Dual-Sided Display.
Unified Flow. | 03. Durable, Lightweight,
Customizable Display Design |
| 02. Ultra-Efficient,
Paperless Clarity | 04. Built-In OneCore Connector
for New Features |



Enclosure	Dimensions	214,8 mm x 189 mm x 22 mm
	Material & Color	ABS, black
	Installation	Mounting via hanging tabs
Power Management	Power Supply	2x AA batteries
	Lifetime	Up to 4 years with one refresh per day
Temperature Regulations	Operating Temperature	0 °C to +40 °C
	Ingress Protection (IP)	IP40
Quality & Compliance	Certifications	CE
	Warranty	24 months
Device Functionality	Display	Dual-sided 7.5" e-paper displays
	External Connector	Service interface

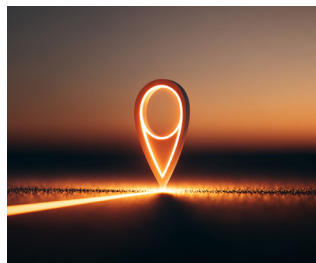


ONE.CORE Function

SMAVOO ONE.CORE is the heart of the SMAVOO ecosystem — a fully modular sensor platform designed specifically for demanding industrial environments. Unlike conventional IoT devices with fixed feature sets, ONE.CORE adapts precisely to your requirements through interchangeable communication modules, configurable sensor interfaces, and edge-computing

capabilities. Born out of frustration with proprietary systems that lock companies into inflexible technologies, ONE.CORE is built on open standards and a future-proof design. Start with exactly what you need today and expand the platform seamlessly as your business grows and evolves naturally — all without having to replace your hardware investment.

ONE.CORE Key Features

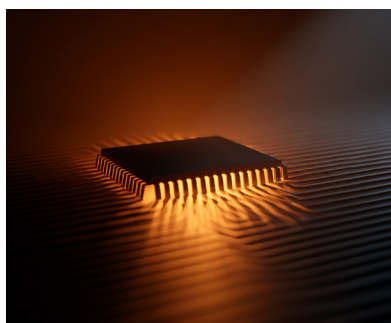


01.

Modular Communication:
WiFi, LoRaWAN, Bluetooth
Low Energy (BLE)

02.

Plug-and-Play Interface for
Sensors (RFID, Barcode,
Environment, Movement)



03.

Designed for Edge
Intelligence, Buffering,
and Fail-Safety

ONE.CORE Multiband

Core.CPU	240 MHz Dual Core CPU	ADC voltage monitoring (battery)
	520 KB SRAM, 4MB flash	Secure boot with flash encryption
	Hardware encryption (AES, RSA, ECC, HASH)	
	Ultra low power consumption	

Core.WiFi	WPA2 Enterprise (EAP-TLS, EAP-TTLS, EAP-PEAP, EAP-FAST)
	IEEE 802.11 b/g/n, up to 150 Mbps
	X.509 certifications (4096-bit)
	Firmware upgrade via Over-the-Air Update (OTA)

Core.LoRaWAN (optional)	CN470/IN865/EU868/RU864/US915/AU915/KR920/AS923-1&2&3&4	
	FSK, GFSK, MSK, GMSK, LoRaTM and OOK Modulation	
	127 dB Dynamic Range RSSI	Over the Air Activation (OTAA)
	Activation by Personalization (ABP)	Advanced Encryption Standard (AES)
	-144 dBm sensitivity	IEEE802.15.4g

Core.BLE (optional Core.PDI)	Compliant with Bluetooth v4.2 BR/EDR and Bluetooth LE specifications	
	NZIF receiver with -94 dBm Bluetooth LE sensitivity	
	Adaptive Frequency Hopping (AFH)	
	Bluetooth 4.2 BR/EDR and Bluetooth LE dual mode controller	
	Multi-connections in Classic Bluetooth and Bluetooth LE	
	Simultaneous advertising and scanning	