



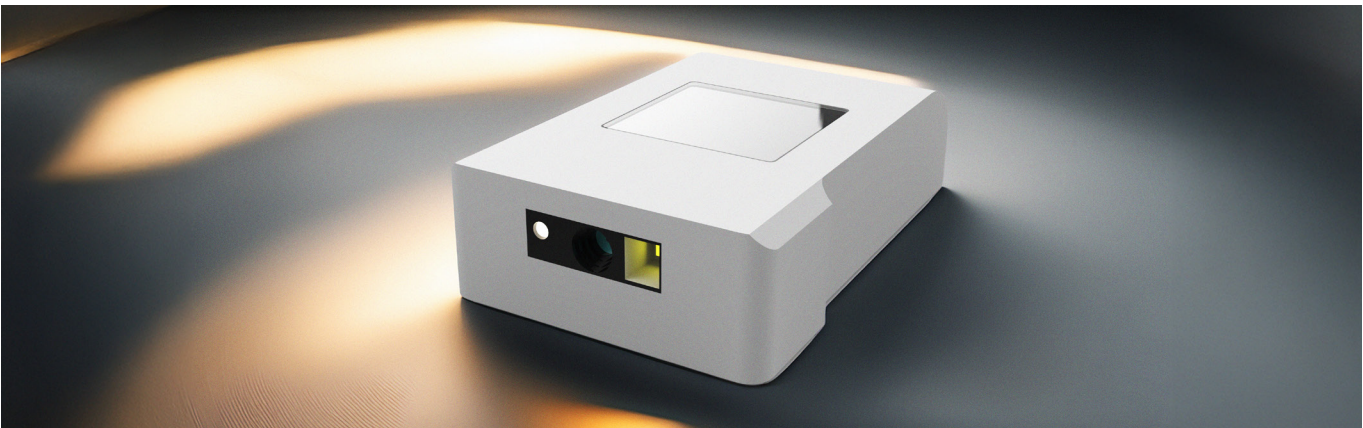
Description

The SMAVOO Wearable Scanner is designed for hands-free, ultra-fast barcode scanning in logistics and inventory management. The 1.5-inch display provides instant feedback, improving workflow efficiency. Its ergonomic design enhances operator comfort,

making it an ideal solution for high-paced industrial environments. Additionally, its hybrid communication options (WiFi & LoRaWAN) provide flexible connectivity for various industrial environments, seamlessly supporting daily operations.

Key Features

- | | | | |
|-----|--------------------------------|-----|-----------------------------|
| 01. | Fast Refresh Under One Second | 03. | Hands-Free, Always On |
| 02. | Accurate and Reliable Scanning | 04. | Compact, Lightweight Design |



Enclosure	Dimensions	78 mm x 50 mm x 21 mm
	Material & Color	Synthetic material, white
	Installation	Hand-mounted barcode scanner
Power Management	Power Supply	Lithium-ion battery (rechargeable)
	Battery Handling	Changeable lithium-ion battery with external charging option
Temperature Regulations	Operating Temperature	0 °C to +40 °C
	Ingress Protection (IP)	IP44
Quality & Compliance	Certifications	CE
	Warranty	24 months
Device Functionality	Display	1,5" e-paper display, full refresh time under one second
	Button	1x User button
	External Connector	Service interface
	Scan Engine	Barcode detection up to 50 centimeters
	Radio	Wi-Fi 24 and 5 GHz, BLE, Wake-up on radio
	Actuators	Piezo buzzer