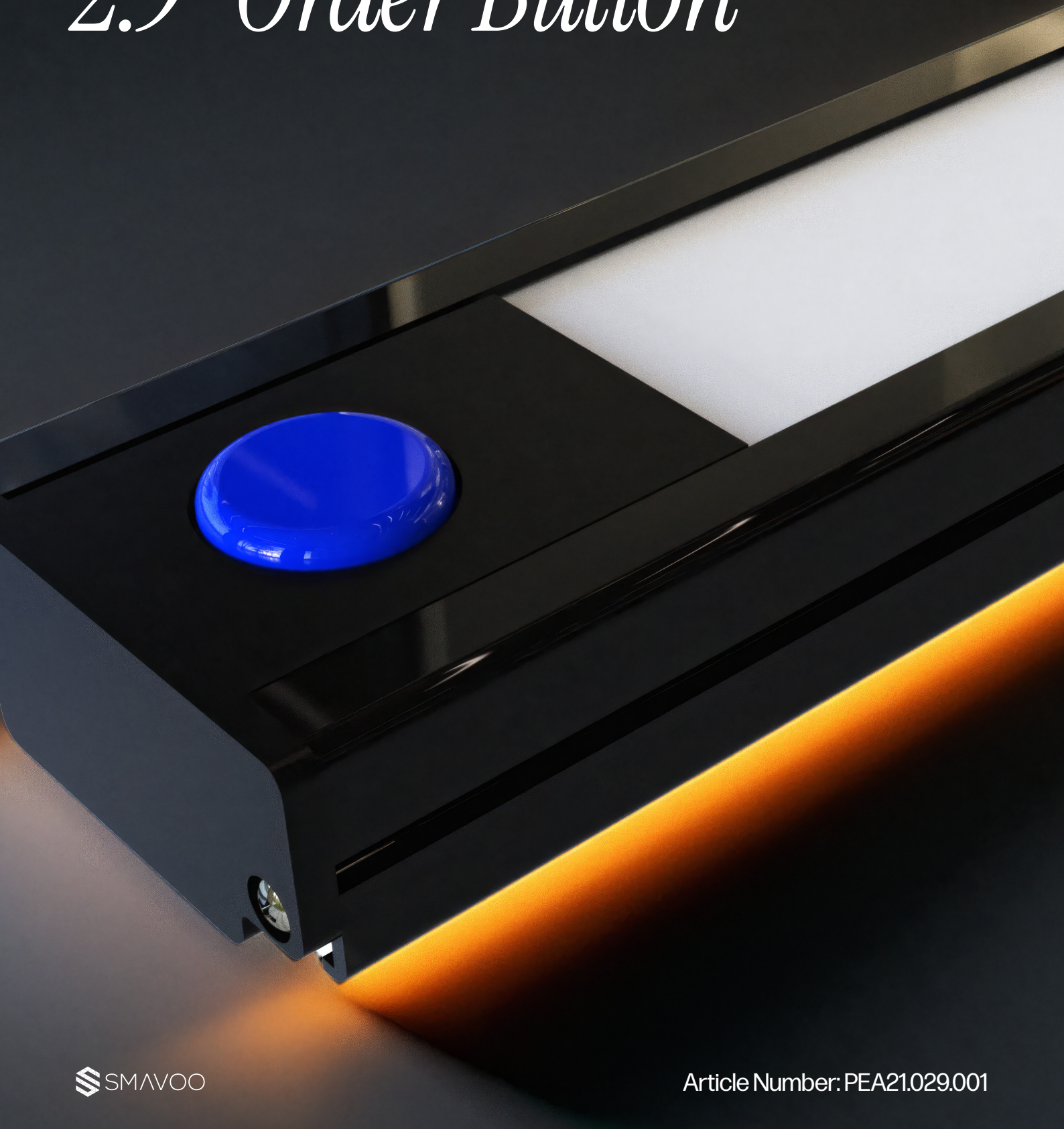
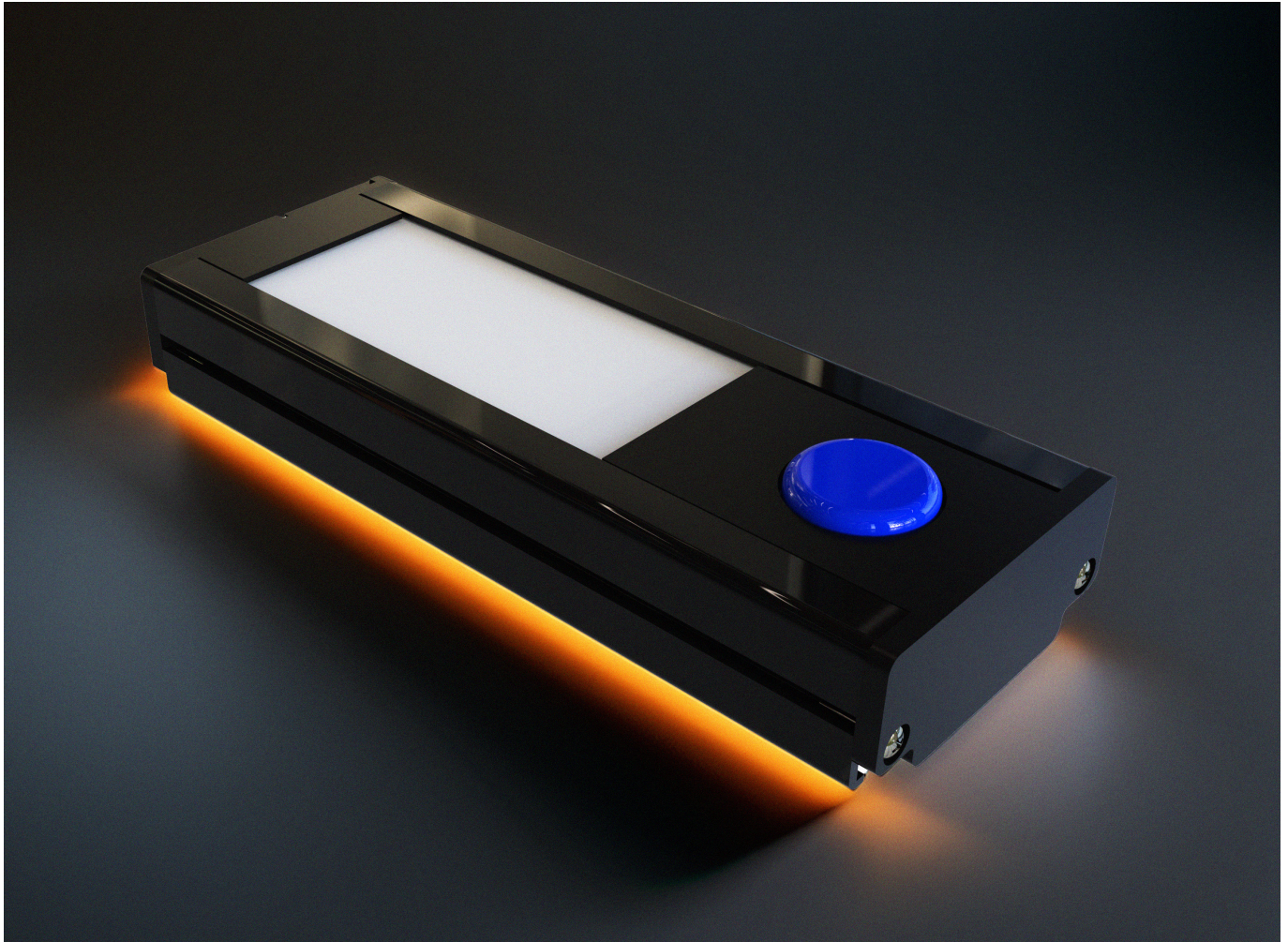


Instant *Reordering*, Endless *Efficiency*

SMAVOO

2.9" Order Button





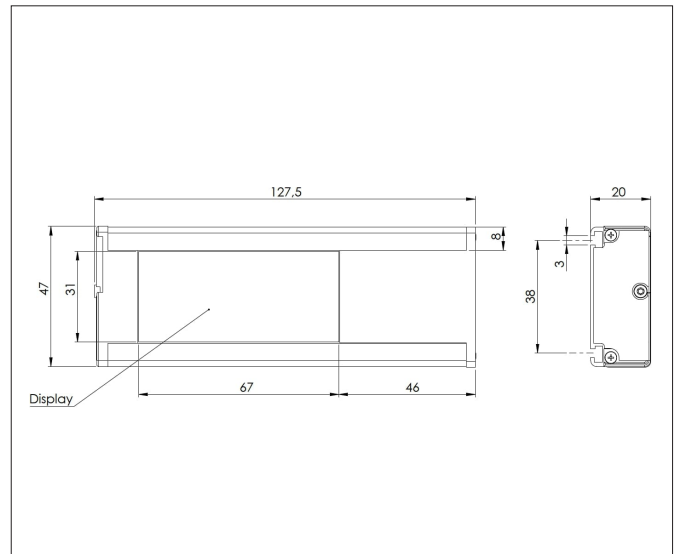
Description

The SMAVOO Order Button is a 2.9-inch label with a configurable button and a multicolor RGB LED, distinguished by an ultra-fast refresh rate. The content on the e-paper display (EPD) can be changed dynamically and refreshes in under one second. Equipped with an ultra-low-power chipset, the device can be awakened via radio signal, extending battery life

to up to four years. The integrated buzzer makes it ideal for material reordering, AGV integration, and semi-automated workflows where operators trigger actions at the push of a button. Its hybrid communication options (WiFi & LoRaWAN) also ensure flexible connectivity across diverse industrial environments, when and where needed.

Key Features

01. Customizable Display Design, Fast Refresh Under One Second
02. Ultra Low Power, Long Runtime
03. Compact, Durable, Built to Last
04. Built-In OneCore Connector for New Features



Enclosure	Dimensions	127,5 mm x 47 mm x 20 mm
	Material & Color	Aluminium, ABS, black
	Installation	Wall mounting, 3M tape or screws, 4x M2.5 T-slot rail
Power Management	Power Supply	3x AAA batteries
	Lifetime	Up to 4 years with three refreshes per day
Temperature Regulations	Operating Temperature	0 °C to +40 °C
	Ingress Protection (IP)	IP40
Quality & Compliance	Certifications	CE
	Warranty	24 months
Device Functionality	Display	Black and white e-paper display, full refresh time under one second
	Button	Order button with RGB LED
	External Connector	Service interface

Use-Cases

Picking



The SMAVOO 2.9 Order Button combines a 2.9" e-paper display with a programmable button, making it ideal for picking and Kanban processes. At a pick face or shelf, it shows dynamic information such as part numbers or bin status and allows workers to confirm actions or request refills with a single press. Once a pick is completed, the button marks the task as done and the display instantly updates to show confirmation or the next task. In Kanban setups, pressing the button when a bin is empty triggers an automatic replenishment request, with clear visual feedback via display and LED. This eliminates paperwork, reduces delays and errors, and enables fast, intuitive interaction with the warehouse system directly at the point of work.

Transport



In transport and staging areas, the 2.9" Order Button connects human actions with automated logistics flows. At docks or buffers, workers press the button to signal that a pallet is ready for pickup or loading is complete. The request is sent instantly to the system, triggering forklifts or AGVs, while the e-paper display shows clear status updates such as "Pickup Requested" or "In Transit." LEDs provide immediate visual confirmation, preventing duplicate calls or uncertainty. On production lines, a full pallet can be signaled for removal with one press, and drivers can acknowledge pickup directly on the device. This replaces radio calls and manual coordination with a simple, traceable action that keeps material flowing smoothly and reduces idle time.

Production



On production lines, the SMAVOO 2.9 Order Button supports material replenishment and workflow confirmation at each station. When components run low, operators press the button to request refills instantly, with the display and LED confirming that help is on the way. This prevents workers from leaving their station or interrupting production. Once a batch is completed, another button action can signal that finished goods are ready for transport, triggering logistics automatically. All actions are logged and synchronized with production and inventory systems in real time. This lean, one-touch interaction minimizes line stoppages, replaces manual Kanban signals, and ensures materials and outputs move exactly when needed.

Frequently Asked Questions

How does the Order Button integrate with our existing workflow systems like WMS or ERP?

The Order Button seamlessly connects to existing systems through standard APIs and protocols. When pressed, it sends customized signals directly to your warehouse management system, ERP, or AGV control software. The device can be configured to trigger actions based on your workflow requirements – whether that's creating a purchase order, dispatching an AGV, or updating inventory levels. Integration is typically completed within hours, not days.

What's the difference between using the Order Button and traditional paper Kanban cards?

While paper Kanban cards require physical handling, scanning, and can be lost or forgotten, the Order Button provides instant digital confirmation with just one press. You get immediate visual feedback through the LED and e-paper display, automatic system updates, and a complete audit trail. There's no delay waiting for someone to process cards, and no risk of lost or damaged cards disrupting your workflow.

How customizable is the e-paper display, and can it show different information for different scenarios?

The 2.9" e-paper display is fully customizable through over-the-air updates. You can configure it to show part numbers, bin locations, order status, instructions, or any text/graphics relevant to your operation. The ultra-fast refresh (under 1 second) allows real-time status updates like „Order Sent,“ „AGV Dispatched,“ or „Replenishment Complete.“ Different button modes can trigger different displays and actions.

How does the multi-color RGB LED system work for visual confirmation?

The integrated RGB LED provides instant feedback when pressed—customizable to your workflow needs. For example, green might indicate a successful order, blue for AGV dispatched, red for error, or yellow for processing. This immediate visual confirmation ensures operators know their action was registered without needing to check a screen or wait for system response.

How does the hybrid connectivity (WiFi and LoRaWAN) benefit our operations?

The dual connectivity ensures continuous operation even in challenging industrial environments. If WiFi experiences interference or coverage gaps, the system automatically switches to LoRaWAN without interrupting operations. This failover protection is particularly valuable in large facilities, production areas with heavy machinery, or outdoor applications where reliable connectivity is crucial.

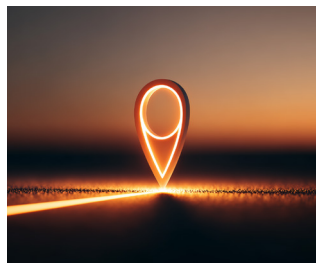


ONE.CORE *Function*

SMAVOO ONE.CORE is the heart of the SMAVOO ecosystem — a fully modular sensor platform designed specifically for demanding industrial environments. Unlike conventional IoT devices with fixed feature sets, ONE.CORE adapts precisely to your requirements through interchangeable communication modules, configurable sensor interfaces, and edge-computing

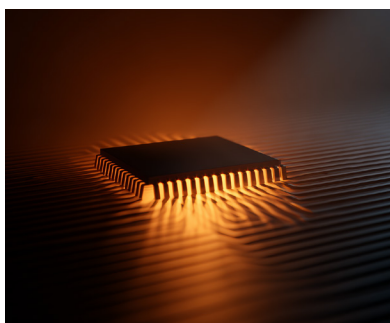
capabilities. Born out of frustration with proprietary systems that lock companies into inflexible technologies, ONE.CORE is built on open standards and a future-proof design. Start with exactly what you need today and expand the platform seamlessly as your business grows and evolves naturally — all without having to replace your hardware investment.

ONE.CORE *Key Features*



01.

Modular Communication:
WiFi, LoRaWAN, Bluetooth
Low Energy (BLE)



02.

Plug-and-Play Interface for
Sensors (RFID, Barcode,
Environment, Movement)

03.

Designed for Edge
Intelligence, Buffering,
and Fail-Safety

ONE.CORE *Multiband*

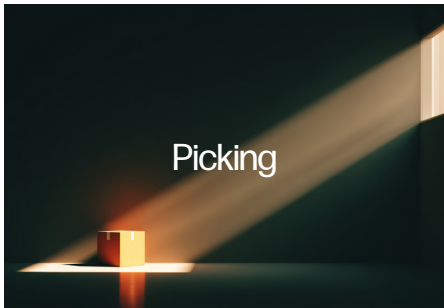
Core.CPU	240 MHz Dual Core CPU	ADC voltage monitoring (battery)
	520 KB SRAM, 4MB flash	Secure boot with flash encryption
	Hardware encryption (AES, RSA, ECC, HASH)	
	Ultra low power consumption	

Core.WiFi	WPA2 Enterprise (EAP-TLS, EAP-TTLS, EAP-PEAP, EAP-FAST)	
	IEEE 802.11 b/g/n, up to 150 Mbps	
	X.509 certifications (4096-bit)	
	Firmware upgrade via Over-the-Air Update (OTA)	

Core.LoRaWAN (optional)	CN470/IN865/EU868/RU864/US915/AU915/KR920/AS923-1&2&3&4	
	FSK, GFSK, MSK, GMSK, LoRaTM and OOK Modulation	
	127 dB Dynamic Range RSSI	Over the Air Activation (OTAA)
	Activation by Personalization (ABP)	Advanced Encryption Standard (AES)
	-144 dBm sensitivity	IEEE802.15.4g

Core.BLE (optional Core.PDI)	Compliant with Bluetooth v4.2 BR/EDR and Bluetooth LE specifications	
	NZIF receiver with -94 dBm Bluetooth LE sensitivity	
	Adaptive Frequency Hopping (AFH)	
	Bluetooth 4.2 BR/EDR and Bluetooth LE dual mode controller	
	Multi-connections in Classic Bluetooth and Bluetooth LE	
Simultaneous advertising and scanning		

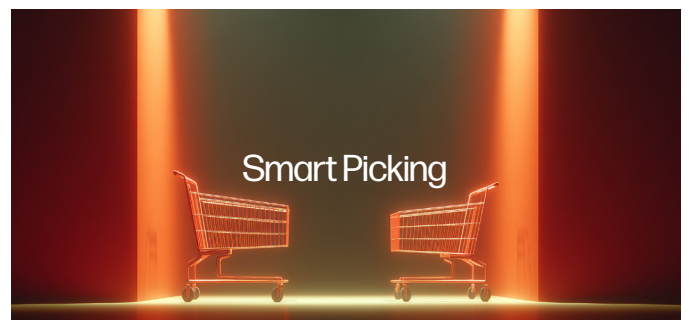
Material Flow



We're not here to bulldoze your workflow: Keep what works, ditch what doesn't. We plug in, make it smarter, and let you scale or pivot without rewriting your playbook. And because we're logistics people too, we know the pain of endless integration projects. We've

been there, done that, and built something better: Fast rollouts, real support, and partnerships that don't vanish after go-live. Our track record? Industry leaders trust us to keep them ahead - because we deliver the goods, not just the sales pitch.

Solutions



SMAVOO delivers modular intralogistics automation: hybrid tracking links RFID, GPS and indoor locating to give you real-time visibility of every asset, order and load carrier. Smart picking and reordering use digital picklists, wearables, e-paper labels and order buttons

to simplify picking and trigger replenishment — and AGV/AMR workflows connect it all into one seamless, data-driven material flow where our hard- and software solutions speak the language of your warehouse - from dock to dispatch, shift after shift, site after site.

Smart, Seamless and Scalable. Or *Simply SMAVVO.*



At SMAVVO, we believe in all-in-one-solutions: Hardware, Software & Service. We specialize in Industrial IoT (IIoT) solutions for production and logistics. Our expertise spans RFID technology, sensor networks, and software development with the goal

of creating modular systems that make operations efficient, transparent, and error-free. Our customized solutions help companies digitalize their processes and make smarter decisions through real-time tracking across all modern workflows.

Contact Us

Excited about the future? So are we, and we look forward to optimizing your processes together. Whether you're interested in a demo setup or just a casual introduction, you can reach us here.

General Enquiries

sales@smavoo.com
smavoo.com

Dr. Rouven-B. Wiegand

Managing Director
Phone: +49 511 515614 08