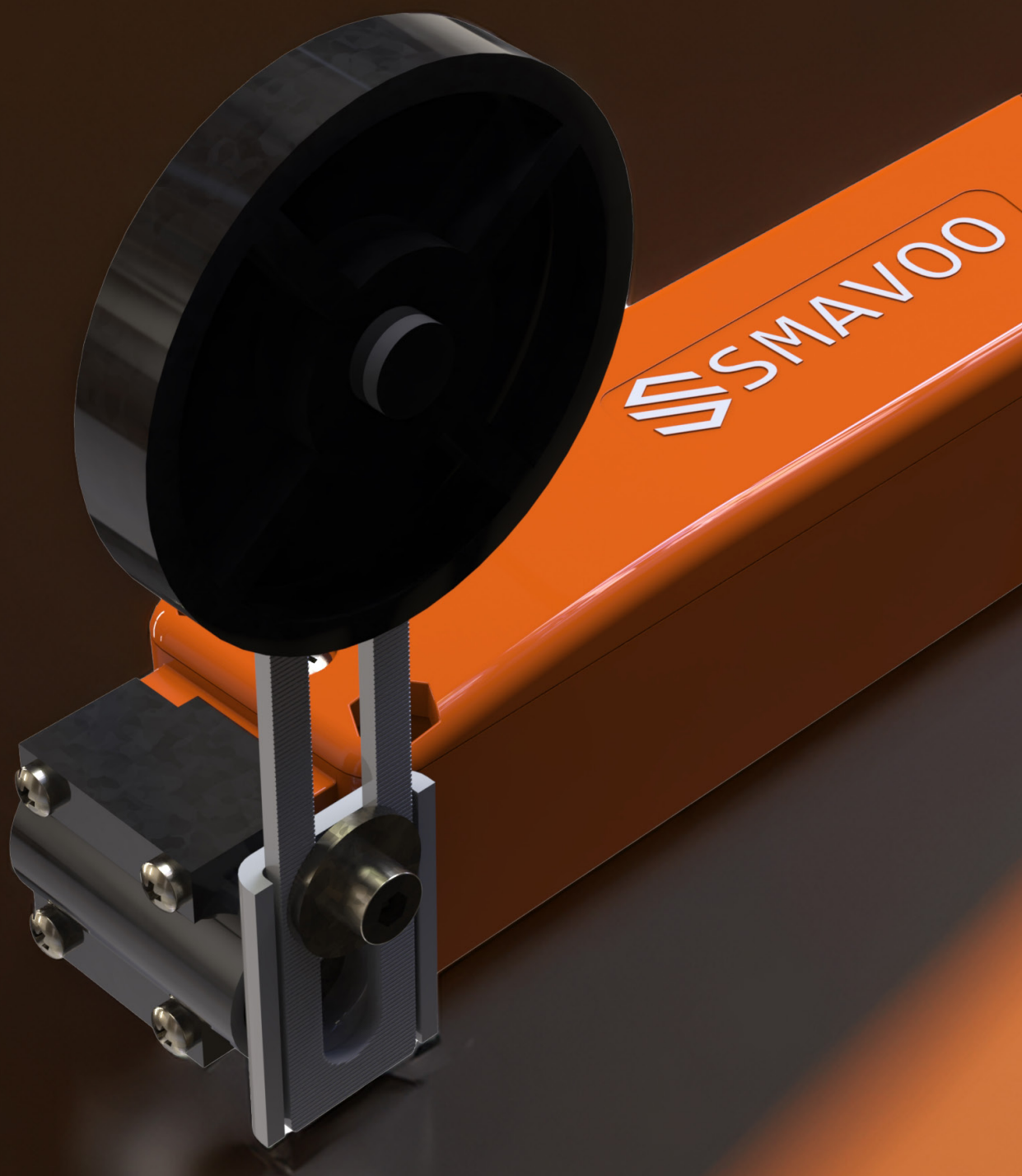


Lean Replenishment Starts *Here*

SMAVOO *Switch*





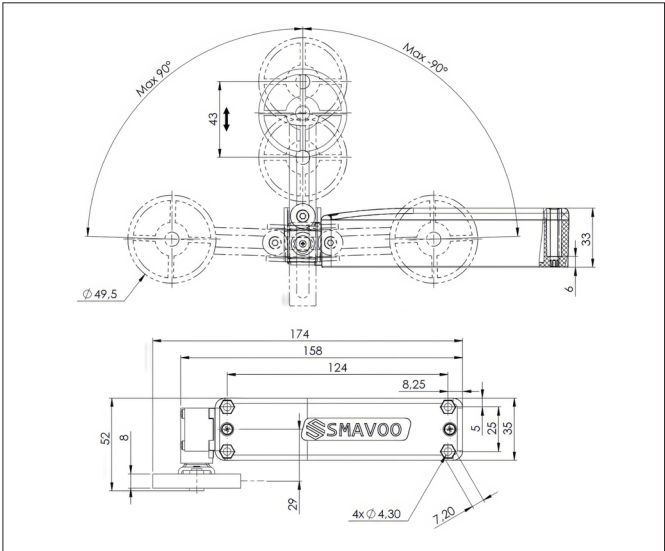
Description

The SMAVOO Switch is a highly efficient sensor that ensures the smooth operation of warehouse logistics. It monitors the presence of small boxes (KLTs) and automatically triggers material reordering when needed. With an adjustable height and slim design, it integrates seamlessly into existing shelving systems. Featuring a long battery life of three to six years, it

supports long-term, maintenance-free operation. The SMAVOO Switch optimizes material flow, reducing downtime and improving overall efficiency in warehouse management. Additionally, its hybrid communication options (WiFi & LoRaWAN) provide flexible connectivity for various industrial environments during everyday warehouse operations.

Key Features

- | | | | |
|-----|------------------------------------|-----|--------------------------------------|
| 01. | Automatic Replenishment | 03. | Hybrid Connectivity, Built for Scale |
| 02. | Long Lever with 180° Adjustability | 04. | Ultra-Low Power, Long Battery Life |
-



Enclosure	Dimensions	158 mm x 34 mm x 34 mm (enclosure)	80 mm - 123 mm (adjustable arm length)
	Weight	ca. 144 g (without battery)	ca. 200 g (with battery)
	Material & Color	PA6, orange	
	Installation	Standard rocker bracket for common KLT shelving	
Power Management	Power Supply	1x ER26500 lithium battery	
	Lifetime	Battery life of approx. 3 to 6 years in three-shift operation (depending on measurement and transmission frequency)	
Temperature Regulations	Operating Temperature	-10 °C to +40 °C	
	Ingress Protection (IP)	IP40	
Quality & Compliance	Certifications	CE	
	Warranty	24 months	
Device Functionality	Lever Switch	Long lever with 180-degree adjustability	

Use-Cases

Warehouse



The SMAVOO Switch is a wireless tilt sensor that attaches to flow rack shelves to detect the presence or absence of small boxes (KLTs). When a box is removed or emptied, the switch automatically triggers a replenishment order. This immediate response ensures that inventory is restocked without delay, solving the problem of stockouts on the warehouse floor. By automating reordering, the Switch keeps material flow uninterrupted, eliminating manual Kanban card scans or phone calls for refills. Its long battery life (up to six years) and wireless connectivity (WiFi/LoRaWAN) mean it operates maintenance-free and integrates easily into existing warehouse networks. For a company, this means reduced downtime and labor – shelves refill themselves before anyone even notices they're low, an efficiency boost that keeps the supply chain flowing smoothly. Supervisors gain real-time visibility, and teams can focus on production instead of chasing missing parts.

Production



On production assembly lines, the SMAVOO Switch is invaluable for ensuring parts bins are never empty. Mounted on line-side racks, it detects when a component bin is lifted or tilted, automatically signaling for replenishment from the warehouse. This prevents the classic scenario of a missing component halting an entire production line, by replenishing parts just in time. The switch seamlessly ties into production automation systems, so that reorders happen in real-time without human intervention. By guaranteeing that production workers always have the parts they need, it reduces errors and downtime caused by manual reordering slips. Companies integrating the SMAVOO Switch into production benefit from a more resilient, continuous workflow – essentially “missing parts” become a thing of the past. In short, this sensor brings invisible, automatic efficiency that keeps both warehouse inventory and production lines in sync, as a strong result, a compelling advantage for any operation seeking lean, error-free processes.

Frequently Asked Questions

How does the Switch know when to trigger a reorder, and can it be customized for different workflows?

The Switch uses tilt sensor technology to detect when a box (KLT) is removed or tilted beyond a specified angle. Through the SMAVOO Sensor Hub, you can fully customize the workflow, whether you want one or multiple new containers ordered per removal. The flexibility allows you to position the Switch in various rack configurations and adapt the reordering logic to match your specific production or warehouse needs.

What's the actual battery life in a real-world industrial environment?

The Switch boasts a 3-5 year battery life in three-shift operations, depending on activity levels. Using a single 3.6V C battery (UHE-ER26500-H), it's designed with ultra-low power consumption and sleep modes. Real-time battery monitoring provides proactive alerts before power runs out, ensuring maintenance can be scheduled without disrupting operations.

How does the dual connectivity (WiFi and LoRaWAN) benefit the Switch in warehouse environments?

The hybrid connectivity ensures uninterrupted operation even in challenging warehouse environments. WiFi provides high-speed communication when network coverage is available, while LoRaWAN offers long-range connectivity in areas with limited infrastructure. Most importantly, automatic failover can switch between technologies seamlessly, preventing communication gaps that could delay reorders.

What happens if multiple containers are picked quickly in succession?

The Switch features ultra-fast response times (1-5 seconds) and can be configured to handle rapid consumption scenarios. You can set rules for batch reordering, minimum/maximum quantities, or time-based grouping to prevent excessive individual orders during high-demand periods. This flexibility ensures efficient replenishment without overwhelming your supply chain.

Can the Switch integrate with our existing warehouse management system (WMS)?

Absolutely! The Switch seamlessly integrates with most WMS platforms through standard protocols. Custom firmware options ensure compatibility with your specific system requirements. Reorder signals can be formatted to match your existing procurement workflows, making adoption smooth and non-disruptive to current operations.

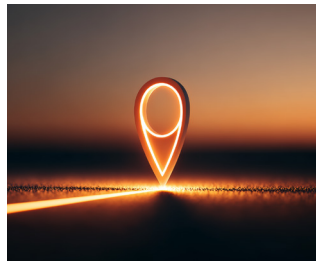


ONE.CORE *Function*

SMAVOO ONE.CORE is the heart of the SMAVOO ecosystem — a fully modular sensor platform designed specifically for demanding industrial environments. Unlike conventional IoT devices with fixed feature sets, ONE.CORE adapts precisely to your requirements through interchangeable communication modules, configurable sensor interfaces, and edge-computing

capabilities. Born out of frustration with proprietary systems that lock companies into inflexible technologies, ONE.CORE is built on open standards and a future-proof design. Start with exactly what you need today and expand the platform seamlessly as your business grows and evolves naturally — all without having to replace your hardware investment.

ONE.CORE *Key Features*

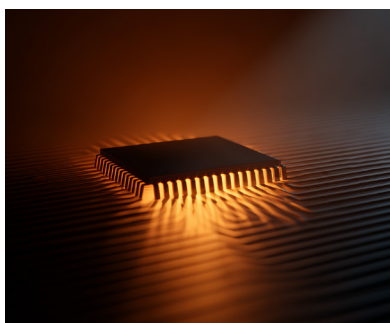


01.

Modular Communication:
WiFi, LoRaWAN, Bluetooth
Low Energy (BLE)

02.

Plug-and-Play Interface for
Sensors (RFID, Barcode,
Environment, Movement)



03.

Designed for Edge
Intelligence, Buffering,
and Fail-Safety

ONE.CORE *Multiband*

Core.CPU	240 MHz Dual Core CPU	ADC voltage monitoring (battery)
	520 KB SRAM, 4MB flash	Secure boot with flash encryption
	Hardware encryption (AES, RSA, ECC, HASH)	
	Ultra low power consumption	

Core.WiFi	WPA2 Enterprise (EAP-TLS, EAP-TTLS, EAP-PEAP, EAP-FAST)	
	IEEE 802.11 b/g/n, up to 150 Mbps	
	X.509 certifications (4096-bit)	
	Firmware upgrade via Over-the-Air Update (OTA)	

Core.LoRaWAN (optional)	CN470/IN865/EU868/RU864/US915/AU915/KR920/AS923-1&2&3&4	
	FSK, GFSK, MSK, GMSK, LoRaTM and OOK Modulation	
	127 dB Dynamic Range RSSI	Over the Air Activation (OTAA)
	Activation by Personalization (ABP)	Advanced Encryption Standard (AES)
	-144 dBm sensitivity	IEEE802.15.4g

Core.BLE (optional Core.PDI)	Compliant with Bluetooth v4.2 BR/EDR and Bluetooth LE specifications	
	NZIF receiver with -94 dBm Bluetooth LE sensitivity	
	Adaptive Frequency Hopping (AFH)	
	Bluetooth 4.2 BR/EDR and Bluetooth LE dual mode controller	
	Multi-connections in Classic Bluetooth and Bluetooth LE	
	Simultaneous advertising and scanning	

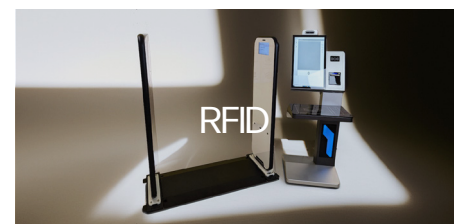
SMAVOO *Solutions*

Hybrid Tracking

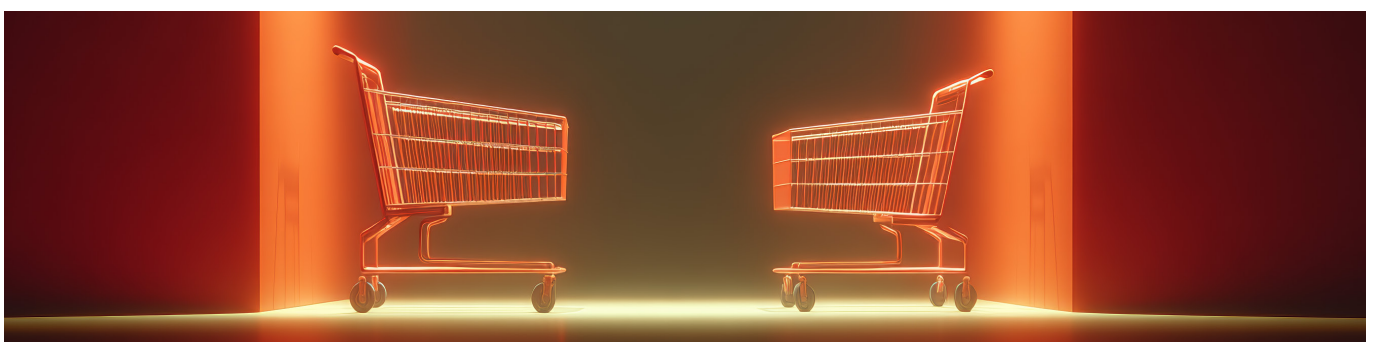


Hybrid indoor and outdoor tracking means none of your assets go AWOL on our watch. Our smart trackers give you a real-time overview over your assets, and

seamlessly move from outdoor to indoor. Our RFID solutions make sure you always know what's there - even with tricky interferences or metal parts.

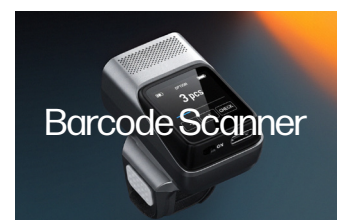


Smart Picking

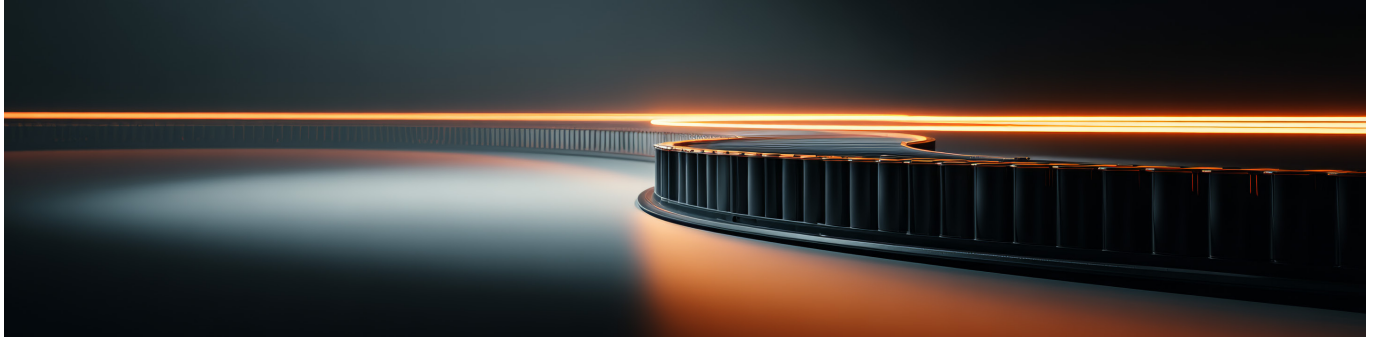


Smart picking guides your workers from A to B - and our solutions are there to make sure every pick is the right one. From saving paper by replacing picklists with

our EPD Tablets, handsfree Barcode-Scanners or our range of smart labels for KLTs and GLTs - we're always there to make sure the process flows just as intended.

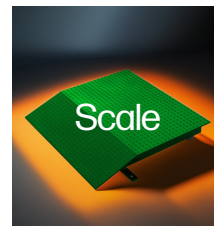
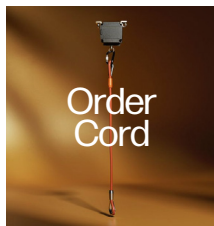


Smart Reordering & eKanban



With our range of automatic and semi-automatic line feeding solutions, we make sure your line never stops. From Distance Sensors to Switches and Scales

that detect when material levels are below a certain threshold to Order Cords and Reorder-Buttons: We make sure everything arrives on time, every time.

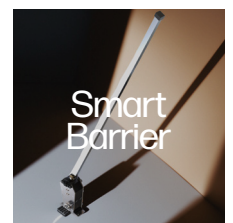
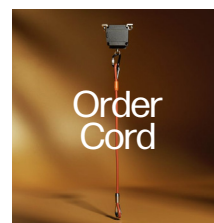


AGV/AMR Sensors



Our range of AGV/AMR sensors make sure your indoor transport is always perfectly coordinated and safe. With light-guided systems, AGV Buzzers and Smart

Barriers, your existing fleet always finds its way through your warehouse - and if you're still looking for an AGV fleet, we've got you covered with our models as well.

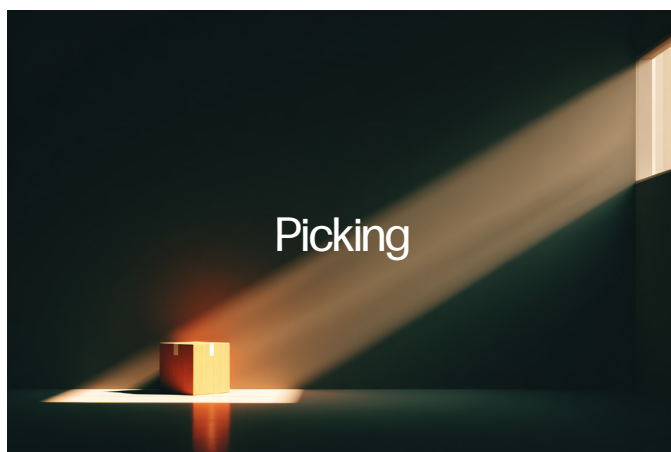
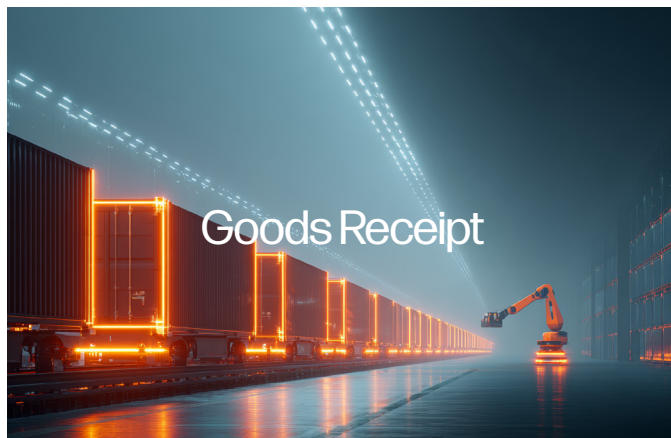


About SMAVOO

At SMAVOO, we believe in all-in-one-solutions: Hardware, Software & Service. We specialize in Industrial IoT (IIoT) solutions for production and logistics. Our expertise spans RFID technology, sensor networks, and software development with the goal

of creating modular systems that make operations efficient, transparent, and error-free. Our customized solutions help companies digitalize their processes and make smarter decisions through real-time tracking across all modern workflows.

Material Flow



We're not here to bulldoze your workflow: Keep what works, ditch what doesn't. We plug in, make it smarter, and let you scale or pivot without rewriting your playbook. And because we're logistics people too, we know the pain of endless integration projects. We've

been there, done that, and built something better: Fast rollouts, real support, and partnerships that don't vanish after go-live. Our track record? Industry leaders trust us to keep them ahead - because we deliver the goods, not just the sales pitch.

Smart, Seamless and Scalable. Or *Simply SMAVVO*.



Contact Us

Excited about the future? So are we, and we look forward to optimizing your processes together. Whether you're interested in a demo setup or just a casual introduction, you can reach us here.

General Enquiries

sales@smavoo.com
smavoo.com

Dr. Rouven-B. Wiegand

Managing Director
Phone: +49 511 515614 08