

# RG ROBOTIX

*Custom Warehouse Solutions*



## PULL BUDDY

Efficient | Accurate | Connected

### *Description*

Tailored for material transportation within manufacturing and warehousing settings, the PullBuddy stands out for its robustness, reliability, and seamless integration with existing workflows. Its advanced navigation system ensures precise and secure operations.



### *Primary Applications*

- **Manufacturing**
  - Line Side Inventory Delivery
  - Dunnage Removal
- **Warehouse**
  - Dock to Racks
  - Racks to Shipping

### *Simple, Durable, Safe*

- Safety-rated edge sensors to avoid collision
- Easy to install and maintain.
- Full control Interface utilizing BotWay Software Suite

# RG ROBOTIX

*Custom Warehouse Solutions*



## *Pull Buddy Features*

Pull Buddy is a reliable, safe and durable single-direction Tugging AGV featuring a Load Capacity of 2200lbs. This versatile AGV allows for several standard cart offerings to fit your towing needs and has the capability of both manual and opportunity charging in a dynamic warehouse or manufacturing environment.

### *Dimensions*

Length	62.5 in
Width	44.3 in
Height	10.8 in (top plate)
Ground Clearance	~1 in
Vehicle Weight	600 lbs

### *Safety*

Enunciator	100 db
LIDAR	Adjustable Range and Sweep
Lights	Blue Floor Projected LEDs

### *Operating Environment*

Ambient Temperature	41 F to 104 F
---------------------	---------------

### *Performance Load*

Max Speed Load/unload	2.1 mph
Minimum Turn Radius	36 in
Max Allowable Tape Gap	0.75 in

### *Power System*

Battery	LiFePO4 (Lithium Ion) 24 V 100 Ah
Use from Full Charge	10 Hr Continuous Run at Max Rated Load

### *Interface*

Full Control	BotWay Software Suite
On-board HMI	7 in Color Touch Screen



51745 Filomena Drive | Shelby Township, MI 48315  
586.265.2376 |  
[info@rgrobotix.com](mailto:info@rgrobotix.com)  
[rgrobotix.com](http://rgrobotix.com)

Scan to Learn More!



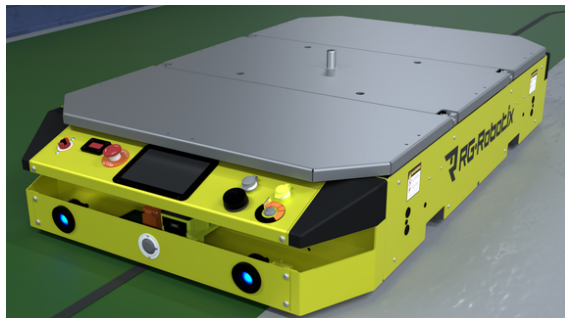
Scan for a Video!





## Hitch Options

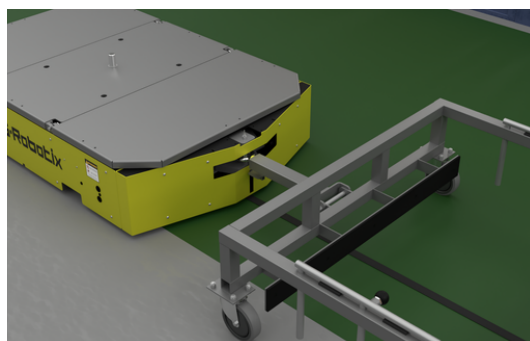
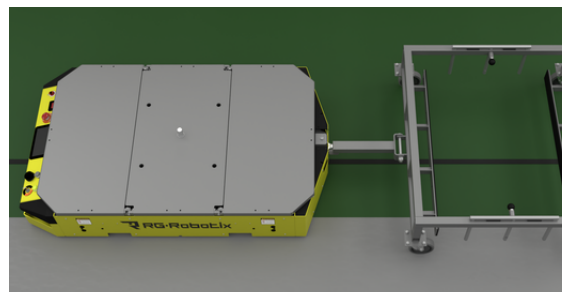
### Simple Hitch Pin Release



- This is the most basic option available to the Pull Buddy.
- A simple hitch pin release is recommended if the intent is never to remove or rarely remove a tugged cart of materials/products.

- Pull buddy will automatically drop off a tugged cart of materials/products in a defined location.
- This option requires manual/human interaction for cart pick up.

### Automatic Decouple



- Pull buddy will automatically pick up and drop off a cart of a tugged cart of materials/products in a defined location.
- This option requires no manual/human interaction for drop off or pick up.

### Automatic Couple/Decouple