



Composting & Recycling is the Law

Properly sorting your food scraps and other compostable materials not only helps fight climate change, it is now the law. **Effective January 1, 2022, State law (SB 1383) requires residents to keep compostable and recyclable materials out of California's landfills.**

When compostable materials like food scraps, plant trimmings, and paper break down in a landfill they produce methane, a potent greenhouse gas that contributes to climate change. By composting and recycling these materials, you are helping to reduce methane emissions and create a healthier planet.



Battery Program

AVI provides battery recycling containers for multi-family properties. Property managers can request a free battery container from AVI. All household batteries are accepted in the recycling program.

If you do not have a battery recycling container at your multi-family property, please reach out to your property manager to add this program to your complex.



Textile Recycling Program

AVI will collect textiles for recycling and reuse from Dublin MFD residents during the first full weeks of July, October, January, and April.

How To Participate: Property Managers must call at least 7 days in advance to notify AVI that they will have textiles to be collected. We accept clean, dry clothing, stuffed animals, bedding, and towels. Residents must place acceptable textiles in a clear plastic bag at the location your property manager specified.



There is no fee for this service. Residents will not receive a tax-deductible receipt. Please have your property management call AVI at **(925) 479-9545** to schedule a quarterly pickup.



Reuse & Bulky Items

First, donate usable items to local stores. If reuse isn't an option, ask your property manager about AVI's free large item pickups — each site gets three (3) per year.

Prsrt Std
US Postage
PAID
San Ramon, CA
Permit #89



Mailing Address:
PO Box 12617
Pleasanton, CA 94588

Office Address:
6175 Southfront Road
Livermore, CA 94551

info@amadorvalleyindustries.com
(925) 479-9545
amadorvalleyindustries.com

NEW SERVICE UPDATE
Important Information About Your
Garbage and Recycling Services



Rev 03/2026



APARTMENT & CONDOMINIUM SERVICES GUIDE FOR PROPER SORTING AND DISPOSAL



FOR THE CITY OF DUBLIN



RECYCLE



Collect recyclables in your recycling tote bag or a paper bag. Do not use plastic bags.



Paper



Plastic Bottles & Containers

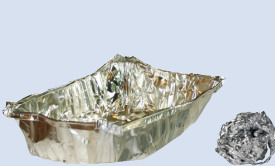


Flatten all Boxes!

Cardboard



Glass Bottles & Jars



Aluminum Foil & Pans



Aerosol & Metal Cans

KEEP THESE ITEMS OUT OF THE RECYCLE BIN.



Clothing and Textiles



Dishware & Drinking Glasses



Plastic Bags & Utensils



Food-Soiled Recyclables

COMPOST



Collect food scraps in a kitchen pail or paper bag, or wrap food scraps in newspaper.



Food Scraps

- meat
- dairy
- produce
- bones
- grains



Food Soiled Paper

No plastic coated paper



Flowers & Plant Debris



Paper Napkins, Towels & Tissues

All material placed in the compost container is made into compost used to nourish local farmlands. Please **ONLY** put food scraps, food soiled paper, and plant debris in the compost container.

KEEP THESE ITEMS OUT OF THE COMPOST BIN.



Plastic



Glass



Diapers & Pet Waste

GARBAGE



Plastic Bags & Wraps
Retail shipping bags



Polystyrene Foam



Waxed Drink Cartons & Beverage Boxes



Plastic Utensils, Lids, & Straws



Diapers & Pet Waste
Pet waste litter **must** be in a bag



Miscellaneous Household Waste

KEEP THESE ITEMS OUT OF THE GARBAGE BIN.



Recyclables



Hazardous Materials & E-Waste



Compost

FREE DROP OFF OF QUALIFYING HAZARDOUS MATERIALS & E-WASTE



Fluorescent Bulbs



Batteries



Household Cleaners and Chemicals



Sharps Containers



Electronics



Small Appliances

ALAMEDA COUNTY HOUSEHOLD HAZARDOUS WASTE FACILITIES

Livermore • Hayward • Oakland • Fremont

Visit StopWaste.org/HHW or call (800) 606-6606 for more details and hours of operation.

Medications

Check StopWaste.org/HHW for disposal instructions.



Drop-off Kiosk Locations	Over-the-Counter Prescriptions*	Sharps
CVS Pharmacy (Regional St.)	✓	✓
Dublin Police Department	✓	✓
Kaiser Permanente Pharmacy	✓	✓

*liquids and creams allowed at CVS Pharmacy and Kaiser Permanente Pharmacy

Go Beyond the Bin

Visit StopWaste.Org or call the Alameda County Recycling Hotline at 877-STOPWASTE (877-786-7927) for more local reuse, recycling, and disposal options.



We're Here to Help!
(925) 479-9545
info@amadorvalleyindustries.com
AmadorValleyIndustries.com