

Upload Data from Holter Device

BeatBox User Guide

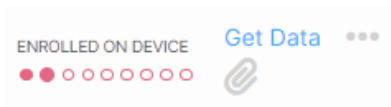
BeatBox User Guide – myPatch®sl

Upload Data from Holter Device

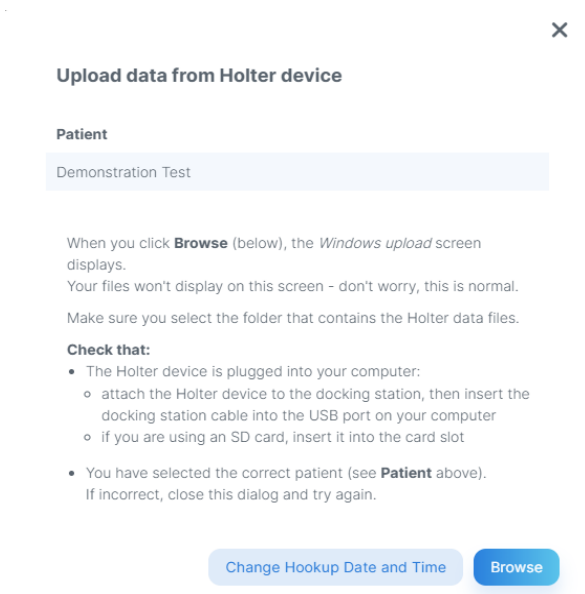
Select patient

1. Go to your Worklist and [search](#) for the patient's procedure.

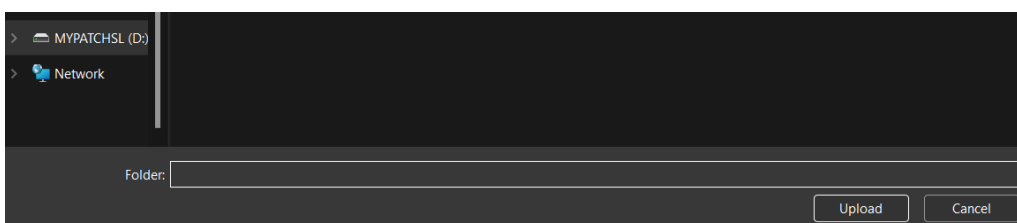
2. To the right of the procedure, click **Get data**.



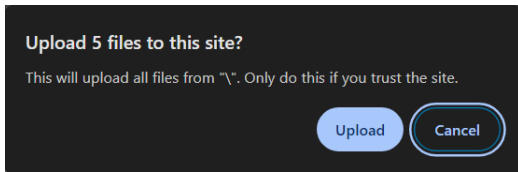
3. Select **Browse**



4. On the upload window, select MYPATCH then click **Upload**.



5. Click **Upload** again



Check/add patient events

The myPatch®sl Holter device enables the patient to indicate if they experience any mild symptoms while wearing the device.

The patient double-taps the device when they experience an event then records the date and time in their *Symptom diary*, as well as their symptoms and the activities that they were performing at the time.


Patient-registered events are included with the Holter data that you upload from the device.

Note: Patients don't always remember to register events on their device. However, you can refer to the patient's *Symptom diary* and manually add the events that they documented.

1. Obtain the patient's *Symptom diary*, then correlate the events recorded on this document against the events listed in the *Events* window (if any).
-

2. Add/update details as required to match the details recorded by the patient in their *Symptom diary*:


Add new event

- click 
- select the date and time of the event
- select any symptoms and choose the relevant activity intensity

Edit an event

- to clear all details for an event, click **Clear** then click **Yes** to confirm (or **No** to cancel)
- to edit specific details for an event, update the options in the relevant field/s

Delete an event

- click  next to the event
- click **Yes** to confirm your deletion (or click **No** to cancel your delete request)

Sort events

To sort events into date order (with the earliest event at the top of the list) click **Sort events**.

Note: If a patient double-tapped their device to record an event but didn't add corresponding symptoms in their *Symptom diary* for that event, the words 'Patient-triggered event' will display in the **Symptoms** field.

3. When you have finished, click **Done**.

If the Holter data files are uploaded successfully, the procedure status changes to 'Ready for analysis'.