

How do I use Web Enrollment for myPatch®sl

****These steps need to be followed *after* selecting Save > Enroll Now in procedure window****

1. Click Continue

Web Enrollment

Before starting, please ensure that the myPatch® Holter device is plugged to your computer.

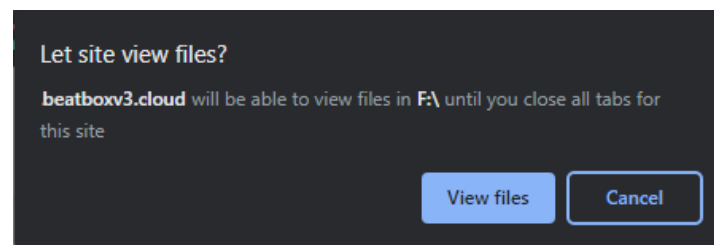
As part of **Web Enrollment**, you will be asked to:

- Grant BeatBox access to the serial port. To do so, select **STM32 Virtual ComPort in FS Mode** in the pop-up window, then click on "Connect". You only need to do this once, unless your browser settings are reset.
- Grant BeatBox access to the device. To do so, navigate to and select **MYPATCHSL** drive in the pop-up window and follow the prompts.

Cancel

Continue

2. Select 'View Files'



3. Confirm the details of the myPatch®sl enrolment are correct

MyPatch Enrolment

Please confirm the below details.

Serial number	B81D7A10	Electrode	Standard
First Name	Test Patient	Sample rate	256
Last Name	Test Patient	Channels	1,2
Gender	Male	Recording Duration	1 day
Date of birth	04/04/1980		
Laboratory	WebEnrollment		
Recorded	05/04/2022 11:11:00		

Cancel
Enrol on device

4. Click **Enroll on device** to complete the enrollment process
5. You will see a success message

The patient is now enrolled on the Holter device. The procedure's status is now 'Enrolled on device' and an 'Enrolled' tag is attached to the procedure.