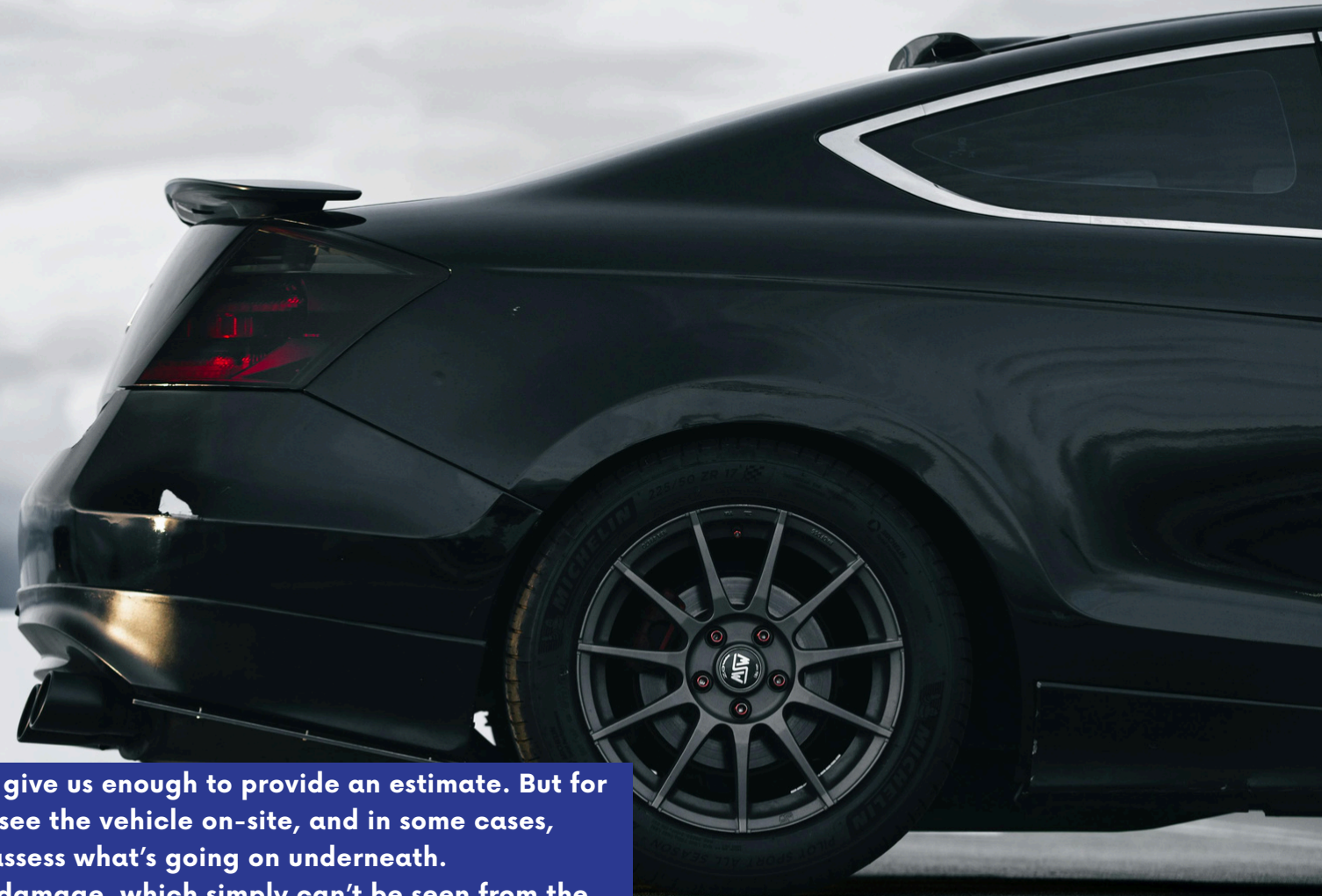


KJ RULE ONLINE ESTIMATE

# PHOTO GUIDE



**K.J. RULE**  
PRECISION VEHICLE REPAIRS



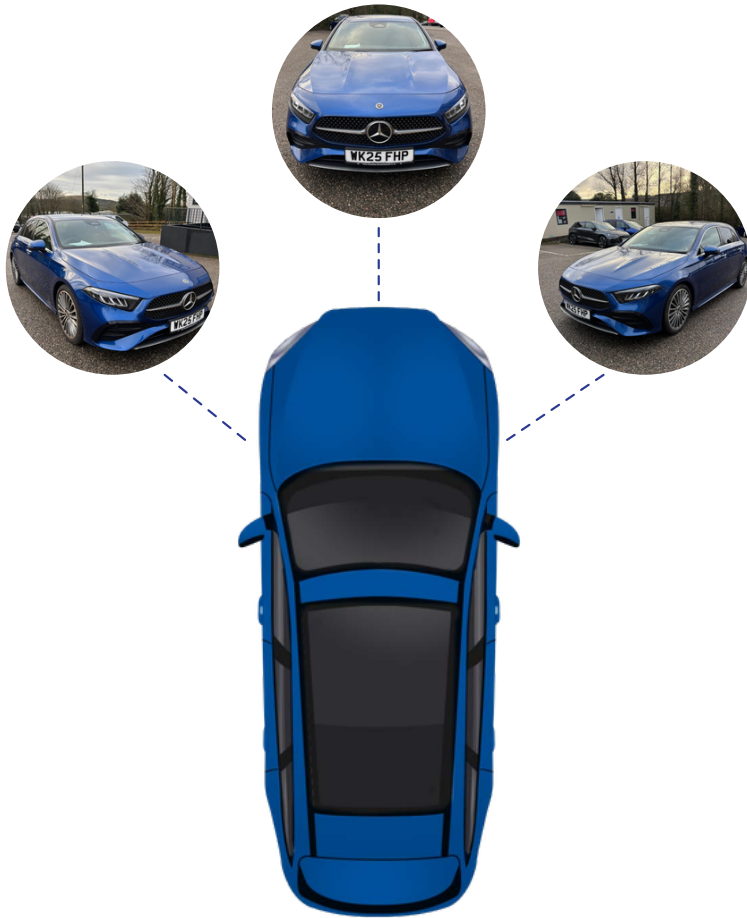
For smaller, surface-level repairs, photos often give us enough to provide an estimate. But for more significant damage, we may need to see the vehicle on-site, and in some cases, partially dismantle it, to properly assess what's going on underneath. Larger repairs can hide structural or internal damage, which simply can't be seen from the outside.

That's why online estimates aren't always suitable for big jobs, we need to dig a little deeper to give you (and your insurer) an accurate picture.

# 1. COMPLETE VEHICLE OVERVIEW (INCLUDING BADGES AND DECALS)

PLEASE NOTE: IMAGES SHOULD BE TAKEN  
LEVEL WITH THE DAMAGED AREA

## FRONT & BACK Images

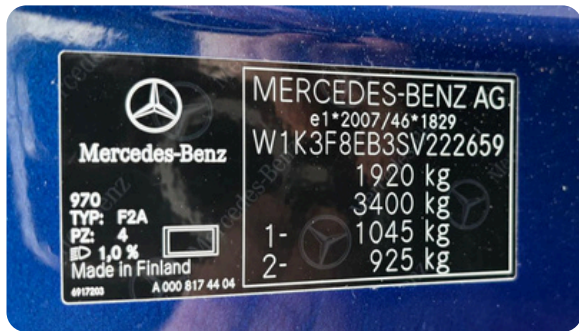


## SIDE Images



## 2 COMPLIANCE / BUILD PLATE WITH VIN

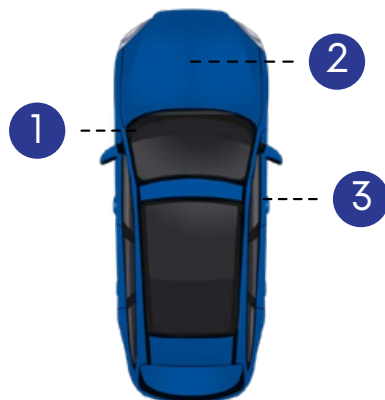
A Vehicle Identification Number (VIN) is the vehicle's 17-digit serial number which is unique to each vehicle. Each car's VIN is displayed in a small metal plaque that can be seen from the outside through the front windscreen at the bottom corner near the front passenger side door. The VIN can also be found under the bonnet in the cars engine bay or on the passenger side or drivers side front door pillar. If you can still not locate the VIN, it will be on your vehicle's registration papers.



Example of a VIN

### Locating your VIN number

- 1 Passengers side windscreen
- 2 Under the bonnet
- 3 Drivers side door closure area



## 3 ODOMETER READING



## 4

Multiple images and close up images of the damaged area.

Clear images will show our estimators the full extent of the damage