

MAKING CHARITABLE GIVING FUN AND ACCESSIBLE

Giving back to your community should be fun and accessible. The Foundation can connect you to causes you are passionate about in Grays Harbor. We will take care of all the logistics, allowing you to make a lasting impact on our community.

GRAYS HARBOR COMMUNITY FOUNDATION

705 J. Street, Hoquiam, WA
info@gh-cf.org
(360) 532-1600

www.gh-cf.org

DONOR ADVISED FUNDS

THE FOUNDATION
MANAGES OVER

200

DIFFERENT FUNDS FOR
INDIVIDUALS AND
ORGANIZATIONS IN GRAYS
HARBOR

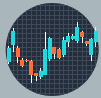


Type of Gifts

1



Cash



Stock



Other Assets

Determine the types of gift you will make (\$5,000 or more).



Simplifies Charitable Giving Record Keeping



Easily Gift Assets



Effective Tax Planning Vehicle



Involve Generations of Family Giving



Effective Estate Planning Tool



Expertise in Helping you Develop an Effective Grantmaking Program

Name Your Fund

2



Decide who to involve



Name your fund (perhaps the name of your family or business). Decide any family members or colleagues you'd like to involve in your giving (either as successor advisers or additional advisers).

Donor Advised Fund

3



GHCF will draft the Donor Advised Fund document to create your personal Foundation.

Grant Your Causes

4



Favorite Causes



Schools



Scholarships

Identify what types of causes you are passionate about supporting and make grants out of your fund to support them. If you need help, GHCF can share opportunities that may pique your interests.

"The Foundation knows my passions in the community and gives me suggestions on organizations or projects that align with those passions. I am able to give back to the community that I care about and benefit from their inside knowledge on the current needs in Grays Harbor."