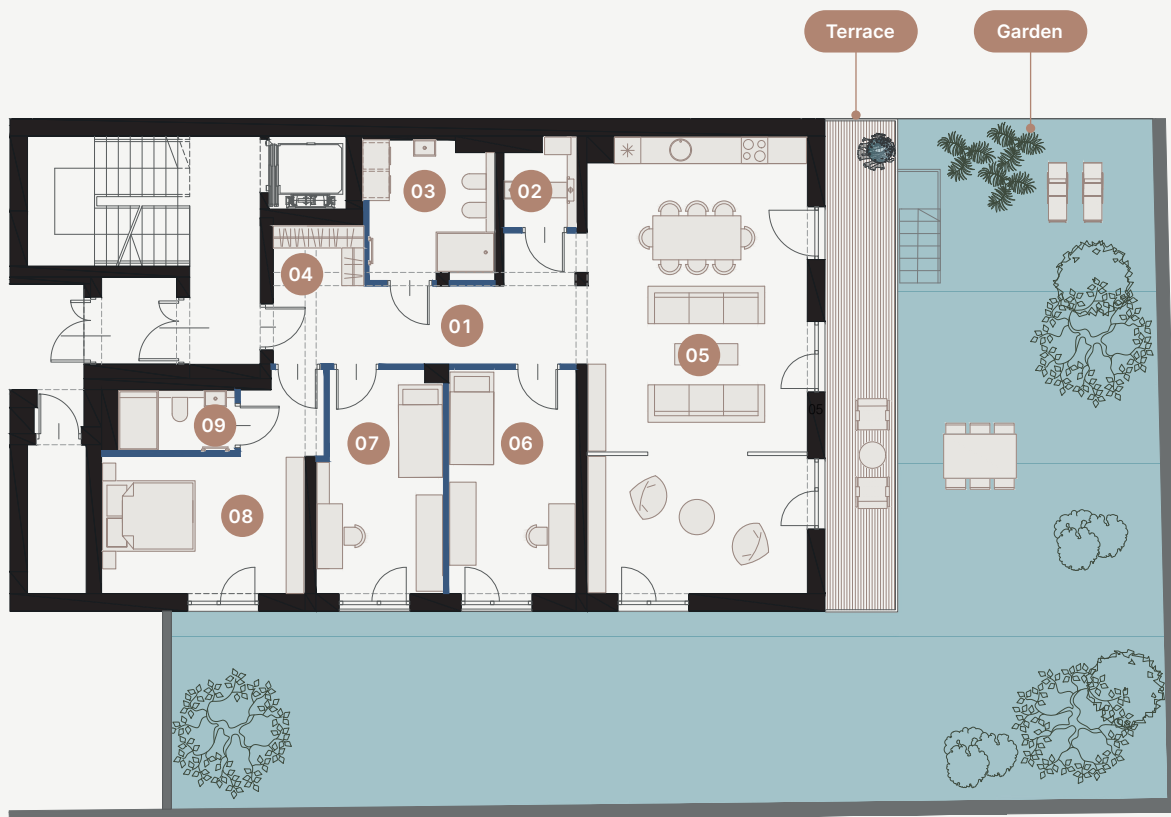




# Złoty Róg 54

Exclusive boutique investment.  
Four apartments surrounded by silence, in a quiet  
enclave amid single-family housing.



— Load-bearing wall  
— Partition wall

# Apartment 1

Apartment area: 131,00 m<sup>2</sup>

Terrace area: 28,00 m<sup>2</sup>

Garden area: 180,00 m<sup>2</sup>



01 Hallway 12,00 m<sup>2</sup>

02 WC 2,50 m<sup>2</sup>

03 Bathroom 10,00 m<sup>2</sup>

04 Dressing room 3,00 m<sup>2</sup>

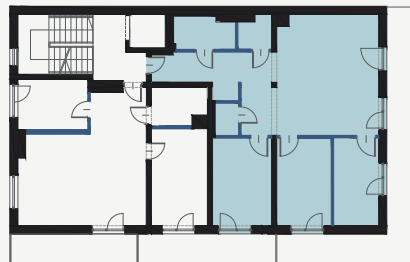
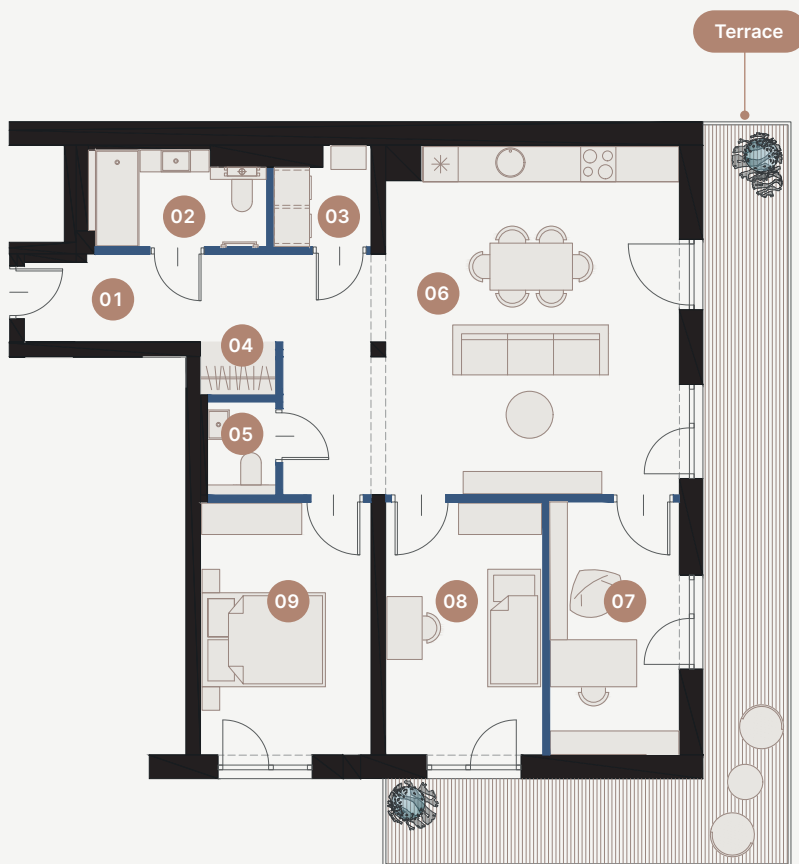
05 Room with kitchenette 53,50 m<sup>2</sup>

06 Room 14,50 m<sup>2</sup>

07 Room 13,50 m<sup>2</sup>

08 Room 18,00 m<sup>2</sup>

09 Bathroom 4,00 m<sup>2</sup>



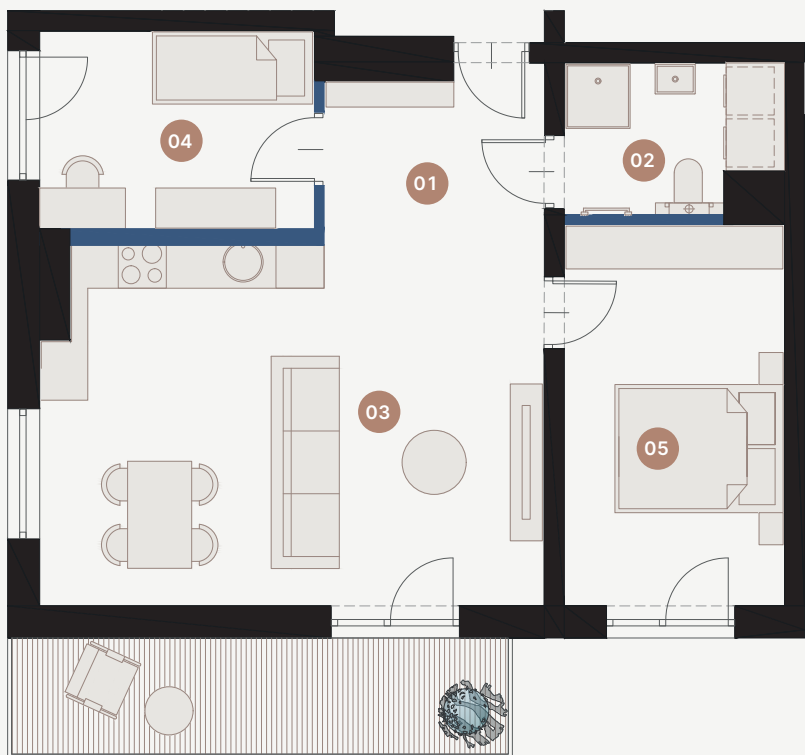
# Apartment 2

Apartment area: 88,50 m<sup>2</sup>

Terrace area: 21,00 m<sup>2</sup>

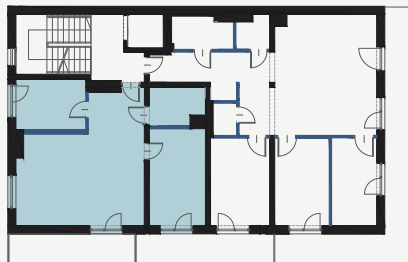


|    |                       |                      |
|----|-----------------------|----------------------|
| 01 | Hallway               | 12,20 m <sup>2</sup> |
| 02 | Bathroom              | 5.50 m <sup>2</sup>  |
| 03 | Laundry room          | 2,00 m <sup>2</sup>  |
| 04 | Dressing room         | 1,00 m <sup>2</sup>  |
| 05 | WC                    | 2,30 m <sup>2</sup>  |
| 06 | Room with kitchenette | 31,50 m <sup>2</sup> |
| 07 | Room                  | 10,00 m <sup>2</sup> |
| 08 | Room                  | 11,50 m <sup>2</sup> |
| 09 | Room                  | 12,50 m <sup>2</sup> |



Terrace

— Load-bearing wall  
— Partition wall



# Apartment 3

Apartment area: 59,50 m<sup>2</sup>

Terrace area: 9,00 m<sup>2</sup>



P1

|    |                       |                      |
|----|-----------------------|----------------------|
| 01 | Entrance hall         | 4,00 m <sup>2</sup>  |
| 02 | Bathroom              | 5,00 m <sup>2</sup>  |
| 03 | Room with kitchenette | 28,00 m <sup>2</sup> |
| 04 | Room                  | 10,00 m <sup>2</sup> |
| 05 | Room                  | 12,50 m <sup>2</sup> |



Terrace 1

Terrace 2

— Load-bearing wall  
— Partition wall

# Apartament 4

Apartment area: 152,50 m<sup>2</sup>

Terrace 1 & 2 surface: 34,00 m<sup>2</sup>

Rooftop terrace area: 70,00 m<sup>2</sup>



01 Hallway 21,00 m<sup>2</sup>

02 WC 2,00 m<sup>2</sup>

03 Bathroom 9,00 m<sup>2</sup>

04 Room with kitchenette 53,50 m<sup>2</sup>

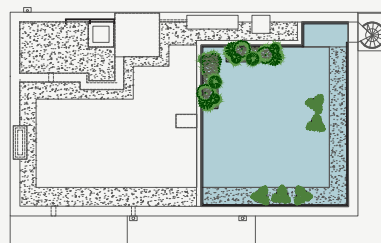
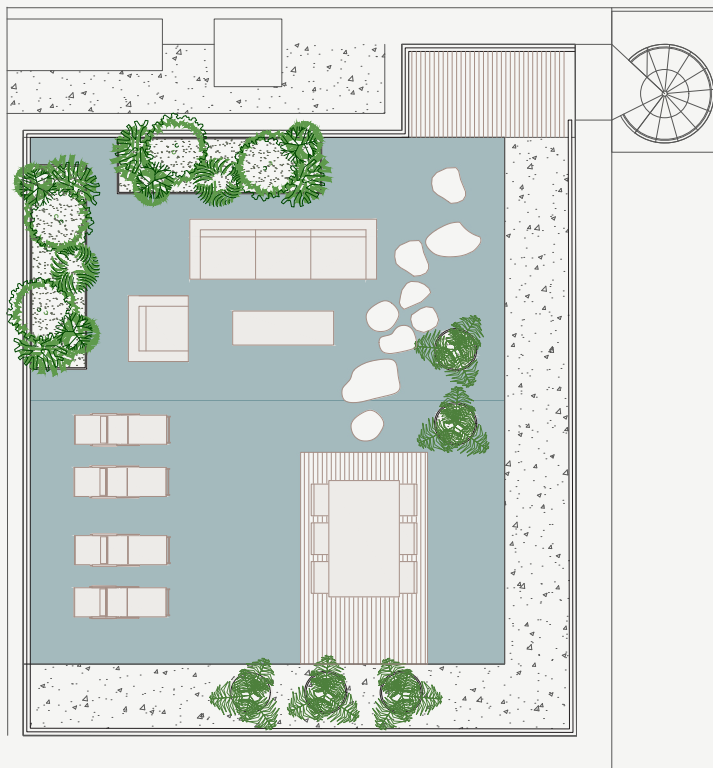
05 Room 15,50 m<sup>2</sup>

06 Room 13,50 m<sup>2</sup>

07 Room 23,00 m<sup>2</sup>

08 Bathroom 4,50 m<sup>2</sup>

09 Room 10,50 m<sup>2</sup>



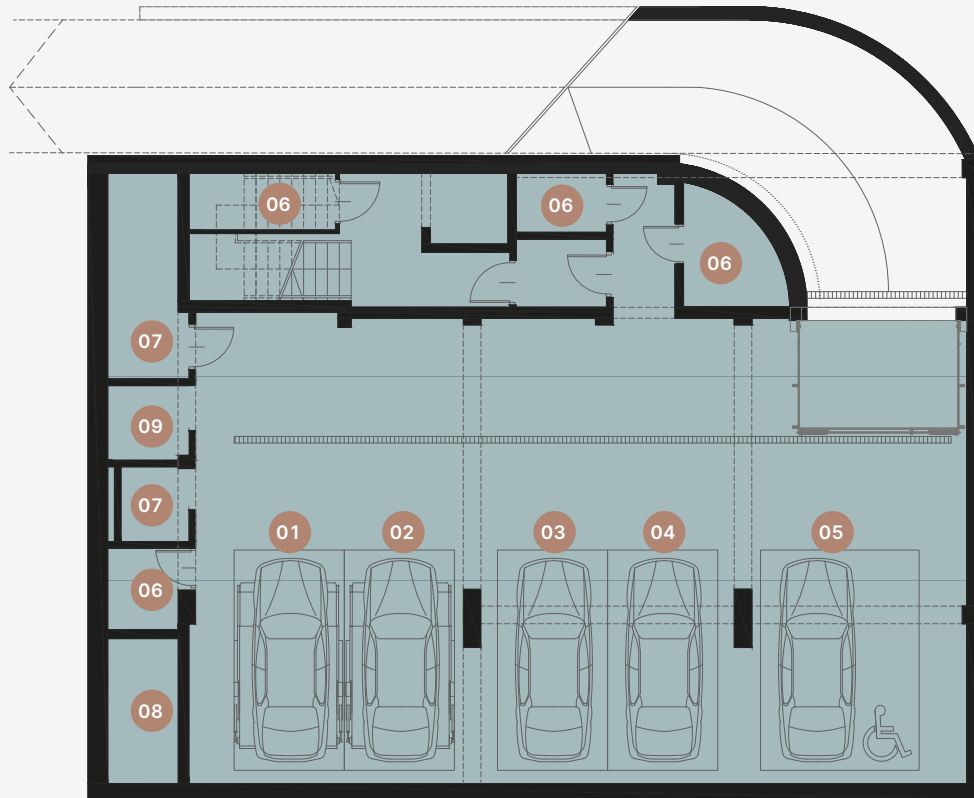
— Load-bearing wall  
— Partition wall

# Apartament 4

Apartment area: 152,50 m<sup>2</sup>

Rooftop terrace area: 70,00 m<sup>2</sup>





— Load-bearing wall  
— Partition wall

# Garage

Number of parking spaces: 7 spaces

Number of storage units: 4 units



|    |                                     |
|----|-------------------------------------|
| 01 | 2 spaces on platform lift (no. 1&2) |
| 02 | 2 spaces on platform lift (no. 3&4) |
| 03 | Single space (no. 5)                |
| 04 | Single space (no. 6)                |
| 05 | Single space (no. 7)                |
| 06 | Storage units                       |
| 07 | Technical rooms                     |
| 08 | Wastewater tank                     |
| 09 | Wash station                        |

# Złoty Róg 54

zr54.com



frena.pl



## Contact person:

Justyna Matysiak  
+48 881 626 161  
justyna@frena.pl

## Investment address:

Złoty Róg 54  
54 Złoty Róg St  
30-095 Kraków – Bronowice, Poland

## Frena office:

Frena  
29 Radziwiłłowska St, Apt 7  
32-026 Kraków – Old Town, Poland