



WORKSHEET FOR ELEMENTARY SCHOOLS

LIGHT AND DARKNESS

Light has been with us since the beginning of time. We need it every day, but it also plays an important role in art. The exhibition Signal Space shows how light can be combined with modern technology. It may surprise you, but artists have been working with light for over a hundred years. Light influences how we see things. It helps create shapes, colors, and moods. In churches, light was a symbol of something extraordinary. In painting, it was used to create tension or a mysterious atmosphere. Science tells us that the colors we see are actually different kinds of light. Our brain then converts them into colors. **Without light, we wouldn't be able to see the world around us. And without light, art wouldn't exist either.**

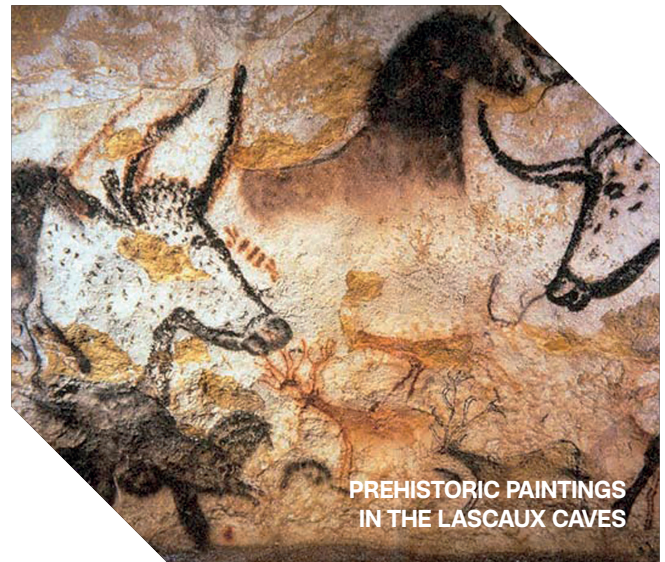
II. LIGHT ART FROM PREHISTORY TO THE PRESENT

Did you know that even prehistoric people worked with light? They painted on cave walls and had to use light just to see. The light from the fire created moving shadows, so their paintings looked alive and a bit mysterious.

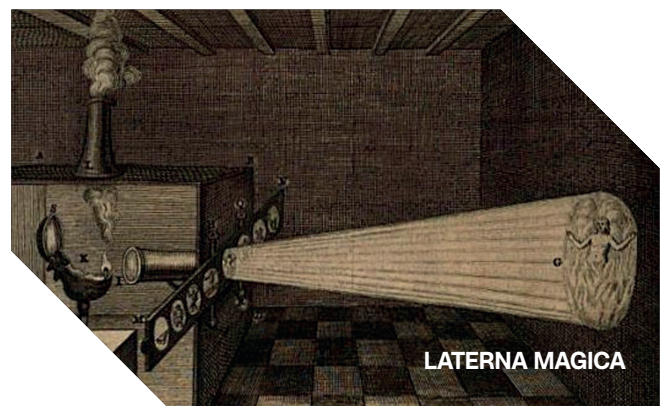
→ QUESTION 01

WHAT DID PREHISTORIC PEOPLE USE TO PAINT ON WALLS? WHAT KIND OF LIGHT DID THEY USE? (natural pigments, charcoal / fire, torches)

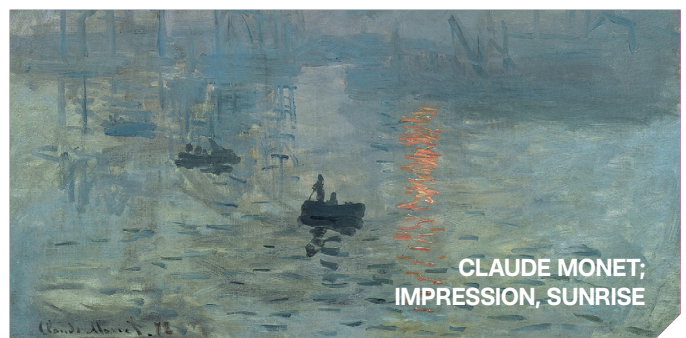
Later, people invented a device called the magic lantern. It was a wooden box with a light inside that projected images onto a wall. It was, in fact, the predecessor to today's cinema.



PREHISTORIC PAINTINGS
IN THE LASCAUX CAVES



LATERNA MAGICA



CLAUDE MONET;
IMPRESSION, SUNRISE

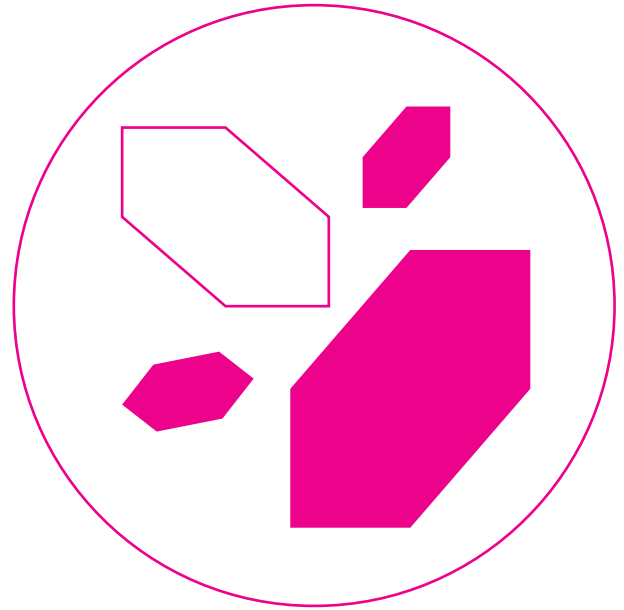
→ ANSWER

TASK 1

TRY WORKING WITH LIGHT. USE A ROLL OF TOILET PAPER TO MAKE A PEEPHOLE.

Do you want it to be colorful? Add some colored foil or clear tape. Do you want it to glow or project something?

Use a flashlight. Try different things: colors, shapes, mirrors, glass, or other transparent materials. Find out what light can do.



III. LIGHT AND ART THAT SHINES

In the 20th century, artists began using light as their primary medium. Some worked with ordinary lights to create colorful installations. Others created entire spaces in which one feels as if they were inside the light.

Today, for example, we can see projections on buildings, light objects that change over time, or installations that respond to people's movements.



→ QUESTION 02

WHAT KIND OF LIGHT SOURCE WAS USED IN THE PAST? (e.g., a candle)

In the 19th century, painters sought to capture the light at a specific time of day. They discovered that even shadows have colors.

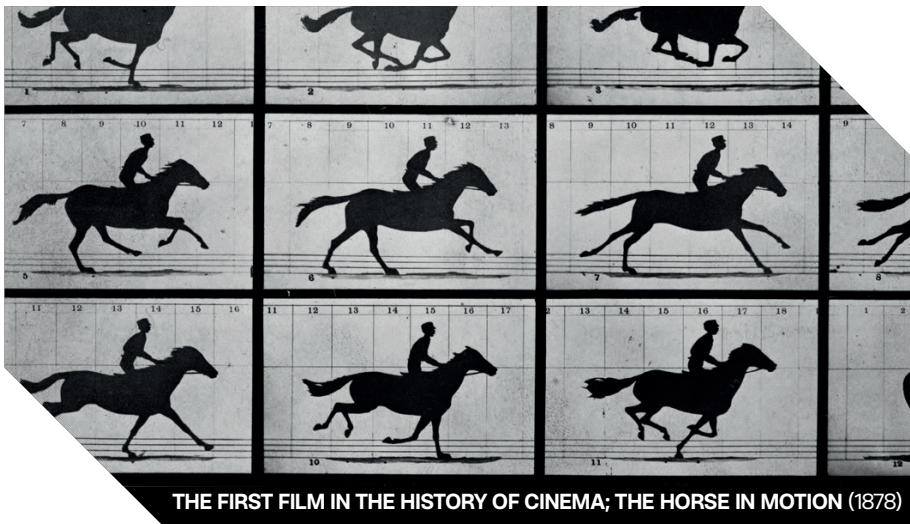
→ ANSWER

→ QUESTION 03

WHAT ELSE CAN THE LIGHT IN THE PAINTING REVEAL?

(time) Working with light has also led to important inventions such as photography and film.

→ ANSWER



THE FIRST FILM IN THE HISTORY OF CINEMA; THE HORSE IN MOTION (1878)

→ QUESTION 04

WHY IS A MOVIE CALLED A „MOVING PICTURE“?

(because it is made up of many images that change rapidly)

→ ANSWER

TASK 2

TRY CREATING ART WITHOUT ELECTRICITY.

Use sunlight, reflections in glass, water, or metal. Play with shadows, colors, and shapes. Can you create something interesting using only light?

TASK 3

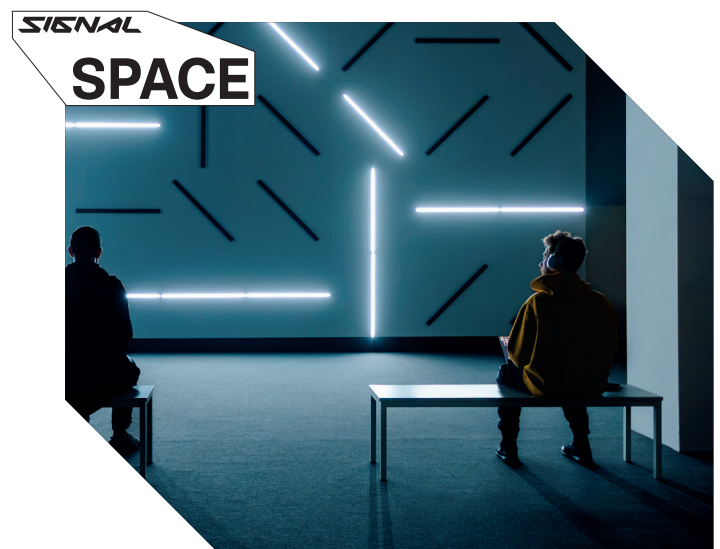
CUT A CIRCLE OUT OF STIFF PAPER AND TIE TWO STRINGS TO IT.

Draw a different picture on each side. When you spin the strings, the pictures will come together and create movement. Try to create a little story.

IV. HOW LIGHT INSTALLATIONS WORK

COME CHECK IT OUT AT SIGNAL SPACE

Each work in the exhibition offers a different perspective on the world around us. Some will transport you to the future, while others will make you reflect on how we live today. Sometimes you'll find yourself in a space that changes with every step you take. Other times, you'll enter an installation that reacts to your movement. Light creates images here, sound transforms the space, and everything together comes together as a living whole. **These installations aren't just things to look at. They change, react to people, and create a different experience every time.**





SIGNAL PLAYGROUND

This part of the exhibition is mainly for children. It combines play, light, movement, and sound.



SIGNAL

PLAYGROUND

You can try out how various principles of physics and math work without having to think too hard about it.

You can roll the marbles and watch them move under the force of gravity.

Your silhouette can dominate the image, colors, and shapes.

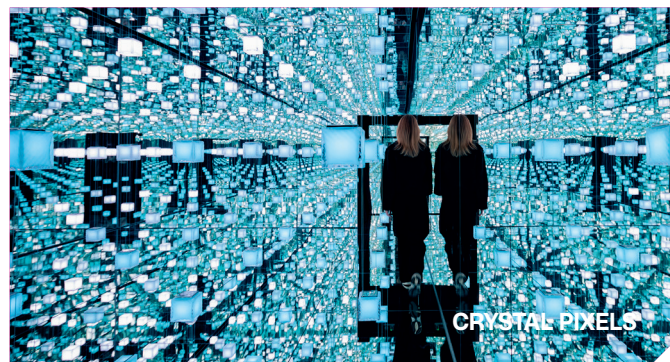
You can create your own animation. The camera captures the shapes you assemble and projects them onto the screen.



You can find out how the body would move on Earth and on the Moon.

CRYSTAL PIXELS

Here you'll see glass elements that refract and reflect light. The light changes as you move. This installation combines traditional glasswork with modern technology. It shows that old craftsmanship and new ideas can work together.



CRYSTAL PIXELS

ABIOTENESIS

In this section, you'll see how life can emerge. In the beginning, there is chaos, from which more complex forms gradually emerge. The image is constantly changing and resembles a view under a microscope or an abstract painting. The work shows that even from disorder, something new and interesting can emerge.



MARKOS KAY
ABIOTENESIS

**AS YOU WALK THROUGH THE EXHIBITION, TRY TO NOTICE ALL THE THINGS LIGHT CAN DO. IT MIGHT SURPRISE YOU MORE THAN YOU EXPECT.
ENJOY YOUR JOURNEY THROUGH LIGHT.**