

CAMPANHA COLLECTION

DLV
DE LA VEGA

Campanha Chaise



The Campanha collection is a mix of classical campaign furniture and mid century modernism. Infused with a rugged meets refined aesthetic, the collection's tufted leather upholstery details are offset by careful and precise facets of turned brass married with wood.

SPECIFICATIONS

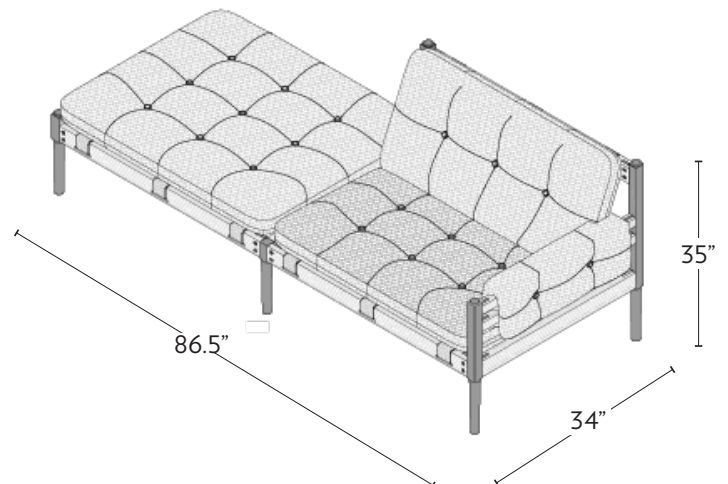
86 $\frac{1}{2}$ "W x 31 $\frac{1}{8}$ "H x 23"AH x 34 $\frac{1}{2}$ "D

MATERIALS + FINISH

WOOD: Wenge, Walnut, Oak, Oxidized Maple, Ebonized Ash.

UPHOLSTERY: DLV Collection Leathers, COM or COL.

METAL: Satin Brass, Satin Nickel, Oil-Rubbed Bronze, Antique Bronze, Gunmetal.

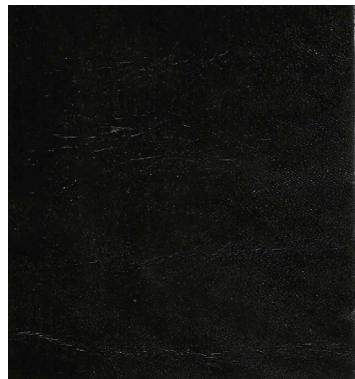


COM: 8 YDS /COL: 144 SQFT. PLEASE CONTACT US FOR MORE DETAILS

DE LA VEGA DESIGNS | INFO@DLVDESIGNS.COM | DLVDESIGNS.COM | 200 LEXINGTON AVENUE, SUITE 1316 NEW YORK, NY | 212.301.7623

Materials

DLV Leather



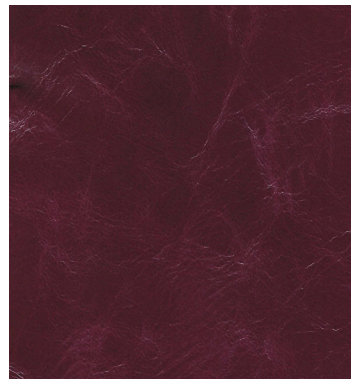
Nero



Cuoio



Dark Brown



Eggplant



Torrone



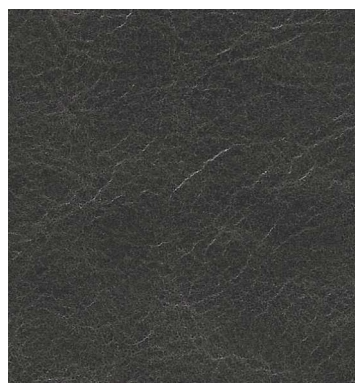
Olive



Talco



Navy



Elefante



Butter



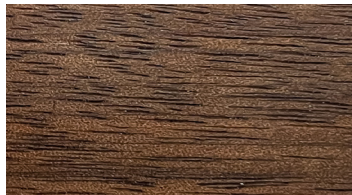
Avio

Materials

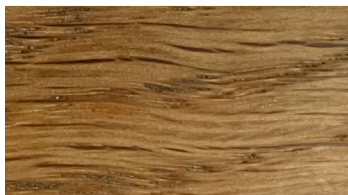
Wood (frame)



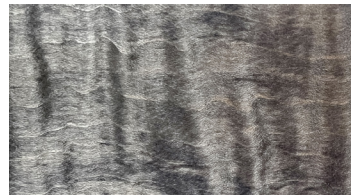
Wenge



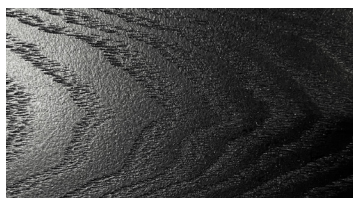
Walnut



Oak



Oxidized Maple

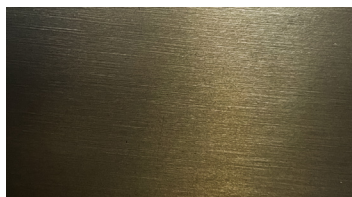


Ebonized Ash

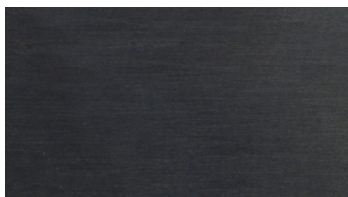
Metal (legs + details)



Satin Brass



Oil Rubbed Bronze



Gunmetal



Antique Bronze



Satin Nickel